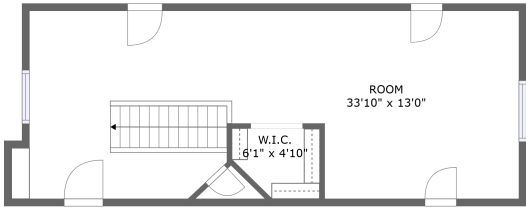
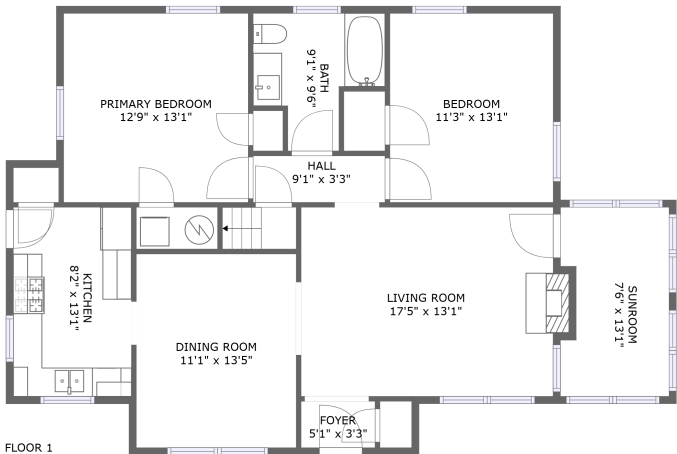


Home report

1318 East 51st Street, Parkside, Savannah, Chatham County,
Georgia, United States, 31404



Total Area: 1320 sq. ft

Floor 1: 1123 sq. ft, Floor 2: 197 sq. ft

Excluded: Low ceiling 248 sq. ft, Walls: 125 sq. ft

Property summary



2 Floors



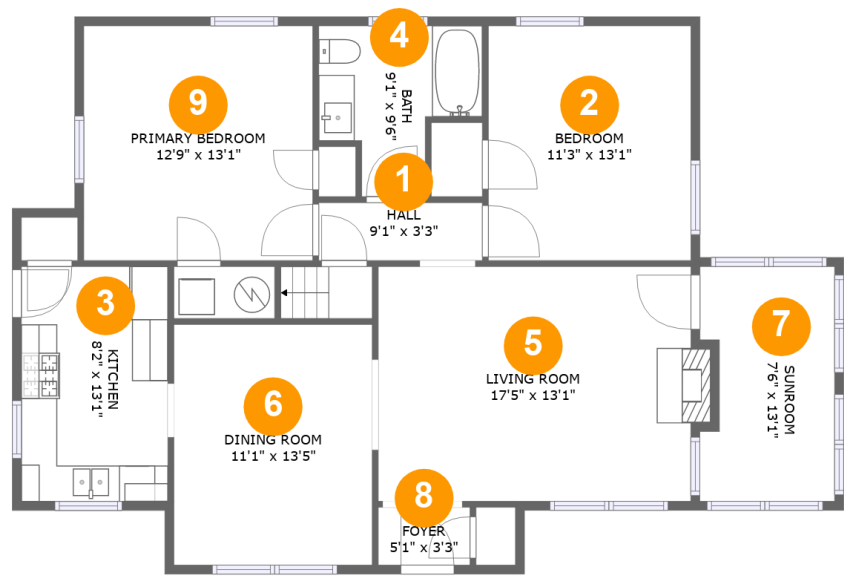
2 Bedrooms



1 Bathrooms

Home report

1318 East 51st Street, Parkside, Savannah, Chatham County,
Georgia, United States, 31404



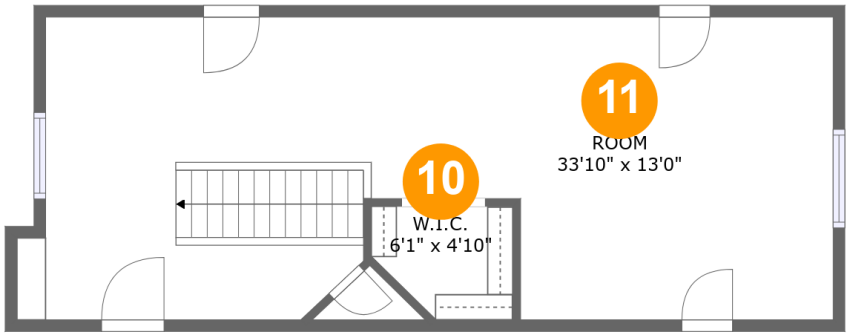
Room dimensions

Floor 1 Total:1123sqft Excluded: 0sqft

#		Max Dimensions	sqft	Included
1	Hall	9'1" x 3'3"	29 sq. ft	Yes
2	Bedroom	11'3" x 13'1"	147 sq. ft	Yes
3	Kitchen	8'2" x 13'1"	107 sq. ft	Yes
4	Bath	9'1" x 9'6"	65 sq. ft	Yes
5	Living Room	17'5" x 13'1"	232 sq. ft	Yes
6	Dining Room	11'1" x 13'5"	148 sq. ft	Yes
7	Sunroom	7'6" x 13'1"	93 sq. ft	Yes
8	Foyer	5'1" x 3'3"	16 sq. ft	Yes
9	Primary Bedroom	12'9" x 13'1"	167 sq. ft	Yes

Home report

1318 East 51st Street, Parkside, Savannah, Chatham County,
Georgia, United States, 31404



Room dimensions

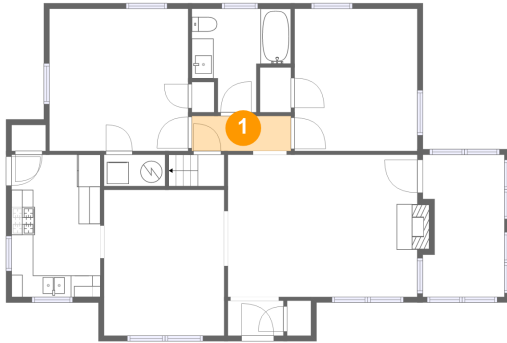
Floor 2 Total:197sqft Excluded: 248sqft

#		Max Dimensions	sqft	Included
10	W.I.C.	6'1" x 4'10"	8 sq. ft	Yes
11	Room	33'10" x 13'0"	185 sq. ft	Yes

Home report

1318 East 51st Street, Parkside, Savannah, Chatham County,
Georgia, United States, 31404

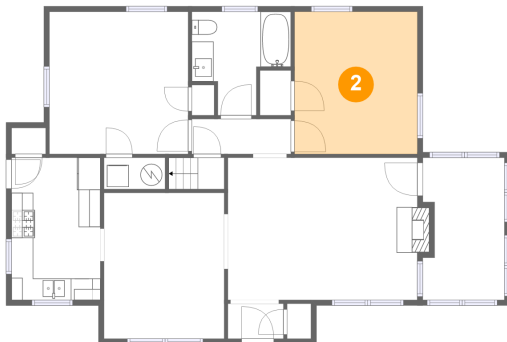
1 Floor 1 - Hall



Max Dimensions: 9'1" x 3'3"
Calculated Area: 29 sq. ft
Included: Yes

Heated: Yes
Finished: Yes
Enclosed: Yes
Contiguous: Yes
Permitted: Yes
Wet space: No
Addition: No
Conversion: No

2 Floor 1 - Bedroom



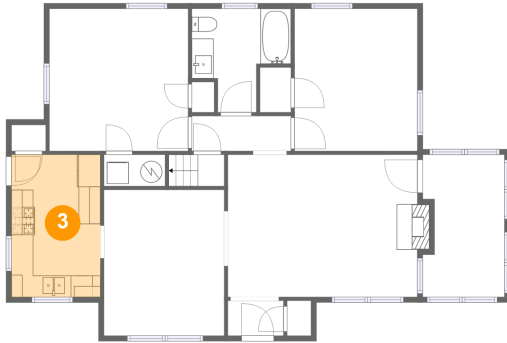
Max Dimensions: 11'3" x 13'1"
Calculated Area: 147 sq. ft
Included: Yes

Heated: Yes
Finished: Yes
Enclosed: Yes
Contiguous: Yes
Permitted: Yes
Wet space: No
Addition: No
Conversion: No

Home report

1318 East 51st Street, Parkside, Savannah, Chatham County,
Georgia, United States, 31404

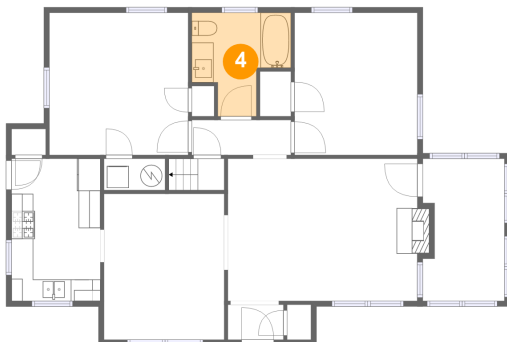
3 Floor 1 - Kitchen



Max Dimensions: 8'2" x 13'1"
Calculated Area: 107 sq. ft
Included: Yes

Heated: Yes
Finished: Yes
Enclosed: Yes
Contiguous: Yes
Permitted: Yes
Wet space: No
Addition: No
Conversion: No

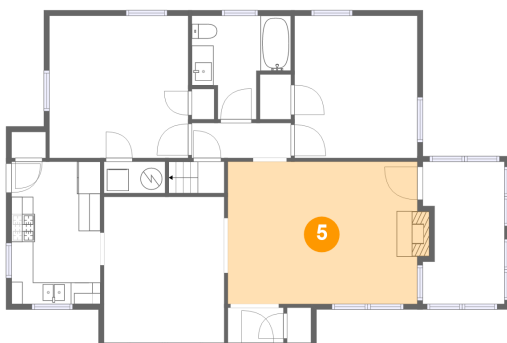
4 Floor 1 - Bath



Max Dimensions: 9'1" x 9'6"
Calculated Area: 65 sq. ft
Included: Yes

Heated: Yes
Finished: Yes
Enclosed: Yes
Contiguous: Yes
Permitted: Yes
Wet space: Yes
Addition: No
Conversion: No

5 Floor 1 - Living Room



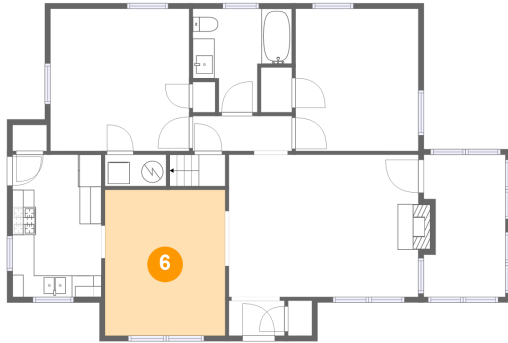
Max Dimensions: 17'5" x 13'1"
Calculated Area: 232 sq. ft
Included: Yes

Heated: Yes
Finished: Yes
Enclosed: Yes
Contiguous: Yes
Permitted: Yes
Wet space: No
Addition: No
Conversion: No

Home report

1318 East 51st Street, Parkside, Savannah, Chatham County,
Georgia, United States, 31404

6 Floor 1 - Dining Room



Max Dimensions: 11'1" x 13'5"
Calculated Area: 148 sq. ft
Included: Yes

Heated: Yes
Finished: Yes
Enclosed: Yes
Contiguous: Yes
Permitted: Yes
Wet space: No
Addition: No
Conversion: No

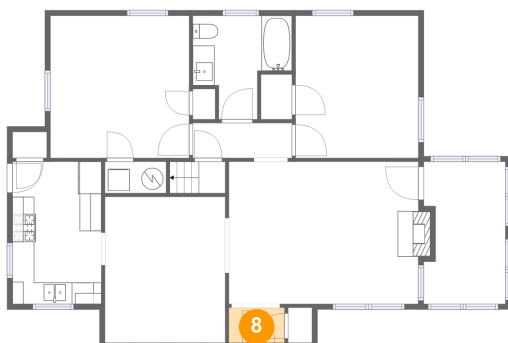
7 Floor 1 - Sunroom



Max Dimensions: 7'6" x 13'1"
Calculated Area: 93 sq. ft
Included: Yes

Heated: Yes
Finished: Yes
Enclosed: Yes
Contiguous: Yes
Permitted: Yes
Wet space: No
Addition: No
Conversion: No

8 Floor 1 - Foyer



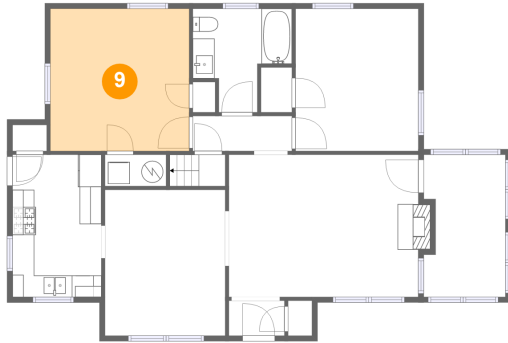
Max Dimensions: 5'1" x 3'3"
Calculated Area: 16 sq. ft
Included: Yes

Heated: Yes
Finished: Yes
Enclosed: Yes
Contiguous: Yes
Permitted: Yes
Wet space: No
Addition: No
Conversion: No

Home report

1318 East 51st Street, Parkside, Savannah, Chatham County,
Georgia, United States, 31404

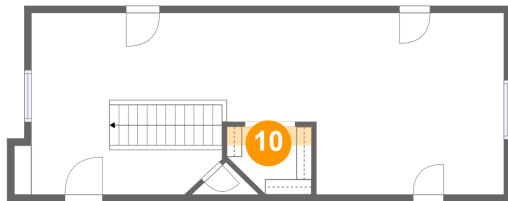
9 Floor 1 - Primary Bedroom



Max Dimensions: 12'9" x 13'1"
Calculated Area: 167 sq. ft
Included: Yes

Heated: Yes
Finished: Yes
Enclosed: Yes
Contiguous: Yes
Permitted: Yes
Wet space: No
Addition: No
Conversion: No

10 Floor 2 - W.I.C.



Max Dimensions: 6'1" x 4'10"
Calculated Area: 8 sq. ft
Included: Yes

Heated: Yes
Finished: Yes
Enclosed: Yes
Contiguous: Yes
Permitted: Yes
Wet space: No
Addition: No
Conversion: No

11 Floor 2 - Room



Max Dimensions: 33'10" x 13'0"
Calculated Area: 185 sq. ft
Included: Yes

Heated: Yes
Finished: Yes
Enclosed: Yes
Contiguous: Yes
Permitted: Yes
Wet space: No
Addition: No
Conversion: No