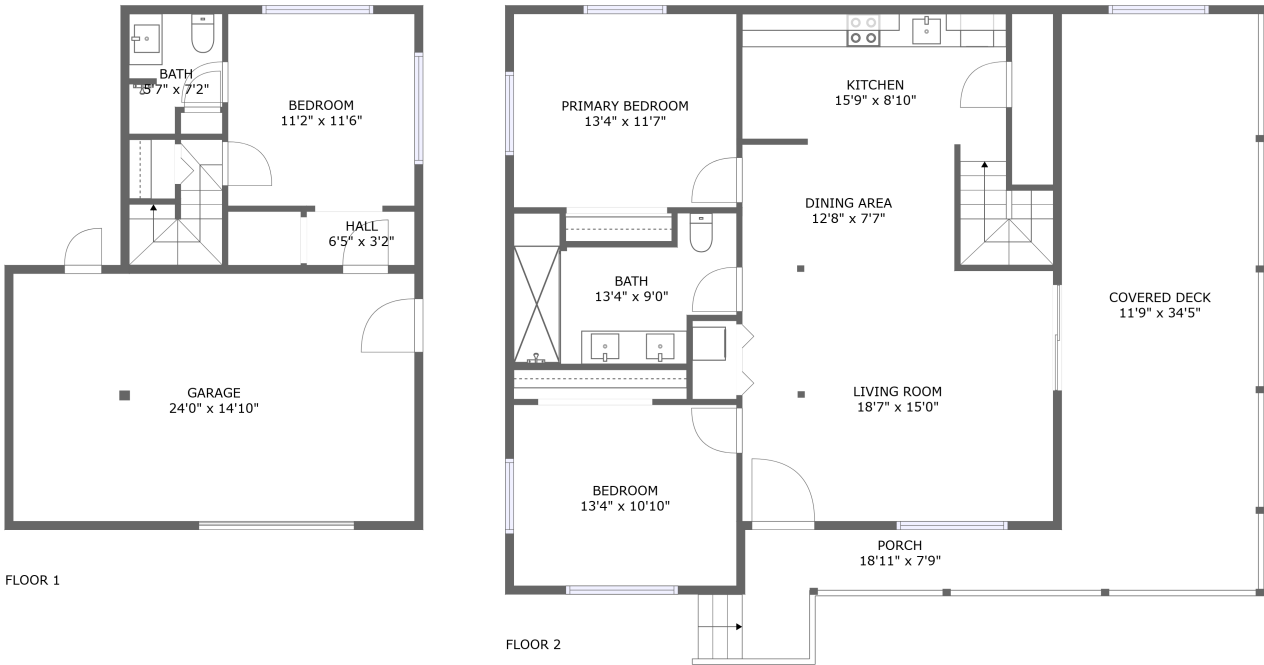


Home report

22 Hastie Way, Oroville East, Oroville, Butte County, California,  
United States, 95966




**Total Area: 1285 sq. ft**

Floor 1: 256 sq. ft, Floor 2: 1029 sq. ft

Excluded: Garage 355 sq. ft, Covered deck 405 sq. ft, Porch 95 sq. ft, Walls: 137 sq. ft

**Property summary**

 **2** Floors

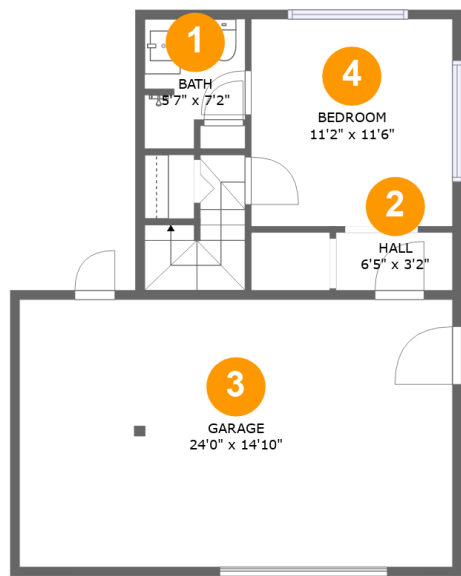
 **3** Bedrooms

 **2** Bathrooms

 **1** Garages

Home report

22 Hastie Way, Oroville East, Oroville, Butte County, California,  
United States, 95966



Room dimensions

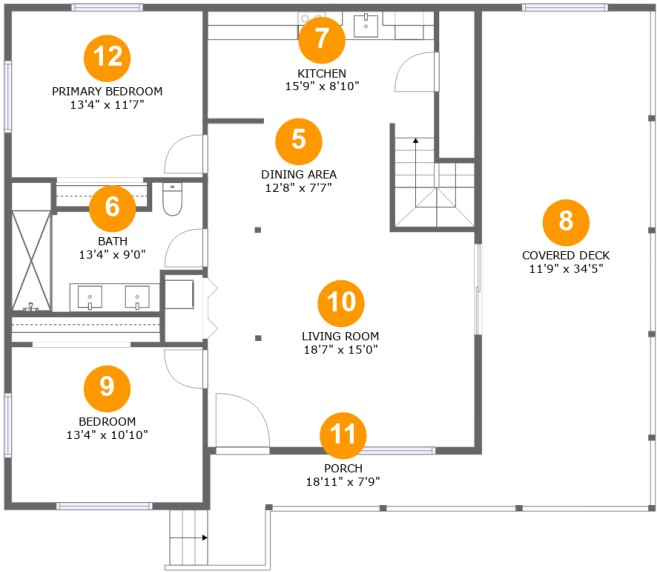
Floor 1

Total:256sqft   Excluded: 355sqft

#		Max Dimensions	sqft	Included
1	Bath	5'7" x 7'2"	35 sq. ft	Yes
2	Hall	6'5" x 3'2"	21 sq. ft	Yes
3	Garage	24'0" x 14'10"	355 sq. ft	No
4	Bedroom	11'2" x 11'6"	128 sq. ft	Yes

Home report

22 Hastie Way, Oroville East, Oroville, Butte County, California,  
United States, 95966



Room dimensions

Floor 2

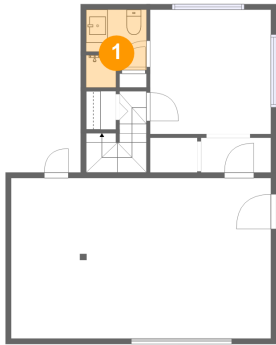
Total:1029sqft

Excluded: 500sqft

#		Max Dimensions	sqft	Included
5	Dining Area	12'8" x 7'7"	96 sq. ft	Yes
6	Bath	13'4" x 9'0"	97 sq. ft	Yes
7	Kitchen	15'9" x 8'10"	154 sq. ft	Yes
8	Covered Deck	11'9" x 34'5"	405 sq. ft	No
9	Bedroom	13'4" x 10'10"	144 sq. ft	Yes
10	Living Room	18'7" x 15'0"	278 sq. ft	Yes
11	Porch	18'11" x 7'9"	95 sq. ft	No
12	Primary Bedroom	13'4" x 11'7"	154 sq. ft	Yes

22 Hastie Way, Oroville East, Oroville, Butte County, California,  
United States, 95966

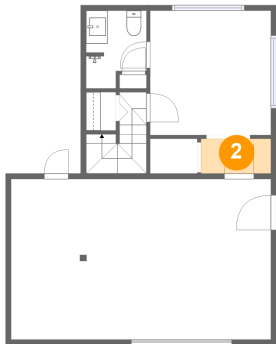
1 Floor 1 - Bath



Max Dimensions: 5'7" x 7'2"  
Calculated Area: 35 sq. ft  
Included: Yes

Heated: Yes  
Finished: Yes  
Enclosed: Yes  
Contiguous: Yes  
Permitted: Yes  
Wet space: Yes  
Addition: No  
Conversion: No

2 Floor 1 - Hall

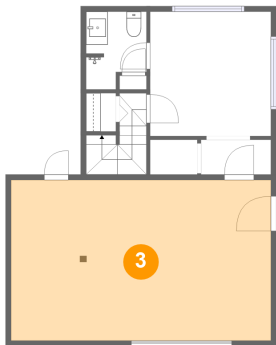


Max Dimensions: 6'5" x 3'2"  
Calculated Area: 21 sq. ft  
Included: Yes

Heated: Yes  
Finished: Yes  
Enclosed: Yes  
Contiguous: Yes  
Permitted: Yes  
Wet space: No  
Addition: No  
Conversion: No

22 Hastie Way, Oroville East, Oroville, Butte County, California,  
United States, 95966

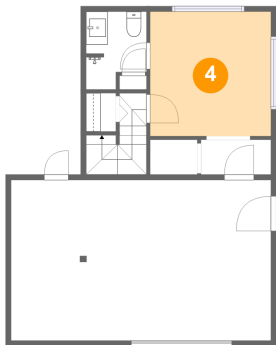
3 Floor 1 - Garage



Max Dimensions: 24'0" x 14'10"  
Calculated Area: 355 sq. ft  
Included: No

Heated: No  
Finished: No  
Enclosed: Yes  
Contiguous: Yes  
Permitted: Yes  
Wet space: No  
Addition: No  
Conversion: No

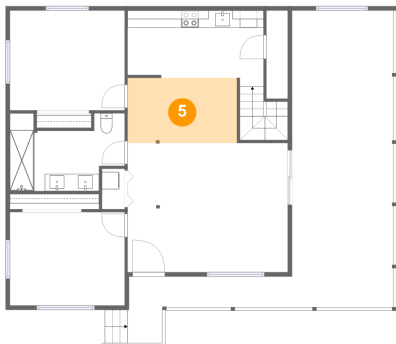
4 Floor 1 - Bedroom



Max Dimensions: 11'2" x 11'6"  
Calculated Area: 128 sq. ft  
Included: Yes

Heated: Yes  
Finished: Yes  
Enclosed: Yes  
Contiguous: Yes  
Permitted: Yes  
Wet space: No  
Addition: No  
Conversion: No

5 Floor 2 - Dining Area

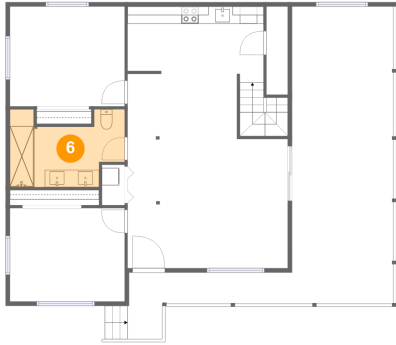


Max Dimensions: 12'8" x 7'7"  
Calculated Area: 96 sq. ft  
Included: Yes

Heated: Yes  
Finished: Yes  
Enclosed: Yes  
Contiguous: Yes  
Permitted: Yes  
Wet space: No  
Addition: No  
Conversion: No

22 Hastie Way, Oroville East, Oroville, Butte County, California,  
United States, 95966

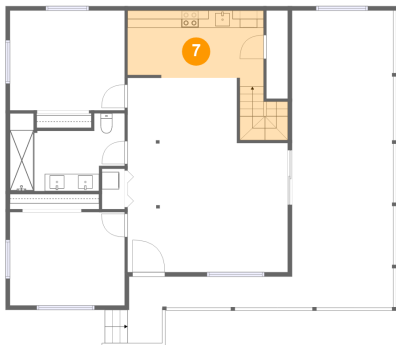
## 6 Floor 2 - Bath



Max Dimensions: 13'4" x 9'0"  
Calculated Area: 97 sq. ft  
Included: Yes

Heated: Yes  
Finished: Yes  
Enclosed: Yes  
Contiguous: Yes  
Permitted: Yes  
Wet space: Yes  
Addition: No  
Conversion: No

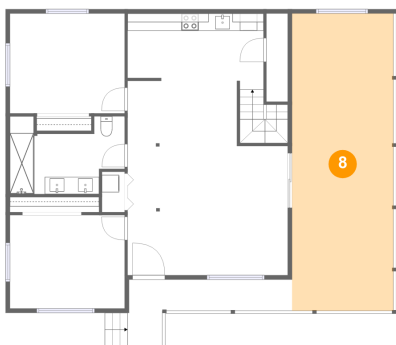
## 7 Floor 2 - Kitchen



Max Dimensions: 15'9" x 8'10"  
Calculated Area: 154 sq. ft  
Included: Yes

Heated: Yes  
Finished: Yes  
Enclosed: Yes  
Contiguous: Yes  
Permitted: Yes  
Wet space: No  
Addition: No  
Conversion: No

## 8 Floor 2 - Covered Deck

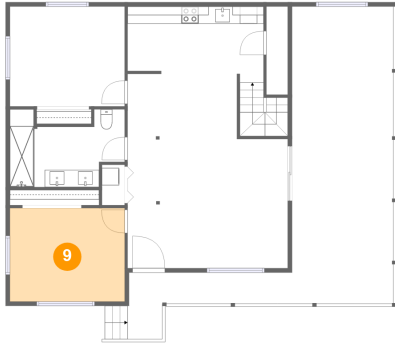


Max Dimensions: 11'9" x 34'5"  
Calculated Area: 405 sq. ft  
Included: No

Heated: No  
Finished: Yes  
Enclosed: No  
Contiguous: Yes  
Permitted: Yes  
Wet space: No  
Addition: No  
Conversion: No

22 Hastie Way, Oroville East, Oroville, Butte County, California,  
United States, 95966

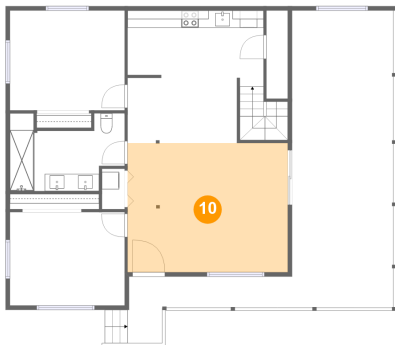
## 9 Floor 2 - Bedroom



Max Dimensions: 13'4" x 10'10"  
Calculated Area: 144 sq. ft  
Included: Yes

Heated: Yes  
Finished: Yes  
Enclosed: Yes  
Contiguous: Yes  
Permitted: Yes  
Wet space: No  
Addition: No  
Conversion: No

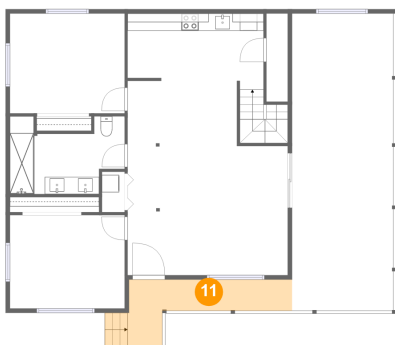
## 10 Floor 2 - Living Room



Max Dimensions: 18'7" x 15'0"  
Calculated Area: 278 sq. ft  
Included: Yes

Heated: Yes  
Finished: Yes  
Enclosed: Yes  
Contiguous: Yes  
Permitted: Yes  
Wet space: No  
Addition: No  
Conversion: No

## 11 Floor 2 - Porch

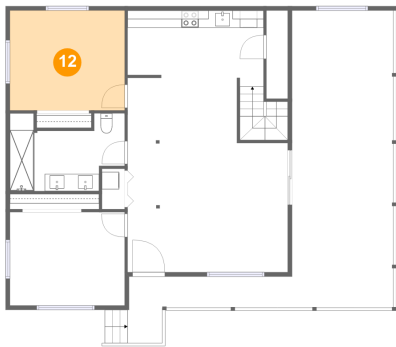


Max Dimensions: 18'11" x 7'9"  
Calculated Area: 95 sq. ft  
Included: No

Heated: No  
Finished: Yes  
Enclosed: No  
Contiguous: Yes  
Permitted: Yes  
Wet space: No  
Addition: No  
Conversion: No

22 Hastie Way, Oroville East, Oroville, Butte County, California,  
United States, 95966

12 Floor 2 - Primary Bedroom



Max Dimensions: 13'4" x 11'7"  
Calculated Area: 154 sq. ft  
Included: Yes

Heated: Yes  
Finished: Yes  
Enclosed: Yes  
Contiguous: Yes  
Permitted: Yes  
Wet space: No  
Addition: No  
Conversion: No