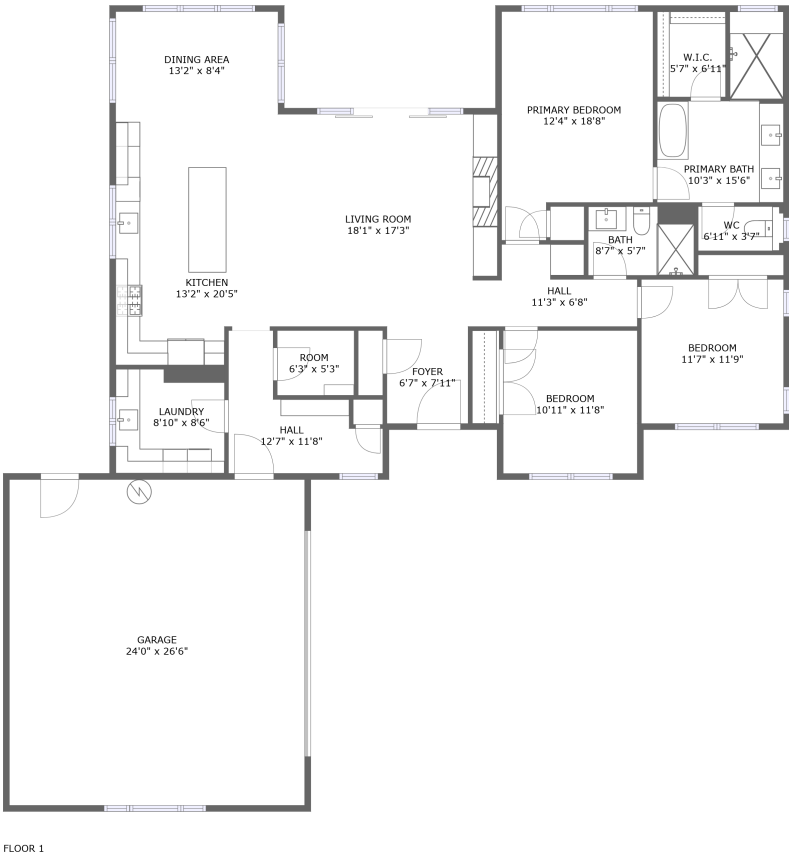


Home report

215 Fox Peak Dr, Lake Almanor Peninsula, Lake Almanor,
Plumas County, California, United States, 96137



Total Area: 1806 sq. ft

Floor 1: 1806 sq. ft

Excluded: Garage 638 sq. ft, Walls: 149 sq. ft

Property summary



1 Floors



3 Bedrooms



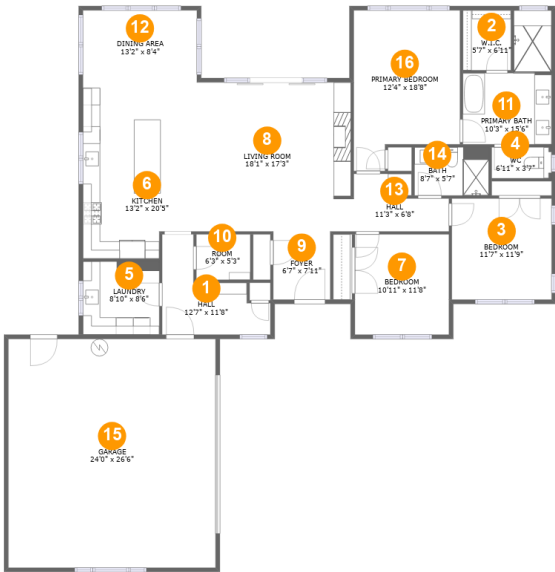
2 Bathrooms



1 Garages

Home report

215 Fox Peak Dr, Lake Almanor Peninsula, Lake Almanor,
Plumas County, California, United States, 96137



Room dimensions

Floor 1 Total:1806sqft Excluded: 638sqft

#		Max Dimensions	sqft	Included
1	Hall	12'7" x 11'8"	90 sq. ft	Yes
2	W.I.C.	5'7" x 6'11"	39 sq. ft	Yes
3	Bedroom	11'7" x 11'9"	136 sq. ft	Yes
4	WC	6'11" x 3'7"	25 sq. ft	Yes
5	Laundry	8'10" x 8'6"	75 sq. ft	Yes
6	Kitchen	13'2" x 20'5"	255 sq. ft	Yes
7	Bedroom	10'11" x 11'8"	127 sq. ft	Yes
8	Living Room	18'1" x 17'3"	310 sq. ft	Yes
9	Foyer	6'7" x 7'11"	52 sq. ft	Yes
10	Room	6'3" x 5'3"	33 sq. ft	Yes
11	Primary Bath	10'3" x 15'6"	117 sq. ft	Yes

Home report

**215 Fox Peak Dr, Lake Almanor Peninsula, Lake Almanor,
Plumas County, California, United States, 96137**

#		Max Dimensions	sqft	Included
12	Dining Area	13'2" x 8'4"	111 sq. ft	Yes
13	Hall	11'3" x 6'8"	54 sq. ft	Yes
14	Bath	8'7" x 5'7"	48 sq. ft	Yes
15	Garage	24'0" x 26'6"	638 sq. ft	No
16	Primary Bedroom	12'4" x 18'8"	203 sq. ft	Yes

215 Fox Peak Dr, Lake Almanor Peninsula, Lake Almanor,
Plumas County, California, United States, 96137

1 Floor 1 - Hall



Max Dimensions: 12'7" x 11'8"
Calculated Area: 90 sq. ft
Included: Yes

Heated: Yes
Finished: Yes
Enclosed: Yes
Contiguous: Yes
Permitted: Yes
Wet space: No
Addition: No
Conversion: No

2 Floor 1 - W.I.C.



Max Dimensions: 5'7" x 6'11"
Calculated Area: 39 sq. ft
Included: Yes

Heated: Yes
Finished: Yes
Enclosed: Yes
Contiguous: Yes
Permitted: Yes
Wet space: No
Addition: No
Conversion: No

215 Fox Peak Dr, Lake Almanor Peninsula, Lake Almanor,
Plumas County, California, United States, 96137

3 Floor 1 - Bedroom



Max Dimensions: 11'7" x 11'9"
Calculated Area: 136 sq. ft
Included: Yes

Heated: Yes
Finished: Yes
Enclosed: Yes
Contiguous: Yes
Permitted: Yes
Wet space: No
Addition: No
Conversion: No

4 Floor 1 - WC



Max Dimensions: 6'11" x 3'7"
Calculated Area: 25 sq. ft
Included: Yes

Heated: Yes
Finished: Yes
Enclosed: Yes
Contiguous: Yes
Permitted: Yes
Wet space: Yes
Addition: No
Conversion: No

5 Floor 1 - Laundry



Max Dimensions: 8'10" x 8'6"
Calculated Area: 75 sq. ft
Included: Yes

Heated: Yes
Finished: Yes
Enclosed: Yes
Contiguous: Yes
Permitted: Yes
Wet space: No
Addition: No
Conversion: No

215 Fox Peak Dr, Lake Almanor Peninsula, Lake Almanor,
Plumas County, California, United States, 96137

6 Floor 1 - Kitchen



Max Dimensions: 13'2" x 20'5"
Calculated Area: 255 sq. ft
Included: Yes

Heated: Yes
Finished: Yes
Enclosed: Yes
Contiguous: Yes
Permitted: Yes
Wet space: No
Addition: No
Conversion: No

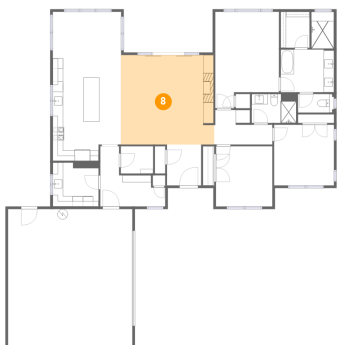
7 Floor 1 - Bedroom



Max Dimensions: 10'11" x 11'8"
Calculated Area: 127 sq. ft
Included: Yes

Heated: Yes
Finished: Yes
Enclosed: Yes
Contiguous: Yes
Permitted: Yes
Wet space: No
Addition: No
Conversion: No

8 Floor 1 - Living Room



Max Dimensions: 18'1" x 17'3"
Calculated Area: 310 sq. ft
Included: Yes

Heated: Yes
Finished: Yes
Enclosed: Yes
Contiguous: Yes
Permitted: Yes
Wet space: No
Addition: No
Conversion: No

215 Fox Peak Dr, Lake Almanor Peninsula, Lake Almanor,
Plumas County, California, United States, 96137

9 Floor 1 - Foyer



Max Dimensions: 6'7" x 7'11"
Calculated Area: 52 sq. ft
Included: Yes

Heated: Yes
Finished: Yes
Enclosed: Yes
Contiguous: Yes
Permitted: Yes
Wet space: No
Addition: No
Conversion: No

10 Floor 1 - Room



Max Dimensions: 6'3" x 5'3"
Calculated Area: 33 sq. ft
Included: Yes

Heated: Yes
Finished: Yes
Enclosed: Yes
Contiguous: Yes
Permitted: Yes
Wet space: No
Addition: No
Conversion: No

11 Floor 1 - Primary Bath



Max Dimensions: 10'3" x 15'6"
Calculated Area: 117 sq. ft
Included: Yes

Heated: Yes
Finished: Yes
Enclosed: Yes
Contiguous: Yes
Permitted: Yes
Wet space: Yes
Addition: No
Conversion: No

215 Fox Peak Dr, Lake Almanor Peninsula, Lake Almanor,
Plumas County, California, United States, 96137

12 Floor 1 - Dining Area



Max Dimensions: 13'2" x 8'4"
Calculated Area: 111 sq. ft
Included: Yes

Heated: Yes
Finished: Yes
Enclosed: Yes
Contiguous: Yes
Permitted: Yes
Wet space: No
Addition: No
Conversion: No

13 Floor 1 - Hall



Max Dimensions: 11'3" x 6'8"
Calculated Area: 54 sq. ft
Included: Yes

Heated: Yes
Finished: Yes
Enclosed: Yes
Contiguous: Yes
Permitted: Yes
Wet space: No
Addition: No
Conversion: No

14 Floor 1 - Bath



Max Dimensions: 8'7" x 5'7"
Calculated Area: 48 sq. ft
Included: Yes

Heated: Yes
Finished: Yes
Enclosed: Yes
Contiguous: Yes
Permitted: Yes
Wet space: Yes
Addition: No
Conversion: No

215 Fox Peak Dr, Lake Almanor Peninsula, Lake Almanor,
Plumas County, California, United States, 96137

15 Floor 1 - Garage



Max Dimensions: 24'0" x 26'6"
Calculated Area: 638 sq. ft
Included: No

Heated: No
Finished: No
Enclosed: Yes
Contiguous: Yes
Permitted: Yes
Wet space: No
Addition: No
Conversion: No

16 Floor 1 - Primary Bedroom



Max Dimensions: 12'4" x 18'8"
Calculated Area: 203 sq. ft
Included: Yes

Heated: Yes
Finished: Yes
Enclosed: Yes
Contiguous: Yes
Permitted: Yes
Wet space: No
Addition: No
Conversion: No