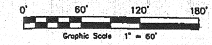


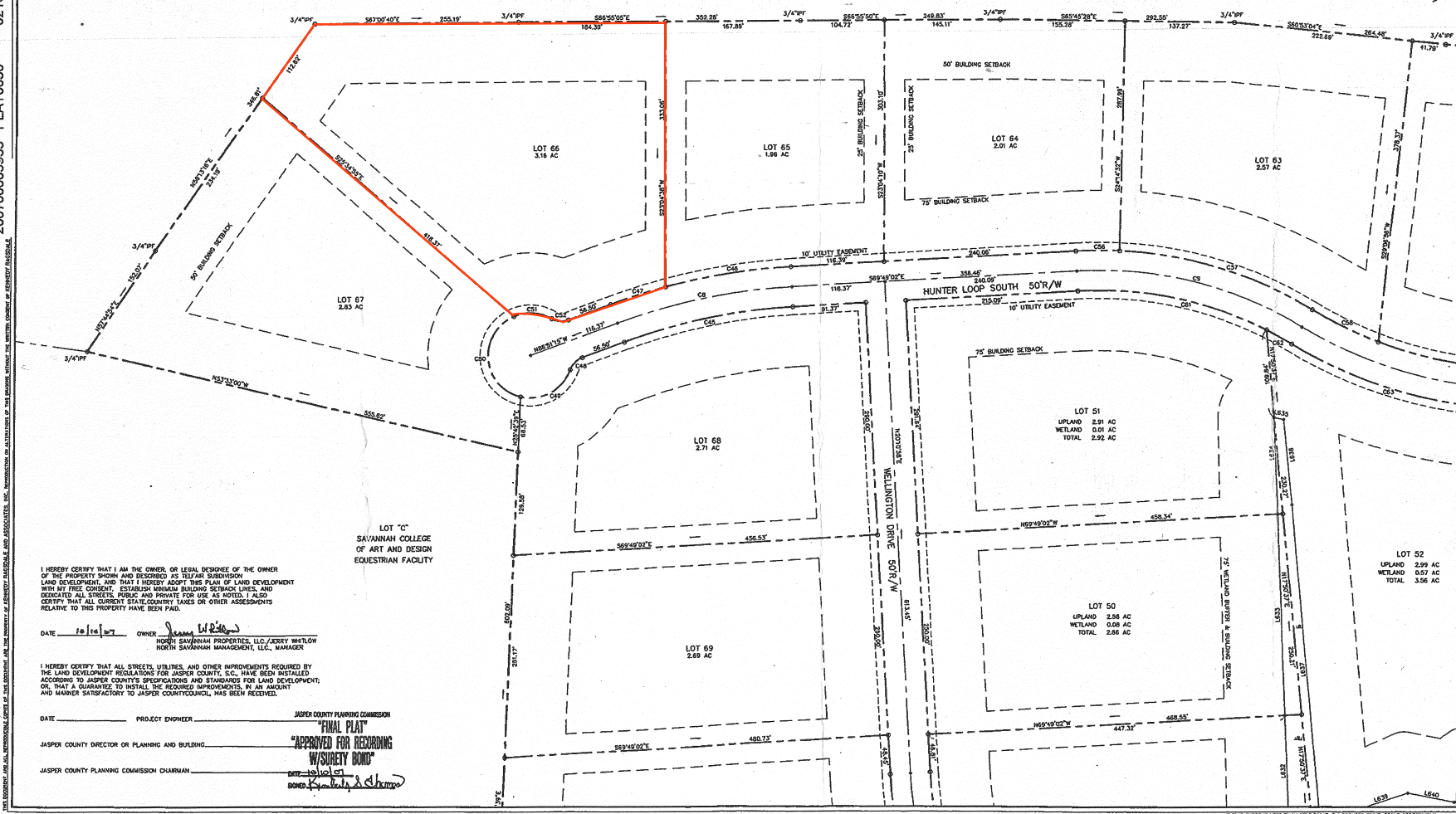
COLLINS'S LUMBER MILL, INC.
DEED BOOK 156, PAGE 287
PLAT BOOK 18, PAGE 60

SEE SHEET 1 NOTES, SHEET LAY-OUT
AND APPROVAL SIGNATURES.
SEE SHEET 9 FOR LINE & CURVE
TABLES.



SEAL OF JASPER COUNTY GEORGIA
PLANNING COMMISSION
JASPER COUNTY GEORGIA
PLANNING COMMISSION
SEAL OF JASPER COUNTY GEORGIA
PLANNING COMMISSION
JASPER COUNTY GEORGIA
PLANNING COMMISSION
SEAL OF JASPER COUNTY GEORGIA
PLANNING COMMISSION
JASPER COUNTY GEORGIA
PLANNING COMMISSION

KERRY RAGSDALE & ASSOCIATES, INC.
REGISTERED PROFESSIONAL ENGINEERS
1700 BARNWELL, SUITE 303
PERMITS DIVISION CONTACT
PH: 903.742.9242
WWW.KERRYENGINEERS.COM



I HEREBY CERTIFY THAT I AM THE OWNER OR LEGAL RESIDENCE OF THE OWNER OF THE PROPERTY SHOWN AND RECORDED AS TELFAIR SUBDIVISION LAND DEVELOPMENT AND THAT I HEREBY ADOPT THIS PLAN OF LAND DEVELOPMENT WITH ALL PUBLIC CONVEYANCES, ESTABLISHING MINIMUM BUILDING SETBACK LINES, AND DESIGNATED ALL STREETS, ROADS AND PRIVATE USE AS NOTED. I ALSO CERTIFY THAT ALL CURRENT STATE, COUNTY TAXES OR OTHER ASSESSMENTS RELATIVE TO THIS PROPERTY HAVE BEEN PAID.

DATE 10/16/07 OWNER James W. Ragdale
NORTH SAVANNAH PROPERTIES, LLC, JERRY WHITLOW
NORTH SAVANNAH MANAGEMENT, LLC, MANAGER

I HEREBY CERTIFY THAT ALL STREETS, UTILITIES, AND OTHER IMPROVEMENTS REQUIRED BY THE LAND DEVELOPMENT REGULATIONS FOR JASPER COUNTY, GEORGIA, HAVE BEEN INSTALLED ACCORDING TO JASPER COUNTY'S SPECIFICATIONS AND STANDARDS FOR LAND DEVELOPMENT, OR THAT A GUARANTEE TO INSTALL THE REQUIRED IMPROVEMENTS IN AN AMOUNT AND MANNER SATISFACTORY TO JASPER COUNTY COUNCIL, HAS BEEN RECEIVED.

DATE PROJECT ENGINEER JASPER COUNTY PLANNING COMMISSION
"FINAL PLAN"
"APPROVED FOR RECORDING"
"WITH SURETY BOND"
DATE 10/16/07
BOND \$100,000

A SUBDIVISION OF
TELFAIR PLANTATION
JASPER COUNTY, SOUTH CAROLINA

KERRY RAGSDALE & ASSOCIATES, INC.
REGISTERED PROFESSIONAL ENGINEERS
1700 BARNWELL, SUITE 303
PERMITS DIVISION CONTACT
PH: 903.742.9242
WWW.KERRYENGINEERS.COM

NORTH SAVANNAH PROPERTIES, LLC

PROJECT # 90007.00
FIELD DATE 8/17/07
PLAT # 10030
DRAWN BY H.B.A.
CHECKED BY J.A.P.
SCALE 1\"/>

SHEET 2/9

IF THIS SHEET IS LESS THAN 12" X 18" IT IS A REDUCED PRINT. SCALE ACCORDINGLY.