

Classic Corvallis Charm, Updated Where It Counts



Tucked alongside **Woodland Park** and its winding network of paths, this classic **single-story home** sits on a beautifully **landscaped lot** where the neighborhood pace genuinely slows you down. With 4 bedrooms, 1.5 baths, and 1,212 SqFt of thoughtfully maintained living space, it offers the kind of comfort, character, and connection to the outdoors that's hard to find.

Step inside and you're greeted with rich Red River Hickory **CoreTec Luxury Vinyl Plank flooring** flowing through the main living areas, anchored by a wood-burning fireplace and framed by windows that fill the space with natural light. A pocket door connects the living room to the kitchen - a detail that's equal parts practical and charming. **Storage is generous throughout**, with a twin closet, additional closet, and built-ins that give every room a place for all your belongings.

The kitchen is equipped with **quartz countertops**, a stainless-steel double-basin sink with a brushed nickel faucet, a built-in hood, and a comprehensive selection of **stainless-steel appliances**, including a **Bosch** dishwasher, a **GE** glass-top electric oven and range, and a **Kenmore** café-style double-door refrigerator and freezer. Everything you need to cook, entertain, and settle in is already here.

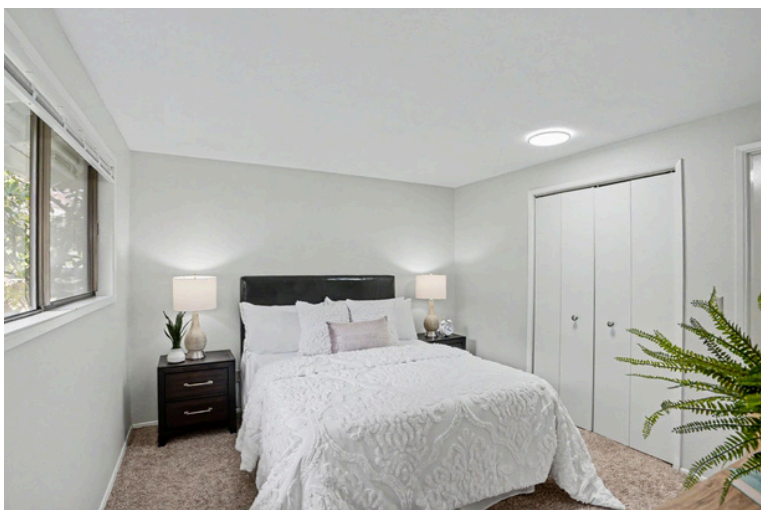
All four bedrooms offer generous closet space and carpet flooring, with the primary bedroom connecting directly to the **Jack-and-Jill bath**. The bathroom is equipped with **Corian countertops**, **modern light fixtures**, and a **newly resurfaced tub** and shower.

The **attached two-car garage** has two individual doors, ample lighting, and space for the **LG** washer and **GE** dryer (included), right where you need them. The mechanicals are in great shape: high efficiency 90% efficiency gas forced air was inspected in February 2026, and the gas hot water heater was replaced in 2025.

Outside, the home earns its **park-like reputation**. An architectural shingle **roof installed around 2022**, a recently **resurfaced deck**, an extensive **concrete patio and sports court**, newer fencing, and a storage shed round out a backyard that's ready for whatever you have in mind.

Whether you're starting your morning with a walk through the park, letting the kids burn off energy on the sports court out back, or simply sitting on a **freshly resurfaced deck** surrounded by beautifully landscaped grounds, the outdoor experience here is as much a selling point as anything inside. A **nearby bus stop** adds everyday convenience without taking anything away from the quiet, settled feel of the street.

Schedule your showing today!



Noelle Moen
Broker
Licensed in OR
541-968-5458



Michael Krasilovsky
Principal Broker
Licensed in OR
541-207-6074



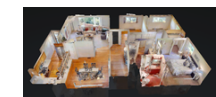
Unbelievably experienced.
Incredibly skilled.
Loved by clients.
It matters who you choose.



More Pictures



Video Tours



3D Tour



For Sale: 1525 NW Woodland Drive, Corvallis OR 97330



🏠 MLS: 839632
 🏷️ \$525,000
 🛏️ 4 Bedrooms
 🚿 1.5 Bathrooms

Highlights

- Adjacent to Woodland Park & paths
- Abundant natural light
- Wood-burning fireplace
- Generous storage throughout
- Kitchen features stainless steel appliances
- LG washer and GE dryer included
- Jack-and-Jill bathroom
- Attached two-car garage
- Extensive concrete patio/sports court
- Storage Shed
- Resurfaced Deck

