



特點

- HC產品系列使用材料為EPOXY(環氧樹脂)，此種材料成型後分子緊密結合，耐濕氣水氣的程度勝於其他絕緣材料，並搭配成型方式為真空狀態下使用APG設備液態灌注，有效控制內部氣泡提高絕緣使用壽命
- 成型固定孔有多種方式，非目錄表列也可製做
- 客製材料可製做94-V0，耐酸鹼、抗SF6等

標準型 ▶▶▶ 適用於一般環境良好之配電室

額定 / 耐壓 / 衝擊 - 3.3 / 16 / 45 KV 拉伸 / 彎曲 / 扭力 - >2000KG / 300KG / >25 KG-M 局部放電 < 3PC

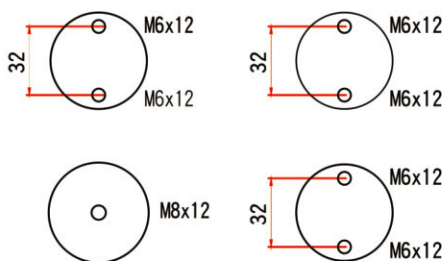
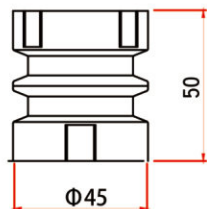
*非標準品，接單生產

3.3KV

HC-50L



(C. D. =62mm)



HC-50L-B1

* HC-50L-B2

訂貨編號：801.H050L.B101

801.H0501.B201

額定 / 耐壓 / 衝擊 - 3.6 / 16 / 45 KV 拉伸 / 彎曲 / 扭力 - >2000KG / 400KG / >25 KG-M 局部放電 < 3PC

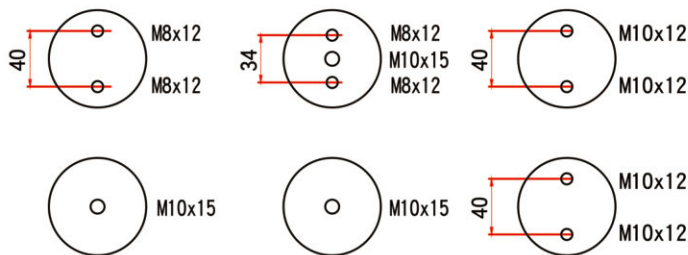
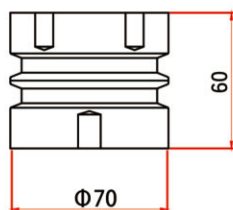
*非標準品，接單生產

3.6KV

HC-60L



(C. D. =88mm)



HC-60L-A1

HC-60L-D1

HC-60L-E3

EM-3

訂貨編號：801.H060L.A101

801.H0601.D01

801.H060L.E301

額定 / 耐壓 / 衝擊 - 4.2 / 16 / 45 KV 拉伸 / 彎曲 / 扭力 - >2000KG / 400KG / >25 KG-M 局部放電 < 3PC

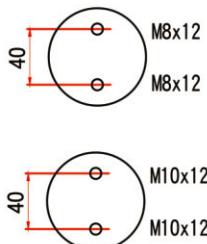
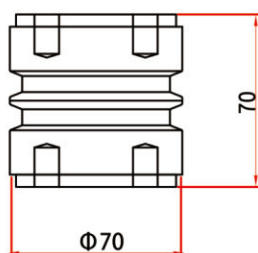
*非標準品，接單生產

4.2KV

HC-70L



(C. D. =100mm)



HC-70L-A3

訂貨編號：801.H070L.A101



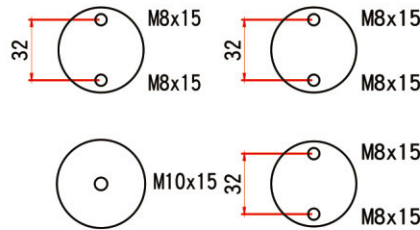
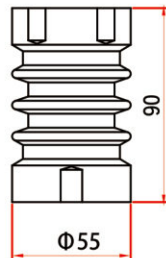
額定 / 耐壓 / 衝擊 - 7.2 / 22 / 60 KV 拉伸 / 彎曲 / 扭力 - >1200KG / 250KG / >25 KG-M 局部放電 < 3PC

7.2KV

HC-90N



(C. D. =137mm)



HC-90N-C1 * HC-90N-C4

訂貨編號: 801.H090N.C101 801.H090N.C401

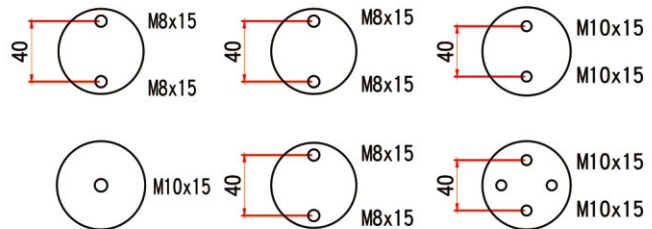
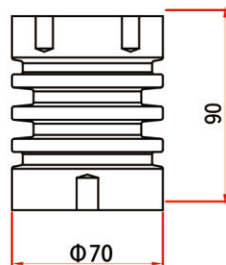
*非標準品, 接單生產

額定 / 耐壓 / 衝擊 - 7.2 / 22 / 60 KV 拉伸 / 彎曲 / 扭力 - >2000KG / 400KG / >25 KG-M 局部放電 < 3PC

HC-90L



(C. D. =137mm)



HC-90L-A1 HC-90L-A5 HC-90L-B4

訂貨編號: 801.H090L.A101 801.H090L.A501 801.H090L.B401

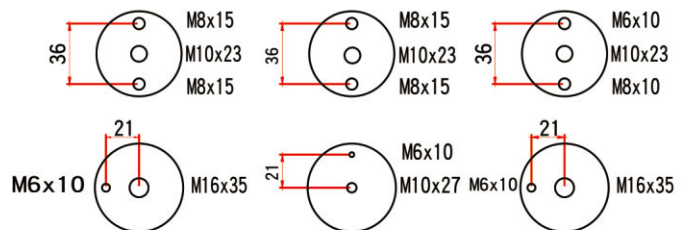
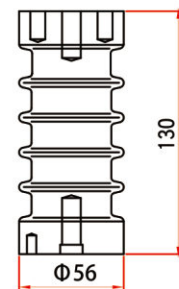
*非標準品, 接單生產

額定 / 耐壓 / 衝擊 - 12 / 36 / 75 KV 拉伸 / 彎曲 / 扭力 - >1200KG / 375KG / >25 KG-M 局部放電 < 3PC

12KV HC-10N



(C. D. =165mm)



HC-10N-A3 HC-10N-C2 * HC-10N-D3

訂貨編號: 801.H010N.A301 801.H010N.C201 801.H010N.D301

*非標準品, 接單生產

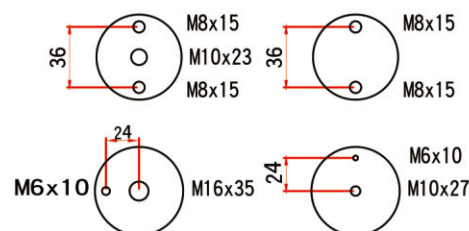
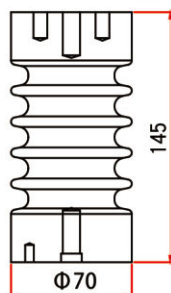
額定 / 耐壓 / 衝擊 - 15 / 36 / 95 KV 拉伸 / 彎曲 / 扭力 - >2000KG / 400KG / >30 KG-M 局部放電 < 3PC

15KV

HC-145N



(C. D. =210mm)



HC-145N-A3 HC-145N-B2

訂貨編號: 801.H0145N.A301 801.H0145N.B201

*非標準品, 接單生產



額定 / 耐壓 / 衝擊 - 24 / 60 / 125 KV

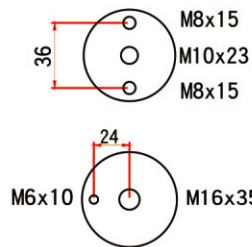
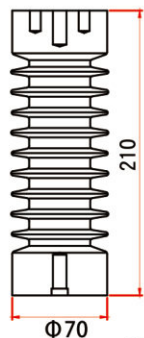
拉伸 / 彎曲 / 扭力 - >2000KG / 400KG / >30 KG-M

局部放電 < 3PC

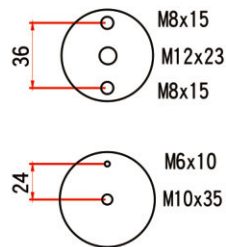
24KV HC-20N



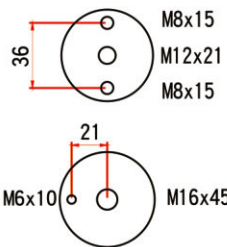
(C. D. =360mm)



HC-20N-A3



HC-20N-C2



J04-125 (IEC60273)
* HC-20N-E3

訂貨編號: 801.H020N.A301 801.H020N.C201 801.H020N.E301

*非標準品, 接單生產

額定 / 耐壓 / 衝擊 - 25 / 80 / 150 KV

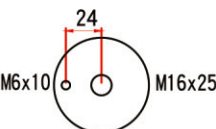
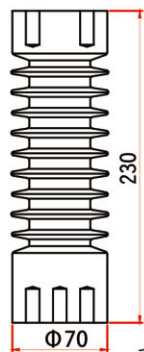
拉伸 / 彎曲 / 扭力 - >2000KG / 500KG / >30 KG-M

局部放電 < 3PC

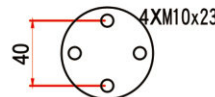
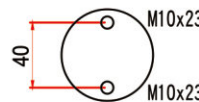
25KV HC-230N



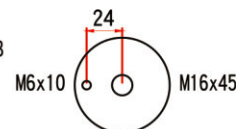
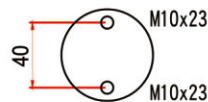
(C. D. =380mm)



* HC-230N-A1



HC-230N-B2



* HC-230N-B1

訂貨編號: 801.H230N.A101 801.H230N.B201 801.H230N.B101

*非標準品, 接單生產

額定 / 耐壓 / 衝擊 - 36 / 80 / 200 KV

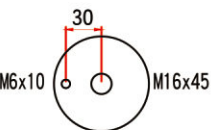
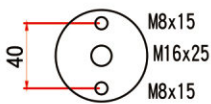
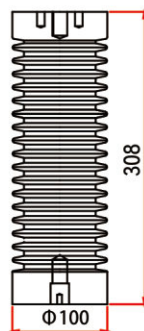
拉伸 / 彎曲 / 扭力 - >3000KG / 800KG / >30 KG-M

局部放電 < 3PC

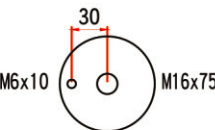
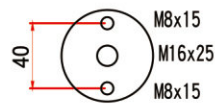
36KV HC-30N



(C. D. =620mm)



HC-30N-A1



HC-30N-A2

訂貨編號: 801.H030N.A101 801.H030N.A201

*非標準品, 接單生產

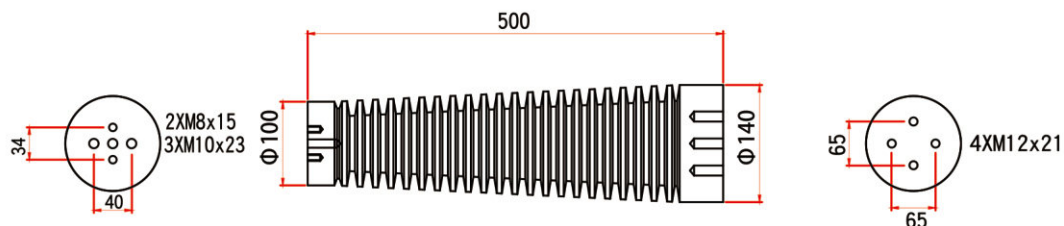
額定 / 耐壓 / 衝擊 - 46 / 95 / 250 KV

拉伸 / 彎曲 / 扭力 - >3000KG / 800KG / >30 KG-M

局部放電 < 3PC

46KV HC-500N-A1 (C. D. =1160mm)

*非標準品, 接單生產
訂貨編號: 801.2H500.A101





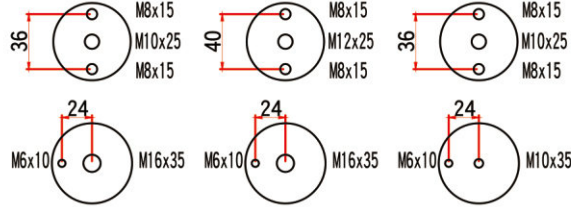
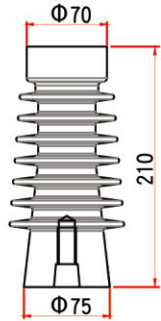
塔錐型 ▶▶▶ 適用於環境無空調之配電室，且有機械強度要求

額定 / 耐壓 / 衝擊 - 24 / 60 / 125 KV 拉伸 / 彎曲 / 扭力 - >2000KG / 600KG / >30 KG-M 局部放電 < 3PC

24KV HC-210A



(C. D. =427mm)



HC-210A-A3

JO4-125 (IEC60273)

*HC-210A-E3

HC-210A-A2

訂貨編號: 801. H210A. A301

801. H210A. E301

801. H210A. A201

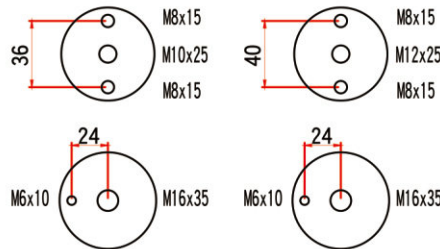
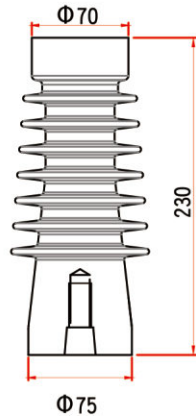
*非標準品，接單生產

額定 / 耐壓 / 衝擊 - 24 / 60 / 150 KV 拉伸 / 彎曲 / 扭力 - >2000KG / 600KG / >30 KG-M 局部放電 < 3PC

25KV HC-230A



(C. D. =447mm)



HC-230A-A3

*HC-230A-E3

訂貨編號: 801. H230A. A301

801. H230A. E301

*非標準品，接單生產

沿面型 ▶▶▶ 適用於特殊環境之配電室，如化工廠、沿海地區

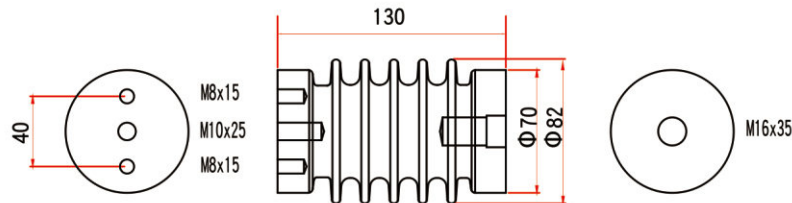
額定 / 耐壓 / 衝擊 - 12 / 36 / 75 KV 拉伸 / 彎曲 / 扭力 - >2000KG / 600KG / >25 KG-M 局部放電 < 3PC

12KV

HC-130D



(C. D. =312mm)



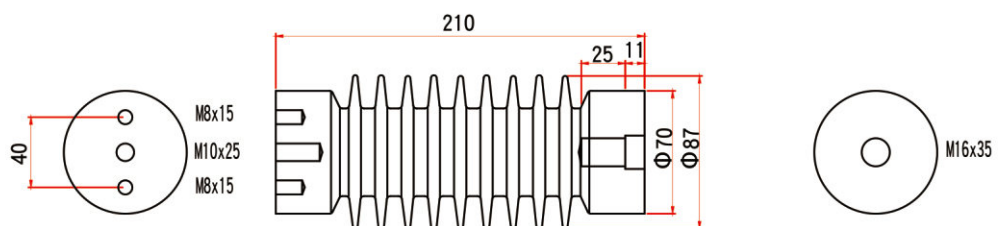
訂貨編號: 801. H130D. A101

額定 / 耐壓 / 衝擊 - 24 / 60 / 125 KV 拉伸 / 彎曲 / 扭力 - >2000KG / 600KG / >25 KG-M 局部放電 < 3PC

24KV HC-210D



(C. D. =487mm)



訂貨編號: 801. H210D. A101

*非標準品，接單生產



裝甲型 ▶▶▶ 適用於以機械強度承載能力為重點考量

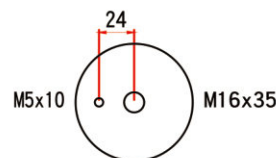
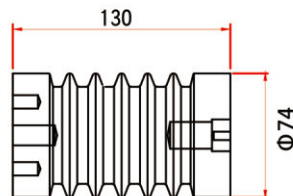
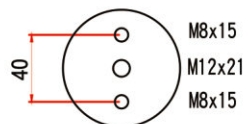
額定 / 耐壓 / 衝擊 - 12 / 36 / 75 KV 拉伸 / 彎曲 / 扭力 - >2000KG / 600KG / >25 KG-M 局部放電 < 3PC

12KV

HC-130L



(C. D. =185mm)



*非標準品，接單生產
訂貨編號：801.H130L.A101

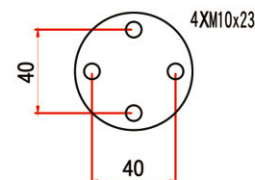
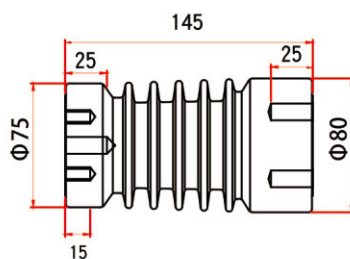
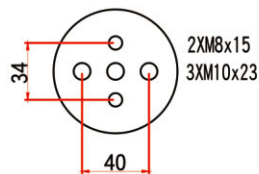
額定 / 耐壓 / 衝擊 - 15 / 36 / 95 KV 拉伸 / 彎曲 / 扭力 - >2000KG / 600KG / >30 KG-M 局部放電 < 3PC

15KV

HC-145L



(C. D. =240mm)



*非標準品，接單生產
訂貨編號：801.H145L.A101

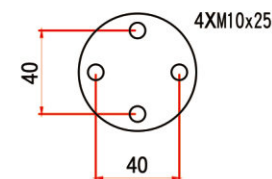
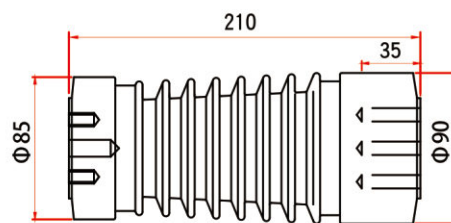
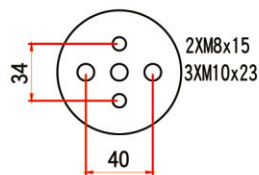
額定 / 耐壓 / 衝擊 - 24 / 60 / 125 KV 拉伸 / 彎曲 / 扭力 - >2000KG / 600KG / >30 KG-M 局部放電 < 3PC

24KV

HC-210L



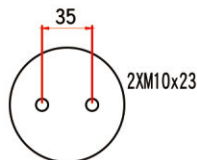
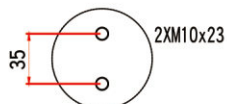
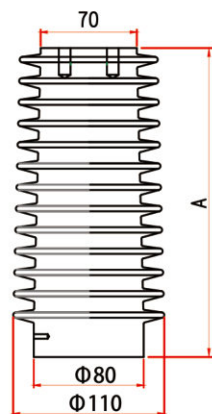
(C. D. =240mm)



*非標準品，接單生產
訂貨編號：801.H210L.A101

拉伸 / 彎曲 / 扭力 - >2000KG / 600KG / >30 KG-M 局部放電 < 3PC

27KV



A	225	240	250
型號	HC-225E-A1	HC-240E-A1	HC-250E-A1
電器特性			
額定電壓	24 KV		25 KV
耐電壓	60 KV		80 KV
衝擊電壓	125 KV		150 KV
爬電距離	526 mm	541 mm	551 mm
局部放電	26.4 KV < 3PC		27.5 KV < 3PC
機械特性			
抗拉破壞	2000 KG		
彎曲破壞	600 KG		
扭轉破壞	30 KG-M		
訂貨編號	801.H225E.A101	801.H240E.A101	801.H250E.A101