



Germain

Germain Electronic Limited

GERMAIN ELECTRONIC PROFILE 2021

Established since 1973 with over 48 years in Lighting & Electronic industry

Message from Director

.....to give our customers an
“awesome Germain experience” by
providing products that are
**INNOVATIVE, DIVERSIFIED,
EFFICIENT**

About us



Hong Kong Headquarters

Kwai Chung, N.T.
15,000 sq/ft office space
Sales Department
Accounting Department
30 Hong Kong Staff



China Factory

Dongguan, Lai Village
75,000 sq/m production space
R&D Department
Quality Department
400 employees

History

14
Aug 1973

Founded in HK
Manufactured Multi-function Flashlight in HK

1989

Set up first China factory in Shenzhen with plastic injection facilities.
Manufactured lighting and personal care products such as emergency light, lantern and shaver.

1992

Factory move from Shenzhen to Dongguan

2000 -
2010

Set up Metal Stamping & Packaging facilities
Expanded product line with SLA Battery & A/V products

2011

Set up Surface Mount (SMT) production facilities

2012

Introduce new product line: AC/DC invertors & Car Booster (Automotive repair)

2014

Introduce new product line: Electrical Garments
Modernized Plastic Injection Facilities

2015

Expanded Diving product category: Spearguns

2016

Modernized Plastic Tooling Department
Set-up CNC Lathing Department, Modernized assembly procedures with cell lines.

Factory

Located in a central Guangdong Province - Dongguan. Main R&D and manufacturing Center.

Manufacturing



23 production lines

"Molding workshop (German EDM Machines (Sodick) CNC Machines (high speed/larger size) "

Plastic injection (Toshiba Electric Injection Double injection machine Robotic Arms)

metal (Stamping extrusion CNC Lathing)

SMT(Surface Mounted Technology)

Pakaging (Clamshell)

Factory

Located in a central Guangdong Province - Dongguan. Main R&D and manufacturing Center.

R&D



German R&D do research understand and adapt to new technology so that more innovative products can come to our life.

- * We were one of the first companies to introduce and acquire CFL manufacturing technology in China back in 1991.
- * We began research and use of LED for General Lighting application as early as 2003.
- * Have know-how in Audio Motorised items and LED lighting design.

R&D perform test in-house:

- * RoHS Test
- * Aging Test
- * Environmental Test
- * Photometric Test*
- * Charging Test
- * Vibration Test
- * ESL life test
- * Salt Spray Test
- * Temperature Test

OEM/ODM Services

Step 1

Product require Assessment

- Industry Design (ID)
- Product Specification
- International Standard Requirement (UL CE...)
- Product development schedule (PDS)

Step 2

Design and Cost Verify

- EE & ME Design
- Cost estimate
- Prototyping

Step 3

Design Validation

- 2nd Prototype may require
- Tooling start
- Engineer build
- Functional Reliability Safety and Aging Test

Step 4

Production Validation

- Quality build
- Pilot Run
- Final specification
- All required test passed
- Cost Review

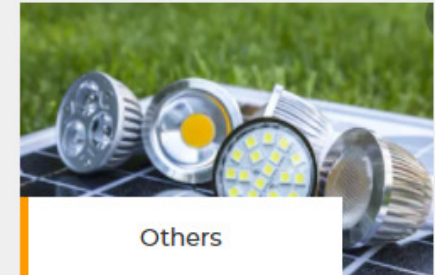
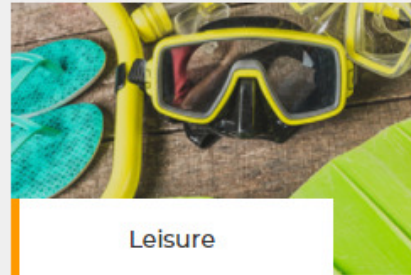
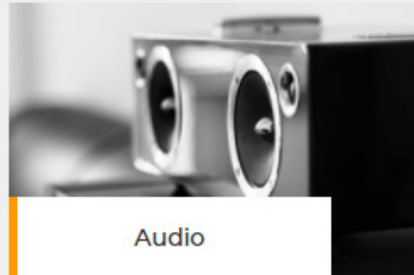
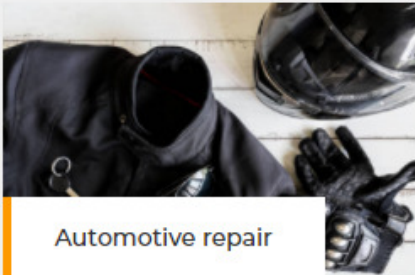
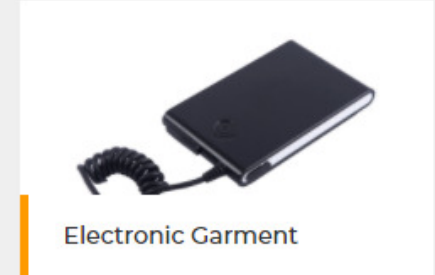
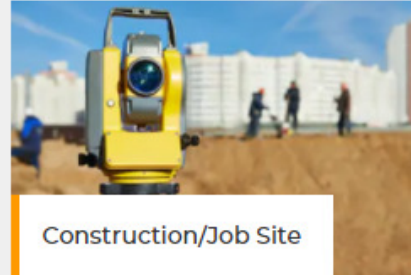
Step 5

Mass Production

- Daily production plan
- Production capacity review
- Delivery



PRODUCT CATEGORY



LED LIGHTING

DISCOVER MORE



~ Thank you ~