



HEAVY-DUTY CONVEYOR PULLEYS

GLOBAL SINDO PERKASA

Telp : 021-5595-7799

Whatsapp : +62 812 8778 6884

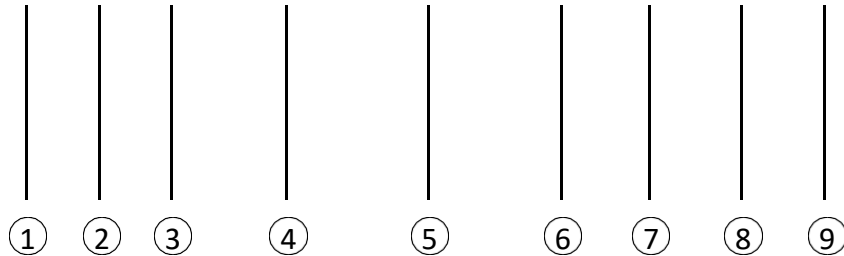
Email : gsp.sales@global-sindo.com

CONTENTS

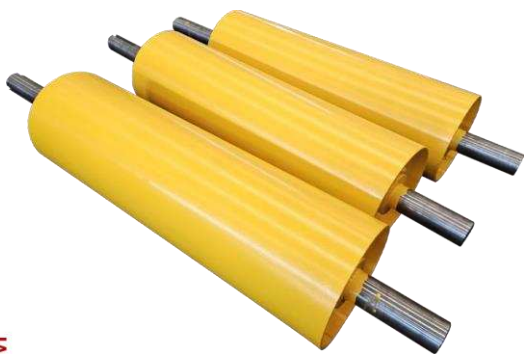
Belt pulley type description-----	P1
Conveyor Pulleys-----	P2
General construction data -----	P3
Shafts options-----	P4
Lagging options-----	P4
Conveyor Pulley Selections-----	P4

Belt pulley type description

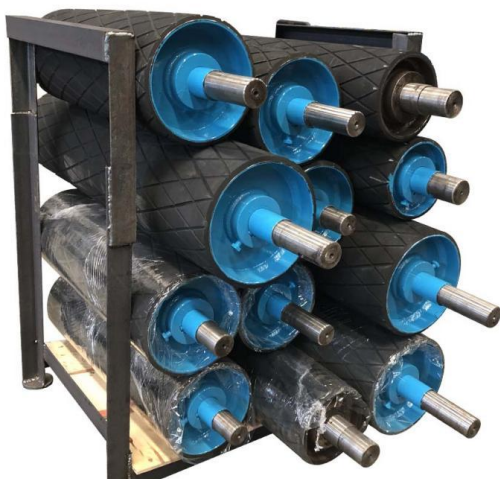
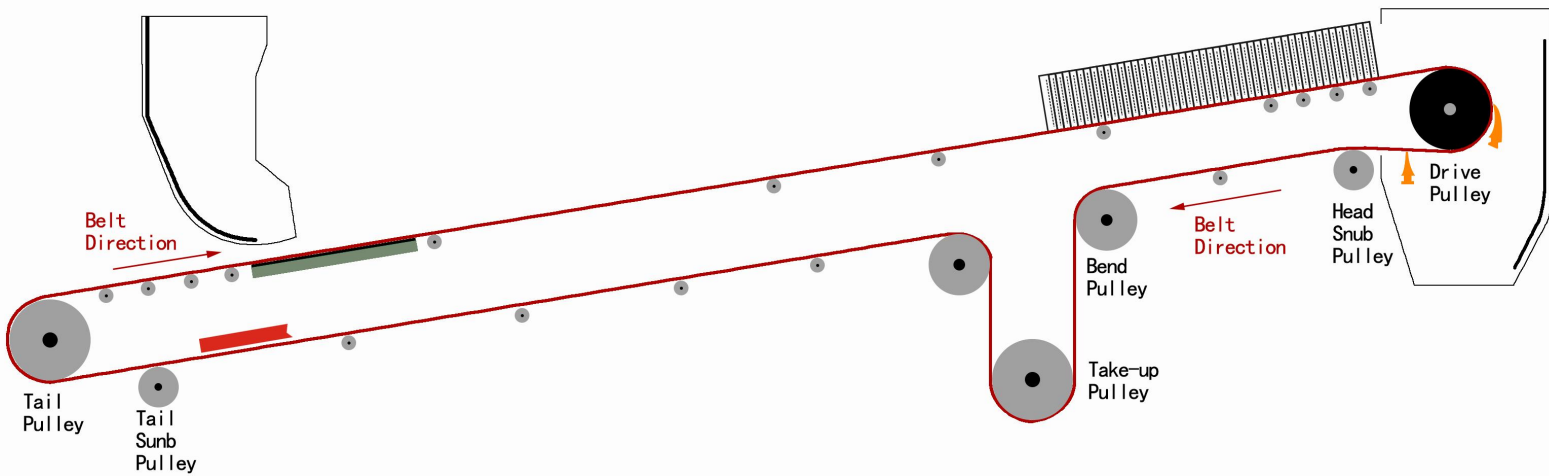
F S D 200 800 XT L 10 H



- ① Face: **C** Crown, **F** Flat
- ② Pulley Type: **S** Standard, **H** Heavy Duty, **M** Mine Duty, **Q** Quarry Duty, **E** Engineered Class
- ③ Pulley Style: **D** Drum, **W** Wing, **C** Clean
- ④ Pulley Diameter: 200 (Unit:mm)
- ⑤ Face Width: 800 (Unit:mm)
- ⑥ Bushing Part Number
- ⑦ Lagging: No suffix, no lagging
- ⑧ Lagging Thickness: 10 (Unit:mm)
- ⑨ Lagging Style: No suffix, lagging is smooth, **H** Herringbone, **D** Diamond Groove, **C** Chevron, **CE** Ceramic, **AC** Arrowhead Ceramic,



Conveyor Pulleys



Equipped with features and performance desired by the world's top miners these Conveyor Pulleys provide the lowest total cost of ownership compared to others.

Head drum also known as a Head Pulley or Drive Pulley are driven by mechanical means to provide movement of the conveyor belt. Tail Drum also known as a Tail Pulley is located at the opposite end of the conveyor belt to the head drum. They provide a direction of rotation for the conveyor belt and can also be used as a tension device in some conveyor designs. These products find their applications in various industrial sectors involving the use of a conveyor belt, especially in Quarrying and Mining.

SINOCONVE can provide these pulleys as per client's specifications, with a variety of surface finishes from plain steel to different forms of lagging including Rubber or Ceramic.



General construction data

SINOCONVE pulleys have been developed using a high degree of security in the dimensioning of the flanges, in the sizing and penetration of the welding and in the assembly between the shell, and pulley end disc.



The conveyor pulley shells are one-piece rolled with single seam weld. The fabrication is accurate in concentricity. All of the shells are static balanced and can be dynamic balanced if required. All conveyor pulley shells are seam welded by MIG process. Continuous wire feeds are employed during the welding process, utilizing an inert gas atmosphere, which guarantees the maximum uniformity and resistance of weld.

Shafts options

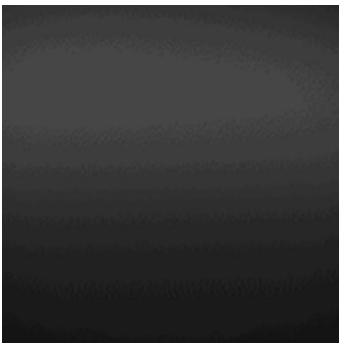


SINOCONVE provides various solutions for your shafting needs. We offer a wide range of materials, from cold rolled to hot rolled.

- Carbon Steel
- Alloy Steel
- Stainless Steel

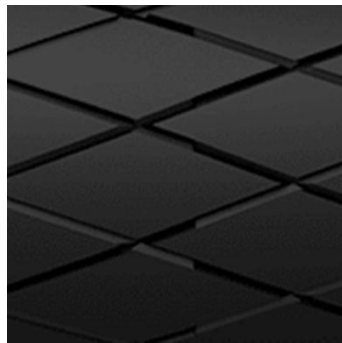
Machining on our CNC lathes, engine lathes, vertical mills, horizontal mills and more, each axis can be precisely modified to the specifications of your unique application.

Lagging options



Smooth

- Snub and bend pulley
- Min. Thickness:6.3mm



DIAMOND

- Bidirectional
- Min. Thickness:10mm



CHEVRON

- Drive pulley
- Min. Thickness:10mm



HERRINGBONE

- Snub and bend pulley
- Min. Thickness:10mm



CERAMIC

- Pulleys greater than 475 PIW
- Min. Thickness:16mm



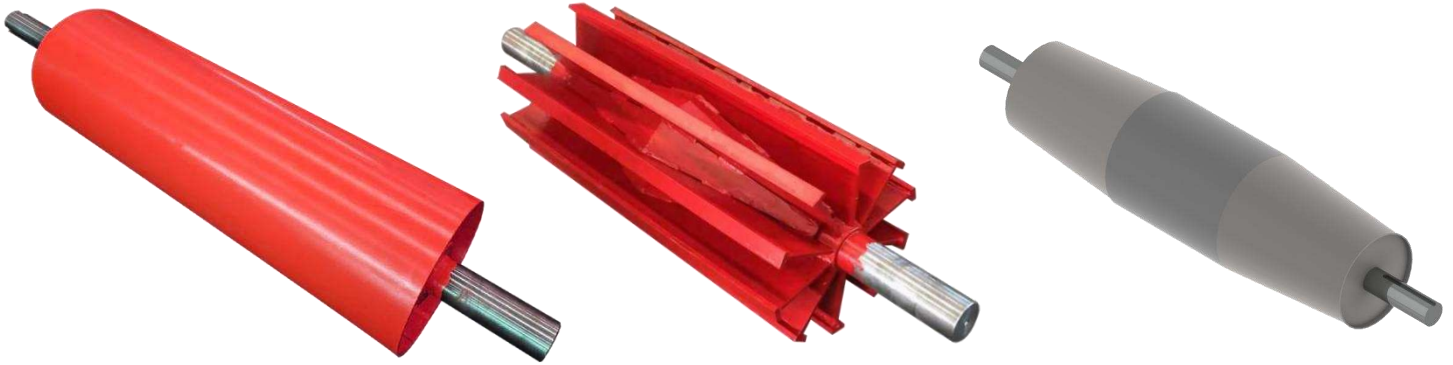
ARROWHEAD CERAMIC

- Pulleys greater than 475 PIW
- Min. Thickness:16mm

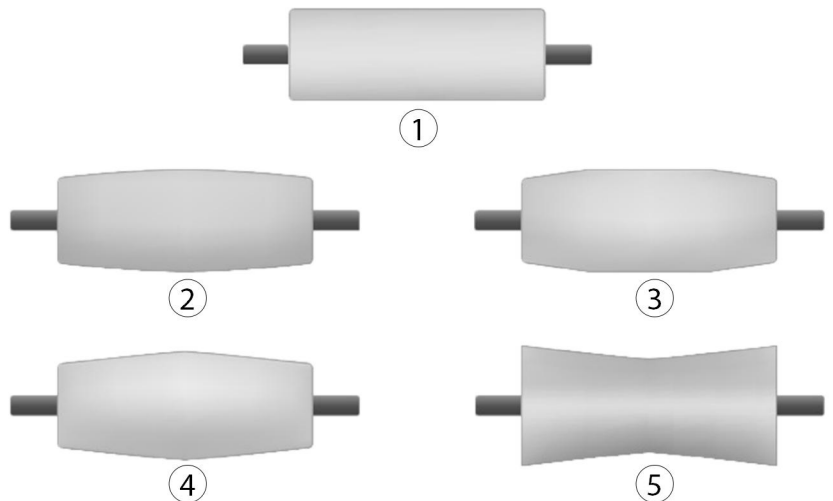
Conveyor Pulley Selections

SINOCONVE supply a wide range of high quality Drive and Non Drive Pulleys used for belt conveyors. These head, tail, take-up and snub pulleys are designed for light to heavy duty applications. These pulleys can be supplied with or without cylindrical or crowned shaped lagging to assist with belt tracking. We also stock self-cleaning Winged and Spiral Pulleys, which have the self cleaning capabilities to remove loose materials that may enter the return side of the conveyor system.

SINOCONVE has the expertise to deliver a variety of shaft configurations and machined surfaces, including live shafts, dead shafts, taper locks, flat crowned, heat stressed, self cleaning and lagged.



- ① Cylindrical
- ② Convex Crown
- ③ Straight Tapper with Center Flat
- ④ Straight Taper
- ⑤ Concave Crown





PT. GLOBAL SINDO PERKASA

Whatsapp : +62 812 8778 6884

Email : gsp.sales@global-sindo.com

SINOCONVE BELT