

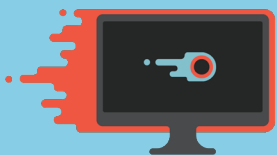


NITROACCELERATOR TURBO FOR SQL SERVER QUICK START EVALUATION GUIDE

What is NitroAccelerator Turbo?

NitroAccelerator Turbo is an innovative technology that compresses network traffic for SQL Server. By optimizing the Tabular Data Stream (TDS) protocol, NitroAccelerator allows for better data transfer performance while reducing network traffic. We have added several features to NitroAccelerator to turbocharge performance including:

- **Adaptive packet compression** dynamically adjusts TCP packet size based on the data
- **HyperCache technology** provides substantial performance benefits by minimizing the transfer of data between endpoints
- **AlwaysOn/Database Mirroring** support allows real-time updates to your high availability environment
- **Compression levels** can be configured to tune performance for your data and environment
- **Encryption** secures network traffic between endpoints
- **SQL Server Analysis Services** support speeds up your OLAP clients, allowing your analysts to complete their work faster



Phone: +1.512.501.5254
sales@nitrosphere.com
www.nitrosphere.com

Install NitroAccelerator Turbo

Server Install

- ◆ Run the NitroAccelerator installer.

Client Install


- ◆ Run the NitroAccelerator installer.
- ◆ Close and relaunch your client applications.

Upgrade from version 5.0 or later

- ◆ Install following the server/client instructions above; no need to remove the old version first.

Upgrade from versions earlier than 5.0


- ◆ Uninstall the previous version.
- ◆ Restart the machine.
- ◆ Install following the server/client instructions above.

 **Note:** When upgrading to version 6.6 or later, all connected Nitro systems must also be upgraded to version 6.6 or later.



NitroAccelerator Configuration Models

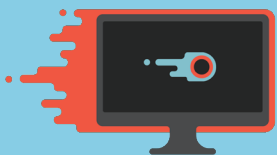
NitroAccelerator is designed to work seamlessly in the client-server model. Any application that is leveraging the TDS protocol using MDAC, SQL Native Client, Java thin or thick drivers, or through any other implementation to connect to a SQL Server, such as SharePoint or SQL Management Studio, can use NitroAccelerator to compress and optimize the traffic.

 **Note:** All clients and servers are not required to have NitroAccelerator installed, but only connections that have NitroAccelerator on both ends will see a performance improvement.

Proving NitroAccelerator

The NitroAccelerator Console, accessible via the system tray or through the Start menu, shows compression statistics for Nitro-enabled connections. The two graphs show the outbound and inbound traffic where the blue lines are the actual compressed traffic and the red lines are what the traffic would be if it were uncompressed.


While these statistics are helpful in determining that NitroAccelerator is installed and running properly, you may want to track other performance measurements to see the full benefit of NitroAccelerator in your environment.



Troubleshooting

If you are not seeing compression statistics in the NitroAccelerator Console, please ensure the following:

- NitroAccelerator was installed under an administrator account, following the instructions at the beginning of this document.
- If you upgraded from a version of NitroAccelerator prior to 6.6, that you also upgraded all connected Nitro systems.
- All client applications that send traffic to SQL Server have been re-launched. Please note that during testing, any time NitroAccelerator has been started or stopped (via the NitroAccelerator Control Console or by starting/stopping the NitroAccelerator Watch service), your client applications must be closed and then re-launched to establish new connections.
- You are connecting through the TCP/IP protocol. This is required in order to benefit from NitroAccelerator. If your system default is another protocol, you can create an alias that uses TCP/IP, and connect to the SQL Server using this alias.

 **NitroAccelerator** includes a Connections dialog that can be helpful in troubleshooting. This tool can be accessed via the Tools menu in the NitroAccelerator Console, or from the main screen using the inbound/outbound connection links (in this case only the inbound or outbound connections will be shown, depending on the link clicked).

The dialog shows SQL Server connections that have been detected by NitroAccelerator. Connections that are being compressed will be shown in blue; uncompressed connections will be red. The info for each connection also includes whether a given connection is using Multiple Active Result Sets (MARS) to communicate with SQL Server, in which case the performance benefits of NitroAccelerator will be limited.

