



01

## In - Game Buttons - MOD1 to MOD6

Set up the In-Game Buttons so the script buttons match your In-Game Button Layout

### 1 Gamepack

MOD1	In-Game
	LB/L1
	Player Run Button

### In-Game Buttons

MOD4	Shot/Volley/Header	(B/CIRCLE)	→
MOD6	Pass Button	(A/CROSS)	→
MOD1	Player run/Modifier	( LB/L1)	→
MOD5	Sprint Button	(RT/R2)	→
MOD2	Protect Ball	(LT/L2)	→
MOD3	Finesse Shot Modifier	(RB/R1)	→



02

## Modifier - MOD7

Modifier button : You can choose between LS/L3 and XBOX ELITE Paddles

This is the button you need to held before pressing the Skills start buttons

MOD7	Modifier
	LS/L3
	(hold) Button

- LS/L3
- XB1 PR1
- XB1 PR2
- XB1 PL1
- XB1 PL2

MOD7	Modifier
	LS/L3
	(hold) Button

When you want to activate one of the skills - press and hold the button 'Modifier' and then press one of the buttons for Skills ( for Ex.: if you want to activate the Skill which was linked to Skill 1 , press and hold 'Modifier' button and then press LB/L1 (if you want the Skill to be performed to the Left or press RB/R1 if you want to perform Skill to the Right ).



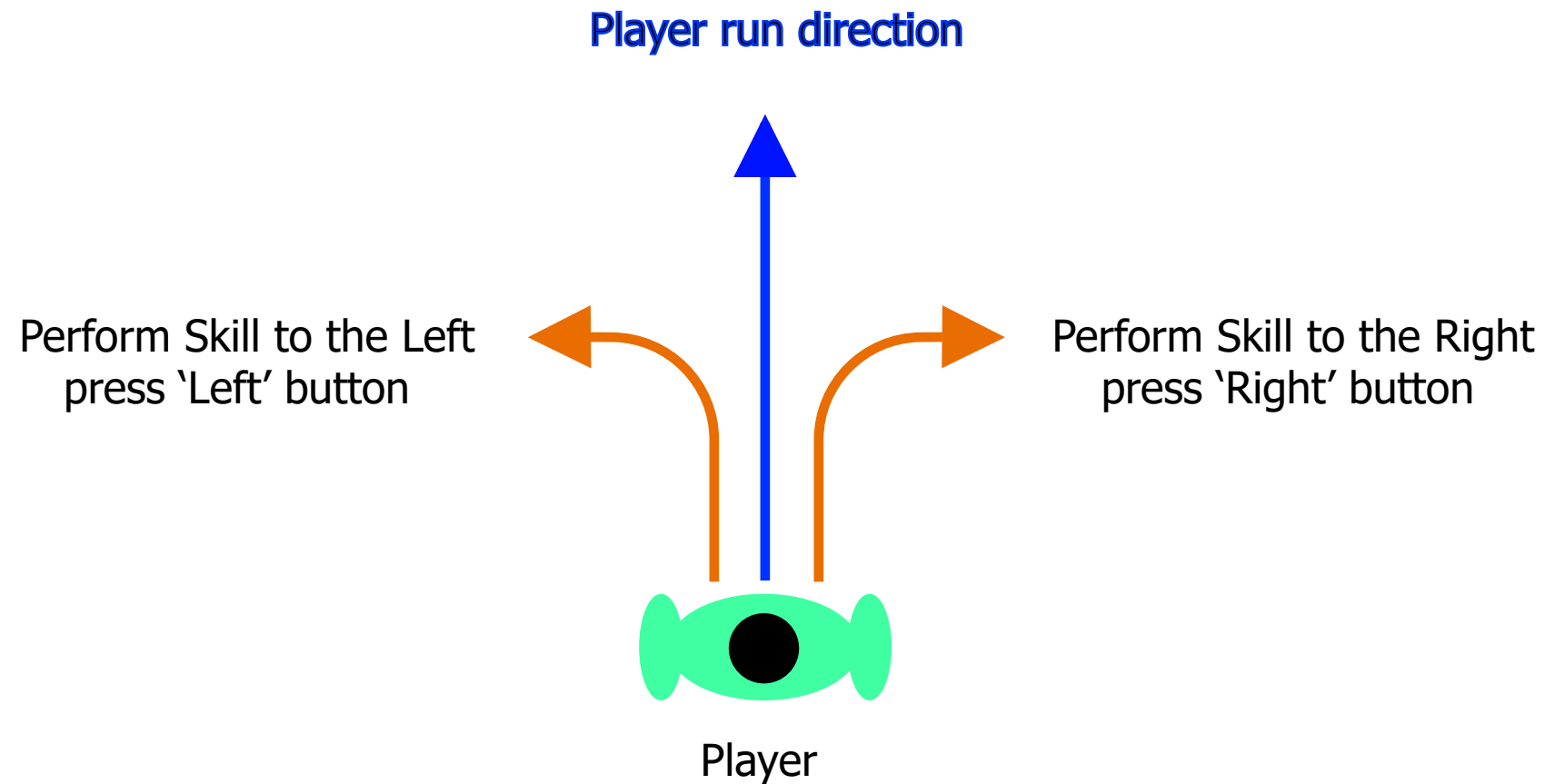
You can instantly perform 4 Skills - linked to Skill 1, Skill 2, Skill 3 and Skill 4.

Skill ID	Modifier Button	Left Button	Right Button
MOD8 Skill 1	Disabled LB/L1 - RB/R1	LB/L1	RB/R1
MOD9 Skill 2	Disabled X/SQUARE - Y/TRIANGLE	X/SQUARE	Y/TRIANGLE
MOD10 Skill 3	Disabled A/CROSS-B/CIRCLE	A/CROSS	B/CIRCLE
MOD11 Skill 4	Disabled on RS / R3	RS/R3	

The image displays four skill configuration panels for a soccer game, arranged in a 2x2 grid. Each panel is titled 'SKILL 1' through 'SKILL 4' and includes a 'MODIFIER BUTTON' section and two directional sections labeled 'LEFT' and 'RIGHT'. Each directional section contains a yellow arrow pointing right, a button label, and a small image of a player performing the skill. A blue plus sign icon is positioned between the left and right directional sections in each panel.

- SKILL 1 (MOD8):** Modifier Button: Disabled (LB/L1 - RB/R1). Left Button: LB/L1. Right Button: RB/R1. Player: Arsenal.
- SKILL 2 (MOD9):** Modifier Button: Disabled (X/SQUARE - Y/TRIANGLE). Left Button: X/SQUARE. Right Button: Y/TRIANGLE. Player: Brazil.
- SKILL 3 (MOD10):** Modifier Button: Disabled (A/CROSS-B/CIRCLE). Left Button: A/CROSS. Right Button: B/CIRCLE. Player: Real Madrid.
- SKILL 4 (MOD11):** Modifier Button: Disabled (on RS / R3). Right Button: RS/R3. Player: Real Madrid.

Keep in mind that some skills doesn't have exit to the left or to the right. We call these skills One Way Skills. In the skills list, all skills from number 1 to number 14 are One-Way Skills. The One Way Skills is best to use with Skill 4 - RS/R3. The Skills from number 15 to 30 have exit to the Left or to the Right. To perform Skill to the 'Left' you must hold 'Modifier' button and then press button 'Left'. To perform Skill to the 'Right' - hold 'Modifier' button and then press button 'Right' .



#### List with all Skills

0. Disabled
1. Fake Shot
2. Heel to Heel Flick
3. Heel Flick Turn
4. Rainbow
5. Drag Back Sombbrero
6. Fake Pass
7. Drag Back Universal
8. Step Over Feint
9. Drag to Drag
10. Hocus Pocus
11. Triple Elastico
12. Elastico
13. Reverse Elastico
14. Cruyff Turn
15. La Croqueta
16. Ronaldo Chop
17. Roulette
18. Flair Roulette
19. Ball Roll
20. Berba / Mcgeady Spin
21. Bolasie Flick
22. Tornado
23. Tree Touch Roulette
24. Alternative Elastico Chop
25. Ball Roll Chop
26. Feint and Exit
27. Feint Left exit Right/ Opposit
28. Lateral Heel to Heel
29. WAKA WAKA
30. Body Feint
- 31. Drag to Heel move**
- 32. Ball Roll Fake Turn**
- 33. Feint Forward & Turn**
- 34. Advanced Croqueta**
- 35. Canceled Three Touch Roulette**
36. Reverse Step Over
37. Fake Drag Back
- new Skills in FIFA 21**



## Penalties MOD12

to be able to ON/OFF Penalties in the game , you must Enable them in config or OLED Menu (OLED Menu : Can Enable In-Game ).

In-Game - to ON/OFF Penalties hold LB/L1 and then press MENU/OPTIONS.

MOD12	Penalties
Cannot	Enable
In - Game	

MOD12	Penalties
Can	Enable
In - Game	

### 2. CHOOSE DIRECTION



### 4. RESET DIRECTION - PRESS RS/R3

### 1. TURN ON PENALTY

HOLD L1 + PRESS OPTIONS



### 3. PERFORM PENALTY

PRESS SHOOT BUTTON

## Free Kicks MOD13

to be able to ON/OFF Free Kicks in the game , you must Enable them in config or OLED Menu (OLED Menu : Can Enable ).

MOD13	Free Kicks	MOD13	Free Kicks
	Cannot Enable		Can Enable
	In - Game		In - Game

In-Game - to ON/OFF Penalties hold LB/L1 and then press VIEW/SHARE .

**1** TURN ON FREE KICK MOD  
hold **L1** + press **SHARE**



**2** AIM AND FIX AIMING  
aim with Left Stick and  
press and hold **R2**



**3** POWER OF THE SHOT  
hold **R2** + press **DIRECTION BUTTONS**



**4** PERFORM FREE KICK

**A.** TOP SPIN FK

press **TRIANGLE**



**B.** SIDE SPIN FK

LEFT SPIN  
press **SQUARE**

RIGHT SPIN  
press **CIRCLE**



**C.** KNUCLEBALL FK

press **CROSS**



**D.** NORMAL FK

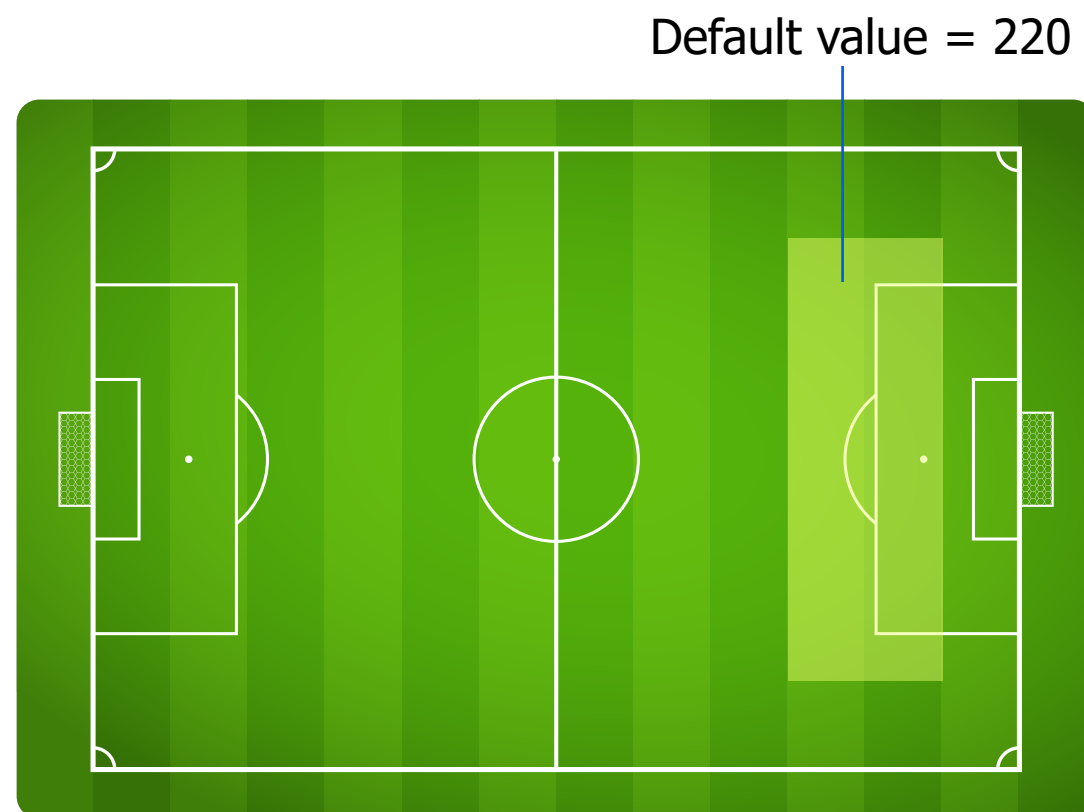
press **L3**



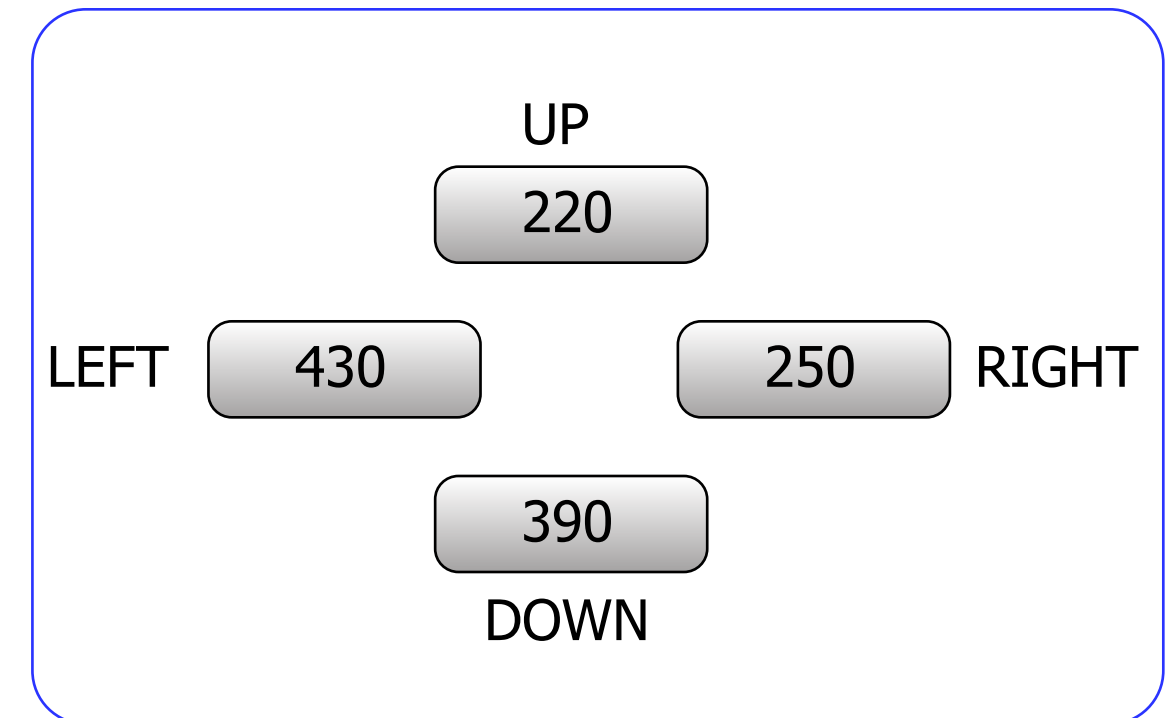
MOD14	Shot Power
Disabled	
Assistance	

MOD14	Shot Power
Shot Power Restrictions	
Assistance	

1. Shoot Power Restrictions - You have 4 different values for the Power of your shoot. You can switch instantly between them by holding LB/L1 and press directional buttons.  
You can shoot with less power but you can't over power your shoot . When you press and hold shoot button to get the needed power the script will check how long you held it and when you reach the restricted value , the script will block the shoot button output to console.  
The default value of 220 is very good for shots outside the penalty and the first half of penalty area ( see the picture below).



hold LB/L1 +





## 2. Finesse Shoot Power Restriction

Finesse Shoot Power Restriction works like shoot power restriction - when you hold Finesse Modifier and press shoot button the script will check how long you held it and when you reach the restricted value , the script will block the shoot button output to console. You can shoot with less power but you can't over power your finesse shoot.

MOD14	Shot Power
Finesse Shot Power Restrictions	
Assistance	



## 3. Timed Finishing

To initiate Timed Finishing, you'll need to double-tap the shoot button when going for goal.

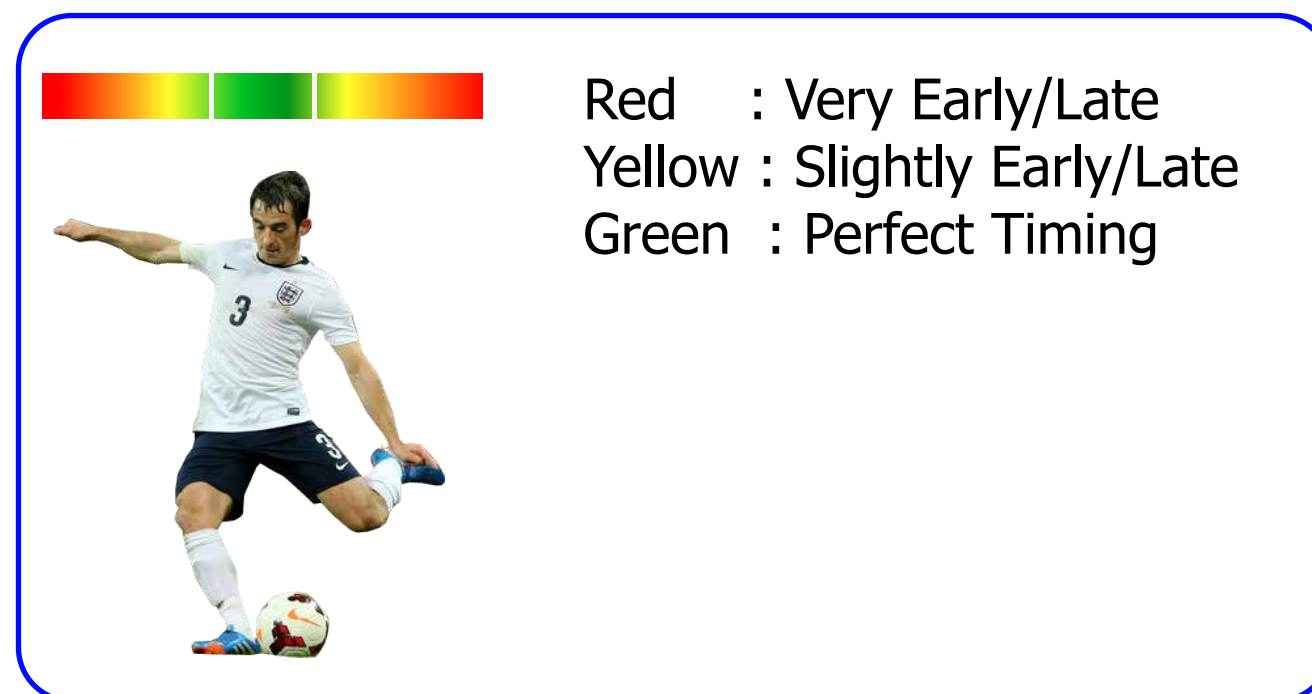
The first tap is to set your power as usual, while the second should be timed just as the player makes contact with the ball.

Timed Finishing also takes different factors into account, such as player skill and the context of the shot.

This includes the shooting angle and the player's current balance.

The script will do exactly this steps to perform Timed Finishing - it will held shoot button for certain time ( default value is 220 ) then will release it for the same amount ( 220 ms ) and then will press shoot button again.

MOD14	Shot Power
Timed Finishing	
Assistance	



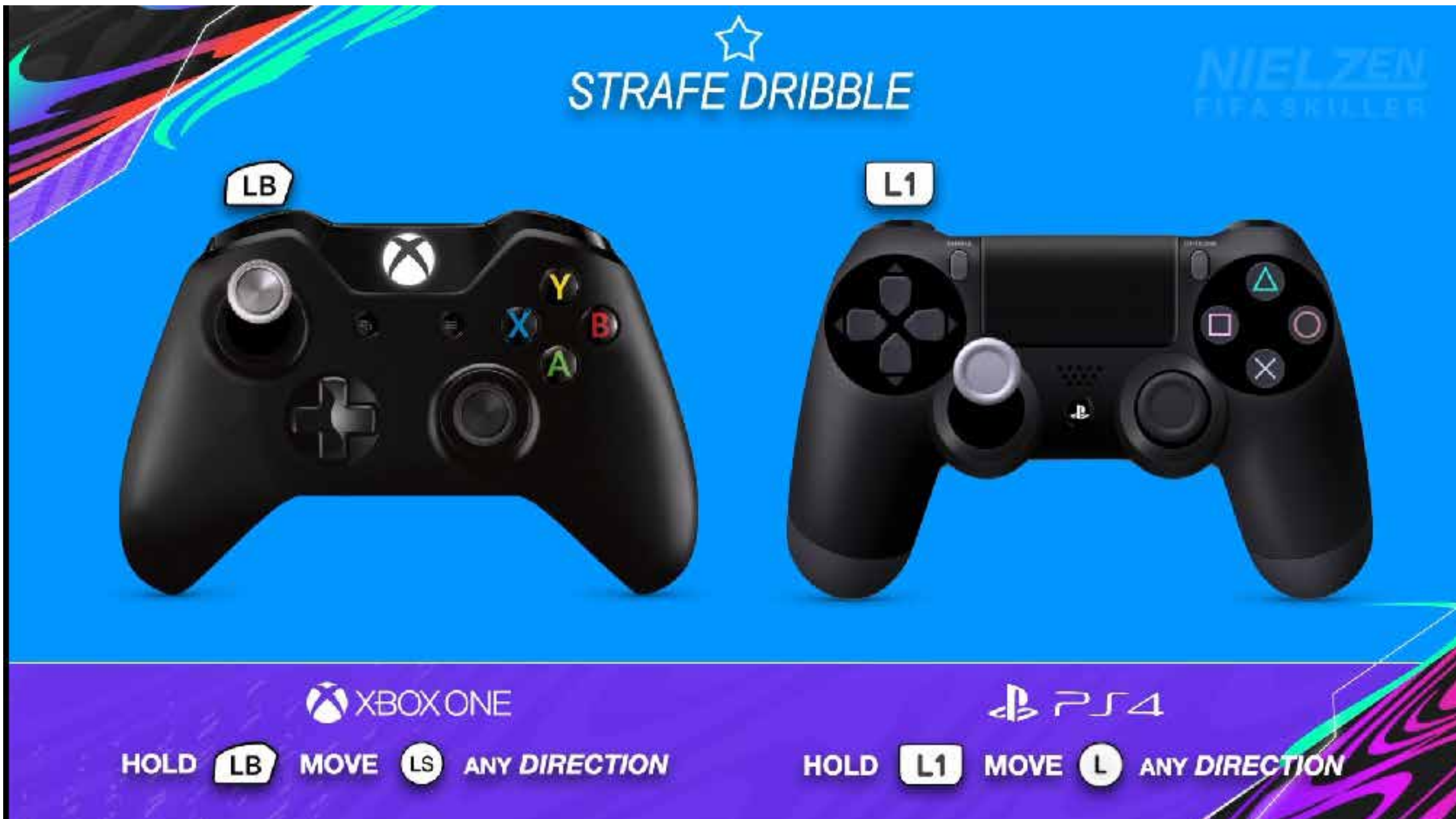


## Speed Boost MOD15

You can immediately reach the maximum speed at which the player can run

MOD15	Speed Boost
Disabled	
hold L1/LB+Sprint	

Hold Player Run Button (default L1/LB) and dribble with Left Stick. When you want to start Speed Boost - press and hold Sprint Button (default R2/RT). Now you can release Player Run Button (default L1/LB). Your player will start sprinting with full speed.



When you want to start Speed Boost - press and hold Sprint Button. Now you can release the Player Run Button ( LB/L1 ).  
Your player will start sprinting with full speed immediately.



08

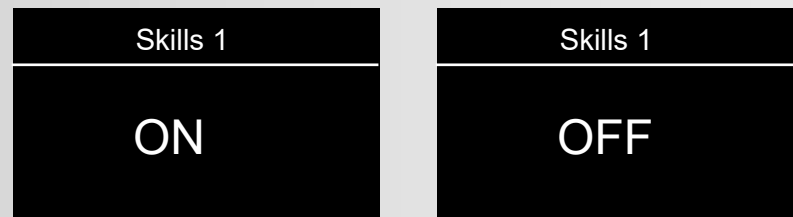
## Quick Toggles Skills in game

With quick toggles you can OFF/ON Skills in game without needing to go to menu

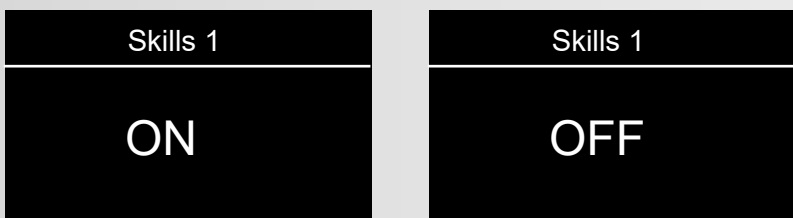
hold **LT/L2** + press **DPAD UP** => OFF / ON **Skills 1**



hold **LT/L2** + press **DPAD DOWN** => OFF / ON **Skills 2**



hold **LT/L2** + press **DPAD LEFT** => OFF / ON **Skills 3**



hold **LT/L2** + press **DPAD RIGHT** => OFF / ON **Skills 4**

