

Cell Membrane and Nucleus

Slides;

1)Liver

2)Skelatal Muscle

3) Bone Barrow

4) Bone Tissue

5) Blood Smear

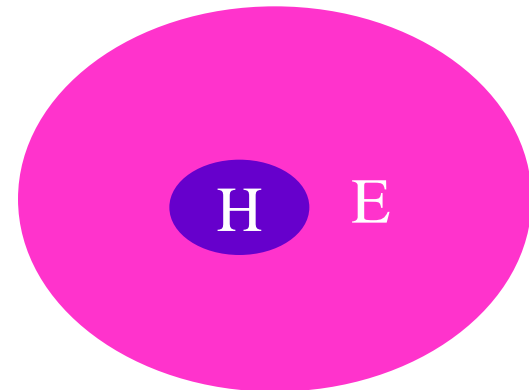
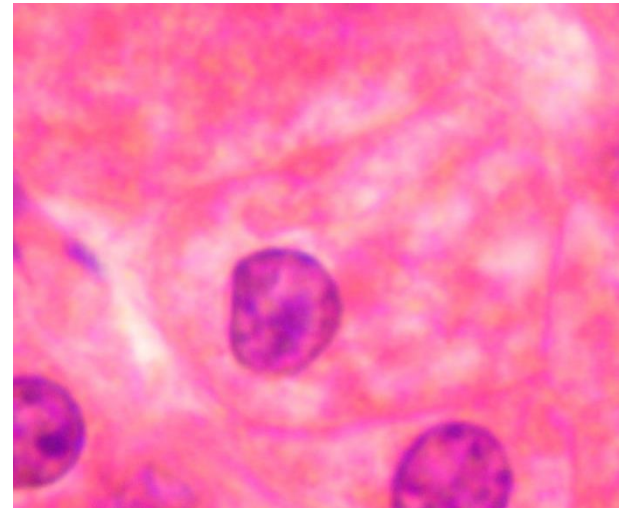
6) Spinal Cord

Cell (H-E)

- **Cell membrane:**
- **7,5-10 nm thick**
- **Not stain very well with H-E**

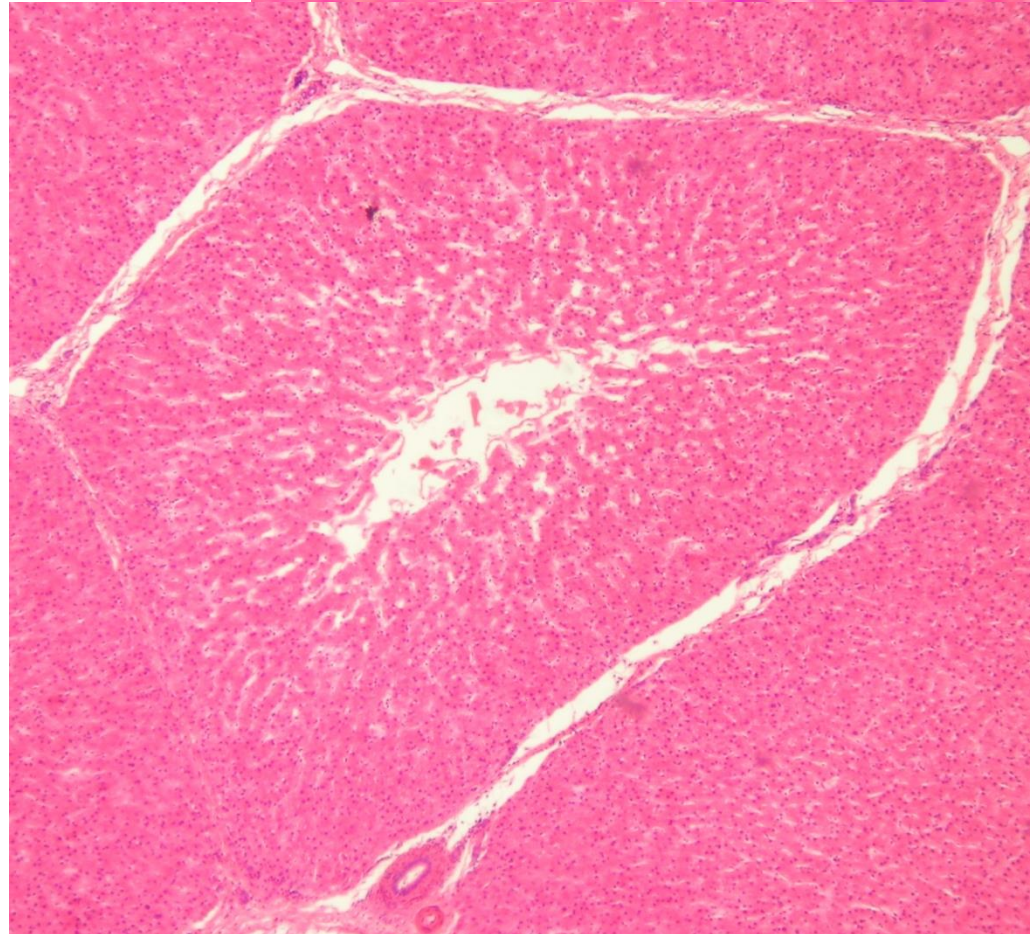
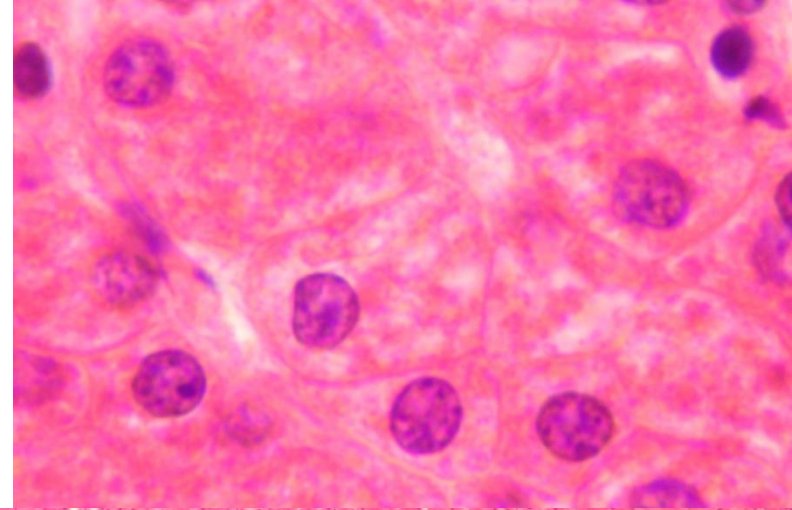
- **Cytoplasm: Eosin-Pink**

- **Nucleus : Hematoxyline-Blue-Purple**

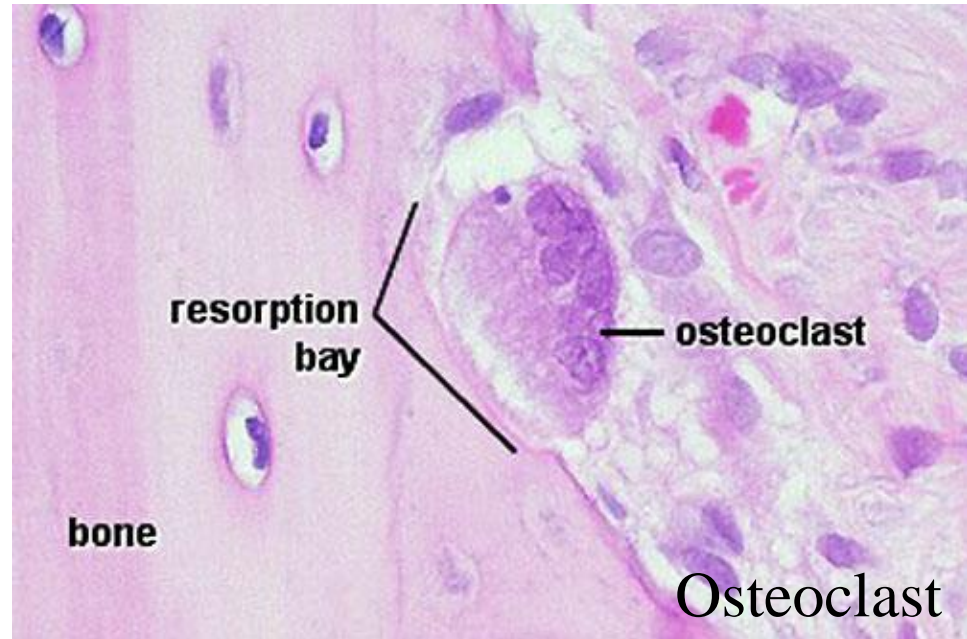
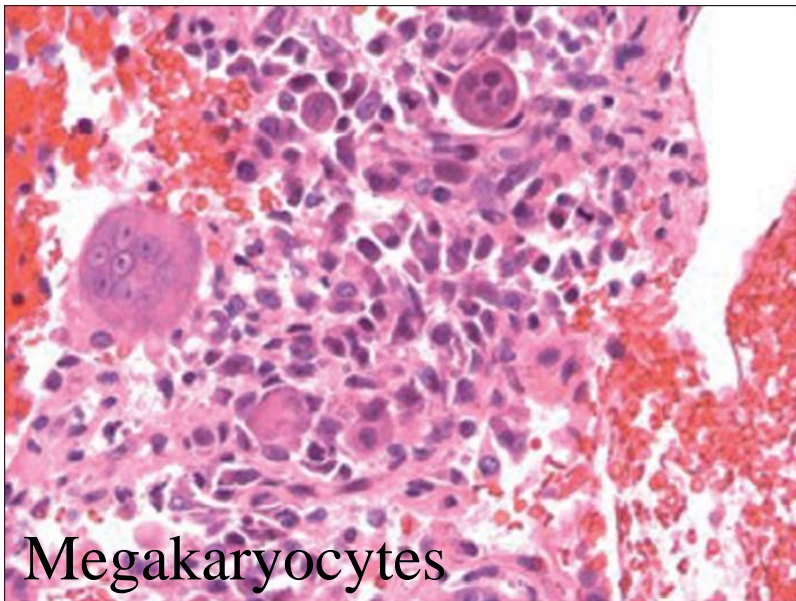
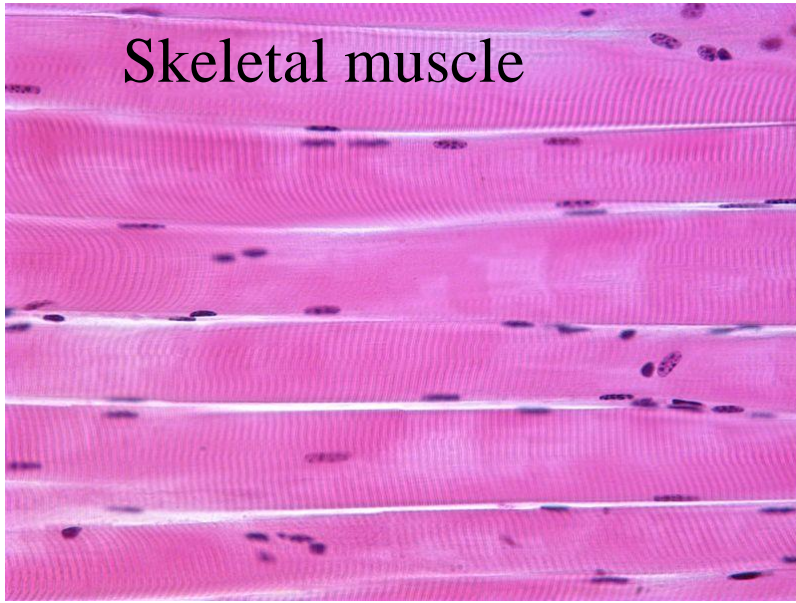


Liver-Hepatocytes

- **Cell membrane identical**
- **One or Two nucleus**
- **Cytoplasm includes a lot of mitochondria**
- **Staine Eosinophilic**
- **Nucleus: Euchromatic**

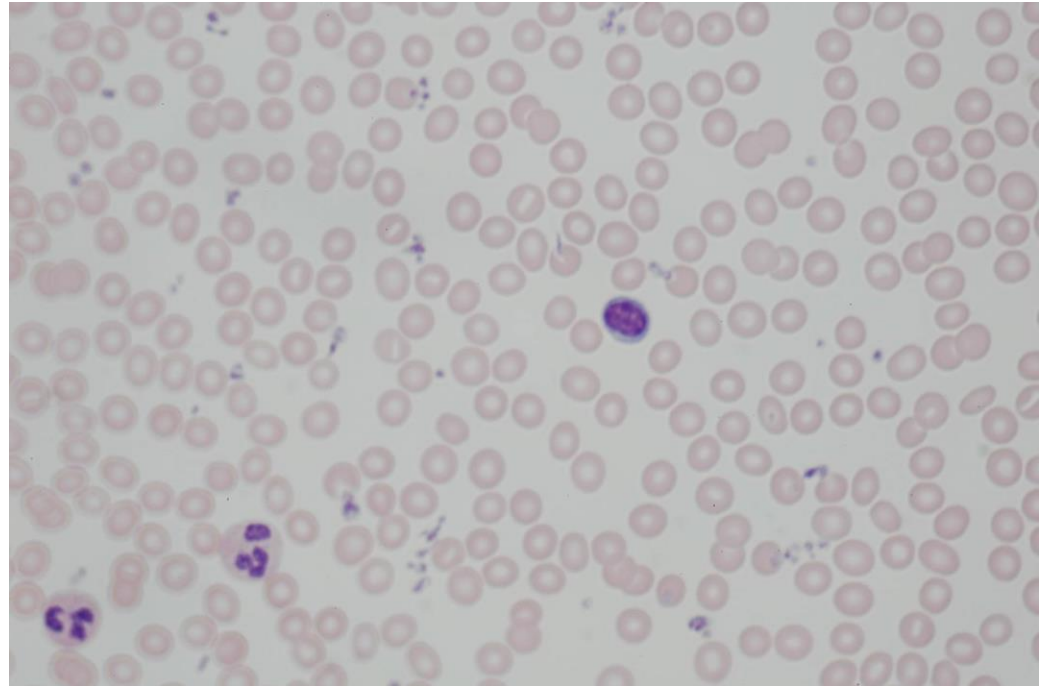


Number of Nucleus

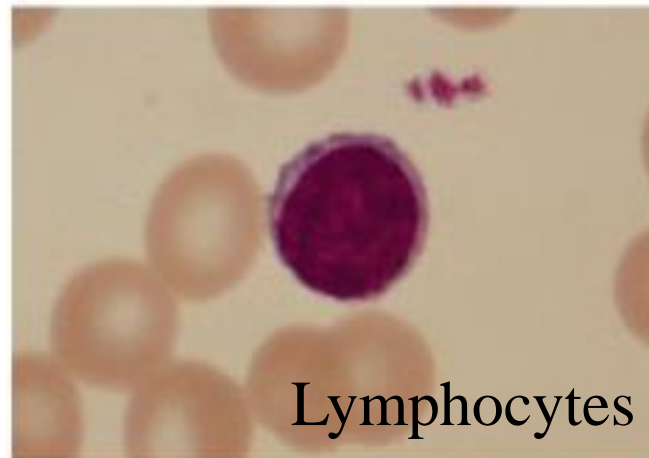


Blood Smear

- Granular leukocytes
 - Neutrophil
 - Eosinophil
 - Basophil
- Lymphocytes
- Monocytes
- Platelets



Blood Smear

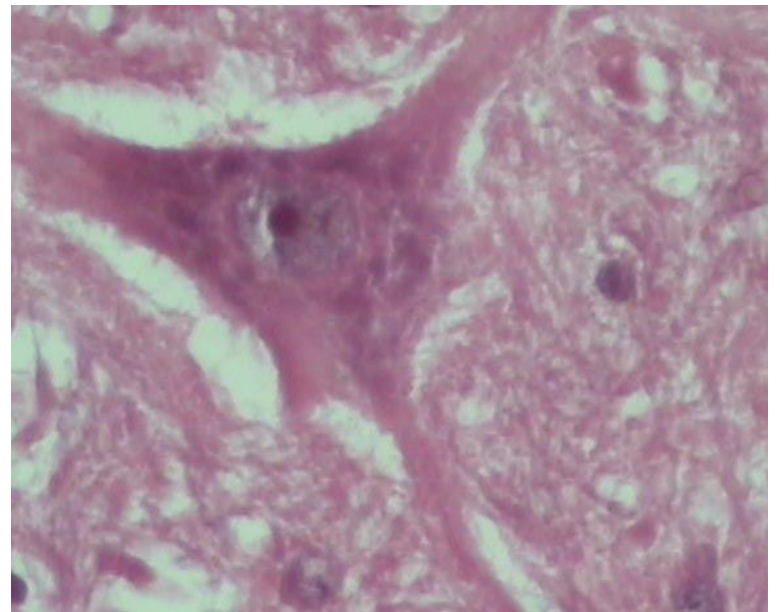


- Fragmentated Nucleus

- Heterochromatic Nucleus

Medulla spinalis- Neuron

- Anterior Horn
- Multipolar neuron cells
- Euchromatic nucleus



Medulla spinalis- Neuron

- Anterior Horn
- Multipolar neuron cells
- Euchromatic nucleus

