

Contite® Seal ACCI

CRYSTALLINE WATERPROOFING SLURRY WITH CORROSION INHIBITOR NO CURING

DESCRIPTION

Contite Seal ACCI is based on OPC, fine graded sand and high grade special chemicals which helps the system to react with free lime and moisture present in the capillary tracts of concrete by means of air curing, without water curing. The unique chemicals present in the formula helps to form insoluble complex crystals penetrating into the capillary tracts of the concrete forming a sub-surface membrane effectively sealing the concrete. The layer formed allows the passage of water vapour from the inside of the structure (the concrete breathes) whilst waterproofing/sealing the surface against sea water, aggressive ground waters, waste water and certain chemical solutions.

In addition reinforcing steel is protected from corrosion by the addition of a corrosion inhibitor.

Contite Seal ACCI is also available with an anti-freeze additive incorporated for applications during the winter season at low temperatures.

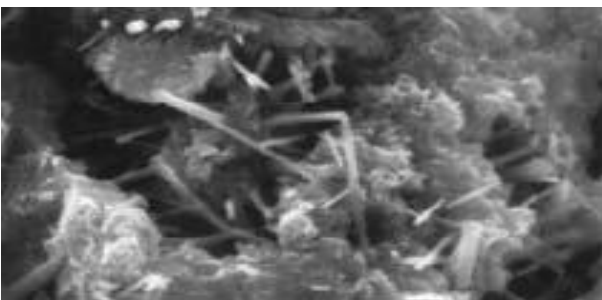
Complies to EN1504 Part 9 and EN1504 Part 2

- Principle 1 : Protection Against Ingress (PI).
Method 1.3 - Surface Coating.
- Principle 2 : Moisture Control. (MC)
Method 2.3 - Surface Coating.
- Principle 5 : Increase in Physical Resistance (PR).
Method 5.1 - Overlays or Coatings.
- Principle 6 : Resistance to Chemicals (RC).
Method 6.1 - Overlays or Coatings.
- Principle 8 : Increasing Resistivity (IR).
Method 8.3 - Overlays or Coatings.
- Principle 9 : Cathodic Control (CC).
Method 9.1 - Limiting oxygen Content (at the cathodic) by Saturation or Surface Coating.
- Principle 11 : Control of the Anodic Areas (CA).
Method 11.3 - Applying Corrosion Inhibitors on Concrete.

USES & ADVANTAGES

Contite Seal ACCI can be applied to all structurally sound concrete. Typical areas of application are :- sewage and waste water treatment tanks, reservoirs, tunnels, manholes, caissons, underground vaults and structures, foundations, parking decks, water tanks and swimming pools. **Contite Seal ACCI** provides concrete protection against waste water, sewage, certain chemical solutions, dilute intermittent acids, carbonation, salt water, sulphates, and other harmful materials.

Contite Seal ACCI is a replacement for the hazardous and tedious method of installing preformed sheet membrane systems for basement waterproofing.



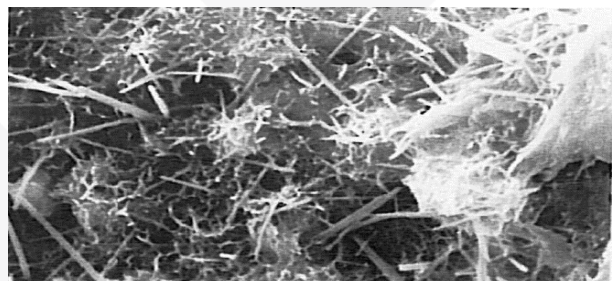
Advantages include:-

- Air curing system. No water curing or polythene sheet covering required after application.
- Forms subsurface membrane.
- Can be used as final topcoat or finish coat.
- Apply by brush, roller or spray.
- Can penetrate deep into the concrete depending upon concrete porosity, grade & mix design.
- Resistant to most aggressive substances in the pH range 3-11 constant contact, and 2-12 periodic contact.
- Protects concrete and steel rebar from deterioration.
- Non toxic, can be used in potable water tanks.
- No solvents. No harmful vapours.
- Can apply to green or moist concrete.
- Protects reinforcement from corrosion.
- Eco friendly green product.
- Fast tracks projects.
- Becomes an integral (internal) part of the concrete and is permanent.
- Seals minor shrinkage cracks and will reactivate after many years in the presence of water.
- Does not require costly surface priming or leveling prior to application as for other coatings.
- Cannot puncture, tear or come apart at the seams as with membrane protection systems.
- Less costly to apply than other systems.
- Does not require protection from backfill.
- Use in underground structures from the inside (negative side).
- Extensively used for concrete repair work and is particularly useful to apply on the negative side of water retaining or underground structures both above and below grade.
- Compatible with SCC and concrete containing PFA and other pozzolanic materials.

PROPERTIES AND COMPLIANCE

| | |
|-----------------------------|--|
| Component : | Single |
| Form: | Fine Grey powder |
| Fresh Wet Density: | Approx. 1.90 kg/ltr |
| Chloride Content: | Nil |
| Water Permeability: | Conforms to BSEN 12390 |
| Toxicity: | Nontoxic BS 6920-1 : 2000. Tested by SGS |
| Chemical Resistance: | Tested to ASTM C-267-77 resists chemicals in pH range 3-11. |
| Yield: | 16.5 ltr/25 kg bag |

** Properties are typical under laboratory conditions and do not constitute a specification. Field trials are recommended.*



Fully developed crystal growth at 28 days within the capillary tracts of concrete blocking flow of water.

Contite® Seal ACCI

CRYSTALLINE WATERPROOFING SLURRY WITH CORROSION INHIBITOR NO CURING

STANDARDS

Conforms to:

- BS EN 12390-8:2009 - Testing Hardened Concrete: Depth of Penetration of Water Under Pressure. Depth of Water penetration @ 5 bar water pressure for 72 hrs - Max 80% of Control.
- Crystal growth depth in the Concrete by SEM - TISTR lab.
- Standard Test method for examination of Water & Waste Water -APHA,AWWA- SGS lab

SUBSTRATE PREPARATION

Concrete surfaces to be treated must be clean and free of laitance, dirt, films, paint, coatings or other foreign matter. The surfaces must also have an open capillary system for the **Contite Seal ACCI** treatment. If surfaces are too smooth the concrete should be acid etched, lightly sandblasted or water blasted. Structural defects such as cracks, faulty construction joints and honeycombing should be routed out to sound concrete and repaired in accordance with Cormix's specification. (It should be noted, however, that **Contite Seal ACCI** is not designed for use in expansion joints or chronic "moving" cracks.)

Horizontal surfaces should preferably have a rough wood float or broom finish.

Wetting Concrete:

Prior to the application of **Contite Seal ACCI** concrete surfaces must be thoroughly wetted with clean water (concrete should be saturated) to aid the proper curing of the treatment and ensure the growth of the crystalline formation deep within the pores of the concrete. Excess surface water should be removed before the application.

MIXING

Mix one 25 kg bag with 7.5 - 8.0 litres of clean potable water. During very hot and humid conditions chilled water may be used. Do not mix too wet otherwise the mix may crack and spall when drying. Always add powder to water.

Mix until smooth and uniform mixture is formed with no lumps. Do not rework stiff material by adding more water. Mix sufficient material to use within 30 minutes.

APPLICATION METHOD

Slurry coat:

Apply **Contite Seal ACCI** with a stiff fiber brush or spray. Scrub well into the damp wall filling all pores and finish with final strokes in one direction. Keep a wet edge. After the first coat has set but while it is still green apply a second coat, if this is not possible prewater before application of the second coat.

Dry Shake Method:

For Newly Poured Concrete - Use **Contite Seal ACCI** directly from the container. Wearing rubber gloves distribute the powder evenly by hand over the freshly poured concrete at 1.6 kg/m² before the final trowelling work. It is recommended to distribute approximately 50% of the powder in one direction with the remaining 50% at right angles to the first application. Release the powder as close to the wet concrete as is possible.

For Under Slab Waterproofing - Ensure that all debris is removed from lean concrete's surface including soil, grease, oil etc. Either apply in slurry coat or sprinkle by dry shake method on to the concrete just before pouring the slab at 1.2 kg/m². If delays in pouring concrete keep **Contite Seal ACCI** moist by mist/fog spraying water.

Existing Joints:

Construction joints, cold joints and non-leaking joints greater than 0.25 mm wide must be routed out to a minimum 25 mm wide by 25 mm in depth to reach sound concrete, the profile of the routed joint should form a "U" shape.

Contite Seal Mortar should be mixed with water to provide a dry pack material which must then be rammed into the routed out joint.

New Construction Joints:

Install **Contite Waterstop** butyl rubber & bentonite waterstop at the centre of the joint at least 7.5 cm. from the concrete exterior. A dry pack sealing strip of **Contite Seal Mortar** should be rammed into a prepared rout at least 25 mm. by 25 mm. optionally & if high water pressure is anticipated a coat of **Contite Seal ACCI** Slurry or dry shake may be applied to the joints surface & over the waterstop at 1.5 kg/m². Keep material moist by mist spraying with water before pouring concrete.

Leaking Cracks:

Should be prepared as above to form a chase of 25mm wide to approximately 35 to 50mm deep. Remove all debris from the work area before proceeding with thorough saturation of the area prior to the next stage of the works.

Dry pack **Contite Seal Mortar** into the prepared rout. The **Contite Seal ACCI** treatment should be applied with a semi-stiff bristle brush, janitor's broom (for large horizontal applications) or with specialized spray equipment.

CURING

Curing is not required. This is an air curing product. During hot and humid conditions to avoid fast water loss, the coating may be protected by using polythene sheet held tightly to the surface for 24 hours after immediate application.

OVERCOATING

All **Contite Seal ACCI** treated surfaces to receive epoxy coating or to be painted must be neutralized with a solution of **Contite Seal ACCI** cleaner. The **Contite Seal ACCI** application has to be aged for a minimum period of two weeks before application of epoxy.

WATER RETAINING STRUCTURES

For concrete structures that hold liquids (e.g. reservoirs, water tanks, etc.), **Contite Seal ACCI** should be allowed to set for 12 days before filling with liquid. Allow at least 48 hours before foot traffic.

For **Contite Seal ACCI** to fully activate may require 2-4 weeks after application.

Contite® Seal ACCI

CRYSTALLINE WATERPROOFING SLURRY WITH CORROSION INHIBITOR NO CURING

CONSUMPTION RATES

Contite Seal ACCI must be uniformly applied under the conditions and quantities specified. When a second coat is required, it should be applied after the first coat has reached an initial set but is still "green" (less than 48 hrs.). Light pre-watering between coats may be required due to drying. For best results, application should take place at temperatures above 40°F (4°C). Use as single coating on above or below grade concrete, or as the first of a two coat application where two coats are required.

Also use as a Dry-Pac for sealing strips (fillets) at construction joints, and for repair of cracks, faulty construction joints and honeycombing and as dry shake on fresh concrete or on lean concrete under slabs. As a general rule, it may be taken that for a two-coat slurry application, the rate of use of **Contite Seal ACCI** should be between 0.5 kg and 0.75 per square meter per coat. As a minimum one coat may be applied at 0.8-1 kg/m². If in doubt consult Cormix International Technical Service. The following is a guide to material consumption.

Dry Shake Method: 1.6 kg/m² before final troweling work.
Backfilled Concrete Surfaces, Internal Walls & Water Retaining Structures: 2 coats applied at 0.75 kg/m² per coat by brush or spray or 1 coat at 1 kg/m².

Backfilled Concrete Surfaces with Hydrostatic Pressure: 2 coats at 0.75-1 kg/m²/coat or one coat at 1 kg/m². If high hydrostatic pressure is anticipated consult Cormix.

Construction Joints: 1.5 kg/m² applied in slurry coat or dry powder consistency just before pouring concrete.

Blinding Concrete: 1.2 kg/m² applied in slurry coat or dry powder consistency just before placing overlying concrete slab.

Concrete Slabs: Dry shake method as above or apply in one slurry coat of 1 kg/m².

LIMITATIONS

- Do not immerse in water retaining structures until 12 days old.
- Allow at least 48 hours to cure before subjecting to foot traffic.
- Protect against drying out.
- To fully activate the material may require 2-4 weeks.
- If high hydrostatic pressure is anticipated consult Cormix.
- Do not apply to dry surfaces.

PACKAGING

Contite Seal ACCI is supplied in 25 kg plastic lined paper bags or 25 kg plastic pail.

STORAGE & SHELF LIFE

Store in dry conditions out of sun. Shelf life up to 12 months stored properly in original unopened packaging. Shelf life may be shortened at high humidity or temperatures.

HEALTH & SAFETY

Contite Seal ACCI is alkaline, use protective gloves, glasses and protect skin. If gets into eyes clean out with water immediately, wash off skin with soap and water immediately.

TECHNICAL SERVICE

The Cormix International Technical Service Department is available to assist you in the correct use of our products and its resources are at your disposal entirely without obligation.

QUALITY ASSURANCE

ISO 9001: 2015 verified by TUV Nord.

ISO 14001 : 2015 verified by Lloyd's Register International.

DISCLAIMER

Performance data is achieved testing in accordance with International Standards. Testing by others may result in different results from those published as a result of external factors such as poor sampling, incorrect mixing, varying temperatures, curing, crushing procedures etc. Cormix does not take responsibility nor need to defend others testing that does not achieve the published data. The user must test the products suitability for the intended application and purpose. Cormix reserves the right to change the properties of the product. Site conditions and differences in materials are such that no warranty or fitness for a particular purpose, nor liability can be inferred from the published data sheet, written recommendations or from other advice offered.

CONTACT DETAILS

Cormix International Limited

89 Romklao Rd., Sansab, Minburi, Bangkok 10510

Tel. (66 2) 917 3955-8

Fax. (66 2) 917 3959

<http://www.cormix.com>

E-mail: info@cormix.com