

Think Controls

FOTEK

T12 series Infrared auto-door sensor 自動門專用光電傳感器



- 防水等級：IP-66
- 堅固結構：充填環氧樹脂
- 高效率發射IR LED延長壽命
- 採用特殊非球面透鏡提升2倍安裝距離
- 超強耐外亂光，不受一般照明燈光干擾
- Protection class：IP-66
- Compact structure filled with Epoxy
- High efficient emitting LED to extend life
- Asic-spherical Lenz to extend double sensing distance
- Anti-interrupted by general lighting instrument

CE RoHS

KU-30 series U type photo-electric sensor

升降機專用U型光電傳感器



- 防水等級：IP-66
- 高效率發射IR LED延長壽命
- 超強穿透力可有效防塵防油污
- 超強耐外亂光，不受一般照明燈光干擾
- 採用調變回路有效提升穿透力及抗干擾力
- Protection class：IP-66
- High efficient emitting LED to extend life
- Proof of oil contamination & dust
- Anti-interrupted by general lighting instrument
- Enhance penetrability&Anti-interrupted by modified circuit



陽明電機股份有限公司
FOTEK CONTROLS CO., LTD.

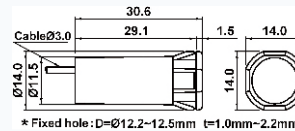
- * 高效率發射IR LED延長壽命
- * 採用特殊非球面透鏡提升2倍安裝距離
- * 超強耐外亂光，不受一般照明燈光干擾
- * 堅固結構：充填環氧樹脂
- * 防水等級：IP-66



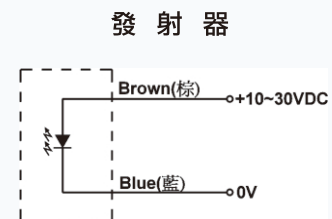
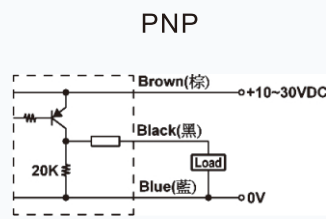
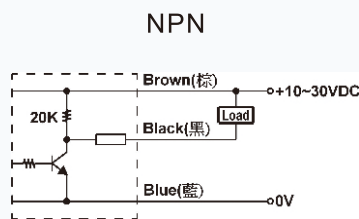
Specification / 規格

Model	型號	T12-6MN	T12-6MNB	T12-6MP	T12-6MPB	T12-20MN	T12-20MNB	T12-20MP	T12-20MPB
Output method	輸出方式	NPN	NPN	PNP	PNP	NPN	NPN	PNP	PNP
Output status	輸出狀態	NO	NC	NO	NC	NO	NC	NO	NC
Sensing distance	安裝距離	8 M min.				24 M min.			
Sensible object	最小檢測物	Non-transparent object 10.0Φ min.				Non-transparent object 20.0Φ min.			
Operating voltage	工作電壓	10 ~ 30 VDC							
Current consumption	耗電流	Tx < 20 mA ; Rx < 16 mA							
Output current	輸出電流	150 mA max.							
Light source	發射光源	Infrared LED							
Response time	反應時間	1 ms max.							
Protection circuit	保護回路	Short circuit & polarity reversed							
Voltage drop	輸出壓降	0.8V max.							
Residual voltage	殘餘電壓	0.1V max.							
Leakage current	洩漏電流	0.1mA max.							
EMC Immunity		ESD : 8 KV Air Discharge (Level3) / EN-61000-4-2 ; RF Interference : 10V / M / ENV-50140 ; Burst test : 2KV / EN61000-4-4							
Protection class	保護等級	IP-66							
Dielectric strength	電介強度	2.5kv / 1 minute min.							
Insulation strength	絕緣強度	100 MΩ / 500vdc							
Approval	安規	CE / RoHS							
Illumination	耐外亂光	Sunlight > 100,000 Lux. ; Lamplight > 20,000 Lux.							
Operating temp	使用環境	- 20°C ~ +80°C ; 35 ~ 85% RH							
Cable	出線	Tx : 3Φ/2C-7m (26AWG) ; Rx : 3Φ3C-7m (26AWG)							
Material	材質	Housing : Intensive PC (UL-94V0) ; Lenz : PMMA							

Outline dimension 外形尺寸



Connection diagram / 接線圖



Notice of using / 使用注意事項

1. 請勿使用溶劑擦拭傳感器鏡頭。(Please clean the Lens with the dry cloth , but don't use solvent.)
2. 請勿安裝在有腐蝕性氣體的環境。(Please don't install in the corrosive circumstance.)
3. 避免太陽光或滷光燈直接照射接收器。(Please avoid from the sun light or spotlight direct raying.)
4. 並排安裝間隔距離小於30cm時請將發射器與接收器交叉安裝。
(If the spacing of installing side by side less than 30cm, Please intersect the Emitter and Receiver.)
5. 本產品建議安裝場所：1> 室內， 2> 污染等級3, 3> 安裝類別II。
(Installation environment : 1> Indoor use, 2> Pollution degree 3, 3> Installation category II)

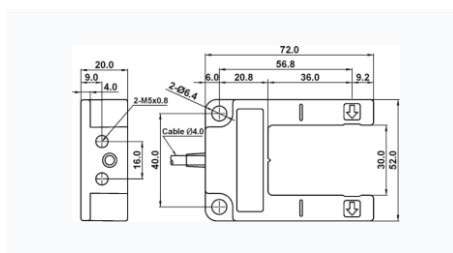
- * 高效率發射IR LED延長壽命
- * 採用調變回路有效提升穿透力及抗干擾力
- * 超強耐外亂光，不受一般照明燈光干擾
- * 超強穿透力可有效防塵防污
- * 防水等級：IP-66



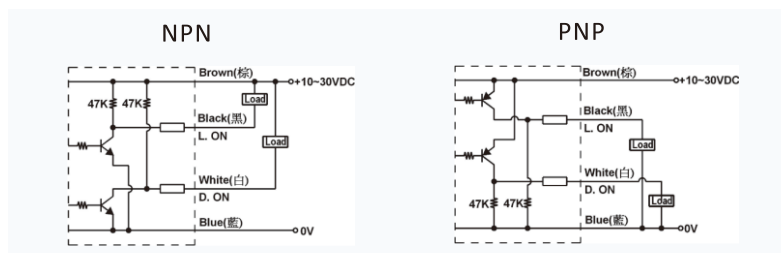
Specification / 規格

Model	型號	KU-30N	KU-30P
Output method	輸出方式	NPN NO / NC (two output)	PNP NO / NC (two output)
Sensing distance		30.0mm	
Sensible object		Non-transparent object 5.0 ϕ min.	
Operating voltage	工作電壓	10 ~ 30 VDC	
Current consumption	耗電流	20mA max.	
Output current	輸出電流	150 mA max.	
Light source		Infrared LED	
Response time		1 ms max.	
Protection circuit	保護回路	Short circuit & polarity reversed	
Voltage drop	輸出壓降	0.8V max.	
Residual voltage	殘餘電壓	0.1V max.	
Leakage current	洩漏電流	0.1mA max.	
EMC Immunity		ESD : 8 KV Air Discharge (Level3) / EN-61000-4-2 ; RF Interference : 10V / M / ENV-50140 ; Burst test : 2KV / EN61000-4-4	
Protection class		IP-66	
Dielectric strength	電介強度	2.5kv / 1 minute min.	
Insulation strength	絕緣強度	100 M Ω / 500vdc	
Approval	安規	CE / RoHS	
Illumination	耐外亂光	Sunlight > 20,000 Lux. ; Lamplight > 5,000 Lux.	
Operating temp	使用環境	- 20 C ~ +80 ; 35 ~ 85%RH	
Cable	出線	4 /4C-2m (26AWG)	
Housing material	外殼材質	Intensive Polyimid(UL-94V0)	

Outline dimension / 外形尺寸



Connection diagram / 接線圖



Notice of using / 使用注意事項

1. 請勿使用溶劑擦拭傳感器鏡頭。
(Please clean the Lens with the dry cloth , but don't use solvent.)
2. 請勿安裝在有腐蝕性氣體的環境。
(Please don't install in the corrosive circumstance.)
3. 避免太陽光或滷光燈直接照射接收器。
(Please avoid from the sun light or spotlight direct raying.)

※ 以使用者角度設計

『實用耐用的電控產品』

※ 以量產標準化製造

『世界標準的電控產品』

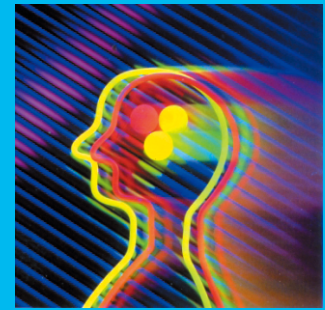
※ 以滿足客戶需求追求

『企業永續經營』

※ On user's position, to develop
more 「Performance & Reliable controls」

※ By mass-quantity producing, To produce
「World standard controls」

※ By satisfying customer's requirements,
To manage company foreverly.



Think Controls

FOTEK

陽明電機股份有限公司
FOTEK CONTROLS CO., LTD.

Copy right @FOTEK CONTROLS CO., LTD.
2012/8/30

Specification may be modified without notice in advance
規格變更恕不事先通知