

FOTEK

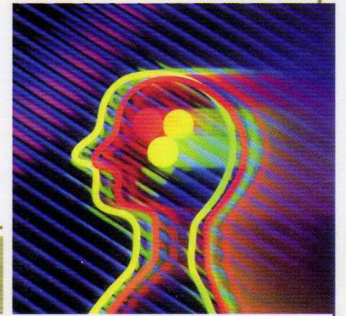
Magnetic Incremental Rotary Encoder

電磁式增量譯碼器

CE RoHS



- High Reliability
- High Noise Resistance
- Wild operating voltage
- Low current consumption
- Harsh circumstances suitable
- 高可靠度
- 高抗干擾力
- 廣泛工作電壓範圍
- 低耗電高效能
- 適用於惡劣環境不怕粉塵



◆ Guiding of model [Incremental type] / 型號索引

Ex: **MES - 2500 D - 8Φ - T**
 1 2 3 4 5

1	Product (產品代號) : 「MES」= 40Φ Magnetic Incremental Encoder 「MET」= 50Φ Magnetic Incremental Encoder	3	Output method (輸出方式) : 「Non」= NPN+PNP (Push-Pull) 「D」= Line driver
2	Resolution (解析度) : 10PPR ~ 2500PPR 「05」= 5 PPR ; 「500」= 500 PPR ; 「2500」= 2500 PPR	4	Shaft diameter (轉軸外徑) : 「Non」= 6.0 mm ; 「8Φ」= 8.0 mm
5	Option (附加功能) : 「T」= 「Phase T」 output appended ; 「PG」= M12 Lead wire ; 「M12」= M12 connection (MET only)		
Note	1> Pulse per Revolution (PPR) 5, 10, 20, 30, 40, 50, 60, 100, 120, 150, 180, 200, 250, 300, 360, 400, 500, 512, 600, 720, 800, 1000, 1024, 1200, 1500, 1800, 2000, 2048, 2500 2> It is accepted to manufacture for special resolution. 可接受訂製非規格的解析度。		

◆ Electrical Specification / 電氣規格

Output method	輸出方式	Push - Pull	Line Driver
Operating voltage	工作電壓	5 ~ 30VDC	5VDC ±10%
Output method	輸出方式	NPN + PNP	Line driver IC
Response frequency	響應頻率	30K Hz min..	
Current consumption	耗電流	40 mA max.	40 mA max.
Ripple of power	電源漣波	10% peak to peak	
Output current	輸出電流	100mA max.	20mA max.
Protection circuit	保護回路	Short circuit & polarity reversed	Polarity reversed
Voltage drop	輸出壓降	0.6V max.	
Residual voltage	殘餘電壓	0.1V max.	
Leakage current	洩漏電流	0.1mA max.	
Noise resistance	抗干擾	2kv / 1μs	
Dielectric strength	電介強度	2.5kv / 1 minute min.	
Insulation strength	絕緣強度	100 MΩ / 500vdc	
Approval	安規	CE / RoHS	

◆ Connections / 接線圖

Push-Pull (推拉式)		
Connector No.	Color	Description
# 1	Brown	+ V (1)
# 3	Blue	0 V (3)
# 4	Black	Phase A (4)
# 2	White	Phase B (2)
# 5	Yellow	Phase Z (5)
Non	Grey	Phase T (6)

Line driver (差動式)			
Color	Description	Color	Description
Brown	+ V (1)	Blue	0 V (3)
Black	Phase A (4)	Blue/Red	Phase A(9)
White	Phase B (2)	White/Red	Phase B(10)
Yellow	Phase Z (5)	Yellow/Red	Phase Z(11)

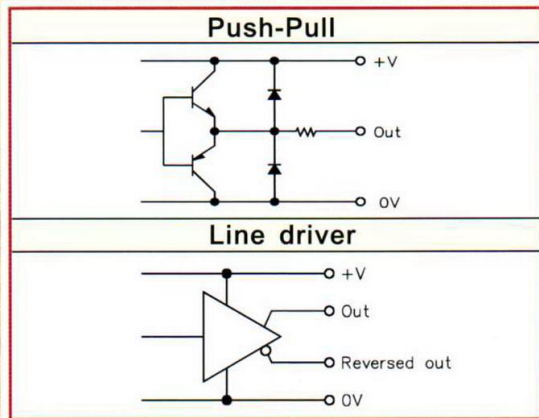
◆ Mechanical Data / 機械規格

Specification	規格	Data
Starting torque	起動力矩	0.098 kg-m
Shaft moment of inertial	慣性力矩	1x10 ⁻⁶ kg-m ²
Shaft loading	轉軸負載	Radial < 300 kg ; Axial < 200kg
Rotational speed max.	最大轉速	6000 RPM
Housing material	外殼材質	Intensive PPS
Shaft material	轉軸材質	SUS-316

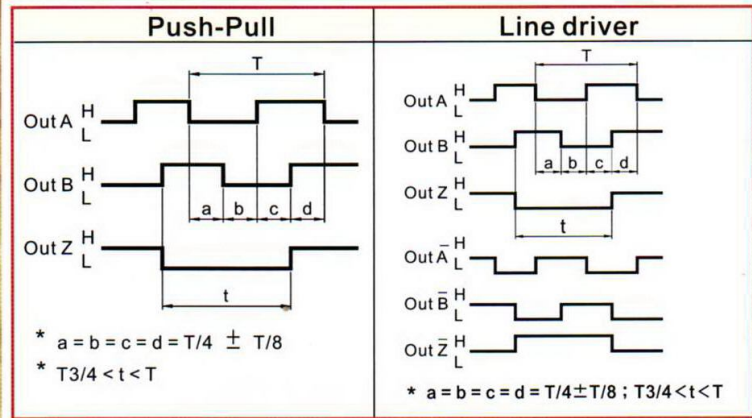
◆ Environment Data / 環境規格

Specification	規格	Data
Operating circumstance	工作環境	-25°C ~ +70°C ; 85%RH max.
Vibration resistance	抗振動	10 ~ 55 Hz / 1.5 mm ; 2 Hr/ X.Y.Z direction each
Shock resistance	抗沖擊	490m/s ² with 11ms in X.Y.Z direction 3times each
Protection class	保護等級	IP-64

◆ Output circuit / 輸出回路



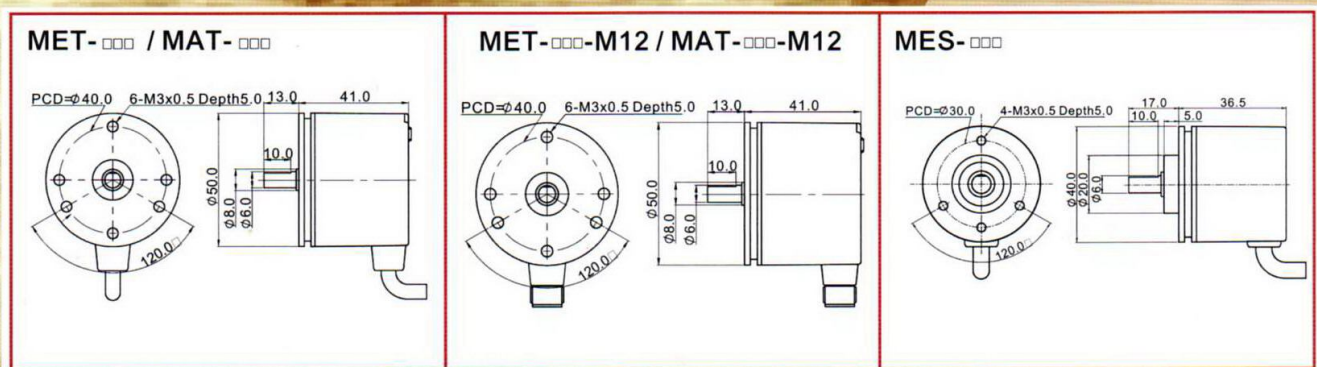
◆ Output timing chart / 輸出時序圖



◆ Coupling / 聯軸器

Model	型號	G2J-66	G2J-68	G2J-88
Diameter (d1)	軸徑	6.0mm	6.0mm	8.0mm
Diameter (d2)	軸徑	6.0mm	8.0mm	8.0mm
Outline diameter	外徑	18.0mm		
Outline length	長度	23.0mm		
Set screw	固定螺絲	M3 x 4		
Material	材質	Intensive Polyimide		

◆ Outline dimension / 外形圖



FOTEK CONTROLS CO., LTD.

Copy right © FOTEK CONTROLS CO., LTD.
2010/4/1

Specification may be modified without
notice in advance.

規格變更恕不事先通知

B-44