



# Parent Guide

Recreational - 2025-2026



## Mandatory Fees

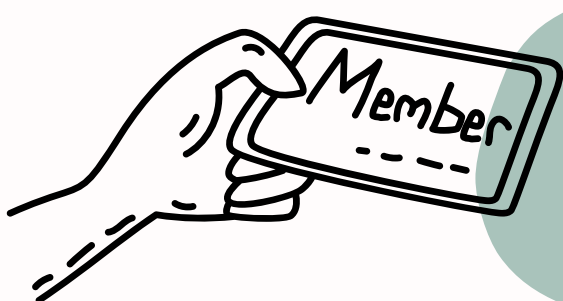
### CLASS FEES

Class fees must be paid upon registration. Otherwise, the registration will be canceled.



### AFFILIATION FEE

The affiliation fee is a mandatory annual fee, valid from September 1, 2025 to August 31, 2026. This fee is non-refundable.



### NON-RESIDENT FEE

The non-residence fee applies to all those who do not live in the city of Montreal. Example: Brossard, Ville Mont-Royal, Westmount, Côte-St-Luc, and others. A fee of \$ 25 is automatically added to the course fees.



### GADBOIS UNIFORM

Your child must have the Gadbois uniform\*. The uniform sold at the club office only.

**Girls:** Gadbois leotard \$55/65/70

**Boys:** Gadbois t-shirt \$ 15 and dark shorts of your choice.

\*Except for Baby gym and Gym ado classes

### LATE FEE

In the event that you are more than 15 minutes late to pick up your child after class, a **charge of \$ 1 / minute will apply from the 16th minute.**



### CREDIT CARD FEE

If you pay an invoice online, credit card fees will be charged and are **non-refundable**



If you do not have a credit card, please provide a contact number for communication in case of emergency.





# Parent Guide

Recreational - 2025-2026



## Important Information

### WAITING AREA

Parents may stay in the waiting area outside of the gym. **It is not possible to wait inside of the gym.**



### FUNDRAISING CAMPAIGN

As part of a fundraising campaign, a contribution of \$ 5 is included in the price of the course. **This contribution is non-refundable.**

### SESSION DISRUPTION

In the case of a class cancellation, the information will be sent by email. The information will also be shared through our social media platforms and website.



@gymgadbois



fb.com/gymgadbois

gymgadbois.com



### ABSENCES



#### NON-MOTIVATED ABSENCES

Missed lessons cannot be refunded or resumed.

#### MOTIVATED ABSENCES - medical note required

In the event of an injury, a refund for the remaining session amount, excluding the 10% cancellation fee, may be granted upon submission of a valid medical note to [info@gymgadbois.com](mailto:info@gymgadbois.com).

### SHOWS & DEMONSTRATIONS

An end-of-the-year show and/or an open class is planned at the end of the session. A detailed email will be sent to you towards the end of the semester.



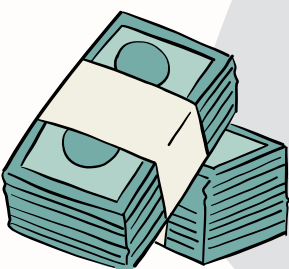
### REFUNDS

#### BEFORE THE START OF CLASSES:

You will be refunded for the full amount of the classes, including the membership fee. Online payment fees, non-resident fees, and donation fee are non-refundable.

#### AFTER THE START OF CLASSES:

You will be refunded for the remaining classes minus a 10% cancellation fee. All previously mentioned fees, as well as the membership card fee, will not be refunded.



### IMPORTANT DATES

The Spring session will run from  
**September 2 to December 21.**

**There will be no classes on October 13,  
November 21-22-23.**



# Parent Guide

Recreational - 2025-2026



## FAQ

### CAN I ENROLL MY CHILD IN A CLASS EVEN IF THEY HAVEN'T REACHED THE REQUIRED AGE YET?

**Under 6 years old:** The child must be of the required age by the first class of the session.

**7 years old and up:** The child must be of the required age during the session.

### HOW CAN I BOOK A BIRTHDAY PARTY AND/OR A PRIVATE CLASS?

All bookings for birthday parties/private classes are made online through your Activity Messenger account. On our website, you will find a document detailing the three available packages and their prices.

### HOW DO I ACCESS THE GYM?

The gym is accessible only through the entrance on Green Avenue of the Atwater Market. Additionally, the use of the elevator is not available to gym members.

### WHERE CAN I BUY THE UNIFORM?

You can purchase the uniform directly at the club, either during the uniform sale on August 24 or at your child's first class. Please note that we only accept payments by debit card or in cash.

### ARE CLASSES HELD IN ENGLISH OR IN FRENCH?

All our classes are bilingual and are offered in both French and English.

### CAN I ENROLL MY CHILD IN ADVANCED CLASSES AND/OR THE COMPETITIVE PROGRAM?

To enroll your child in an advanced or competitive class, you need to obtain a recommendation from a coach or pass an audition. If you are interested, please email [info@gymgadbois.com](mailto:info@gymgadbois.com) for further instructions.

### WHAT ARE THE DIFFERENT CLASS LEVELS, AND WHAT IS THE PROCESS FOR MY CHILD TO ADVANCE TO A HIGHER LEVEL?

In the recreational program, classes are divided by age rather than skill level. To advance, a participant must move to the next age group and/or receive a recommendation to join an advanced class.

