



W.H. SCOTT GROUP

***Lifting Solutions
& Components***

www.whscottlifting.com



Lifting Solutions

Electric Overhead Travelling Cranes



We can offer double girder and single girder electric overhead travelling cranes covering a range from 100kg through to 100t. A robust construction with a high level of standardisation makes our electric overhead travelling cranes very modular and adaptable to any need with highly reliable components and available for a wide range of applications. We can offer complete customisation with all cranes being designed in house by our team of experts.

Our wire rope hoists and crane components come with the latest motor and control technology. We can also provide structural supporting steel from our EN 1090 certified workshop. Our in-house design team can support you with structural steel work design, 3D modelling, FEA analysis and design calculations.

Jib Cranes



We offer a range of standard articulated and overbraced/underbraced jib cranes from 60kg to 10t with spans up to 8m, as well as bespoke jib cranes both designed and manufactured to your exact specifications.

Our range of jib cranes caters for indoor and outdoor use and are suitable for use with manual or electric hoists, with the option for manual or powered trolleys depending on what would suit your operation best.

In addition to standard jib cranes, we offer a range of articulated arm jib cranes for use with standard manual or electric hoists from our range.

www.whscottlifting.com

Portal & Semi-Portal Gantry Cranes



Portal cranes are heavy duty machines used to lift large and heavy objects. We can offer portal cranes with a cab built in for users to operate, or it can have a ground level control panel. They can also have jib cranes fitted to allow the crane to pick up objects from outside of its main working area. These cranes are highly efficient to work outdoors, achieving high speeds and capacities.

Semi-portal cranes are a very practical solution when it is not required to cover the entire width of the workshop. One side of the crane runs on the elevated runway, while the runway for the other side is on ground level.

Automotive Gantry Cranes



Built on wheels, the automotive gantry crane allows the movement of loads in all types of industries and applications with autonomy.

With a wide array of generator or diesel power gantries, from 20t to 440t, all cranes are robust, easy-to-use, easily maintained and handled, and extremely useful for sectors in the prefabricated industry and outdoor logistic warehouses (wind energy, prefabricated concrete, boilermaking, rubber tyres, gantry crane RTG, etc.).

Used or Refurbished Cranes



At WH Scott, we hold a large stock of all types of used cranes and provide a completely bespoke service, working with you to provide the best possible option for your requirements.

Although brand new equipment is appealing, it may not always be necessary, or within the project budget. Pre-owned lifting equipment might be your best bet when it comes to adding an extra workhorse to your fleet. This can provide an array of advantages and benefits to help fulfil your project needs while remaining within budget.

All refurbished cranes come complete with a used equipment warranty and our service package can include the supply, installation, testing and certification of your crane, so no stone is left unturned.

Open Winches



Called an open winch due to all the elements being manufactured with independent and different sub-assemblies for easy maintenance, it has several advantages:

- In general, open winches allow higher lifting capacities, higher speeds and higher FEM working groups
- Possibility of working with motors of 1500rpm, 1000rpm and 750rpm, bigger motor sizing.
- True vertical lift, with stable hook at the lifting time
- Easy access to components for easy maintenance
- External brake for easy access and maintenance

Crane Kits



Crane kits, supplied with both standardised and special components, allow for simple construction of electric overhead travelling cranes, plus gantry and suspended cranes. We can supply the girder project and all the components/ crane accessories, also including electrical equipment. Our system is modular and if you would like your steel contractor to fabricate the bridge, we can give you full fabrication drawings and design calculations as part of the supply of a complete crane kit.

Wire rope hoists can be supplied with a capacity from 1t to 100t with standard materials, and chain hoist from 100kg to 5000kg. Our expert team can design your crane kit with full customisation. Full specifications and drawings of all components can be provided at offer stage for approval.

Hoists



For use independently or with an electric overhead travelling crane, portal and semi-portal cranes, single and double girder, and other type of applications.

GH Hoists have been designed with reliability, security, durability, price and ease-of-maintenance in mind. Applications include:

- Low headroom single girder electric hoists
- Normal headroom single girder electric hoists
- Normal headroom single girder electric hoists ready for curves
- Compact double girder electric hoists
- Double girder electric hoists on end carriage
- Chain hoists
- Hoists for special applications
- Nested double girder electric hoists
- Hoists for tandem lifts

Design & Fabrication

When a demanding and challenging project requires structural steel fabrication for a lifting application, clients turn to our unmatched capabilities to meet their complex design-build requirements.

As a recognised industry leader in the fabrication, design, engineering, and erection of structural steel throughout the UK and Ireland, the core priority of our company is to successfully exceed client expectation by focusing innovation, knowledge and commitment on every commercial, industrial and public structure we assemble.

We have extensive knowledge of every aspect of steel fabrication and have completed the successful delivery of countless crane and lifting structures, up to 100 tonnes in weight. Our welding operatives are trained to coded specifications with considerable experience of NDT testing by dye pen, MPI, radiography and ultrasonic inspection.

As well as lifting solutions, we also have the ability to manufacture:

- Handrailing
- Barriers, gates and kicker plates
- Safety covers for sumps
- Open mesh and chequer plate flooring
- Access ladders
- Staircases
- Platforms
- Heavy structures
- Test weights

All of our steel fabrication work has CE marking approval up to EXC4, and our well-equipped and highly skilled fabricators can complete the following types of work to the highest standard:

- Primary structural steelwork
- Welded engineering assemblies
- Secondary metalwork
- Water processing structures
- Cranes, bridges, walkways, and support structures.

A number of our fabrication facilities throughout the UK and Ireland have the latest CNC cutting, milling and drilling machinery, and together with extensive welding facilities and a flexible workforce, we are able to work 24/7 to complete large fabrication contracts within demanding timescales when required.

Services available in-house include:

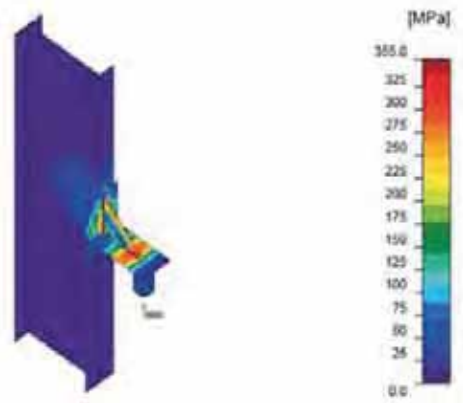
- Laser cutting
- Plasma cutting
- CNC cutting
- Milling
- Drilling
- Welding



Turnkey Steel Fabrication Projects

We can provide a full range of services to accompany our fabrication products, from supply only to turnkey project management, encompassing the complete project lifecycle.

This capability is illustrated by the projects we support, including supplying fabrications to the British Antarctic Survey (BAS), water industries, renewable power generation industries, nuclear, rail, processing, electrical, manufacturing, and materials handling sectors.



Design Calculations, FEA and Third-Party Verification

We can offer design and consultancy services for lifting structures and cranes. This includes full design calculations, finite element analysis and fatigue/stress analysis. This allows us to offer a single project manager for your entire project through the design and delivery cycle.

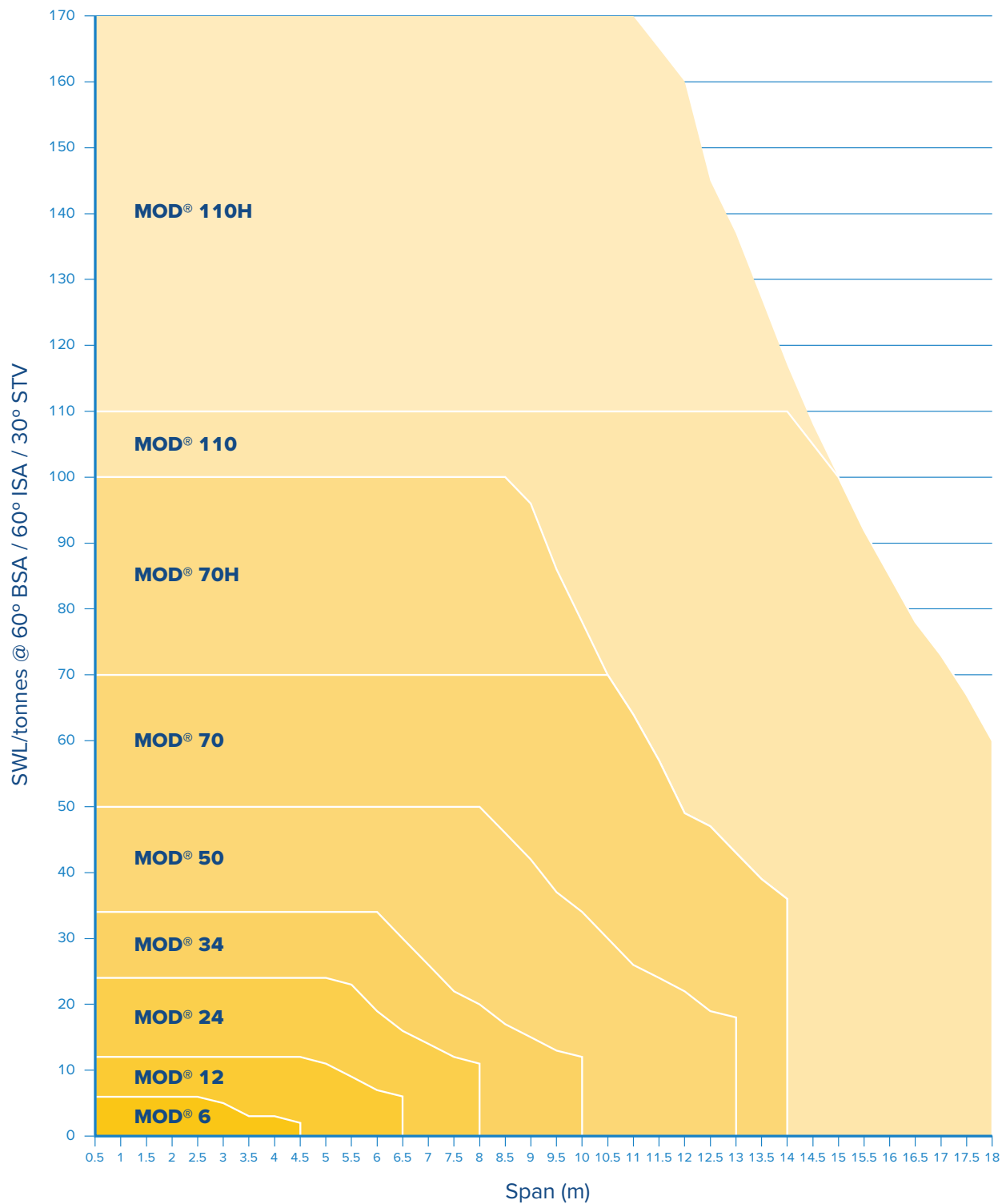
Standards, Safety and Traceability

Our CE marking demonstrates compliance with EU standards, ensuring we are well positioned to tackle structures of all types, whether for critical applications or standard, we can adapt our approach seamlessly to provide high quality fabrications to a rigorous specification.

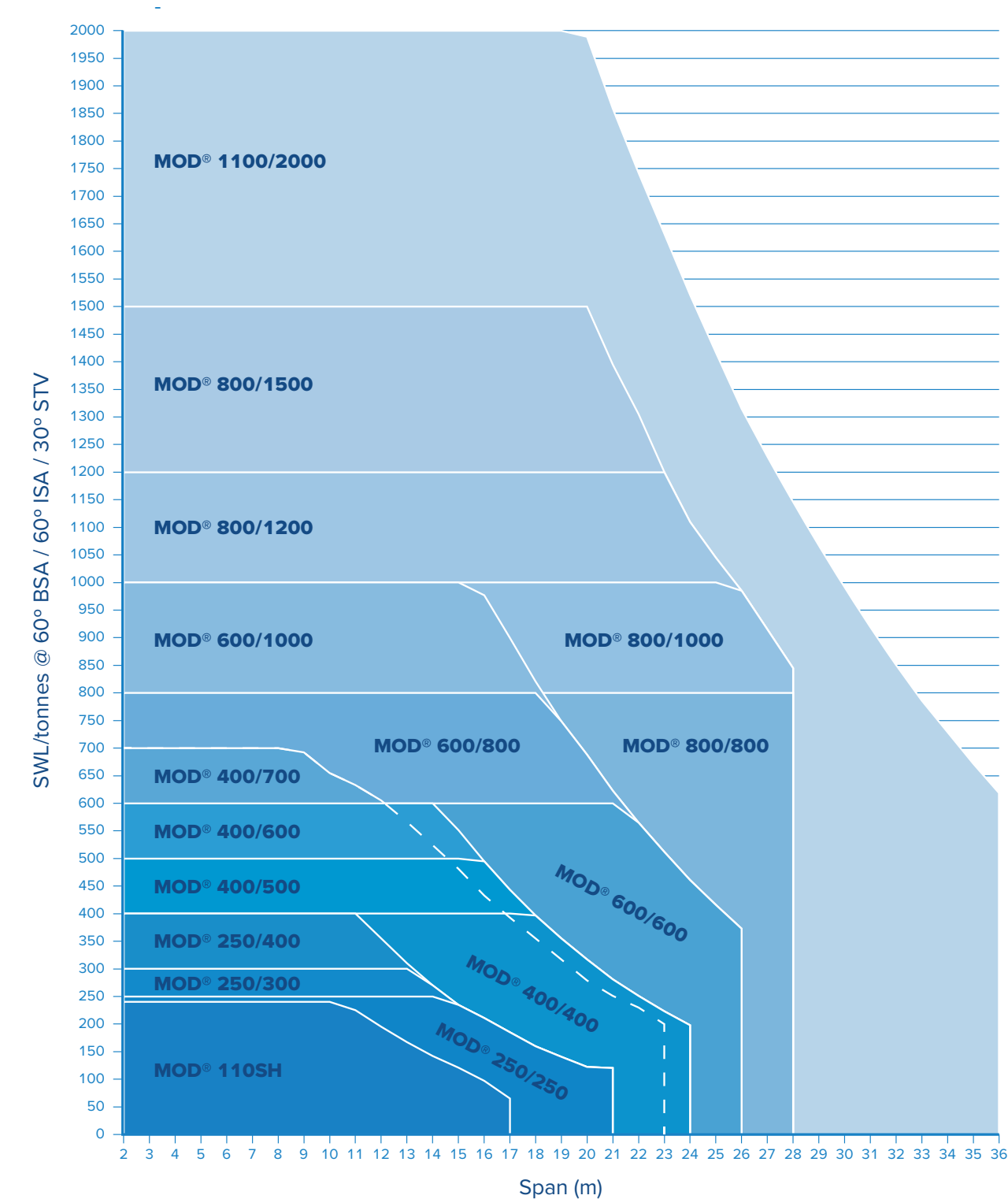
We provide full material and component traceability as standard with every fabrication, with the business tracking and tracing from initial sourcing through trusted suppliers, all the way through the various stages of production to the finished fabrication and final delivery to site. This provides all customers with a quality benchmark, and a proof of expertise regarding every fabricated product.

Spreader Beams

Load v Span Chart MOD® 6 to 110H



Load v Span Chart MOD® 110SH to 1100/2000



Each modular spreader beam series has been proof load tested in the compression test rig, and all products have been designed in accordance with the standards listed below:

UK & European Compliance

- BS EN 13155: 2003+A2:2009: Cranes – Safety – Non-fixed load lifting attachments
- DNV Standard for Certification No. 2.22 Lifting Appliances 2011 & DNVGL-ST-0378
- MOD 6 up to MOD 800/1500 Type Approved by DNV
- LOLER: 1998 (Lifting Operations and Lifting Equipment Regulations)
- PUWER: 1998 (Provision and Use of Work Equipment Regulations)
- EC Machinery Directive 2006/42/EC
- BS EN 1993-1: 2005: Eurocode 3

Load Monitoring Spreader Beam

The innovative load cell provides wireless real-time data by measuring the load at either end of the spreader beam, ideal for both weighing and dynamic load monitoring. Data is transmitted wirelessly to a USB transceiver that is then connected to a computer/tablet with a spare USB port.

The integrated load cell, which replaces the standard drop link component, offers significant time, cost and weight advantages. Existing valued customers can purchase the drop link separately and benefit from measurement technology that doesn't have to be sourced as an additional rigging tool. Another standout feature is that the height of rigging is significantly reduced, especially beneficial in low headroom applications. This is available in a range of capacities up to 100t.

System benefits:

- Reduce your rigging and the weight
- Simplified integrated load equalisation capability
- No more overloading shackles and slings
- Compatible with existing spreader beams
- Saving time and money on rigging



Product Number	Capacity te	Resolution te	Weight kg
AL12	6	0.001	3
AL24	12	0.002	6.1
AL34	17	0.005	8.3
AL50	25	0.005	10
AL70	35	0.005	14.4
AL70H	50	0.01	29

- Safety factor: 500%
- Battery type: 4 x AA
- Battery life: 1200 hours continuous
- Operating temp: -10 to 50°C
- Accuracy: +/- 0.3% of applied load
- Frequency: 2.4Ghz
- Range: 700m
- Protection: IP67
- Data rate: 3Hz - up to 200Hz can be ordered for dynamic load monitoring applications

Electric Chain Hoists & Power Trolleys

ATHLO Electric Chain Hoist

The SWF ATHLO chain hoist series is designed with a capacity of 125 kg to 2,500 kg. The ATHLO chain hoist combines high security, performance and usability with easy maintenance and a long service life. The modern design features a newly constructed interior and all-new mechanical components, resulting in a chain hoist that is easy to use and delivers top performance in extreme conditions.

The hoist fulfils the requirements of the following standards: Machine directive EC, ASME HST-1, ASME B30.16, and EN 14492/2.

- It is in conformity with the relevant provisions of the Machinery Directive 2006/42/EC and EMC Directive 2004/108/EC
- It has ASME duty rating up to H4 (ISO M4 – M6), depending on hoist type and hoisting speed¹
- It is external sound level tested
- It is RoHS compliant

¹ for 60 Hz motors.



Sound Pressure Level

For the size AA–AC electrical chain hoists, the maximum noise level (of the chain hoist) does not exceed 70 dB at 1 m (3.3 ft) height.

Product Options



Adapter plate for add-on options:

Fixing points at the bottom of the hoist, combined with a cable inlet, allows standard and special options to be easily added to the hoist.

Mounting plate available on request.

- The hoist motor with its new 4:1 ratio and redesigned cooling fins provides a better cooling in order to extend the service life of the hoist.
- All components are easily accessible, and no special tools are necessary to exchange components and install spare parts.
- The compact design and new upper-eye hook suspension produce an increased lifting height at the same suspension height.
- The new brake is designed to handle 1 million cycles or up to a lifetime of cycles with the proper handling.
- Low noise emissions, sensitive handling of the load with frequency inverter.

Chain Hoist Weights

Frame Size	Falls	Chain hoist weight [kg] ¹⁾	
		Chain hoist ^{2) 3)}	Chain [kg/m]
AA	1/1	24.2	0.38
AA	1/2	25.3	0.38
AB	1/1	33.9	0.62
AB	1/2	20.8	0.62
AC	1/1	61.6	1.20
AC	1/2	60.2	1.20

¹⁾ The weight values are valid for the standard configuration of the chain hoist.

²⁾ For the chain hoist frame sizes 02–10, the 1-fall hoist weight includes the counterweight.

³⁾ The weights are calculated for the standard lifting height (HOL) of 3 m (9.8 ft).



Load (kg)	Frame Size	Duty Group ISO	Motor Type	Lifting Speed [m/min]			
				50Hz		60Hz	
				HS	LS	HS	LS
63	AA	M6	MT06NB104	8	2	9.6	2.4
	AA	M6	MT06NB104	12	3	14.4	3.6
	AA	M6	MT06NB104	16	4	19.2	4.8
125	AA	M6	MT06NB100	6	-	7.2	-
	AA	M6	MT06NB104	8	2	9.6	2.4
	AA	M6	MT06NB104	12	3	14.4	3.6
160	AA	M5	MT06NB104	16	4	19.2	4.8
	AA	M6	MT06NB104	8	2	9.6	2.4
	AA	M6	MT06NB104	12	3	14.4	3.6
250	AB	M5	MT06NB104	16	4	19.2	4.8
	AA	M5	MT06NB100	6	-	7.2	-
	AA	M5	MT06NB104	8	2	9.6	2.4
320	AB	M4	MT08NB104	12	3	14.4	3.6
	AB	M6	MT08NB104	4	1	4.8	1.2
	AB	M6	MT08NB104	8	2	9.6	2.4
500	AB	M5	MT08NB104	16	4	19.2	4.8
	AB	M5	MT08NB104	4	1	9.6	2.4
	AA	M5	MT06NB104	4	-	4.8	1.2
630	AB	M5	MT08NB200	4	1	4.8	-
	AB	M5	MT08NB104	8	2	4.8	1.2
	AB	M5	MT08NB104	4	1	9.6	2.4
1000	AC	M6	MT10NA104	8	2	4.8	1.2
	AC	M6	MT10NA104	16	4	9.6	2.4
	AC	M5	MT10NA104	4	1	19.2	4.8
1250	AB	M5	MT08NB104	4	1	4.8	1.2
	AC	M4	MT10NA104	16	4	19.2	4.8
	AB	M5	MT08NB200	2	-	2.4	-
1600	AB	M5	MT08NB104	4	1	4.8	1.2
	AC	M5	MT10NB200	4	-	4.8	-
	AC	M5	MT10NA104	4	1	4.8	1.2
2000	AC	M5	MT10NA104	8	2	9.6	2.4
	AC	M4	MT10NA104	4	1	4.8	1.2
	AC	M4	MT10NA104	8	2	9.6	2.4
2500	AC	M5	MT10NA104	4	1	4.8	1.2
	AC	M5	MT10NB200	2	-	2.4	-
	AC	M5	MT10NA104	4	1	4.8	1.2

Portable Mini Electric Chain Hoist

Ideal for light industrial use, the Duke 500kg electric chain hoist has a duty cycle of 30%. The frame and control enclosure provide protection against dust and water ingress, although a weather protection jacket is also available for extra protection.

- 110 volt 50Hz single phase hoist
- 500kg WLL
- Available with lift height 3m - 30m Speed: 5 metres per minute
- Closed headroom = when the hook is fully up 480mm
- Heavy duty design and build
- Duty cycle 30% (20 minutes maximum continued operation in a 1 hour period)
- Rating IP54
- Power supply cable length 5m



Product Number	Capacity kg	L mm	W mm	H mm	Phase	Lift m	Chain Falls	Speed m/min		Motor kw	Load Chain mm	NW kg	GW kg
								50Hz	60Hz				
DU825-110V	250	420	160	480	1	3	1	10	12	1.3	6.3	16	20
DU825-240V	250	420	160	480	1	3	1	10	12	1.3	6.3	16	20
DU901-110V	500	420	160	480	1	3	1	5	6	1.3	6.3	19	23
DU901-240V	500	420	160	480	1	3	1	5	6	1.3	6.3	19	23
DU902-110V	1000	420	160	480	1	3	2	2.5	3	1.3	6.3	23	27
DU902-240V	1000	420	160	480	1	3	2	2.5	3	1.3	6.3	23	27

Portable Gantries

Porta Gantry

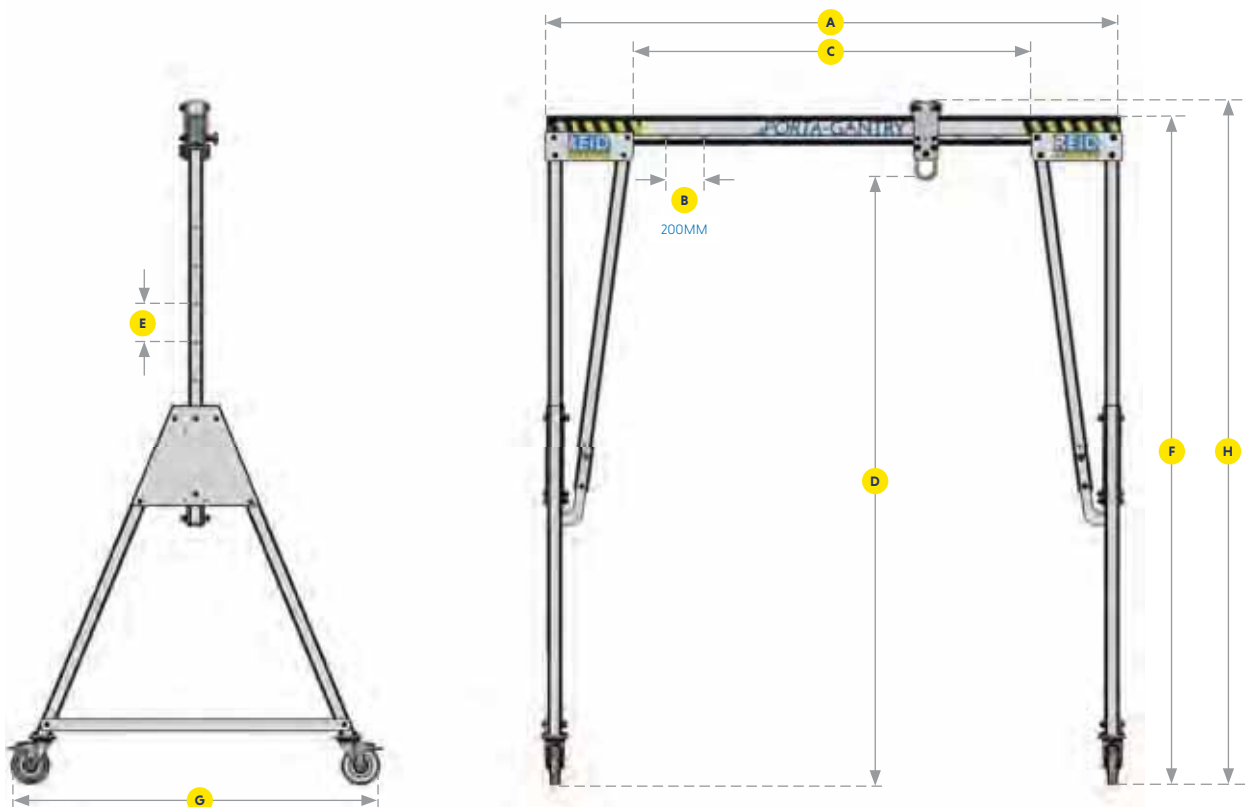
Unique portable gantry system that can safely lift up to 5000kg, with manual assembly on just 4 bolts.

Innovative, lightweight, portable, safe and very strong, the Porta Gantry lifting system is the number one choice for organisations seeking safe, multiple location lifting solutions and a healthy return on investment. Its unique capabilities have proven to satisfy finance, operations, health & safety as well as users.

- WLL from 500kg up to 5000kg (depending on model)
- Maximum combined personnel lifting capacity up to 2000kg (depending on model)
- 3-5 person fall arrest (500 & 1000 - 3 persons, 2000, 3000 & 5000 - 5 persons). In conformity with PD CEN/TS16415:2013
- EN 795:2012 certified - as part of an EN 363 compliant system and in conformity with ANSI Z359.18-17 and AS/NZS 5532:2013
- Conforms to IRATA International Code of Practice for industrial rope access
- All models are suitable for use in ATEX Zone 2 explosive atmospheres. ATEX Zone 1 is available as an upgrade
- Lightweight and portable, with easy on-site assembly within manual handling guidelines:
 - 4 portable parts assembled on just 4 bolts
 - Simple 'scissoring' assembly in just 2-5 minutes
- Variety of standard configurations available, plus customisation for specific requirements and interchangeable components (subject to WLL rating)



- Ergonomic
 - 360° swivel-locking castors as standard
 - Simple, manual height and span adjustment
 - Ultra-safe captive trolley
 - Ergonomic design of profiles, handles, etc.
- Bolted structure, lateral beam and leg bracing features
- Optional extras:
 - Universal wind-up jack legs
 - Lobed cheek-plates (inboard scissoring)
 - Jointed beams
 - Gates trolley (available on most options)
 - Rope controlled trolley



WLL kg	Frame Size mm	D max	E	D min	F	H max	H min	G	A-Frame Weight kg approx.	Trolley Roller Size mm	Castor Diam. mm
		Max. Height To Lifting Eye mm	Height Increment mm	Min. Height To Lifting Eye mm	Max. Height To Top Of Beam mm	Max. Height To Top Of Roller mm	Min. Height To Top Of Roller mm	Width mm			
500/1000	S	2355	5 x 150	1605	2675	2757	2007	1212	29	82	150
500/1000	M	2851	5 x 150	2101	3171	3253	2503	1429	37	82	150
500/1000	I	3188	5 x 200	2188	3499	3581	2581	1726	45	82	200
500/1000	T	4079	6 x 200	2879	4399	4481	3281	2011	50	82	200
500/1000	TC4	4527	6 x 200	3327	4847	5930	3730	2234	77	82	200
500/1000	TC3	5027	6 x 200	3827	5347	5430	4230	2557	82	82	200
500/1000	TC2	5527	8 x 200	3927	5848	5930	4330	2733	87	82	200
500/1000	TC1	5829	9 x 200	4029	6149	6231	4431	2733	90	82	200
2000	S	2355	5 x 150	1605	2675	2757	2007	1212	32	82	150
2000	M	2851	5 x 150	2101	3171	3253	2503	1429	37	82	150
2000	I	3188	5 x 200	2188	3499	3581	2581	1726	45	82	200
2000	T	4079	6 x 200	2879	4399	4481	3281	2011	50	82	200
2000	TC4	4527	6 x 200	3327	4847	4930	3730	2234	77	82	200
2000	TC3	5027	6 x 200	3827	5347	5430	4230	2557	82	82	200
2000	TC2	5527	8 x 200	3927	5848	5930	4330	2733	87	82	200
2000	TC1	5829	9 x 200	4029	6149	6231	4431	2733	90	82	200
3000	S	2410	5 x 150	1660	2730	2812	2062	1212	48	82	200
3000	M	2906	5 x 150	2156	3226	3308	2558	1429	53	82	200
3000	I	3188	5 x 200	2188	3499	3581	2581	1726	66	82	200
3000	T	4079	6 x 200	2879	4399	4481	3281	2011	72	82	200
3000	TC4	4527	6 x 200	3327	4847	4930	3730	2234	77	82	200
3000	TC3	5027	6 x 200	3827	5347	5430	4230	2557	82	82	200
3000	TC2	5527	8 x 200	3927	5849	5930	4330	2733	87	82	200
5000	I	3181	5 x 200	2191	3592	3717	2717	1736	88	125	200
5000	T	4049	6 x 200	2849	4487	4612	3412	2021	99	125	200
5000	TC4	4500	6 x 200	3300	4938	5062	3862	2234	90	125	200
5000	TC3	5000	6 x 200	3800	5438	5562	4362	2557	95	125	200

S & M versions also available as custom systems

WLL 5000kg dimension systems are shown using the deeper 'D' section beam

Dimensions use standard Master Link Trolley, other options available to increase resulting height of lift (HOL) and to assist with load movement.

**Weight includes stabiliser legs*

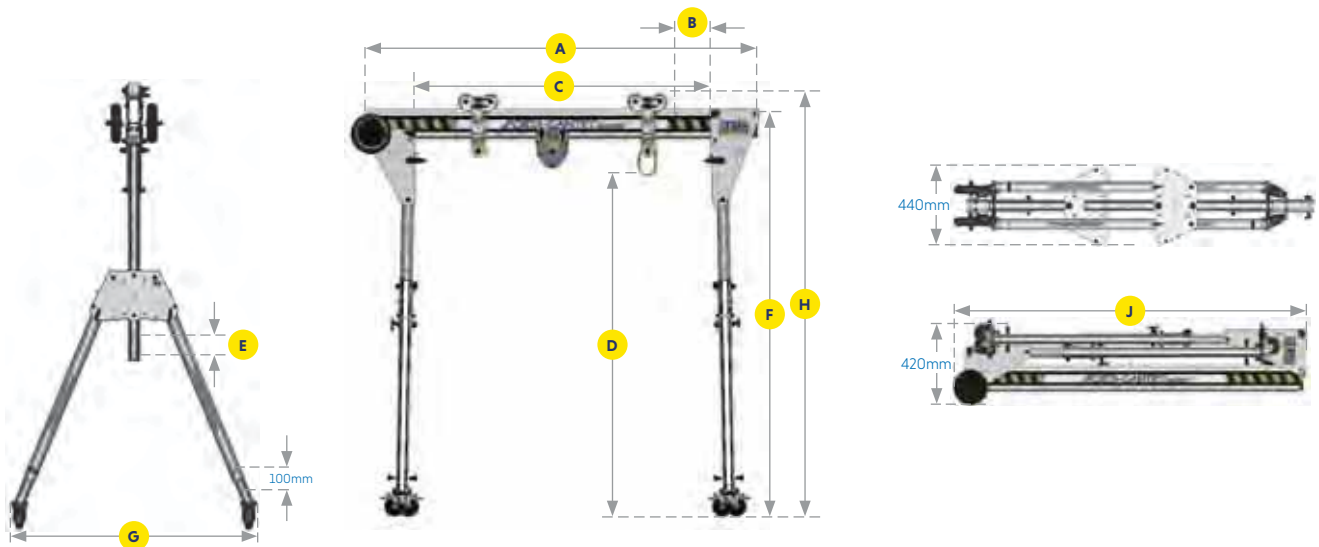
Key:

- S: Small
- M: Medium
- I: Intermediate
- T: Tall

Porta Gantry Rapide

A unique, ultra-light and rapidly deployable gantry that provides a versatile lifting solution for goods and personnel. The Porta Gantry Rapide is a patented gantry that can be assembled in under 60 seconds for both goods and personnel lifting (man-ride) applications.

- WLL up to 1000kg
- Personnel WLL up to 500kg positioning depending on model, 150kg fall arrest
- Height adjustment range 500 to 900mm (see table)
- Three person fall arrest In conformity with PD CEN/ TS16415:2013
One person fall arrest EN 795:2012 certified - as part of an EN 363 compliant system and in conformity with ANSI Z359.18-17* and AS/NZS 5532:2013
- Rope access conforms to IRATA International Code of Practice for industrial rope access
- All models are suitable for use in ATEX Zone 2 explosive atmospheres. ATEX Zone 1 is available as an upgrade PGR 500 only
- Lightweight and portable. Within manual handling guidelines, weighing from only 33kg for PGR500 and 42kg for PGR1000
- Range of beam lengths up to 4m and configurations available
- Rapid deployment of gated trolley - mounted in seconds
- Height adjustable legs - 2 x 50mm adjustment/on each leg with castors or levelling foot options
- Sheave carrier and trolley lock off holes across the full length of the beam



Product Number	Dimensions mm													WLL			Unit Weight kg
	A Beam Length	B	C Min.	C Max.	D Min.	D Max.	E	F Min.	F Max.	G	H Min.	H Max.	J	Goods Capacity kg	Fall Arrest Capacity* No. of Persons	Personnel Positioning* kg	
PGRS20	2000	2 x 200	1100	1500									2080	500	3	250	37
PGRS23	2300	3 x 200	1200	1800	1445	2045	6 x 100	1776	2376	1158	1856	2456	2380	400	2	200	38
PGRS40	4000	3 x 200	2900	3500									4080	250	1	125	43
PGRM20	2000	2 x 200	1100	1500									2080	400	2	200	38
PGRM23	2300	3 x 200	1200	1800	1449	2149	7 x 100	1780	2480	1215	1860	2560	2380	400	2	200	38
PGRM40	4000	3 x 200	2900	3500									4080	250	1	125	44
PGRT20	2000	2 x 200	1100	1500									2645	250	1	125	42
PGRT23	2300	3 x 200	1200	1800	1923	2923	10 x 100	2254	3254	1586	2334	3334	2380	250	1	125	43
PGRT40	4000	3 x 200	2700	3500									4080	250	1	125	48
PGR1TS20	2000	2 x 200	1102	1502									2077	1000	3	500	52
PGR1TS30	3000	3 x 200	1902	2502	1496	1996	5 x 100	1822	1822	1270	1904	2404	3077	1000	3	500	57
PGR1TS40	4000	3 x 200	2902	3502									4077	1000	3	500	61
PGR1TM20	2000	2 x 200	1102	1502									2200	1000	3	500	56
PGR1TM30	3000	3 x 200	1902	2502	1735	2435	7 x 100	2061	2061	1484	2143	2843	3077	1000	3	500	60
PGR1TM40	4000	3 x 200	2902	3502									4077	1000	3	500	65
PGR1TT20	2000	2 x 200	1102	1065									2830	1000	3	500	60
PGR1TT30	3000	3 x 200	1902	2065	1975	2875	9 x 100	2301	3201	1689	2383	3283	3077	1000	3	500	64
PGR1TT40	4000	3 x 200	2902	3065									4077	1000	3	500	69

*Ratings using European standards.

Easylift System

The Easylift system is a 500kg WLL portable lightweight aluminium gantry complete with two trolleys, each dual-rated for load and man-riding as well as two fall arrest anchor points. Designed to lift a pump from a sump in a safe manner and allow the operative to simply slide it to one side for safe inspection, the beam is positioned upon a two leg and a three leg arrangement.

Each leg is telescopically adjustable in 50mm increments, to a maximum height of 2160mm. The footprint of the 3 legged section is 1300mm square at minimum leg extension and 1700mm square at maximum leg extension.

Rated to 500kg WLL for load lifting, the Easylift system is also suitable for two person fall arrest. Alternatively, the system is suitable for single person man-ride/work positioning.



Product Type	WLL kg	Max. Foot Print mm	Min. Beam Height mm	Max. Beam Height mm	No. of Persons Fall Arrest
Beam Length 1600mm	500	1830(W) x 2845(L)	1475	2160	2
Beam Length 2200mm	500	1830(W) x 3445(L)	1475	2160	1
Beam Length 2700mm	500	1830(W) x 3945(L)	1475	2160	1
Beam Length 2900mm	200	1830(W) x 4145(L)	1475	2160	0
Tripod Only	500	1700 x 1700	1475	2160	1

Jibs & Davits

Porta-Davit Quantum

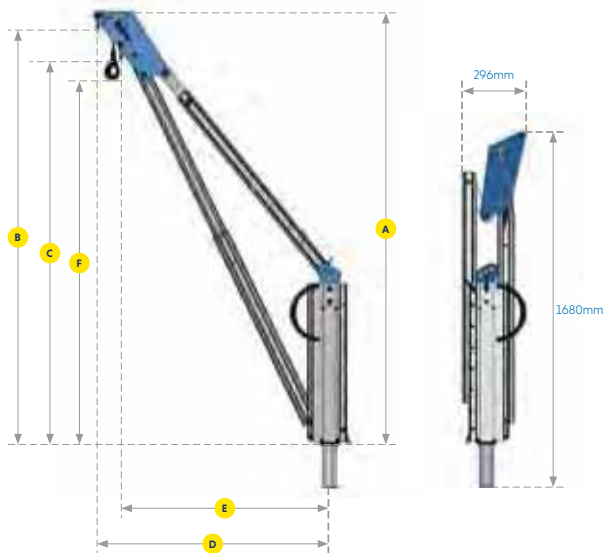
Strong yet ultra-light system with integrated carry handle, capable of lifting up to 600kg. With a weight of just 18.5kg, the Porta-Davit Quantum is easily transported using the integrated carry-handle, making it suitable for a wide range of applications.

- Porta Davit Quantum 1 - WLL 600kg up to 1200mm radius.
Porta Davit Quantum 2 - WLL 500kg up to 1500mm radius.
- Personnel WLL up to 300kg PDQ1, 250kg PDQ2 positioning at all configurations and 150kg fall arrest.
- Fall arrest EN 795:2012* certified - as part of an EN 363 compliant system. In conformity with AS/NZS 5532:2013*.
- Conforms to IRATA International Code of Practice for industrial rope access*.
- ATEX All models suitable for use in ATEX Zone 2 explosive atmospheres. ATEX Zone 1 is available as an upgrade.
- Manual handling compliant - fully assembled weight from just 18.5kg. Integrated carry handle and bagged for easy transportation and storage.
- No tools needed, assembles on just 1 pin (2 for winched).



- Radius adjustment: 900mm-1200mm or 1200mm-1500mm as standard.
- 360° rotation under full load with fingertip control
** Applies to PDQ1 types only.*
- Clean anodised finish to increase corrosion resistance and clean room applications.
- Mates with all 65mm Reid sockets (or sleeves for existing sockets) Also suitable for use with socket extensions.

Winched [W]



Strop [S]



Three radius adjustment points for 100mm radius adjustment increments

Product Number	WLL kg	Radius Adjustment Points	Dimensions mm				
			A	B	C	D	E
PDQ1	600	1	2007	1935	1799	1200	1100
PDQ1	600	2	2061	1989	1848	1100	1000
PDQ1	600	3	2111	2039	1892	1000	900
PDQ2	500	1	1837	1766	1647	1500	1400
PDQ2	500	2	1899	1827	1703	1400	1300
PDQ2	500	3	1957	1885	1755	1300	1200

Porta Davit 500

With a safe lifting capacity of up to 500kg, made of lightweight aluminium and weighing just 24kg (fully assembled), the Porta Davit system is literally a one person 'pick up and go' lifting solution. Manufactured using Reid Lifting's innovative design, the Porta Davit bagged system can be easily transported by hand to any site that a single person can access.

The Porta Davit is available in several variations, including standard strop and winched versions, extended radius (e.g. WLL 350kg at 1500mm radius) and complete with a portable socket base (the Porta Base), removing the need for a fixed socket installation.

- Goods WLL up to 500kg.
- Personnel WLL up to 250kg positioning, max. 150kg fall arrest.
- EN 795:2012 certified - as part of an EN 363 compliant system.
- ATEX All models suitable for use in ATEX Zone 2 explosive atmospheres. ATEX Zone 1 is available as an upgrade.
- Standard unit just 24kg fully assembled. Simple assembly within manual handling guidelines, 2 piece design with no tools needed. Easy to store and transport in heavy duty bag.
- Radius adjustment 800-1200mm* as standard.
- 360° rotation under full load with fingertip control.
- Corrosion resistant - clean, powder-coated finish.
- Mates with all 65mm REID sockets (or sleeves for existing sockets) - includes Reid's unique portable socket, the Porta Base. Also suitable for use with socket extensions.



Man-rated options

The Porta Davit is available in three forms rated for different personnel applications:

Fall Protection

Standard strop davit with a fall arrest unit fitted to a shackle.

Lower & Raise

Winched davit with a man rated winch to lower and raise personnel and separate fall arrest unit with or without integral retrieval winch.

Ladder or Climbing

Winched davit with a fall arrest unit with integral retrieval winch where personnel moves on a ladder or climbing.

The Porta Davit system (using Reid mounting sockets) is approved to EN 795:2012, as part of an EN 363 compliant system. It is recommended that the Porta Davit unit has a dedicated man-ride rating only and is set at the minimum possible operating radius; however, it is possible to have the davit dual rated at 120kg for man ride and 500kg goods lifting.

When used for man-ride applications the Porta Davit unit must be dedicated to the man-ride application only and there should be no goods load attached to the davit. Suitably rated chain blocks, winches and man-ride options and accessories are all available from WH Scott.

Sockets & extensions



The Porta Davit 500 has been designed to fit all existing and new Reid Lifting sockets and socket extensions.

Porta-Base

A truly innovative extension to the REID socket family to further support the flexible use of the Porta Davit 500 range. The most convenient socket without any need for a fixed socket installation.

- Goods WLL up to 500kg at a max. 1000mm radius.
- Personnel WLL up to 120kg.
- Packed in heavy duty protective bags for easy transportation and storage.
- Adjustable feet for uneven surfaces with spirit level fitted to each leg.
- For use with 65mm socket diameter.
- Suitable for clean environments.

Porta Base is currently not suitable for use with socket extensions, Porta Davit Quantums or T-Davits.



Porta-Davit 1000

The Porta Davit 1000 further extends the Porta Davit family of jib cranes with up to WLL 1000kg lifting capability for goods, bringing additional safety margins for situations where safety is paramount, such as wastewater treatment applications.

- Goods WLL up to 1000kg at 900-1200mm radius.
- Personnel WLL up to 300kg positioning at all configurations, 150kg max fall arrest.
- Two person fall arrest in conformity with PD CEN/TS16415:2013.
- One person fall arrest EN 795:2012 certified - as part of an EN 363 compliant system. In conformity with AS/NZS 5532:2013 and ANSI Z359.18-17.
- Conforms to IRATA International Code of Practice for industrial rope access.
- Height of lift: 2000mm to shackles on standard unit.
- Unique profiles maximising strength vs. weight.
- Stored in a heavy duty bag for easy transportation - combined weight of only 39kg.
- Single person assembly - no tools required.
- Bearing system allows easy rotation - Rotation bar supplied as an option.

Custom versions to meet specific requirements can be quoted upon request.

NB: 95mm sockets are required for this product.



Sockets & Extensions

The Porta Davit 1000 structure needs to be anchored to a surface/foundation capable of withstanding the applicable loading. The davit can be supplied with one of the mounts specified below (only mounts supplied by Reid Lifting are approved to be used with the Porta Davit 1000):

Flush Mount (65 & 95mm):

- Complete with cover and re-bars, for casting into concrete.
- Complete with cover for resin bonding into existing concrete.



Top Mount (65 & 95mm)

- Suitable for bolting into existing concrete or steel structures, complete with cover – for simplicity or to provide additional davit height and reach.



Side Mount (65 & 95mm)

- Suitable for mounting on the side of concrete or steel structures. A brace plate can be supplied for thin-walled concrete.



T-Davit Winched & Shackled

An extensive range of davits offering up to WLL 500kg with 360° rotation under finger tip control for those difficult locations, giving a wide range of standard height and radius options and available customisation.

Particularly suited to situations with physical constraints (headroom, handrails, pipework etc.) with a wide range of configurations available. Designed to comply with manual handling regulations and to avoid assembling the davit at height.

NB: **Winched** provides winch and shackle lifting
Shackled provides shackle lifting only

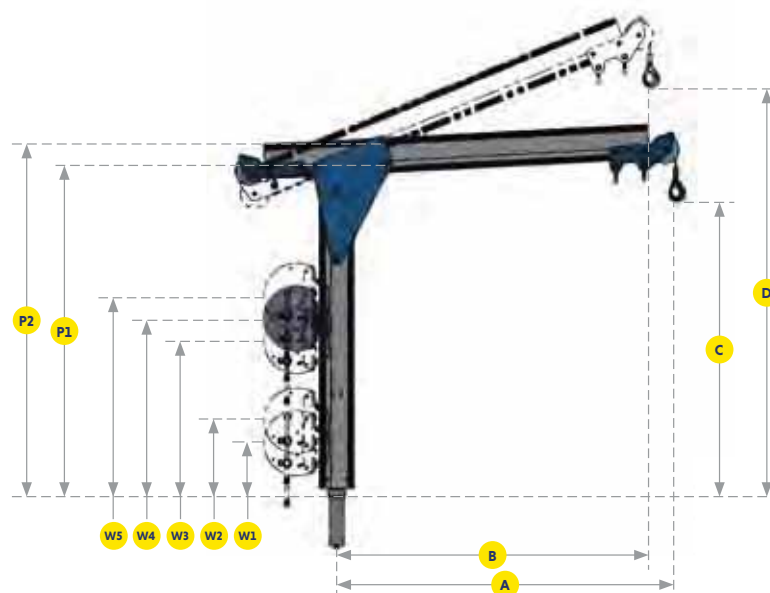
- WLL up to 500kg
- Personnel WLL configurations available up to 250kg positioning, 150kg fall arrest*
- 1 person fall arrest EN 795:2012* certified - as part of an EN 363 compliant system. In conformity with AS/NZS 5532:2013* and ANSI Z359.18-17**
- Conforms to IRATA International Code of Practice for industrial rope access*
- ATEX All models suitable for use in ATEX Zone 2 explosive atmospheres. ATEX Zone 1 is available as an upgrade
- Lightweight and portable
- Manual handling compliant
- Reduced maintenance costs
- Bagged for easy transportation and storage
- Assembly and operation by 1 person, no tools required - just 2 main components

* Applies to radius up to 1600mm

** Applies to radius up to 1000mm



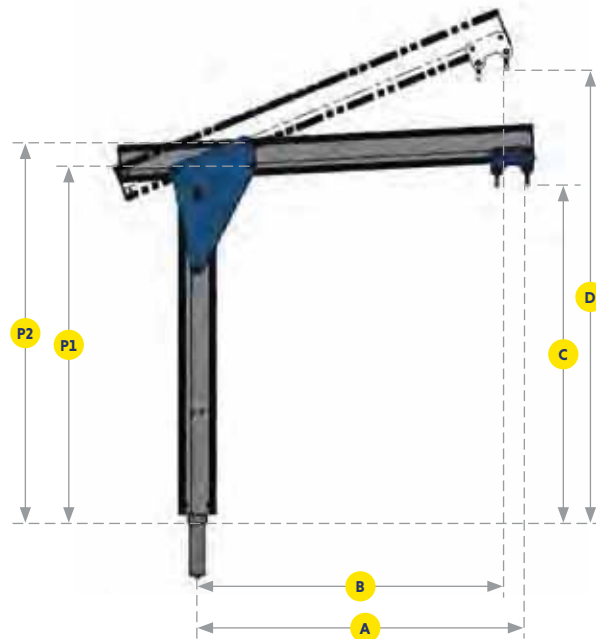
- Operational radius up to 3000mm - subject to WLL reduction (1600mm maximum for EN 795)
- 360° rotation under full load with fingertip control
- Clean anodised finish to increase wear resistance
- Mates with all 65mm Reid sockets (or sleeves for existing sockets)
- Also suitable for use with socket extensions
- Specifications:
 - 2 lifting positions as standard (A&B) - (see table on next page)
 - Twin shackles for index lifting and/or attachments for winching



Beam Options	Position	Radius mm	Load Rating 1 kg	Load Rating 2 kg
1	A	1000	500	500
	B	925		
2	A	1200	400	500
	B	1110		
3	A	1600	300	375
	B	1478		
4	A	2000	250	300
	B	1850		

Column Options	Height of Lift (HoL) mm								Weight kg	Winch Position		P1	P2
	A	B	A	B	A	B	A	B					
1	839	1151	839	1227	839	1380	839	1532	20	W1	190	982	1081
										W2	320		
2	1019	1331	1019	1407	1019	1560	1019	1712	21	W1	190	1162	1261
										W2	320		
										W3	625		
										W1	190		
3	1329	1641	1329	1717	1329	1870	1329	2022	23	W2	320	1472	1571
										W3	625		
										W4	755		
										W5	885		
4	1644	1956	1644	2032	1644	2185	1644	2337	25	W3	625	1787	1886
										W4	755		
										W5	885		
5	1954	2266	1954	2342	1954	2495	1954	2647	28	W5	885	2097	2196

T-Davit Shackled



Beam Options	Position	Radius mm	Load Rating 1 kg	Load Rating 2 kg
1	A	850	500	500
	B	775		
2	A	1050	400	500
	B	960		
3	A	1450	300	375
	B	1328		
4	A	1850	250	300
	B	1700		

Column Options	Height of Lift (HoL) mm								P1	P2
	A	B	A	B	A	B	A	B		
1	912	1224	912	1300	912	1453	912	1605	982	1081
2	1092	1404	1092	1480	1092	1633	1092	1785	1162	1261
3	1402	1714	1402	1790	1402	1943	1402	2095	1472	1571
4	1717	2029	1717	2105	1717	2258	1717	2410	1787	1886
5	2027	2339	2027	2415	2027	2568	2027	2720	2097	2196

Galvanised Lean Over Davit

The steel galvanised lean over davit is a three-piece design with a range of socket pin diameters, manufactured from mild steel and galvanised to BS EN 1461. This versatile, portable piece of equipment is available in a variety of specifications.

- Designed as a transportable device, the steel lean-over davit is often used in locations where it can be stored on site.
- Fitted with a castellated offset suspension point, allowing the chain block to be adjusted from the central point of lift.
- Alternative socket pin diameters can be manufactured as required to suit specific requirements.
- Subject to customer requirements, these davits can also be supplied in either stainless steel 304 or stainless steel 316.



Davit Type	WLL kg	Reach mm	Height To Suspension Point mm	Rotation degree	Pin Diameter mm	Optional Pin Diameter mm
Steel Lean Over	500	760	1960	360	65	63.5
Steel Lean Over	500	1000	1960	360	65	63.5
Steel Lean Over	500	1200	1960	360	65	63.5
Steel Lean Over	1000	1070	2010	360	75	-
Steel Lean Over Winch	500	760	1900	360	65	63.5
Steel Lean Over Winch	500	1000	1900	360	65	63.5
Steel Lean Over Winch	500	1200	1900	360	65	63.5
Steel Lean Over Winch	1000	1070	2250	360	75	-

Uni-Lift Aluminium Davit

A two piece design supplied with industry standard 65mm universal davit pin and manufactured in lightweight aluminium, the Uni-Lift 500 davit can be easily transported and erected by a single person. It has no heavy parts or awkward bolts; the two locking and adjustment points on the Uni-Lift 500 contain a sleeved hole for ease of use, allowing the fold-down locking pin to slide in easily.

Features

- A smooth 360 degree rotation, even under maximum load.
- Adjustable height/reach settings.
- Aluminium construction with a yellow powder coat finish. Each piece weighs less than 25kg.
- Designed to be used in close proximity to hand-railing without any need for adaptation or extension pieces.



Davit Type	WLL kg	Reach mm	Height To Suspension Point mm	Rotation degree	Pin Diameter mm	Optional Pin Diameter mm
Uni-Lift Aluminium Adjustable Height & Reach	500	760	2483	360	65	63.5
Uni-Lift Aluminium Adjustable Height & Reach	500	1000	2327	360	65	63.5
Uni-Lift Aluminium Adjustable Height & Reach	500	1200	2134	360	65	63.5
Uni-Lift Aluminium Adjustable Height & Reach Winch	500	760	2483	360	65	63.5
Uni-Lift Aluminium Adjustable Height & Reach Winch	500	1000	2327	360	65	63.5
Uni-Lift Aluminium Adjustable Height & Reach Winch	500	1200	2134	360	65	63.5

Split Pole Steel Davit

The portable split pole davit is a three piece assembly manufactured from mild steel and galvanised to BS EN 1461.

This davit is available with a split of either 70/30 or 50/50 and in a range of reaches to suit individual customer requirements. Subject to customer requirements, this davit can also be supplied in stainless steel 304, stainless steel 316 or as a lightweight aluminium model.



Davit Type	WLL kg	Reach mm	Height To Suspension Point mm	Rotation degree	Pin Diameter mm	Optional Pin Diameter mm
Vertical Split Pole	500	760	2200	270	65	63.5
Vertical Split Pole	500	1000	2200	270	65	63.5
Vertical Split Pole	500	1200	2200	270	65	63.5
Vertical Split Pole Winch	500	760	1930	270	65	63.5
Vertical Split Pole Winch	500	1000	1930	270	65	63.5

Height Safety Davit

The Uni-Lift 500 lightweight aluminium portable fall arrest/height safety davit has a 136kg WLL for single person fall arrest applications. Designed as a two piece assembly, the Uni-Lift 500 is supplied with an industry standard 65mm diameter universal davit mounting pin to suit our standard sockets. The assembly can also be supplied with non-standard mounting pins to suit customer requirements.

Features

- A smooth 360 degree rotation, even under maximum load.
- Adjustable height/reach settings ranging from 760mm to 1200mm reach and a maximum height of lift of 2483mm.
- Aluminium construction with a yellow powder coat finish. Each piece weighs less than 25kg.
- Easy access winch mounting plate.

The Uni-Lift 500 has been designed to be used in close proximity to hand-railing, without any need for adaption or extension pieces.

The Uni-Lift 500 davit can be easily transported and erected by a single person with no heavy parts or awkward bolts. The two locking and adjustment points on the Uni-Lift 500 contain a sleeved hole for ease of use, allowing the fold-down locking pin to slide in easily.

The Uni-Lift 500 body can be supplied with interchangeable arms to accommodate:

- Goods lifting via manual chain block or electric hoist, 500kg WLL
- Goods lifting with a winch, electric or manual, 500kg WLL
- Fall arrest/rescue of a single person, 136kg WLL



Davit Sockets

Surface Mount Davit Sockets

Socket Type	WLL kg	Base Dimensions mm	To Fit 63.5mm Diameter Pin	To Fit 65mm Diameter Pin	To Fit 75mm Diameter Pin	No. Of Fixing Holes	Fixing Size	Finish
Surface Mount	500	400 x 400	Yes	Yes	No	4	63.5	Galvanised
Surface Mount	500	250 x 250	Yes	Yes	No	4	63.5	Galvanised
Surface Mount	1000	500 x 500	No	No	Yes	8	63.5	Galvanised



Cast In/Grout In Davit Sockets

Socket Type	WLL kg	Flange Diameter mm	Total Depth Required mm	To Fit 63.5mm Diameter Pin	To Fit 65mm Diameter Pin	To Fit 75mm Diameter Pin	Finish
Cast In	500	200	350	Yes	Yes	No	Galvanised
Cast In	1000	200	350	No	No	Yes	Galvanised
Grout In	500	200	350	Yes	Yes	No	Galvanised
Grout In	1000	200	350	No	No	Yes	Galvanised
Surface Mount	1000	500 x 500	No	No	Yes	8	



Wall Mount Davit Sockets

Socket Type	WLL kg	Back Plate Dimensions mm	To Fit 63.5mm Diameter Pin	To Fit 65mm Diameter Pin	To Fit 75mm Diameter Pin	No. Of Fixing Holes	Fixing Size	Finish
Wall Mount	500	450(H) x 400(W)	Yes	Yes	No	7	M20	Galvanised
Wall Mount	1000	450(H) x 400(W)	No	No	Yes	7	M20	Galvanised



Bridge & Inverted Mount Davit Sockets

Socket Type	WLL kg	Back Plate Dimensions mm	To Fit 63.5mm Diameter Pin	To Fit 65mm Diameter Pin	To Fit 75mm Diameter Pin	Fixing Size	Finish
Bridge Mount	500	250 x 250 x 250	Yes	Yes	No	M16	Galvanised
Bridge Mount	1000	250 x 250 x 250	No	No	Yes	M16	Galvanised
Inverted Mount	500	400 x 400 x 312	Yes	Yes	No	M20	Galvanised
Inverted Mount	1000	500 x 500 x 350	No	No	Yes	M20	Galvanised



Gas Detectors

ALTAIR® 4XR Multi-Gas Detector

The versatile 4-gas detector ALTAIR 4XR offers constant gas monitoring as well as a pre-entering atmosphere analysis, ideal for confined space workers.

The ALTAIR 4XR has an IP 68 rating and withstands multiple drops from 7.5 m, exceeding the military standard MILSTD-810 drop test requirements (25 drops from 1.2 m). It is equipped with MSA XCell® sensors providing longer service life and run time and faster response times that help save lives.

With its 4-year warranty, the ALTAIR 4XR is equipped with Bluetooth connectivity allowing real-time awareness with live gas readings and alarm notifications sent via SMS. For additional safety, the ALTAIR 4XR features the exclusive MotionAlert mandown alarm and InstantAlert manual alarm.



ALTAIR® 5X Multi-Gas Detector

The ALTAIR 5X detector with Bluetooth wireless technology, an integrated pump and PID option for VOC detection measures up to 6 gases simultaneously. Clearance measurements can be performed remotely using a sampling line and floating probe.

Driven by advanced MSA XCell® Sensor Technology, the ALTAIR 5X delivers faster response time, better stability, accuracy, longer service life, and cost savings. Inside, a field-proven integral pump provides consistent gas flow without the problems of externally attached components. The ergonomic design, glove-friendly buttons and a high contrast display make the ALTAIR 5X multigas detector easy to use for all applications.



Sampling Accessories

A full range of sampling accessories is available, such as sampling lines of various lengths, floating probes, and sampling probes. The versatile ALTAIR® Pump Probe is a rugged sampling accessory, capable of drawing samples from up to 30m away. It quickly converts the ALTAIR 4XR into a pumped detector for remote confined space sampling applications.



ALTAIR pump probe



Sampling probe



Sampling line with floating probe

Testing & Calibration

For your bump test and/or calibration needs, you can either opt for our GALAXY® GX2 Automated Test Stand or manual testing using a pressure reducer.



GALAXY® GX2 Automated Test Stand



Manual testing with test gas

Pump Chain & Hardware

Stainless Steel Pump Lifting Chain Grade 60

Manufactured from AISI 316L and AISI 318LN (S31803 Duplex) marine grade stainless steel, each chain is fully welded by the manufacturer, incorporating an oval master link at each end and at every metre along the length of the chain.

Each length of chain is batch numbered and grade marked for full trace-ability back to the factory. All supplied chain is proof load tested to twice the WLL prior to dispatch.

Pump lifting chain can be prepared to bespoke lengths and dispatched within 24 hours for WLL 630kg, 1,250kg, 2,000kg. For 3,850kg WLL please enquire on delivery schedules.



WLL kg	Chain Link Dimension mm	Master Link Dimensions mm	Joining Link Dimensions mm	Material Specification
200	3 x 14	5 x 42 x 22	-	316L/318LN
400	4 x 16	8 x 54 x 30	5 x 22 x 9	316L/318LN
630	5 x 15	10 x 80 x 50	6 x 26 x 13	316L/318LN
900	6 x 18	13 x 110 x 60	8 x 35 x 19	316L/318LN
1250	7 x 21	13 x 110 x 60	8 x 35 x 19	316L/318LN
1550	8 x 24	13 x 110 x 60	10 x 44 x 25	316L/318LN
2000	9 x 27	16 x 110 x 60	13 x 54 x 25	316L/318LN
2450	10 x 30	16 x 110 x 60	13 x 54 x 25	316L/318LN
3850	13 x 39	22 x 160 x 90	16 x 70 x 34	316L/318LN

Stainless Steel Shackles

All shackles supplied are approved for lifting with screw pin or captivated pin with nut and safety pin, in a range of working load limits. Shackles in the table below are held in stock, other shackle specifications available on request.

Shackle Type	WLL kg	Pin Type	Jaw Width mm
Bow shackle	1000	Captivated	26
Bow shackle	2000	Captivated	23
Bow shackle	2500	Captivated	32
Bow shackle	600	Screw Pin	24
Bow shackle	1000	Screw Pin	32
Dee shackle	1000	Screw Pin	17
Dee shackle	1000	Screw Pin	32
Dee shackle	2000	Screw Pin	20
Dee shackle	3000	Screw Pin	50
Dee shackle	4000	Screw Pin	32



Manhole Cover Lifters

Companion Cover Lifter



Providing a safe and easy-to-use method of lifting and moving covers, the rollers serve as a fulcrum point when downward pressure is applied to the handle, lifting the cover with minimal effort and reducing the risk of back injury to operators.

- Two handed operation
- Handles fold down for compact storage
- Wide nylon rollers at fulcrum point provide excellent stability
- Variety of remote keys to lock adaptor bar to cover
- Overall length: 1300mm (4'3")
- Weight: 14kg (15lbs)

Standard Cover Lifter

The rollers serve as a fulcrum point when downward pressure is applied to the handle, lifting the cover with minimal effort to reduce the risk of back injury to the operators. The standard model with rigid handles are used in pairs where keyholes are on the edge of the cover.

- Safe, one or two-man operation
- Lightweight for easy deployment and convenient storage
- Stable and easy to manoeuvre
- Heel projection on lifters gives extra leverage to loosen tight or frozen covers prior to lifting
- Adaptor bars and keys are available to lift virtually every type of cover



Lightweight Gantry Heavy Duty Gatic Cover Lifter



The Didsbury Mini Gantry best serves the bigger Elkington Gatic covers, up to 400kgs in weight. Its fully adjustable legs allow operators to lift those covers on steep sloping ground safely. A braking system is incorporated in the beam to give the operator total control over the cover during lifting and lowering.

Adjustment	Weight kg	Dimensions		WWL kg
		Max. Length mm	Max. Height mm	
Adjusts in 2.5 degrees	25	2600	1300	400 (4:1 safety factor)

- Lifts all large Elkington Gatic covers
- Lightweight, one man operation
- Lifts all covers on sloping uneven ground
- Lifts all covers on soft ground
- Larger or small models available on request
- Can be used horizontally or will adjust to lift covers on a 20 degree incline
- Tight cover jacking facility
- Will lift all covers with key holes

Standard Cover Lifter

Made from Carbon Steel for added strength and zinc plated to protect from rust. Included within the kit are:

- 2 x Interchangeable Handles 440mm long
- 2 x 33mm t-tips
- 2 x 22mm t-tips
- 2 x 10mm side entry hooks
- 2 x M10 screw tips
- 2 x M12 screw tips
- 2 x M16 screw adaptors
- 1 x short stopcock tip
- 1 x free long stopcock tip
- 1 x Black Nylon Rollsack



Lifting Components

Shackles

Within the lifting tackle industry onshore and offshore, there is a growing awareness and concern about product safety and reliability. In Europe, this is also expressed in the Machinery Directive 89/392/EEC and later amendments, which further highlight the responsibility of the manufacturer, distributor and end user of lifting gear. Therefore, our shackles are specified, monitored and documented with the most stringent requirements for the product concerned.

Product documentation

- Work certificate acc. EN 10204-2.1 or 2.2
- Certificate of basic raw material acc. EN 10204-3.1
- Manufacturer test certificate
- Proof load certificate
- Certificate with the actual breaking load experienced on test samples
- Traceable raw material/inspection certificate acc. to EN 10204-3.2
- Approval by official classification when required
- EC declaration of conformity

Testing

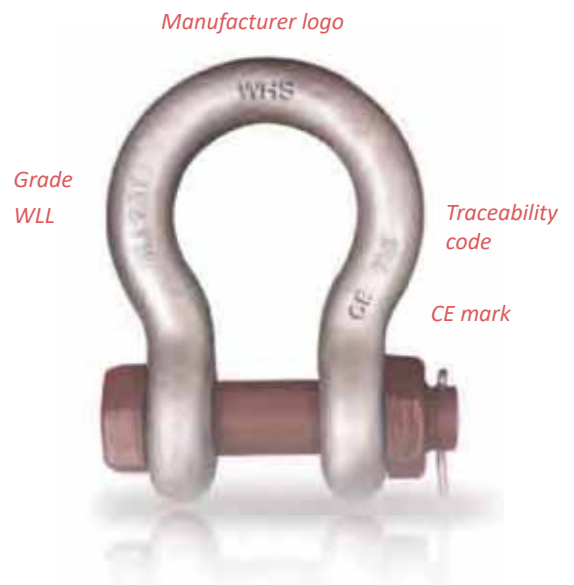
Following proof loads are used:

- 2 x WLL for standard shackles and antarctic shackles
- 1.5 x WLL for wide body sling shackles

Marking

Shackles are supplied with a work certificate marked with:

- Working Load Limit (metric tons) e.g. WLL 17T
- Manufacturer's logo
- Traceability code: e.g. A1 (A = year, 1 = first batch of year 'A')
- Grade of steel: 6 or 8
- CE mark to confirm conformity with the Machinery Directive



Bow shackle with safety bolt



Bow shackle with screw pin



D shackle with safety bolt



D shackle with screw pin

- Standard: US Fed. spec RR-C-271 - EN 13889
- Material: High tensile steel, quenched and tempered - Grade 6
- Finish: All parts hot dip galvanised and red/brown painted bolt & pin on top of galvanisation

- Safety factor: 6:1, MBL equals 6 x WLL
- Documentation: Test certificate and traceable 3.1 certificate
- Temperature: -20°C - 200°C (120T & above = 0°C - 200°C)

S-BXE



Product Number	WLL kg	W	D	d	E	P	S	L	O	Self Weight
S-BXE 0.5-1/4	500	12	8	6.5	15.5	6.5	29	37	20	0.05
S-BXE 0.75-5/16	750	13.5	10	8	19	8	31	45	21.5	0.1
S-BXE 1-3/8	1000	17	12	9.5	23	9.5	36.5	54	26	0.13
S-BXE 1.5-7/16	1500	19	14	11	27	11	43	62	29.5	0.22
S-BXE 2-1/2	2000	20.5	16	13	30	13	48	71.5	33	0.31
S-BXE 3.25-5/8	3250	27	20	16	38	17.5	60.5	89	43	0.67
S-BXE 4.75-3/4	4750	32	22	19	46	20.5	71.5	105	51	1.14
S-BXE 6.5-7/8	6500	36.5	27	22.5	53	24.5	84	121	58	1.76
S-BXE 8.5-1	8500	43	30	25.5	60.5	27	95	136.5	68.5	2.58
S-BXE 9.5-1 1/8	9500	46	33	29.5	68.5	32	108	149.5	74	3.96
S-BXE 12-1 1/4	12000	51.5	36	33	76	35	119	164.5	82.5	5.06
S-BXE 13.5-1 3/8	13500	57	39	36	84	38	133.5	179	92	7.29
S-BXE 17-1 1/2	17000	60.5	42	39	92	41	146	194.5	98.5	8.75
S-BXE 25-1 3/4	25000	73	52	47	106.5	57	178	234	127	14.22
S-BXE 35-2	35000	82.5	60	53	122	61	197	262.5	146	21
S-BXE 55-2 1/2	55000	105	72	69	144.5	79.5	267	339	184	42.12
S-BXE 85-3	85000	127	85	76	165	92	330	394	200	74.8
S-BXE 120-3 1/2	120000	133.5	95	92	203	104.5	371.4	444	228.5	123.6
S-BXE 150-4	150000	140	110	104	228.5	116	368	489	254	165.9
S-BXE 300-5 1/8	300000	200	150	130	320		450		300	363
S-BXE 500-6 1/2	500000	240	185	165	390	165	557.5	779	360	684
S-BXE 800-8	800000	300	240	207	493	207	660	952	440	1313
S-BXE 1000-9	1000000	390	270	240	556	240	780.5	1136	560	2024

S-BWE



Product Number	WLL kg	W	D	d	E	P	S	L	O	Self Weight
S-BWE 0.5-1/4	500	12	8	6.5	15.5	6.5	29	36.5	20	0.05
S-BWE 0.75-5/16	750	13.5	10	8	19	8	31	44.5	21.5	0.1
S-BWE 1-3/8	1000	17	12	9.5	23	9.5	36.5	52.5	26	0.13
S-BWE 1.5-7/16	1500	19	14	11	27	11	43	62	29.5	0.21
S-BWE 2-1/2	2000	20.5	16	13	30	13	48	70.5	33	0.3
S-BWE 3.25-5/8	3250	27	20	16	38	17.5	60.5	88	43	0.64
S-BWE 4.75-3/4	4750	32	22	19	46	20.5	71.5	102.5	51	1.09
S-BWE 6.5-7/8	6500	36.5	27	22.5	53	24.5	84	121	58	1.7
S-BWE 8.5-1	8500	43	30	25.5	60.5	27	95	139	68.5	2.5
S-BWE 9.5-1 1/8	9500	46	33	29.5	68.5	32	108	154	74	3.79
S-BWE 12-1 1/4	12000	51.5	36	33	76	35	119	170.5	82.5	4.89
S-BWE 13.5-1 3/8	13500	57	39	36	84	38	133.5	186.5	92	7.04
S-BWE 17-1 1/2	17000	60.5	42	39	92	41	146	201	98.5	8.35
S-BWE 25-1 3/4	25000	73	52	47	106.5	57	178	244	127	13.72
S-BWE 35-2	35000	82.5	60	53	122	61	197	275	146	20.33
S-BWE 55-2 1/2	55000	105	72	69	144.5	79.5	267	346	184	40.92

S-DXE



Product Number	WLL kg	W	D	d	E	P	S	L	Self Weight
S-DXE 0.5-1/4	500	12	8	6.5	15.5	6.5	22	37	0.06
S-DXE 0.75-5/16	750	13.5	10	8	19	8	26	45	0.1
S-DXE 1-3/8	1000	17	12	9.5	23	9.5	32	54	0.13
S-DXE 1.5-7/16	1500	19	14	11	27	11	36.5	62	0.21
S-DXE 2-1/2	2000	20.5	16	13	30	13	41.5	71.5	0.28
S-DXE 3.25-5/8	3250	27	20	16	38	16	51	89	0.6
S-DXE 4.75-3/4	4750	32	22	19	46	20.5	60.5	105	1.04
S-DXE 6.5-7/8	6500	36.5	27	22.5	53	24.5	71.5	121	1.63
S-DXE 8.5-1	8500	43	30	25.5	60.5	25.5	81	136.5	2.38
S-DXE 9.5-1 1/8	9500	46	33	29	68.5	32	91	149.5	3.59
S-DXE 12-1 1/4	12000	51.5	36	32	76	35	100	164.5	4.65
S-DXE 13.5-1 3/8	13500	57	39	35	84	38	111	179	6.71
S-DXE 17-1 1/2	17000	60.5	42	38	92	41	122	194.5	8.05
S-DXE 25-1 3/4	25000	73	52	44.5	106.5	54	146	234	13.18
S-DXE 35-2	35000	82.5	60	51	122	51	171.5	262.5	19.3
S-DXE 55-2 1/2	55000	105	72	66.5	144.5	66.5	206	339	37.22
S-DXE 85-3	85000	127	85	76	165	89	216	394	65.3

S-DWE



Product Number	WLL kg	W	D	d	E	P	S	L	Self Weight
S-DWE 0.5-1/4	500	12	8	6.5	15.5	6.5	22	36.5	0.05
S-DWE 0.75-5/16	750	13.5	10	8	19	8	26	44.5	0.1
S-DWE 1-3/8	1000	17	12	9.5	23	9.5	32	52.5	0.13
S-DWE 1.5-7/16	1500	19	14	11	27	11	36.5	62	0.21
S-DWE 2-1/2	2000	20.5	16	13	30	13	41.5	70.5	0.3
S-DWE 3.25-5/8	3250	27	20	16	38	16	51	88	0.64
S-DWE 4.75-3/4	4750	32	22	19	46	20.5	60.5	102.5	1.09
S-DWE 6.5-7/8	6500	36.5	27	22.5	53	24.5	71.5	121	1.7
S-DWE 8.5-1	8500	43	30	25.5	60.5	25.5	81	139	2.5
S-DWE 9.5-1 1/8	9500	46	33	29	68.5	32	91	153	3.79
S-DWE 12-1 1/4	12000	51.5	36	32	76	35	100	168	4.89
S-DWE 13.5-1 3/8	13500	57	39	35	84	38	111	184.5	7.04
S-DWE 17-1 1/2	17000	60.5	42	38	92	41	122	199	8.35
S-DWE 25-1 3/4	25000	73	52	44.5	106.5	54	146	237	13.72
S-DWE 35-2	35000	82.5	60	51	122	51	171.5	271	20.33
S-DWE 55-2 1/2	55000	105	72	66.5	144.5	66.5	203	341	40.92

S-BXA



- Bow shackle with safety bolt
- Standard: DNV 2.7.1 and US Fed. spec RR-C-271
- Material: Special alloy steel, quenched and tempered
- Finish: All parts hot dip galvanised and red/brown painted bolt and pin on top of galvanisation
- Safety factor: As per DNV 2.7.1. (8:1 - 6:1)
- Documentation: Test certificate and traceable 3.1 certificate
- Temperature: -40°C - 200°C

Product Number	WLL kg	W	D	d	E	P	S	L	O	Self Weight
S-BXA 2-12	2000	20.5	16	13	30	13	48	71.5	33	0.31
S-BXA 3.25-5/8	3250	27	20	16	38	17.5	60.5	89	43	0.67
S-BXA 4.75-3/4	4750	32	22	19	46	20.5	71.5	105	51	1.14
S-BXA 6.5-7/8	6500	36.5	27	22.5	53	24.5	84	121	58	1.76
S-BXA 8.5-1	8500	43	30	25.5	60.5	27	95	136.5	68.5	2.58
S-BXA 9.5-1 1/8	9500	46	33	29.5	68.5	32	108	149.5	74	3.96
S-BXA 12-1 1/4	12000	51.5	36	33	76	35	119	164.5	82.5	5.06
S-BXA 13.5-1 3/8	13500	57	39	36	84	38	133.5	179	92	7.29
S-BXA 17-1 1/2	17000	60.5	42	39	92	41	146	194.5	98.5	8.75
S-BXA 25-1 3/4	25000	73	52	47	106.5	57	178	234	127	14.22
S-BXA 35-2	35000	82.5	60	53	122	61	197	262.5	146	21
S-BXA 55-2 1/2	55000	105	72	69	144.5	79.5	267	339	184	42.12
S-BXA 85-3	85000	127	85	76	165	92	330	394	200	74.8
S-BXA 120-3 1/2	120000	133.5	95	92	203	104.5	371.4	444	228.5	123.6
S-BXA 150-4	150000	140	110	104	228.5	116	368	489	254	165.9
S-BXA 300-5 1/8	300000	200	150	130	320	-	450	-	300	363

S-BKE

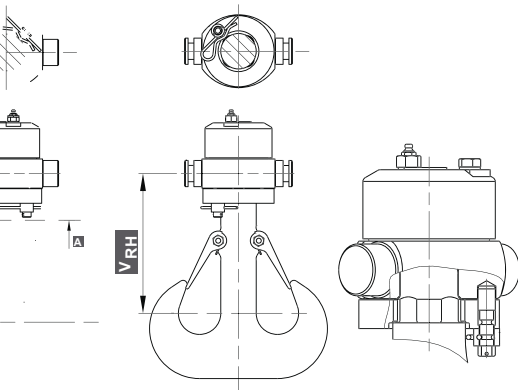
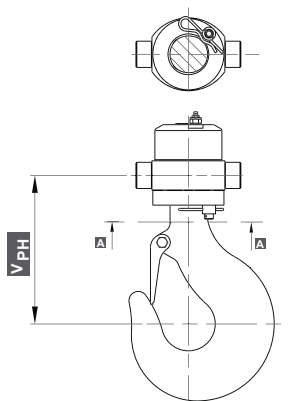
- Bow shackles with safety bolt
- Material: High tensile steel, quenched & tempered
- Finish: Hot dip galvanised and red/brown painted bolt and pin
- Safety factor: 5:1, MBL equals 5 x WLL
- Documentation: Test certificate and traceable 3.1 certificate



Item no.	WLL kg	W	D	P	A	B	S	Self Weight
S-BKE 40	40000	80	51	97	-	140	220	15.3
S-BKE 55	55000	85	57	100	55	160	240	32.6
S-BKE 75	75000	105	70	120	-	186	290	67.5
S-BKE 125	125000	130	80	150	-	220	365	110.6
S-BKE 150	150000	140	95	170	90	250	390	154.8
S-BKE 200	200000	150	105	205	100	280	460	251.8
S-BKE 250	-	-	-	-	-	-	-	-
S-BKE 300	300000	185	134	265	120	350	630	451.7
S-BKE 400	400000	220	160	320	145	370	650	758.9
S-BKE 500	500000	250	180	340	160	450	680	803
S-BKE 600	600000	275	200	370	170	490	740	1031
S-BKE 700	700000	300	215	400	190	540	750	1260
S-BKE 800	800000	325	230	420	200	554	850	1710
S-BKE 900	900000	350	255	440	220	584	850	1980
S-BKE 1000	1000000	380	270	460	240	614	850	2350
S-BKE 1200	1200000	-	-	-	-	-	-	-
S-BKE 1500	1500000	460	320	560	280	680	950	3500

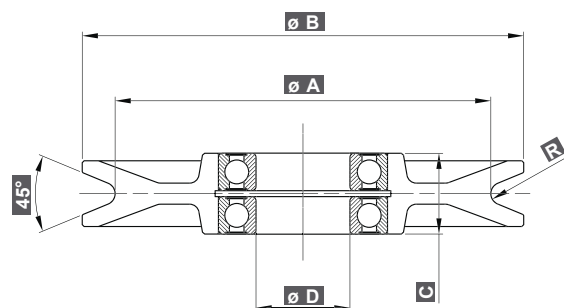
Sheaves, Blocks & Crane Blocks

Suspension Locking Hook System (BRC series)



Product Number				Size	Max. applicable torque Nm	Dimensions	
Point Hook		Ramshorn Hook				Other dimensions see 635 & 640 series	
						∅PH mm	∅RH mm
Class P	Class V	Class P	Class V				
With crosshead form B With crosshead form C							
640 504 PS	640 504 VS	635 504 PS	635 504 VS	4	1000	220	200
640 604 PS	640 604 VS	635 604 PS	635 604 VS				
640 505 PS	640 505 VS	-	-	5	1000	230	-
640 605 PS	640 605 VS	-	-				
640 506 PS	640 506 VS	635 506 PS	635 506 VS	6	2500	250	240
640 606 PS	640 606 VS	635 606 PS	635 606 VS				
640 508 PS	640 508 VS	635 508 PS	635 508 VS	8	3000	270	265
640 608 PS	640 608 VS	635 608 PS	635 608 VS				
640 510 PS	640 510 VS	635 510 PS	635 510 VS	10	6500	280	280
640 610 PS	640 610 VS	635 610 PS	635 610 VS				
640 512 PS	640 512 VS	635 512 PS	635 512 VS	12	7500	315	315
640 612 PS	640 612 VS	635 612 PS	635 612 VS				
640 516 PS	640 516 VS	635 516 PS	635 516 VS	16	11000	370	370
640 616 PS	640 616 VS	635 616 PS	635 616 VS				
640 520 PS	640 520 VS	635 520 PS	635 520 VS	20	12000	415	415
640 620 PS	640 620 VS	635 620 PS	635 620 VS				
640 525 PS	640 525 VS	635 525 PS	635 525 VS	25	13000	460	460
640 625 PS	640 625 VS	635 625 PS	635 625 VS				
640 532 PS	640 532 VS	635 532 PS	635 532 VS	32	24500	500	500
640 632 PS	640 632 VS	635 632 PS	635 632 VS				
640 540 PS	640 540 VS	635 540 PS	635 540 VS	40	25000	565	565
640 640 PS	640 640 VS	635 640 PS	635 640 VS				
640 550 PS	640 550 VS	635 550 PS	635 550 VS	50	34000	620	620
640 650 PS	640 650 VS	635 650 PS	635 650 VS				

Sheave With Ball Bearings (1SB series)



- Material: Carbon steel, fitted with conical roller bearings
- Safety factor: MBL equals 4 x WLL

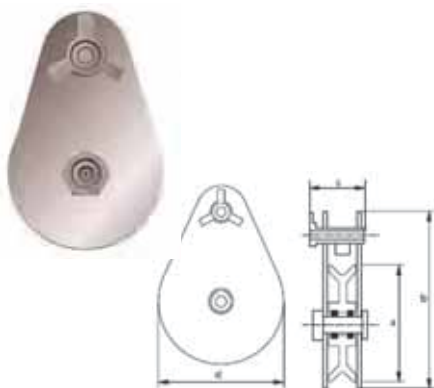
- Finish: Painted
- Note: Working Load Limit (WLL) is on the head fitting

Snatch Blocks Type 601S with shackle



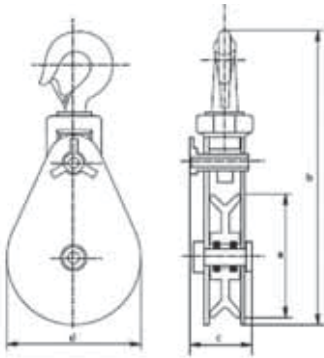
Product Number	WLL kg	Diameter Wire Rope mm	Diameter Outside Sheave a mm	Length b mm	Width c mm	Width Outside d mm	Weight Each kg
W601S-2T/75	2000	7-9	75	293	79	82	3.8
W601S-4T/115	4000	10-12	115	363	107	120	6.1
W601S-4T/152	4000	12-14	152	417	107	160	9.5
W601S-8T/152	8000	20-22	152	477	124	160	14.6
W601S-12T/152	12000	20-22	152	555	154	160	25
W601S-15T/152	15000	24-26	152	585	170	160	30
W601S-4T/203	4000	10-12	203	478	107	210	12
W601S-8T/203	8000	20-22	203	526	124	210	16
W601S-12T/203	12000	20-22	203	580	154	210	32
W601S-15T/203	15000	24-26	203	646	170	210	35
W601S-8T/254	8000	20-22	254	582	124	260	18
W601S-12T/254	12000	20-22	254	680	154	260	39
W601S-15T/254	15000	24-26	254	705	170	260	43
W601S-8T/305	8000	20-22	305	612	124	310	27
W601S-12T/305	12000	20-22	305	745	154	310	53
W601S-15T/305	15000	24-26	305	771	170	310	55
W601S-8T/357	8000	20-22	357	662	124	360	31
W601S-12T/357	12000	20-22	357	770	154	360	60
W601S-15T/357	15000	24-26	357	798	170	360	63
W601S-8T/406	8000	20-22	406	712	124	410	35
W601S-12T/406	12000	20-22	406	820	154	410	67
W601S-15T/406	15000	24-26	406	848	170	410	70
W601S-8T/457	8000	20-22	457	762	124	460	42
W601S-12T/457	12000	20-22	457	878	154	460	75
W601S-15T/457	15000	24-26	457	898	170	460	78

Snatch Blocks Type 601T with shackle



Product Number	WLL kg	Diameter Wire Rope mm	Diameter Outside Sheave a mm	Length b mm	Thickness c mm	Width Outside d mm	Weight Each kg
W601T-4T/115	4000	10-12	115	213	83	120	4
W601T-8T/152	8000	20-22	152	305	108	160	9
W601T-8T/203	8000	20-22	203	357	108	210	12
W601T-8T/254	8000	20-22	254	406	108	260	16

Snatch Blocks Type 601H with hook



Product Number	WLL <i>tons</i>	Diameter wire rope <i>mm</i>	Diameter outside sheave <i>a mm</i>	Length <i>b mm</i>	Thickness <i>c mm</i>	Width outside <i>d mm</i>	Weight each <i>kg</i>
W601H-2T/75	2000	7-9	75	292	57	82	4
W601H-4T/115	4000	10-12	115	343	83	120	6.1
W601H-4T/152	4000	12-14	152	384	83	160	13.8
W601H-8T/152	8000	20-22	152	445	708	160	12.5
W601H-12T/152	12000	20-22	152	572	127	160	23
W601H-15T/152	15000	24-26	152	587	127	160	23
W601H-4T/203	4000	10-12	203	435	83	210	8
W601H-8T/203	8000	20-22	203	495	108	210	15
W601H-12T/203	12000	20-22	203	622	127	210	25
W601H-15T/203	15000	24-26	203	638	127	210	26
W601H-8T/254	8000	20-22	254	546	108	260	19
W601H-12T/254	12000	20-22	254	673	127	260	28
W601H-15T/254	15000	24-26	254	689	127	260	28
W601H-8T/305	8000	20-22	305	597	108	310	23
W601H-12T/305	12000	20-22	305	725	127	310	31
W601H-15T/305	15000	24-26	305	740	127	310	31
W601H-8T/357	8000	20-22	357	648	108	360	31
W601H-12T/357	12000	20-22	357	775	127	360	33
W601H-15T/357	15000	24-26	357	791	127	360	33
W601H-8T/406	8000	20-22	406	699	108	410	36
W601H-12T/406	12000	20-22	406	825	127	410	36
W601H-15T/406	15000	24-26	406	841	127	410	36
W601H-8T/457	8000	20-22	457	749	108	460	40
W601H-12T/457	12000	20-22	457	876	127	460	42
W601H-15T/457	15000	24-26	457	892	127	460	43

Galvanised Malleable Iron Blocks



- Material: Galvanised malleable iron
- Safety factor: MBL equals 4 x WLL

- Finish: Hot dipped galvanised
- Note: WLL is on the head fitting

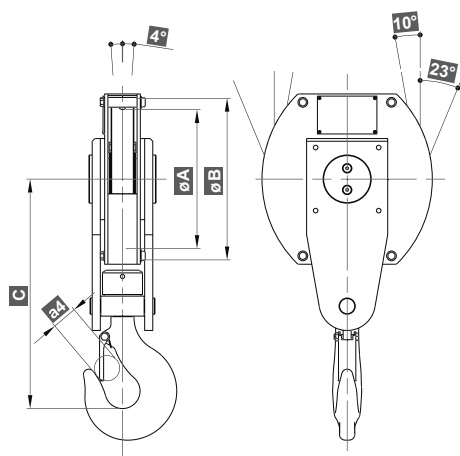
Crane Block



Technical Information				1 Sheave	2 Sheaves	
Size	Rope mm	Load Capacities t	Hook			
		M5	DIN 15401	1UB	1HB	1HA
02	7-8	1.6	1-V	1UB 022 02	-	-
		3.2	1.6-V	-	1HB 022 02	-
03	8-9	2	1-V	1UB 032 02	-	-
		4	2.5-T	-	1HB 032 03	-
04	9-10	2.5	1.6-V	1UB 042 04	-	-
		5	2.5-T	-	1HB 042 04	-
05	10-11	3.2	1.6-V	1UB 052 05	-	-
		6.3	4-T	-	-	1HA 052 05
		12.5	5-T	-	-	-
06	11-12	4	2.5-T	1UB 062 06	-	-
		8	4-T	-	-	1HA 062 06
		16	6-T	-	-	-
07	12-13	5	2.6-T	1UB 072 07	-	-
		10	5-T	-	1HB 072 07	1HA 072 07
		16	6-T	-	-	-
		20	8-T	-	-	-
08	13-14	6.3	4-T	1UB 082 08	-	-
		12.5	6-T	-	-	1HA 082 08
		20	8-T	-	-	-
		25	10-T	-	-	-
		32	12-T	-	-	-
		40	16-T	-	-	-
09	15-16	8	4-T	1UB 092 09	-	-
		16	8-T	-	-	1HA 092 09
		25	10-T	-	-	-
		32	12-T	-	-	-
		40	16-T	-	-	-
		50	20-T	-	-	-
10	17-18	10	5-T	1UB 102 10	-	-
		20	10-T	-	-	1HA 102 10
		32	12-T	-	-	-
		40	16-T	-	-	-
		50	20-T	-	-	-
		63	25-V	-	-	-
11	19-20	12.5	5-V	1UB 112 11	-	-
		25	12-T	-	-	1HA 112 11
		40	16-T	-	-	-
		50	20-T	-	-	-
		63	25-V	-	-	-
		80	32-V	-	-	-
12	20-22	32	16-T	-	-	1HA 122 12
		50	20-T	-	-	-
		63	25-T	-	-	-
13	22-24	40	20-T	-	-	1HA 132 13

3 Sheaves		4 Sheaves			5 Sheaves	6 Sheaves
1HE	1HF	1HG	1HL	1HM	1HP	1HR
-	-	-	-	-	-	-
-	-	-	-	-	-	-
-	-	-	-	-	-	-
-	-	-	-	-	-	-
-	-	-	-	-	-	-
-	-	-	-	-	-	-
-	-	-	-	-	-	-
-	-	-	1HL 052 05	-	-	-
-	-	-	-	-	-	-
-	-	-	-	-	-	-
-	-	-	1HL 062 06	-	-	-
-	-	-	-	-	-	-
-	-	-	-	-	-	-
1HE 072 07	-	-	-	-	-	-
-	-	1HG 072 07	1HL 072 07	-	-	-
-	-	-	-	-	-	-
-	-	-	-	-	-	-
1HE 082 08	1HF 082 08	-	-	-	-	-
-	-	1HG 082 08	1HL 082 08	1HM 082 08	-	-
-	-	-	-	-	1HP 082 08	-
-	-	-	-	-	-	1HR 082 08
-	-	-	-	-	-	-
-	-	-	-	-	-	-
1HE 092 09	1HF 092 09	-	-	-	-	-
-	-	1HG 092 09	1HL 092 09	1HM 092 09	-	-
-	-	-	-	-	1HP 092 09	-
-	-	-	-	-	-	1HR 092 09
-	-	-	-	-	-	-
-	-	-	-	-	-	-
1HE 102 10	1HF 102 10	-	-	-	-	-
-	-	1HG 102 10	1HL 102 10	1HM 102 10	-	-
-	-	-	-	-	1HP 102 10	-
-	-	-	-	-	-	1HR 102 10
-	-	-	-	-	-	-
-	-	-	-	-	-	-
1HE 112 11	1HF 112 11	-	-	-	-	-
-	-	1HG 112 11	1HL 112 11	1HM 112 11	-	-
-	-	-	-	-	1HP 112 11	-
-	-	-	-	-	-	1HR 112 11
-	-	-	-	-	-	-
1HE 122 12	-	-	-	-	-	-
-	-	1HG 122 12	1HL 122 12	-	-	-
-	-	-	-	-	-	-

Overhead Crane Block 1 sheave (1UB series)



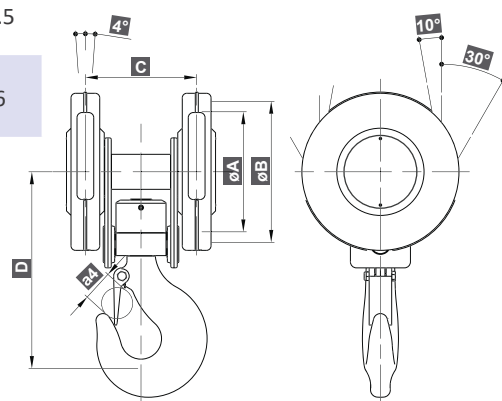
Meets F.E.M. 1.001

Size	Point Hook DIN15401	Product Number	Rope mm	Load Capacities kg		Dimensions				Weight kg
				M5	M6	a4 mm	A mm	B mm	C mm	
02	1-V	1UB 022 02	7		1250					
			8	1600		35	152	175	305	11.3
03	1-V	1UB 032 03	8		1600					
			9	2000		35	172	200	317	15
04	1.6-V	1UB 042 04	9		2000					
			10	2500		38	180	210	348	18
05	1.6-V	1UB 052 05	10		2500					
			11	3200		38	200	235	359	22.5
06	2.5-T	1UB 062 06	11		3200 (4000)					
			12	4000 (5000)		43	228	270	424	43
07	2.5-T	1UB 072 07	12		4000					
			13	5000		43	257	297	424	46
08	4-T	1UB 082 08	13		5000 (6300)					
			14	6300 (8000)		48	280	330	491	67
09	4-T	1UB 092 09	15		6300					
			16	8000		48	320	375	491	76
10	5-T	1UB 102 10	17		8000					
			18	10000		71	355	425	557	113
11	5-V	1UB 112 11	19		10					
			20	12500		71	400	470	580	140

Overhead Crane Block 2 sheaves (1HB series)

Size	Point Hook DIN15401	Product Number	Rope mm	Load Capacities kg		Dimensions					Weight kg
				M5	M6	a4 mm	A mm	B mm	C mm	D mm	
02	1.6-V	1HB 022 02	7		2500						
			8	3200		38	152	175	143	263	16.5
03	2.5-T	1HB 032 03	8		3200						
			9	4000		43	172	200	170	297	26
04	2.5-T	1HB 042 04	9		4000						
			10	5000		43	180	210	172	297	27.5
07	5-T	1HB 072 07	12		8000						
			13	10000		56	257	297	222	373	66

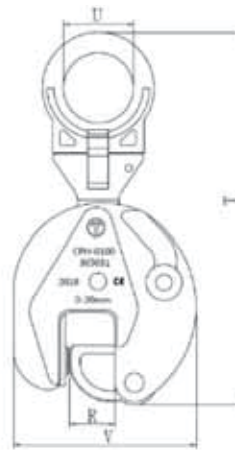
Meets F.E.M. 1.001



Lifting Clamps

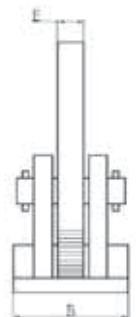
Universal Plate Clamp

Product Number	Capacity kg	Dimensions mm					Net Weight kg
		Jaw Opening R	T	U	V	L	
CPU-0050	500	0-15	205	30	105	48	2
CPU-0100	1000	0-20	300	50	145	66	5
CPU-0200	2000	0-25	385	68	175	75	8
CPU-0320	3200	0-30	430	75	215	102	15
CPU-0500	5000	0-50	500	68	232	112	21



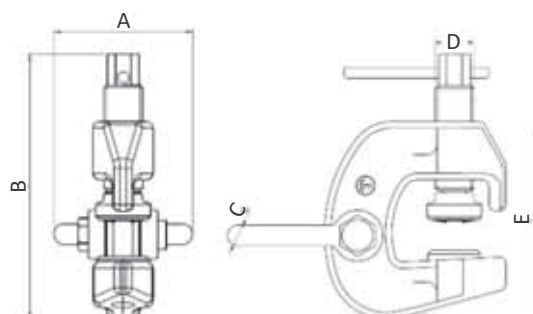
Horizontal Plate Clamp

Product Number	Capacity kg	Dimensions mm						Net Weight kg
		Jaw Opening	A	B	C	D	E	
CPH-0050	500	0-35	140	65	38	20	16	2.3
CPH-0100	1000	0-60	180	80	68	25	16	5.8
CPH-0200	2000	0-60	180	80	68	25	16	6.7



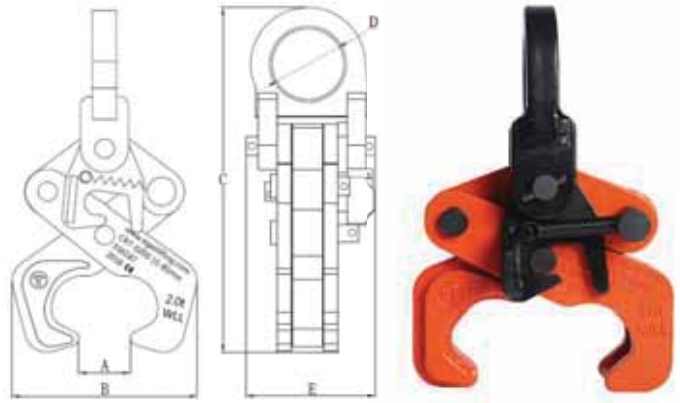
Screw Cam Clamp

Product Number	Capacity kg	Dimensions mm						Net Weight kg
		Jaw Opening	A	B	C	D	E	
CSC-0050	500	0-28	52	158	11	18	105	0.7
CSC-0150	1000	0-32	77	210	16	30	152	4
CSC-0300	3000	0-60	88	270	19	36	191	6



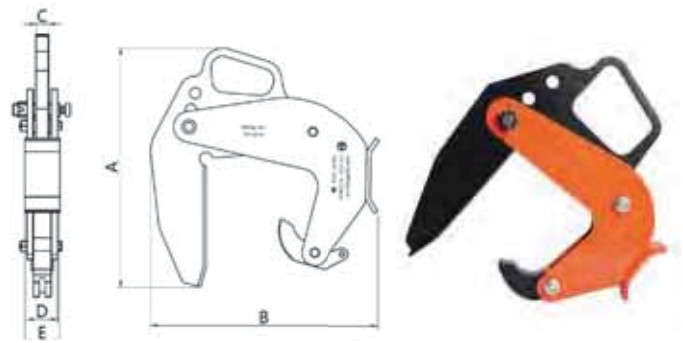
Rail Clamp

Product Number	Capacity kg	Dimensions mm					Net Weight kg
		Jaw Opening A	B Max	C Max	D	E	
CRT-0200	2000	15-85	170	302	60	111	6.2



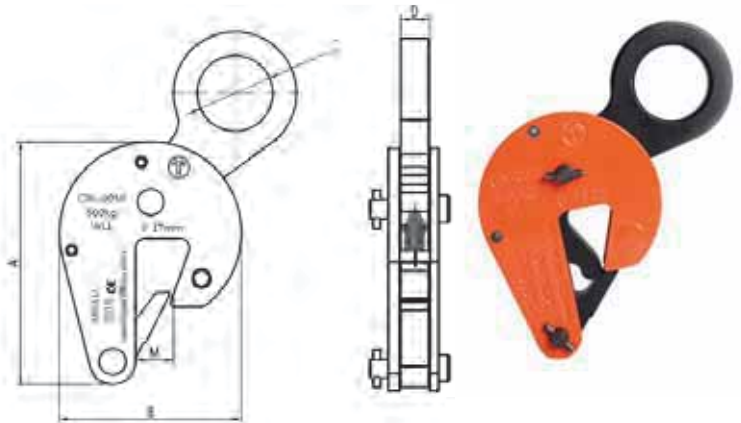
Pipe Lifting Clamp

Product Number	Capacity kg	Dimensions mm						Net Weight kg
		Jaw Opening	A	B	C	D	E	
CPL-0150	1500	40-120	415	361	20	54	64	12.3
CPL-0300	3000	90-220	490	486	25	61	70	27.5



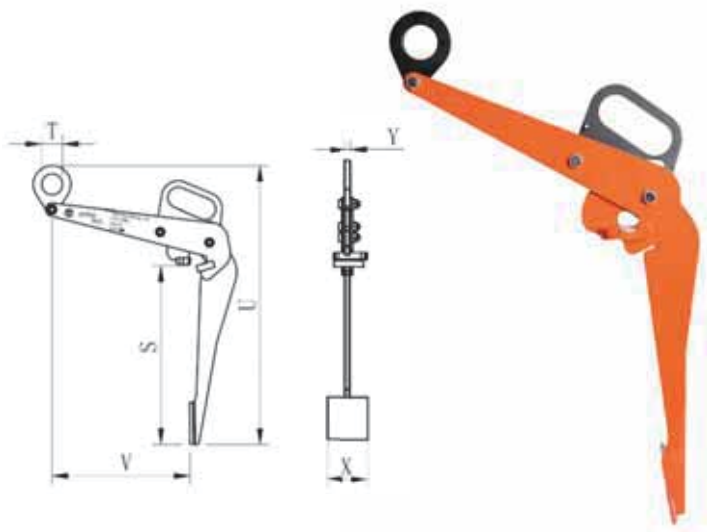
Drum Lifting Clamp

Product Number	Capacity kg	Dimensions mm					Net Weight kg
		Jaw Opening	A	B	C	D	
CDL-0050	500	0-17	128	96	40	16	1.6

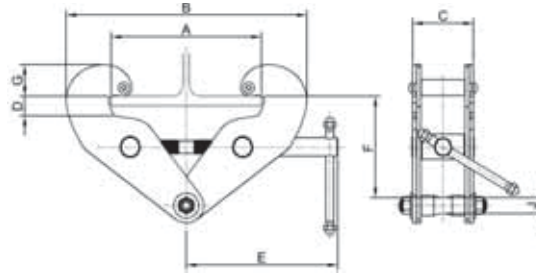


Vertical Drum Clamp

Product Number	Capacity kg	Dimensions mm						Net Weight kg
		U	S	V	T	X	Y	
CDV-0060	600	765	434	305	50	100	12	7

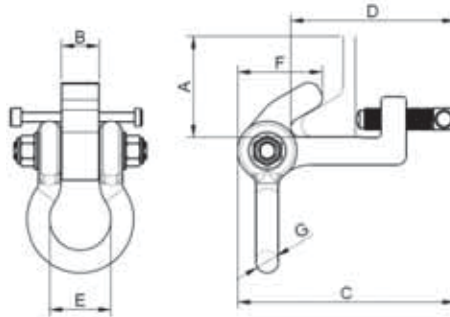


Adjustable Beam Clamp



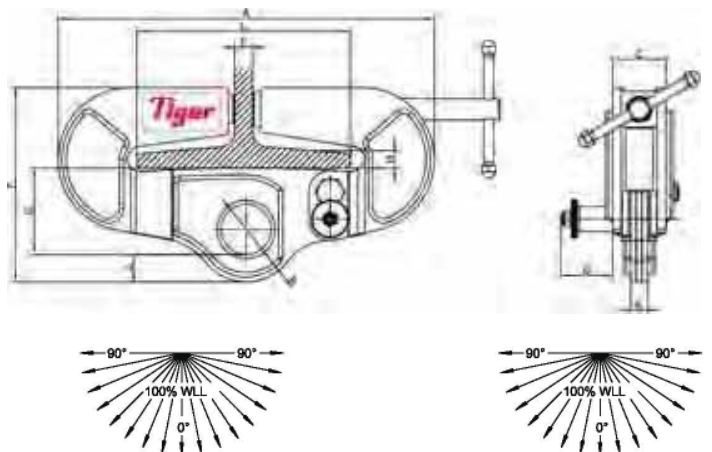
Product Number	Capacity kg	Dimensions mm								Net Weight kg
		A	B	C	D	E	F	G	J	
BC-0100	1000	72-210	182-328	77	26	190	144-117	52-38	20	3.5
BC-0200	2000	72-210	182-328	85	26	190	144-117	52-38	20	4.5
BC-0300	3000	73-305	214-460	107	35	240	224-179	58-40	22	8.0
BC-0500	5000	73-305	214-460	121	35	240	224-175	58-40	28	10.0
BC-1000	10000	120-350	289-496	135	36	277	231-182	75-58	38	24.0

Bulb Flat Bar Anchor/Clamp



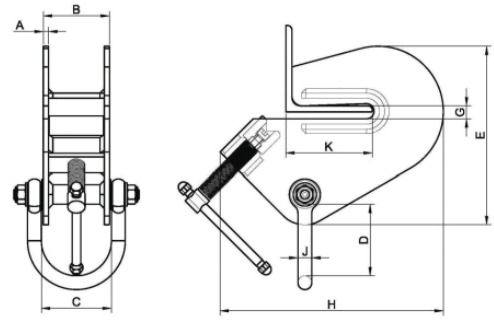
Product Number	Capacity kg	Dimensions mm							Net Weight kg
		A	B	C	D	E	F	G	
BCB-0150	1500	160-240	36	173-200	125-151	58	71	22	3.6
BCB-0300	3000	240-320	42	214-241	155-182	68	94	25	6.4

Universal Beam Clamp



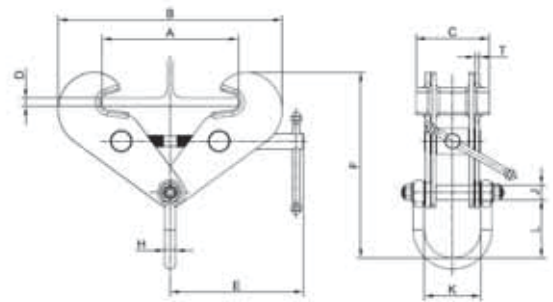
Product Number	Capacity kg	Dimensions mm											Net Weight kg
		A	B	C	D	E	F	G	H	J	K	L	
BCU-0300	3000	387	60	70	63	32	235	100	25.4	28	20	125-204	15.5
BCU-0500	5000	524	70	74	72	32	270	120	25.4	38	24	125-305	27.0
BCU-1000	10000	524	70	75	82	32	278	120	25.4	38	25	125-305	TBA

Adjustable Angle Beam Clamp



Product Number	Capacity kg	Dimensions mm									Net Weight kg
		A	B	C	D	E	G	H	J	K	
BCA-0100	1000	6	76	81	83	206	15	258	16	38-101	5.5
BCA-0300	3000	10	106	112	104	343	25	490	22	101-203	23.5

Fixed Jaw Heavy Duty Beam Clamp With Shackle



Product Number	Capacity kg	Dimensions mm												Net Weight kg
		A	B	C	D	E	F	H	J	K	L	M	T	
BCF-0100	1000	75-195	206-321	105	20	190	300-266	16	21	80	84	-	6	5.5
BCF-0200	2000	75-195	206-321	105	20	190	311-276	18	21	88	95	-	8	6.5
BCF-0300	3000	100-350	223-476	140	25	270	418-344	22	27	110	105	-	10	12.0
BCF-030S	3000	75-190	216-325	140	20	190	310-271	22	27	110	105	-	10	9.5
BCF-0500	5000	100-310	223-438	140	25	286	424-368	27	27	124	111	-	12	14.5
BCF-050S	5000	75-190	216-325	140	20	190	315-276	27	27	124	111	-	12	11.0
BCF-1000	10000	120-350	282-511	210	30	314	460-389	32	37	83	120	-	16	26.5
BCF-1500	15000	203-457	463-742	250	36	416	644-558	38	44	99	146	400	20	76.0
BCF-2000	20000	203-457	471-766	300	50	416	697-609	45	49	126	179	410	25	100.0
BCF-3000	30000	203-457	483-800	390	63	416	742-648	50	57	138	197	416	20	152

Lifting Rings & Swivel Eye Bolts

Double Swivel Ring

Metric/UNC threads



Metric	SF 5:1 WLL: 70 - 8,500kg SF 4:1 WLL: 100 - 9,000kg
UNC	SF 5:1 WLL: 330 - 13,500lbs SF 4:1 WLL: 450 - 13,500lbs

Double Swivel Shackle

Metric threads UNC threads



Metric	SF 5:1 WLL: 4,500 - 25,000kg SF 4:1 WLL: 5,500 - 32,100kg
UNC	SF 5:1 WLL: 10,000 - 48,500lbs SF 4:1 WLL: 13,000 - 55,000lbs

Mega Double Swivel Shackle

Metric/UNC threads



Metric	SF 5:1 WLL: 26,000 - 48,000kg SF 4:1 WLL: 33,000 - 60,000kg
UNC	SF 5:1 WLL: 60,000 - 88,000lbs SF 4:1 WLL: 75,000 - 110,000lbs

Female Double Swivel Shackle

Metric/UNC threads



Metric	SF 5:1 WLL: 4,500 - 19,000kg SF 4:1 WLL: 5,500 - 21,000kg
UNC	SF 5:1 WLL: 10,000 - 38,000lbs SF 4:1 WLL: 13,000 - 50,000lbs

Giga Double Swivel Shackle

Metric threads



Metric	SF 5:1 WLL: 125,000kg
--------	-----------------------

Swivel Eye Bolt

Metric/UNC threads



Metric	SF 5:1 WLL: 400 - 15,000kg SF 4:1 WLL: 500 - 16,000kg
UNC	SF 5:1 WLL: 1,200 - 20,000lbs SF 4:1 WLL: 1,500 - 25,000lbs

Female Double Swivel Ring

Metric/UNC threads



Metric	SF 5:1 WLL: 400 - 2,500kg SF 4:1 WLL: 500 - 4,500kg
UNC	SF 5:1 WLL: 330 - 7,900lbs SF 4:1 WLL: 450 - 9,800lbs

Double Swivel Lifting Point

Metric/UNC threads



Metric	SF 5:1 WLL: 300 - 2,500kg
UNC	SF 5:1 WLL: 650 - 5,500lbs

Triple Swivel Ring

Metric/UNC threads



Metric	SF 5:1 WLL: 300 - 12,500kg SF 4:1 WLL: 300 - 600kg
UNC	SF 5:1 WLL: 650 - 20,000lbs SF 4:1 WLL: 50,000lbs

Double Swivel Hook

Metric/UNC threads



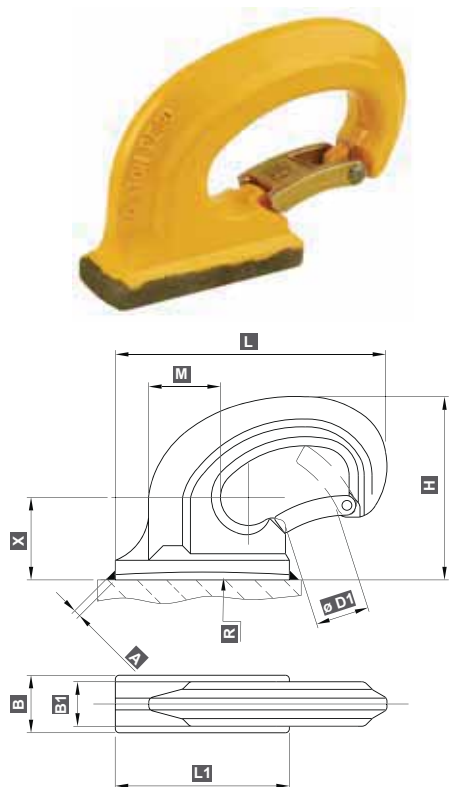
Metric	SF 5:1 WLL: 300 - 2,500kg
UNC	SF 5:1 WLL: 650 - 5,500lbs

Adaptor

Metric/UNC threads



Weld-On Bucket Hook Type C (C series)

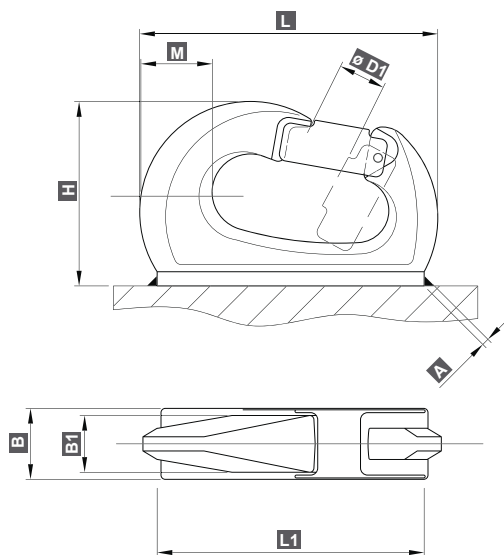


Product Number	WLL kg	Size	Dimensions									Weight kg
			B1 mm	X mm	M mm	L mm	L1 mm	H mm	B mm	Ø D1 mm	A mm	
700 052 00	1000	C201	25	36.5	29	106	69	77	30	21	4	0.72
700 053 00	2000	C202	29	44	40	132	85	92	35	25	4	1.2
700 054 00	3000	C203	29	47	40	134	85	100	35	25	6	1.37
700 055 00	4000	C204	34	57.5	50	180	113	128	42	37	6	2.86
700 056 00	5000	C205	38	55.5	56	187	113	133	44	39	6	3.2
700 057 00	6000	C206	38	59	60	200	123	141	50	40	8	3.64
700 058 00	8000	C208	44	74.5	67.5	252	153	170	60	45	8	7.2
700 151 00	10000	C210	44	67	68	262	160	170	65	49	8	7.42
700 059 00	18000	C218	54	75	75	290	178	186	80	49	10	10.93

PEJO

Applied norm EN 474-1

Weld-On Bucket Hook Type U (U series)



Product Number	WLL kg	Size	Dimensions								Weight kg
			B1 mm	M mm	L mm	L1 mm	H mm	B mm	Ø D1 mm	A mm	
700 060 00	500	U200	20	18	95	87	63	23	20	4	0.44
700 061 00	1000	U201	21	22	105	99	75	25	23	4	0.59
700 062 00	2000	U202	23	29	123	109	86	30	27	4	1.03
700 063 00	3000	U203	29	30	145	133	101	35	31	6	1.92
700 064 00	4000	U204	30	32	152	142	107	35	31	6	2.09
700 065 00	6000	U206	35.5	45	205	185	127	40	40	8	3.77
700 066 00	8000	U208	40	46.5	216	205	139	50	40	8	5.33

Applied norm EN 474-1


PEJO



Dublin

D24 XF6T
+353 (0) 1 885 5333

Rathnew

A67 XN36
+353 (0) 1 885 5333

Belfast

BT36 4TY
+44 (0) 28 9083 1780

Wexford

Y35 YP7N
+353 (0) 53 918 3990

Cork

T12 YE10
+353 (021) 431 1614

London

DA8 1DG
+44 20 7476 0793

Berkshire

RG7 4PW
+44 (0) 118 981 1773

Bristol

GL12 8JB
+44 (0) 1454 332270

Plymouth

PL1 4RW
+44 (0) 1752 418027

Southampton

SO53 4DR
+44 (0) 23 8200 1436

Yeovil

BA20 2YB
+44 (0) 1935 704076

