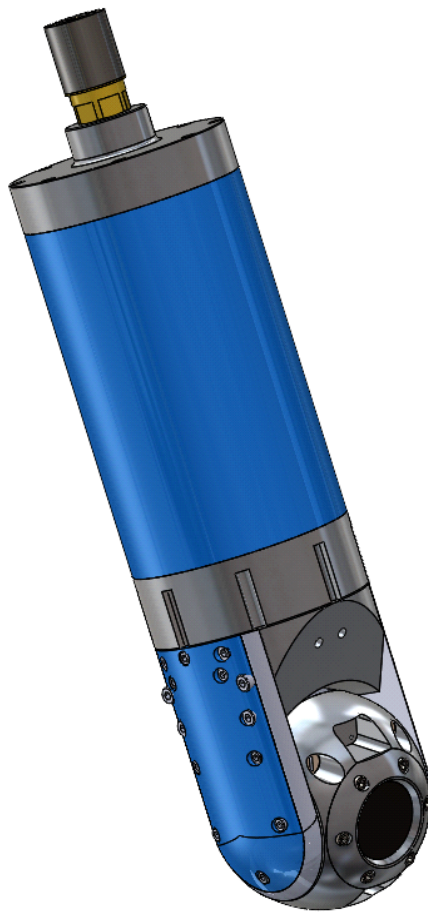


Driemtech DT-90HD Camera



Compact Design

Full HD watertight camera with pan, tilt and zoom functions.

The DT-90HD is perfectly suited to a wide range of visual inspections including subsea structures, nuclear power installations, and pipelines.

Spectis⁺
Robotics

Robust and compact Stainless Steel & anodised aluminium design

Full HD camera for detailed images

10x optical / 32x digital zoom function

Pan and tilt function including slipping clutch

Watertight up to 60m

Automatic or manual focus

Automatic or manual exposure

Specification

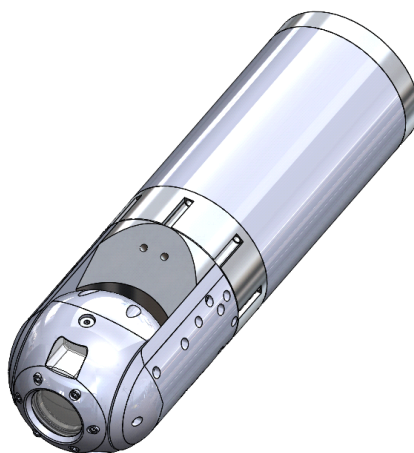
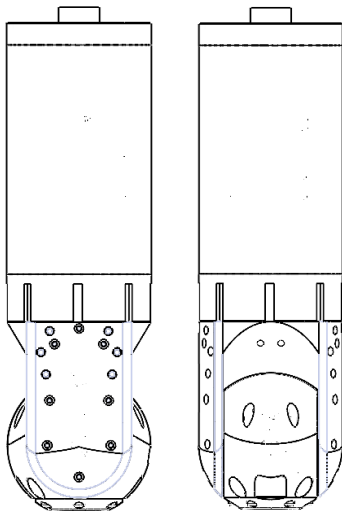
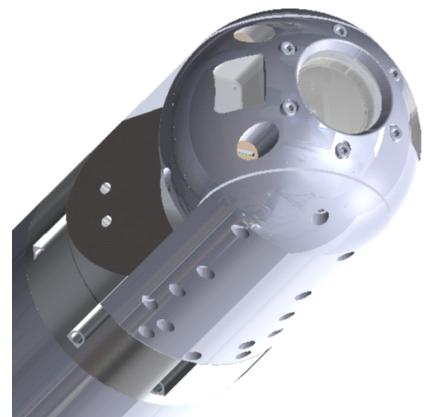
- > Image sensor: 1080p/30fps
- > Video output: HD-SDI
- > Resolution (H x V): 1920 x 1080
- > Minimum illumination: 0.01 Lux
- > Field of view: 68° (wide) to 6.7° (tele)
- > Focal length: 5.1mm to 51mm
- > Focus: automatic or manual
- > Tilt range: 270° (± 135°)
- > Pan range: Continuous 360°
- > LED Lighting: 40 W
- > Housing: Anodised Aluminium and Stainless Steel
- > Dimensions: 90 mm x 295 mm
- > Weight: 3kgs
- > Depth rating: 6 bar/60m

Applications

- > All underwater inspections and monitoring applications in hard to reach areas.
- > Nuclear applications (refuelling - offloading- maintenance)
- > Industrial applications (offshore or deep well inspections)
- > Decommissioning applications (pipe and tank inspections)

Accessories

- Carbon Fibre deployment poles
- 50m or 100m tether lengths.
- Cable Reel
- Peli Case Controller with 12" monitor and integrated DVR



Images shown may not be an exact representation of the features listed.

Spectis Robotics Ltd
Unit 3, Crombie House, Grandholm Village
Bridge of Don, Aberdeen, Scotland, AB22 8BD

+44 1224 701444
info@spectisrobotics.com
spectisrobotics.com

World-leading
Robotic Crawlers and
Camera Systems