



PRODUCT CATALOGUE 2025.

FOUR LAYERS. ONE SOLUTION.

Each dynamic layer of FireBear perfectly balances stylish designs with the highest levels of protection against arc flash.



01 Base Layer.	04
02 Mid Layer.	14
03 Outer Layer.	46
04 Waterproof.	76

SAFETY IN STYLE.

01 Base Layer.

Our base layer helps you maintain a steady body temperature for improved comfort. It brings added protection when worn with the mid-layer garments.





FR & Arc Ladies Long Johns

The latest in ladies thermal PPE and workwear, our 7.3 Cal protection FR & Arc flash long johns are designed to combine a corporate uniform image, with optimum levels of comfort and safety.

Using FireBear Weave interlocked fabric with Bear Flexi Stretch, this base layer is ideal for highly active tasks that require unrestricted movement and flexibility in the coldest of conditions.



Product Highlights



SAFETY IN STYLE.

Product Features



Stretchable waist



Elasticated cuffs

SKU: C21.FB101F



Feature Details

Stretchable waist

One of the most important features of a long john base layer is flexibility at the waist. This not only make it more comfortable to wear but improves product life.

Super soft fabric

Ultra lightweight Bear Soft Weave fabric delivers complete freedom of movement and unrestricted flexibility to maximise task performance.

Elasticated cuffs

Our long johns feature elasticated ankle cuffs to prevent cold air rising up the leg whilst moving around, especially useful during the winter months.



Fabric Specifications & Standards

Fabric: 215 gm2: 59% Protex, 37% Cotton, 2% Beltron, 2% Elastane



IEC 61482
Electric Arc



EN 1149
Anti-static



EN ISO 11612
Flame resistant

SKU: C21.FB101F



FR & Arc Ladies Thermal Undershirt

The latest in PPE and workwear, our 7.3 Cal FR & Arc flash thermal undershirts are made from Bear Flexi stretch fabric to ensure workers enjoy both flexibility and comfort whilst performing tasks.

Proudly showing the FireBear logo on the neck, our thermal undershirt base layer uses our highly protective but lightweight Bear Soft Weave, making it ideal for working in winter conditions.



Product Highlights



7.3 CAL



SOFT WEAVE



FLEXI STRETCH



ANTI-STATIC



SIZES 8 - 18

SAFETY IN STYLE.

Product Features



Crew neck



Thumb loop



FireBear Branded

SKU: C21.FB112F



Feature Details

Crew Neck

Our crew neck design sits comfortably along the collarbone to deliver improved protection and warmth against the winter elements outdoors.

Thumb Loop

Thumb loops keep your sleeves in place whilst working. This not only improves comfort but protects your garment layering in high-risk environments.



Superior Comfort

Ultra lightweight Bear Soft Weave fabric delivers complete freedom of movement and unrestricted flexibility to maximise task performance.

FireBear Branding

Proudly wearing the FireBear logo not only exudes a level of corporate professionalism, but also acts as a symbol of enhanced safety in the workplace.

Fabric Specifications & Standards

Fabric: 215 gm2: 59% Protex, 37% Cotton, 2 % Beltron, 2 % Elastane



IEC 61482
Electric Arc



EN 1149
Anti-static



EN ISO 11612
Flame resistant

SKU: C21.FB112F



FR & Arc Thermal Undershirt

The latest in PPE and workwear, our 12 Cal FR & Arc flash thermal undershirts are made from Bear Flexi stretch fabric to ensure workers enjoy both flexibility and comfort whilst performing tasks.

Proudly showing the FireBear logo on the neck, our thermal undershirt base layer uses our highly protective but lightweight Bear Soft Weave, making it ideal for working in winter conditions.



Product Highlights



SAFETY IN STYLE.

Product Features



Crew neck



Thumb loop



FireBear Branded

SKU: C21.FB113



Feature Details

Crew Neck

Our crew neck design sits comfortably along the collarbone to deliver improved protection and warmth against the winter elements outdoors.

Thumb Loop

Thumb loops keep your sleeves in place whilst working. This not only improves comfort but protects your garment layering in high-risk environments.



Superior Comfort

Ultra lightweight Bear Soft Weave fabric delivers complete freedom of movement and unrestricted flexibility to maximise task performance.

FireBear Branding

Proudly wearing the FireBear logo not only exudes a level of corporate professionalism, but also acts as a symbol of enhanced safety in the workplace.

Fabric Specifications & Standards

Fabric: 55% Modacrylic, 40% Cotton, 4% Elastane, 1% Nylon, 250gsm



IEC 61482

Electric Arc



EN 1149

Anti-static



EN ISO 11612

Flame resistant

SKU: C21.FB113



FR & Arc Long Johns

The latest in thermal PPE and workwear, our 12 Cal protection FR & Arc flash long johns are designed to combine a corporate uniform image, with optimum levels of comfort and safety.

Using FireBear Weave interlocked fabric with Bear Flexi Stretch, this base layer is ideal for highly active tasks that require unrestricted movement and flexibility in the coldest of conditions.



Product Highlights



SAFETY IN STYLE.

Product Features



Stretchable waist



Elasticated cuffs



Easy access fly

SKU: C21.FB115



Feature Details

Stretchable waist

One of the most important features of a long john base layer is flexibility at the waist. This not only make it more comfortable to wear but improves product life.

Super soft fabric

Ultra lightweight Bear Soft Weave fabric delivers complete freedom of movement and unrestricted flexibility to maximise task performance.



Elasticated cuffs

Our long johns feature elasticated ankle cuffs to prevent cold air rising up the leg whilst moving around, especially useful during the winter months.

Fabric Specifications & Standards

Fabric: 55% Modacrylic, 40% Cotton, 4% Elastane, 1% Nylon, 250gsm



IEC 61482
Electric Arc



EN 1149
Anti-static



EN ISO 11612
Flame resistant

SKU: C21.FB115



02 Mid Layer.

Our mid-layer combines quality and cutting-edge design to ensure the highest levels of protection and durability for the toughest jobs.





FR & Arc Class 1 Ladies Cargo Trousers

For the latest in ladies lightweight and tough FR & Arc workwear, our Class 1 cargo trousers deliver exceptional flexibility, accessibility, and durability in harsh environments.

A feature-rich and considered mid layer ensures you have access to everything you need whilst working, without compromising on your safety and comfort whilst performing tasks.



Product Highlights



SAFETY IN STYLE.

Product Features



Elasticated waist



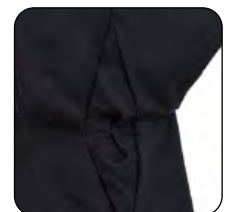
Articulated knee & kneepad pocket



Back pockets



Leg pockets



Flexi-Gusset crotch

SKU: C21.FB211F



Feature Details

Stretchable waist

One of the most important features of a long john base layer is flexibility at the waist. This not only make it more comfortable to wear but improves product life.

Articulated knee pockets

Experience elite levels of mobility and access with our articulated knees and cargo kneepad pockets accessible from the inside of the trousers.

Back pockets

Our hard-wearing back pockets are durable, highly practical, and can easily carry several items at once without tearing the fabric or falling out.

Flex-gusset crotch

Our cargo trouser flex-gusset crotch is designed to maximise mobility and always increase the range of leg motion available to the wearer.

Leg pockets

Our leg pockets include standard markings and form a key part of our trouser design with a durable yet hand-friendly place to keep key items for working.



Fabric Specifications & Standards

Fabric: 245 gm2 : 54% Protex, 44% Cotton, 2% Negastat



EC 61482-1-2-2007

Electric Arc



EN 1149

Anti-static



EN ISO 11612

Flame resistant

SKU: C21.FB211F



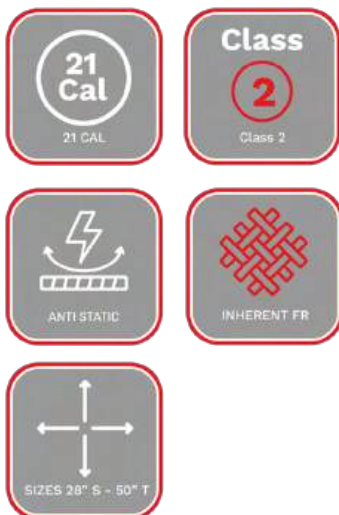
FR & Arc Class 2 Cargo Trousers

For the lightest but toughest FR & Arc protection, our ladies Class 2 cargo trousers are designed to deliver exceptional flexibility, accessibility, and durability in harsh environments.

A feature-rich and considered mid layer ensures you have access to everything you need whilst working, without compromising on your safety and comfort whilst performing tasks.



Product Highlights



SAFETY IN STYLE.

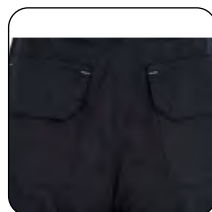
Product Features



Elasticated waist



Articulated knee & kneepad pocket



Back pockets



Leg pockets



Flexi-Gusset crotch

SKU: C21.FB212F



Feature Details

Stretchable waist

One of the most important features of a long john base layer is flexibility at the waist. This not only make it more comfortable to wear but improves product life.

Back pockets

Our hard-wearing back pockets are durable, highly practical, and can easily carry several items at once without tearing the fabric or falling out.

Flex-gusset crotch

Our cargo trouser flex-gusset crotch is designed to maximise mobility and always increase the range of leg motion available to the wearer.

Leg pockets

Our leg pockets include standard markings and form a key part of our trouser design with a durable yet hand-friendly place to keep key items for working.

Articulated knee pockets

Experience elite levels of mobility and access with our articulated knees and cargo kneepad pockets accessible from the inside of the trousers.



Fabric Specifications & Standards

Fabric: 2 Layers - 245 gm² : 54% Protex, 44% Cotton, 2% Negastat



EC 61482-1-2-2007

Electric Arc



EN 1149

Anti-static



EN ISO 11612

Flame resistant

SKU: C21.FB212F



FR & Arc Class 2 Cargo Trousers

For the lightest but toughest FR & Arc protection, our Class 2 cargo trousers are designed to deliver exceptional flexibility, accessibility, and durability in harsh environments.

A feature-rich and considered mid layer ensures you have access to everything you need whilst working, without compromising on your safety and comfort whilst performing tasks.



Product Highlights



SAFETY IN STYLE.

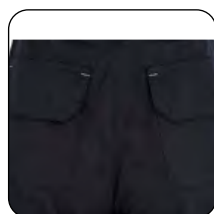
Product Features



Elasticated waist



Articulated knee & kneepad pocket



Back pockets



Leg pockets



Flexi-Gusset crotch

SKU: C21.FB212



Feature Details

Stretchable waist

One of the most important features of a long john base layer is flexibility at the waist. This not only make it more comfortable to wear but improves product life.

Articulated knee pockets

Experience elite levels of mobility and access with our articulated knees and cargo kneepad pockets accessible from the inside of the trousers.

Back pockets

Our hard-wearing back pockets are durable, highly practical, and can easily carry several items at once without tearing the fabric or falling out.

Flex-gusset crotch

Our cargo trouser flex-gusset crotch is designed to maximise mobility and always increase the range of leg motion available to the wearer.

Leg pockets

Our leg pockets include standard markings and form a key part of our trouser design with a durable yet hand-friendly place to keep key items for working.



Fabric Specifications & Standards

Fabric: 2 Layers - 245 gm2 : 54% Protex, 44% Cotton, 2% Negastat



EC 61482-1-2-2007

Electric Arc



EN 1149

Anti-static



EN ISO 11612

Flame resistant

SKU: C21.FB212



FR & Arc Ladies Long Sleeve Hi vis T-Shirt

The latest in ladies PPE and workwear, our 5 Cal protection FR & Arc flash two-tone long sleeve hi-vis t-shirt features reflective shoulders and a high collar for advanced protection.

Using FireBear Weave interlocked fabric with Bear Flexi Stretch, this base layer is ideal for highly active tasks that require unrestricted movement and flexibility in the coldest of conditions.



Product Highlights



SAFETY IN STYLE.

Product Features



Crew neck



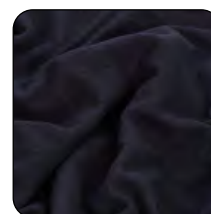
Thumb loop



FireBear branded



Iconography



Superior comfort

SKU: C21.FB241F



Feature Details

Crew Neck

Our crew neck design sits comfortably along the collarbone to deliver improved protection and warmth against the winter elements outdoors.

Thumb Loop

Thumb loops keep your sleeves in place whilst working. This not only improves comfort but protects your garment layering in high-risk environments.



Superior Comfort

Ultra lightweight Bear Soft Weave fabric delivers complete freedom of movement and unrestricted flexibility to maximise task performance.

FireBear Branding

Proudly wearing the FireBear logo not only exudes a level of corporate professionalism, but also acts as a symbol of enhanced safety in the workplace.

Fabric Specifications & Standards

Fabric: 210 gm²: 60% Protex, 38% Cotton, 2 % Metal Compound



EC 61482-1-2-2007

Electric Arc



EN 1149

Anti-static



EN ISO 11612

Flame resistant



EN ISO 14116

Flame spread

SKU: C21.FB241F



FR & Arc Class 1 Long Sleeve T-Shirt

Our most advanced FR & Arc t-shirt design includes key features and materials that make it the ultimate mid layer to wear in all conditions and to perform all tasks.

Comfortable and lightweight, this T-shirt sets a new benchmark for agile and unrestrictive workwear.



Product Highlights



SAFETY IN STYLE.

Product Features



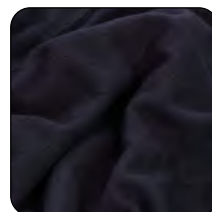
Raglan Sleeve



Thumb loop



Scooped back



Superior comfort

SKU: C21.FB241



Feature Details

Raglan Sleeve

This design feature intelligently delivers complete freedom of movement due to the extra space created by the shape of the sleeve.

Thumb Loop

Thumb loops keep your sleeves in place whilst working. This not only improves comfort but protects your garment layering in high-risk environments.



Superior Comfort

Ultra lightweight Bear Soft Weave fabric delivers complete freedom of movement and unrestricted flexibility to maximise task performance.

Scooped back

The scooped back design of our tops prevents the garment from becoming untucked or riding up and letting cold air in when bending over.

Fabric Specifications & Standards

Fabric: 220 gm2 : 60% Modacrylic, 38% Cotton, 2% AS



IEC 61482-1-2-2007

Electric Arc



EN 1149

Anti-static



EN ISO 11612

Flame resistant



EN ISO 14116

Flame Spread

SKU: C21.FB241



FR & Arc Ladies Class 1 Long Sleeved Polo Shirt

The latest in ladies PPE and workwear, 5 Cal Class 1 Arc long sleeved polo shirts feature a contrast colour ribbed collar for extended soiling protection, along with moisture management technology.

Tailored specifically for your female workforce, the shirt includes intelligent design features such as chevron technology, a ¼ zip, and comfortable thumb loops in the sleeves.



Product Highlights



SAFETY IN STYLE.

Product Features



Chevron Technology



Standards embroidered



1/4 zip



Thumb loop

SKU: C21.FB249F



Feature Details

¼ zip

Garments that use our ¼ zip closure design benefit from easier ventilation, making it an essential feature when working in warm summer conditions.

Thumb Loop

Thumb loops keep your sleeves in place whilst working. This not only improves comfort but protects your garment layering in high-risk environments.



Standard markings

We believe you should be proud to wear your safety standards on your sleeve with our highly visible iconography in navy on a yellow background.

Chevron technology

Our chevron technology uses smart diagonal reflective tape to wrap around the body and arms to provide a higher level of style and safety for the wearer.

Fabric Specifications & Standards

Fabric: 210gm² : 66% Protex, 38% Cotton, 2% Metal Compound



IEC 61482
Electric Arc



EN 1149
Anti-static



EN ISO 11612
Flame resistant



EN ISO 14116
Flame spread



EN 20471
Hi-vis



RIS-3279-TOM
Rail (Orange only)

SKU: C21.FB249F



FR & Arc Jersey Raglan Polo Shirt Class 1

The latest in PPE and workwear, our 5 Cal Class 1 protection FR & Arc flash ladies jersey raglan polo shirt is made from a lightweight and highly breathable fabric for extra comfort in warm conditions.

The shirt is tailored for your female workforce with extra features for safety, comfort and control in the workplace including a raglan sleeve and thumb loops to keep them in place.



Product Highlights



SAFETY IN STYLE.

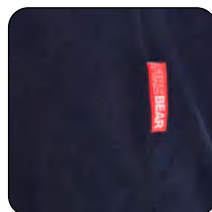
Product Features



Raglan Sleeve



Thumb loop



FireBear branding

SKU: C21.FB253F



Feature Details



Raglan Sleeve

This design feature intelligently delivers complete freedom of movement due to the extra space created by the shape of the sleeve.

Thumb Loop

Thumb loops keep your sleeves in place whilst working. This not only improves comfort but protects your garment layering in high-risk environments.

Superior Comfort

Ultra lightweight Bear Soft Weave fabric delivers complete freedom of movement and unrestricted flexibility to maximise task performance.

Scooped back

The scooped back design of our tops prevents the garment from becoming untucked or riding up and letting cold air in when bending over.

Fabric Specifications & Standards

Fabric: 210 gm²: 60% Protex, 38% Cotton, 2 % Metal Compound



EC 61482-1-2-2007

Electric Arc



EN 1149

Anti-static



EN ISO 11612

Flame resistant

SKU: C21.FB253F



FR & Arc Class 1 Long Sleeved Polo

The latest in PPE and workwear, our 12 Cal protection FR & Arc long sleeved polos are designed to combine a corporate uniform image, with optimum levels of comfort and safety.

Using our unique FireBear Weave interlocked fabric with Bear Flexi Stretch, this shirt is ideal for highly active tasks that require unrestricted movement and flexibility in the coldest of conditions.



Product Highlights



SAFETY IN STYLE.

Product Features



Scoop back



Standard markings



FireBear branded



Thumb loop

SKU: C21.FB259



Feature Details



FireBear branding

Proudly wearing the FireBear logo not only exudes a level of corporate professionalism, but also acts as a symbol of enhanced safety in the workplace.

Thumb Loop

Thumb loops keep your sleeves in place whilst working. This not only improves comfort but protects your garment layering in high-risk environments.

Standard markings

We believe you should be proud to wear your safety standards on your sleeve with our highly visible iconography in green on a navy background.

Scooped back

The scooped back design of our tops prevents the garment from becoming untucked or riding up and letting cold air in when bending over.

Fabric Specifications & Standards

Fabric: 220 gm2 : 60% Modacrylic, 38% Cotton, 2% AS



IEC 61482-1-2-2007

Electric Arc



EN 1149

Anti-static



EN ISO 11612

Flame resistant



EN ISO 14116

Flame Spread

SKU: C21.FB259



FR & Arc Ladies Class 1 Long Sleeved Hi-Vis Polo

The latest in ladies PPE and workwear, our FR & Arc flash long sleeved i-vis polo feature a contrast colour ribbed collar for extended soiling protection, along with moisture management technology.

This polo includes intelligent design and safety features such as chevron technology, a ¼ zip, comfortable thumb loops in the sleeves, and standard markings.



Product Highlights



SAFETY IN STYLE.

Product Features



Chevron Technology



Standards Markings



FireBear Branded



Thumb Loop

SKU: C21.FB263F



Feature Details

FireBear branding

Proudly wearing the FireBear logo not only exudes a level of corporate professionalism, but also acts as a symbol of enhanced safety in the workplace.

Thump Loop

Thumb loops keep your sleeves in place whilst working. This not only improves comfort but protects your garment layering in high-risk environments.



Standard Markings

We believe you should be proud to wear your safety standards on your sleeve with our highly visible iconography in green on an orange background.

Lightweight Fabric
Jersey knit 210gm² fabric.

Chevron Technology

Our chevron technology uses smart diagonal reflective tape to wrap around the body and arms to provide a higher level of style and safety for the wearer.

Fabric Specifications & Standards

Fabric: 210gm² : 66% Protal 3, 32% Polyester, 2% Carbon



IEC 61482
Electric Arc



EN 1149
Anti-static



EN ISO 11612
Flame resistant



EN ISO 14116
Flame spread



EN 20471
Hi-vis



RIS-3279-TOM
Rail (Orange only)

SKU: C21.FB263F



FR & Arc Class 1 Lightweight Hi-Vis Polo

The latest in PPE and workwear, our 5 Cal Class 1 Arc flash long sleeved hi-vis polo feature a contrast colour ribbed collar for extended soiling protection, along with moisture management technology.

This polo includes intelligent design and safety features such as chevron technology, comfortable thumb loops in the sleeves, and standard markings.



Product Highlights



SAFETY IN STYLE.

Product Features



Chevron technology



Standards markings



FireBear branded



Thumb loop

SKU: C21.FB263



Feature Details

FireBear branding

Proudly wearing the FireBear logo not only exudes a level of corporate professionalism, but also acts as a symbol of enhanced safety in the workplace.

Thump Loop

Thumb loops keep your sleeves in place whilst working. This not only improves comfort but protects your garment layering in high-risk environments.



Standard Markings

We believe you should be proud to wear your safety standards on your sleeve with our highly visible iconography in green on an orange background.

Lightweight Fabric

Jersey knit 210gm² fabric.

Chevron Technology

Our chevron technology uses smart diagonal reflective tape to wrap around the body and arms to provide a higher level of style and safety for the wearer.

Fabric Specifications & Standards

Fabric: 210gm² : 66% Protal 3, 32% Polyester, 2% Carbon



IEC 61482
Electric Arc



EN 1149
Anti-static



EN ISO 11612
Flame resistant



EN 20471
Hi-vis



RIS-3279-TOM
Rail (Orange only)

SKU: C21.FB263



FR & Arc Class 1 Lightweight Hi-Vis Polo

The latest in PPE and workwear, our 5 Cal Class 1 Arc flash long sleeved hi-vis polo feature a contrast colour ribbed collar for extended soiling protection, along with moisture management technology.

This polo includes intelligent design and safety features such as chevron technology, comfortable thumb loops in the sleeves, and standard markings.



Product Highlights



SAFETY IN STYLE.

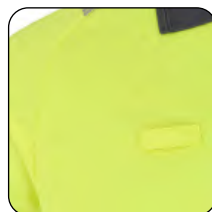
Product Features



Chevron technology



Standards markings



PAM loop



Thumb loop

SKU: C21.FB263-SY



Feature Details

PAM Loop

PAM radio loop provides a handy way to hang your radio or gas detector.

Standard Markings

We believe you should be proud to wear your safety standards on your sleeve with our highly visible iconography in green on a yellow background.

Lightweight Fabric

Jersey knit 210gm² fabric.

Thumb Loop

Thumb loops keep your sleeves in place whilst working. This not only improves comfort but protects your garment layering in high-risk environments.

Chevron Technology

Our chevron technology uses smart diagonal reflective tape to wrap around the body and arms to provide a higher level of style and safety for the wearer.



Fabric Specifications & Standards

Fabric: 210gm² : 66% Protal 3, 32% Polyester, 2% Carbon



IEC 61482
Electric Arc



EN 1149
Anti-static



EN ISO 11612
Flame resistant



EN 20471
Hi-vis

SKU: C21.FB263-SY



FR & Arc Class 1 Ladies Zip Neck Sweatshirt

The latest in ladies PPE and workwear, our 14.4 Class 1 protection FR & Arc flash zip neck sweatshirts are made from premium quality fabric to ensure workers are comfortable whilst performing their tasks.

Using fully certified inherent FR Class protection combined with highly breathable fabric, this mid layer is ideal for highly active tasks that require unrestricted movement and flexibility.



Product Highlights



SAFETY IN STYLE.

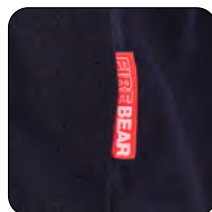
Product Features



Zipped Neck



Thumb Loop



FireBear
Branded

SKU: C21.FB294F



Feature Details

FireBear branding

Proudly wearing the FireBear logo not only exudes a level of corporate professionalism, but also acts as a symbol of enhanced safety in the workplace.

Zipped Neck

With a zip neck, we've designed this garment to be extremely practical and comfortable when working, especially when made from our softer premium fabrics.

Thumb Loop

Thumb loops keep your sleeves in place whilst working. This not only improves comfort but protects your garment layering in high-risk environments.



Fabric Specifications & Standards

Fabric: 300 gm²: 60% Protex, 39% Cotton, 1 % Beltron



IEC 61482-1-2-2007

Electric Arc



EN 1149

Anti-static



EN ISO 11612

Flame resistant

SKU: C21.FB294F



FR & Arc Class 1 Ladies Sweatshirt

The latest in ladies PPE and workwear, our 14.4 Cal Class 1 protection FR & Arc flash sweatshirts are made from premium quality fabric to ensure workers are comfortable whilst performing their tasks.

Using fully certified inherent FR Class protection combined with highly breathable fabric, this mid layer is ideal for highly active tasks that require unrestricted movement and flexibility.



Product Highlights



SAFETY IN STYLE.

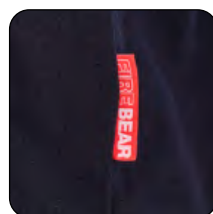
Product Features



Standard Markings



Raglan Sleeve



FireBear Branded

SKU: C21.FB295F



Feature Details

Raglan Sleeve

This design feature intelligently delivers complete freedom of movement due to the extra space created by the shape of the sleeve.

FireBear branding

Proudly wearing the FireBear logo not only exudes a level of corporate professionalism, but also acts as a symbol of enhanced safety in the workplace.



Standard markings

We believe you should be proud to wear your safety standards on your sleeve with our highly visible iconography in green on a navy background.

Fabric Specifications & Standards

Fabric: 300 gm2: 59% Protex, 39% Cotton, 2% Carbon Fibre Antistatic



EC 61482-1-2-2007

Electric Arc



EN 1149

Anti-static



EN ISO 11612

Flame resistant

SKU: C21.FB295F



FR & Arc Class 1 Sweatshirt

The latest in PPE and workwear, our 20 Cal protection FR & Arc flash sweatshirts are made from ultra lightweight but highly protective fabric to ensure workers remain exceptionally safe and comfortable.

Using FireBear Weave interlocked fabric, this mid layer is a favourite among utility contractors and companies and is ideal for highly active tasks that require unrestricted movement and flexibility.



Product Highlights

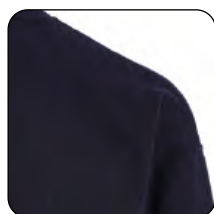


SAFETY IN STYLE.

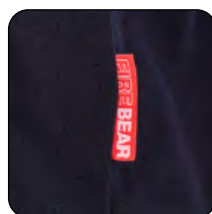
Product Features



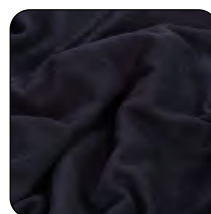
Standards Markings



Raglan Sleeve



FireBear Branded



Brushed Fabric

SKU: C21.FB298



Feature Details

Raglan Sleeve

This design feature intelligently delivers complete freedom of movement due to the extra space created by the shape of the sleeve.

FireBear branding

Proudly wearing the FireBear logo not only exudes a level of corporate professionalism, but also acts as a symbol of enhanced safety in the workplace.



Standard markings

We believe you should be proud to wear your safety standards on your sleeve with our highly visible iconography in green on a navy background.

Brushed Fabric

Our brushed fabric undergoes a process where brushes are rubbed on the surface to pull up and raise the very softest fibres from the yarns, giving a fuzzier and extra-soft texture to the garment.

Fabric Specifications & Standards

Fabric: 300 gm2: 54% Protex, 44% Cotton, 2% Negastat



IEC 61482
Electric Arc



EN 1149
Anti-static



EN ISO 11612
Flame resistant

SKU: C21.FB298



FR & Arc Class 1 Hooded Sweatshirt

The latest in PPE and workwear, our 20 Cal protection FR & Arc flash Hooded sweatshirts are made from lightweight but highly protective fabric to ensure workers remain safe and comfortable.

Using FireBear Weave interlocked fabric, this mid layer is a favourite among utility contractors and companies and is ideal for highly active tasks that require unrestricted movement and flexibility.



Product Highlights

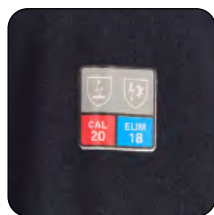


SAFETY IN STYLE.

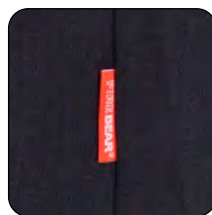
Product Features



Scooped Back



Standard Markings



FireBear Branded



Thumb Loop

SKU: C21.FB299



Feature Details

FireBear branding

Proudly wearing the FireBear logo not only exudes a level of corporate professionalism, but also acts as a symbol of enhanced safety in the workplace.

Standard Markings

We believe you should be proud to wear your safety standards on your sleeve with our highly visible iconography in green on a navy background.



Scooped Back

The scooped back design of our t-shirts prevents the garment from becoming untucked or riding up and letting cold air in when bending over.

Thumb Loop

Thumb loops keep your sleeves in place whilst working. This not only improves comfort but protects your garment layering in high-risk environments.

Fabric Specifications & Standards

Fabric: 300 gm2: 54% Protex, 44% Cotton, 2% Negastat



IEC 61482
Electric Arc



EN 1149
Anti-static



EN ISO 11612
Flame resistant

SKU: C21.FB299



03 Outer Layer.

When the elements are attacking, our outer layer garments keep you dry, warm, and safe - for peak performance in all temperatures.





FR & Arc Ladies Class 1 Ladies Hi-Vis Boiler Suit

The latest in ladies PPE and workwear, our 10.5 Cal Class 1 FR & Arc hi vis coveralls provide unrivalled levels of flexibility and protection, whilst delivering all the features for maximum accessibility whilst working.

The two tone Hi-Vis and navy feature-rich design includes large side pockets and openings, rear pockets, stand up collar, pam loops on chest, and covered chest pockets.



Product Highlights



SAFETY IN STYLE.

Product Features



Chevron Technology



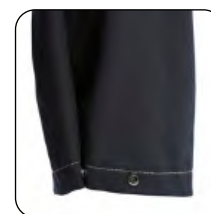
Double Breast Pockets & PAM Loops



Flexi-Gusset Ankle Cuffs



Multi Pocket



Popper Cuff Secure

SKU: C21.FB319F



Feature Details

Chevron Technology

Our chevron technology uses smart diagonal reflective tape to wrap around the body and arms to provide a higher level of style and safety for the wearer.

Popper Cuff Secure

We have provided popper cuffs on our garments to provide maximum levels of adjustability for added safety, and additional access to watches and other wearable technology.



Double Breast Pockets & PAM Loops

The double breast pocket ensures there is always room for your work items to be stored and accessed, and the PAM radio loop provides a handy way to hang your radio or gas detectors.

Multi Pocket

Pockets are a vital feature on the outer layers of FR & Arc flash workwear and PPE, and our coveralls and boiler suits provide multiple pockets that are easy to find, access, and close.

Full-Gusset Ankle Cuffs

Our flexi-gusset ankle cuffs are designed to maximise mobility and consistently increase the range of leg motion available to the wearer whilst working.

Fabric Specifications & Standards

Fabric: 245 gm2 : 54% Protex, 44% Cotton, 2% Negastat



IEC 61482-2
Electric Arc



EN 1149
Anti-static



EN ISO 11612
Flame resistant



EN ISO 20471
High visibility

SKU: C21.FB319F



FR & Arc Class 1 Hi-Vis Boiler Suit

The latest in PPE and workwear, our 10.5 Cal Class 1 FR & Arc hi vis coveralls provide unrivalled levels of flexibility and protection, whilst delivering all the features for maximum accessibility whilst working.

The two tone Hi-Vis and navy feature-rich design includes large side pockets and openings, rear pockets, stand up collar, pam loops on chest, and covered chest pockets.



Product Highlights



SAFETY IN STYLE.

Product Features



Chevron Technology



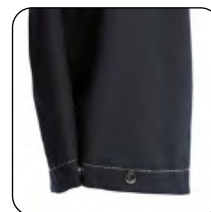
Double Breast Pockets & PAM Loops



Flexi-Gusset Ankle Cuffs



Multi Pocket



Popper Cuff Secure

SKU: C21.FB319



Feature Details

Chevron Technology

Our chevron technology uses smart diagonal reflective tape to wrap around the body and arms to provide a higher level of style and safety for the wearer.

Popper Cuff Secure

We have provided popper cuffs on our garments to provide maximum levels of adjustability for added safety, and additional access to watches and other wearable technology.



Double Breast Pockets & PAM Loops

The double breast pocket ensures there is always room for your work items to be stored and accessed, and the PAM radio loop provides a handy way to hang your radio or gas detectors.

Multi Pocket

Pockets are a vital feature on the outer layers of FR & Arc flash workwear and PPE, and our coveralls and boiler suits provide multiple pockets that are easy to find, access, and close.

Full-Gusset Ankle Cuffs

Our flexi-gusset ankle cuffs are designed to maximise mobility and consistently increase the range of leg motion available to the wearer whilst working.

Fabric Specifications & Standards

Fabric: 245 gm²: 54% Protex, 44% Cotton, 2% Negastat



IEC 61482-2
Electric Arc



EN 1149
Anti-static



EN ISO 11612
Flame resistant



EN ISO 20471
High visibility

SKU: C21.FB319



FR & Arc Class 2 Hi-Vis Boiler Suit

The latest in ladies PPE and workwear, our Class 2 FR & Arc hi vis coveralls provide unrivalled levels of flexibility and protection, whilst delivering all the features for maximum accessibility whilst working.

The two tone hi-vis and navy feature-rich design includes large side pockets and openings, rear pockets, stand up collar, pam loops on chest, and covered chest pockets.



Product Highlights



SAFETY IN STYLE.

Product Features



Chevron Technology



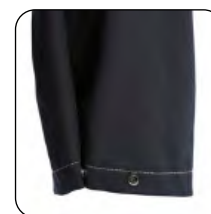
Double Breast Pockets & PAM Loops



Flexi-Gusset Ankle Cuffs



Multi Pocket



Popper Cuff Secure

SKU: C21.FB329F



Feature Details

Chevron Technology

Our chevron technology uses smart diagonal reflective tape to wrap around the body and arms to provide a higher level of style and safety for the wearer.

Popper Cuff Secure

We have provided popper cuffs on our garments to provide maximum levels of adjustability for added safety, and additional access to watches and other wearable technology.



Double Breast Pockets & PAM Loops

The double breast pocket ensures there is always room for your work items to be stored and accessed, and the PAM radio loop provides a handy way to hang your radio or gas detectors.

Multi Pocket

Pockets are a vital feature on the outer layers of FR & Arc flash workwear and PPE, and our coveralls and boiler suits provide multiple pockets that are easy to find, access, and close.

Full-Gusset Ankle Cuffs

Our flexi-gusset ankle cuffs are designed to maximise mobility and consistently increase the range of leg motion available to the wearer whilst working.

Fabric Specifications & Standards

Fabric: 2 Layers - 245 gm² : 54% Protex, 44% Cotton, 2% Negastat



IEC 61482-1-2-2007

Electric Arc



EN 1149

Anti-static



EN ISO 11612

Flame resistant



EN ISO 14116

Flame Spread



EN ISO 20471

High visibility

SKU: C21.FB329F



FR & Arc Class 2 Hi-Vis Boiler Suit

The latest in PPE and workwear, our Class 2 FR & Arc hi vis coveralls provide unrivalled levels of flexibility and protection, whilst delivering all the features for maximum accessibility whilst working.

The two tone Hi-Vis and navy feature-rich design includes large side pockets and openings, rear pockets, stand up collar, pam loops on chest, and covered chest pockets.



Product Highlights



SAFETY IN STYLE.

Product Features



Chevron Technology



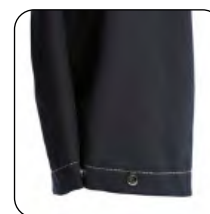
Double Breast Pockets & PAM Loops



Flexi-Gusset Ankle Cuffs



Multi Pocket



Popper Cuff Secure

SKU: C21.FB329



Feature Details

Chevron Technology

Our chevron technology uses smart diagonal reflective tape to wrap around the body and arms to provide a higher level of style and safety for the wearer.

Popper Cuff Secure

We have provided popper cuffs on our garments to provide maximum levels of adjustability for added safety, and additional access to watches and other wearable technology.



Double Breast Pockets & PAM Loops

The double breast pocket ensures there is always room for your work items to be stored and accessed, and the PAM radio loop provides a handy way to hang your radio or gas detectors.

Multi Pocket

Pockets are a vital feature on the outer layers of FR & Arc flash workwear and PPE, and our coveralls and boiler suits provide multiple pockets that are easy to find, access, and close.

Full-Gusset Ankle Cuffs

Our flexi-gusset ankle cuffs are designed to maximise mobility and consistently increase the range of leg motion available to the wearer whilst working.

Fabric Specifications & Standards

Fabric: 2 Layers - 245 gm2 : 54% Protex, 44% Cotton, 2% Negastat



IEC 61482-1-2-2007

Electric Arc



EN 1149

Anti-static



EN ISO 11612

Flame resistant



EN ISO 14116

Flame Spread



EN ISO 20471

High visibility

SKU: C21.FB329



FR & Arc Class 2 Hi-Vis Winter Boiler Suit

The latest in PPE and workwear, our Class 2 FR & Arc hi vis winter boiler suits provide high levels of flexibility and protection, whilst delivering all the features for maximum accessibility whilst working.

The two tone Hi-Vis and navy feature-rich design includes storm flaps, large side pockets and openings, rear pockets, stand up collar, pam loops on chest, and covered chest pockets.



Product Highlights



SAFETY IN STYLE.

Product Features



Storm Flap



Double Breast Pockets & PAM Loops



Flexi-Gusset Ankle Cuffs



Multi Pocket



Popper Cuff Secure

SKU: C21.FB335



Feature Details

Storm flap

A vital feature that provides an additional layer of protection against harsh weather conditions, such as wind and rain, by preventing moisture from penetrating and providing insulation against the cold.

Popper Cuff Secure

We have provided popper cuffs on our garments to provide maximum levels of adjustability for added safety, and additional access to watches and other wearable technology.



Double Breast Pockets & PAM Loops

The double breast pocket ensures there is always room for your work items to be stored and accessed, and the PAM radio loop provides a handy way to hang your radio or gas detectors.

Multi Pocket

Pockets are a vital feature on the outer layers of FR & Arc flash workwear and PPE, and our coveralls and boiler suits provide multiple pockets that are easy to find, access, and close.

Full-Gusset Ankle Cuffs

Our flexi-gusset ankle cuffs are designed to maximise mobility and consistently increase the range of leg motion available to the wearer whilst working.

Fabric Specifications & Standards

Fabric: Marko AT240HV IR, Navy Marko AT240IR, Marko PX300AT C/20 Quilt



IEC 61482-1-2-2007

Electric Arc



EN 1149

Anti-static



EN ISO 11612

Flame resistant



EN ISO 14116

Flame Spread



EN ISO 20471

High visibility

SKU: C21.FB335



FR & Arc Class 1 Action Jacket

The latest innovation in PPE and workwear, our FR & Arc action jackets are made from our Bear Soft Weave ultra lightweight fabric whilst delivering unrivalled levels of 20 Cal arc flash protection.

Using our interlocked fabric with Bear Flexi Stretch, this jacket is ideal for highly active tasks and can be worn as an outer layer to achieve class 2, or as part of a 3 in 1 solution with FireBear waterproofs.



Product Highlights



SAFETY IN STYLE.

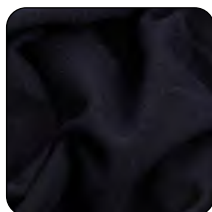
Product Features



Flexi-Gusset Technology



Raglan Sleeve



Brushed Fabric



Zipped Pockets



Elasticated Cuffs

SKU: C21.FB376



Feature Details

Raglan Sleeve

This design feature intelligently delivers complete freedom of movement due to the extra space created by the shape of the sleeve.

Brushed Fabric

Our brushed fabric undergoes a process where brushes are rubbed on the surface to pull up and raise the very softest fibres from the yarns, giving a fuzzier and extra-soft texture to the garment.

Elasticated Cuffs

Our long johns feature elasticated cuffs to prevent cold air rising up the leg whilst moving around, especially useful during the winter months.



Flex-Gusset Technology

Our flex-gusset technology is a valuable workwear feature designed to maximise mobility and increase the range of leg, arm, and body motion available to the wearer.

Zippered Pockets

Especially important for outer layers, our zippered pockets provide vital protection from rain, dust, humidity, and other pollutants for tools, instruments, valuables and work accessories.

Fabric Specifications & Standards

Fabric: 300 gm2: 54% Protex, 44% Cotton, 2% Negastat



IEC 61482

Electric Arc



EN 1149

Anti-static



EN ISO 11612

Flame resistant

SKU: C21.FB376



FR & Arc Class 2 Ladies Hi-Vis Softshell Jacket

The latest in ladies PPE and workwear, our 23Cal Class 2 FR & Arc flash hi vis softshell jackets are made from Protal® inherent FR fabric to remain exceptionally comfortable and safe whilst performing tasks.

The two tone hi-vis and navy feature-rich design includes concealed front zip, double loop, two lower front zip pockets, map pocket, and a pen pocket and cuff security on the sleeve.



Product Highlights



SAFETY IN STYLE.

Product Features



Chevron Technology



Storm flap



Standards Markings



Chest Pocket



Cuff Secure

SKU: C21.FB383F



Feature Details

Standard Markings

We believe you should be proud to wear your safety standards on your sleeve with our highly visible iconography in navy on a yellow background.

Chevron Technology

Our chevron technology uses smart diagonal reflective tape to wrap around the body and arms to provide a higher level of style and safety for the wearer.



Storm Flap

A vital feature that provides an additional layer of protection against harsh weather conditions, such as wind and rain, by preventing moisture from penetrating and providing insulation against the cold.

Chest Pocket

A zipped chest pocket is important for outer layers to provide vital protection from rain, dust, humidity, and other pollutants for tools, instruments, valuables, and work accessories.

Cuff Secure

We have provided cuff secure fastenings on our garments to provide maximum levels of adjustability for added safety, and additional access to watches and other wearable technology.

Fabric Specifications & Standards

Fabric: Outer - 55% Protex , 44% Cotton, 1% Negastat. PES Membrane. Protex/Cotton Fleece Backing



IEC 61482-2

Electric Arc



EN 1149-3

Anti-static



EN ISO 11612

Flame resistant



EN 343

Waterproof



EN ISO 20471

High visibility

SKU: C21.FB383F



FR & Arc Class 2 Hi-Vis Softshell Jacket

The latest in PPE and workwear, our 23Cal Class 2 FR & Arc flash hi vis softshell jackets are made from Protal® inherent FR fabric to remain exceptionally comfortable and safe whilst performing tasks.

The two tone hi-vis and navy feature-rich design includes concealed front zip, double loop, two lower front zip pockets, map pocket, and a pen pocket and cuff security on the sleeve.



Product Highlights



SAFETY IN STYLE.

Product Features



Chevron Technology



Storm flap



Standards Markings



Chest Pocket



Cuff Secure

SKU: C21.FB383



Feature Details

Standard Markings

We believe you should be proud to wear your safety standards on your sleeve with our highly visible iconography in navy on a yellow background.

Chest Pocket

A zipped chest pocket is important for outer layers to provide vital protection from rain, dust, humidity, and other pollutants for tools, instruments, valuables, and work accessories.



Storm Flap

A vital feature that provides an additional layer of protection against harsh weather conditions, such as wind and rain, by preventing moisture from penetrating and providing insulation against the cold.

Chevron Technology

Our chevron technology uses smart diagonal reflective tape to wrap around the body and arms to provide a higher level of style and safety for the wearer.

Cuff Secure

We have provided cuff secure fastenings on our garments to provide maximum levels of adjustability for added safety, and additional access to watches and other wearable technology.

Fabric Specifications & Standards

Fabric: Outer - 55% Protex , 44% Cotton, 1% Negastat. PES Membrane. Protex/Cotton Fleece Backing



IEC 61482-2
Electric Arc



EN 1149-3
Anti-static



EN ISO 11612
Flame resistant



EN 343
Waterproof



EN ISO 20471
High visibility

SKU: C21.FB383



FR & Arc Ultra Lightweight Class 1 Coveralls

The latest in PPE and workwear, our 10 Cal Class 1 FR & Arc flash coveralls are made from an ultra-lightweight fabric that delivers exceptional levels of comfort and flexibility at a weight of only 650g.

The two tone Hi-Vis and navy feature-rich design includes raglan sleeves, multiple back and leg pockets, chevron technology, double breast pockets & PAM loops, and flexi-gusset ankle cuffs.



Product Highlights



SAFETY IN STYLE.

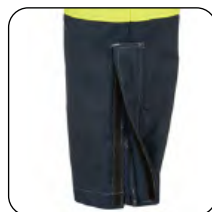
Product Features



Raglan Sleeve



Double Breast Pockets & PAM Loops



Flexi-Gusset Ankle Cuffs



Elastic Waist & Action Back



Velcro Cuff Secure

SKU: C21.FB3122



Feature Details

Raglan Sleeve

This design feature intelligently delivers complete freedom of movement due to the extra space created by the shape of the sleeve.

Velcro Cuff Secure

We have provided velcro cuffs on our garments to provide maximum levels of adjustability for added safety, and additional access to watches and other wearable technology.



Double Breast Pockets & PAM Loops

The double breast pocket ensures there is always room for your work items to be stored and accessed, and the PAM radio loop provides a handy way to hang your radio or gas detectors.

Stretchable Waist

One of the most important features of a coverall is flexibility at the waist. This not only makes it more comfortable to wear but improves product life.

Full-Gusset Ankle Cuffs

Our flex-gusset ankle cuffs are designed to easily put over work boots, and consistently increase the range of leg motion available to the wearer whilst working.

Fabric Specifications & Standards



IEC 61482-1-2-2014

Electric Arc



EN 1149

Anti-static



EN ISO 11612

Flame resistant



EN ISO 11611

Welding



EN ISO 20471

High visibility

SKU: C21.FB3122



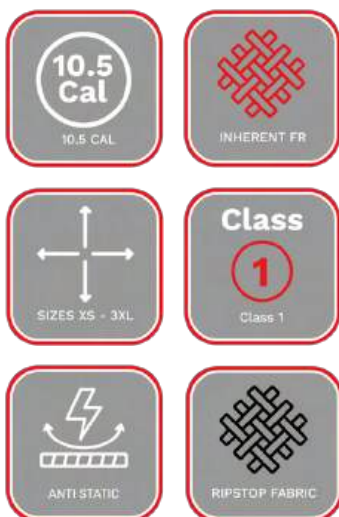
FR & Arc Class 1 Boiler Suit

The latest in PPE and workwear, our 10.5 Cal Class 1 FR & Arc navy coveralls provide unrivalled levels of flexibility and protection, whilst delivering all the features for maximum accessibility whilst working.

The navy feature-rich design includes large side pockets and openings, rear pockets, stand up collar, pam loops on chest, and covered chest pockets.



Product Highlights



SAFETY IN STYLE.

Product Features



Chevron Technology



Double Breast Pockets & PAM Loops



Flexi-Gusset Ankle Cuffs



Zip Sleeve Pocket



Velcro Cuff Secure

SKU: C21.FB3192



Feature Details

Chevron Technology

Our chevron technology uses smart diagonal reflective tape to wrap around the body and arms to provide a higher level of style and safety for the wearer.



Double Breast Pockets & PAM Loops

The double breast pocket ensures there is always room for your work items to be stored and accessed, and the PAM radio loop provides a handy way to hang your radio or gas detectors.

Multi Pocket

Pockets are a vital feature on the outer layers of FR & Arc flash workwear and PPE, and our coveralls and boiler suits provide multiple pockets that are easy to find, access, and close.

Velcro Cuff Secure

We have provided velcro cuffs on our garments to provide maximum levels of adjustability for added safety, and additional access to watches and other wearable technology.

Full-Gusset Ankle Cuffs

Our flexi-gusset ankle cuffs are designed to maximise mobility and consistently increase the range of leg motion available to the wearer whilst working.

Fabric Specifications & Standards

Fabric: 235 gm²: 54% Protex, 44% Cotton, 2% Negastat



EC 61482-1-2-2014

Electric Arc



EN 1149-5

Anti-static



EN ISO 11612

Flame resistant



EN ISO 11611

Welding

SKU: C21.FB3192



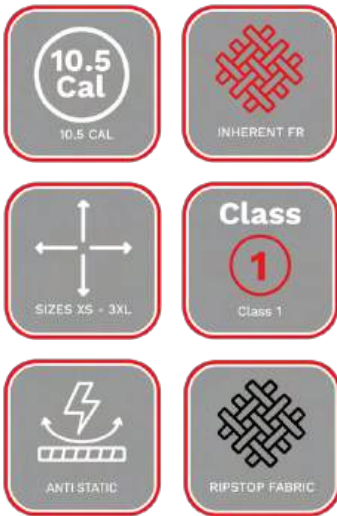
FR & Arc Class 1 Hi-Vis Boiler Suit

The latest in PPE and workwear, our 10.5 Cal Class 1 FR & Arc hi vis coveralls provide unrivalled levels of flexibility and protection, whilst delivering all the features for maximum accessibility whilst working.

The two tone Hi-Vis and navy feature-rich design includes large side pockets and openings, rear pockets, stand up collar, pam loops on chest, and covered chest pockets.



Product Highlights



SAFETY IN STYLE.

Product Features



Chevron Technology



Double Breast Pockets & PAM Loops



Flexi-Gusset Ankle Cuffs



Multi Pocket



Velcro Cuff Secure

SKU: C21.FB3192-SYNV



Feature Details

Chevron Technology

Our chevron technology uses smart diagonal reflective tape to wrap around the body and arms to provide a higher level of style and safety for the wearer.

Velcro Cuff Secure

We have provided velcro cuffs on our garments to provide maximum levels of adjustability for added safety, and additional access to watches and other wearable technology.



Double Breast Pockets & PAM Loops

The double breast pocket ensures there is always room for your work items to be stored and accessed, and the PAM radio loop provides a handy way to hang your radio or gas detectors.

Multi Pocket

Pockets are a vital feature on the outer layers of FR & Arc flash workwear and PPE, and our coveralls and boiler suits provide multiple pockets that are easy to find, access, and close.

Full-Gusset Ankle Cuffs

Our flexi-gusset ankle cuffs are designed to maximise mobility and consistently increase the range of leg motion available to the wearer whilst working.

Fabric Specifications & Standards

Fabric: 235 gm²: 54% Protex, 44% Cotton, 2% Negastat



IEC 61482-1-2-2014

Electric Arc



EN 1149

Anti-static



EN ISO 11612

Flame resistant



EN ISO 11611

Welding



EN ISO 20471

High visibility

SKU: C21.FB3192-SYNV



FR & Arc Ultra Lightweight Class 2 Coveralls

The latest in PPE and workwear, our 21 Cal Class 2 FR & Arc flash coveralls are made from an ultra-lightweight fabric that delivers exceptional levels of comfort and flexibility at a weight of only 1kg.

The two tone Hi-Vis and navy feature-rich design includes raglan sleeves, multiple back and leg pockets, chevron technology, double breast pockets & PAM loops, and flex-gusset ankle cuffs.



Product Highlights



SAFETY IN STYLE.

Product Features



Raglan Sleeve



Double Breast Pockets & PAM Loops



Flexi-Gusset Ankle Cuffs



Elastic Waist & Action Back



Velcro Cuff Secure

SKU: C21.FB3222



Feature Details

Raglan Sleeve

This design feature intelligently delivers complete freedom of movement due to the extra space created by the shape of the sleeve.

Velcro Cuff Secure

We have provided velcro cuffs on our garments to provide maximum levels of adjustability for added safety, and additional access to watches and other wearable technology.



Double Breast Pockets & PAM Loops

The double breast pocket ensures there is always room for your work items to be stored and accessed, and the PAM radio loop provides a handy way to hang your radio or gas detectors.

Stretchable Waist

One of the most important features of a coverall is flexibility at the waist. This not only makes it more comfortable to wear but improves product life.

Full-Gusset Ankle Cuffs

Our flex-gusset ankle cuffs are designed to easily put over work boots, and consistently increase the range of leg motion available to the wearer whilst working.

Fabric Specifications & Standards



IEC 61482-1-2-2014

Electric Arc



EN 1149

Anti-static



EN ISO 11612

Flame resistant



EN ISO 11611

Welding



EN ISO 20471

High visibility

SKU: C21.FB3222



FR & Arc Class 2 Boiler Suit

The latest in PPE and workwear, our 21 Cal Class 2 FR & Arc navy coveralls provide unrivalled levels of flexibility and protection, whilst delivering all the features for maximum accessibility whilst working.

The navy feature-rich design includes large side pockets and openings, rear pockets, stand up collar, pam loops on chest, and covered chest pockets.



Product Highlights



SAFETY IN STYLE.

Product Features



Chevron Technology



Double Breast Pockets & PAM Loops



Flexi-Gusset Ankle Cuffs



Zip Sleeve Pocket



Velcro Cuff Secure

SKU: C21.FB3292



Feature Details

Chevron Technology

Our chevron technology uses smart diagonal reflective tape to wrap around the body and arms to provide a higher level of style and safety for the wearer.



Double Breast Pockets & PAM Loops

The double breast pocket ensures there is always room for your work items to be stored and accessed, and the PAM radio loop provides a handy way to hang your radio or gas detectors.

Multi Pocket

Pockets are a vital feature on the outer layers of FR & Arc flash workwear and PPE, and our coveralls and boiler suits provide multiple pockets that are easy to find, access, and close.

Velcro Cuff Secure

We have provided velcro cuffs on our garments to provide maximum levels of adjustability for added safety, and additional access to watches and other wearable technology.

Full-Gusset Ankle Cuffs

Our flexi-gusset ankle cuffs are designed to maximise mobility and consistently increase the range of leg motion available to the wearer whilst working.

Fabric Specifications & Standards

Fabric: 2 layers 235 gm²: 54% Protex, 44% Cotton, 2% Negastat



EC 61482-1-2-2014

Electric Arc



EN 1149-5

Anti-static



EN ISO 11612

Flame resistant



EN ISO 11611

Welding

SKU: C21.FB3292



FR & Arc Class 2 Hi-Vis Boiler Suit

The latest in PPE and workwear, our Class 2 FR & Arc hi vis coveralls provide unrivalled levels of flexibility and protection, whilst delivering all the features for maximum accessibility whilst working.

The two tone Hi-Vis and navy feature-rich design includes large side pockets and openings, rear pockets, stand up collar, pam loops on chest, and covered chest pockets.



Product Highlights



SAFETY IN STYLE.

Product Features



Chevron Technology



Double Breast Pockets & PAM Loops



Flexi-Gusset Ankle Cuffs



Multi Pocket



Velcro Cuff Secure

SKU: C21.FB3292-SYNV



Feature Details

Chevron Technology

Our chevron technology uses smart diagonal reflective tape to wrap around the body and arms to provide a higher level of style and safety for the wearer.

Velcro Cuff Secure

We have provided velcro cuffs on our garments to provide maximum levels of adjustability for added safety, and additional access to watches and other wearable technology.



Double Breast Pockets & PAM Loops

The double breast pocket ensures there is always room for your work items to be stored and accessed, and the PAM radio loop provides a handy way to hang your radio or gas detectors.

Multi Pocket

Pockets are a vital feature on the outer layers of FR & Arc flash workwear and PPE, and our coveralls and boiler suits provide multiple pockets that are easy to find, access, and close.

Full-Gusset Ankle Cuffs

Our flexi-gusset ankle cuffs are designed to maximise mobility and consistently increase the range of leg motion available to the wearer whilst working.

Fabric Specifications & Standards

Fabric: 2 Layers - 235 gm² : 54% Protex, 44% Cotton, 2% Negastat



IEC 61482-1-2-2014

Electric Arc



EN 1149

Anti-static



EN ISO 11612

Flame resistant



EN ISO 14116

Flame Spread



EN ISO 11611

Welding



EN ISO 20471

High visibility

SKU: C21.FB3292-SYNV



04 Waterproof.

When the elements are at their worst, you can still be at your best. Stay productive whatever the weather with our range of feature-rich extreme weather protection.





FR & Arc Class 2 Hi-Vis Wet Weather Jacket

The latest in PPE and workwear, our Class 2 FR & Arc hi-vis wet weather jackets provide high levels of flexibility and protection, whilst delivering all the features for maximum accessibility whilst working.

The two tone Hi-Vis and navy feature-rich design includes zip front fastening with storm flap, taped seams, two patch pockets, one inner pocket, internal elasticated storm cuff, and foldaway hood.



Product Highlights



SAFETY IN STYLE.

Product Features



Velcro storm flap



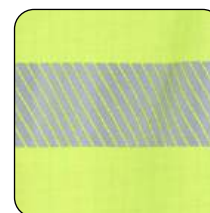
Scooped back



Flexi-gusset technology



Roll-up hood



Chevron design

SKU: C21.FB4222



Feature Details



Roll up hood

A roll up hood is an essential safety feature for working in extreme conditions at height, as it prevents the hood getting caught in the wind and pulling at the jacket around the neck.

Velcro storm flap

A vital feature that provides an additional layer of protection against harsh weather conditions, such as wind and rain, by preventing moisture from penetrating and providing insulation against the cold.

Flex-gusset technology

Our flex-gusset technology is a valuable workwear feature designed to maximise mobility and increase the range of leg, arm, and body motion available to the wearer.

Scoop back

The scooped back design of our tops prevents the garment from becoming untucked or riding up and letting cold air in when bending over.

Chevron technology

Our chevron technology uses smart diagonal reflective tape to wrap around the body and arms to provide a higher level of style and safety for the wearer.

Fabric Specifications & Standards

Fabric: Lenzing FR viscose provide smoothness and comfort, Protal Modacryl provide security with an inherent and permanent flame resistance fabric. Antistatic to protect from electrostatic discharge hazards.



IEC 61482
Electric Arc



EN 1149
Anti-static



EN ISO 11612
Flame resistant



EN ISO 14116
Flame spread



EN 343-3-3
Waterproof



EN ISO 20471
High visibility

SKU: C21.FB4222



FR & Arc Class 2 Hi-Vis Wet Weather Jacket

The latest in women's PPE and workwear, our Class 2 FR & Arc hi-vis wet weather jackets provide high levels of flexibility and protection, whilst delivering all the features for maximum accessibility whilst working.

The two tone hi-vis and navy feature-rich design includes zip front fastening with storm flap, taped seams, two patch pockets, one inner pocket, internal elasticated storm cuff, and foldaway hood.



Product Highlights



SAFETY IN STYLE.

Product Features



Velcro storm flap



Scooped back



Flexi-gusset technology



Roll-up hood



Chevron design

SKU: C21.FB4222F



Feature Details

Roll up hood

A roll up hood is an essential safety feature for working in extreme conditions at height, as it prevents the hood getting caught in the wind and pulling at the jacket around the neck.

Scoop back

The scooped back design of our tops prevents the garment from becoming untucked or riding up and letting cold air in when bending over.



Velcro storm flap

A vital feature that provides an additional layer of protection against harsh weather conditions, such as wind and rain, by preventing moisture from penetrating and providing insulation against the cold.

Flex-gusset technology

Our flex-gusset technology is a valuable workwear feature designed to maximise mobility and increase the range of leg, arm, and body motion available to the wearer.

Chevron technology

Our chevron technology uses smart diagonal reflective tape to wrap around the body and arms to provide a higher level of style and safety for the wearer.

Fabric Specifications & Standards

Fabric: Lenzing FR viscose provide smoothness and comfort, Protal Modacryl provide security with an inherent and permanent flame resistance fabric. Antistatic to protect from electrostatic discharge hazards.



IEC 61482
Electric Arc



EN 1149
Anti-static



EN ISO 11612
Flame resistant



EN ISO 14116
Flame spread



EN 343-3-3
Waterproof



EN ISO 20471
High visibility

SKU: C21.FB4222F



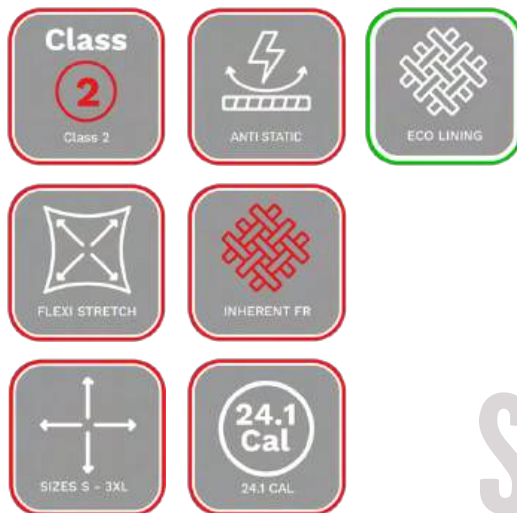
FR & Arc Hi-Vis Waterproof Trousers

The latest in PPE and workwear, our FR & Arc hi vis waterproof trousers provide high levels of flexibility and protection, whilst delivering all the features for maximum accessibility whilst working.

The two tone hi-vis and navy feature-rich design give breathable and waterproof protection and includes storm flaps, adjustable straps, flex-gusset technology, splash guard, and chevron technology.



Product Highlights



SAFETY IN STYLE.

Product Features



Adjustable straps



Storm flap



Flexi-stretch



Splash guard

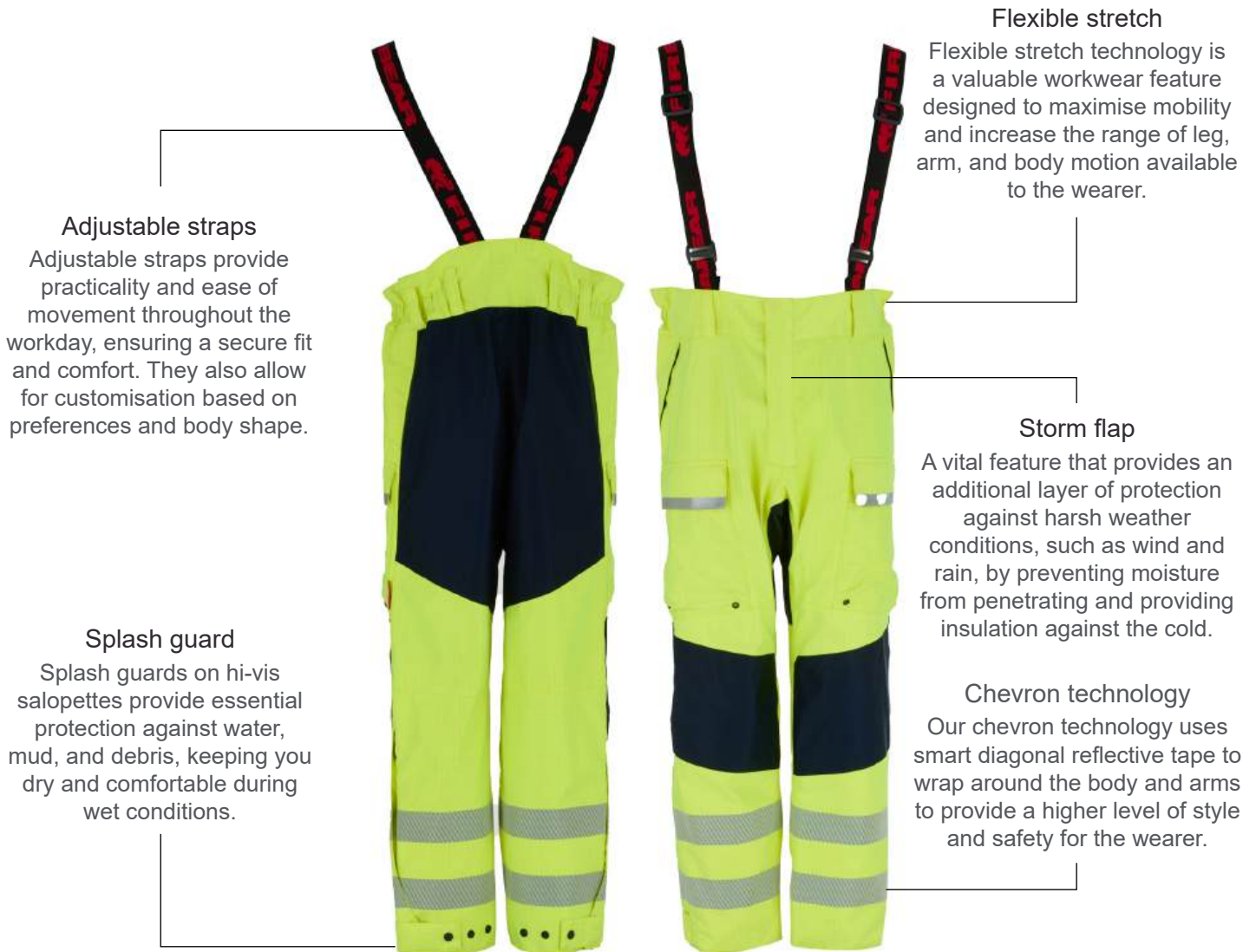


Chevron technology

SKU: C21.FB4273



Feature Details



Adjustable straps

Adjustable straps provide practicality and ease of movement throughout the workday, ensuring a secure fit and comfort. They also allow for customisation based on preferences and body shape.

Flexible stretch

Flexible stretch technology is a valuable workwear feature designed to maximise mobility and increase the range of leg, arm, and body motion available to the wearer.

Storm flap

A vital feature that provides an additional layer of protection against harsh weather conditions, such as wind and rain, by preventing moisture from penetrating and providing insulation against the cold.

Splash guard

Splash guards on hi-vis salopettes provide essential protection against water, mud, and debris, keeping you dry and comfortable during wet conditions.

Chevron technology

Our chevron technology uses smart diagonal reflective tape to wrap around the body and arms to provide a higher level of style and safety for the wearer.

Fabric Specifications & Standards

Fabric: Lenzing FR viscose provide smoothness and comfort, Protal Modacryl provide security with an inherent and permanent flame resistance fabric. Antistatic to protect from electrostatic discharge hazards.



IEC 61482
Electric Arc



EN 1149
Anti-static



EN ISO 11612
Flame resistant



EN ISO 14116
Flame spread



EN 343-4-4
Waterproof



EN ISO 20471
High visibility

SKU: C21.FB4273



FR & Arc Hi-Vis Waterproof Trousers

The latest in women's PPE and workwear, our FR & Arc hi-vis waterproof trousers provide high levels of flexibility and protection, whilst delivering all the features for maximum accessibility whilst working.

The two tone hi-vis and navy feature-rich design give breathable and waterproof protection and includes storm flaps, adjustable straps, flex-gusset technology, splash guard, and chevron technology.



Product Highlights

- Class 2** (Class 2)
- ANTI-STATIC**
- ECO LINING**
- FLEXI STRETCH**
- INHERENT FR**
- SIZES S - 3XL**
- 24.1 Cal** (24.1 CAL)

SAFETY IN STYLE.

Product Features



Adjustable straps



Storm flap



Flexi-stretch



Splash guard



Chevron technology

SKU: C21.FB4273F



Feature Details



Adjustable straps

Adjustable straps provide practicality and ease of movement throughout the workday, ensuring a secure fit and comfort. They also allow for customisation based on preferences and body shape.

Flexible stretch

Flexible stretch technology is a valuable workwear feature designed to maximise mobility and increase the range of leg, arm, and body motion available to the wearer.

Storm flap

A vital feature that provides an additional layer of protection against harsh weather conditions, such as wind and rain, by preventing moisture from penetrating and providing insulation against the cold.

Splash guard

Splash guards on hi-vis salopettes provide essential protection against water, mud, and debris, keeping you dry and comfortable during wet conditions.

Chevron technology

Our chevron technology uses smart diagonal reflective tape to wrap around the body and arms to provide a higher level of style and safety for the wearer.

Fabric Specifications & Standards

Fabric: Lenzing FR viscose provide smoothness and comfort, Protal Modacryl provide security with an inherent and permanent flame resistance fabric. Antistatic to protect from electrostatic discharge hazards.



IEC 61482
Electric Arc



EN 1149
Anti-static



EN ISO 11612
Flame resistant



EN ISO 14116
Flame spread



EN 343-4-4
Waterproof



EN ISO 20471
High visibility

SKU: C21.FB4273F



FR & Arc Class 2 Hi-Vis Wet Weather Salopettes

The latest in PPE and workwear, our Class 2 FR & Arc hi vis wet weather salopettes provide increased flexibility and protection, whilst delivering all the features for maximum accessibility whilst working.

The two tone Hi-Vis and navy feature-rich design is approved to give breathable and waterproof protection and includes fully taped seams, heat applied reflective stripes, and adjustable braces.



Product Highlights



SAFETY IN STYLE.

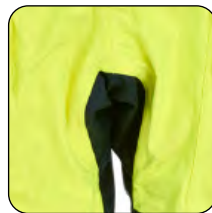
Product Features



Adjustable straps



Storm flap



Flexi-stretch



Splash guard



Chevron technology

SKU: C21.FB4272



Feature Details



Adjustable straps

Adjustable straps provide practicality and ease of movement throughout the workday, ensuring a secure fit and comfort. They also allow for customisation based on preferences and body shape.

Splash guard

Splash guards on hi-vis salopettes provide essential protection against water, mud, and debris, keeping you dry and comfortable during wet conditions.

Flexible stretch

Flexible stretch technology is a valuable workwear feature designed to maximise mobility and increase the range of leg, arm, and body motion available to the wearer.

Storm flap

A vital feature that provides an additional layer of protection against harsh weather conditions, such as wind and rain, by preventing moisture from penetrating and providing insulation against the cold.

Chevron technology

Our chevron technology uses smart diagonal reflective tape to wrap around the body and arms to provide a higher level of style and safety for the wearer.

Fabric Specifications & Standards

Fabric: Lenzing FR viscose provide smoothness and comfort, Protal Modacryl provide security with an inherent and permanent flame resistance fabric. Antistatic to protect from electrostatic discharge hazards.



IEC 61482
Electric Arc



EN 1149
Anti-static



EN ISO 11612
Flame resistant



EN ISO 14116
Flame spread



EN 343-4-4
Waterproof



EN ISO 20471
High visibility

SKU: C21.FB4272



FR & Arc Class 2 Hi-Vis Wet Weather Salopettes

The latest in women's PPE and workwear, our Class 2 FR & Arc hi vis wet weather salopettes provide increased flexibility and protection, whilst delivering all the features for maximum accessibility whilst working.

The two tone Hi-Vis and navy feature-rich design is approved to give breathable and waterproof protection and includes fully taped seams, heat applied reflective stripes, and adjustable braces.



Product Highlights



SAFETY IN STYLE.

Product Features



Adjustable straps



Storm flap



Flexi-stretch



Splash guard



Chevron technology

SKU: C21.FB4272F



Feature Details



Adjustable straps

Adjustable straps provide practicality and ease of movement throughout the workday, ensuring a secure fit and comfort. They also allow for customisation based on preferences and body shape.

Splash guard

Splash guards on hi-vis salopettes provide essential protection against water, mud, and debris, keeping you dry and comfortable during wet conditions.

Flexible stretch

Flexible stretch technology is a valuable workwear feature designed to maximise mobility and increase the range of leg, arm, and body motion available to the wearer.

Storm flap

A vital feature that provides an additional layer of protection against harsh weather conditions, such as wind and rain, by preventing moisture from penetrating and providing insulation against the cold.

Chevron technology

Our chevron technology uses smart diagonal reflective tape to wrap around the body and arms to provide a higher level of style and safety for the wearer.

Fabric Specifications & Standards

Fabric: Lenzing FR viscose provide smoothness and comfort, Protal Modacryl provide security with an inherent and permanent flame resistance fabric. Antistatic to protect from electrostatic discharge hazards.



IEC 61482
Electric Arc



EN 1149
Anti-static



EN ISO 11612
Flame resistant



EN ISO 14116
Flame spread



EN 343-4-4
Waterproof



EN ISO 20471
High visibility

SKU: C21.FB4272F



FIREBEAR.COM

