

INFORMED DECISION MAKING

Unlocking the true value of geospatial data

murphygs.com



INFRASTRUCTURE



MANUFACTURING



UTILITIES



ENERGY



PROPERTY



NATURAL
ENVIRONMENT

Contents

03 Foreword

**04 About Murphy
Geospatial**

07 Our approach

08 Infrastructure

10 Manufacturing

12 Utilities

14 Energy

16 Property

18 Natural Environment

20 Our team

22 Our credentials

24 Contact

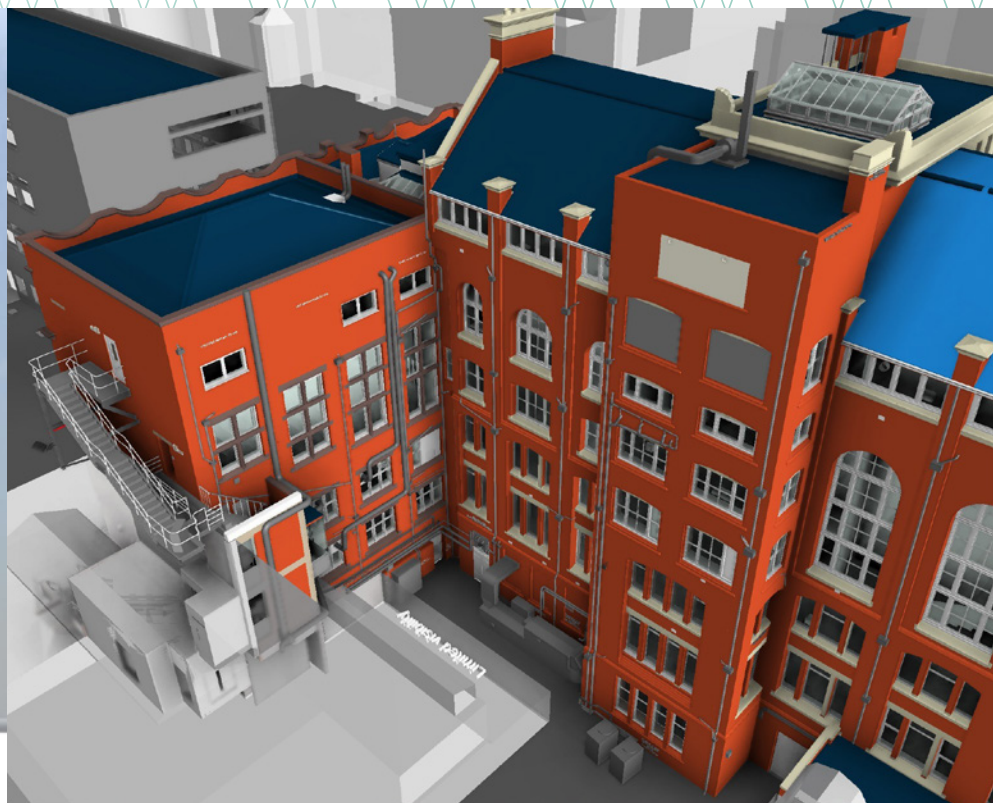


Foreword

Geospatial data is everywhere. It underpins our buildings, infrastructure and our increasingly connected and location-dependent world. The value of geospatial data lies in its ability to reveal patterns, trends, and relationships that can lead to more efficient and effective decisions.

We help you to collate, govern and use your project's geospatial data to its full potential. We manage risk, reduce cost, simplify complexity, and lead our industry as the standard makers and the recognised mark of quality. Combining our knowledge and expertise with integrated cutting-edge technology, we want to drive a sustainable future that puts data at the heart of informed decision-making, by unlocking the true value of geospatial data.

Our vision is to be the partner of choice for geospatial certainty.



About Murphy Geospatial



27,000+

projects delivered
across Ireland, the
UK, and Europe



6

dynamic sectors
served



400+

A team of over
400 experts



10+

We've worked in
over 10 countries

Our Values



Integrity

Through strong principles and professionalism, we have built a reputation that people can trust. We always give honest advice and make considered and authentic decisions that uphold our ethics and integrity.



Community

We are an organisation committed to creating an open and supportive environment that inspires and motivates our staff to reach their full potential. We also look to the wider community to actively support local companies and charities.



Innovation

We are relentless in our pursuit of progress and are passionate advocates for the surveying industry. We are fearless in breaking new ground by embracing emerging technologies and different ways of thinking.



Respect

We support and encourage diversity and celebrate the achievements of others. As well as being mindful of the people we engage with, we aim to respect the environment by trying to always work sustainably for future generations.

For more than 40 years, Murphy Geospatial has been providing geospatial certainty to our clients in Ireland, the UK, Europe, and globally. Our expertise and tech-enabled solutions support our clients to make informed decisions using verified geospatial data and consultancy.

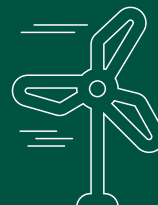
We operate in six distinct sectors and multiple subsectors:



PROPERTY



UTILITIES



ENERGY



MANUFACTURING



**NATURAL
ENVIRONMENT**



INFRASTRUCTURE





We work with you

Our experts come together to understand the unique needs of your project and recommend the services that will help you to meet your end goal. We are technology agnostic, so you will always get the recommendations that are right for your project.



We know data

Our experts collect, collate, govern, and verify your geospatial data to support you to make informed decisions about your project.



We keep things moving

The solutions we recommend are designed to keep your project on programme, on budget, to the highest health and safety standards, and with minimal disruption.



We make things smart

The geospatial data we gather will be essential to the digitalisation of the built environment, the development of smart infrastructure, robotics, automation, and the creation of digital twins.

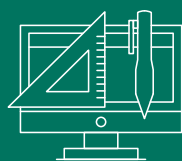


Project Lifecycle

Our geospatial solutions can be engaged throughout your project's lifecycle. By consistently gathering geospatial data, you can ensure alignment with original design, detect issues early on, and act to avoid delay, disruption, and unplanned costs.



**STRATEGY AND
PLANNING_**



DESIGN_



CONSTRUCTION_

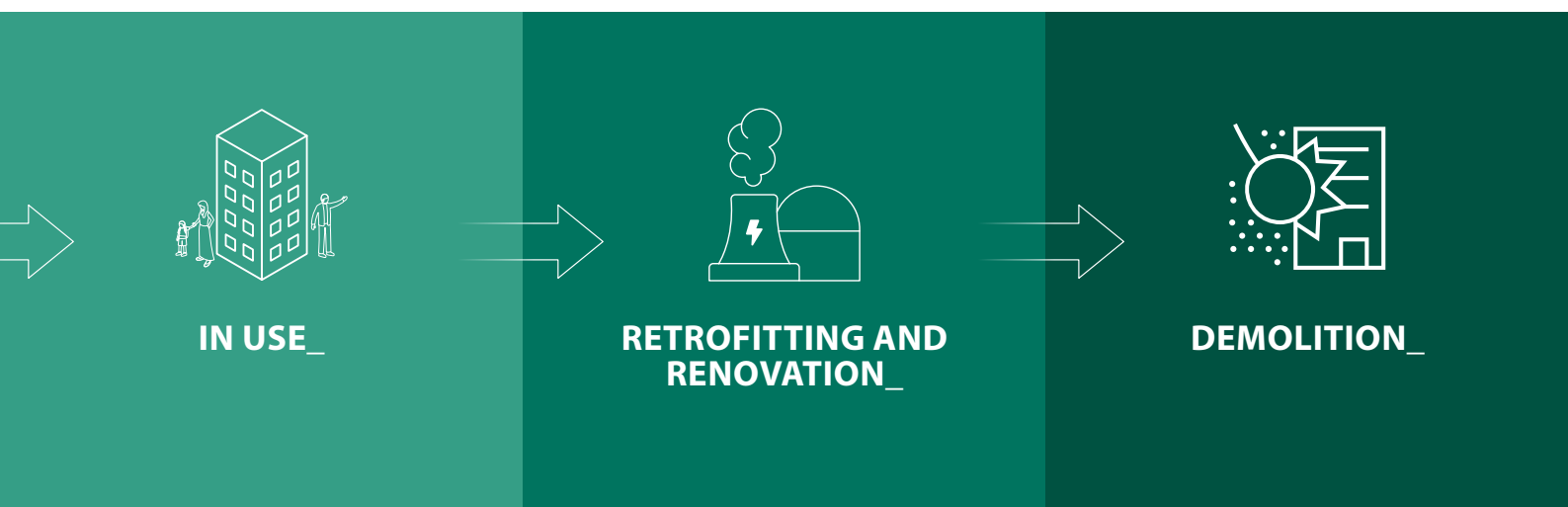
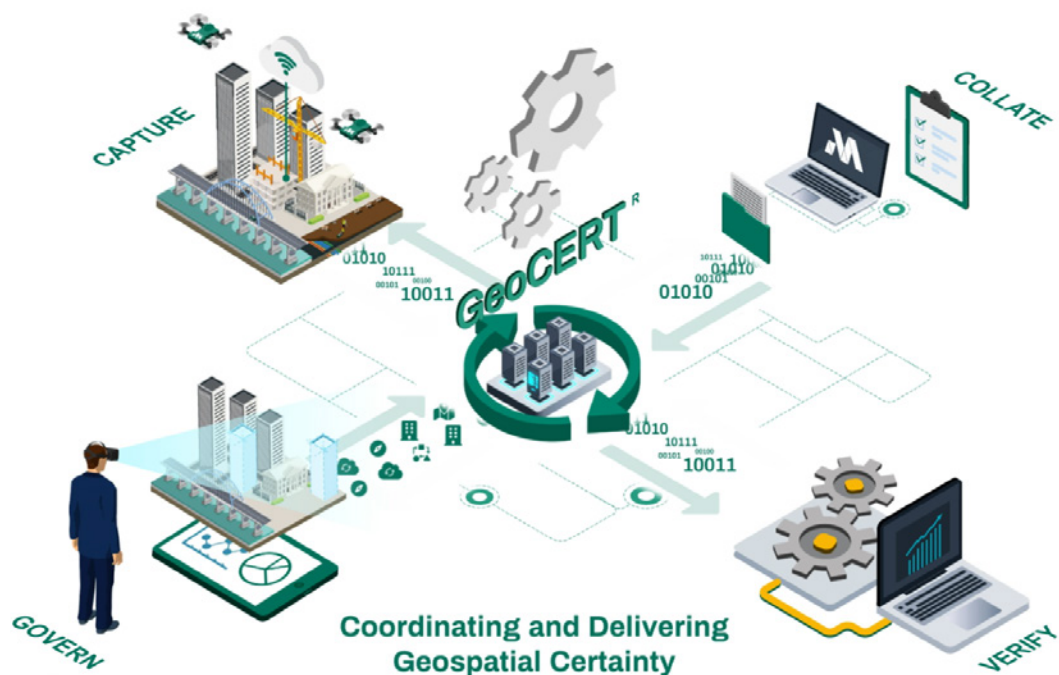
Our approach

Our vision is to be the first-choice partner for geospatial certainty, and we are putting geospatial to work on increasing efficiency, quality, and reducing costs across the industries we operate in.

GeoCERT®

We understand the importance of geospatial certainty which is why we developed an industry performance standard GeoCERT®.

GeoCERT® integrates people, processes, and technology to provide geospatial certainty when managing geospatial data and its primary goal is to deliver accurate and reliable geospatial information. Maintaining the GeoCERT® standard sets industry up for a future where a centralised portal manages geospatial data. This approach recognises that data capture methods have evolved, including the ability to collect information using everyday devices like smartphones. The next iterations of GeoCERT® will leverage AI to extract quick insights from data, addressing the need for real-time updates.



Infrastructure

In the construction, maintenance, and monitoring of infrastructure projects it's essential to provide accurate data to minimise delays and disruption to the public. Taking these actions reduces the likelihood of project overspend.

Geospatial data provides a digital representation of reality which supports digital project workflows. With real-time digital insights, you can undertake predictive maintenance, streamline your resources, and budget, and increase collaborative working from remote locations.

We have extensive experience working on infrastructure projects that cover road, rail, utility networks, light rail, and tunnelling. to drive a sustainable future that puts data at the heart of informed decision making, by unlocking the true value of geospatial data.



**PARAIC
QUIRKE**

Associate Director

I'm Paraic Quirke, an Associate Director with the company

Our solutions

Our team of experts work with clients to create bespoke geospatial management plans. Our solutions for infrastructure projects include:

Investigation - Accessible asset data reviewing component conditions for informed decisions making.

Geospatial mapping - We capture geospatial data to provide comprehensive records and information of your asset.

Asset monitoring - Our remote monitoring tracks structural changes without wider disruption.

Geospatial engineering - We offer end-to-end project support, bridging the gap between digital design and real-world implementation.

**Read more about
our infrastructure
projects here.**



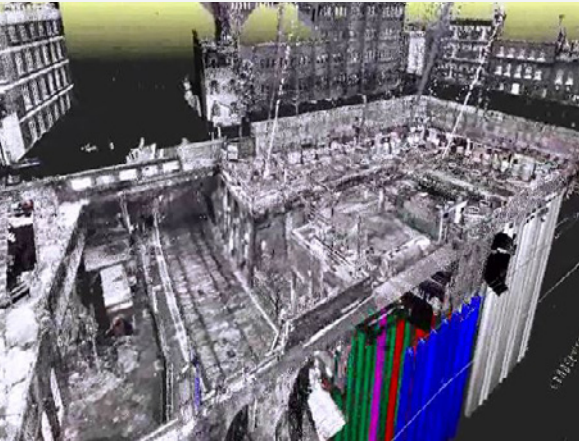
Case Studies

HS2

We delivered a detailed 3D topographical and subsurface model for the HS2 high-speed rail line, for client Skanska Costain STRABAG JV (SCS JV). Navigating through the complexities of a 26.4km stretch from West Ruislip to Euston in London, this project will boost rail capacity and transform connectivity across the UK.

We engaged with the community and stakeholders to shape a responsive work plan. This ensured minimal disruptions and increased safety.

The collaboration between Murphy Geospatial, SCS JV, and the supply chain resulted in successful delivery on time and on budget.



We engaged the services of Murphy Geospatial to undertake live monitoring of the Luas Line on a project in Dublin City Centre. Due to the proximity of the Luas lines to the double basement excavation, a detailed methodology and monitoring proposal was required. Shane and his team developed a methodology and carried out AMS track monitoring, precise level surveying, inclinometer readings and vibration monitoring during our works. Murphy Geospatial completed this work to a high standard from start to finish and we look forward to working with them again in the future.

Project Manager,
Walls Construction



Contact our infrastructure sector lead
Paraic Quirke at pquirke@murphygs.ie
to find out more.

Manufacturing

In manufacturing, it's imperative to stay on schedule during shutdowns, upgrades, or construction activities. Our geospatial solutions ensure that you can reduce the risk of clashes and costly delays even in the most complex and time sensitive environments.

We have extensive experience working in pharmaceuticals, advanced technology facilities, and food and beverage production sites.



Our solutions

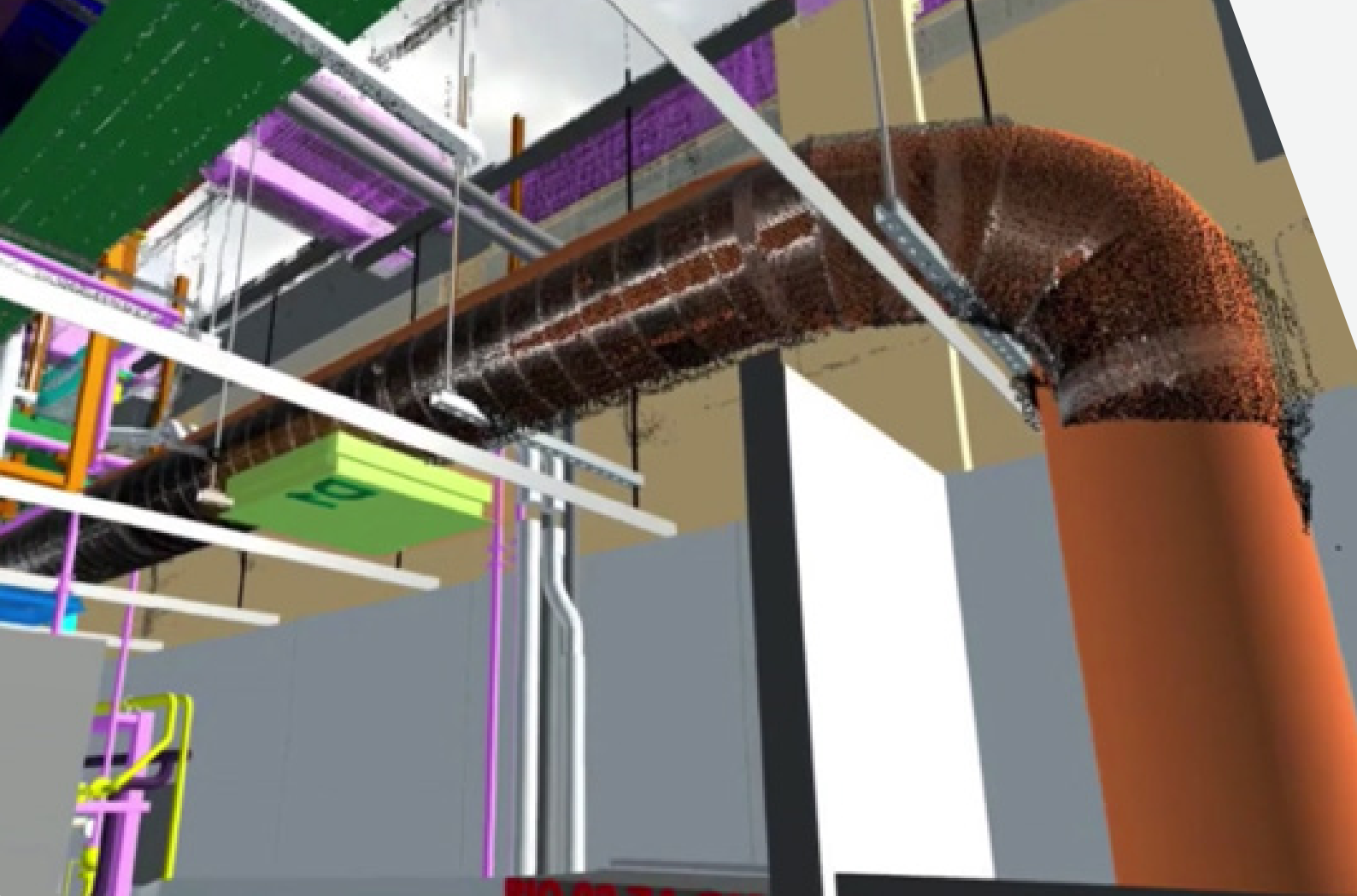
Geospatial consulting - We can leverage precise location-based data through advanced technologies and processes, alongside ensuring data accuracy and compliance.

Geospatial mapping - We capture geospatial data to provide comprehensive records and information on your asset.

Asset monitoring - Our remote monitoring tracks structural changes without wider disruption.

Geospatial engineering - We offer end-to-end project support, bridging the gap between digital design and real-world implementation.





Case Studies

B-CON API Project

In collaboration with Jacobs Engineering, we played a vital role in the €150 million Merck Sharp & Dohme pharmaceutical facility project. The complexity of the low-density build, involving multiple stakeholders and various supply chain disciplines, posed unique challenges. We integrated into the digital delivery and quality teams and introduced geospatial management to instil a “right first time” culture.

By meticulously managing geospatial activities on-site, we took control of datums and baselines, reducing liability risks and ensuring adherence to the geospatial management plan. Proactive identification of issues, daily reporting, and a weekly quality report facilitated constant improvement in build accuracy, preventing safety risks and rework in the field.

The project, initiated in Q2 2021, has seen a remarkable improvement in the quality of installation, with estimated cost avoidance of €500k-€750k, showcasing the substantial impact of our precision and proactive approach.

The use of Geospatial Management in the life sciences sector delivers significant benefits during the construction phase of facilities. The high complexity of these facilities, often involving specialised equipment, makes it crucial to identify and address issues early on to prevent them from escalating into larger problems.

We have seen improved coordination and more effective decision-making by leveraging geospatial management. Geospatial management has supported greater efficiency, accuracy, and cost-effectiveness during construction which leads to a top-quality facility and better overall project outcomes.

Manager of Construction Quality,
Jacobs Engineering

**Contact our manufacturing sector lead
JP Kelly at jpkelly@murphygs.ie
to find out more.**

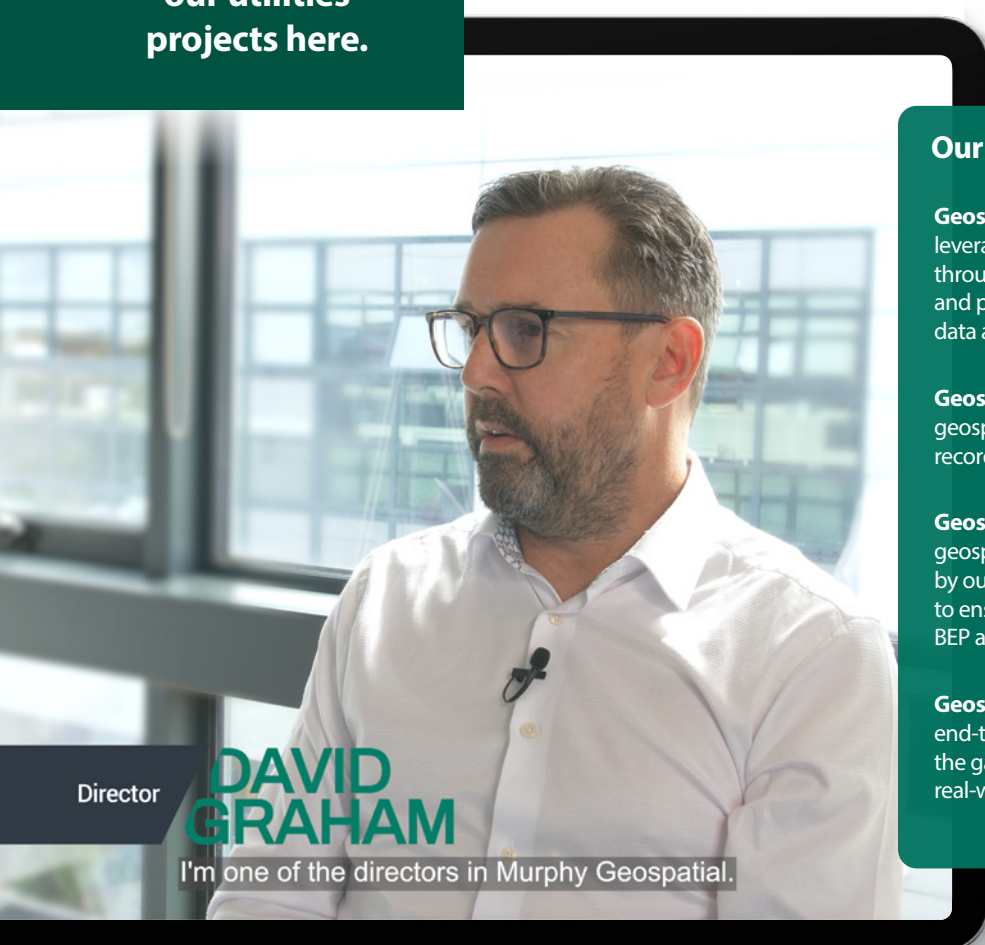
Utilities

It's fundamental to ensure that design, construction, maintenance, retrofitting and asset management of utilities can be carried out without any adverse effects on essential services.

Accurate geospatial survey data and expert interpretation is integral to the safe and efficient construction and continued distribution of power and utilities, whilst minimising disruption.

We have extensive experience working on oil and gas networks, water, power networks, data centres and telecoms.

**Read more about
our utilities
projects here.**



Director

**DAVID
GRAHAM**

I'm one of the directors in Murphy Geospatial.

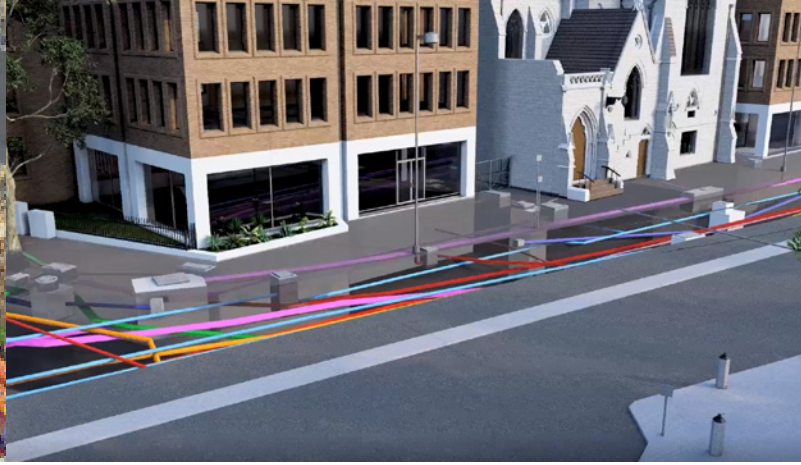
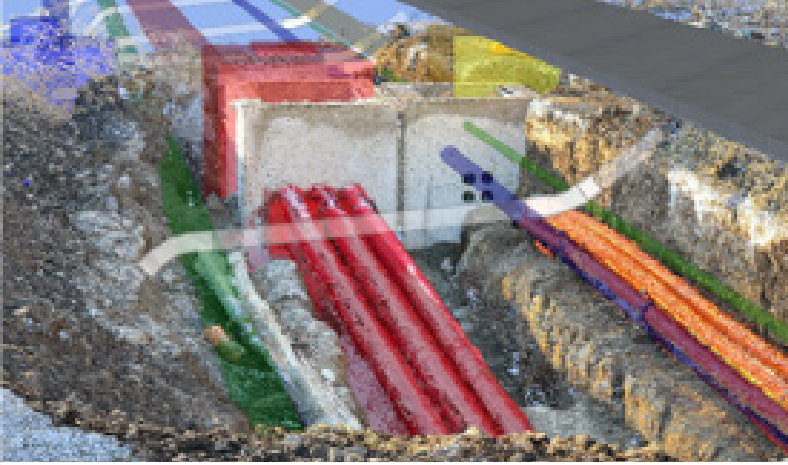
Our solutions

Geospatial consulting - We can leverage precise location-based data through advanced technologies and processes, alongside ensuring data accuracy and compliance.

Geospatial mapping - We capture geospatial data to provide comprehensive records and information on your asset.

Geospatial management - Your custom geospatial management plan is delivered by our experienced geospatial managers to ensure consistency and accuracy to BEP and AIM criteria for all spatial data.

Geospatial engineering - We offer end-to-end project support, bridging the gap between digital design and real-world implementation.



Case Studies

Metrolink

We provided a digital asset of the proposed route for the Metrolink project in Dublin, Ireland, during the planning and design phase. The project covered both urban and suburban areas. Our multi-disciplinary team utilised UAV technology, control, topographical, and hydrographic survey methods to gather geospatial data.

Early engagement in the project allowed the team to understand technical and social requirements, with a focus on minimising public disruption. Planning involved installing control networks, obtaining necessary permissions, and dividing the topographical survey into five zones. Executing the project involved diverse survey techniques and processing the collected data using various software packages. A key lesson learned was the importance of early integration of data from different platforms for an accurate 3D model.

Contact our utilities sector lead David Graham at dgraham@murphyys.ie to find out more.

Energy

Geospatial data is integral to the construction, maintenance and retrofitting of energy facilities which needs to be carried out without causing damage or disruption to vital services. The sector is also under immense pressure to actively engage in the energy transition to meet the future demands on energy and data consumption.

We have extensive experience working in oil and gas, renewables, hydrogen, hydro and nuclear facilities.

Our solutions

Geospatial consulting -

We leverage precise location-based data through advanced technologies and processes, alongside ensuring data accuracy and compliance.

Geospatial mapping -

We capture geospatial data to provide comprehensive records and information of your asset.

Geospatial management -

Our remote monitoring tracks structural changes without wider disruption.

Geospatial engineering -

We offer end-to-end project support, bridging the gap between digital design and real-world implementation.

**Read more about
our energy
projects here.**



Case Studies

Chetwynd Reservoir Internal Inspection

We worked with Malachy Walsh & Partners to inspect the Chetwynd water reservoir in Cork City's water supply infrastructure. The inspection focused on post-tensioned concrete structures, requiring specialised skills in confined space working. To address this, we proposed a unique solution using remotely operated high-definition cameras and LED lights attached to a telescopic pole. Our specialist engineering services team, trained in rope access and confined space working, executed the project, ensuring high-quality, repeatable geospatial data.

Coordination with stakeholders was crucial as the project included emptying the reservoir. We delivered a set of high-quality photographs for an engineering assessment, contributing to the security of Cork City's water supply. This approach eliminated the need for mobile elevating work platforms or scaffolding during inspections, saving the client time and money.



Property

The built environment is the world's most valuable asset class. We bring your property portfolio assets online to bridge the gap between the physical and digital world. Geospatial data can reveal your asset's potential, identify any structural risks, and enable enhanced facilities management with a data-enabled digital twin.

Our experts will advise which geospatial solutions will help future proof assets, support retrofitting, refurbishment, change of use and ensure the most efficient use of your asset.

We have extensive experience working in commercial, public, retail and hospitality, logistics and warehousing, smart cities, residential and heritage projects.

Our solutions

Measured building survey (mbs) - Measured building surveys minimise risk, optimise efficiency, and creating an digital version of the asset.

Portfolio measurement - Digitising a portfolio accelerates data-driven decision-making, reducing site visits, informing stakeholders, and ensuring compliance.

Retrofit - Create a digital roadmap to upgrade your property.

Compliance - Ensure compliance with building and fire safety regulations that changes how you digitally interact with your asset.

Director of Property

**DIARMUID
MURPHY**

I'm Director of Property at Murphy Geospatial.

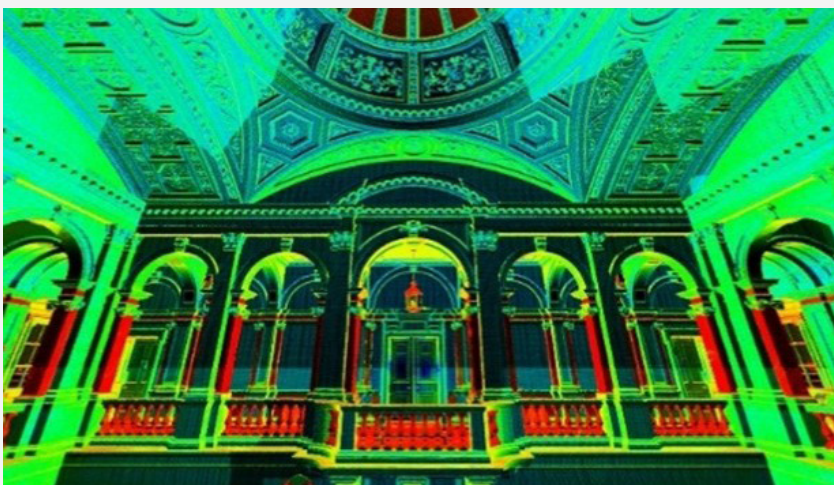
**Read more
about our property
projects here.**

Case Studies

The Old War Office

The Old War Office, in Westminster, UK was a project in collaboration with Westminster Development Services Ltd. The project involved the refurbishment and demolition of parts of the Grade II listed property that was going to be converted into a luxury hotel. We were engaged at multiple stages of the project, including covering design, strip-out, demolition, refurbishment, and construction.

Our services provided include initial scan-to-BIM models, panoramic imagery surveys, progressive BIM model upgrades, topographical and utility surveys, photographic dilapidation surveys, and as-built CAD drawings.



We used Murphy Geospatial at The OWO (Old War Office) for numerous surveys across several years of the development, and I have been impressed by their reliability and accuracy. Their wide range of services has been particularly beneficial, including BIM modelling, construction validation, photographic surveys, and utilities, and they have always delivered high-quality results. I appreciate their quick turn-around time, especially during the construction and final fit-out stages when time is of the essence, and highly recommend this company for a dependable survey service

Westminster Development Services Ltd

Contact our property sector lead Diarmuid Murphy at dmurphy@murphygs.ie to find out more.

Natural Environment

A better understanding of our natural environment using geospatial data, enables us to predict its future behaviour, allowing us to limit the impacts of flooding, coastal erosion, and deforestation.

Verified geospatial data is key to understanding these complex systems. Data-driven decision making helps protect society in a changing natural environment and restore natural landscapes.

We have extensive experience of working in flood prevention, navigation, coastal erosion, reservoir capacity, restoring, and rewilding projects.



Associate Director

I'm Paraic Quirke, an Associate Director with the company

Our solutions

Hydrographic surveys - (Currently Ireland only) - Hydrographic surveys are vital for environmental planning, and our expertise ensures clients receive well-prepared data that seamlessly integrates with modelling software.

Bathymetric surveys - These surveys provide 3D visuals to aid navigation upkeep, while pre and post dredging surveys verify quantities, payment claims, and environmental license adherence.

Aerial surveys - Aerial surveys help clients capture data non-intrusively in protected areas, protecting sensitive habitats.

Embankment surveys - Our embankment surveys and geospatial analysis ensure flood protection by pinpointing design deviations and defects for proactive maintenance.



Read more about our Natural Environment projects here.



Case Studies

OPW Flood Relief Schemes

We were a key part of the OPW Lot 1 Framework for Surveying Services and our team has successfully delivered 20+ projects for critical flood relief initiatives in Ireland. Our expertise in various surveying aspects, including survey control, topographic surveys, and post-flood recording surveys, inform and construct flood models for predicting the impact of future weather events.

The hydrographic surveying teams, equipped with diverse skills, ensured precise project delivery. The systematic process involved engaging clients through SRFT (supplementary requests for tender), clear communication, meticulous planning, execution by experienced crews, and accurate data processing. We employed robust surveying equipment, including GNSS technology and sonar methods, for accurate data capture in challenging environments.

Murphy Geospatial has undertaken 3 major CFRAMS survey contracts for us, various infill survey contracts and completed defence surveys on our behalf. I wouldn't have been happy unless Murphy Geospatial were undertaking this work as I know the levels of planning from there management team always ensure the projects run smoothly no matter how big or small. Furthermore, the survey crews on the ground collecting the data are second to none, they are not only extremely well trained, but knowledgeable as well, which gives us confidence in the survey data we receive.

RPS Group



Contact our infrastructure sector lead
Paraic Quirke at pquirke@murphygs.ie
to find out more.



Our team

Our key fundamental pillars of success

Inspired to succeed

Our team are a critical part of our success. We recruit the best staff and invest in their development, creating an environment where the team is engaged and committed to bringing our values to life, leading to consistently high staff and client satisfaction levels.

Technology and training

Using and developing the latest technology and processes is vital to the success and growth of both our clients and us. Our investment ensures we can provide a wide range of services – and train our people to use the equipment to its full potential.

Strength in numbers

Our excellent support network of employees and management demonstrates a shared passion for delivering high-quality work. They liaise closely to plan and implement our projects, sharing potential challenges and agreeing solutions at an early stage.

Open to opportunity

We are dedicated to supporting and developing our staff of over 400 professionals to enhance their technical and personal skills. The Murphy Geospatial Career Path initiative creates opportunities to help them achieve their personal and professional ambitions.

Details of our sector heads can be found in the earlier pages of this brochure and our full team biographies and contact details are available on our website here.

murphygs.com

Our executive team

Our Group Directors are the leadership team behind Murphy Geospatial fostering the culture of innovation and ambition.



Niall Murphy

Chief Executive Officer (CEO)
Founder

[Read more here](#)



Colin Murphy

Chief Business Development Officer (CBDO)
Founder

[Read more here](#)



Ray Murphy

Chief Strategy Officer (CSO)
Founder

[Read more here](#)

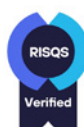
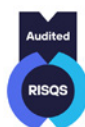


Billy Roche

Chief Operating Officer (COO)

[Read more here](#)

Our credentials



Our locations



1

Ireland Head Office

Global House
Kilcullen Business Campus
Kilcullen
R56 K376
Ireland
T: +353 (0)45 484 040
[E: info@murphygs.ie](mailto:info@murphygs.ie)

2

UK Head Office

9 Millfield House
Croxley Park
Woodshots Meadow
Watford
WD18 8YX
United Kingdom
T: +44 (0)192 362 4800
[E: info@murphygs.com](mailto:info@murphygs.com)

3

Cork

Unit 21
Airport East Business Park
Farmers Cross
Cork
T12 T256
Ireland
T: +353 (0)21 489 5704
[E: cork@murphygs.ie](mailto:cork@murphygs.ie)

4

Manchester

Unit 16a
Deanway Trading Estate
Wilmslow Road
Handforth
SK9 3HW
United Kingdom
T: +44 (0)160 626 3019
[E: info@murphygs.com](mailto:info@murphygs.com)

5

Birmingham

Unit 7
Amphion Court,
Lower Church Lane
Tipton
West Midlands
DY4 7HN
United Kingdom
T: +44 (0)121 630 3074
[E: info@murphygs.com](mailto:info@murphygs.com)

6

Dublin

Block 2
Westpoint Court Business Park
JFK Drive, Naas Road
Dublin
D12 E138
Ireland
T: +353 (0)1 690 9799
[E: info@murphygs.ie](mailto:info@murphygs.ie)

Get in touch

Ireland Head Office

T: +353 (0)45 484 040

E: info@murphygs.ie

UK Head Office

T: +44 (0)192 362 4800

E: info@murphygs.com

Website

murphygs.com

