

# Precision Drainage Solutions Powered by People, Driven by Technology

ROBOTICS | JETTING | DRONES | CCTV | DISAB | SAAS | IOT



## McBreen Enviro UK

Part of the McBreen Group



### NATIONWIDE – 24/7

01905 959 013 | [sales@mcbreenenviro.co.uk](mailto:sales@mcbreenenviro.co.uk) | [mcbreenenviro.co.uk](http://mcbreenenviro.co.uk)

# Contents



**McBreen  
Enviro UK**  
Part of the McBreen Group

***McBreen Enviro UK – your trusted partner  
for trenchless repairs, advanced drainage  
solutions, and waste management.***

<b>Industries We Serve</b>	<b>2</b>	<b>Robotics &amp; Specialist Services</b>	<b>11</b>
<b>McBreen Group</b>	<b>3</b>	Gerotto Excavators	
<b>Why McBreen Group?</b>	<b>4</b>	KOKS Storage Containers	
		DISAB Vacuum Units	
		Confined Space Services	
		Terra Jet (ATV)	
		Remote CCTV Units	
<b>Waste, Drains &amp; Sewers</b>	<b>5</b>		
Drain Cleaning & Unblocking			
High Volume Jet Vacs			
Septic Tank Cleaning, Inspection & Repairs			
Pump Station/Wet Well Services			
Sand/Carbon Removal			
ADR & Hazardous Waste			
Grease Trap Maintenance			
Mobile Dewatering Units			
D:MAX Mobile Screening Units			
<b>Trenchless Repairs</b>	<b>8</b>	<b>Surveying &amp; Mapping</b>	<b>13</b>
Localised Part-Lining		Drone Surveys	
UV Lining		Mapping & SUS Surveying	
Inversion Lining (CIPP)		Integrity Testing	
Robotic Cutting		CCTV Pipe Line Investigation & Mapping	
Top Hat Repairs		Section 102/104 Sewer Adoption	
UHP Concrete Cutting		Culvert Cleaning, Inspection & Maintenance	
Resin Injection		ROV Underwater Cameras	
Tank & Bund Relining			
Manhole/Tank Relining			
		<b>EDAC Environmental Compliance</b>	<b>15</b>
		<b>EDAC Project Management</b>	<b>16</b>
		<b>A Message from MD, Damien McBreen</b>	<b>17</b>
		<b>Key Supplier Partnerships</b>	<b>18</b>

## Industries We Serve

McBreen Enviro UK is a leading service provider across various sectors in the UK, offering tailored drainage and waste management solutions.

From large-scale industrial operations to public infrastructure and residential services, we utilise the latest technologies to ensure efficient, safe, and high-quality results.

- ✓ **Construction & Engineering**
- ✓ **Consultancy**
- ✓ **Domestic Services**
- ✓ **Hospitality**
- ✓ **Industrial**
- ✓ **Pharmaceutical**
- ✓ **Public Sector**





## McBreen Environmental

[mcbreenenvironmental.ie](http://mcbreenenvironmental.ie) / [sales@mcbreen.ie](mailto:sales@mcbreen.ie)



Established in 2006, McBreen Environmental is a trusted provider of waste management and drainage solutions across Ireland. Serving domestic, commercial, and industrial clients, we are dedicated to delivering reliable services with a focus on innovation and expertise. From rapid emergency response to complex rehabilitation projects, we offer efficient, tailored solutions to suit every need.

## EDAC Environmental Compliance

[edacenviro.com](http://edacenviro.com) / [info@edacenviro.com](mailto:info@edacenviro.com)



EDAC provides cutting-edge environmental compliance software solutions designed to help businesses maintain regulatory standards with ease and efficiency. Offering services such as asset tagging and real-time monitoring software, EDAC empowers organisations to stay compliant. As experienced Environmental Consultants and Project Managers, we ensure complete transparency and control throughout every phase of your project, from initiation to completion.

## InDepth Water Management

[indepth.ie](http://indepth.ie) / [info@indepth.ie](mailto:info@indepth.ie)



InDepth Water Management provides expert water treatment and management solutions tailored to meet the needs of industrial, commercial, and domestic clients. With a focus on sustainability and efficiency, we offer a range of services including water treatment systems, compliance support, risk management, and system monitoring. Our team uses the latest technology and industry best practices to ensure reliable, cost-effective, and environmentally responsible solutions, helping businesses optimise water use while meeting regulatory standards.

## Breffni Organics

[breffniorganics.ie](http://breffniorganics.ie) / [sales@mcbreen.ie](mailto:sales@mcbreen.ie)



Breffni Organics is the McBreen Group's dedicated waste facility, showcasing our commitment to environmental sustainability. Through innovative dewatering and composting processes, we reduce waste and transform it into compost, which fertilises willow crops – a renewable source of bioenergy. As one of Ireland's pioneering drainage companies to offer this service, the McBreen Group is proud to adapt to the evolving needs of our customers.



# Why McBreen Group?



## MULTIDISCIPLINARY SOLUTIONS

Our team combines expertise across various fields, allowing us to offer a holistic approach to every project. From drainage maintenance and repairs to waste management, integrity testing, and environmental compliance, we ensure seamless solutions tailored to your specific needs, minimising the need for multiple service providers.



## CLIENT RELATIONSHIPS

At the heart of everything we do is our commitment to building strong, long-lasting client relationships. Whether you're managing a residential property or overseeing a large-scale commercial operation, our focus is on a personalised service, combined with expert knowledge.



## TRENCHLESS TECHNOLOGY

Our innovative trenchless technology enables us to deliver cost-effective, efficient solutions with minimal disruption. Using advanced methods such as CIPP relining and robotic cutting, we are able to repair and rehabilitate infrastructure without the need for extensive excavation. This approach not only saves time and money but also preserves your property and the surrounding environment.



We take pride in our commitment to the highest standards within the drainage industry at McBreen Enviro UK, ensuring that our services meet your expectations for quality and professionalism.



# Waste, Drains & Sewers

By combining expertise with cutting-edge tools, we deliver solutions that prioritise durability, reliability, and long-term efficiency for your drainage systems. With regular maintenance options available, we help prevent future blockages and keep your drains clear, compliant, and functioning at their best.



## DRAIN CLEANING & UNBLOCKING

Designed to ensure your drainage systems operate efficiently and without interruption. Using advanced high-pressure jetting and vacuum technology, we tackle blockages caused by grease, debris, or tree roots.



## HIGH VOLUME JET VACS

Our fleet features High-Volume Jet Vac vehicles equipped for high-pressure jetting while simultaneously vacuuming sludge, silt, and grease. These vehicles also include recycling capabilities, allowing them to reuse water during operations, improving efficiency and sustainability.



## SEPTIC TANK CLEANING, INSPECTION & REPAIRS

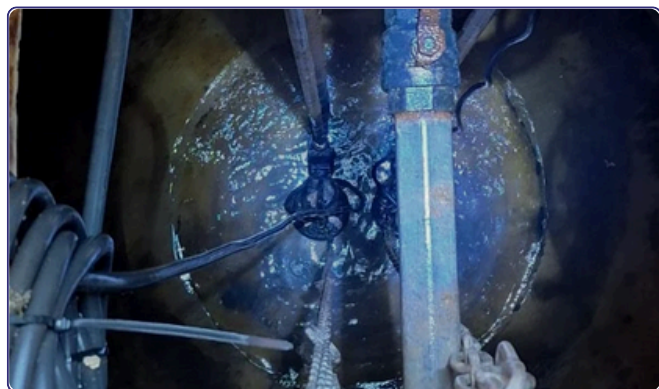
Enjoy peace of mind knowing that your waste is disposed of in an environmentally responsible manner, in line with sustainability standards.



# Waste, Drains & Sewers

Our comprehensive waste removal and maintenance services cater to a wide range of needs, from routine cleaning to addressing complex challenges.

Using state-of-the-art equipment, we handle sludge, silt, grease, and hazardous waste with precision and care.



## **PUMP STATION/WET WELL SERVICES**

We offer a full range of services including cleaning, waste removal, pump replacement, and 24-hour SCADA monitoring to ensure your systems remain operational and efficient at all times.



## **SAND/CARBON REMOVAL**

We specialise in the safe and efficient removal and disposal of sand and carbon in compliance with environmental regulations. Whether for routine maintenance or system upgrades, we ensure minimal disruption and safe handling, helping your filtration system run at optimal efficiency.



## **ADR & HAZARDOUS WASTE**

We provide expert management, transportation, and disposal of hazardous waste nationwide, ensuring compliance with all safety and environmental regulations.

# Waste, Drains & Sewers

We specialise in restoring drainage systems to optimal condition with minimal disruption. Our tailored rehabilitation services address structural issues, enhance system performance, and extend the lifespan of your drains.



## GREASE TRAP MAINTENANCE

Our grease trap cleaning and maintenance services effectively remove grease waste, preventing it from entering sewer systems and ensuring smooth, compliant operations.



## MOBILE DEWATERING UNITS

Our self-contained Mobile Dewatering Units offers an efficient, on-site solution for reducing sludge volumes by up to 80%. Ideal for wastewater treatment plants, septic tanks, grease traps and more, the system separates solids from liquids, returning filtered water to the source and leaving dry sludge (up to 25%) ready for disposal.



## D:MAX MOBILE SCREENING UNITS

Mobile solution for sludge, grit, and screening waste. Reclaims up to 80% of grit and recovers up to 90% of total waste for reuse. Cuts landfill and transport costs by treating waste where it's generated, boosting sustainability on-site. Flexible hire options available.



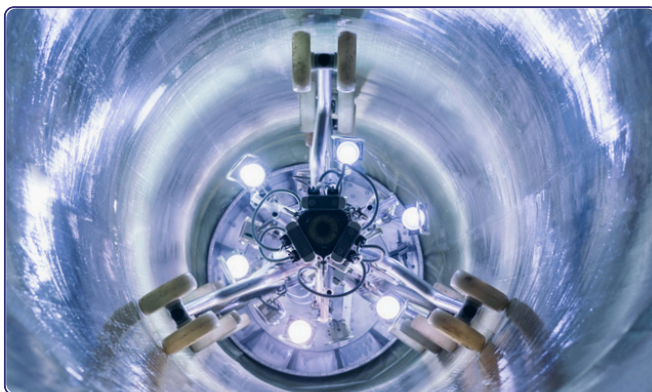
# Trenchless Repairs

Our services include assessments to identify issues such as cracks, deformities, or joint misalignments. Using state-of-the-art technology like robotic cutters and precision relining systems, we can address even the most complex drainage problems.



## LOCALISED PART-LINING

Our localised part liner repairs offer a cost-effective and non-invasive solution for addressing pipe defects. By accessing the damaged area from a single point, we minimise disruption and avoid unnecessary excavation. This method is ideal for swiftly repairing fractures, cracks, infiltration, and other common defects in most pipe materials.



## UV LINING

UV lining is a specific type of CIPP relining where the liner is cured using ultraviolet (UV) light. This method offers faster curing times and greater control over the process, resulting in a stronger, more durable pipe lining. It's ideal for projects where minimising downtime is critical.

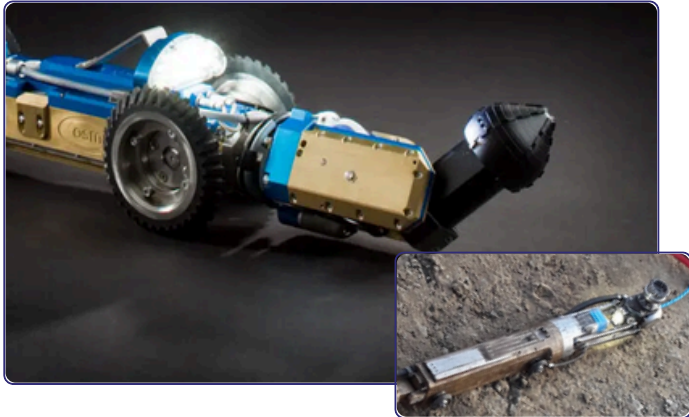


## INVERSION LINING (CIPP)

Inversion Cured-In-Place Pipe (CIPP) relining is a trenchless method that inserts a resin-saturated liner into a damaged pipe. The liner is then cured to form a seamless, jointless pipe, restoring functionality. Used for water, sewer, gas, and chemical pipelines, CIPP provides cost-effective, solutions with minimal disruption and excavation.

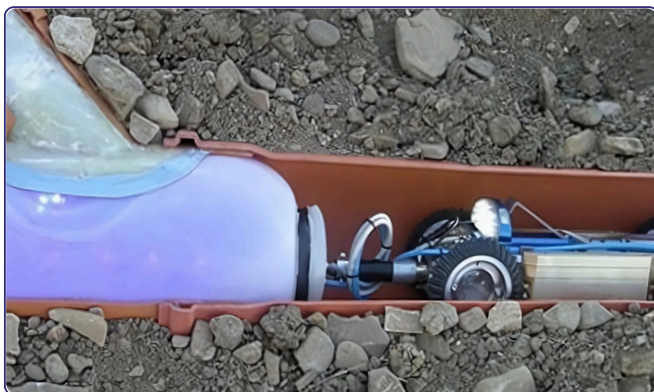
# Trenchless Repairs

Drain rehabilitation is essential to maintaining the integrity and efficiency of your drainage systems. We specialise in advanced, non-invasive rehabilitation techniques to restore and strengthen drains.



## ROBOTIC CUTTING

Our advanced robotic cutters bring precision and innovation to drain rehabilitation. Designed for versatility, it navigates pipes with ease to remove obstructions and prepare surfaces for relining.



## TOP HAT REPAIRS

Our Top Hat System offers a specialised solution for lateral sewer repairs, designed specifically for connections and short repairs. These resin systems are easy to handle, allowing for fast and efficient installation with minimal disruption. Once cured, they provide excellent mechanical strength and chemical resistance, ensuring long-lasting results.



## UHP CONCRETE CUTTING

Our concrete removal technique uses water pressure of up to 40,000 psi to effectively clear concrete and hard deposits in drains from 150mm to 1100mm. This high-pressure water jetting method is precise and efficient, allowing for safe removal without damaging the integrity of the drain.



# Trenchless Repairs

Trenchless repairs are an innovative solution for restoring damaged pipelines without the need for disruptive excavation. This approach ensures durable, cost-effective results with minimal impact on surrounding environments.

---



## RESIN INJECTION

Our resin injection service involves injecting high-quality polyurethane resin into the structure, effectively stopping leaks and providing a durable structural membrane behind the chamber to enhance its integrity and prevent further damage.



## TANK & BUND RELINING

Our tank and bund relining services involve the use of high-powered jetting to thoroughly clean surfaces, followed by the application of durable materials using a concrete mortar sprayer. This process ensures a strong, protective lining that enhances the structural integrity and prevents leakage, safeguarding your assets and the environment.



## MANHOLE/TANK RELINING

Relining ensures complete protection against water infiltration or exfiltration, while also making pipes resistant to corrosion.

# Robotics & Specialist Services

With our advanced technology and skilled team, we ensure the safe, efficient removal of wet and dry waste, while providing ongoing maintenance services that keep your systems operating smoothly and in full compliance with industry standards.



## GEROTTO EXCAVATORS

Our remotely operated equipment provides precise control within confined spaces, offering a safer and more efficient solution, especially in tanks with heavy sludge accumulation where manual access poses high risks.



## KOKS STORAGE CONTAINERS

Whether it's an unforeseen environmental emergency or a complex industrial cleaning project, our KOKS temporary storage container is equipped to hold up to 86,000 litres.



## DISAB VACUUM UNITS

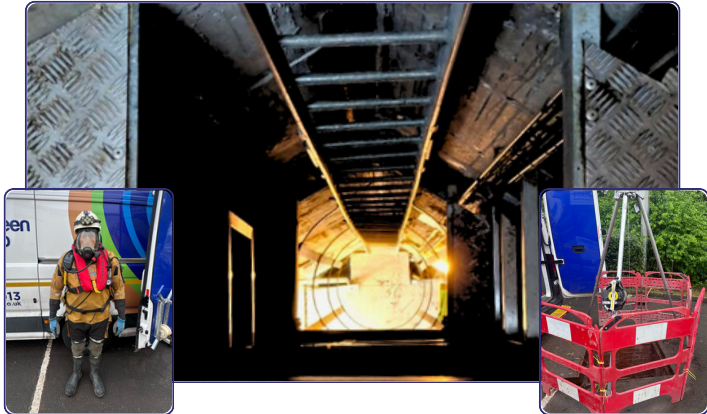
Equipped with DISAB vacuum technology, we are capable of efficiently removing all types of wet and dry sludge, slurry, filter cakes, sediments, as well as powders, granular materials, aggregates, ash, and soil.





# Robotics & Specialist Services

With state-of-the-art equipment and fully trained technicians, we ensure your company remains fully compliant while performing cleaning and maintenance services.



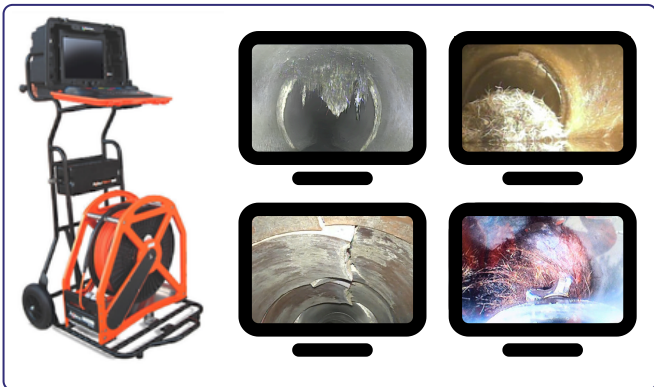
## CONFINED SPACE SERVICES

Our confined space services ensure safe, compliant entry, work, and rescue. We provide expert consultancy, risk assessments, rescue planning, and compliance audits. Our entry teams handle inspections, maintenance, debris removal, and installations, while our rescue teams offer standby support and emergency response.



## TERRA JETS (ATV)

Equipped with advanced water jetting technology, the Terra Jet's compact design enables it to navigate confined spaces with ease. Its high-pressure jetting capability ensures thorough removal of debris, grease, and other blockages without causing damage to the pipe infrastructure.



## REMOTE CCTV UNITS

Our advanced CCTV units are operated remotely, allowing a highly trained operative to control the camera's movement and direction with precision. This enables thorough inspection of the entire length of the drainage system, ensuring no area is overlooked.

# Surveying & Mapping

Comprehensive surveying is the foundation of effective drainage management. Accurate evaluations captured using drones, CCTV, and advanced scanning tools enable precise diagnosis and efficient planning, ensuring your infrastructure remains reliable, safe, and compliant.

---



## DRONE SURVEYS

Our drone enables safe inspections in confined or hazardous environments, capturing high-resolution imagery and 3D LiDAR mapping, without the need for manned entry. Ideal for tanks, culverts, and complex infrastructure, it reduces risk, minimises downtime while delivering accurate, actionable insights.



## MAPPING & SUS SURVEYING

Our surveying services include:

- STC/SUS Surveying
- Infonet Services
- GPS/GPR Surveying
- Drainage & Services Mapping

Each of these advanced techniques helps to provide accurate assessments and detailed mapping for optimal drainage management and maintenance



## INTEGRITY TESTING

Ensures the reliability of your drainage systems. We offer spark, air pressure, hydrostatic testing, and assessments by a Chartered Engineer. After repairs, we perform thorough post-repair testing to guarantee a 100% integrity pass, ensuring compliance, safety, and long-lasting performance.





### **CCTV PIPE LINE INVESTIGATION & MAPPING**

We assess the condition of drains to identify issues such as damaged joints, cracks, deformities, obstructions, or problems with pipe gradient.



### **SECTION 102/104 SEWER ADOPTION**

We provide expert guidance and support through every stage of the adoption process, from initial assessments to compliance with regulatory standards. Our team ensures that all systems meet the required specifications, making the transition smooth and hassle-free.



### **CULVERT CLEANING, INSPECTION & MAINTENANCE**

Our culvert inspection services involve thorough assessments using advanced technology to identify any structural issues, blockages, or signs of deterioration. We ensure the safety and functionality of culverts by providing detailed reports and recommendations for necessary repairs or maintenance.

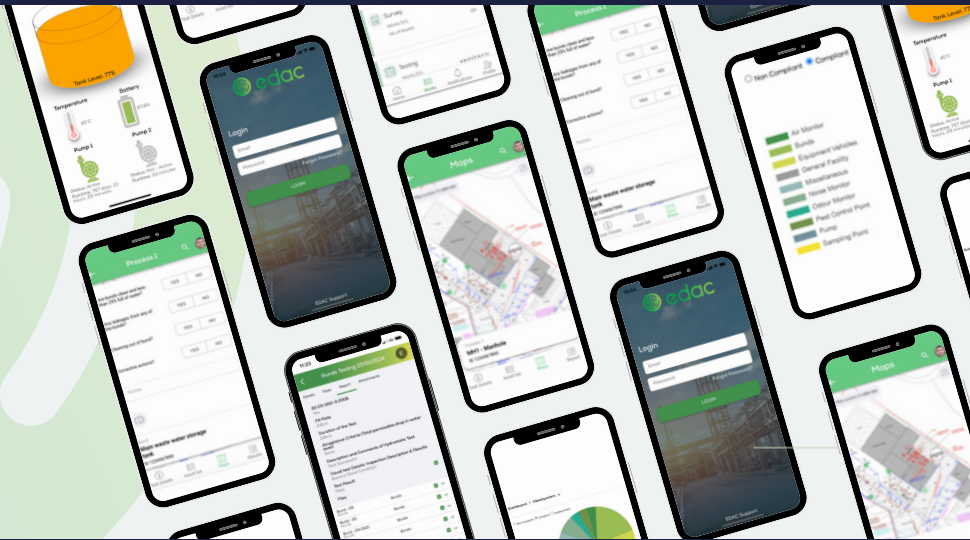


### **ROV UNDERWATER CAMERAS**

Using specialised underwater ROV (Remotely Operated Vehicle) cameras, we identify structural issues within reservoirs. Our services include comprehensive cleaning, restoration, and repair work.

## Simplify Your EHS Management

Stay ahead of regulations, reduce paperwork, and streamline processes with EDAC's software solution. Our efficient tools and expert support help you maintain compliance and avoid costly mistakes.



# ENVIRONMENT | DATA | ASSET | COMPLIANCE

### **EDAC isn't just software – it's your complete solution for environmental compliance.**

We combine Environmental Consultancy, Project Management, and innovative tools to tackle every aspect of compliance, health and safety, and operational efficiency across your organisation.

Our team works closely with you to develop tailored EHS strategies, seamlessly integrating asset tagging, IoT solutions, and facilities management. The EDAC platform centralises these processes, automating compliance reporting, tracking regulatory requirements, and delivering real-time data insights to keep you in control.

From managing environmental compliance and on-site projects to improving operational efficiency, EDAC ensures your business stays compliant, efficient, and prepared for anything.

Let us handle your compliance challenges so you can focus on what matters most – your business.



#### **Cloud Based Solution**

Designed to suit a mobile workforce regardless of location – access your data from anywhere.



#### **Custom Built**

Built from the ground-up for compliance, get a solution tailored for your needs.



#### **Scalable and Secure**

Our software runs on Microsoft Azure to deliver at speed without compromising on security.



#### **Instant Notifications**

Get alerted to maintenance tasks and compliance risks with customised alerts – all in real-time.



#### **Paperless Management**

Store and manage all your compliance documents in a centralised system.



#### **Streamlined Collaboration**

Share across your organisation with a click, with notifications at every stage.



#### **Operations & Task Management**

Digital task management to ensure timely testing and reporting.



# PROJECT MANAGEMENT



At McBreen Enviro UK, we work with EDAC to help manage your projects efficiently from start to finish. Their platform supports our team in planning, tracking, and reporting every stage of the job, making sure everything runs smoothly, stays compliant, and keeps you informed at all times.

**1 Project Management:** EDAC seamlessly manages your projects with real-time updates, centralised documentation, and progress tracking, all accessible through your customised EDAC portal, giving you easy access to everything you need.

**2 Getting Started:** Work closely with the contractor to define your project needs and connect with your dedicated EDAC Project Manager. Align on scope, timelines, and expectations during a comprehensive project kick-off meeting.

**3 Project Execution:** All project details, including scope of works, timelines, site maps, and documents, are centralised on the EDAC portal. Drone footage is uploaded for seamless access. As work begins, progress is tracked live through the portal and expertly managed by your dedicated EDAC Project Manager.

**4 Project Completion:** Access a detailed end-of-project report directly through the EDAC portal, ready for download.

**5 Ongoing Compliance Made Easy:** Continue managing EHS tasks and maintaining compliance, keeping your site audit-ready for a convenient monthly fee.



# A Message from Damien McBreen, Managing Director



*"At McBreen Group, our customers are at the heart of everything we do. Since expanding into the United Kingdom in 2023, we've been dedicated to delivering reliable, innovative, and sustainable drainage solutions that meet the unique needs of every client we serve.*

*Building on over 19 years of expertise from McBreen Environmental in Ireland, we pride ourselves on providing tailored services across a range of industries, including industrial, commercial, and public infrastructure.*

*Whether it's routine maintenance or large-scale, complex operations, we approach every project with the same focus: to deliver effective, efficient, and lasting solutions for our clients.*

*Our skilled team of technicians use cutting-edge technology, such as trenchless solutions, robotic cutting systems, and Gerotto units for confined space cleaning. With the support of our advanced fleet, including DISAB vacuum trucks and high-volume jet vacs, we're fully equipped to handle projects of all sizes.*

*We also take pride in holding ISO certifications in Environmental (14001), Quality (9001), and Health and Safety (45001), reflecting our commitment to the highest standards of service and care for our customers and the environment.*

*At McBreen Group, we don't just solve problems – we build partnerships, focusing on delivering solutions that make a difference.*

*Thank you for choosing McBreen Group."*



# Key Supplier Partnerships

We work with a wide range of industry-leading suppliers to ensure the highest quality – here are just a few of the key names we collaborate with.

## Driving innovation in trenchless repairs with



## Proud member of



Corporate Plus Member UK0568



# McBreen Enviro UK

LEADING THE WAY TO A BETTER ENVIRONMENT



Follow us on LinkedIn.



Visit our website.

## McBreen Enviro UK

Unit 14 North Works, Bromyard Business Park, Bromyard Road, Worcester, WR2 5XU  
Unit 3G11, Lyncastle Way, Barleycastle Lane, Appleton Thorn, Warrington, WA4 4ST

**Phone:** 01905 959 013 **Email:** [sales@mcbreenenviro.co.uk](mailto:sales@mcbreenenviro.co.uk)  
**[mcbreenenviro.co.uk](http://mcbreenenviro.co.uk)**