



Communications Challenges facing today's Utilities



Today's Utility



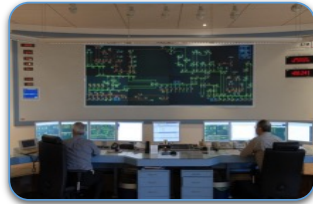
AMI



Disaster Recovery



Distribution Automation



Management Center

Substation Communications



Field Force



Challenges?



- What are my technology choices?
- I need real-time connectivity?
- How secure is my data?
- Can I remote manage my assets?
- What's the commercial model?
- Is there equipment available?
- How can I keep this project within budget?



Agenda



- Introduction to Galaxy 1
- Utility Portfolio
- Galaxy 1 Value Added Services
- Security
- Support



Galaxy 1 – Who are we?

- Founded in April 2005
- Core business is integration of:
 - Airtime services
 - Equipment
 - Software platforms
 - Consultancy
- Key distinguisher:
 - In depth technical expertise,
 - development of value added services (innovation)
 - online billing and management
- Geographical presence:
 - US (Fort Lauderdale, Dallas)
 - Europe (London UK, Worden Netherlands)
 - Singapore



Galaxy 1 – Our Focus



- Connectivity solutions
- Cell / L & S – Band / KU / KA
- Partners & integrators
- Close partnerships with hardware suppliers
- Global presence
- Technology focused
- Security standards
- Commercial distinction between standard and secure networks
- Multiple sectors

Utilities, Oil & Gas, Media, Environmental, NGO, Rail & Mining.

Inmarsat– Global Satellite Footprint

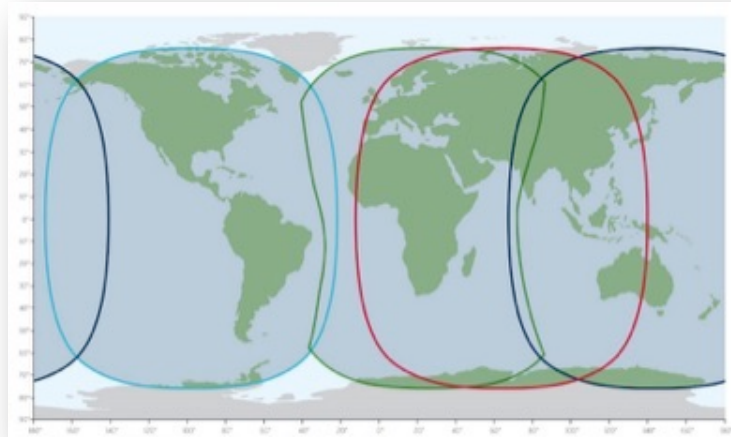


Inmarsat-4 network

L-band (1.5GHz)

4 satellites

3G IP platform

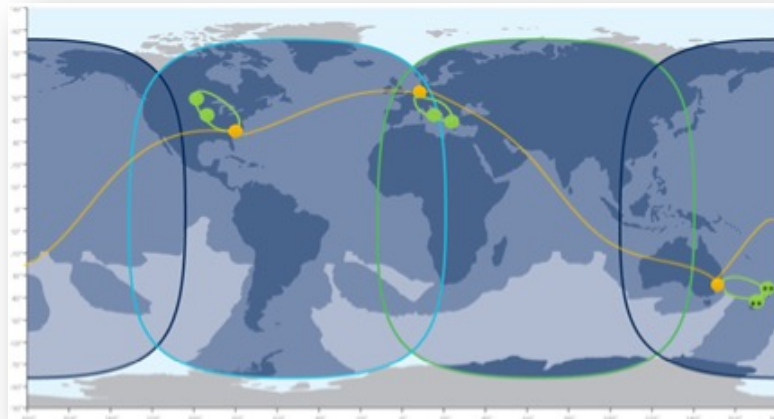


Inmarsat-5 network

Global Xpress

Ka-band (29GHz)

3+1 satellites



Galaxy 1 – Utility Product Portfolio



BGAN
BGAN M2M
BGAN Link



- Standard IP data up to 464 kbps
- 3GPP with global L-band (I-4) coverage
- Single global SIM, no roaming fees
- Remote terminal management
- For real-time surveillance, high-volume metering and telemetry.
- Hybrid Communications

BGAN PTT



- Standard IP data up to 464 kbps
- 3GPP with global L-band (I-4) coverage
- Single global SIM, no roaming fees
- Remote terminal management
- For real-time surveillance, high-volume metering and telemetry.



IsatData Pro



- Event-based messaging with latency < 30s
 - Store & forward up to 10 kB (< 1kbps)
 - Embedded application capability
- Single global device, no SIM, no roaming fees
- RESTful APIs for secure exchange of data

Hybrid communications



**The power of satellite
and cellular
communications
in one device
with one IP address**

Requirements from users with critical infrastructure:

- Two independent data paths that automatically fail-over
- One IP address for RTU or end device
- Independent of individual cellular operators



One device, two airtime services



Cobham 540

- BGAN M2M and Galaxy 1 global cellular roaming data
- Automatic failover
- Integrated 2G/3G/LTE modem
- IP66 - no enclosure needed
- Power over Ethernet (PoE) and 10-32 VDC input
- Remote terminal management in RTM



Galaxy 1 are providing solutions for the following Utility applications:

- Field-Force Automation
- AMI
- Distribution Automation
- Sub-Station Automation
- Disaster Recovery



Existing utility customers





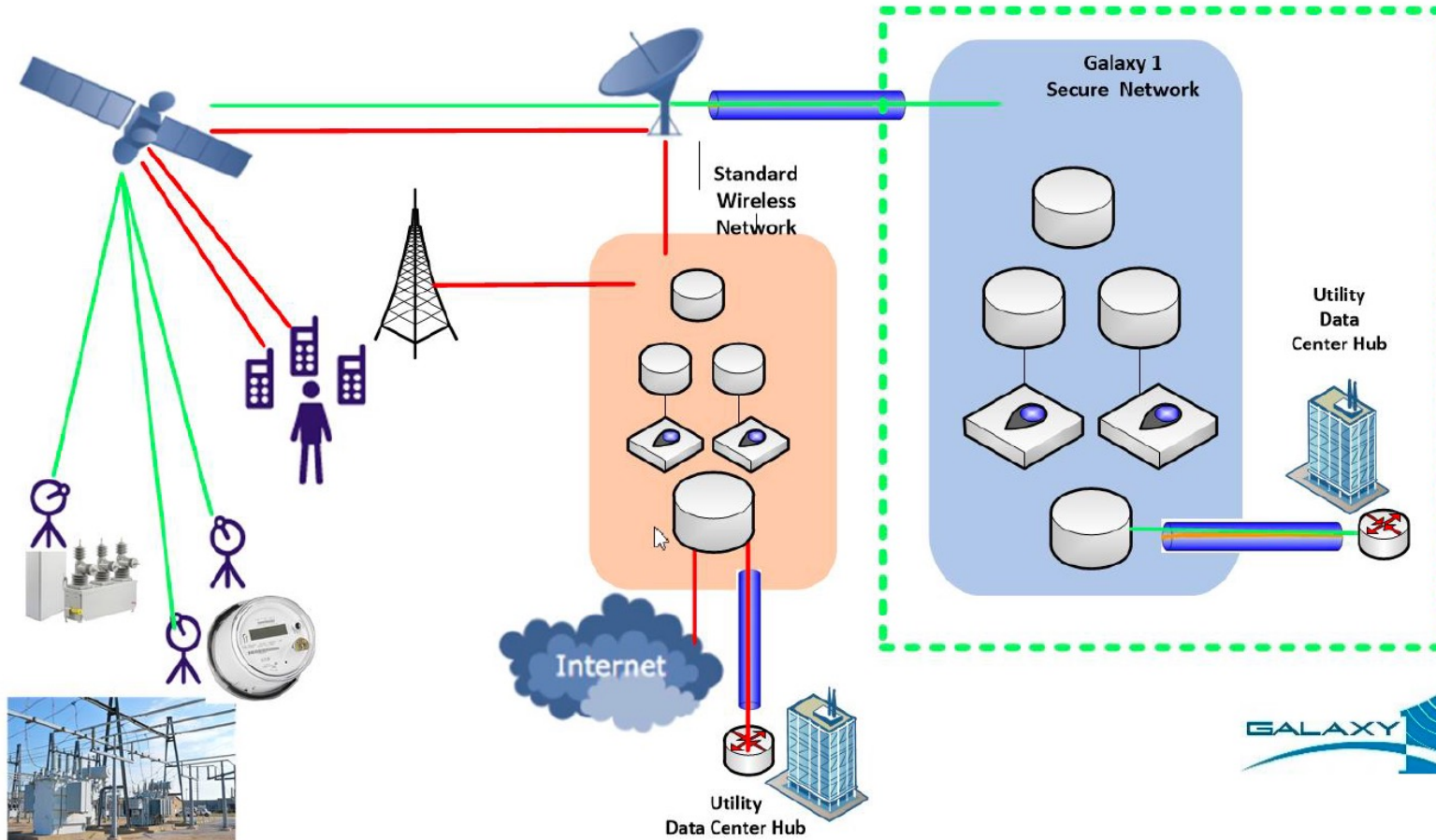
Value Added Services from Galaxy 1



Galaxy 1 – Security

- Galaxy 1 offers a dedicated network designed for Utility customers
- Private Network with no Internet Ingress
- Dedicated customer APN's for added security and traffic separation
- Network designed towards various standards:
 - Nerc, Ferc, ISO, NIS Directive, SOC 2
- Value Added Services can be bypassed
- Two factor authentication
- Closed User Groups
- Proactive monitoring and alerts
- Advanced Cyber Security monitoring tools
- New Houston POP located on secure US air force base

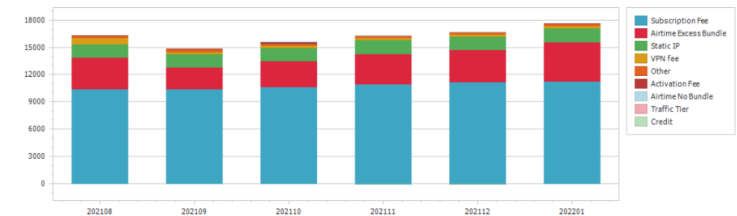
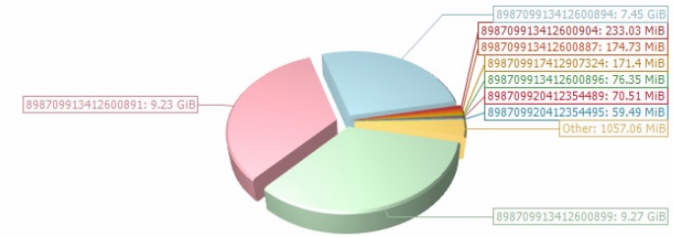
Secure Satellite Network for critical infrastructure

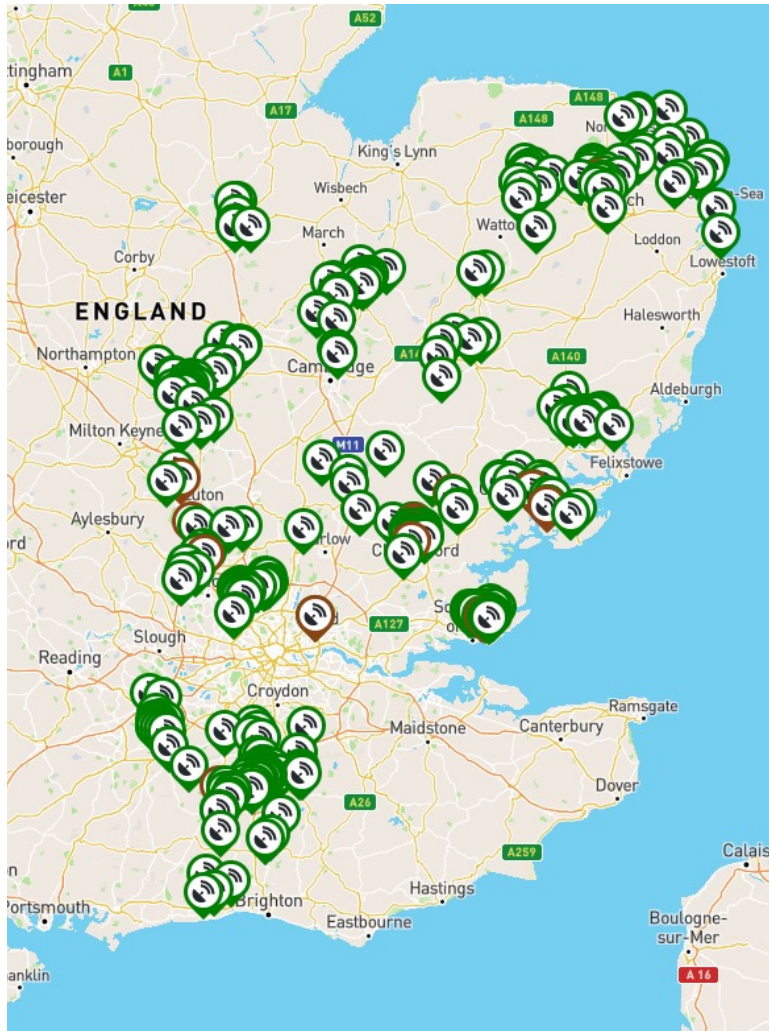


Billing & Provisioning – IBIS



- Realtime provisioning into operators for both satellite & cellular
- Sim card set up & configuration onto customer's network
- Realtime CDR's for usage monitoring & alerting
- Multiple alerts to prevent bill shock
- Cost Centre structure for accurate cost allocation
- Automated billing process for accurate on time invoices
- Multi layered user access
- User friendly interface
- Detailed Reporting
- Support trouble ticket system





Remote Terminal Manager – RTM

- Ability to manager and control assets from your desktop
- Check status of terminals
- Check status & statistics of your end-to-end network
- Update configuration of terminals
- Update Firmware
- Asset tracking including location
- Provides usage overview
- Ideal for troubleshooting
- Shows Hybrid information on which Network is in use
- Proactive alerting

- 📷 Upload Picture
- 🔒 Change Password
- 🔍 Look up in IBIS
- 📱 Send SMS
- 🔌 Connect
- 🔌 Disconnect
- 🔌 POP Disconnect
- 🔄 Reboot
- 📄 Retrieve ARP Table
- 📊 Status and GPS Report
- 👤 Remote Web Admin
- 📄 Load Firmware
- 📄 Retrieve File
- ⚙️ Update configuration
- 📶 Set APN



Utility Deployments from Galaxy 1

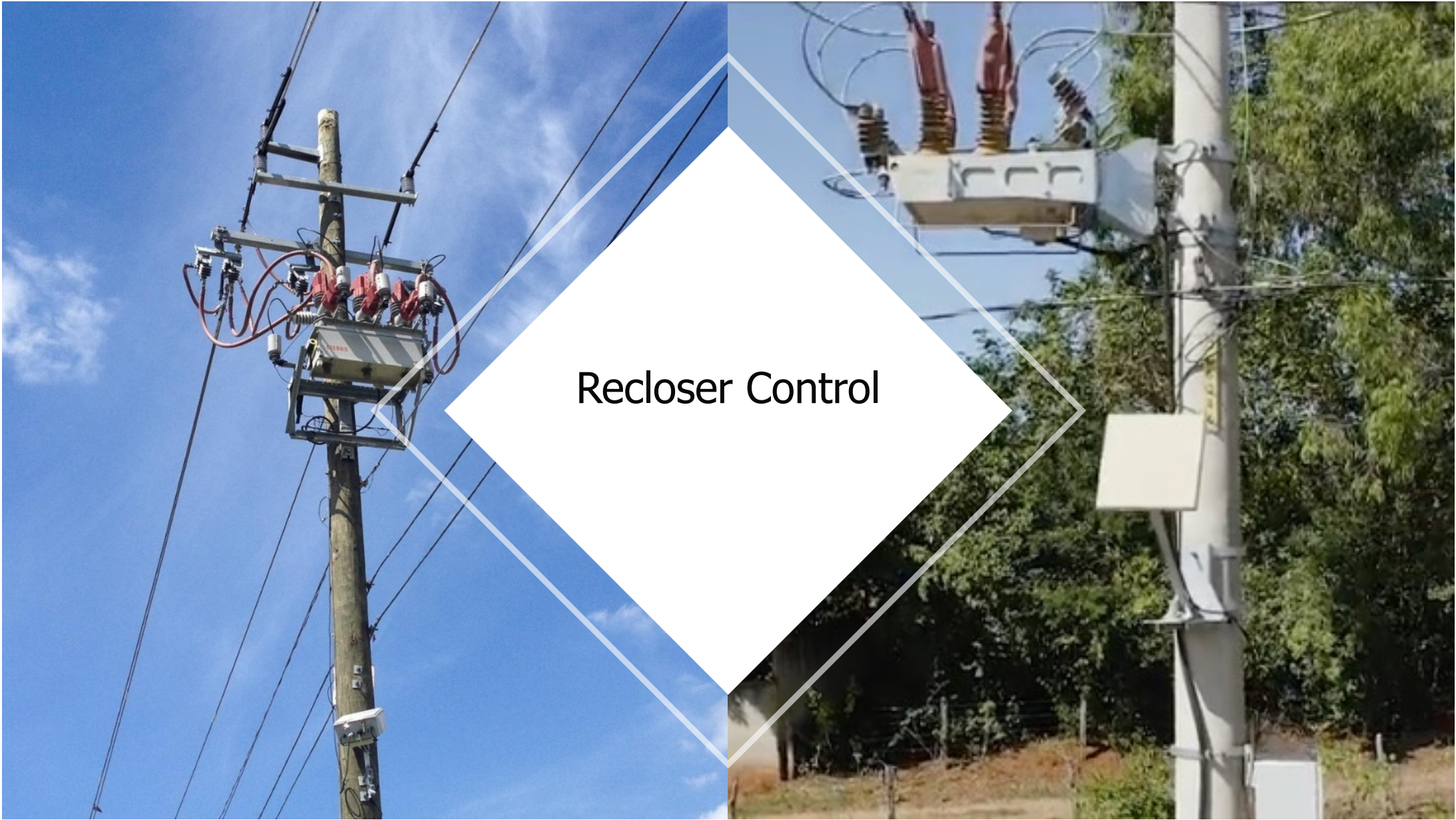


Field-force



BGAN





Recloser Control

The image is a composite of two photographs of utility poles with smart meter backhaul equipment. The left photograph shows a close-up of a utility pole with a grey transformer at the top, a grey meter box with a yellow 'CAUTION' label, and a white weatherproof enclosure with two antennas mounted below. The right photograph shows a utility pole with a grey transformer, a white weatherproof enclosure with a flat-panel antenna mounted on top, and another white weatherproof enclosure below. The background of the right photo is a snowy residential street. A large white diamond shape is overlaid in the center of the image, containing the text 'Smart Meter Backhaul' in bold black font.

Smart Meter Backhaul



**Sub Station
Connectivity**



Disaster Recovery

Galaxy 1 – Support



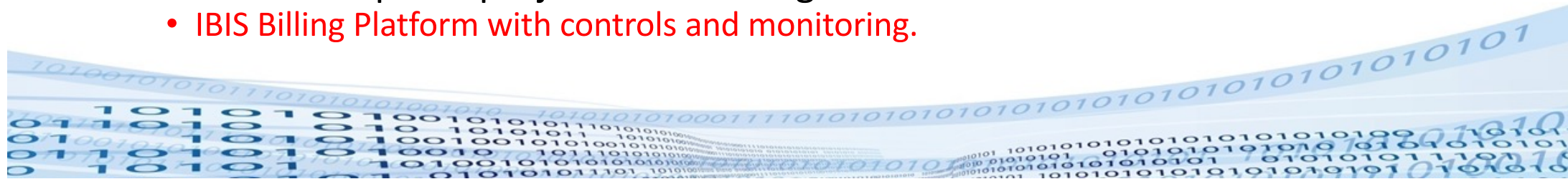
- Galaxy 1 offers 24 / 7 support to its customer globally
- Support levels tailored to customers requirements
- ITIL applied in line with the satellite industry support standards
- In-house system (IBIS) for creating, monitoring and tracking of support tickets
- Ticket Types
 - Incident
 - Service Requests - (Provisioning)
 - Change Requests
- Incident Classification





Challenges?

- What are my technology choices?
 - Hybrid Communications.
- I need real-time connectivity?
 - Real Time and Store & Forward.
- How secure is my data?
 - Private Network Designed for Utilities.
- Can I remote manage my assets?
 - Remote Terminal Manager.
- What's the commercial model?
 - Flexible Pricing options across the Utility via IBIS.
- Is there equipment available?
 - Equipment stocks are now increasing.
- How can I keep this project within budget?
 - IBIS Billing Platform with controls and monitoring.





Questions?

Booth: 325

sales@g1sat.com

Singapore Office

+ 65 69067517