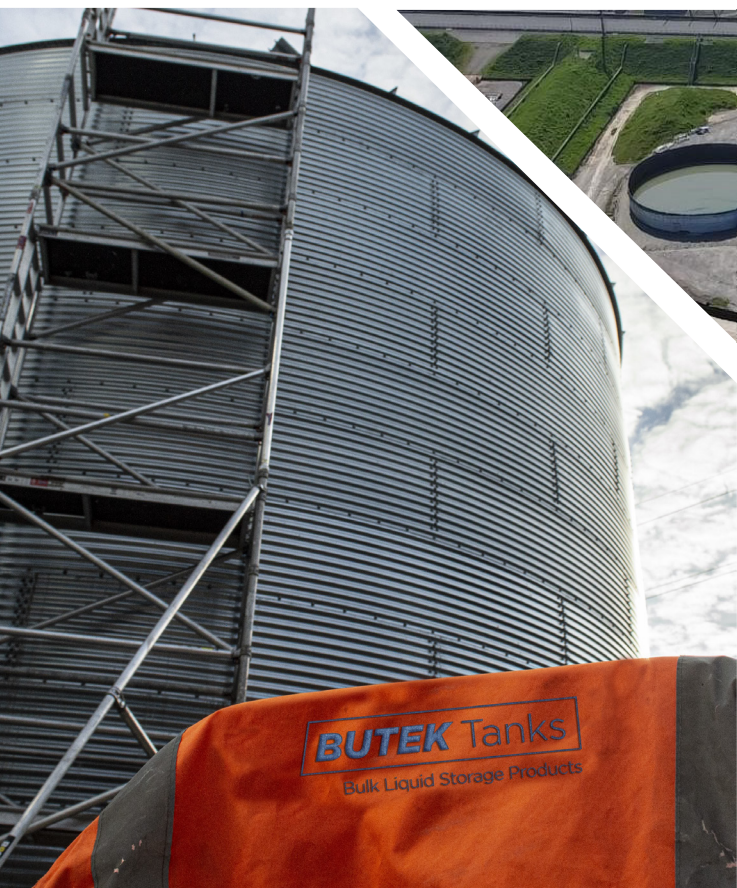


BUTEK Tanks

A specialist division of Butyl Products Ltd



Introduction

Butek Tanks is a specialist division of Butyl Products Ltd est. 1965, focusing on the supply and installation of liquid containment steel storage tanks.

Our steel water storage tanks are a versatile storage solution designed for both residential and industrial applications with capacities ranging from 2m³ to 2500m³.

The tanks are modular and consist of interlocking corrugated steel panels (steel kit), an impermeable liner (liner kit), for drinking water (DWI) and wastewater applications with various covering options (roof kit). The modular design allows for ease of transport as well as assembly and disassembly into its constituent parts to be re-erected at a new location. Ideal for temporary storage solutions.

One of the key capabilities of a steel water tank is its scalability. Not only can the tanks diameter and height be altered to suit space constraints whilst maintaining the required capacity, but each tank can be linked to another, enabling larger volumes of water to be stored within a system.

We can offer a comprehensive service in which we supply and install each tank using fully trained and certified staff and technicians to suit site requirements.



Size Guide

The below table shows the capacities of our standard size tanks inclusive of a 150mm freeboard to prevent overspilling. More sizes are available upon request, we have supplied and installed tanks up to 40.23m (132ft) in diameter and others up to 12 rings high (9.12m/ 30ft). Via www.butektanks.com you can access the interactive version with options to modify the freeboard.

		Height						
Dimensions		1 ring	2 rings	3 rings	4 rings	5 rings	6 rings	
(ft)	(m)	2.5ft/ 0.76m	5ft/ 1.52m	7.5ft/ 2.28m	10ft/ 3.05m	12.5ft/ 3.81m	15ft/ 4.57m	
Diameter	6	1.83	2m³	4m³	6m³	8m³	10m³	12m³
	9	2.74	4m³	8m³	13m³	17m³	22m³	26m³
	12	3.66	6m³	14m³	22m³	30m³	38m³	47m³
	15	4.57	10m³	23m³	35m³	48m³	60m³	73m³
	18	5.49	14m³	32m³	51m³	69 m³	87m³	105m³
	21	6.40	20m³	44m³	69m³	93 m³	118m³	142m³
	24	7.32	26m³	58m³	90m³	122 m³	154m³	186m³
	27	8.23	32m³	73m³	114m³	154 m³	195m³	235m³
	30	9.14	40m³	90m³	140m³	190 m³	240m³	290m³
	33	10.06	48m³	109m³	170m³	230 m³	291m³	351m³
	36	10.97	58m³	130m³	202m³	274 m³	346m³	418m³
	39	11.89	68m³	152m³	237m³	322 m³	406m³	491m³
	42	12.80	78m³	177m³	275m³	373 m³	471m³	569m³
	45	13.72	90m³	203m³	315m³	428 m³	541m³	653m³
	48	14.63	103m³	231m³	359m³	487 m³	615m³	743m³
	51	15.54	116m³	260m³	405m³	549 m³	694m³	838m³
	54	16.46	130m³	292m³	454m³	616 m³	778m³	941m³
	57	17.37	145m³	325m³	506m³	686 m³	867m³	1047m³
	60	18.29	160m³	360m³	561m³	761 m³	961m³	1161m³
	63	19.20	177m³	397m³	618m³	838 m³	1059m³	1280m³
	66	20.12	194m³	436m³	678m³	921 m³	1163m³	1405m³
	69	21.03	212m³	477m³	741m³	1006 m³	1271m³	1535m³
	72	21.95	231m³	519m³	808m³	1096m³	1384m³	1673m³

Steel Kit



The corrugated steel wall panels are manufactured from Magnelis® Steel which is three times more corrosive resistant than standard galvanised steel and even possesses the ability to self-heal.

The steel kit includes:

- ✓ Corrugated steel wall panels of varying thicknesses (dependant on tank size).
- ✓ Anchor Brackets to fix the bottom ring to the tank base.
- ✓ Arno-shield hardware (nuts, bolts, and washers) to connect each panel.

Customisation

An architectural grade polyester-based powder coating can be applied to the corrugated steel, increasing corrosion resistance and durability. This is available in a variety of colours, allowing you to customise the tank to your aesthetic preference.



RAL 6031 & RAL 1001



RAL 5015



RAL 2002

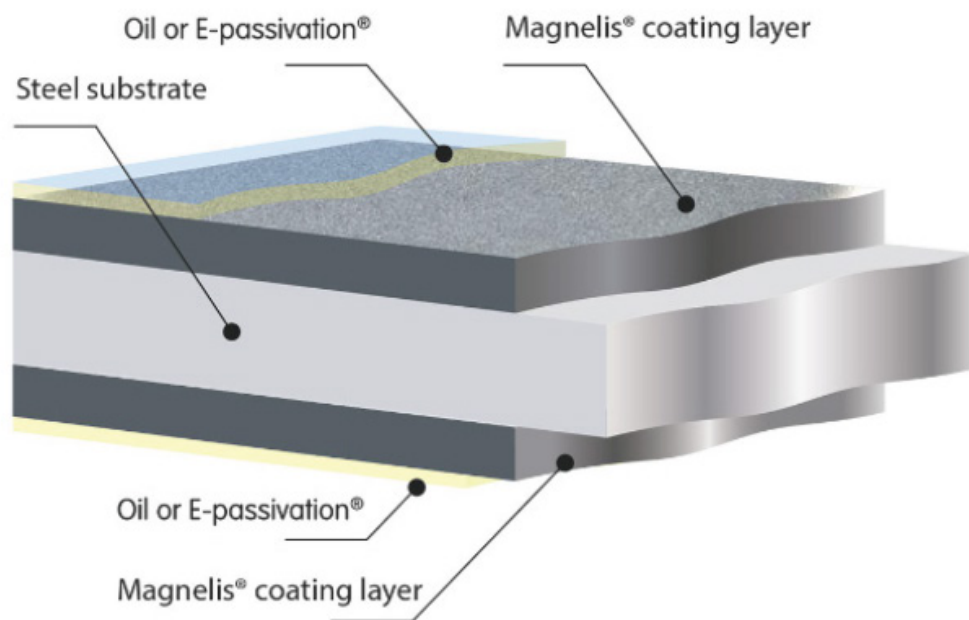


RAL 6007

Steel Kit

What is Magnelis®?

This innovative coating comprises a metallic Zinc base infused with 3.5% Aluminium and 3% Magnesium, creating a formidable shield against the harshest of environments, including chloride, ammonia, and highly alkaline conditions.



Magnelis® Benefits:

1. Zinc-Aluminium-Magnesium Coating:

This unique alloy provides unparalleled corrosion resistance, leaving traditional zinc and galvanised coatings in the dust.

2. Self-Healing Properties:

Magnelis® possesses a remarkable ability to heal itself. Scratches or damage to the coating triggers the formation of a protective zinc layer, halting corrosion in its tracks and extending the material's lifespan.

3. Longer Lifespan:

Thanks to its superior resistance, Magnelis® coated steel can endure up to three times longer than standard galvanised steel when exposed to harsh environments.

4. Reduced Maintenance:

The self-healing and enhanced corrosion resistance qualities translate into substantial long-term cost savings. Less maintenance, fewer repairs, and recoating requirements.

5. Environmentally Friendly:

Magnelis® uses less Zinc than traditional galvanised steel, longer lasting, less maintenance and is 100% recyclable.

6. Technical Approvals:

UK: Steel Construction Institute (SCI) concluded that the coating was appropriate for use when specified in construction.

Liner Kits

The liner kits can adapt the steel tanks to store more than just water. We can manufacture flexible tank liners from rubber and plastic based materials.

Rubber Liners: Butyl or EPDM

Rubber liners are predominately used for tank liners due to their flexibility/ elasticity making them easy to install. Butyl rubber has a higher UV resistance, longevity and temperature range than EPDM. EPDM, on the other hand, is a more cost-effective option. (We offer a 15-year warranty on all Butyl tank liners, 10-years for EPDM.)



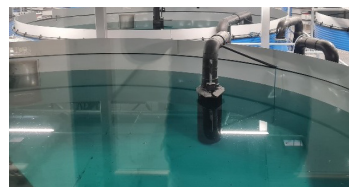
Rubber Liner



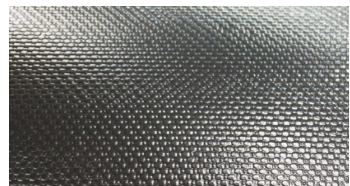
Landflex™ AS



Landflex™ G3000



Landflex™ HDPE



Landflex™ ES



Landflex™ PE DWI



Landflex™ PP DWI

Flexible Plastic Liners

We offer two options for flexible plastic liners, Landflex™ AS or Landflex™ ES. Landflex™ AS is a low-cost PVC based material with good chemical resistance. Landflex™ ES is a highly chemical resistant material designed to contain hydrocarbons and petrochemicals.

Rigid DWI - PE & PP Liners

We offer 2 options for DWI (Reg 31) clean drinking water applications.

Rigid HDPE Liners

HDPE rigid liners, primarily used in aquaculture, are perfect for tanks that require regular cleaning.

What's Included

Our liner kits include:

- ✓ Impermeable Liner
- ✓ Securing capping and clips.
- ✓ Tensioning wire

Optional: Landflex™ G3000 protective fleece. (recommended) as base layer.

Liner Kits

Cleanwater linings	Dirty water linings	Lining solutions						
Sector /application		Landflex EP	Landflex BR	Landflex ES	Landflex PE-DWI	Landflex PP-DWI - 1.2mm	Landflex PP-DWI - 1.5mm	Landflex FT (4mm)
Water tanks non potable		✓	✓	✓	✓	✓	✓	✓
Water tanks potable (DWI) (high abrasion)		✗	✗	✗	✓	✓	✓	✗
Water tanks (Jet wash cleaning)		✗	✗	✓	✓	✗	✓	✓
Water tanks (high abrasion)		✗	✗	✗	✓	✗	✗	✓
Stormwater tanks (no Petrochem's)		✓	✓	✓	✓	✓	✓	✓
Stormwater tanks (Petrochem's)		✗	✗	✓	✗	✓	✓	✓
Lagoons and ponds non potable		✓	✓	✓	✓	✗	✗	✗
Reservoir roofs (DWI)		✗	✗	✗	✓	✓	✓	✗
Baffle curtains (DWI)		✗	✗	✗	✓	✓	✓	✗
Surge vessel bladders (DWI and WRAS)		✗	✗	✗	✗	✓	✗	✗
Wastewater treatment tanks		✓	✓	✓	✗	✗	✗	✓
Slurry tanks		✓	✓	✓	✓	✗	✗	✓
Slurry lagoons		✓	✓	✓	✓	✗	✗	✗

For further information, regarding chemical resistance and specifications please contact our engineering department.

Roof Kits



G600 Steel Roof

The G600 Steel roof covers are available for tank sizes up to 14.63m (48ft) and are designed to withstand UK wind and snow loadings. Available at a 10° or 30° pitch. Supplied with central support and an access hatch.



Anti-Algae Cover

Water permeable lightweight polypropylene mesh for restricting daylight/ Algae growth within tanks.

Supplied with a centre pole, tensioning ropes and hood for inlet.



Aqua-float

A lightweight cover incorporating air cells into the material that deliver in-built buoyancy. The white topside reflects UV rays, preventing 98% of evaporation as well as prohibiting algae growth.



Aqua-Shield

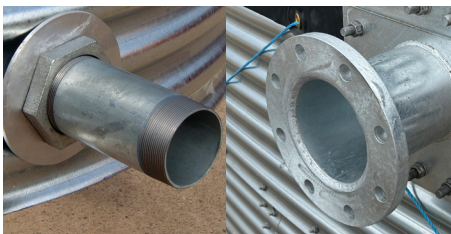
A fully encapsulated lightweight water and wastewater impermeable floating cover made from either our Landflex™ AS or ES material. Prevents contents from being diluted with rainwater whilst rising with the level of water, and provides an odour control solution.

Accessories



Reinforcing Ring

Adds strength and rigidity to the tank and acts as extra tether point. Strongly recommended for open top tanks and highly exposed areas.



Inlets/ Outlets

Ranging from 2" to 12" we can provide connections to Camlock, BSP, Bauer and more. Available in a variety of materials including Galvanised Steel and PVC.



Valves

Available in all outlet sizes and a variety of materials.

- Gate Valves
- Ball Valves
- Butterfly Valves



External Ladders

Available with safety hoops for any tank over 3 rings (2.28m) high. Option for rest and maintenance platforms with steel roofs.



Rainwater Harvesting Kits

2 stage filters to collect water from roof areas up to 1200m² and prevent debris entering the tank. UV filters also available.



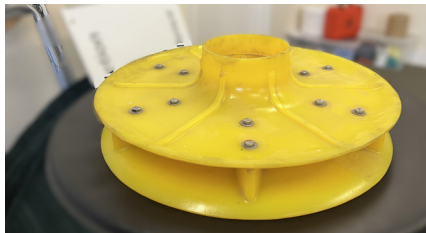
Level Indicators

Available as either sight glass kits as shown in the photo to the left or a float and weight system.



Pipe Enclosures

Galvanised Steel pipe enclosures to protect inlet pipes from damage. Recommended if using MDPE pipework or similar.



Vortex Inhibitors

Prevent air entrainment and its resulting choking effect on the flow rate, safeguarding pump equipment.



Copper Float, Ball Valve & Bracket Set

Prevent overfilling the tank by attaching a pressure ball valve with a copper float to the inlet. Sizes range from 2" to 12".

Installation

A full turnkey solution can be offered whereby we attend site and install the supplied materials using our directly employed site staff, plant and equipment.

Installing water tanks can pose a danger to workers and others working in and around the site. We only send fully qualified technicians to undertake this work to ensure that the project is delivered safely and to the highest quality.

Our staff are CITB registered. The company complies in full to Construction and Design Management Regulations (CDM).

We offer free site surveys in which we will measure the proposed area of installation, check the tank base is suitably level and discuss design options. Site surveys also allow us to plan our installations and produce a Risk Assessment and Method Statement (RAMS) for each project. Meaning we can select an appropriate method to safely install each tank in accordance with site regulations.

For example, as per the Work at Height Regulations 2005 (WAHR), we avoid working at height where possible and have developed our own hydraulic jacking system in which we can erect our steel tanks from ground level. In instances where we must work from height, each site team includes staff which are PASMA trained for assembling scaffold towers/ mobile platforms and IPAF trained operating scissor lift platforms and cherry pickers.

All operational staff are CSCS card holders, confined space trained and certified TWI geomembrane welders.



Industries

Butek Tanks offer bespoke water storage solutions to the following industries. Tailoring to the unique requirements of each industry to provide efficient, high-quality systems.

Helping improve water management, sustainability and emergency preparedness as well as reducing the strain on traditional water supplies.



Stormwater / Spill Management

We work closely with water authorities across the UK, integrating auxiliary influent water tanks at overspill stations to offer additional storage capacity during excessive storm periods.



Emergency Water Supply

Our tanks can be tailored to local and national standards to offer additional water to emergency services in case of a fire. Supplied with quick release couplings and vortex inhibitors.



Industrial

Due to our extensive range of lining options, we can offer tanks for a wide range of industrial applications. From storing water used for dust suppression and plant requirements to chemicals such as acids, alkalis, hydrocarbons and petrochemicals.



Aquaculture

From small individual units to large commercial fish breeding tanks, we provide onshore Fish farming tanks. Manufactured to the highest standards and the ability to integrate with any RAS system, our tanks are used across the industry to farm Salmon, Tuna, Trout, Cod, Halibut and more.

Butek Tanks a Specialist Division of Butyl Products Ltd

(+44) 01277 653 281 enquiries@butektanks.co.uk www.butektanks.com

Industries



Agriculture

Our extensive range of tanks is specifically designed for agricultural applications, making them ideal for storing essential resources such as drinking water for livestock, irrigation water, slurry, and fertilizer. We understand that every farm has unique requirements, which is why we create bespoke tanks tailored to fit your available space perfectly and comply with the Farming Equipment and Technology Fund (FETF).



Horticulture

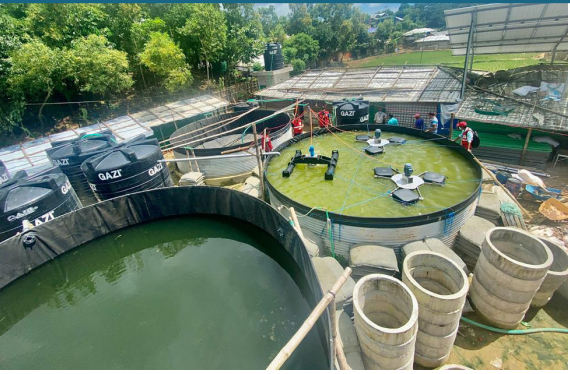
Helping nurseries, landscapers and many other horticulturists to integrate efficient water storage as part of an irrigation system. Whether it be water collected from rivers, reservoirs, mains or boreholes as well as rainwater harvesting systems.



Sports & Leisure

Butek Tanks have supplied and installed irrigation tanks at many UK golf courses and sports facilities including premier ship football clubs. We understand irrigation water is key to the success of any sports turf and work closely with irrigation specialists to provide a system bespoke to meet any unique requirements.

Modular Wastewater System (MWS)



The MWS is a bespoke modular wastewater system designed to be deployed in emergency or planned maintenance projects where an existing WWT needs to be taken offline and be repaired.

The waste stream is treated with efficient, low-energy processes that will remove all dangerous pathogens.

The effluent water can be discharged directly into an existing drainage system.

Data based on an 800-person facility:

Daily Input of Waste
80,000- 120,000 litres

System Volume
300,000 litres (4 x O2 T75 Tanks)

Operational in 11 Days
Each MWS can be installed in around 7-20 days (depending on facility size) using supplied technical support and local labour.

Flexible Deployment
System layout and tank size can be tailored to suit the location and condition.

Pathogen Reduction
99.99%

Site based lab facilities for testing faecal sludge, ammonia and nitrogen (training provided for local staff)



Associated products



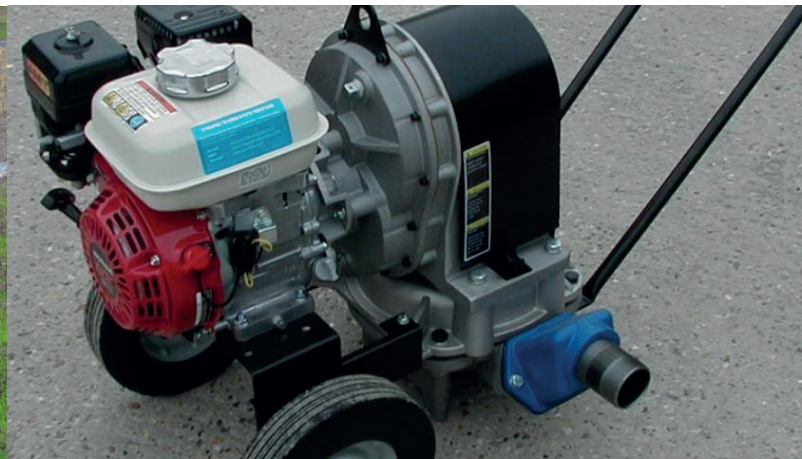
Reservoir Roof Linings

We work closely with Water Companies and provide reservoir roof waterproofing solutions to both existing and new build constructions. The waterproof integrity of a reservoir is vital in protecting the treated water resource, and contamination of a reservoir can have serious implications.

Baffle Curtains

Baffle curtains increase reservoir retention time, assist flow segregation, enhance sediment drop-out, and eliminate surface water skimming and stagnation.

Baffle curtains in drinking water applications must be manufactured from membranes that are approved by the Drinking Water Inspectorate (DWI). We offer DWI approved geomembranes for such applications.



Sewage Treatment Linings

We design, manufacture and install sewage treatment linings to provide liquid containment for wastewater.

Our lining solutions work by allowing bacteria, fungi and micro-organisms to breakdown, digest and clean the wastewater to the point where it can be safely discharged.

Surface Water and Sewage Pumps

We carry a range of stage 5 compliant diesel engine driven pumps in stock. Our pumps are manufactured by our subsidiary company in the UK.

It is also possible for us to supply a full range of petrol, diesel and electric engine driven pumps from 1.5" to 8" with the ability to handle fresh, potable(drinking) water, saltwater, and other liquids as well as solids, sewage, and sludge.

Butek Tanks a Specialist Division of Butyl Products Ltd

(+44) 01277 653 281 enquiries@butektanks.co.uk www.butektanks.com

Accreditations

Accreditations

The company has Safe Contractor status, are full members of the British Safety Council, ConstructionLine Gold, Alcumus, Achilles, SMAS and the British Geomembrane Association. We have Public and Product Liability Insurance up to £10m.



Our divisions

BUTEK Tanks

A specialist division of Butyl Products Ltd

BUTEK Landline

Containment Solutions

BUTEK Ponds

Bespoke Pond Liner Manufacturer



BUTEK Tanks

A specialist division of Butyl Products Ltd

Butek Tanks a specialist division of Butyl Products Ltd

Address:

Lingfield House,
11 Radford Crescent,
Billericay, Essex,
CM12 0DW

Telephone:

01277 653 281

Email:

enquiries@butektanks.co.uk

Website:

www.butektanks.com