



POWERED BY NATURE. GREEN BY DESIGN.

THE SMARTER WELFARE CHOICE



BOSS CABINS



DEEP GREEN 2030
FULL SPECTRUM SUSTAINABILITY

A RELENTLESS OBSESSION TO DO BETTER IS WHAT DIFFERENTIATES US FROM OTHER MANUFACTURERS.

WHEN YOU CHOOSE BOSS CABINS AS YOUR
WELFARE PARTNER, YOU'RE CHOOSING A
COMPANY THAT GOES WAY FURTHER THAN
OTHERS

**PURPOSEFUL
INNOVATION**



**CUSTOMER
FOCUS**



**RETHINKING
MARKETS**



**PIONEERING
PRODUCTS**

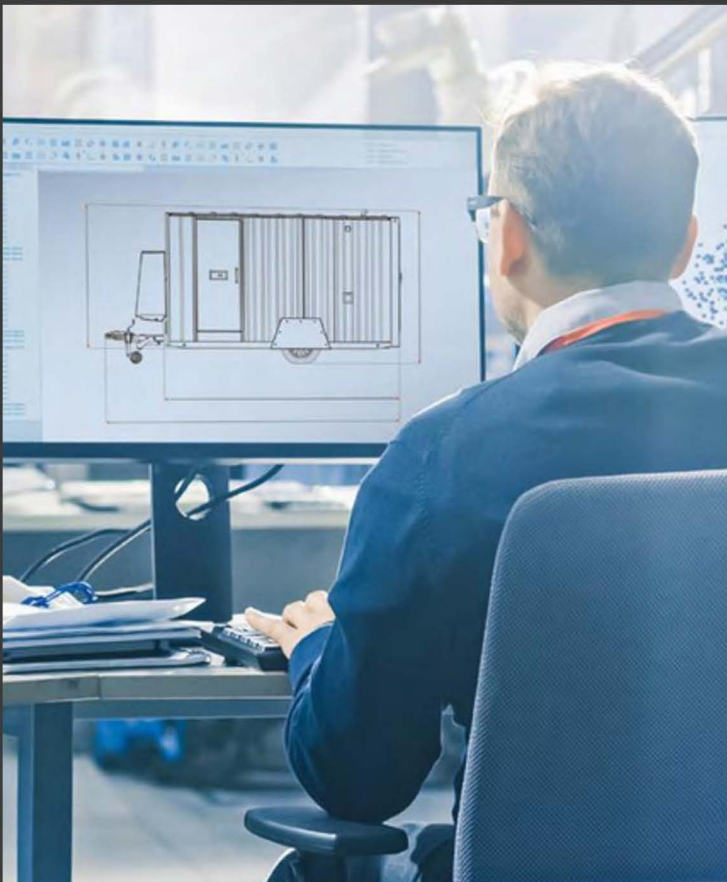


In 2010, Boss Cabins set out to disrupt a stale welfare market lacking innovation.

We grew quickly, and introduced many new ideas to the market, which customers loved, and in turn woke up the welfare industry to a host of new possibilities.

We never stop listening to our customers' needs and challenges. That's why we have constantly reinvented and reviewed our product portfolio to meet the changing demands of the welfare industry.

Whatever your business, we have an industry-leading product to match your needs.



THE MISSION

Our mission is to put customers' needs to the forefront at all times and develop exciting new products that constantly improve the users' site welfare experience while lowering operational costs and environmental impact.

THE PRESENT

We are now the UK's market-leading welfare manufacturer, creating and building products that have won a loyal customer base due to our reputation for quality, innovation, durability, eco-friendly features and attentive after-sales service.

THE FUTURE

We are revolutionising the site welfare market with our sustainable Deep Green 2030 cabins, including GenFree™, the world's first generator-free towable and static welfare cabin range. We'll never stop innovating for a better future for our customers and for the planet.





OUR MISSION WELFARE THAT CARES

If carbon savings and low environmental impact are top of your company's welfare checklist, we can help.

Our flagship solar-powered GenFree, Deep Green Ultra and Deep Green welfare ranges provide a proven effective way for worksites to lower their fuel use, minimise CO2 emissions and cut servicing requirements. Their patented technology and innovations help welfare owners and users achieve Net Zero, ESG and other sustainability targets by lowering the carbon footprint associated with traditional diesel-powered welfare operation.



OUR RANGES

Whatever your business, we have an industry-leading product to match your needs.

Whether you choose our GenFree, Deep Green Ultra, Deep Green or standard cabin ranges, one thing remains the same – product excellence at every level.

We've never stopped listening to our customers' needs and challenges. That's why we have constantly reinvented and reviewed our product portfolio to meet the changing demands of the welfare industry.

GREENER THINKING

For customers who want or need to significantly lower their environmental impact on site, our GenFree, Deep Green Ultra and Deep Green ranges are perfect. Sharing most of the same sustainable features between them, they complement each other to offer a greener welfare solution for any type of environment.

GenFree is a truly ground-breaking product which offers the ability to do away with the welfare cabin diesel generator on site completely. GenFree will perform flawlessly in most conditions, but ideally should be used in situations where units can be placed in direct light with little or no obstructions where it can soak up PV via its extensive arrays of solar panels.

We know this isn't always possible. So if you need to put cabins in locations where they will be parked in the shade, perhaps under heavy trees or beside tall buildings, you might prefer a Deep Green Ultra (roof and vertical solar) or Deep Green (roof solar only) cabin with a 2.3kVA Stage V HVO-compatible back up generator available to top the battery up if the cabin cannot generate enough energy from solar alone.

THE BOSS STANDARD

Our Boss standard range has led the way in welfare since 2010, gaining a reputation along the way for strength, durability, quality build, comfort and a multitude of useful features. Solid products, with innovations and upgrades to help you build the hire product that suits you.

CHOOSE YOUR SPEC



MOBILE & STATIC WELFARE,
PORTABLE TOILETS, DRYING UNITS

GENERATOR FREE

Our Genfree™ units take solar performance to such a high level that we've removed the generator entirely. All electrics run year-round from solar alone and the only fuel consumed is in the heater in winter using just 0.25l per hour. Ultra-low fuel costs benefit the user and ultra-low emissions benefit the planet. Plus units are 100% silent running and come with full advanced telemetry features.



MOBILE & STATIC WELFARE,
PORTABLE TOILETS, DRYING UNITS

DEEP GREEN ULTRA

Deep Green Ultra units have almost the same solar capacity as GenFree (less the extendable tray) plus are fitted with a small 2.3kVa back up generator to charge the battery if required. This makes them suitable for areas where maximum eco performance is required but positioning in full open air cannot be guaranteed, such as under trees or in heavily built up areas.



MOBILE & STATIC WELFARE,
PORTABLE TOILETS, CHARGING CABINS

DEEP GREEN

With solar panels on the roof, our original Deep Green solar hybrid unit boasts huge savings on traditional diesel cabins, cutting fuel use and emissions by an average 80%. Like all our solar ranges, Deep Green takes a 360° approach to sustainability, packed with eco-friendly innovations. Built in long-lasting stainless steel, cabins have a patented rain harvesting and water recycling system that cuts toilet servicing by 2/3.



MOBILE & STATIC WELFARE, TOOL
STORES

BOSS STANDARD

Our standard welfare cabins have an unparalleled reputation in the industry, winning the trust and admiration of customers for over 13 years. Create the perfect cabin for your business, choosing from a range of eco electrical specs and many other options, including our exclusive patented Infinity generator with 2000 hour service interval.



**PEAK PERFORMANCE
WITHOUT THE ENVIRONMENTAL IMPACT**

GENFREE



TOTAL ANNUAL SAVINGS

£12,806

Operational costs:
Breakdown as follows

24ft GenFree with
twin toilets and
drying room

£8,170

Direct fuel costs
avoided

3800L

Total litres fuel saved

£2,296

Generator servicing
costs avoided

12,035kg

Total CO2 emissions avoided

£2,340

Toilet servicing
costs avoided

*Compared to standard comparable 'eco' 24ft unit with Canteen, Office and Drying Room. CO2 emissions calculation: 1 litre of fuel = 3.16 kg of CO2 (inc. Scope 3). HVO biofuel - £2.15 litre.

NO GENERATOR? NO PROBLEM!

Imagine a welfare cabin with
NO generator fuel cost
NO generator emissions
NO generator noise
NO generator servicing costs
NO generator breakdowns
or repairs... ever.

After seeing how little the generators were running in our solar-powered Deep Green cabins, we decided to take our solar mission one step further and designed GenFree, a welfare range eliminates the generator completely.

With a patented and rigorously tested design incorporating extendable solar arrays and vertical panels, enough free renewable solar energy is harvested to power ALL electrical operations effectively 24 hours a day, 7 days a week, 12 months a year, meaning no generator is required even for backup.

Our flagship GenFree range provides a proven effective way for worksites to lower fuel use, minimise CO2 emissions and cut servicing requirements. Patented technology and innovations help welfare owners and users achieve Net Zero, ESG and other sustainability targets by lowering the carbon footprint associated with traditional diesel-powered welfare operation.



ECO PERFORMANCE LIKE NO OTHER



GENERATOR FREE

No onboard generator fitted.



100% SILENT

100% silent operation.
No generator noise.



NO GENERATOR SERVICING

No generator servicing ever.



NO GENERATOR PROBLEMS

No generator-related outages
and breakdowns ever.



NO GENERATOR EMISSIONS

No generator-related CO2 or
other harmful emissions ever.



NO FUEL COST

No generator fuel costs ever.
Ultra low consumption heater
uses just 0.25l fuel per hour.



ZERO EMISSIONS

Summer months with no
heater = ZERO EMISSIONS



LOW WINTER EMISSIONS

Winter months with heater =
ULTRA LOW EMISSIONS

HIGH PERFORMANCE PLANET FRIENDLY

Our GenFree, Deep Green Ultra and Deep Green units share a host of features designed to lower your welfare's environmental impact.

SOLAR POWERED

In GenFree cabins, 100% of electrical power requirements are supplied by solar 100% of the time. Deep Green Ultra and Deep Green cabins also incorporate a small 2.3kVA back-up generator in case the battery needs charging.

RAIN HARVESTING

A patented rain harvesting and grey water recycling system cuts toilet service visits by average 66%.

NEAR ZERO EMISSIONS

CO₂, and other harmful emissions including NO_x, SO_x, Benzene and Particulate matter significantly reduced with either zero or very low generator run times.

REMOTE MONITORING

SOLARTrack™ system remotely reports energy use & production, tank levels & faults.

WATER SAVING

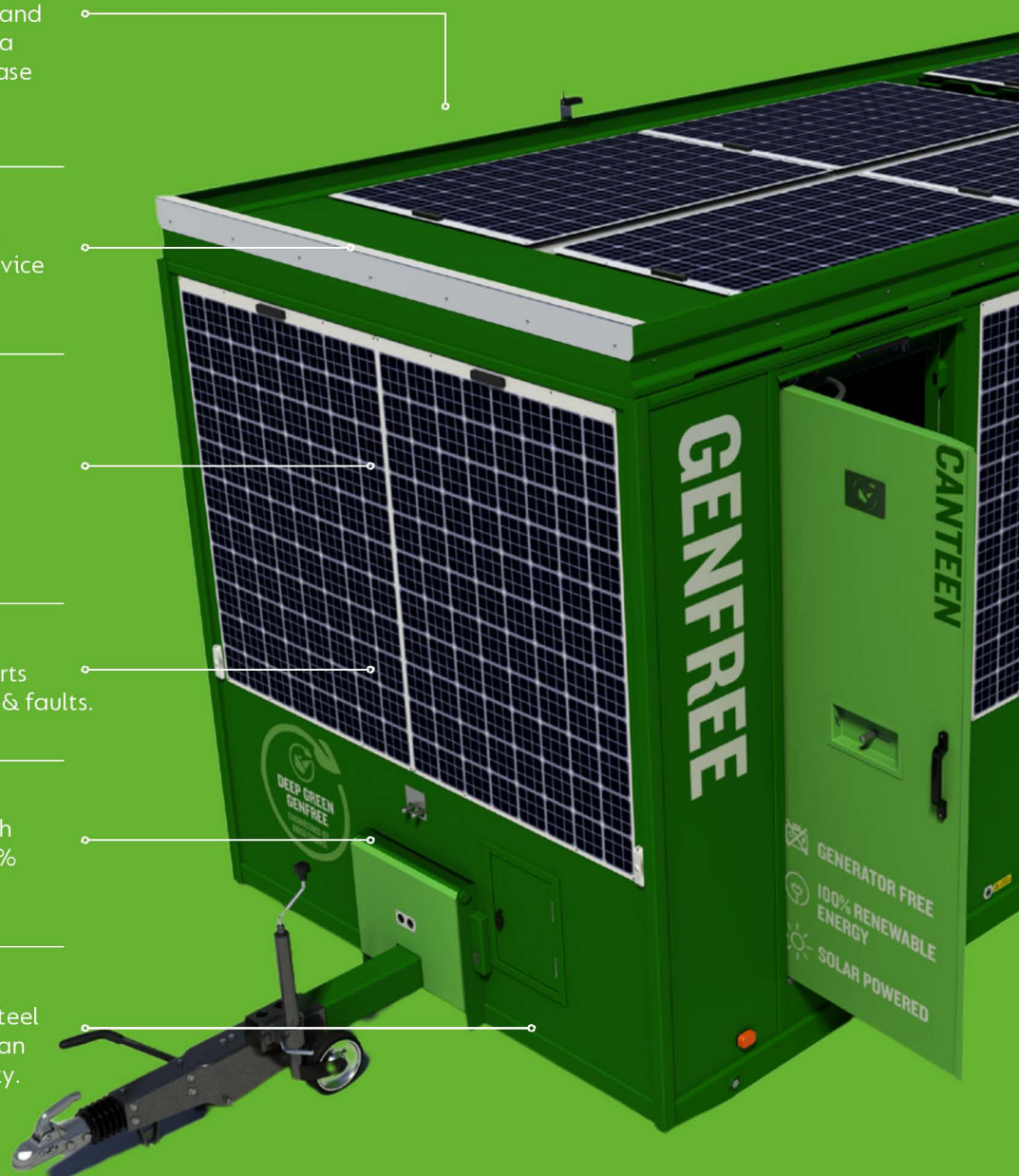
Urinals are water-free and micro flush toilets only use 0.5 litre per flush, 90% less than standard.

SUSTAINABLE BUILD

Built as standard in 100% stainless steel build with a greatly extended life span and a 25 year anti-corrosion warranty.

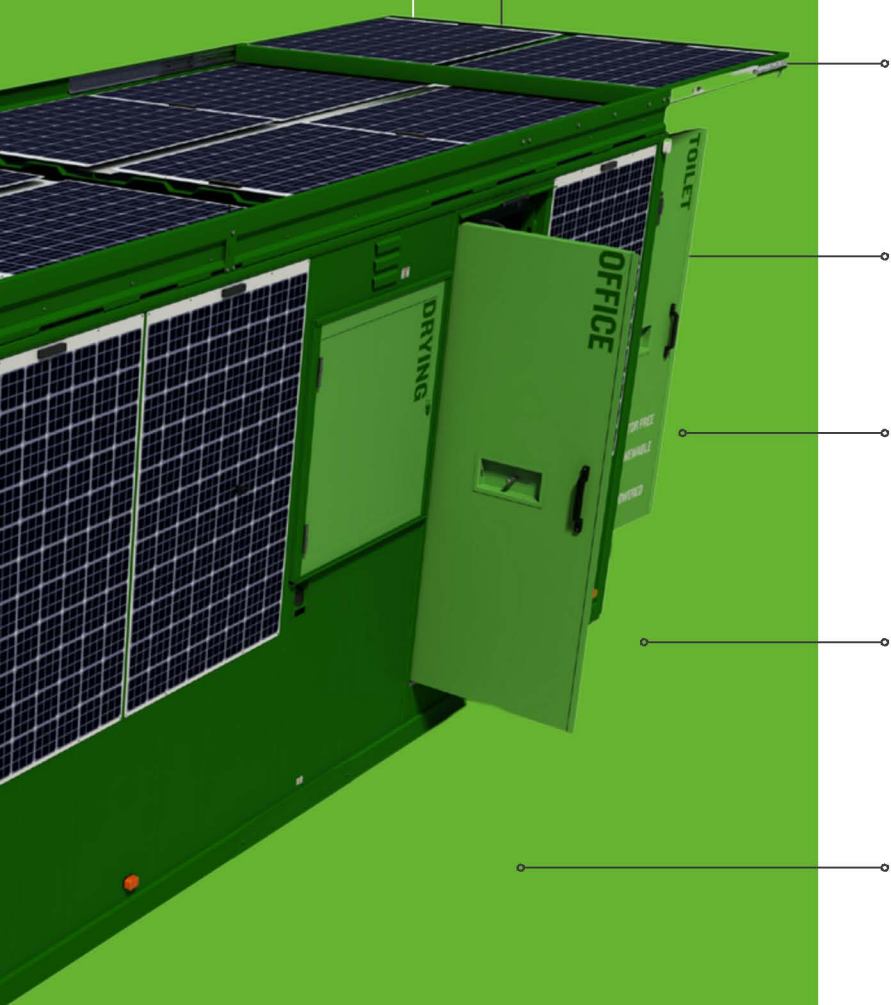
PEACEFUL ENVIRONMENT

GenFree cabins are 100% silent operation and Deep Green cabins have a minimal generator run time so very little noise.



POWER GENERATED

One solar panel generates up to 315 Watts or 450 on a static cabin.



SIMPLE TO OPERATE

Designed for simplicity of use, just enter the cabin and use appliances as you would at home. No need to switch electrics or generator on. Electrics and heating are PIR-controlled so turn off automatically too.

ENERGY SAVING

Highly efficient electrical system designed for the lowest levels of energy consumption.

RECYCLABLE

Use of recyclable materials to ensure minimal end-of-life environmental impact. 97.2% recyclable.

FINANCIAL SAVINGS

Huge cut in fuel costs as well as savings on toilet and generator servicing.

HVO BIOFUEL COMPATIBLE

Generators and heaters can be fuelled with HVO biofuel, a natural renewable energy source which cuts net CO2 emissions by 90%. Can be used interchangeably with diesel

DEDICATED SUPPORT

Comprehensive aftercare service – a fleet of nationwide engineers, training plus phone and online support.

REDUCED SERVICING

No generator servicing at all in GenFree units. Vastly reduced servicing in Deep Green units due to the low generator runtime.

OUR BOSS SOLAR
RANGE IS
AVAILABLE AS:



GENFREE



DEEP GREEN
ULTRA



DEEP GREEN
FULL SPECTRUM SUSTAINABILITY

THE GREENER SOLUTION TO WELFARE

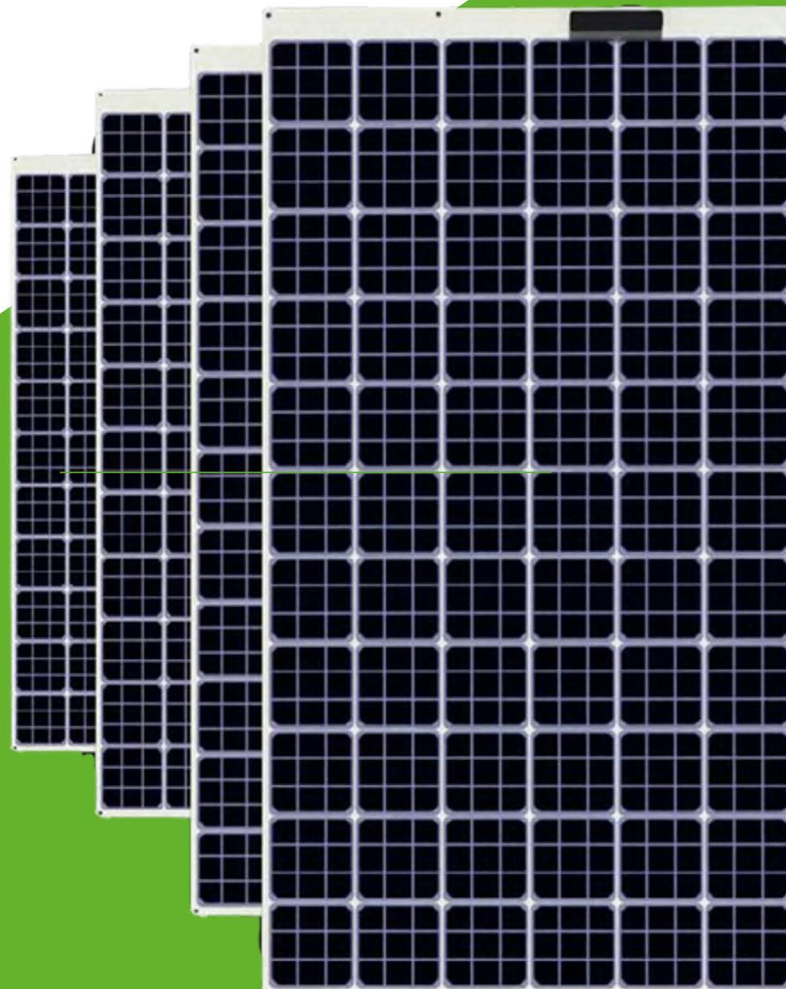
After introducing a number of eco-friendly innovations to its cabins over the years, in 2020 Boss Cabins launched the first of its Boss Solar ranges - Deep Green, a solar-powered welfare unit in which the entire focus was to be as sustainable as possible in every aspect and raise the bar for green welfare throughout the industry.

After seeing the success of our Deep Green range we developed our revolutionary GenFree and then Deep Green Ultra ranges. All our Boss Solar products include a host of sustainable features and technology which:

- ✓ Maximise the use of free renewable solar energy
- ✓ Minimise the costly and environmentally harmful burning of diesel
- ✓ Minimise CO2 emissions in operation and over the full life cycle of the cabin
- ✓ Minimise the need to attend the cabin for any reason thereby cutting down on the time, travel and fuel costs
- ✓ Minimise the need to attend the cabin for any reason thereby cutting down on the time, travel and fuel costs
- ✓ Maximise the lifespan of our products and their end of life recyclability.
- ✓ Provide financial savings for end users and welfare owners

THE FUTURE OF WELFARE

With over 1000 units now in the field and counting, Boss Cabins is proud that by replacing traditional diesel cabins, the GenFree and Deep Green fleets are significantly reducing fuel use, carbon emissions and operational costs across the welfare industry.



GENFREE & DEEP GREEN

FEATURES AND BENEFITS

SUSTAINABLE

- Highly efficient 315W solar panels cover the roof, walls plus extendable solar tray on GenFree
- Energy stored in large capacity long life 5.12 kWh lithium-ion batteries
- Ultra-low consumption diesel heater uses only 0.25 litres of fuel p/hour with minimal emissions. Use HVO in heater to lower CO2 by further 90%.
- SOLARTrack™ VRM system gives remote access 24/7 to data on energy consumption, production, battery charge status, tank levels and location.
- Our team of experts can help monitor data and help users set parameters remotely to optimise cabin performance at all times.
- An exclusive online system makes reporting fuel, CO2 and servicing savings for ESG, Net Zero and other sustainability reports easy.
- Full stainless steel build increases cabin lifespan x3.6 compared to standard cabins. 25-year anti-corrosion warranty. Highest market resale value.
- Zero or minimal generator servicing or repairs - eliminates most engineer site visits so fewer vehicle emissions and fuel use.
- UV water sterilisation system – chemical-free and low-energy operation.
- Patented WMPRO waste system harvests rain water then recycles grey water to flush toilets cutting servicing by approx. 66%.
- Microflush toilets use as little as 0.5l per flush, water saving of 91%. Waterless urinals.
- Freshwater toilets cut chemical usage
- Low-power hands-free electric hand dryers – saves paper waste.
- Suitable for ULEZ and Clean Air zones and environmentally sensitive areas where air or noise pollution must be avoided.

EASE OF USE

- Automatic electrical system start/stop via PIR-sensor. No need to turn off cabin electrics or heaters when leaving the cabin.
- On-board control panel gives early warning of any issues and advice on how to rectify them, avoiding needless service calls.
- Cabin deploys in under a minute by one person with electric hydraulics. 4-ram system means no displacement in cabin during deployment.
- Surface-mounted LED road lights for ease of use. Just slide in the number plate and go.
- PIR-sensor 24V LED lighting interior and exterior.
- Dusk-to-dawn sensor on exterior lights so will not come on during daylight hours unnecessarily.
- Instant hot water in the canteen and toilets
- Foot-operated hands-free flush.
- Standalone solution – no hook-up required.

SECURITY & SAFETY

- To combat theft, hydraulic activation switch is located inside the cabin so hydraulics cannot be 'hot-wired' from outside.
- Full steel anti-vandal build with 3-bolt locking doors and security shutters.
- Non-glass solar panels constructed from robust materials to withstand knocks on site.
- 'Frost-free' system installed to ensure pipes and taps do not freeze in winter.
- Batteries are fitted in an insulated enclosure with a heater to ensure year round operation.
- Low-level lifting points avoid 'Working at Height' issues.
- Removable lifting eyes combat the risk of theft.
- Optimally balanced for easy towing.
- All electrics are certified 100% compliant with UK legislation BS7671 18th Edition.



Long-lasting safe lithium ion batteries



Remote monitoring of energy



Ultra efficient electrical system



Zero emissions in summer with no heater



Meets all HSE and CDM site welfare standards



Can be powered by external electricity supply



Ultra low-fuel HVO heating system



Rain and grey water recycling



Anti-vandal doors with 3-bolt locking system



VCA Type Approval under Directive 2007/46/EC



25% stronger and impact resistant build quality



Instant hot hand wash water in canteen and toilets



Stainless steel build, x3.6 longer lifespan



Silent or minimal noise operation

SOLARTrack™

24/7 REMOTE MONITORING & REPORTING

Remote access 24/7 to real-time and historical data on your cabin's operational status via WiFi or 3G/4G/5G internet connection using our online VRM system. Energy consumption and production, battery charge status, location, weather, tank levels and much more.

Allows cabin owners to set alarms; change functional parameters; monitor energy production and consumption; track fuel use; view waste/water/fuel tank levels; track and remedy faults. Data is recorded and stored, meaning carbon savings can be reported easily and accurately. An on-board control panel shows key data plus system warnings and solution advice as well as controlling certain functions. Plus it is simple and quick to create reports on your fleet's CO2 and financial savings using our exclusive online software system.

REMOTE ENERGY

Logs energy production from solar panels

Records cabin energy consumption

Monitors battery levels

Real time and historical data

Location and weather information

User friendly graphics

Easily generate fuel, CO2, servicing and cost savings reports for ESG, Net Zero and other targets with bespoke software tools

DIAGNOSTICS

Remote fuel level monitoring and low fuel alarm

Email alerts and an on-board control panel flag up system faults - allowing early detection, diagnosis and resolution avoiding most site visits

Remote generator control inc switch on/off; load management optimised quiet hours and scheduled runs

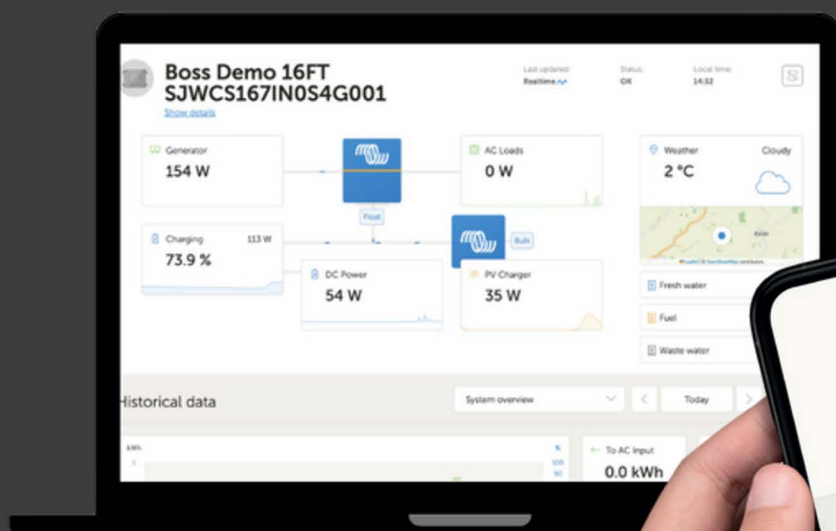
Remote fault reporting and troubleshooting

SERVICE PLANNING

Monitor fuel, waste and water levels remotely

Set alarms with email alerts for waste, water and fuel tank levels

Plan service visits precisely and reduce costs



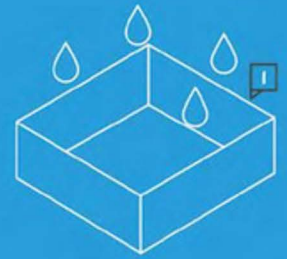
RAIN HARVESTING & GREY WATER RECYCLING

Our GenFree and Deep Green welfare cabins and toilets use an exclusive patented system to reduce significantly the amount of water needed to operate and the amount of toilet waste produced.

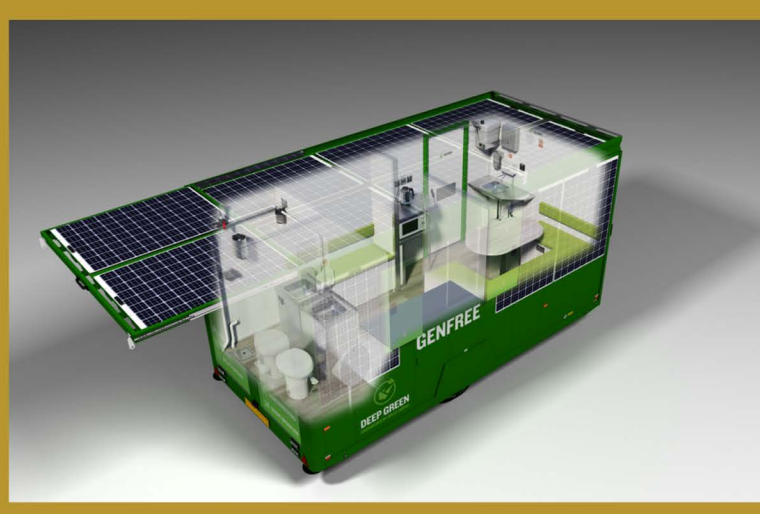
By clever use of rain-water harvesting and grey-water recycling, this system benefits both the environment and the user. With far less wastewater produced and less water needed, the interval between services increases dramatically meaning big savings in fuel, time and cash. Where toilets are traditionally serviced weekly, this interval can easily stretch to 3 or even 4 weeks.

HERE'S HOW IT WORKS:

1. Rainwater is captured then sieved for large debris and stored in a tank.
2. The rainwater is passed through a UV filter to sterilise it before being heated and used for washing hands.
3. Water from the sink is transferred to a grey water tank.
4. Water from the grey water tank is used to flush the toilet.



RECOGNISED FOR OUR GREEN IMPACT



DON'T JUST TAKE OUR WORD FOR IT

Here's what people have to say about us:

"Very impressed with how the cabin performed – it's a great product. The cabin was used heavily 24 hours a day, 7 days a week on the site with no issues at all. Also, the reporting to highlight the cost savings was a real eye opener – it was great to see how much fuel use and emissions we'd avoided over the period."

"We were also really surprised with how simple the welfare units were to operate and how problem-free they were. We are used to having cabins with generators on site and to be honest, that's where all our breakdowns occur – the generator is a real weak point, causing a lot of costly service visits to site to get them fixed. So having a cabin without a generator on site would remove a lot of issues for us."

"The team and I were really pleased with the generator-free cabins and based on what I've seen so far, I'd be very keen to roll them out across all our sites."

BALFOUR BEATTY

"These cabins have proven instrumental in advancing BAM's aspirations to achieve Net Zero status."

BAM SITE SERVICES

"We are pleased to be using a solar powered generator free welfare unit on our scheme for National Highways. Despite winter conditions, this is perfect for our night works as the welfare can be left to charge during the day and also benefits from rain water harvesting."

M J CHURCH for NATIONAL HIGHWAYS

"This really is a mighty breakthrough in the manufacture of site welfare and a massive step towards a future of zero fuel and emission operation!"

LEADING UK HIRE COMPANY

"Really pleased Bowmer + Kirkland has been one of the first companies to trial this exciting new solar unit - supporting us to work towards zero by 40. With electrics powered entirely from solar energy, removing all generator-related emissions and the unit having 100% silent operation, it will create an environmentally friendly, noise free welfare solution for many of our B+K sites nationwide. The unit is performing extremely well and the site team are very pleased with it... Amazing results - even during the dark winter months!"

BOWMER + KIRKLAND

"The results of this trial, carried out during January, at a difficult time of year in terms of light and weather, plus having the excess 24/7 demands on the cabin usage, have wildly exceeded our expectations. We have full confidence in these generator-free welfare products going forward. This really is a massive breakthrough in the world of green welfare"

LEADING UK HIRE COMPANY

"As a tech-first company focused on carbon reduction, the GenFree welfare cabin fits seamlessly into our company's activities and ethos, allowing us to keep the noise to a minimum for the residents, especially at night. The residents, our fire marshals, and Prime Secure are extremely happy with the performance of the cabin and the support we have received."

PRIME SECURE

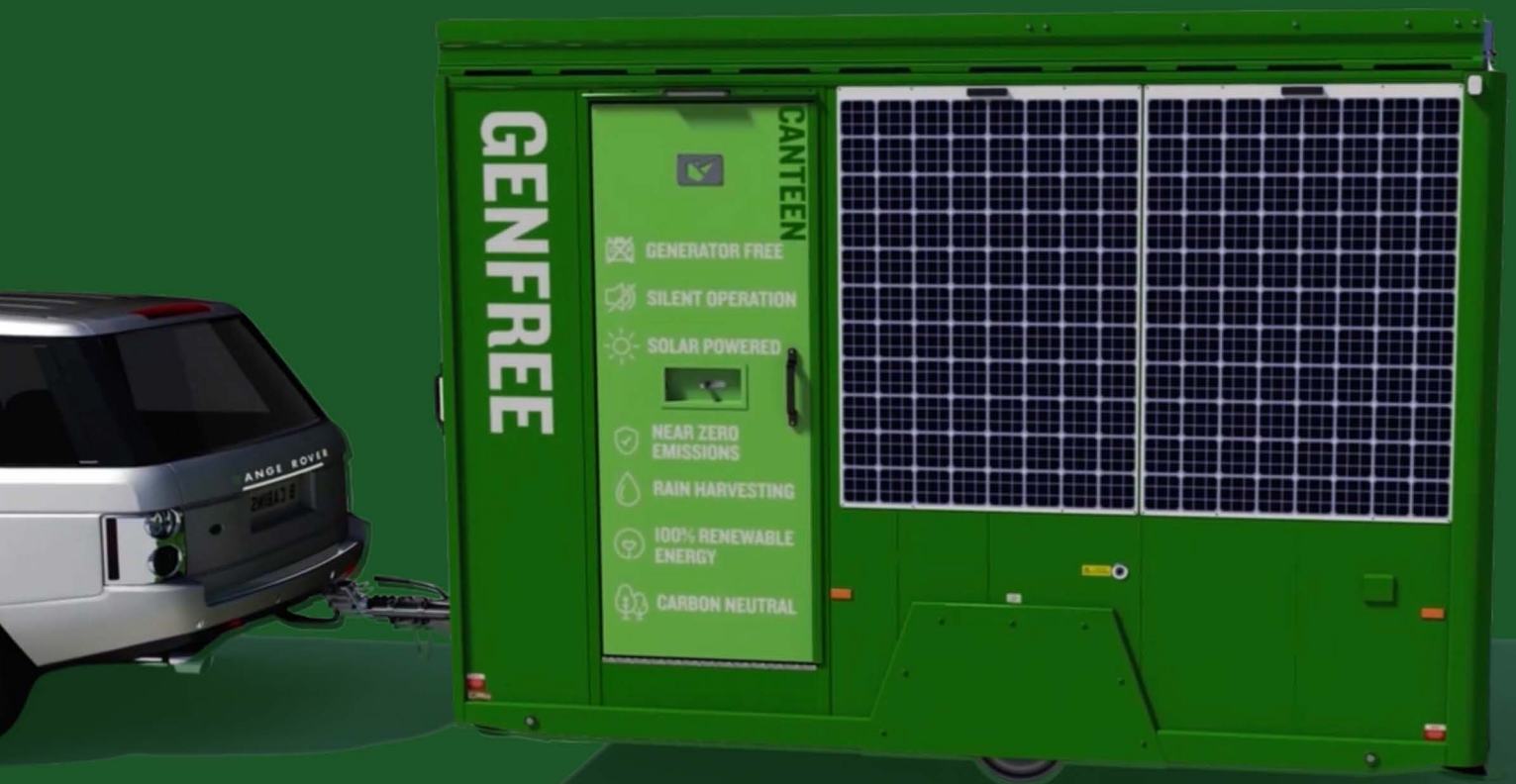
"As with electric cars, our newest Generator Free units have considerably fewer serviceable working parts so nothing that can really fail, reducing the potential for service engineer call out levels and cabin downtime significantly."

LEADING UK HIRE COMPANY

"This product has been a focal piece on our sustainability journey."

THE CLANCY GROUP

MOBILE WELFARE



Our mobile welfare cabins are towable by any commercial vehicle and easily deployed and ready for use in under one minute. Versatile and adaptable to your needs, units come in a variety of multi-function layouts, including canteens, offices, toilets and drying rooms. Available in GenFree, Deep Green Ultra, Deep Green and standard specs, we will help you create the perfect welfare cabin for your company's specific needs.



EASY TO TRANSPORT PACKED WITH FEATURES

If you want maximum flexibility for your fleet, you need a mobile welfare cabin. Our towable welfare units have established themselves as the superior choice in the industry, winning the trust and respect of customers since 2010, making us the market leader in this field.

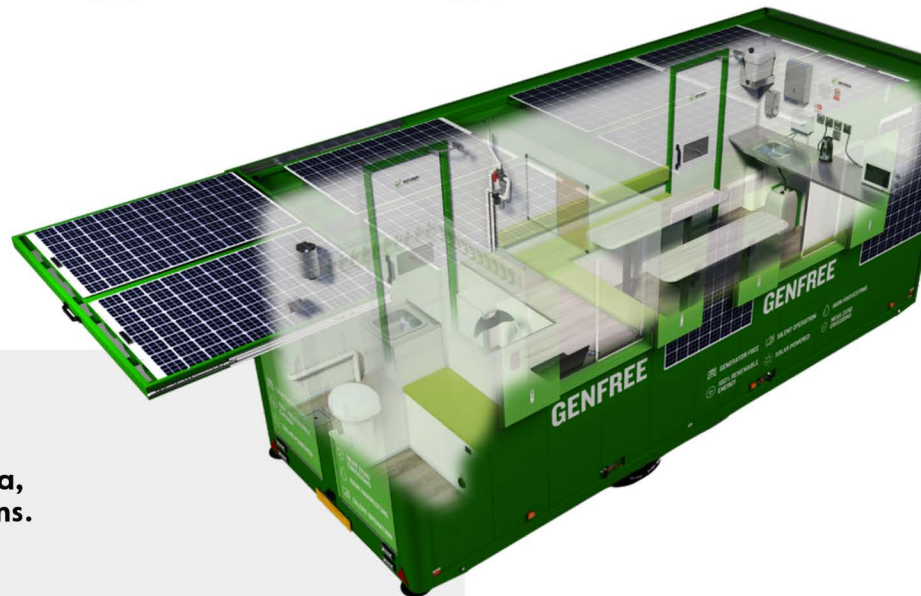
Renowned for their unparalleled strength, comfort, and ingenious features, our cabins have become synonymous with reliability and excellence plus a flexible design with a host of optional features to choose from.



12^{FT}-24^{FT}

7 PEOPLE

21 PEOPLE



- Available in GenFree, Deep Green Ultra, Deep Green and standard specifications.
- Easy to operate - most functions controlled by wall-mounted control screen
- VCA Type Approval under Directive 2007/46/EC
- Meet all HSE and CDM site welfare standards
- To combat theft, hydraulic activation switch is located inside the cabin so hydraulics cannot be 'hot-wired'
- Full steel anti-vandal build with 3-bolt locking doors and security shutters.
- Low-level lifting points avoid 'Working at Height' issues while removable lifting eyes combat the risk of theft.
- Optimally balanced for easy towing.
- All electrics are certified 100% compliant with UK legislation BS7671 18th Edition.
- Cost-effective & easy to transport and rapidly deploy on site in under a minute

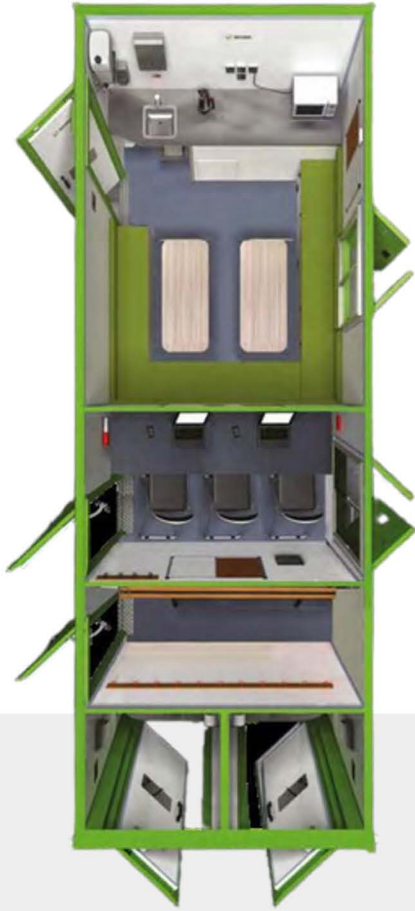


STATIC WELFARE



For longer jobs, static welfare units are perfect. With low-level chain hooks for safe lifting plus forklift pockets, our statics are easy to transport and come in a variety of layouts and different specifications to suit your needs, including standard, Deep Green and GenFree™. All our static units can also be built as hooklift versions.

STATIC BUT NEVER STANDING STILL



We build statics in a variety of sizes and flexible multi-purpose layouts including canteen, office, full drying and changing rooms, plus the option of twin toilets. Or we can help design your own bespoke configuration. Our unique new static design with comfortable padded benches in the canteen allowing for extra seating and more storage. All cabins over 25ft include separate canteen, office and drying/changing room accommodation as standard.

We've also just launched a brand new stackable static, the ultimate in flexible space catering for a large team. If space is at a premium, the stackable solution is ideal, offering all the facilities required in a busy workplace without using so much of your valuable site footprint.

If carbon savings and low environmental impact are top of your company's welfare checklist, then you need our flagship solar-powered sustainable GenFree™ or Deep Green ranges.

12^{FT} - 32^{FT}

7 PEOPLE

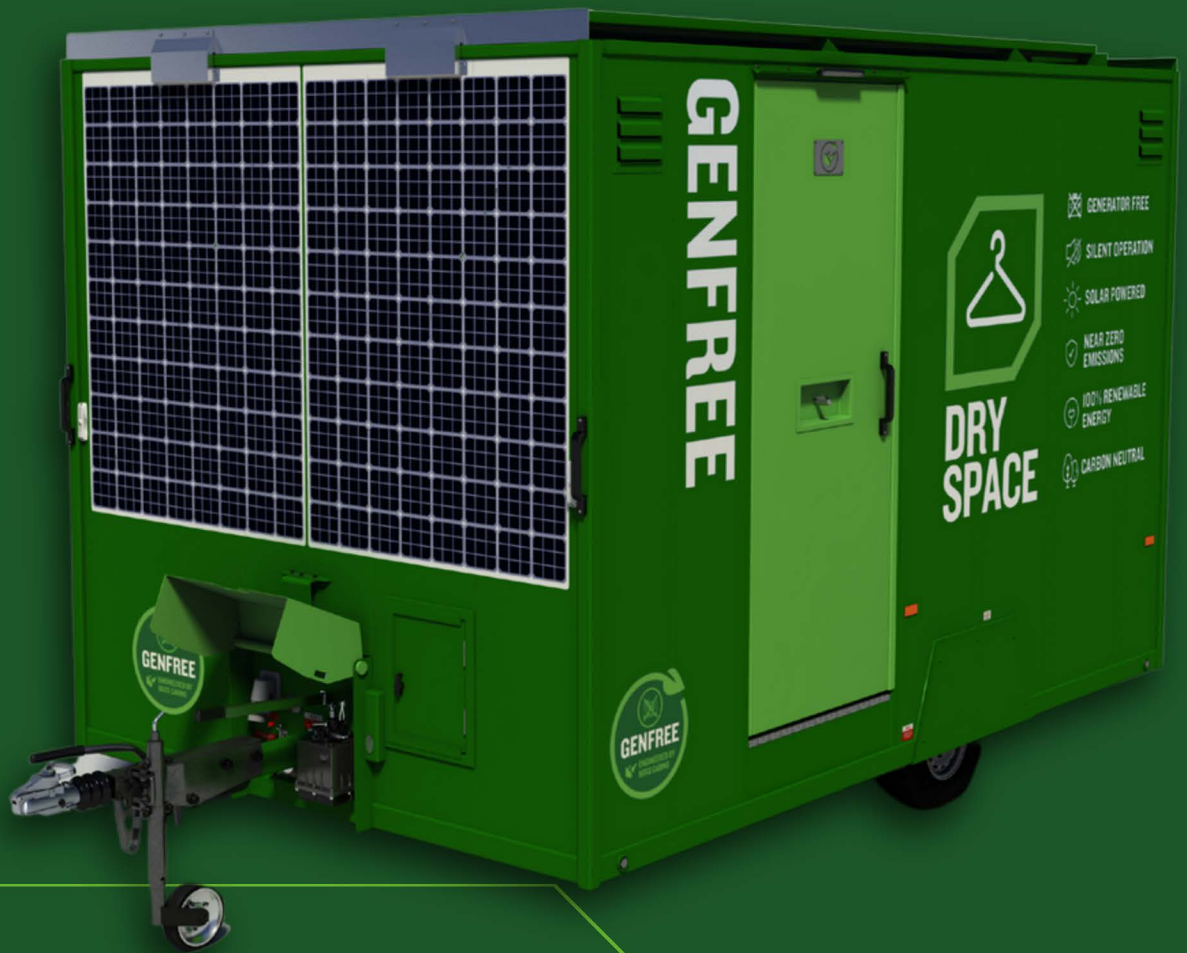
21 PEOPLE



- Available in GenFree, Deep Green Ultra, Deep Green and standard specifications. Also stackable.
- Modern ergonomic designs with comfortable bench seating and split tables with rounded corners for easy access
- Anti-vandal doors with 3-bolt locking system, anti-prise strip and keyholes positioned to prevent lock chiselling
- High-security windows with locking steel shutters and toughened glass panes
- Low-level lifting eyes avoid 'Working at Height' issues
- Chain guides for safe lifting plus stainless steel chain guard to avoid damage from chains/straps
- Create your own bespoke layout



DRYING UNITS



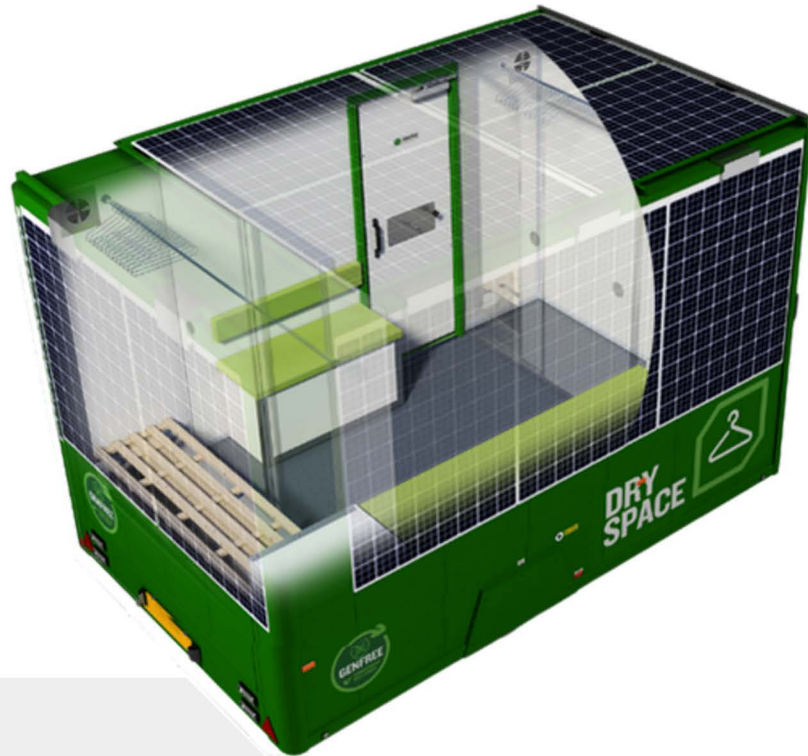
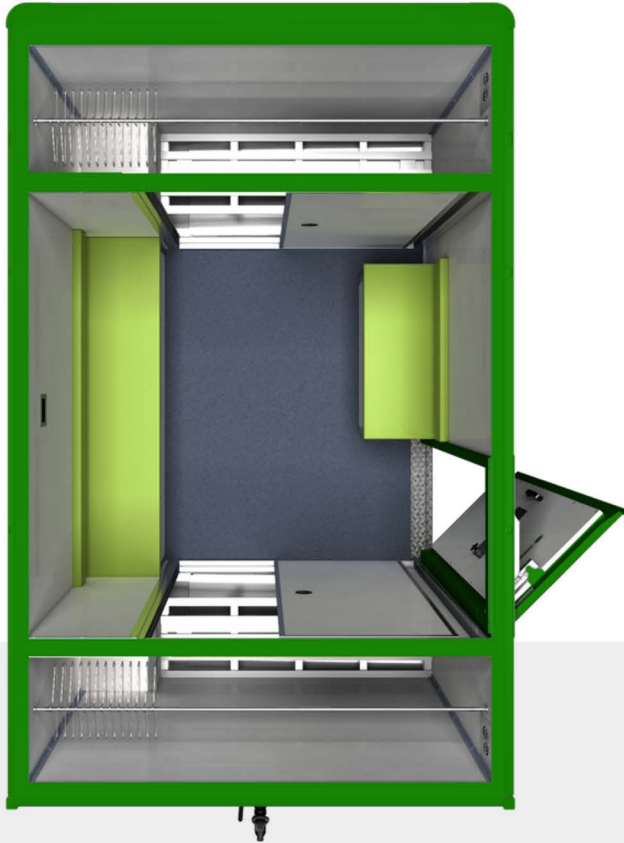
Our drying units offer the perfect space to dry wet clothing and workwear on site. Designed for off-grid and other applications, we can help you create the perfect towable or static drying solution to suit your needs. Our drying units can be self-contained and solar-powered or can fit into your current power set-up. Whatever you choose, an ultra-low consumption drying system will keep costs and emissions to a minimum.

OFF-GRID DRYING JUST GOT EASIER

In the unpredictable UK climate, having a facility on site to dry wet clothing is not just a legal requirement but also a must from an employee welfare perspective, keeping the workforce dry and comfortable.

However, traditional drying rooms are a major power draw on worksites consuming significant energy and contributing heavily to greenhouse gas emissions, not to mention generating exorbitant costs for the user.

We have the answer. Introducing the GenFree Dry Space - a convenient, standalone, low-energy, low-emission drying means of drying clothes and workwear on any off-grid site.



- **Save on fuel - up to £400 per week in a 12ft GenFree Dry Space unit**
- **Cut CO₂ and other harmful emissions**
- **Highly efficient way to dry clothes using far less energy than traditional methods**
- **Ultra-low consumption drying system uses 0.25l of fuel per hour. Can be powered by HVO biofuel or diesel interchangeably.**
- **24/7 remote monitoring system**
- **Report on fuel and carbon savings easily and accurately**
- **Thermostat & humidity sensor controlled**
- **No noise - GenFree™ drying units offer silent operation day & night**
- **Full-width drying cupboards with slifix hangers and steel boot racks**
- **Towable unit is cost-effective & easy to transport**



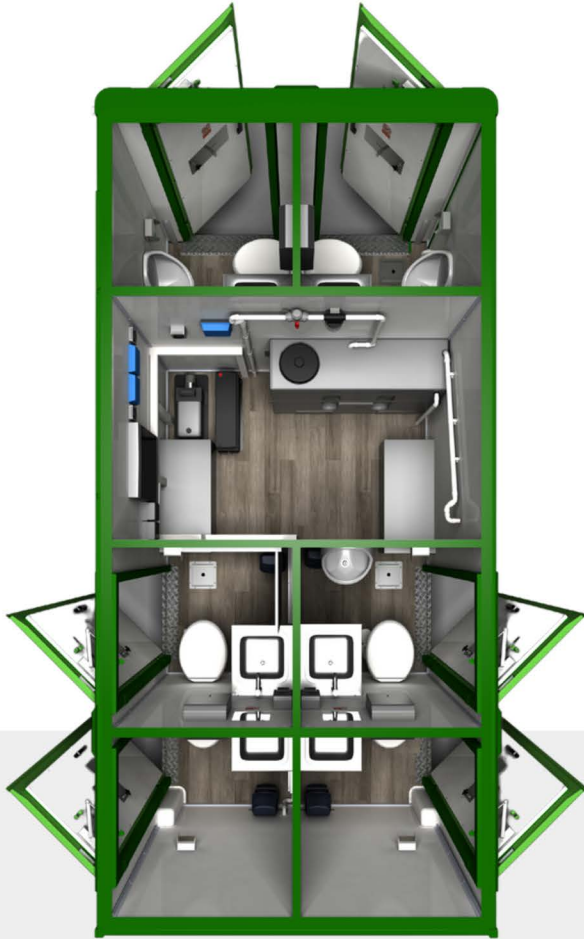
TOILET BLOCKS



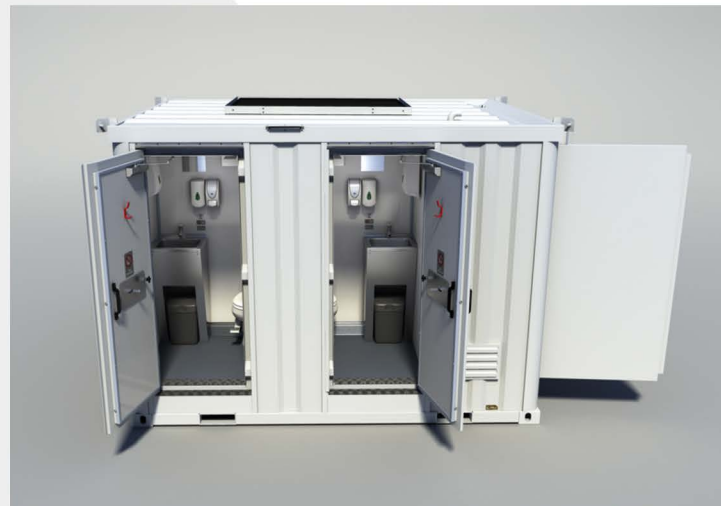
Providing modern-day facilities for modern-day worksites with an unbeatable environmental performance, our GenFree, Deep Green and Standard Toilet Space units are revolutionising the portable toilet market. These self-contained units are available in a various sizes, static or towable versions and female/male configuration of choice.

SPEND A PENNY SAVE THE PLANET

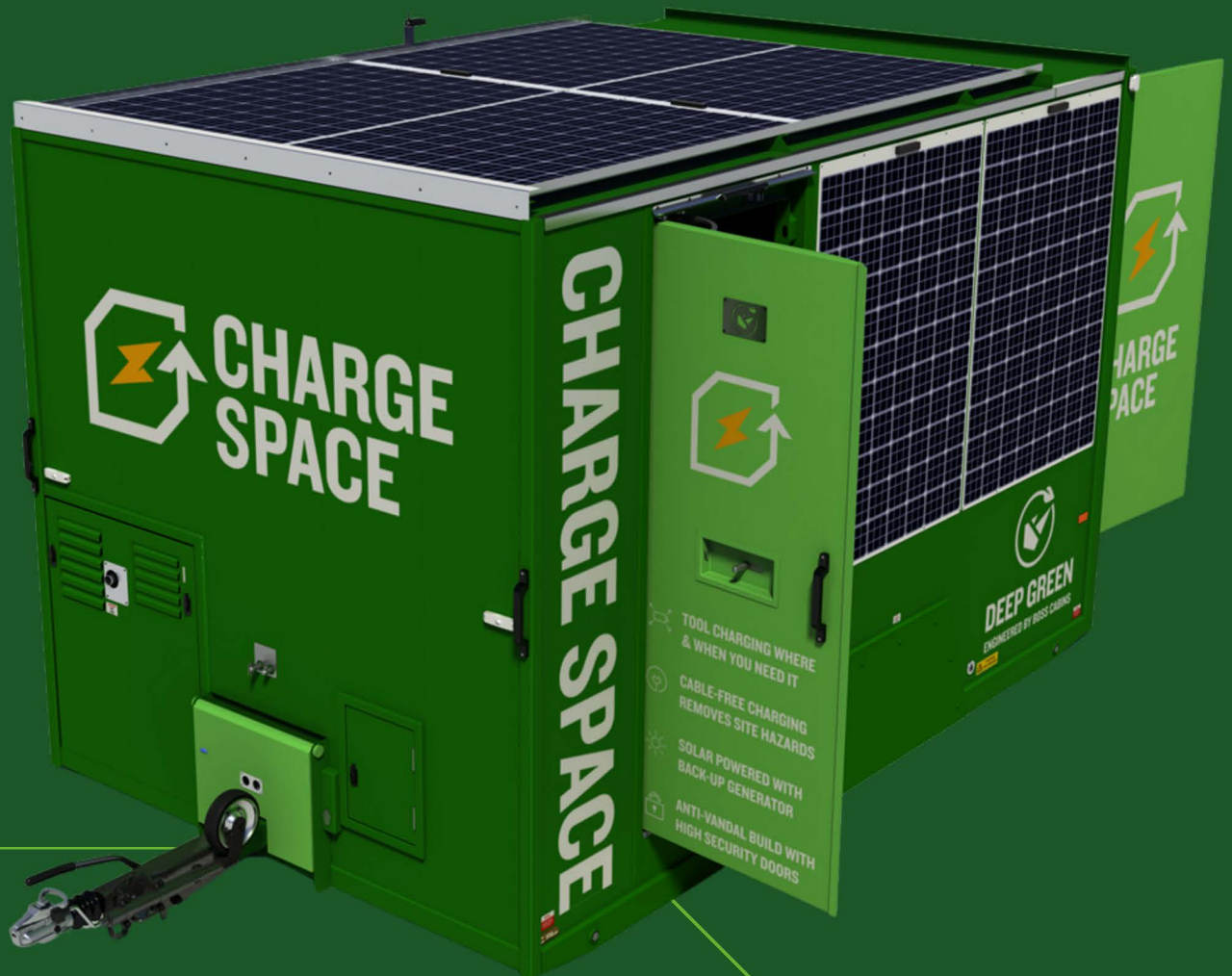
As well as fulfilling all minimum and supplementary UK/EU legal requirements, our portable standalone Toilet Space range goes above and beyond with exceptional levels of functionality, convenience and environmental performance. Fresh water toilets provide a pleasant odourless environment with no harmful chemicals necessary and include attractive stainless steel sink units with instant hot water supply. Micro flush toilets and waterless urinals use less water and produce less waste than standard toilets. Choose our Deep Green or GenFree specifications to take your environmental savings to another level.



- Ultra-low emission operation with option of zero emissions with GenFree. Suitable for ULEZ and other emission-controlled sites.
- Remote tank monitoring allows you to plan waste pump-outs efficiently to minimise site visits and environmental impact.
- Microflush toilets and waterless urinals cut up to 91% of water usage.
- Patented WMPro™ rain harvesting and grey water recycling system cuts service visits by two thirds approx. GenFree and Deep Green toilets built in stainless steel and fitted with WMPro™ system as standard
- Report on fuel and carbon savings easily and accurately
- Silent or extremely quiet running makes Toilet Space perfect for residential areas or night/weekend operations.



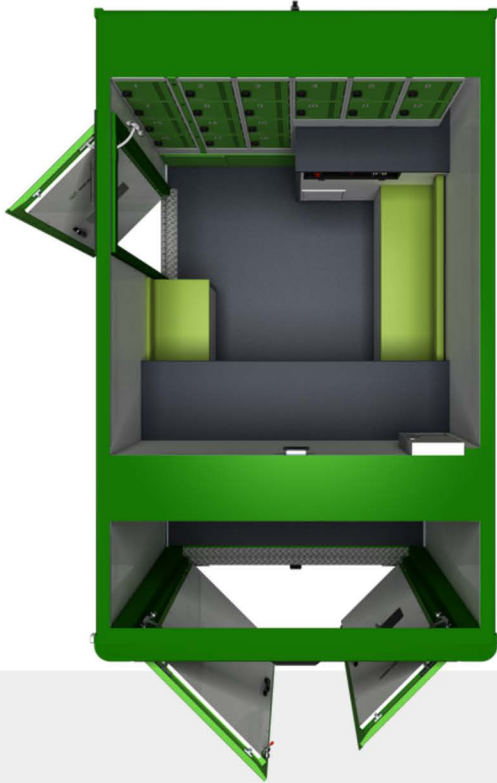
CHARGE STATIONS



The Deep Green Charge Space is a stand-alone solar hybrid solution for onsite charging enabling workers to charge tools and other equipment easily and conveniently with minimum energy use and ultra-low emissions. This high-security solution avoids workers wasting valuable time going off site to charge tools. Static and towable versions available.

CHARGE TOOLS WHEREVER AND WHENEVER YOU NEED

Charge Space units provide a convenient, easy and eco-friendly way to charge tools on site. Power is provided by onboard solar panels which feed into lithium ion batteries with a back-up biofuel generator to recharge if required, or hook up to the mains if preferred, all with a seamless one-touch operation which automatically switches power supply as required. Our high-security towable or static units are fitted with individual lockable compartments sized to your requirements. The self-contained units can be placed anywhere on site that you need charging capacity, improving worksite safety by eliminating the hazards of trailing electric cabling.



- Towable unit is easy to place on site wherever tool charging is needed
- Full steel anti-vandal build with high security door with 3-bolt locking system, anti-prise strip and keyholes positioned to prevent lock chiselling
- Extensive solar panels and large battery storage capacity combine to reduce generator run time significantly, cutting fuel use, emissions and noise pollution
- Lockers accessed from inside cabin to prevent theft and protect from the weather
- 24/7 remote monitoring and control system
- Report on fuel and carbon savings easily and accurately
- Patented Infinity back up generator with automatic oil change. 2000 hour service interval compared to standard 250 hours.
- Seamless automated operation – unit switches power supply from solar to battery to generator with no user intervention needed.



SECURE STORAGE



Why take all your tools and small plant items off site each night when you can store them all on site in our Tool Space cabins? Our towable units offer a highly secure, versatile and convenient solution that minimises theft risk and makes sure your tools are on site when and where you need them.

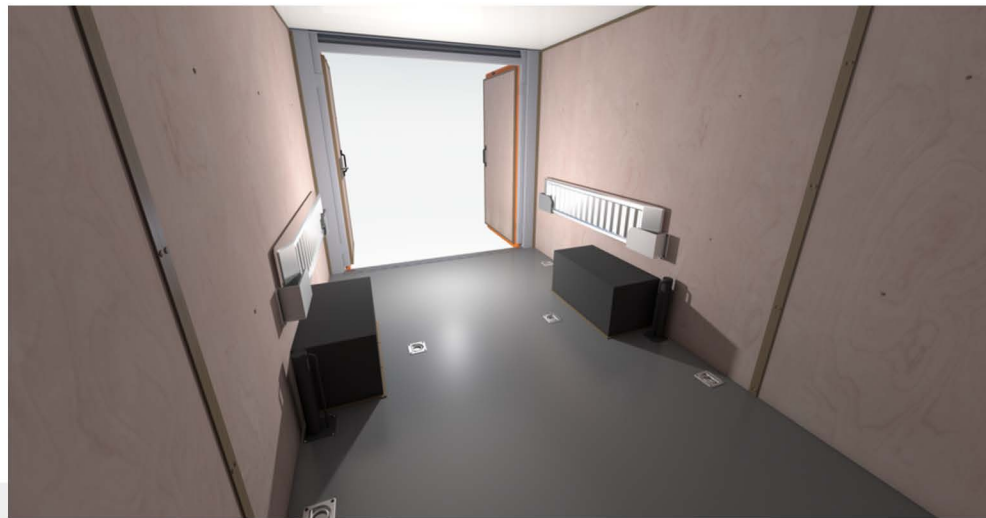
STORE TOOLS SAFELY AND CONVENIENTLY ON SITE



Unlike other mobile tool stores on the market, our Tool Space unit has been designed from the wheels up specifically to provide a flexible and safe environment to store tools, materials, plant and equipment. It has a bespoke fabricated shell complete with a reinforced floor which can accept loads up to 4500kg.

Tool Space makes working on site more productive and cost-effective - operatives don't waste time or spend on fuel collecting and returning tools to an off-site depot. You can also safely store materials which are restricted by Health & Safety regulations from being carried in workforce vans. Plus being able to store tools and material on site helps to keep vans within weight and space requirements

If you want electric hydraulics and interior LED lighting for your Tool Space, then you can choose our 'Solar Pack' upgrade and enjoy those features without the need for an on-board generator.



- Phenolic floor with lashing points
- Rear doors are split and provide a wide uninterrupted entrance when open.
- Drive small plant into unit through extra-wide doors using the ramps provided
- Full steel, 3 bolt, high security doors with anti-prise strips and magnetic door stays
- Supplied with two aluminium loading ramps stowed in purpose built holders
- Transport payload 750kg
- Towable option - cost-effective & easy to transport and deploy on site



The Tool Space range is different from every other mobile tool store on the market in that it can store small plant and equipment as listed below:

- Vibration Plates • Site Dumpers • Mixers • Mini Excavators • Rollers





**"BOSS AFTERCARE HAVE
NEVER LET US DOWN"**

**HARRY PHILPIN, PLANT MANAGER,
RANGER PLANT HIRE**

**"ALWAYS SUPERB QUALITY WORK
DELIVERED ON TIME"**

**ALEX JONES,
DIRECTOR, LIBERTY GUARD**



TAKE THE WORRY OUT OF WELFARE



**WHATEVER YOUR PROBLEM,
WE'LL TAKE CARE OF IT.**

We're the only cabin manufacturer to offer a full aftercare service for your entire welfare fleet, irrespective of make.



**DEDICATED
PARTS STORE**



**AFTERCARE &
MAINTENANCE**



**ACCIDENT &
REPAIR CENTRE**



REFURBISHMENT



**SERVICE
TRAINING**

✓ All Cabin Brands

✓ Premium 7 Day
Turnaround

✓ Next Day Delivery
On Parts

✓ Free Collection &
Delivery

✓ On-site Inspection
& Quotation

✓ Convenient Online
Parts Ordering

Boss Cabins

BCS House, Pinfold Road,
Bourne, Lincolnshire, PE10 9HT

sales@bosscabins.co.uk

+44 (0)1778 300475

www.bosscabins.co.uk



We are proud to say we are associated with



SUPPLY CHAIN SUSTAINABILITY
SCHOL

WE MEAN BUSINESS