

The **Global Air Traffic Controllers Alliance** is a coalition of like-minded labour unions.

We are a collective voice contributing to the safety and efficiency of the modern airspace system by influencing technology and progressing collaborative industry relations.

The increasing privatisation and commercialisation of air traffic services, together with new technologies, will change the nature of air traffic management and the structures of the companies or agencies that provide air traffic services.

We believe that to successfully integrate new users and technologies, our experts have a critical role to play in the development, safe implementation, and improving efficiencies in the world's airspace system. Safety must be a priority, but our involvement will facilitate successful change.

Recognising that ATM is a global industry, the member unions of The Alliance work together to meet individual and shared challenges while raising important issues to a worldwide audience while developing and cultivating global relationships.

It is imperative that the role of the workforce is not lost in the development of new procedures, technologies, and new initiatives.

## CONTACT US!



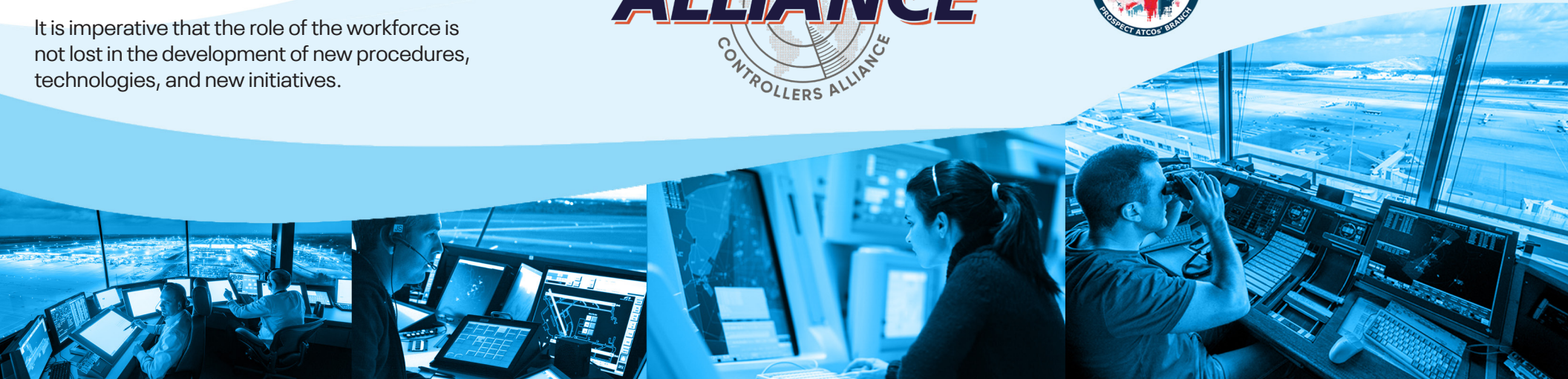
<https://www.atcalliance.world>



[contact@atcalliance.world](mailto:contact@atcalliance.world)



[@TheATCAlliance](https://twitter.com/TheATCAlliance)



## CIVIL AIR AUSTRALIA

Air Traffic Controllers | 900

Non-ATC | 1,100

Airspace | 20,000,000 sq mi/32,186,880 km

Avg Daily Passengers | 460,000

Avg Annual Passengers | 168,000,000

Daily Operations | 8,800

Operations in 2018 | 3,224,000



## NZALPA

Air Traffic Controllers | 360

Non-ATC | 2,240

Airspace | 30,000,000 sq mi/48,280,320 km

Avg Daily Passengers | 130,000

Avg Annual Passengers | 50,000,000

Daily Operations | 3,000

Operations in 2018 | 1,000,000

## CATCA

Air Traffic Controllers | 2,000

Airspace | 18,000,000 sq mi/28,968,192 km

Avg Daily Passengers | 410,959

Avg Annual Passengers | 150,000,000

Daily Operations | 9,041

Operations in 2018 | 3,300,000



## NATCA

Air Traffic Controllers | 15,864

Non-ATC | 3,695

Airspace | 47,314,713.6 sq mi/76,145,650.4 km

Avg Daily Passengers | 2,437,219

Avg Annual Passengers | 1,000,000,000

Daily Operations | 379,726

Operations in 2018 | 138,613,388

## USCA

Air Traffic Controllers | 1,950

Airspace | 846,000 sq mi/1,361,505 km

Avg Daily Passengers | 723,010

Avg Annual Passengers | 263,900,000

Daily Operations | 5,733

Operations in 2018 | 2,092,527



## PROSPECT

Air Traffic Controllers | 2,100

Non-ATC | 150

Airspace | 3,200,000 sq mi/5,149,900.8 km

Avg Daily Passengers | 1,312,500

Avg Annual Passengers | 480,000,000

Daily Operations | 7,500

Operations in 2018 | 2,600,000

## THE ALLIANCE BY THE NUMBERS

The Alliance controls over 119,630,700 sq mi/ 192,526,949 km of airspace, providing service to over 2 billion passengers annually in 413,836 daily operations.

### REPRESENTATION

30,104 Aviation Safety Professionals

23,104 Air Traffic Controllers

### PASSENGERS

4,822,979 Daily Average

2,001,485,000 Annual Average

### OPERATIONS

413,836 Daily Operations

150,829,915 Operations in 2018

### FACILITIES

39 Enroute Centers

163 TRACONs

Over 644 Towers