

Reliable Connectivity

When it's needed most

BlackOut

Helical Counter Drone Antennas

SINGLE DUAL TRI BAND

900 MHz / GPS / 2.4 GHz / 5.8 GHz



HANDHELD



VEHICULAR



UNMANNED

Experience the advantages of integrating TACO's BlackOut series of circularly polarized (CP) helical antennas into your C-UAS

Maximum signal loss of only 3dB at any orientation

Consistently and substantially stronger connection

Ensures greater control of the target UAS

Modern security demands reliable tools to protect people, places and possessions. TACO Antenna is a leading manufacturer of innovative, engineered antenna products for a wide array of uses. Our industry leading BlackOut counter drone series has been specifically developed to power compact C-UAS devices.

TACOTM
ANTENNA

SINGLE BAND CIRCULAR POLARIZED

TACO's single frequency circular polarized helical antennas are enclosed with an impact resistant polycarbonate radome for protection from the environment. Our antennas are especially suited to harsh environments that have severe reflections. The reflected signal of our circularly polarized helical simply reverses polarization, resulting in less interference and superior multipath rejection than with conventional linearly polarized antennas. No matter your environment, TACO helicals offer reliability and consistency, even under the most difficult conditions.

ELECTRICAL SPECIFICATIONS		690-1000 MHz	900 MHz
MODEL	H-900-12-NF		
GAIN - dBic	12.0		
VSWR	2:1		
POL.	RHCP		
HPBW - °	43		
POWER - W	100		
CONNECTOR	N F		
MECHANICAL SPECIFICATIONS			
LENGTH - in (cm)	18.6 (47.2)		
GRD PLANE DIA - in (cm)	12.0 (30.5)		
WEIGHT - lbs (kg)	4.3 (2.0)		
COLOR	Flat Black		
MOUNT	N/A		



Rugged Construction
Polycarbonate radome and sealing gasket ensure water and dust ingress protection

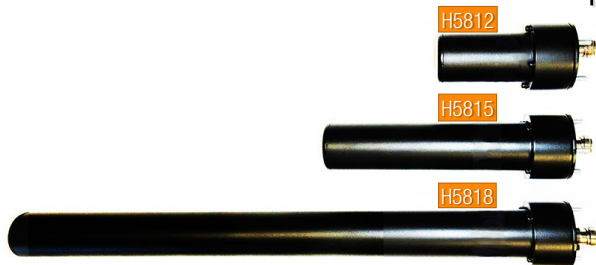
Reliable Coverage
Broad coverage from 690 MHz to 1 GHz with less interference than linear signal for cleaner line of sight

GPS L1 (1575) & L2 (1227.6) MHz		ELECTRICAL SPECIFICATIONS	
MODEL	H-L1L2-13-NF		
GAIN - dBic	13.0		
VSWR	2:1		
POL.	RHCP		
HPBW - °	41		
POWER - W	100		
CONNECTOR	N Female		
MECHANICAL SPECIFICATIONS			
LENGTH - in (cm)	18.1 (46.0)		
GRD PLANE DIA - in (cm)	6.0 (15.2)		
WEIGHT - lbs (kg)	1.9 (0.9)		
COLOR	Flat Black		
MOUNT	4 studs		

Our **BlackOut H-L1L2-13-NF** delivers counter drone coverage to the L1 and L2 GPS frequencies, with a high-power output to create maximum energy transmission.



ELECTRICAL SPECIFICATIONS				4900-6000 MHz	5.8 GHz
MODEL	H5812	H5815	H5818		
GAIN - dBic	12	15	18		
HPBW - °	47-54	34-39	20-24		
VSWR	2:1				
POL.	RHCP				
POWER - W	100				
CONNECTOR	N F or SMAF				
MECHANICAL SPECIFICATIONS					
LENGTH - in (cm)	4.0 (10.2)	7.5 (19.1)	18.1 (46.0)		
GRD PLANE DIA - in (cm)	2.0 (5.1)				
WEIGHT - lbs (kg)	0.3 (0.14)	0.4 (0.17)	0.6 (0.25)		
COLOR	Flat Black				
MOUNT	3 studs				



TACO BlackOut H5800 Series

- RHCP counter UAS antennas suitable for challenging environments.
- Can be integrated into portable handheld systems, semi-permanent field mast and fixed installations.
- Engineered to deliver wide band performance in the 4.9 to 6.0 GHz range with gain from 12 to 18 dBic.

❖ ADDITIONAL APPLICATIONS

Mining, public safety, elevator & ventilation shafts, video surveillance, warehousing, tunnels, downtown corridors, parking lots, Wi-Fi Mesh, WiMax, ISM, VOiP, RFID, Point-to-Point, wireless security cameras.

DUAL BAND CIRCULAR POLARIZED

TACO **BlackOut** DH models use our patented dual helical configuration. Suitable for challenging environments, **BlackOut** Counter UAS antennas can be integrated into larger portable systems, and semi-permanent and fixed field installations.

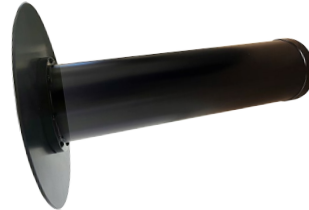
900 MHz/2.4 GHz

690-1000 MHz / 2400-2550 MHz

ELECTRICAL SPECIFICATIONS

MECHANICAL SPECIFICATIONS

The TACO **BlackOut** DH0911-2412-NF is a circular polarized dual helical antenna engineered to deliver wideband performance in the 690 MHz to 1.0 GHz, and 2.4 to 2.5 GHz range for counter drone applications.



MODEL	DH0911-2412-NF			
FREQUENCY - GHz	900	2.4	LENGTH - in (cm)	16.1 (40.9)
GAIN - dBic	11	12	GRD PLANE DIA - in (cm)	12.0 (30.5)
VSWR	2:1		WEIGHT - lbs (kg)	4.3 (2.0)
POL.	LHCP	RHCP	COLOR	Flat Black
HPBW - °	47	32	MOUNT	N/A
POWER - W	100			
ISOLATION - dB (min)	-15			

ELECTRICAL SPECIFICATIONS

2400-2550 MHz / 5700-58500 MHz

2.4/5.8 GHz

MODEL	DH2412-5813		DH2413-5814		DH2415-5815	
FREQUENCY - GHz	2.4	5.8	2.4	5.8	2.4	5.8
GAIN - dBic	12	13	13	14	15	15
VSWR	2:1		2:1		2:1	
POLARIZATION	RHCP	LHCP	RHCP	LHCP	RHCP	LHCP
HPBW - °	43	31	43	31	28	19
POWER - W	100		100		100	
CONNECTOR	SMAF		SMAF		SMAF	

MECHANICAL SPECIFICATIONS

LENGTH - in (cm)	8.0 (20.3)	8.0 (20.3)	16.0 (40.6)
GRD PLANE DIA - in (cm)	3.0 (7.6)	4.5 (11.3)	4.5 (11.3)
WEIGHT - lbs (kg)	0.6 (0.27)	0.7 (0.3)	1.0 (0.45)
COLOR	Flat Blk	Flat Blk	Flat Blk
MOUNT	4 studs	4 studs	4 studs



TACO's three **BlackOut** DH24-58

models use our patented dual helical configuration. Each provides complete coverage in the 2.4 and 5.8 GHz frequencies, but with different gains and dimensions to better suit your specific need.

TRI BAND CIRCULAR POLARIZED

900 MHz/2.4/5.8 GHz

ELECTRICAL SPECIFICATIONS

TACO's **BlackOut** Tri-band helical antennas

operate in three frequency bands simultaneously. The engineered design ensures a clean signal with low VSWR across their full signal ranges. This exceptional performance makes them ideal for environments previously considered too reflective. With a combination of strength and precision TACO has become one of the industry's most trusted names.



MODEL	TH0911-2412-5813-NF			TH0911-2412-5813-NF-6		
FREQ - GHz	0.69-1.0	2.4-2.5	5.7-5.85	0.76-1.0	2.4-2.5	5.7-5.85
GAIN - dBic	11	12	14	11	12	14
VSWR	2:1			2:1		
POL.	LHCP	RHCP	LHCP	LHCP	RHCP	LHCP
HPBW - °	46	32	12	50	30	12
POWER - W	100			100		

MECHANICAL SPECIFICATIONS

LENGTH - in (cm)	16.1 (46.0)	16.1 (46.0)
WEIGHT - lbs (kg)	4.3 (2.0)	3.3 (1.5)
GRD PLANE DIA - in (cm)	12.0 (30.5)	6.0 (15.2)
COLOR	Flat Black	Flat Black
MOUNT	Panel or Mast	Panel or Mast

❖ ADDITIONAL APPLICATIONS

Mining, public safety, elevator & ventilation shafts, video surveillance, warehousing, tunnels, downtown corridors, parking lots, Wi-Fi Mesh, WiMax, ISM, VOiP, RFID, Point-to-Point, wireless security cameras.


Ground-To-Air
Dipoles


UHF Satcom


Shipboard


Directional


Custom

TACOTM
ANTENNA

Innovative
antenna
solutions
since 1934.

tacoantenna.com



Europe Sales

Tel: (+44) 07538 737796

Location:

[Systemware Europe Ltd.](#)

jbarton@tacoantenna.com

TACOTM
ANTENNA
A DIVISION OF WADE ANTENNA

HEAD OFFICE
29 Sharp Road
Brantford, ON
Canada N3T 5L8

A TRUSTED LEADER
IN ANTENNA INNOVATION
SINCE 1934