

by Atech

Makron

AIR TRAFFIC MANAGEMENT

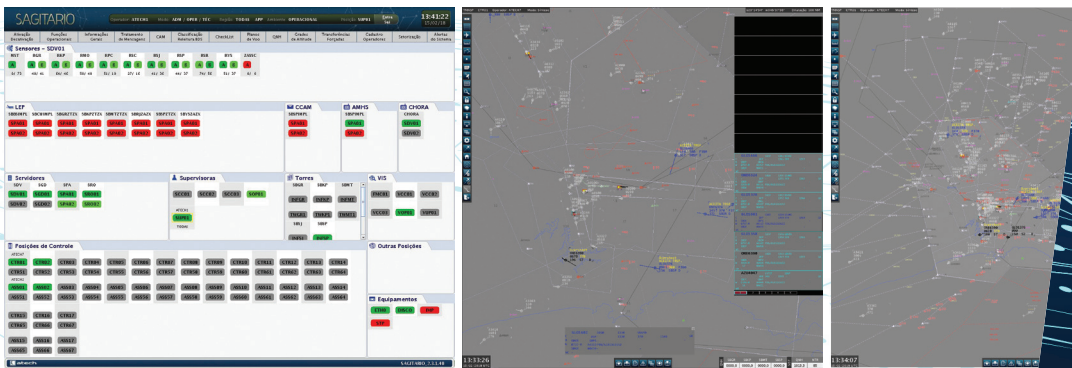
ATC
SAGITARIO

MAXIMUM CONNECTIVITY AND VISUALIZATION TO MAKE THE BEST DECISIONS

SAGITARIO integrates all available sensors and communication infrastructure to provide all the necessary data to air traffic controllers to manage the airspace under their responsibility. Developed by Atech, an Embraer Group Company, SAGITARIO is part of Makron, a complete set of ATM solutions that brings together decades of expertise

THE EVOLUTION OF AIR TRAFFIC CONTROL

SAGITARIO was developed by Atech in a partnership with DECEA, with the participation of air traffic controllers, propitiating improvements in the communication, navigation, and surveillance. Developed according to ICAO standards, SAGITARIO brings to you the air traffic controller vision, offering a set of operational tools to support the decision-making process, gate to gate.



GRUPO EMBRAER



SAGITARIO is in operation in more than 30 centers in Brazil and abroad. It was essential to improve the air traffic control services and the safety of operations during international events such as the Brazil World Cup, in 2014, and the Olympic Games in Rio de Janeiro, in 2016. developing high technology solutions supporting decision-making processes.

TOTAL FLIGHT SAFETY, FROM TAKEOFF TO LANDING

SAGITARIO provides resources for managing en-route and approaching airspace. Its Situational Display was developed considering the most up to date human factors related to the Air Traffic Management.

The system is focused on the situational awareness. Medium Term Conflict Detection alerts and Conflict Probe after all clearances or flight plan modification help the air traffic controllers on their duties. SAGITARIO implements the Safety Net Functions by triggering alerts based on EUROCONTROL recommendations, including STCA, MSAW, CLAM, RAM, APW and APM. Due to its multi-sensor capability, SAGITARIO enhances conflict prediction using data tracking provided by sensors like radars, ADS-B, and Multilateration.

Using international standards protocols, such as AIDC and OLDI, SAGITARIO integrates into other ATS units (TWR, APP, ACC, ATFM) via electronic coordination, introducing gate to gate coordination. In addition, as part of the gate to gate concept, SAGITARIO is capable of sharing tracking information with other ATS Units, including military ones, based on standard protocols.

SAGITARIO implements a Multi-sensor Data Fusion processor fully compliant with EUROCONTROL recommendations, with capability of processing a great number of radars from different vendors, as well as ADS-B and WAM. SAGITARIO also supports datalink communication (ADS-C / CPDLC) based on standard regulations.

Using an innovative architecture, SAGITARIO supports a multi role environment with operational mode, backup mode, training and system updating mode on the same site.

TECHNICAL DESCRIPTION

Flight Data Processor; Multi-sensor Processor; Data Recording; Situational Display; MTCD, Safety Net, Technical and Operational Supervision; Operation Reports, Support to virtualization and clustering; High Scalability;



GRUPO EMBRAER

Meet Atech complete
businesses solutions. Contact us:
+55 (11) 3103-4600
Rua do Rocio, 313, 4th floor - Vila Olímpia
São Paulo - SP - Brazil
atech@atech.com.br - www.atech.com.br