



**CITY OF LAWDALE
AGENDA
PARKS, RECREATION AND
SOCIAL SERVICES COMMISSION**

Monday, June 9, 2025, 6:30 PM
Council Chambers
14717 Burin Ave
Lawndale, CA 90260

Copies of this agenda and written documentation related to each agenda item may be obtained prior to the meeting at the Hofmann Community Center, located at 14700 Burin Avenue. Interested parties may contact the Community Services Department at (310) 973-3270 for clarification regarding individual agenda items.

A. CALL TO ORDER AND ROLL CALL

B. FLAG SALUTE

C. APPROVAL OF MINUTES

1. Approval of the Minutes from the May 12, 2025, Commission Meeting
— Staff recommend that the Commission review and approve the minutes from the May 12, 2025, Parks, Recreation and Social Services Commission meeting.

D. PRESENTATIONS

E. ORAL COMMUNICATIONS - Items not on the agenda (Public Comments)

F. COMMENTS FROM COMMISSIONERS

G. ADMINISTRATIVE MATTERS

2. Lawndale Beat Ridership Report - May 2025
— Staff recommend that the Commission Accept and File the Lawndale Beat Ridership Report for May 2025.
3. Consideration of a PRSSC Booth at the 2025 Music Festival

H. DIRECTOR'S REPORT

4. Director's Report - June 9, 2025

I. ITEMS FROM COMMISSIONERS

5. Update on the Youth Development Center and Skatepark Project - New Commissioners

J. SPECIAL EVENTS UPDATE

6. Music Festival: Saturday, June 28, 2025

K. MISCELLANEOUS

L. ADJOURNMENT

The next regularly scheduled meeting of the Lawndale Parks, Recreation and Social Services Commission will be held at 6:30 p.m. on Monday, June 23, 2025, in the Lawndale City Hall Council Chamber, 14717 Burin Avenue, Lawndale, California

It is the intention of the City of Lawndale to comply with the Americans with Disabilities Act (ADA) in all respects. If, as an attendee or a participant at this meeting, you need special assistance beyond what is normally provided, we will attempt to accommodate you in every reasonable manner. Please contact the Community Services Department at (310) 973-3270, at least forty-eight (48) hours prior to the meeting to inform us of your needs and to determine if accommodation is feasible. Please advise us at that time if you will need accommodation to attend or participate in meetings on a regular basis.

I hereby certify under penalty of perjury under the laws of the State of California that the agenda for the regular meeting of the Lawndale Parks, Recreation and Social Services Commission to be held on June 9, 2025, was posted no less than 72 hours prior to the meeting.

Jason Minter

Director of Community Services

Date Posted: June 6, 2025



CITY OF LAWDALE

14717 BURIN AVENUE, LAWDALE, CALIFORNIA 90260
PHONE (310) 973-3200 ♦ www.lawndalecity.org

DATE: June 9, 2025
TO: Honorable Mayor and City Council
FROM: Jason Minter, Community Services Director
PREPARED BY: Jason Minter, Community Services Director
SUBJECT: **Approval of the Minutes from the May 12, 2025, Commission Meeting**

Staff recommend that the Commission review and approve the minutes from the May 12, 2025, Parks, Recreation and Social Services Commission meeting (Attachment A).

Attachments

[Attachment A: 5-12-25 PRSSC Minutes](#)



**MINUTES
CITY OF LAWDALE
PARKS, RECREATION AND SOCIAL SERVICES COMMISSION
REGULAR MEETING
MONDAY, MAY 12, 2025**

A. CALL TO ORDER AND ROLL CALL

Vice Chairperson Wood called the meeting to order at 6:34 pm in the City Hall Council Chambers, located at 14717 Burin Avenue, Lawndale, CA 90260.

Members Present: Commissioner Castro
 Commissioner Collins
 Vice Chairperson Wood

Members Absent: Chairperson Miller

Staff Present: Community Services Director, Jason Minter

B. FLAG SALUTE

Commissioner Castro led the flag salute.

C. APPROVAL OF MINUTES

1. Approval of the Minutes from the April 28, 2025, Commission Meeting

A motion was made by Commissioner Collins and seconded by Commissioner Castro to approve the April 28, 2025, minutes as written.

Motion carried 3-0, absent Chairperson Miller.

D. PRESENTATIONS

None.

E. ORAL COMMUNICATIONS – Items not on the agenda (Public Comments)

Dane Kennedy and Brittany Fay, both from Redondo Union High School, introduced themselves and their interest in the Commission as a part of a school assignment.

F. COMMENTS FROM COMMISSIONERS

Vice Chairperson Wood mentioned her interest in the Fireworks Stand discussion that was on the agenda.

Commissioner Collins asked about the improvements to Jane Addams Park, including the panel and the wood chips.

G. ADMINISTRATIVE MATTERS

2. Accept and File the Lawndale Beat Ridership Report for April 2025

After a brief introduction from Director Minter, Commissioner Wood made a motion to accept and file the Lawndale Beat Ridership Report for April 2025. The motion was seconded by Commissioner Collins.

Motion carried 3-0, absent Chairperson Miller.

3. PRSSC Operation of a Fireworks Stand.

Director Minter provided a summary of the new information that was included in the packet, specifically the attachments showing the agreement with TNT and the Council Policy on Stand Operations.

After the staff presentation, there were questions from each of the Commissioners about the process, schedule, and operational hours. The Commission wasn't excited about having to forego a Fireworks Stand in 2025, however the loss of a Commissioner was going to make it very challenging. Ultimately a motion was made by Commissioner Collins that the Commission withdrawl the application for a Fireworks Stand in 2025 due to the recent departure of a Commission, and create a lessons learned file to be better equipped to host a Fireworks Stand in 2026. The motion was seconded by Commissioner Wood.

Motion carried 2-0-1, with Commission Castro abstaining and absent Chairperson Miller.

H. DIRECTOR'S REPORT

4. Director's Report

Director Minter shared more information on the Commissioners resignation, including thanking him for his 9 years serving the City on the Commission, along with his dedication, and his commitment to the community. He then mentioned the process for appointing a replacement and he mentioned taking the final Commissioner picture. He provided brief updates on the Hopper Park Shade Cover project and the status of Rogers Anderson Park/School irrigation project, shared information on Youth in Government Day, and reminded the Commission of the dark night on May 26.

Director Minter then provided an update on Jane Addams Park, and that he would get back to the Commission with an update on the wood chip installation at both Addams and Anderson Parks.

I. ITEMS FROM COMISSIONERS

None.

J. SPECIAL EVENT UPDATE

5. Memorial Day Remembrance Event

Director Minter shared that Commissioners were welcome to attend the Memorial Day Remembrance event that will be held on Memorial Day.

6. Health, Safety and Pet Fair

The Health, Safety and Pet Fair is currently in the planning process. Director Minter shared some of the highlights for the event, including the addition of a Ninja Nation obstacle course. A lot of excitement already for the Ninja Nation Course at this year's fair.

7. Concert in the Park

Director Minter shared that planning was still in the early stages for the concert but there was a change of dates to June 28.

K. MISCELLANEOUS

None.

L. ADJOURNMENT

Vice Chairperson Wood adjourned the meeting at 7:35 pm. to the next regularly scheduled meeting on Monday, June 9, 2025, at 6:30 pm in the Lawndale City Council Chambers, 14717 Burin Avenue.

Kenneth Miller, Chairperson

Attest: _____
Jason Minter, Community Services Director



**CITY OF LAWDALE
PARKS, RECREATION, AND
SOCIAL SERVICES COMMISSION**

14717 BURIN AVENUE, LAWDALE, CALIFORNIA 90260
PHONE (310) 973-3200 ♦ www.lawndalecity.org

DATE: June 9, 2025
TO: Honorable Chairperson and Commissioners
PREPARED BY: Jason Minter, Community Services Director
RE: Lawndale Beat Ridership Report - May 2025

The Lawndale Beat Ridership Report for May 2025 is attached for your review. Staff recommend that the Commission Accept and File the report.

Attachments

[Lawndale Beat Ridership Report - May 2025.pdf](#)

SUMMARY MANAGEMENT REPORT
May 2025

FIXED ROUTE SUMMARY

	Total Passengers	Total Revenue Hours	Revenue Miles	Ridership / Rev Hour	Collected Fares	Farebox Recovery per Passenger	On-Time Percentage	# Of Operating Days
Residential	686	327.80	3,546	2.09	\$100.36	\$0.15	89.85%	31
Express	405	301.33	4,104	1.34	\$120.40	\$0.30	91.23%	31
Total	1,091	629.13	7,650	1.73	\$220.76	\$0.20	90.59%	

LAWNDALE BEAT FARE COUNT REPORT
FOR THE MONTH OF: **May-25**

		Residential			Express			TOTALS		
		Currency	Coins	Total	Currency	Coins	Total	Currency	Coins	Total
1-May	Thursday	\$3.00	\$5.35	\$8.35	\$6.00	\$4.70	\$10.70	\$9.00	\$10.05	\$19.05
2-May	Friday	\$0.00	\$0.50	\$0.50	\$1.00	\$8.45	\$9.45	\$1.00	\$8.95	\$9.95
3-May	Saturday	\$1.00	\$0.00	\$1.00	\$0.00	\$2.25	\$2.25	\$1.00	\$2.25	\$3.25
4-May	Sunday	\$1.00	\$0.50	\$1.50	\$1.00	\$0.82	\$1.82	\$2.00	\$1.32	\$3.32
5-May	Monday	\$4.00	\$3.75	\$7.75	\$3.00	\$4.00	\$7.00	\$7.00	\$7.75	\$14.75
6-May	Tuesday	\$4.00	\$6.31	\$10.31	\$0.00	\$3.40	\$3.40	\$4.00	\$9.71	\$13.71
7-May	Wednesday	\$5.00	\$1.50	\$6.50	\$3.00	\$0.55	\$3.55	\$8.00	\$2.05	\$10.05
8-May	Thursday	\$1.00	\$4.50	\$5.50	\$3.00	\$5.24	\$8.24	\$4.00	\$9.74	\$13.74
9-May	Friday	\$1.00	\$1.55	\$2.55	\$2.00	\$2.46	\$4.46	\$3.00	\$4.01	\$7.01
10-May	Saturday	\$0.00	\$0.00	\$0.00	\$2.00	\$0.76	\$2.76	\$2.00	\$0.76	\$2.76
11-May	Sunday	\$0.00	\$0.00	\$0.00	\$0.00	\$0.00	\$0.00	\$0.00	\$0.00	\$0.00
12-May	Monday	\$0.00	\$0.00	\$0.00	\$2.00	\$5.15	\$7.15	\$2.00	\$5.15	\$7.15
13-May	Tuesday	\$5.00	\$4.67	\$9.67	\$0.00	\$0.00	\$0.00	\$5.00	\$4.67	\$9.67
14-May	Wednesday	\$0.00	\$0.00	\$0.00	\$2.00	\$1.56	\$3.56	\$2.00	\$1.56	\$3.56
15-May	Thursday	\$0.00	\$0.00	\$0.00	\$3.00	\$2.35	\$5.35	\$3.00	\$2.35	\$5.35
16-May	Friday	\$3.00	\$1.10	\$4.10	\$0.00	\$0.00	\$0.00	\$3.00	\$1.10	\$4.10
17-May	Saturday	\$1.00	\$4.56	\$5.56	\$0.00	\$0.00	\$0.00	\$1.00	\$4.56	\$5.56
18-May	Sunday	\$0.00	\$0.00	\$0.00	\$0.00	\$0.00	\$0.00	\$0.00	\$0.00	\$0.00
19-May	Monday	\$0.00	\$0.00	\$0.00	\$4.00	\$5.06	\$9.06	\$4.00	\$5.06	\$9.06
20-May	Tuesday	\$0.00	\$0.00	\$0.00	\$1.00	\$3.75	\$4.75	\$1.00	\$3.75	\$4.75
21-May	Wednesday	\$0.00	\$0.00	\$0.00	\$2.00	\$0.00	\$2.00	\$2.00	\$0.00	\$2.00
22-May	Thursday	\$0.00	\$0.00	\$0.00	\$3.00	\$2.60	\$5.60	\$3.00	\$2.60	\$5.60
23-May	Friday	\$0.00	\$0.00	\$0.00	\$1.00	\$1.85	\$2.85	\$1.00	\$1.85	\$2.85
24-May	Saturday	\$1.00	\$1.10	\$2.10	\$2.00	\$2.00	\$4.00	\$3.00	\$3.10	\$6.10
25-May	Sunday	\$2.00	\$0.95	\$2.95	\$2.00	\$0.85	\$2.85	\$4.00	\$1.80	\$5.80
26-May	Monday	\$5.00	\$0.42	\$5.42	\$0.00	\$0.00	\$0.00	\$5.00	\$0.42	\$5.42
27-May	Tuesday	\$2.00	\$5.13	\$7.13	\$1.00	\$2.30	\$3.30	\$3.00	\$7.43	\$10.43
28-May	Wednesday	\$3.00	\$4.75	\$7.75	\$2.00	\$0.50	\$2.50	\$5.00	\$5.25	\$10.25
29-May	Thursday	\$1.00	\$2.92	\$3.92	\$2.00	\$2.05	\$4.05	\$3.00	\$4.97	\$7.97
30-May	Friday	\$1.00	\$3.30	\$4.30	\$4.00	\$4.75	\$8.75	\$5.00	\$8.05	\$13.05
31-May	Saturday	\$1.00	\$2.50	\$3.50	\$0.00	\$1.00	\$1.00	\$1.00	\$3.50	\$4.50
TOTAL FOR THE MONTH		\$45.00	\$55.36	\$100.36	\$52.00	\$68.40	\$120.40	\$97.00	\$123.76	\$220.76

FIXED ROUTE - RIDERSHIP AND FARECOUNT REPORT - RESIDENTIAL

May 2025

		Total Pax	REG CASH	SENIOR & DISABLED	FREE	W/C	TAP SCANS	COLLECTED FARES	PROJECTED FARES	DIFF
Date		0.75c	Free							
Thursday	1-May	40	12	15	11	0	2	8:24	\$9.00	-\$0.65
Friday	2-May	22	1	13	8	0	0	\$0.50	\$0.75	-\$0.25
Saturday	3-May	9	1	7	1	0	0	\$0.00	\$0.75	-\$0.75
Sunday	4-May	4	2	2	0	0	0	\$2.50	\$1.50	\$1.00
Monday	5-May	18	10	6	2	0	0	\$7.75	\$7.50	\$0.25
Tuesday	6-May	34	14	13	7	0	0	\$10.31	\$10.50	-\$0.19
Wednesday	7-May	38	8	12	13	0	5	\$6.50	\$6.00	\$0.50
Thursday	8-May	38	7	16	12	0	3	\$5.50	\$5.25	\$0.25
Friday	9-May	43	3	23	17	0	0	\$2.55	\$2.25	\$0.30
Saturday	10-May	8	0	5	3	0	0	\$0.00	\$0.00	\$0.00
Sunday	11-May	4	0	4	0	0	0	\$0.00	\$0.00	\$0.00
Monday	12-May	27	0	13	8	0	6	\$0.00	\$0.00	\$0.00
Tuesday	13-May	28	13	7	5	0	3	\$9.67	\$9.75	-\$0.08
Wednesday	14-May	19	0	11	7	0	1	\$0.00	\$0.00	\$0.00
Thursday	15-May	35	0	25	6	0	4	\$0.00	\$0.00	\$0.00
Friday	16-May	14	6	7	1	0	0	\$4.10	\$4.50	-\$0.40
Saturday	17-May	17	7	10	0	0	0	\$5.56	\$5.25	\$0.31
Sunday	18-May	7	0	5	1	0	1	\$0.00	\$0.00	\$0.00
Monday	19-May	19	0	10	7	0	2	\$0.00	\$0.00	\$0.00
Tuesday	20-May	18	1	14	3	0	0	\$0.00	\$0.75	-\$0.75
Wednesday	21-May	26	0	17	7	0	2	\$0.00	\$0.00	\$0.00
Thursday	22-May	25	0	21	2	0	2	\$0.00	\$0.00	\$0.00
Friday	23-May	29	0	19	8	0	2	\$0.00	\$0.00	\$0.00
Saturday	24-May	8	3	5	0	0	0	\$2.10	\$2.25	-\$0.15
Sunday	25-May	12	4	0	6	0	2	\$2.95	\$3.00	-\$0.05
Monday	26-May	24	7	11	6	0	0	\$5.42	\$5.25	\$0.17
Tuesday	27-May	21	9	6	3	0	3	\$7.13	\$6.75	\$0.38
Wednesday	28-May	21	10	3	5	0	3	\$7.75	\$7.50	\$0.25
Thursday	29-May	28	6	15	7	0	0	\$3.92	\$4.50	-\$0.58
Friday	30-May	33	6	26	1	0	0	\$4.30	\$4.50	-\$0.20
Saturday	31-May	17	5	9	3	0	0	\$3.50	\$3.75	-\$0.25
Total Weekday		600	113	303	146	0	38	\$83.75	\$84.75	-\$1.00
Total (Sat)		59	16	36	7	0	0	\$11.16	\$12.00	-\$0.84
Total (Sunday)		27	6	11	7	0	3	\$5.45	\$4.50	\$0.95
Grand Total		686	135	350	160	0	41	\$100.36	\$101.25	-\$0.89

FIXED ROUTE - RIDERSHIP AND FARECOUNT REPORT - EXPRESS

May 2025

		Total Pax	REG CASH	SENIOR & DISABLED	FREE	W/C	TAP SCANS	COLLECTED FARES	PROJECTED FARES	DIFF
Date			0.75c	Free						
Thursday	1-May	29	14	12	3	0	2	\$10.70	\$10.50	\$0.20
Friday	2-May	29	12	12	5	0	2	\$9.45	\$9.00	\$0.45
Saturday	3-May	5	3	2	0	0	0	\$2.25	\$2.25	\$0.00
Sunday	4-May	9	2	5	2	0	0	\$1.82	\$1.50	\$0.32
Monday	5-May	13	9	4	0	0	0	\$7.00	\$6.75	\$0.25
Tuesday	6-May	12	5	4	3	0	1	\$3.40	\$3.75	-\$0.35
Wednesday	7-May	16	5	8	3	0	2	\$3.55	\$3.75	-\$0.20
Thursday	8-May	19	11	5	3	0	0	\$8.24	\$8.25	-\$0.01
Friday	9-May	11	6	3	2	0	3	\$4.46	\$4.50	-\$0.04
Saturday	10-May	16	4	12	0	0	0	\$2.76	\$3.00	-\$0.24
Sunday	11-May	1	0	1	0	0	0	\$0.00	\$0.00	\$0.00
Monday	12-May	14	10	3	1	0	2	\$7.15	\$7.50	-\$0.35
Tuesday	13-May	9	0	6	3	0	0	\$0.00	\$0.00	\$0.00
Wednesday	14-May	19	4	15	0	0	1	\$3.56	\$3.00	\$0.56
Thursday	15-May	14	7	6	1	0	0	\$5.35	\$5.25	\$0.10
Friday	16-May	13	0	10	3	0	2	\$0.00	\$0.00	\$0.00
Saturday	17-May	5	0	5	0	0	0	\$0.00	\$0.00	\$0.00
Sunday	18-May	4	0	0	4	0	0	\$0.00	\$0.00	\$0.00
Monday	19-May	22	12	10	0	0	0	\$9.06	\$9.00	\$0.06
Tuesday	20-May	7	6	1	0	0	1	\$4.75	\$4.50	\$0.25
Wednesday	21-May	16	2	14	0	0	0	\$2.00	\$1.50	\$0.50
Thursday	22-May	20	7	11	2	0	2	\$5.60	\$5.25	\$0.35
Friday	23-May	15	4	9	2	0	1	\$2.85	\$3.00	-\$0.15
Saturday	24-May	13	5	8	0	0	1	\$4.00	\$3.75	\$0.25
Sunday	25-May	6	4	2	0	0	0	\$2.85	\$3.00	-\$0.15
Monday	26-May	3	0	3	0	0	0	\$0.00	\$0.00	\$0.00
Tuesday	27-May	16	4	9	3	0	2	\$3.30	\$3.00	\$0.30
Wednesday	28-May	7	3	4	0	0	0	\$2.50	\$2.25	\$0.25
Thursday	29-May	15	5	10	0	0	0	\$4.05	\$3.75	\$0.30
Friday	30-May	23	12	11	0	0	0	\$8.75	\$9.00	-\$0.25
Saturday	31-May	4	2	2	0	0	2	\$1.00	\$1.50	-\$0.50
Total Weekday		342	138	170	34	0	21	\$105.72	\$103.50	\$2.22
Total (Sat)		43	14	29	0	0	3	\$10.01	\$10.50	-\$0.49
Total (Sunday)		20	6	8	6	0	0	\$4.67	\$4.50	\$0.17
Grand Total		405	158	207	40	0	24	\$120.40	\$118.50	\$1.90

FIXED ROUTE - COMBINED RIDERSHIP AND FARES

May 2025

		Total Pax	REG CASH	SENIOR & DISABLED	FREE	W/C	TAP SCANS	COLLECTED FARES	PROJECTED FARES	DIFF
Date			0.75c	Free						
Thursday	5/1	69	26	27	14	0	4	\$19.05	\$19.50	-\$0.45
Friday	5/2	51	13	25	13	0	2	\$9.95	\$9.75	\$0.20
Saturday	5/3	14	4	9	1	0	0	\$2.25	\$3.00	-\$0.75
Sunday	5/4	13	4	7	2	0	0	\$4.32	\$3.00	\$1.32
Monday	5/5	31	19	10	2	0	0	\$14.75	\$14.25	\$0.50
Tuesday	5/6	46	19	17	10	0	1	\$13.71	\$14.25	-\$0.54
Wednesday	5/7	54	13	20	16	0	7	\$10.05	\$9.75	\$0.30
Thursday	5/8	57	18	21	15	0	3	\$13.74	\$13.50	\$0.24
Friday	5/9	54	9	26	19	0	3	\$7.01	\$6.75	\$0.26
Saturday	5/10	24	4	17	3	0	0	\$2.76	\$3.00	-\$0.24
Sunday	5/11	5	0	5	0	0	0	\$0.00	\$0.00	\$0.00
Monday	5/12	41	10	16	9	0	8	\$7.15	\$7.50	-\$0.35
Tuesday	5/13	37	13	13	8	0	3	\$9.67	\$9.75	-\$0.08
Wednesday	5/14	38	4	26	7	0	2	\$3.56	\$3.00	\$0.56
Thursday	5/15	49	7	31	7	0	4	\$5.35	\$5.25	\$0.10
Friday	5/16	27	6	17	4	0	2	\$4.10	\$4.50	-\$0.40
Saturday	5/17	22	7	15	0	0	0	\$5.56	\$5.25	\$0.31
Sunday	5/18	11	0	5	5	0	1	\$0.00	\$0.00	\$0.00
Monday	5/19	41	12	20	7	0	2	\$9.06	\$9.00	\$0.06
Tuesday	5/20	25	7	15	3	0	1	\$4.75	\$5.25	-\$0.50
Wednesday	5/21	42	2	31	7	0	2	\$2.00	\$1.50	\$0.50
Thursday	5/22	45	7	32	4	0	4	\$5.60	\$5.25	\$0.35
Friday	5/23	44	4	28	10	0	3	\$2.85	\$3.00	-\$0.15
Saturday	5/24	21	8	13	0	0	1	\$6.10	\$6.00	\$0.10
Sunday	5/25	18	8	2	6	0	2	\$5.80	\$6.00	-\$0.20
Monday	5/26	27	7	14	6	0	0	\$5.42	\$5.25	\$0.17
Tuesday	5/27	37	13	15	6	0	5	\$10.43	\$9.75	\$0.68
Wednesday	5/28	28	13	7	5	0	3	\$10.25	\$9.75	\$0.50
Thursday	5/29	43	11	25	7	0	0	\$7.97	\$8.25	-\$0.28
Friday	5/30	56	18	37	1	0	0	\$13.05	\$13.50	-\$0.45
Saturday	5/31	21	7	11	3	0	2	\$4.50	\$5.25	-\$0.75
Weekday		942	251	473	180	0	59	\$189.47	\$188.25	\$1.22
Total (Sat)		102	30	65	7	0	3	\$21.17	\$22.50	-\$1.33
Total (Sunday)		47	12	19	13	0	3	\$10.12	\$9.00	\$1.12
Grand Total		1,091	293	557	200	0	65	\$220.76	\$219.75	\$1.01

FIXED ROUTE - HOURS and MILES

May 2025

	Date	Total Passengers	DAILY TOTAL HOURS			DAILY REVENUE HOURS				Pax/Rev Hr	DAILY TOTAL MILES			DAILY REVENUE MILES		
			Residenti al	Express	Gross Hours	Residenti al	Express	Revenue Hours	Residenti al		Express	Gross Miles	Residen tial	Express	Revenue Miles	
Thursday	5/1	69	12.50	11.67	24.17	11.65	10.58	22.23	3.10	140	154	294	126	144	270	
Friday	5/2	51	12.58	12.00	24.58	11.65	10.58	22.23	2.29	140	151	291	126	144	270	
Saturday	5/3	14	9.63	10.27	19.90	9.15	9.25	18.40	0.76	105	131	236	99	126	225	
Sunday	5/4	13	8.67	7.67	16.34	7.48	6.58	14.06	0.92	86	95	181	81	90	171	
Monday	5/5	31	12.08	11.50	23.58	11.65	10.58	22.23	1.39	140	155	295	126	144	270	
Tuesday	5/6	46	12.58	11.67	24.25	11.65	10.58	22.23	2.07	142	157	299	126	144	270	
Wednesday	5/7	54	12.58	11.67	24.25	11.65	10.58	22.23	2.43	138	154	292	126	144	270	
Thursday	5/8	57	12.25	11.83	24.08	11.65	10.58	22.23	2.56	134	156	290	126	144	270	
Friday	5/9	54	12.25	11.83	24.08	11.65	10.58	22.23	2.43	135	156	291	126	144	270	
Saturday	5/10	24	9.63	10.42	20.05	9.15	9.25	18.40	1.30	110	132	242	99	126	225	
Sunday	5/11	5	8.67	7.67	16.34	7.48	6.58	14.06	0.36	93	96	189	81	90	171	
Monday	5/12	41	12.58	11.67	24.25	11.65	10.58	22.23	1.84	138	158	296	126	144	270	
Tuesday	5/13	37	12.58	11.67	24.25	11.65	10.58	22.23	1.66	138	155	293	126	144	270	
Wednesday	5/14	38	12.58	11.67	24.25	11.65	10.58	22.23	1.71	139	156	295	126	144	270	
Thursday	5/15	49	12.25	11.67	23.92	11.65	10.58	22.23	2.20	139	159	298	126	144	270	
Friday	5/16	27	12.17	11.67	23.84	11.65	10.58	22.23	1.21	131	158	289	126	144	270	
Saturday	5/17	22	9.63	10.10	19.73	9.15	9.25	18.40	1.20	104	140	244	99	126	225	
Sunday	5/18	11	8.67	7.57	16.24	7.48	6.58	14.06	0.78	87	96	183	81	90	171	
Monday	5/19	41	12.58	11.67	24.25	11.65	10.58	22.23	1.84	140	149	289	126	144	270	
Tuesday	5/20	25	12.67	11.33	24.00	11.65	10.58	22.23	1.12	138	159	297	126	144	270	
Wednesday	5/21	42	12.58	12.00	24.58	11.65	10.58	22.23	1.89	138	161	299	126	144	270	
Thursday	5/22	45	12.25	11.50	23.75	11.65	10.58	22.23	2.02	140	156	296	126	144	270	
Friday	5/23	44	15.42	11.33	26.75	11.65	10.58	22.23	1.98	138	151	289	126	144	270	
Saturday	5/24	21	9.63	10.27	19.90	9.15	9.25	18.40	1.14	104	133	237	99	126	225	
Sunday	5/25	18	8.67	7.50	16.17	7.48	6.58	14.06	1.28	85	94	179	81	90	171	
Monday	5/26	27	9.25	8.08	17.33	7.48	6.58	14.06	1.92	92	102	194	81	90	171	
Tuesday	5/27	37	12.08	11.33	23.41	11.65	10.58	22.23	1.66	134	157	291	126	144	270	
Wednesday	5/28	28	12.08	11.33	23.41	11.65	10.58	22.23	1.26	139	161	300	126	144	270	
Thursday	5/29	43	12.08	12.00	24.08	11.65	10.58	22.23	1.93	134	155	289	126	144	270	
Friday	5/30	56	12.08	11.92	24.00	11.65	10.58	22.23	2.52	134	158	292	126	144	270	
Saturday	5/31	21	9.63	10.10	19.73	9.15	9.25	18.40	1.14	106	131	237	99	126	225	
Total Weekday		942	272.05	253.01	525.06	252.13	228.76	480.89	1.96	2,981	3,378	6,359	2,727	3,114	5,841	
Total (Sat)		102	48.15	51.16	99.31	45.75	46.25	92.00	1.11	529	667	1,196	495	630	1,125	
Total (Sunday)		47	34.68	30.41	65.09	29.92	26.32	56.24	0.84	351	381	732	324	360	684	
Grand Total		1,091	354.88	334.58	689.46	327.80	301.33	629.13	1.73	3,861	4,426	8,287	3,546	4,104	7,650	



**CITY OF LAWNDALE
PARKS, RECREATION, AND
SOCIAL SERVICES COMMISSION**

14717 BURIN AVENUE, LAWNDALE, CALIFORNIA 90260
PHONE (310) 973-3200 ♦ www.lawndalecity.org

DATE: June 9, 2025

TO: Honorable Chairperson and Commissioners

PREPARED BY: Jason Minter, Community Services Director

RE: Consideration of a PRSSC Booth at the 2025 Music Festival

The Parks, Recreation and Social Services Commission over the years has relied on volunteers to assist with the operation of the Fireworks Stand. And while there will not be a Fireworks Stand for this year's holiday, the Commission can begin recruiting volunteers for future stands and for the support of City programs in general.

Last year, at the Blues Festival in September, the Commission hosted a booth to advertise programs and recruit volunteers. If the Commission would like to do so for the upcoming Music Festival staff will make the arrangements. The Commission has a banner that could be hung from the booth or table, and staff can provide flyers, a sign up sheet for volunteers, and other information, as requested.

Should the Commission choose to move forward with a booth, staff would ask that Commissioners sign up for different shifts in hopes of covering a large portion of the 6 hour event. Staff can provide more concert details if necessary.

Staff recommend the Commission discuss the hosting of a booth at the upcoming Music Festival on June 28, 2025, and provide direction to staff for the event.



**CITY OF LAWDALE
PARKS, RECREATION, AND
SOCIAL SERVICES COMMISSION**

14717 BURIN AVENUE, LAWDALE, CALIFORNIA 90260
PHONE (310) 973-3200 ♦ www.lawndalecity.org

DATE: June 9, 2025

TO: Honorable Chairperson and Commissioners

PREPARED BY: Jason Minter, Community Services Director

RE: Director's Report - June 9, 2025

The following topics will be discussed during the Director's report:

- Commission Member Update
- Hopper Park Shade Cover Replacement Project - Update
- Rogers Anderson Park Closure - Irrigation Project Update
- Wood Fiber Replacement - Update
- FY2025-2026 Budget Update (ongoing):
 - Mobile Recreation Program - Approved
 - Lemonade Day - Tentative Approval
 - Approval of a Recreation Supervisor



**CITY OF LAWNDALE
PARKS, RECREATION, AND
SOCIAL SERVICES COMMISSION**

14717 BURIN AVENUE, LAWNDALE, CALIFORNIA 90260
PHONE (310) 973-3200 ♦ www.lawndalecity.org

DATE: June 9, 2025

TO: Honorable Chairperson and Commissioners

PREPARED BY: Jason Minter, Community Services Director

RE: Update on the Youth Development Center and Skatepark Project - New Commissioners

On February 3, 2025, the City Council approved the conceptual design for the Youth Development Center and Skatepark Project. Staff are preparing to release the Request for Proposals (RFP) for the continuation of the design phase, including creation of construction documents and consulting services during the construction bid process and construction phases of the project.

Given that three (3) of the commissioners were appointed after the project went through conceptual design and community input, the Commission requested an update so they could become familiar with the project. Staff will be sharing the conceptual design presentation during the meeting (Attachment A), and answering any questions the Commissioners may have.

Attachments

[Attachment A: Lawndale Youth Development Center Presentation](#)

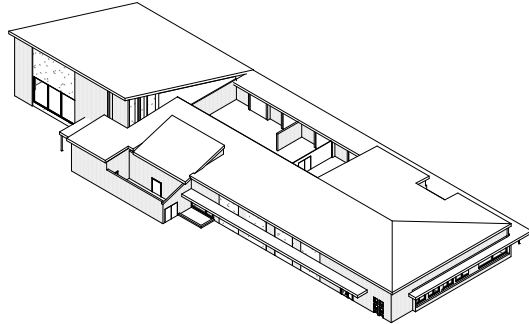
CITY OF LAWDALE

YOUTH DEVELOPMENT CENTER SCHEMATIC

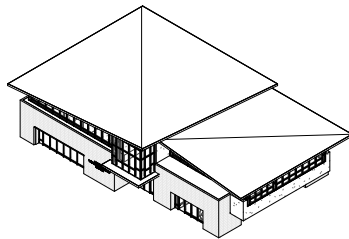
YDC, MUNICIPAL SERVICES, CABLE DEPT, SKATE PARK



PROJECT TIMELINE



EXISTING



PROPOSED

Project Kick-Off <i>Conducted Site Surveys</i>	April 3, 2024
Preliminary Design Option <i>Proceeded with Design Option for 2 Level Building</i>	May 16, 2024
Community Outreach Meetings	September, 2024
Schematic Design to Meet Desired Budget <i>Reduced Size of Building</i>	November, 2024
Present Schematic Design to City Council	February, 2025



EXTERIOR



INTERIOR

SITE AND BUILDING PROGRAM

Existing Municipal Services Program

Municipal Services	2,697	SF
Cable TV	1,024	SF
Historical Society	720	SF
Support and Circulation	3,231	SF

Total Existing Building 7,672 SF

Schematic Design Site Program

Teen Center Courtyard	2,250	SF
Skate Park	9,500	SF

Site Subtotal 11,750 SF

Schematic Design Building Program (2 Story)

First Level

Teen Center	3,609	SF
Support, Circulation	1,170	SF

First Level Subtotal 4,779 SF

Second Level

Municipal Services	1,682	SF
Cable TV Dept	1,410	SF
Support, Circulation	1,703	SF

Second Level Subtotal 4,795 SF

Total Building 9,574 SF

CONSTRUCTION COST ESTIMATE

First Level

Building Renovation	3,855	SF	\$850	\$3,276,750
Building Addition	894	SF	\$950	\$849,300

Second Level

Building Renovation	0	SF	\$850	\$0
Building Addition	4,825	SF	\$950	\$4,583,750
Circulation (Elevator,stairs)				\$200,000

Building Subtotal	9,574	SF		\$8,909,800
--------------------------	--------------	-----------	--	--------------------

Exterior Improvements

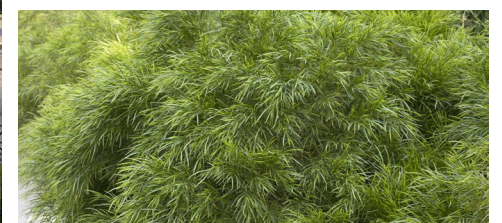
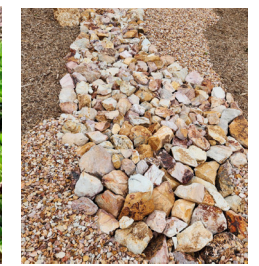
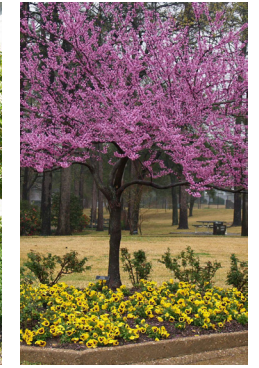
Skate park/Landscape		SF		\$924,000
Shade Structure				\$0
Teen Center Courtyard	2,500	SF		\$200,000
2 Stall Park Restroom				\$400,000

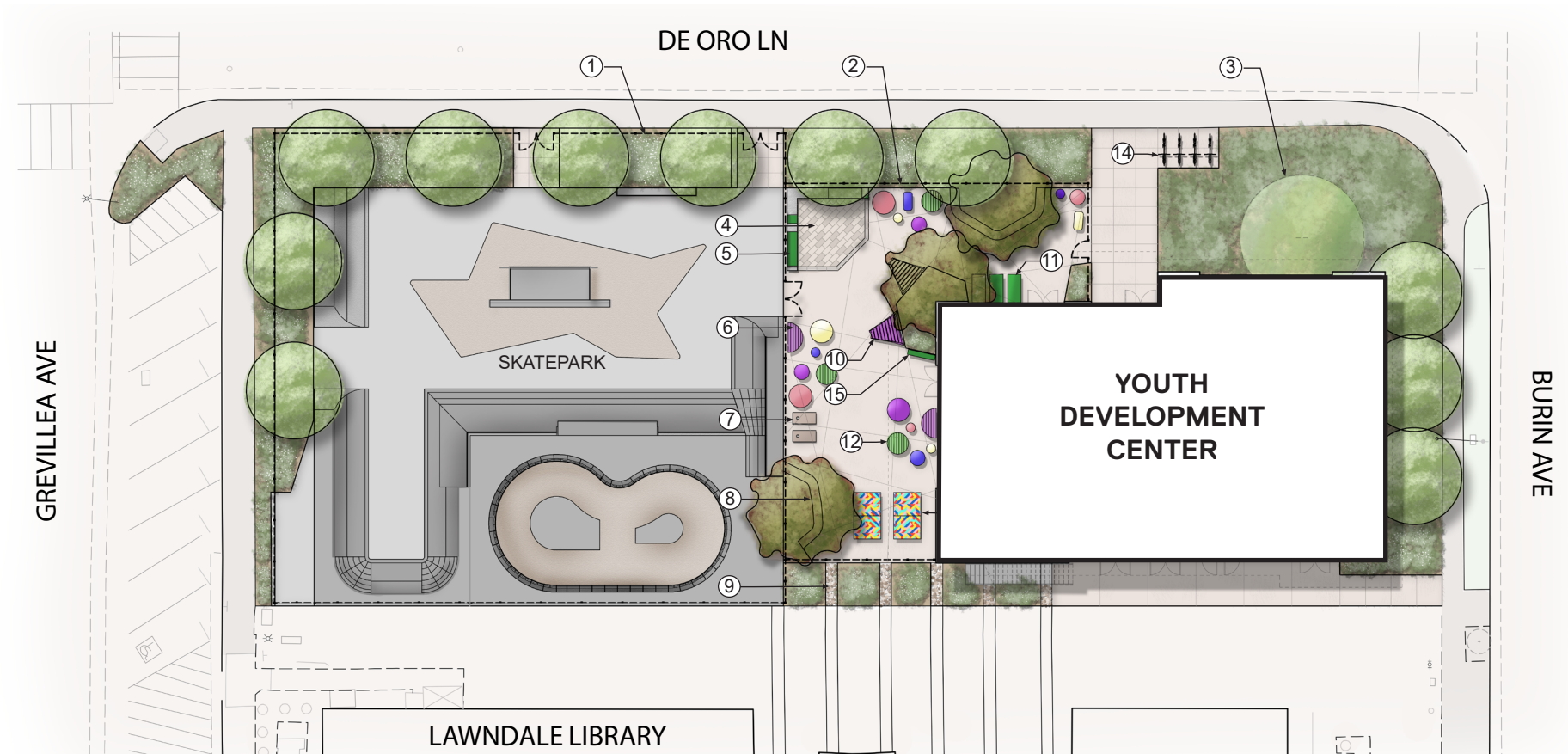
Landscape Subtotal	2,500	SF		\$1,524,000
---------------------------	--------------	-----------	--	--------------------

Subtotal				\$10,433,800
Contingency	10%			\$1,043,380
Total				\$11,477,180



CITY OF LAWDALE - YOUTH DEVELOPMENT CENTER SCHEMATIC
YDC, MUNICIPAL SERVICES, CABLE DEPT - Aerial View

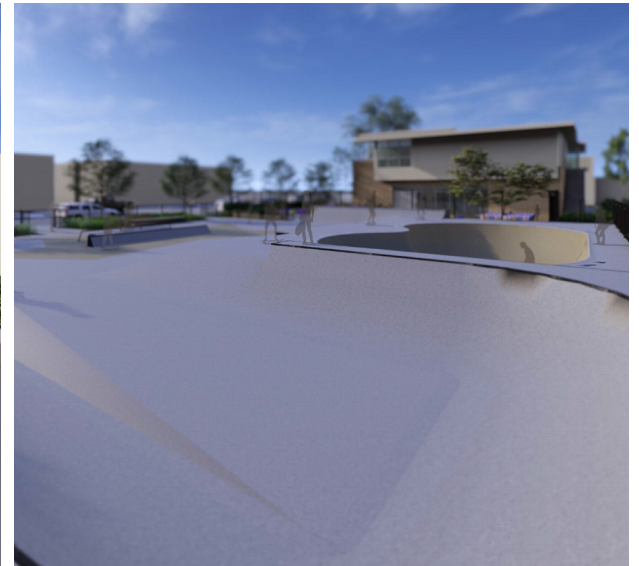
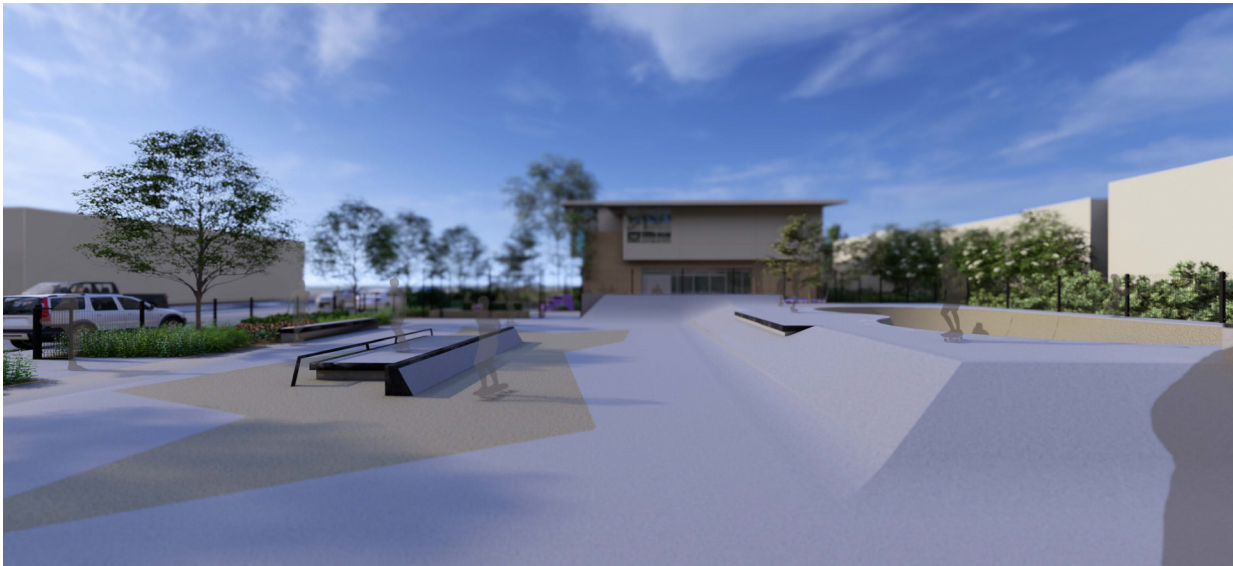
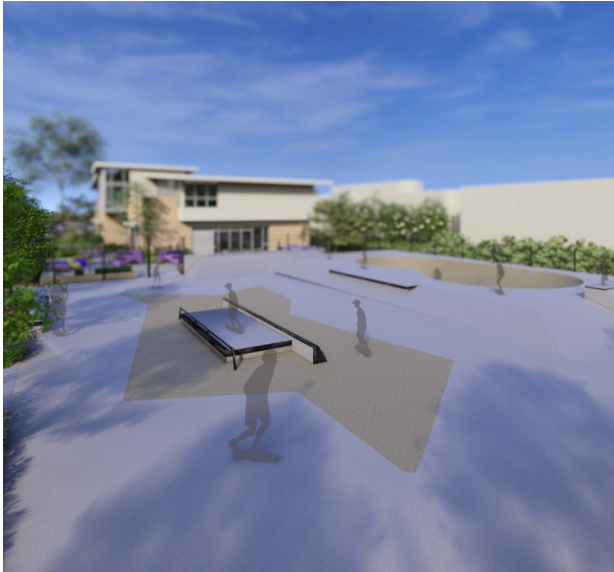




LEGEND

- | | | |
|--------------------------|--------------------|----------------------|
| ① 4' FENCE | ⑥ POUF SEATING | ⑪ CHAISE SEATING |
| ② 8' FENCE | ⑦ CORNHOLE TABLES | ⑫ METAL SLAT SEATING |
| ③ EXISTING TREE | ⑧ LOW PRECAST WALL | ⑬ PING PONG |
| ④ ENHANCED PAVERS | ⑨ ROCK COBBLE | ⑭ BIKE RACK |
| ⑤ DRAPE METAL BACK BENCH | ⑩ STOOP SEATING | ⑮ WASTE RECEPTACLES |





CITY OF LAWDALE - YOUTH DEVELOPMENT CENTER SCHEMATIC
SKATE PARK

BUILDING DESIGN GOALS



Exterior design shall be consistent with other structures in the Civic Center vicinity

Provide a sloped roof to reduce the maintenance needs and provide future solar opportunities

Provide site connection between skate park and Youth Center

Provide separate entrances for Youth Center and Municipal Services

Maintain existing corner tree

Provide natural light for upper offices

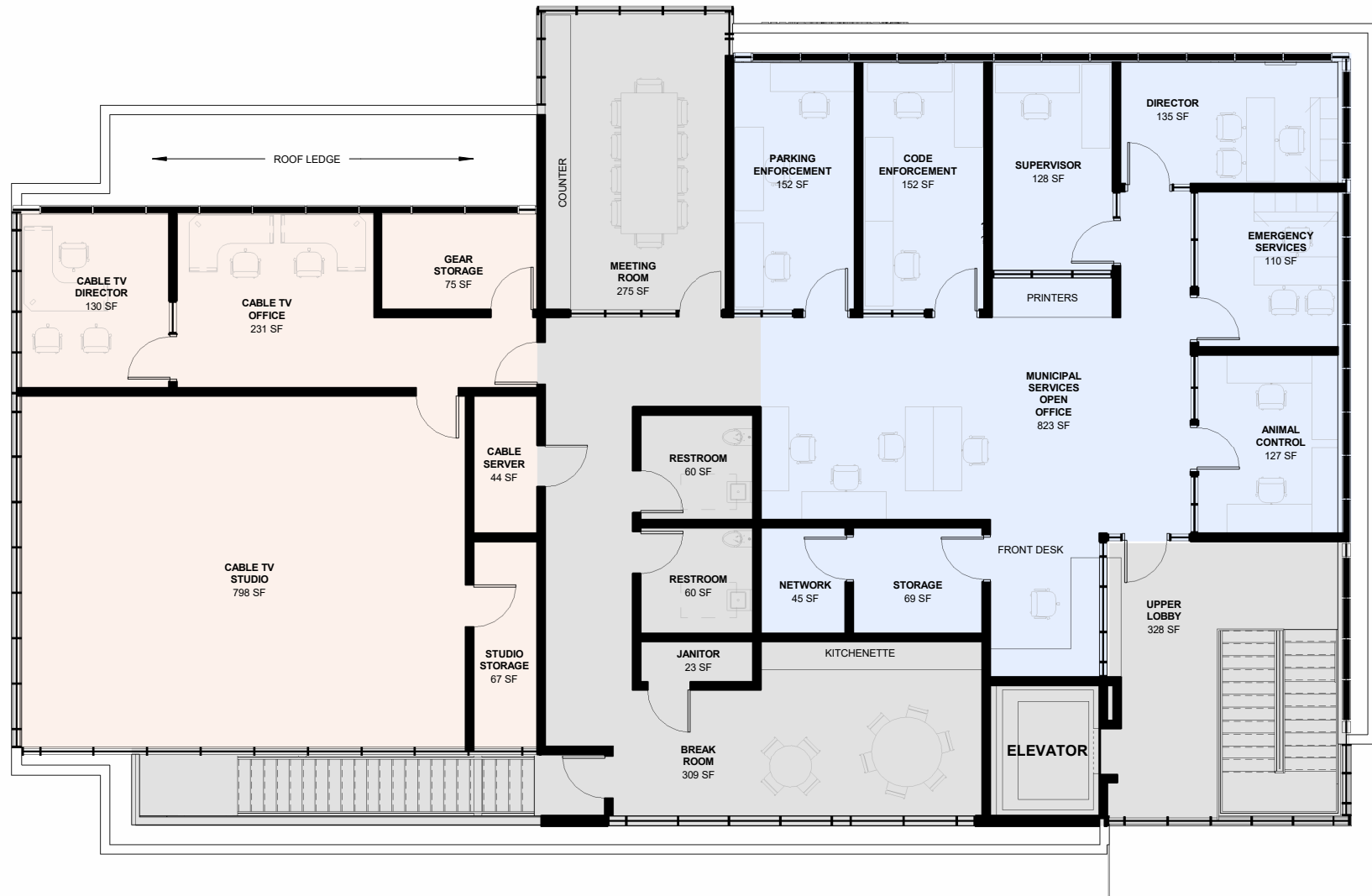
DE ORO LANE

COURTYARD



BURIN AVE.





CITY OF LAWDALE - YOUTH DEVELOPMENT CENTER SCHEMATIC YDC, MUNICIPAL SERVICES, CABLE DEPT - Floor Plan, Level 2



CITY OF LAWNDALE - YOUTH DEVELOPMENT CENTER SCHEMATIC
YDC, MUNICIPAL SERVICES, CABLE DEPT - VIEW FROM DE ORO



CITY OF LAWDALE - YOUTH DEVELOPMENT CENTER SCHEMATIC
YDC, MUNICIPAL SERVICES, CABLE DEPT - VIEW FROM COURTYARD



COURTYARD RECREATION



OUTSIDE ENTRY



LOBBY





Goals:
 Create an inviting, “living room” atmosphere
 Areas for games and activities, movies, homework and creating community





CAFE AND MOVIE AREA



GAME ZONE





DEVELOPMENT AND RESOURCE CENTER

Goal:
 A room for seminars, job fairs, self and career development
 Provide rooms for private counseling





CITY OF LAWNDALE - YOUTH DEVELOPMENT CENTER SCHEMATIC
YDC, MUNICIPAL SERVICES, CABLE DEPT - ENTRANCE TO MUNICIPAL SERVICES



MUNICIPAL SERVICES PUBLIC COUNTER

