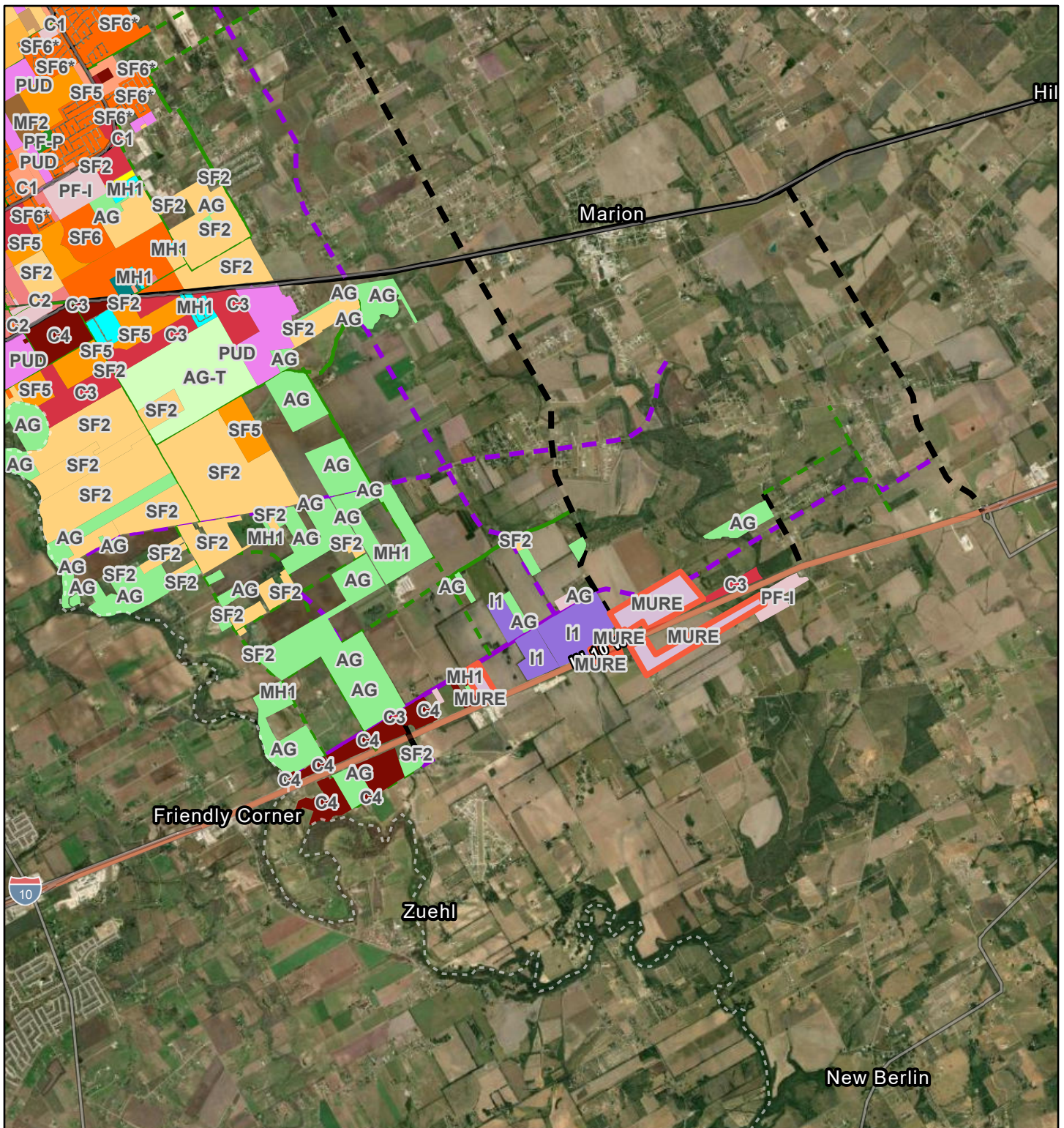


# MURE to I-1 Zoning Map

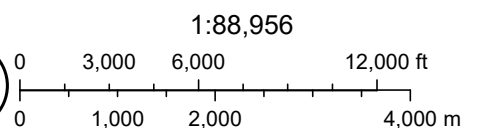


6/13/2025, 3:00:35 PM

City of Cibola - Zoning

- |   |   |
|---|---|
| Agricultural (AG)                               | Multi-Family Residential (MF2)                      |
| Temp. Agricultural (UDC 4.4.9)                  | Manufactured Home Residential (MH1)                 |
| Neighborhood Commercial (C1)                    | Mobile Home Residential (MH2)                       |
| Community Retail/Service (C2)                   | Mixed Use Regional Employment Center (MURE)         |
| Retail / Office (C3)                            | Planned Unit Development (PUD)                      |
| Retail/Office - Restrictive Alcohol Sales (C3R) | Low Density Single-Family Residential (SF2)         |
| General Commercial (C4)                         | Medium Density Residential (SF4)                    |
| Light Industrial (I1)                           | Medium-High Density Single-Family Residential (SF5) |
| Multi-Family Residential (MF1)                  | High Density Single-Family Residential (SF6)        |
|   | Public Facility (PF) - Institution                  |

- |                                     |
|-------------------------------------|
| Public Facility (PF) - Park         |
| Other                               |
| Thoroughfares - Future and Existing |
| Collector, Planned                  |
| Collector, Existing                 |
| Minor Arterial, Planned             |
| Minor Arterial, Existing            |
| Major Arterial, Planned             |
| Major Arterial, Existing            |
| Freeway, Existing                   |



Earthstar Geographics, Sources: Esri, TomTom, Garmin, FAO, NOAA, USGS, © OpenStreetMap contributors, and the GIS User Community