



Eye Spy

The Ultimate Vision Quiz

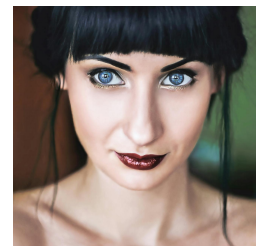
1. Which of these color pigments is NOT actually present in the human eye?

- Brown
- Green
- Blue
- All of the above



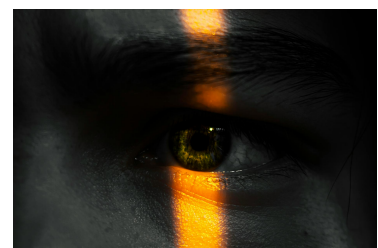
2. What causes the blue appearance of some eyes?

- A special blue pigment
- The reflection of the sky
- The scattering of light in the iris
- Melanin concentration



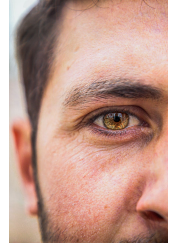
3. Which cells in your eyes are responsible for low-light vision?

- Cone cells
- Rod cells
- Pupil cells
- Cornea cells



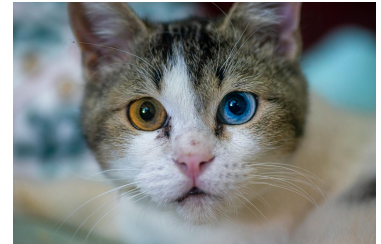
4. True or False: Eye color is determined by a single gene.

- True
- False



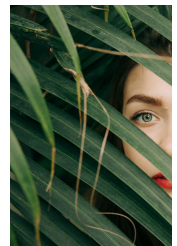
5. Which eye condition is characterized by having two different colored eyes?

- Heterochromia
- Albinism
- Aniridia
- Glaucoma



6. Can eye color change over time?

- Yes, but only during infancy
- Yes, it can change through adolescence and even into adulthood
- No, eye color is fixed from birth
- Only with certain medical conditions



7. What might a limbal ring (dark ring around the iris) indicate about a person?

- Their emotional state
- Their cultural background
- Their age and health
- Their personality type



8. Are people with lighter eyes more sensitive to light than those with darker eyes?

- Yes
- No



9. Which stage of sleep is most associated with dreaming?

- Light sleep
- Deep sleep
- REM sleep
- All of the above



10. True or False: You can hallucinate during REM sleep.

- True
- False

