

# SPLIT ROCK

JUMPING TOUR

2021 PROVISIONAL PRIZE LIST

Fort Worth  
International CSI4\*-W

DECEMBER 14-19

WILL ROGERS  
MEMORIAL CENTER



LONGINES



LUGANO<sup>®</sup>  
DIAMONDS



USEF 6\*

## Foreword By the FEI President



On behalf of the Fédération Equestre Internationale, it is my pleasure to welcome you to the Fort Worth (USA) for another leg of the highly anticipated Longines FEI Jumping World Cup™ North American League 2021/2022. Over the next few days, we will have some of the world's finest sport horses and athletes showcase their talent as they chase precious FEI World Cup™ points, aiming for the Final in Leipzig (GER) 6-10 April 2022.

The USA, Canada and Mexico will once again be setting the scene of the North American League with currently eight suspense-filled qualifiers of which four count towards the overall standings. Our North American journey began in Vancouver (CAN), and soon we will be heading out to Puebla (MEX) and Ocala (USA), only to name a few; at each leg, we are guaranteed to experience top-level sport as athletes and horses brave courses of highest standards, set up by some of the best course designers in the world.

We have all become accustomed to change over the past year with the Covid-19 pandemic and found solutions and ways of adapting to this new situation in order to resume competitions as best as possible. It is thanks to the collective efforts of organising committees such as the one here in Fort Worth (USA), as well as all the experts that have contributed to the FEI Calendar Task Forces and our Return to Play resources, and tools such as the FEI Policy for Enhanced Competition Safety during the Covid-19 pandemic, that our athletes are able to compete safely.

Sixteen leagues, including the North American League, make up the highly successful and global FEI World Cup™ Jumping series which has been in existence since 1978. The format of the FEI World Cup™ series guarantees edge of your seat competitions whilst displaying the fantastic bond between horses and people; the trust, the communication, the hard work and the patience required. It is this bond which enables impressive feats of athleticism to be achieved and the core around which the whole FEI community revolves.

I want to thank the Organisers and sponsors along with all those who have dedicated their time, commitment and support to the successful running of the event allowing people around the world to engage first-hand with FEI Jumping. To the athletes and their entourage, I wish you a fantastic event and the best of luck!



Ingmar De Vos  
FEI President





*Proud Presenting Sponsor of the  
\$215,000 Longines FEI Jumping World Cup Fort Worth  
and the \$40,000 Lugano Diamonds 1.45 FEI Speed*

LUGANO®  
DIAMONDS

*An experience as remarkable as our collection*

NEWPORT BEACH | ASPEN | PALM BEACH | OCALA | 561.388.7776 | 866.584.2666 | LUGANODIAMONDS.COM

© LUGANO DIAMONDS

LONGINES

FEI  
JUMPING  
WORLD CUP™  
FORT WORTH

2021/2022 | NORTH AMERICAN LEAGUE

TIME TO BEAT

VANCOUVER (CANADA) 26TH SEP

SACRAMENTO (USA) 9TH OCT

WASHINGTON, IN TRYON (USA) 30TH OCT

LEXINGTON (USA) 6TH NOV

~~TORONTO (CANADA) 13TH NOV~~

LAS VEGAS (USA) 20TH NOV

FORT WORTH (USA) 18TH DEC

PUEBLA (MEXICO) 26TH FEB

OCALA (USA) 6TH MAR

FINAL EVENT  
LEIPZIG (GERMANY) 10TH APR



FEI.TV

FEI.ORG



LONGINES

FEI  
JUMPING  
WORLD CUP™



TIME TO BEAT



FEI™ SHAPING THE FUTURE  
TOGETHER SINCE 1921

FEI.TV

FEI.ORG



Dear Friends,

I am thrilled to have you join us for another year of the Split Rock Jumping Tour.

The sport of show jumping has been rapidly evolving over the past several years and our mission is to change the way competitors, sponsors, and spectators experience a horse show in the United States. Looking back through our first six years, we have seen some of the world's top riders support our innovative concept by returning show after show.

We are continuously striving to find new ways to make the entire show experience the absolute best it can be. I personally promise that I will continue to learn from not only the continual evolution of our sport but from your much needed feedback as we establish SRJT as one of the premier horse show management teams in America.

I want to personally thank you for being a part of this new show jumping movement and I look forward to seeing you at the 2021 Split Rock Jumping Tour!

Sincerely,

A handwritten signature in black ink, appearing to read "Derek Braun".

Derek Braun  
Founder & President



# CONTENTS

Horse Show Officials .....	3
Show Approvals .....	4
Competitor Details and Requirements .....	5
Show Schedule .....	7
Class Sepcifications .....	8
Special Classes .....	9
FEI Class Sepcifications .....	10
Zone 7 Specifications .....	11
VIP Order Form .....	11
Facility Map .....	12
Park & Entry Information .....	13
Feed Form .....	14
Stabling .....	15
Credit Card Form .....	15
Stabling Request Form .....	16
Waiver .....	17
Entry Blank .....	18
Split Rock Nation .....	19
Rules and Regulations .....	20
FEI Rules and Regulations .....	23

# HORSE SHOW OFFICIALS

## PRESIDENT

**Derek Braun**

## SHOW MANAGER

**Derek Braun  
Mike Belisle**

## EVENT COORDINATOR

**Stephanie Rowney**

## SHOW SECRETARY

**Kaitlin Farmer**

## OFFICE MANAGER

**Robin Cravens**

## SPONSORSHIP COORDINATOR

**Samantha McDermott**

## STABLING MANAGER

**Patrick Hill**

## ANNOUNCERS, COMMENTATORS, HOSTS

**John Kyle  
Steve Serafin**

## FEI VETERINARY DELEGATE

**Dr. Ron Gaeta**

## FEI TREATING VETERINARIAN

**Kyle Heite**

## SCOREBOARD & TIMING PROVIDER

**Longines Timing**

## JUMP PROVIDER

**Dalman Jump Co.**

## EMT

**Daniel Cearley**

## HORSE AMBULANCE HEART

## FARRIER

**Travis Day**

## PHOTOGRAPHER

**Winslow Photography**

## GROUND JURY & JUDGES

### PRESIDENT

**Leslie Brown**

### MEMBER

**Kelley Douglas**

### MEMBER

**Elena Couttenye**

### FOREIGN JUDGE

**Malu Arrambide**

## FEI STEWARDS

### FEI CHIEF STEWARD

**Dan Reed**

### FEI ASSISTANT STEWARD

**Julie Karpan**

### FEI ASSISTANT STEWARD

**Travis Page**

### FEI ASSISTANT STEWARD

**Donna Rocchetti**

### FEI ASSISTANT STEWARD

**Amelia Gomez Su**

## USEF STEWARD

**Candy Fraley**

## COURSE DESIGNER

**Anderson Lima**





# SHOW APPROVALS

United States Equestrian Federation (USEF)

Federation Equestre Internationale (FEI)

North American League (NAL)

Washington International Horse Show (WIHS)

Texas Hunter Jumper Association (THJA)



## STALL RESERVATIONS AND ENTRY QUESTIONS

Stalls and Entries may be done:

Online

Mailed in to Split Rock Jumping Tour

Emailed to Kaitlin

**Email:** [kaitlin@splitrockjumpingtour.com](mailto:kaitlin@splitrockjumpingtour.com)

**Online Entries:** [entries.equestrian.digital](http://entries.equestrian.digital)

**Website:** [splitrockjumpingtour.com](http://splitrockjumpingtour.com)

**Address:** 5425 Greenwich Pike  
Lexington, KY 40511

## HORSE SHOW OFFICE DURING THE SHOW

Split Rock Show Office

Will Rogers Coliseum

3401 W Lancaster Ave

Fort Worth TX 76107



# COMPETITOR DETAILS & REQUIREMENTS

Each competition must be conducted in accordance with the FEI rules and applicable USEF rules. Entry into the competition represents acknowledgement and acceptance, with no appeal, to these competition rules for all classes.

## ENTRIES

A separate entry form (online, print, email) must be filled out for each horse. Each entry must be signed by the owner, rider, trainer, and coach (if applicable) and said signatures shall constitute verification that the information contained thereon is accurate to the best of the signer's knowledge and belief.

Deposit must be paid with each entry, and an open check or credit card must be on file in the show office before back numbers will be issued.

Entries and Stalls will be limited. Competitors are encouraged to get their entries in early. Entries received after stalls have sold out will be placed on a waitlist in order of received entries. Late entries (received after the closing date) will be charged a \$50 late entry fee. Under extreme circumstances, management reserves the right to accept or deny any entry.

Any entry scratched after the closing date is responsible for stabling fees and a \$50 show scratch fee. There is no fee for horse substitutions. Under certain circumstances and/

or veterinary verification letter, SRJT Management reserves the right to enforce or waive fees. All horses must pay an office fee of \$75. This office fee also permits each horse to properly add/scratch regular classes. There are no same day adds, but classes may be scratched in the office prior to the start of the class. Scratching at the in-gate does not scratch the class and the class fee will still be charged. If a horse is shown in a class it was not properly entered in, it will be charged a \$25 Ride Did Not Enter (RDNE) fee in addition to the class fee. Entries can be done by 3pm through the app or in the office until 4pm.

## NIGHTWATCH

All horses occupying a stall will be required to pay a flat night watch fee of \$15. No exceptions. Please provide contact name and cell phone number on the stall.

All horses are required to pay a Paramedic Fee of \$20 and a Horse Ambulance fee of \$15. No exceptions.

## NON-SHOWING

All horses on the grounds must have a completed entry in the office, complete with signatures. Non-show horses will be charged a \$125 non-showing fee in addition to any stall or trainer splits. Scratched horses present on the grounds are considered non-showing.

## MOVE IN/OUT

Move In for the Fort Worth International will be Monday,

December 13, no earlier than 3pm. Move out is Monday, December 20, by noon. Horses cannot be accommodated earlier or later due to facility restrictions and other events around the Fort Worth International.

## CHECKOUT

You must close out your account no later than Sunday, December 19. If you wish for the office to close your account, we will be happy to do so. Please leave clear instructions as to whose check or credit card to use for each horse. Starting Sunday morning, checking out through the app will be available. Please look over your statement and report any errors to a secretary immediately as to horse's name, riders, owners, addresses, association numbers, etc. Please double check that the Payee for prize money is correct with the correct address.

## PRIZE MONEY

Prize money is NOT applied to the invoice at the show. All prize money is mailed within thirty (30) days of the conclusion of the show to the owner listed on the entry form, or the Payee if given. Prize money will only be mailed if the owner's or payee's W-9 Form is on file with the show office, and all balances are paid. Foreign competitors must include a U.S. Tax ID Number on their entry form or will be asked to complete a W-8BEN or W-8 Certificate of Foreign Status Form.



## ORDER OF GO

All classes will have set orders of go. Orders of Go are produced in accordance with JP 112. Orders of Go are available in the Show Office, at the ring, and on the App.

## SALUTE

Upon entrance into the arena for each class, all riders must salute the Class Sponsor (if applicable).

## PRIZE CEREMONY

All riders and horses receiving ribbons 1st-8th place are Required to be present and participate in all prize ceremonies. This applies to National Jumper and FEI classes. Grooms for the top three(3) placing horses of each class will accompany the competitor/horse onto the field to be present to hold the horse during the rider podium portion of the ceremony. Please note: for the safety of all horses, competitors, and spectators, plan for an alternate mount if your placing horse is unsuitable to participate in ceremonies and victory gallops.

## LEASH LAW

Dogs must be on a leash and under control at all times. Dog owners who fail to comply with the USEF rules regarding dogs may be subject to penalty, including \$100 fine per incident, and/or warning cards issued. Dog owners are solely responsible for any damages, claims, losses, or actions resulting from their dog's behavior.

## MOTORIZED VEHICLES

Golf carts must stay off horse path. Minors who do not have a valid driver's license which allows them to operate a motorized vehicle in the state in which they reside will not be permitted to operate a motorized vehicle of any kind, including, but not limited to, golf carts, motorcycles, scooters, or farm utility vehicles, on the competition grounds of licensed competitions. Minors who have a valid temporary license may operate the above described motorized vehicles as long as they are accompanied by an adult with a valid driver's license. The parent/legal guardian or individual who signs the entry blank as a parent or guardian of a minor operating a motorized vehicle in violation of this rule are solely responsible for any damages, claims, losses or actions resulting from that operation. Violations of this rule will be cause for penalties against those responsible for the child committing the offense. Wheelchairs and other mobility assistance devices for individuals with disabilities are exempt from this rule.

The unsafe use of personal electronic transport devices, as determined by the competition officials and management in their sole discretion, that do not require a driver's license to operate, including but not limited to segways, hover boards, and single wheeled scooters is prohibited on competition grounds. Operating such devices in areas where people gather may be deemed "unsafe use" if there is a risk of harm to others. If the operator of the device is a minor, the parent/legal guardian or individual who signs the entry blank as a parent or guardian of a minor operating the device in violation of this rule is accountable and may be subject to penalties. Wheelchairs and other mobility assistance devices for individuals with disabilities are exempt from this rule.

## LIABILITY

Under Texas law, a farm animal activity sponsor, farm animal professional, or other person does not have the duty to eliminate all risks of injury of participation in farm animal activities. Split Rock Jumping Tour, its owner, employees, agents and sponsors shall not be liable or responsible for loss or damage to any animal, person, or property which occurs for any reason during the show. Each exhibitor holds the SRJT Show Management, its owners, agents, employees, as well as the USEF blameless for any accident or loss which may occur.



## COLISEUM

## Tuesday, December 14

100. Hyaluronex FEI Jog - 4:00pm

## Wednesday, December 15

5. eHorses 1.0m II.2.d  
8. 1.10m II.2.d  
13. \$500 1.20m II.2.bd  
17. \$500 ESI Footing 1.30m II.2.d  
20. \$1000 1.40m II.2.d  
25. \$37,000 1.45m FEI  
Power/Speed - 6:00pm

## Thursday, December 16

9. Frank Kent 1.10m II.1  
14. \$500 1.20m II.1  
18. \$500 ESI Footing 1.30m II.1  
21. \$2500 1.40m II.1  
27. \$75,000 Restylane 1.50m FEI  
Welcome Qualifier 238.2.2 -7:30pm

## Friday, December 17

31. Closets by Design 1.0m Ch/Ad II.2.d  
34. \$2000 1.10m Ch/Ad II.2.d  
37. \$2000 1.20m Jr/Am II.2.d  
40. \$2000 1.30m Jr/Am II.2.d  
43. \$2000 Horseflight 1.40m Jr/Am II.2.d  
22. \$20,000 1.40m Winning Round II.2.e

## Saturday, December 18

35. \$5000 WIHS/NAL 1.10m Ch/Ad Final II.2.b  
38. \$5000 NAL 1.20m Jr/Am Final II.2.b  
41. \$5000 1.30m Jr/Am Final II.2.b  
44. \$5000 Horseflight 1.40m Jr/Am Final II.2.b  
28. \$215,000 Longines FEI  
Jumping World Cup Fort Worth  
presented by Lugano Diamonds - 7:30pm

## Sunday, December 19

32. Closets by Design 1.0m Ch/Ad Final II.2.b  
11. \$2500 1.15m Mini Prix II.2.a  
16. \$5000 1.25m Mini Prix II.2.a  
26. \$40,000 Lugano Diamonds 1.45m FEI  
Speed 238.2.1 - 1:00pm  
23. \$20,000 Restylane 1.35m National Prix II.2.a



# CLASS SPECIFICATIONS

## NATIONAL JUMPER DIVISIONS

Class	Fence Height	Class #s	Class Fee	Prize \$
<b>Non-Nominated</b>				
eHorses 1.0m	1.0m	5	\$70	-
1.10m	1.10m	8,9	\$70	-
Closets by Design Low Child/Adult	1.0m	31,32	\$70	-
<b>Nominated Jumper Section</b>				
<i>All classes 1.10m and higher with prize money will have a nomination fee.</i>				
1.15m Mini Prix	1.15m	11	\$200	\$2,500
1.20m	1.20m	13,14	\$75	\$500
1.25m Mini Prix	1.25m	16	\$300	\$5,000
ESI Footing 1.30m	1.30m	17,18	\$75	\$500
Restylane 1.35m National Prix	1.35m	23	\$600	\$20,000
1.40m	1.40m	20	\$80	\$1,000
1.40m	1.40m	21	\$200	\$2,500
1.40m Winning Round	1.40m	22	\$600	\$20,000
High Child/Adult	1.10m	34	\$160	\$2,000
Low Junior/Amateur	1.20m	37	\$160	\$2,000
Medium Junior/Amateur	1.30m	40	\$160	\$2,000
Horseflight High Junior/Amateur	1.40m	43	\$160	\$2,000



# SPECIAL CLASSES

Class	Day	Entry Fee
<b>32. Low Child/Adult Final</b> Non-Nominated. 1.0m. Horse/rider combination must have entered a Child/Adult jumper class, and may only compete in one Final.	Sunday	\$70
<b>35. \$5,000 NAL/WIHS High Child/Adult Final</b> Nominated. 1.10m. Horse/Rider combination must have entered a Child/Adult jumper class OR class 11, and may only compete in one Final.	Saturday	\$300
<b>38. \$5,000 NAL Low Junior/Amateur Final</b> <b>41. \$5,000 Medium Junior/Amateur Final</b> <b>44. \$5,000 Horseflight High Junior/Amateur Final</b> Nominated. 1.20m, 1.30m, 1.40m respectively. Horse/Rider combination must have entered a Junior/Amateur class OR any Sunday Prix, and may only compete in one Final.	Saturday Saturday Saturday	\$300 \$300 \$300
<b>11. \$2,500 1.15m Mini Prix</b> 1.15m. Open to Nominated Jumpers.	Sunday	\$200
<b>16. \$5,000 1.25m Mini Prix</b> 1.25m. Open to Nominated Jumpers.	Sunday	\$300
<b>22. \$20,000 1.40m Winning Round</b> 1.40m. II.2.e. Open to Nominated Jumpers. Top 10 return for jump off.	Friday	\$600
<b>23. \$20,000 Restylane 1.35m National Prix</b> 1.35m. Open to Nominated Jumpers.	Sunday	\$600
<b>25. \$37,000 1.45m FEI Power/Speed</b> <b>26. \$40,000 Lugano Diamonds 1.45m FEI Speed</b> <b>27. \$75,000 Restylane 1.50m FEI Welcome</b> <b>28. \$215,000 Longines FEI Jumping World Cup Fort Worth</b> Presented by Lugano Diamonds	Wednesday Sunday Thursday Saturday	

See Following Pages for Specs.



# FEI CLASS SPECIFICATIONS

## FEI HORSE PACKAGE

Includes:

**Class #25** - \$37,000 1.45m FEI Power/Speed

Article 274.2.5

Three (3) horses per athlete allowed

**Class #26** - \$40,000 Lugano Diamonds 1.45m FEI Speed

Article 238.2.1

Three (3) horses per athlete allowed

**Class #27** - \$75,000 Restylane 1.50m FEI Welcome Qualifier

Article 238.2.2

Two (2) horses per athlete allowed

**Class #28** - \$215,000 Longines FEI Jumping World Cup Fort Worth  
presented by Lugano Diamonds

Article 238.2.2

One (1) horse per athlete

40 athletes may qualify

Riders must qualify for class #28 in class #27. If the rider has more than 1 horse entered in class #27, they must declare the Qualifying Horse in the office no later than Wednesday at 4pm. This horse will compete first and determine the rider's qualification for class #28. This does NOT have to be the horse ridden in class #28.

Horses must complete the initial round on an FEI class to compete in class #28.

### One (1) FEI Stall

Nomination Fee, Office Fee, Paramedic Fee, Ambulance Fee, Nightwatch Fee, IHP Fee, and Drug Fee.

### Optional Add-Ons

FEI Tack Stall

Hospitality Packages

Feed/Bedding

Horse 1 - \$3,500   Horse 2 - \$2,500   Horse 3 - \$1,340

### No Show/Late Withdrawal Fee - \$400

Horses stabling in FEI, even if competing Nationally or non-showing, must have an FEI registration and passport. Requests for horses to stable in FEI if not competing in FEI may be declined due to space or at the discretion of the Ground Jury or Organizing Committee. If not showing in National Classes, horses will be charged the additional non-showing fees on top of the FEI stall.

See the FEI definite schedule for more information regarding FEI classes. The FEI definite schedule supersedes any information in the Prize List.

Please visit [ryegate.com/uset.php](http://ryegate.com/uset.php) Upcoming Classes to determine which classes will be included in the Rolex Computer Ranking List.

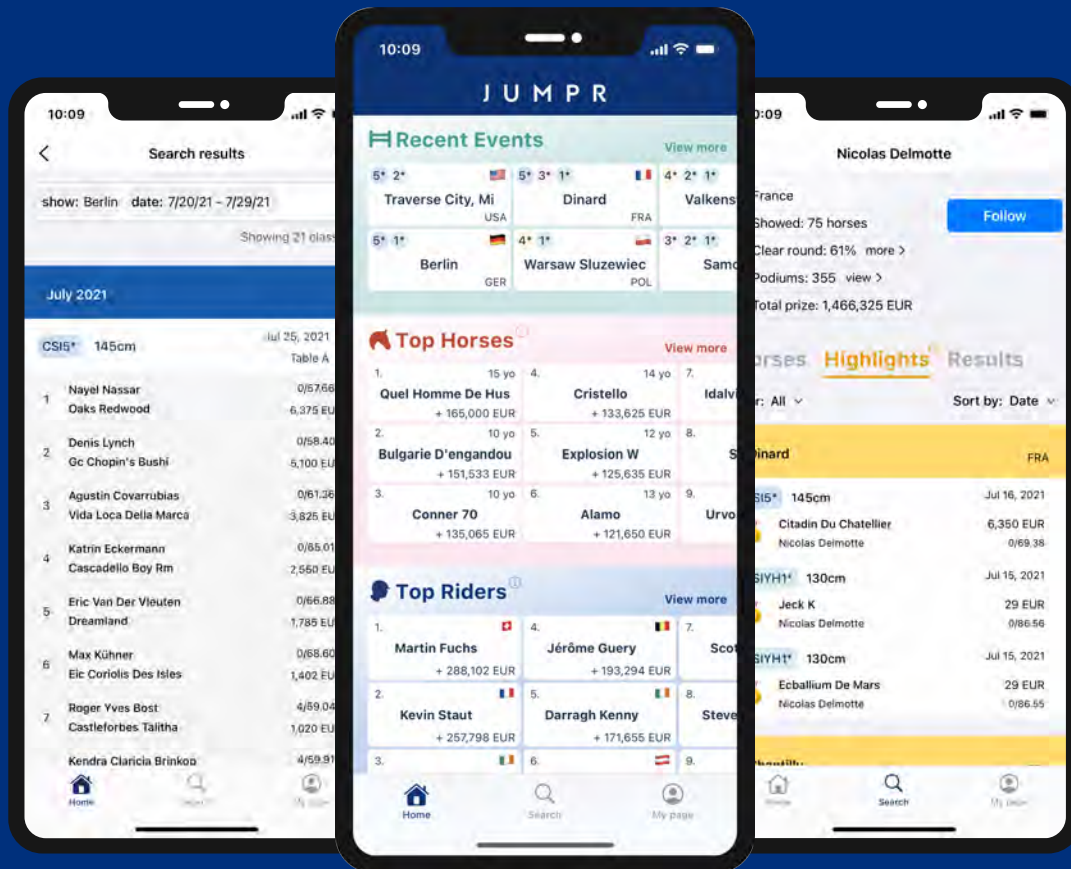






## Show Jumping Results & Statistics

Analytical Insight For The Modern Sport



Download **JUMPR** for iOS Now  
Visit **JumprApp.co** for More Details



# ZONE 7 SPECIFICATIONS



## RIDER:

Child/Adult Riders may not jump over 1.30m and remain Eligible for the Low or High Child/Adult Jumper Classic.

The same Horse/Rider combination cannot compete at 1.20m or higher.

## TEXAS HUNTER JUMPER ASSOCIATION

The Fort Worth International CSI4\* – W is operated in accordance with the current rules of the Texas Hunter and Jumper Association by which they are recognized and rated in the Open Jumpers.

### THJA MEMBERSHIP STATEMENT

THJA MEMBERS SHALL BE ELIGIBLE TO PARTICIPATE IN ALL CLASSES AT COMPETITIONS RECOGNIZED BY THJA. A PERSON/HORSE MAY REGISTER WITH THE THJA AT A RECOGNIZED HORSE SHOW AS LONG AS THE APPLICATION(S) AND PAYMENT ACCOMPANIES THE OFFICIAL HORSE SHOW RESULTS. REGISTRATIONS MAY ALSO BE COMPLETED ONLINE WITH A CREDIT CARD AT THE THJA WEBSITE BEFORE THE END OF THE SHOW. ALL RIDERS AND TRAINERS, IN ADDITION TO OWNERS OF THJA REGISTERED HORSES MUST BE MEMBERS OF THJA FOR THE POINTS TO COUNT.



### Enjoy the best seat in the coliseum!

Reserve a table to enjoy breakfast, lunch, and the bar. Limited to 1 table per barn.

**6 Seats \$6,000** \_\_\_\_\_

Trainer Name: \_\_\_\_\_

Stable/Farm Name: \_\_\_\_\_

Email: \_\_\_\_\_

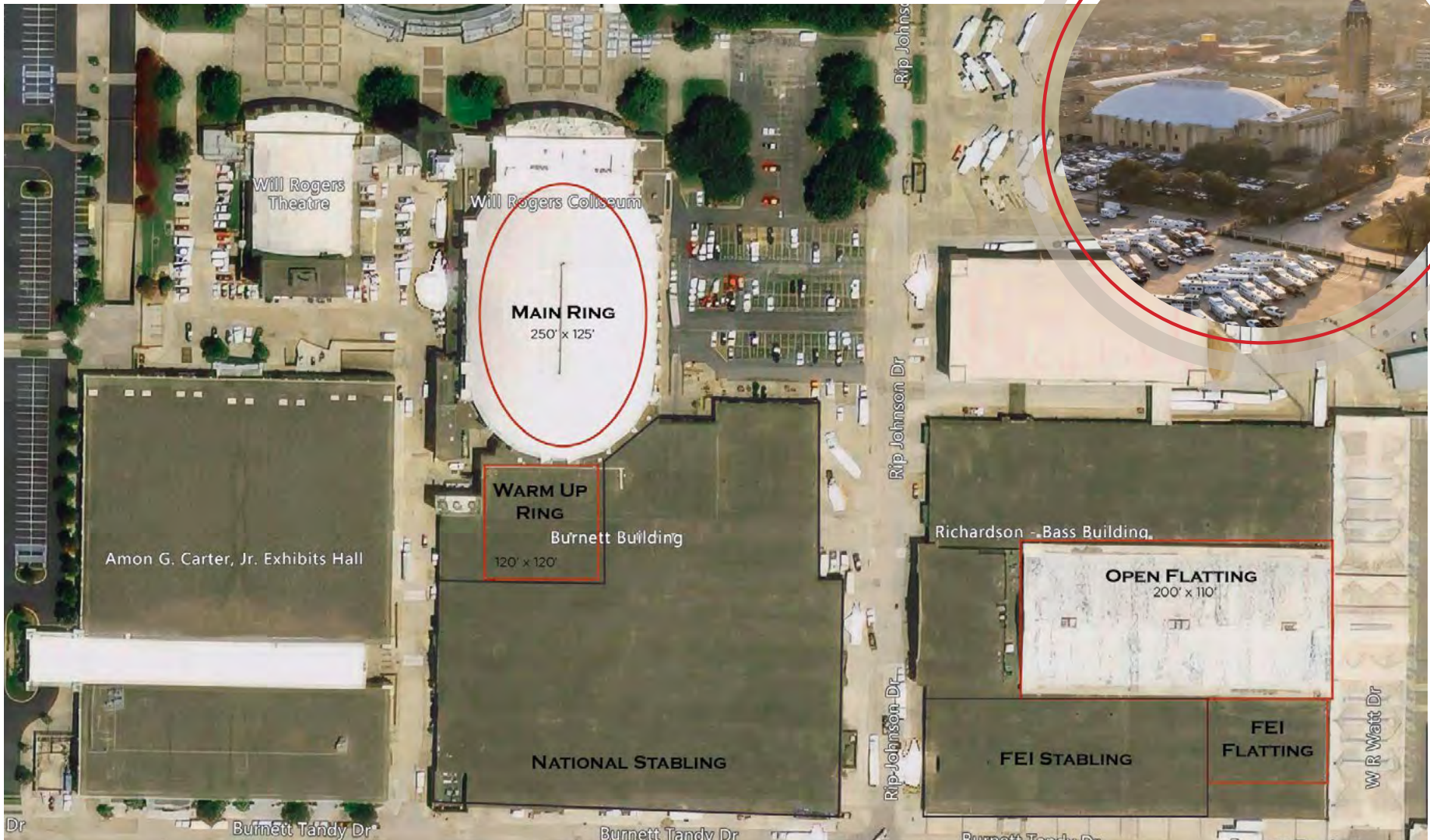
Cell Phone: \_\_\_\_\_

Please Mail to Split Rock Jumping Tour,  
5425 Greenwich Pike, Lexington, KY 40511  
or Email Kaitlin at [kaitlin@splitrockjumpingtour.com](mailto:kaitlin@splitrockjumpingtour.com)





# FACILITY MAP



## NEAREST HOSPITAL Texas Health Fort Worth

2.6 miles  
1301 Pennsylvania Ave  
Fort Worth, TX 76104

## NEAREST LEVEL 1 TRAUMA CENTER John Peter Smith Hospital

3.8 miles  
1500 S Main St  
Fort Worth, TX 76104

Footing is Sand/Fiber Mix



# PARK & ENTRY INFORMATION

## **CLOSING DATE FOR ENTRIES**

November 22, 2021

## **ONLINE ENTRIES:**

[entries.equestrian.digital](https://entries.equestrian.digital)

## **EMAIL ENTRIES:**

[kaitlin@splitrockjumpingtour.com](mailto:kaitlin@splitrockjumpingtour.com)

## **MAIL ENTRIES:**

Split Rock Jumping Tour, 5425 Greenwich Pike, Lexington, KY 40511

.....

Daily Courses will be posted on the App

## **FEED AND BEDDING**

Feed can be ordered ahead of the show by contacting Kaitlin, or submitting the Feed form. For any special grain requests, please give at least a week to see if that is available in the area. Once at the show, feed can be ordered through the App or at the Show Office. All feed orders should be placed before 3pm. Bedding must be ordered through the facility. The shavings office is located by Barn 4.

## **RV PARKING**

RVs are taken on a first come, first served basis and advanced reservations are not taken. Upon arrival, call 817-991-8497 to be shown your location and have power turned on. Full service (50 or 30amp, water, sewage) is \$60/night. Partial service (30amp and water) is \$30/night.

## **VETERINARY & HEALTH REQUIREMENTS**

Horses must be vaccinated in accordance with USEF rules, and have a negative Coggins dated within 1 year.

## **PARKING**

Parking passes must be purchased at the entrance gates. Trailer parking is \$5/day. Single day exhibitor parking is \$10/day, and multi-day passes can be purchased at a discount of \$5/day.

## **STABLING**

Stabling for FEI horses is located in the Richardson-Bass Building. National horses are stabled in the Burnett building. Semi-permanent stalls. Move in is Monday, December 13, no earlier than 3pm. Move out is Monday, December 20, by noon. Due to facility restrictions and other events at the facility, early arrival and late departure cannot be accommodated.

# FEED FORM

Trainer Name \_\_\_\_\_ Date \_\_\_\_\_

*If billed to a particular horse:*

Horse and Owner Name \_\_\_\_\_

Barn \_\_\_\_\_ Stall # \_\_\_\_\_

Hay ..... \_\_\_\_\_

ProElite Performance ..... \_\_\_\_\_

ProElite Senior ..... \_\_\_\_\_

SafeChoice Perform ..... \_\_\_\_\_

Equine Senior ..... \_\_\_\_\_

Equine Senior - Active ..... \_\_\_\_\_

Ultium ..... \_\_\_\_\_

Whole Oats ..... \_\_\_\_\_

Special grain requests may be sent to Kaitlin at [kaitlin@splitrockjumpingtour.com](mailto:kaitlin@splitrockjumpingtour.com) up to 5 days prior to arrival to see if they can be accommodated.



# STABLING

There are three methods to reserve stalls.

Fill out the horse entry blanks, and create an “entry” for a barn account. These can be mailed or emailed in to Kaitlin. Entries will only be accepted if accompanied by checks or credit cards for entry deposits, and an open check or card for the trainer account.

When doing online entries at [entries.equestrian.digital](http://entries.equestrian.digital), there are two options. You can create a trainer account here to reserve tack stalls, or enter horses. The online system will automatically run all horse deposits on the credit card(s) entered. A credit card is required for trainer account reservations, but it will not be run.

A third option is the following Stable Request Form. This can be mailed or emailed in to Kaitlin. An open check or card must accompany the form. You must still send in horse entry blanks separately, before the close of entries, but they can be at a later date. You can fill in slots (Horse 1, Slot 2, etc) or simply put the total number of stalls, horse stalls or tack stalls. Care should be taken that the same stall is not reserved multiple times, and stall counts will be confirmed prior to the closing date of entries. This form is binding after the closing date of entries, and stalls will be charged accordingly unless adjustments are made prior to November 22, 2021.

Stalls are non-refundable after the closing date of entries (November 22, 2021). Horses may be substituted until the Monday of the show at no additional charge.

## CREDIT CARD FORM

**CREDIT CARD TRANSACTIONS WILL BE PROCESSED AT RETAIL PRICES, WHICH ARE 3% HIGHER THAN THE PRICES IN THIS PRIZE LIST. FOR A RETAIL PRICE PRIZE LIST CONTACT SRJT.**



HORSE(S) \_\_\_\_\_

\_\_\_\_\_

TRAINER \_\_\_\_\_

\_\_\_\_\_

NAME ON CARD \_\_\_\_\_ BILLING ZIP \_\_\_\_\_

CARD NUMBER \_\_\_\_\_ EXP \_\_\_\_ / \_\_\_\_ SECURITY \_\_\_\_\_

SIGNATURE \_\_\_\_\_ DATE \_\_\_\_\_



# STABLING REQUEST

## Stall reservations must be complete by November 22, 2021

In order to reserve a block of stalls, please fill out the below form and mail or email it in to Kaitlin. An open check or credit card must accompany the form. You must still send in horse entry blanks separately, before the closing date of entries. Slots can be filled in with horses' show names, generic (Horse 1, slot 2, etc) or totals (8 horses, 3 tack). This form is binding after the closing date of entries, and you will be charged accordingly unless adjustments are made before November 22, 2021.

Stalls are non-refundable after the closing date of entries (November 22, 2021).

### Mail to:

Kaitlin Farmer  
Split Rock Jumping Tour  
5425 Greenwich Pike  
Lexington, KY 40511

### Email to:

Kaitlin Farmer  
[kaitlin@splitrockjumpingtour.com](mailto:kaitlin@splitrockjumpingtour.com)  
Cell: 337.852.5620

Horses may arrive starting 3pm  
December 13. Horses must depart  
by noon December 20.

Trainer's Name: \_\_\_\_\_

Cell Phone Number: \_\_\_\_\_

Stable/Farm Name: \_\_\_\_\_

Email: \_\_\_\_\_

Stable Near: \_\_\_\_\_

Name of Horse	National Stall	FEI Stall
Tack Stalls		
Total		

If additional horses/slots are needed please attach additional forms.

Total Stalls: \_\_\_\_\_

Office Use Only



## WAIVER AND RELEASE OF LIABILITY, ASSUMPTION OF RISK AND INDEMNITY AGREEMENT

For and in consideration of United States Equestrian Federation, Inc. dba US Equestrian ("USEF") allowing me, the undersigned, to participate in any capacity (including as a rider, driver, handler, vaulter, longeur, lessee, owner, agent, coach, official, trainer or volunteer) in a USEF sanctioned, licensed or approved event or activity, including but not limited to equestrian clinics, practices, shows, competitions and related or incidental activities and ("USEF Event" or "USEF Events"); I, for myself, and on behalf of my spouse, children, heirs and next of kin, and any legal and personal representatives, executors, administrators, successors,, and assigns, hereby agree to and make the following contractual representations pursuant to this Agreement (the "**Agreement**"):

A. RULES AND REGULATIONS: I hereby agree that I have read, understand, and agree to be bound by all applicable Federation Bylaws, rules, and policies including the USEF Safe Sport Policy and Minor Athlete Abuse Prevention Policies (MAAPP) as published at [www.usef.org](http://www.usef.org), as amended from time to time.

B. ACKNOWLEDGMENT OF RISK: I knowingly, willingly, and voluntarily acknowledge the inherent risks associated with the sport of equestrian and know that horseback riding and related equestrian activities are inherently dangerous, and that participation in any USEF Event involves risks and dangers including, without limitation, the potential for serious bodily injury (including broken bones, head or neck injuries), sickness and disease (including communicable diseases), trauma, pain & suffering, permanent disability, paralysis and death; loss of or damage to personal property (including my mount & equipment) arising out of the unpredictable behavior of horses; exposure to extreme conditions and circumstances; accidents involving other participants, event staff, volunteers or spectators; contact or collision with other participants and horses, natural or manmade objects; adverse weather conditions; facilities issues and premises conditions; failure of protective equipment (including helmets); inadequate safety measures; participants of varying skill levels; situations beyond the immediate control of the USEF Event organizers and competition management; and other undefined, not readily foreseeable and presently unknown risks and dangers ("**Risks**").

### EQUINE ACTIVITY LIABILITY ACT WARNING:

CAUTION: HORSEBACK RIDING AND EQUINE ACTIVITIES CAN BE DANGEROUS. RIDE AT YOUR OWN RISK.

**Under the laws of most States, an equine activity sponsor or equine professional is not liable for any injury to, or the death of, a participant in equine activities resulting from the inherent risks of equine activities.**

C. ASSUMPTION OF RISK: I understand that the aforementioned Risks may be caused in whole or in part or result directly or indirectly from the negligence of my own actions or inactions, the actions or inactions of others participating in the USEF Events, or the negligent acts or omissions of the Released Parties defined below, and I hereby voluntarily and knowingly assume all such Risks and responsibility for any damages, liabilities, losses, or expenses that I incur as a result of my participation in any USEF Events. I also agree to be responsible for any injury or damage caused by me, my horse, my employees or contractors under my direction and control at any USEF Event.

D. WAIVER AND RELEASE OF LIABILITY, HOLD HARMLESS AND INDEMNITY: In conjunction with my participation in any USEF Event, I hereby release, waive and covenant not to sue, and further agree to indemnify, defend and hold harmless the following parties: USEF, USEF Recognized Affiliate Associations, the United States Olympic & Paralympic Committee (USOPC), USEF clubs, members, Event participants (including athletes/riders, coaches, trainers, judges/officials, and other personnel), the Event owner, licensee, and competition managers; the promoters, sponsors, or advertisers of any USEF Event; any charity or other beneficiary which may benefit from the USEF Event; the owners, managers, or lessors of any facilities or premises where a USEF Event may be held; and all directors, officers, employees, agents, contractors, and volunteers of any of the aforementioned parties (**Individually and Collectively, the "Released Parties" or "Event Organizers"**), with respect to any liability, claim(s), demand(s), cause(s) of action, damage(s), loss, or expense (including court costs and reasonable attorney fees) of any kind or nature ("**Liability**") which may arise out of, result from, or relate in any way to my participation in the USEF Events, including claims for Liability caused in whole or in part by the negligent acts or omissions of the Released Parties.

E. COMPLETE AGREEMENT AND SEVERABILITY CLAUSE: This Agreement represents the complete understanding between the parties regarding these issues and no oral representations, statements or inducements have been made apart from this Agreement. If any provision of this Agreement is held to be unlawful, void, or for any reason unenforceable, then that provision shall be deemed severable from this Agreement and shall not affect the validity and enforceability of any remaining provisions.

**I HAVE CAREFULLY READ THIS DOCUMENT IN ITS ENTIRETY, UNDERSTAND ALL OF ITS TERMS AND CONDITIONS, AND KNOW IT CONTAINS AN ASSUMPTION OF RISK, RELEASE AND WAIVER FROM LIABILITY, AS WELL AS A HOLD HARMLESS AND INDEMNIFICATION OBLIGATIONS.**

By signing below, I (as the participant or as the Parent/Legal Guardian of the minor identified below) hereby accept and agree to the terms and conditions of this Agreement in connection with my (or the minor's) participation in any USEF Event. If, despite this Agreement, I, or anyone on my behalf or the minor's behalf, makes a claim for Liability against any of the Released Parties, I will indemnify, defend and hold harmless each of the Released Parties from any such Liabilities as the result of such claim.

**The parties agree that this agreement may be electronically signed. The parties agree that the electronic signatures appearing on this agreement are the same as handwritten signatures for the purposes of validity, enforceability, and admissibility.**

☐ RIDER/DRIVER/HANDLER/VAULTER/LONGEUR ☐ OWNER ☐ TRAINER ☐ OFFICIAL ☐ STAFF ☐ VOLUNTEER ☐ COACH (IF APPLICABLE)

Signature: \_\_\_\_\_ Date: \_\_\_\_\_

Print Name: \_\_\_\_\_

Parent/Guardian Signature: (Required if Rider/Driver/Handler/Vaulter/Longeur is a minor) \_\_\_\_\_ Date: \_\_\_\_\_

Print Parent//Guardian Name: \_\_\_\_\_ Emergency Contact Phone No. \_\_\_\_\_

6.17.20

# FORT WORTH INTERNATIONAL CSI4\* - W

## 2021 ENTRY BLANK

### Emergency Contact

Name: \_\_\_\_\_

Phone Number: \_\_\_\_\_

Relation: \_\_\_\_\_

Horse Name _____ USEF/USHJA _____ FEI _____ Breed _____ Gender _____ Height _____ Color _____ Year Foaled _____			<b>Entries Due November 22, 2021</b>		
<input type="checkbox"/> FEI	Rider 1 Classes	Stable With	<b>PAYEE</b> Name _____ Address _____ City/St/Zip _____ Tax ID _____		
<input type="checkbox"/> Non-Show	Rider 2 Classes	Arrival Date			
<b>OWNER</b> Name _____ USEF/USHJA _____ FEI _____ Email _____ Address _____ City/St/Zip _____ Phone _____ Tax ID: _____ Signature _____ Signature _____		<b>TRAINER</b> Name _____ USEF/USHJA _____ FEI _____ Email _____ Address _____ City/St/Zip _____ Phone _____ Signature _____ Signature _____		<b>National Stalls</b> QTY: _____ x \$300 = _____ <b>FEI Stalls</b> QTY: _____ x \$400 = _____  All fees are per horse and are included in the FEI All-Inclusive Package price. National entries must pay each fee in addition to the class entry fee. <b>A \$450 Deposit is required per entry.</b>	
<b>RIDER 1</b> Name _____ USEF/USHJA _____ FEI _____ DOB _____ Nat. _____ Address _____ City/St/Zip _____ Phone _____ Email _____ Signature _____ Signature _____		<b>RIDER 2</b> Name _____ USEF/USHJA _____ FEI _____ DOB _____ Nat. _____ Address _____ City/St/Zip _____ Phone _____ Email _____ Signature _____ Signature _____			
<b>FEDERATION ENTRY AGREEMENT:</b> By entering a Federation-licensed Competition and signing this entry blank as the Owner, Lessee, Trainer, Manager, Agent, Coach, Driver, Rider, Handler, Vaultor or Longeur and on behalf of myself and my principals, representatives, employees and agents, I agree that I am subject to the Bylaws and Rules of The United States Equestrian Federation, Inc. (the "Federation") and the local rules of _____ (Competition). I agree to be bound by the Bylaws and Rules of the Federation and of the competition. I will accept as final the decision of the Hearing Committee on any question arising under the Rules, and agree to release and hold harmless the competition, the Federation, their officials, directors and employees for any action taken under the Rules. I represent that I am eligible to enter and/or participate under the Rules, and every horse I am entering is eligible as entered. I also agree that as a condition of and in consideration of acceptance of entry, the Federation and/or the Competition may use or assign photographs, videos, audios, cable - casts, broadcasts, internet, film, new media or other likenesses of me and my horse taken during the course of the competition for the promotion, coverage or benefit of the competition, sport, or the Federation. Those likenesses shall not be used to advertise a product and they may not be used in such a way as to jeopardize amateur status. I hereby expressly and irrevocably waive and release any rights in connection with such use, including any claim to compensation, invasion of privacy, right of publicity, or to misappropriation. The construction and application of Federation rules are governed by the laws of the State of New York, and any action instituted against the Federation must be filed in New York State. See GR908.4.			<b>Office Use Only</b>		

**Office Fee:** \$75  
**USEF Fee** (Includes horse fee + D/M) QTY: \_\_\_\_\_ x \$23 = \_\_\_\_\_  
**USHJA Fee** QTY: \_\_\_\_\_ x \$7 = \_\_\_\_\_  
**USEF IHP** QTY: \_\_\_\_\_ x \$35 = \_\_\_\_\_  
**FEI Drug Fee** QTY: \_\_\_\_\_ x \$33 = \_\_\_\_\_  
**USEF Show Pass** QTY: \_\_\_\_\_ x \$45 = \_\_\_\_\_  
**USHJA Show Pass** QTY: \_\_\_\_\_ x \$30 = \_\_\_\_\_  
**LATE FEE**  
 (if received after Nov. 22, 2021) \$50 = \_\_\_\_\_  
**TOTAL** (including fees, stabling and feed): \$ \_\_\_\_\_



# SPLIT ROCK NATION

Benefits are Tour Wide! Join now and enjoy at all stops along the tour in 2021.

## Individual

- 5% off all class fees
- 25% off Merchandise
- 10% off VIP\*
- Priority VIP seating\*
- Unlock Sponsorship deals and discounts
- Expanded PR in social media
- On-site concierge
- Priority RV location\*\*
- 5 Private Photography Photos from the Show

Cost - \$1,000

## Barn

- 5% off all class fees
- 25% off Merchandise
- 10% off VIP\*
- Priority VIP seating\*
- Unlock Sponsorship deals and discounts
- Expanded PR in social media
- On-site concierge
- Priority RV location\*\*
- Priority stabling location
- 10 Private Photography photos from the Show

Cost - \$2,500 (10 or fewer Riders)  
\$5,000 (More than 10 Riders)

Trainer Name: \_\_\_\_\_

Stable/Farm Name: \_\_\_\_\_

Name (if Individual): \_\_\_\_\_

Ordering: \_\_\_\_\_

Please Mail to Split Rock Jumping Tour  
5425 Greenwich Pike, Lexington, KY 40511  
or Email Kaitlin at

[kaitlin@splitrockjumpingtour.com](mailto:kaitlin@splitrockjumpingtour.com)

\*If Purchased

\*\*Location Dependent



# RULES & REGULATIONS

## ORGANIZING COMMITTEE DECISIONS

It is important to understand that interpretations of existing rules and regulations and the invoking of additional rules and regulations to cover unforeseen circumstances are the sole responsibility and authority with, and with the approval of the Ground Jury and that all owner, trainer, chiefs, competitors, and grooms agree to the acceptance of these interpretations and additional rulings by virtue of your participation. Horse Show Management reserves the right to limit entries, refuse, accept conditionally, or to cancel any entries, disqualify any riders or exhibitors, prohibit exhibition of entries, and cancel award prizes, without claim for damages; to cancel any course, to add a dotted line, to cancel or combine any classes, or to reschedule classes, after due notice to exhibitors; to change rings or judges; to change specifications in jumper classes in order to facilitate the the time schedule or as competition warrants, or make any changes management deems is in the best interest of the show and its exhibitors.

## USEF MEMBERSHIP STATEMENT

Life, senior active and junior active members shall be eligible to participate in all classes at Regular Competitions, Eventing Competitions at the Modified Level or above and Combined Driving Competitions at the Advanced Level, Dressage, Reining and Vaulting Competitions and Endurance Rides.

A non-member may participate as a handler, rider, driver, owner, lessee, agent, coach or trainer at Regular Competitions, Eventing Competitions, Dressage Competitions, Reining Competitions and Combined Driving Competitions upon payment of a \$45 Show Pass fee. Participants in the following classes are exempted from the Requirements of this rule:

1) leadline; 2) exhibitions; 3) games and races; 4) classes for 4-H members; 5) walk trot (exception: Friesian performance FR218) and academy classes (academy classes are classes limited to horses used regularly in a lesson program); 6) USDF introductory level tests, pas de deux and quadrille classes; 7) NRHA Endorsed Reining Competitions. 8) Opportunity classes, 9) citizens of other nations who have proof, in English, of current membership in good standing of their own National Federation, 10) USEA beginner novice division; and 11) assistant handlers in Dressage Sport Horse Breeding classes.

## USEF

Every class offered herein, which is covered by the rules and specifications of the current United States Equestrian rule book will be conducted and judged in accordance therewith. Reminder: All USEF Life and Senior Active members, as well as participants who have regular contact with minor athletes, are required to comply with the U.S. Center for SafeSport training requirement to be eligible to participate in the competition. All participants must adhere to the U.S. Center for SafeSport Code, USEF Safe Sport Policy,

and the Minor Athlete Abuse Prevention Policies. More information about these can be found at [www.usef.org](http://www.usef.org).

Each horse will be charged a USEF fee of \$23 per competition (\$15 Drugs and Medication, \$8 USEF) and \$7 fee for USHJA. Anyone who is not a member of USEF and/or USHJA will be charged a \$45 show pass fee by USEF and a \$30 Show Pass Fee by USHJA. Owners, riders, and trainers must be Active Competing members of the USEF and USHJA, join at the show, or pay the listed Show Pass Fees. Farms, Partnerships (etc.) owning a horse competing in USEF licensed competition must be Recorded with USEF, and one recorded owner of the entity must have a current USHJA competing membership. Foreign owners, riders, and trainers must provide a copy in English that they are a member in good standing of their national federation. Riders showing in classes restricted to Junior, Amateur, or Adults must present their membership card or other documentation indicating their Junior or Amateur status. Foreign Amateurs must join USEF and sign for Amateur status. Members of EC must sign for Amateur status but are not required to join USEF. The Exhibitor has the ultimate responsibility for proper registration of horse, owner, rider, and trainer with USEF/USHJA and for entering the horse under proper ownership where points are concerned. All horses competing in any USEF Computer Ranked Grand Prix are subject to the USEF International High-Performance fee in accordance with GR207 at \$35.

Horse must be recorded with USEF annually or in Life in order to be eligible for HOTY Awards and/or Zone Awards. All horses competing in the USEF licensed Hunter/Jumper/Eq competitions must have a Registration number from USHJA. All horses are required to have a microchip recorded with USEF/USHJA.

## FARRIER

No farrier other than the official show farrier will be permitted on the grounds unless pre-approved by the SRJT show management.

## COMBINING, DIVIDING, OR CANCELLING DIVISIONS

The Decision to Combine, Cancel or Divide classes will be made at the discretion of the Show Management. The update will be reflected on the App and on the How Many schedule.

**Combining** - Once a class/classic/division has been combined due to insufficient entries, it will not be re-divided for additional entries the day of the class.

**Dividing** - A class/classic/division that has been offered as split may be combined on the day of if scratched entries warrant. Management has the right to run all sections of the class/classic/division in their entirety before pinning if insufficient entries seem likely.

**Cancelling** - A class/classic/division that has been cancelled due to insufficient entries will not be reinstated for additional entries on the day of the class.

Every horse entered for competition will be under the control of the Horse Show Management, but Management will, in no case, be responsible for any loss or damage that may occur, and it shall be a condition of entry that each exhibitor shall hold the Horse

Show, its members, directors, and employees, contractors, sponsoring entities and facility harmless for any loss or accident to horse, horses or equipment which may occur from sickness, fire or otherwise.

## ANIMAL WELFARE

Manual poling or the use of bamboo off-sets is prohibited while on the property. Violators will be subject to penalty with the automatic elimination of the horse involved from the class it is competing in and/or the succeeding class in which it was entered and will forfeit all entry fees for that class. Riders/trainers who, in the opinion of the Judges or Committee, use a whip or spurs in a cruel or excessive manner will be immediately eliminated from the current and/or succeeding class in which that horse/rider is entered and will forfeit all entry fees for that class. All incidents may be reported by the USEF steward and to the USEF for possible further investigation.

## FORMAL ATTIRE

Formal attire is required in all jumper classes. This includes all National and FEI classes. ALL COMPETITORS ARE REQUIRED TO WEAR FORMAL ATTIRE DURING ALL JUMPING COMPETITION CLASSES. White breeches only. J P111.9 - Formal Attire. Dark, muted or similar colored or red (scarlet) are required; white or fawn breeches; a white tie, choker or hunting stock, and a white or lightly colored shirt must be worn. Shirts must have a white collar and white cuffs.

## PROTECTIVE HEADGEAR

It is compulsory for all persons at Federation licensed hunter/jumper competitions when mounted anywhere on

the competition grounds to wear properly fastened protective headgear which meets or exceeds ASTM (American Society for Testing and Materials)/SEI (Safety Equipment Institute) standards for equestrian use and carries the SEI tag. It must be properly fitted with harness secured. It is the responsibility of the rider, or the parents, guardian or trainer of the junior exhibitor to see to it that the headgear worn complies with appropriate safety standards and is properly fitted and in good condition.

## ACCIDENTS INVOLVING COMPETITORS

GR1317. In the event of a head injury due to a fall/accident at a licensed competition, the competitor may be prohibited from further competition until released by medical personnel. In some cases, the competitor may not return to competition without a signed release from a licensed medical professional. The competitor may be placed on suspension by USEF until a release is provided. Competitors are advised to familiarize themselves with this rule.

## MARTINGALE

1.30m or below - no martingale restriction when used in a conventional manner. Classes above 1.30m and all young horse classes may only have running martingales used in a conventional manner. Irish martingales permitted in all classes. Draw reins and German martingales only allowed when schooling or classes 1.20m and below with no prize money, and are not permitted in age restricted classes. Ponies may not be ridden by a junior in draw reins or German martingale at any time.

## STALLS

FEI stalls are permanent, fiberglass type, 10 x 10 with rubber mats. National will have fiberglass, 10x10 stabling on concrete.

## SHARPS

Anyone found discarding sharps in any other manner than the provided sharps containers will be fined up to \$250 per instance and held responsible for any fines or expenses incurred by management.

## ENTRIES

Last date for substitutions is Monday before the show. Exhibitors are responsible for the fees of all horses entered by them or their agents.

Failure to check out will incur a \$50 late check out fee. All statements become final at the close of business on Sunday. Disputes will not be allowed after this time. Management has permission to close out any outstanding balances with payment information provided. Trainers will be held financially responsible for any clients who do not submit viable payment in a timely manner, including late fees.

Trainers may split miscellaneous items to their clients. Splits will be accepted until noon on the Friday of the show week. Splits will revert back to the trainer for payment if uncollected.

The prices in this catalogue reflect a Discount for paying by Cash, Check or other means not involving a credit card. A Retail Price catalogue is available upon request.

All foreign competitor balances must be paid in cash, check drawn on a US bank, or credit card using US funds. Checks returned by the bank and credit card chargebacks will sustain a 10% or \$50 penalty, whichever is greater. If not sufficiently paid in 10 days, accounts will be turned over to the USEF.

A new W-9 form is required for each calendar year. As per FEI regulations, Split Rock Jumping Tour is required to issue all tax forms to the owner, regardless as to whom the prize money is paid. Foreign competitors must provide a US Tax ID Number, W-9 or their applicable W-8BEN/ W-8BEN-E.

## SCHOOLING AND WARM UP

The designated schooling arena for the competition will be restricted to only horses warming up to compete in said classes. Horses wishing to school at times other than their designated competition warm up time must use the arena(s) posted for open flatting/ schooling. SRJT management reserves the right to change schooling locations and times to best suit competition arenas due to conditions/weather/schedule.

## TIES

All ties in jumper competition will be broken on the basis of time in accordance with the FEI and USEF rules. Hunter and Equitation ties will be kept or left in accordance with the applicable USEF, USHJA or Zone rules.

## FEI FEES FOR HORSES & RIDERS

As approved at the 2006 General Assembly, an annual FEI registration is now mandatory for all riders and horses competing in FEI events. The fee requirement took effect January 1, 2006 and must be renewed annually. All horses and riders must be registered with the FEI before competing in any 2019 FEI competition.

## FEI HORSE PASSPORTS

Every horse entered for any competition at CSNs or CSI\*/\*\* in a foreign country, all horses entered for other CSI\*\*/\*\*\*\*/\*\*\*\*\* CSIOs, Championships, Regional, and

Olympic Games whether at home or in foreign countries must have an official, valid, FEI passport, or a National passport approved by the FEI accompanied by a FEI Recognition Card, as a means of identification and to establish ownership.





# FEI RULES AND REGULATIONS

## ALL SECTIONS WILL ADHERE TO FEI RULES & REGULATIONS

**1.** The Fort Worth International will be conducted in accordance with: FEI Statutes (23rd Edition, effective November 7, 2013); FEI General Regulations (23rd Edition, effective January 1, 2014); FEI Veterinary Regulations (13th Edition, effective January 1, 2014); FEI Rules for Jumping Events and its Annexes (24th Edition, effective January 1, 2014); FEI Anti-Doping Rules for Human Athletes (3rd Edition, effective January 1, 2014); and all subsequent revisions to the above Rules and Regulations which will take precedence. An arbitration procedure is provided for the FEI statutes and General Regulations as referred above. In accordance with this procedure, any appeal against a decision rendered by the FEI or its official bodies must be settled exclusively by the Court of Arbitration for Sport (CAS) in Lausanne, Switzerland.

**2.** Horses which lose a shoe prior to starting in the initial round of a one round competition with a jump-off will be given a later starting position. In a jump-off, a horse that loses a shoe prior to starting will be given a new starting place three positions later. If the horse in question has not had its shoe replaced by that time, the Ground Jury will decide whether, at its discretion, the horse in question should receive a later starting place or be eliminated (Article 245.5).

**3.** Ownership information listed in the passport (and therefore registered with the appropriate Federation) is considered correct. If there are any issues with, or corrections to, the address/ownership shown in your horse's passport, you must bring these to the attention of the Show Secretary for a ruling by the organizing Committee by 5pm of the day prior to the start of the tournament to exempt you from Withholding Tax.

**4.** Competitors may carry the logo of their personal sponsor on the saddle cloth. The Chief Steward is responsible for ensuring the FEI regulations relating to Article 135 are respected by riders before entering the arena. Competitors not complying with Article 135 will not be permitted to enter the arena during competition.

**5.** In exceptional circumstances, together with the approval of the Chefs d'Equipe and the Ground Jury, the Organizing Committee reserves the right to modify the show schedule in order to clarify any matters or matters arising from an omission or due to unforeseen circumstances. Any such changes must be notified to all Competitors and Officials as soon as possible and they must be reported to the Secretary General by the Foreign Judge.

**6.** Competitors are responsible for saluting to the Ground Jury and Sponsors upon entering the competitive ring.





YOUR EQUINE DESTINATION FOR QUALITY  
AND SERVICE FOR THE PAST 40 YEARS.

Our **REWARDS PROGRAM** gives you more bang for your buck! Every dollar you spend earns points towards getting back **HUGE SAVINGS!** Stop in and shop local with us today!

[www.aikensaddlery.com](http://www.aikensaddlery.com)

1044 East Pine Log Road, Aiken, SC 29803 | 803-649-6583





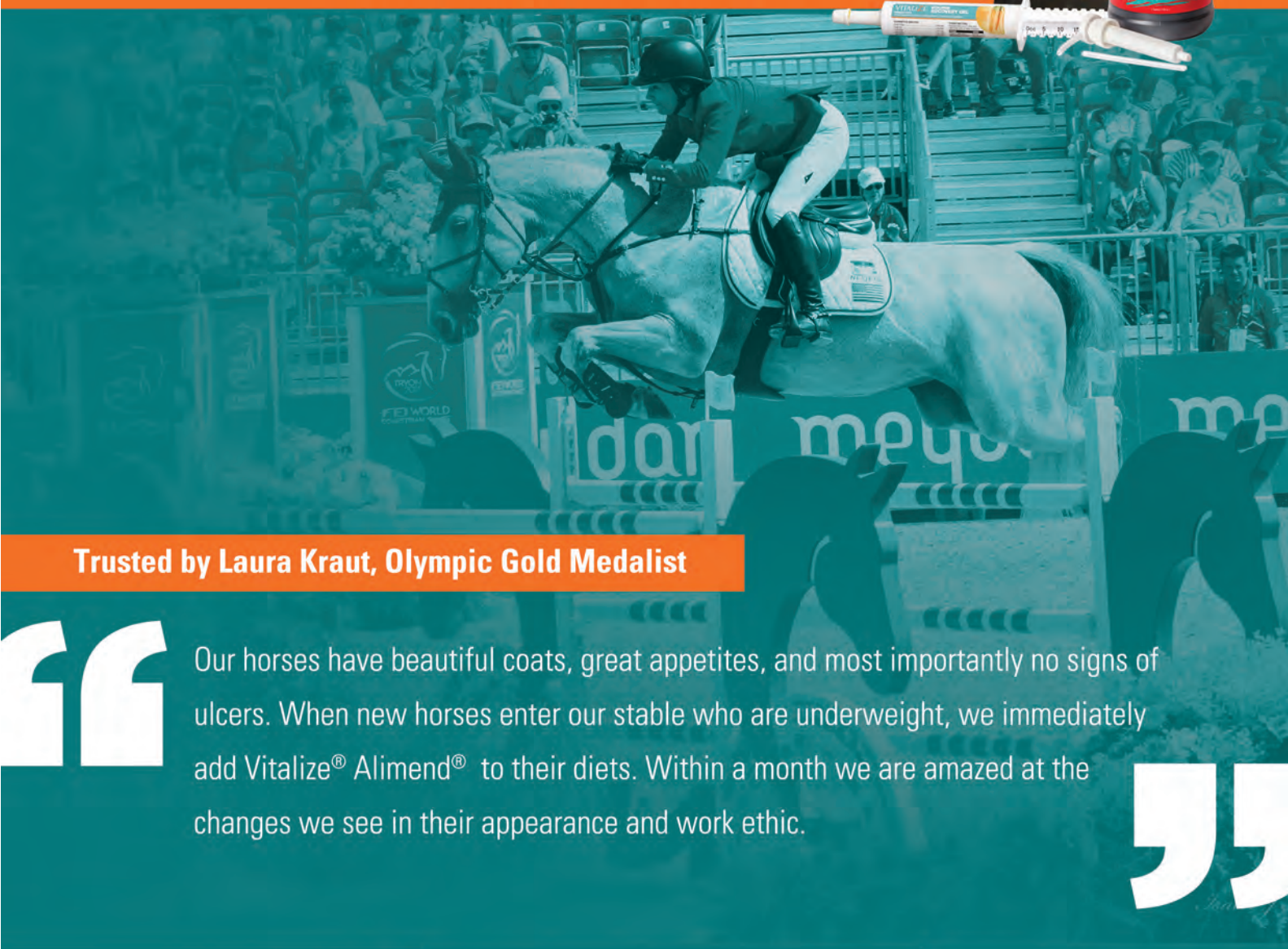
USANIMO.COM





# VITALIZE®

## *Win The Game* **AGAINST ULCERS** FROM STOMACH TO HINDGUT



**Trusted by Laura Kraut, Olympic Gold Medalist**

“Our horses have beautiful coats, great appetites, and most importantly no signs of ulcers. When new horses enter our stable who are underweight, we immediately add Vitalize® Alimend® to their diets. Within a month we are amazed at the changes we see in their appearance and work ethic.”

[www.vitalizeeq.com](http://www.vitalizeeq.com)





# HELPING THE WORLD'S MOST **VULNERABLE** EQUINES

There are **100 million** working horses, donkeys and mules helping around **600 million** people in the developing world to earn a living, put food on their tables and send their children to school.

Many of these animals are in pain, living under deplorable conditions. They are suffering from the lack of food and water, easily preventable injuries and diseases, as well as harsh living conditions.

## **YOU CAN PREVENT THEIR SUFFERING.**

You have had a profound impact on millions of lives—ONE by ONE. ONE gift at a time, ONE animal at a time, ONE community at a time. And now, you can help us further our mission through our new year-long effort: The Power of ONE.

**YOU CAN HELP END THE SUFFERING OF  
WORKING HORSES, DONKEYS AND MULES.**

**DONATE TODAY  
TEXT ORANGE TO 71760  
OR VISIT [BROOKEUSA.ORG](http://BROOKEUSA.ORG)**



**THE POWER OF**  **ONE** 

**859-296-0037  
[BROOKEUSA.ORG](http://BROOKEUSA.ORG)**





**CWD**

We care. You ride.







**DALMAN**  
J U M P C O.

## You Dream It, We Build It!

America's largest jump company ships worldwide!

- Custom & In Stock Jumps & Accessories
- Full Show & Schooling Courses
- Jump Packages & Course Rentals
- New Hunter, Equitation & Pony Jumps



Official Jump Company  
of US Equestrian

+1 (260) 402-8229

[DalmanJumpCo.com](http://DalmanJumpCo.com)

[@DalmanJumpCo](https://www.instagram.com/DalmanJumpCo)



THE LEADING ONLINE HORSE MARKET



# BUY AND SELL SPORT HORSES WORLDWIDE!

ADVERTISE UP TO **5 HORSES**  
**FOR FREE** EVERY YEAR!



**3.6 M**

Visits per month with a time  
on site of 6:40 minutes



**70.000**

Listings per year and every 20 minutes  
one horse is sold via ehorses



**865 M**

volume of inquiries in  
the last 12 month



## YOU OFTEN HAVE SEVERAL HORSES TO SELL?

Try Premium Plus for a fast and easy horseselling –  
**Worldwide!**

Market your horses twice as fast as a premium seller!  
#Offer unlimited horses and commission-free &  
international. Try ehorses Premium 14 days free of  
charge.



Scan the code and enjoy the  
benefits with selling Premium  
or Premium Plus!



THE LEADING ONLINE HORSE MARKET  
[www.ehorses.com](http://www.ehorses.com)





## NATURE'S LIGHT

Delivered using smart Stable Lights and award-winning Light Masks.



Health.  
Performance.  
Well-being.



Horses need light for far more than just vision. The constantly repeating cycles of dawn and dusk synchronise an internal clock system that coordinates all bodily functions to a 24-h (daily) and 365-day (annual) rhythm. Blue light is the most biologically effective light responsible for regulating an animal's internal rhythms. The Equilume Performance Lighting system comprises fully automated intelligent Stable Lights and mobile Light Masks that exploit the benefits of the blue wavelength light for horses.



### CORRECT LIGHTING IMPACTS PHYSIOLOGY AT THE CELLULAR LEVEL

It is hard to believe that a lighting system can impact so many aspects of a horse's health and welfare. Dr. Barbara Anne Murphy, Founder & CSO at Equilume, explains: "Normal indoor lighting falls significantly short on providing the optimum light spectrum for horses to function well. The Equilume Stable Light and Light Mask were specifically designed to stimulate cells that drive strong, healthy rhythms throughout the horse's body.

The goal is to provide the horse with lighting that best reflects and mimics the benefits of the natural environmental day-night cycle. This is essential to generate and maintain circadian rhythms that ensure optimum health and performance. Our research results as well as feedback from clients are very exciting; horses thrive under this system - they put on more lean muscle, increase appetites, improve behaviour and focus during training sessions, coat condition blossoms and are healthier overall."

Get in touch for more information or to arrange for a free lighting consultation.

*"Equilume light masks keep our performance horses in top condition and their coats glowing! Even with an extended break from competition over the winter, the blue light helped maintain their muscle tone and they came back in to work looking a million dollars."*

**Chris & Gabbi Chugg, Chuggy Equestrian, AUS**



*"After just 3 weeks of using the Cashel Light Mask, I saw a remarkable improvement in the horse's attitude and willingness to enjoy his work. The logic of more light for a stabled horse makes sense to me, and with this trial I was able to see the results. I am excited about what benefits the Equilume lights will have for all my horses."*

**Phillip Dutton, USA**



Contact: Michael Hardy +1 859 621 0120 [www.equilume.com](http://www.equilume.com)



# Perfect takeoffs & Landings EVERY TIME



EQUESTRIAN SERVICES  
INTERNATIONAL

DESIGN - CONSTRUCT - MAINTAIN

772.221.0707 | [ESIFOOTING.COM](http://ESIFOOTING.COM)

NEW YORK | KENTUCKY | NORTH CAROLINA | FLORIDA



# THE *Restylane*<sup>®</sup>

## LINE OF FILLERS

FOR RESULTS  
YOU CAN SEE

***A COMPLETE COLLECTION FOR  
NATURAL-LOOKING RESULTS<sup>1</sup>***

### *Restylane*<sup>®</sup> *Lyft*

For cheeks, laugh lines, & the backs of hands

### *Restylane*<sup>®</sup> *Refyne*

For moderate smile & laugh lines

### *Restylane*<sup>®</sup> *Silk*

For lips & the lines around them

### *Restylane*<sup>®</sup> -*L*

For smile lines & lips

### *Restylane*<sup>®</sup> *Defyne*

For deep smile & laugh lines

# *Restylane*<sup>®</sup>

40 million treatments worldwide.<sup>1</sup>  
20 years of proven results.<sup>1</sup>  
All reasons to choose Restylane<sup>®</sup>.

*Actual patient. Individual results may vary.*

#### Important Safety Information

The Restylane family of products includes *Restylane*<sup>®</sup>, *Restylane-L*<sup>®</sup>, *Restylane*<sup>®</sup> *Lyft with Lidocaine*, *Restylane*<sup>®</sup> *Silk*, *Restylane*<sup>®</sup> *Refyne*, and *Restylane*<sup>®</sup> *Defyne*.

#### APPROVED USES

*Restylane*<sup>®</sup> and *Restylane-L*<sup>®</sup> are for mid-to-deep injection into the facial tissue for the correction of moderate to severe facial wrinkles and folds, such as nasolabial folds, in patients over the age of 21.

*Restylane*<sup>®</sup> and *Restylane-L*<sup>®</sup> are also indicated for injection into the lips in patients over the age of 21.

*Restylane*<sup>®</sup> *Lyft with Lidocaine* is for deep implantation into the facial tissue for the correction of moderate to severe facial wrinkles and folds, such as nasolabial folds and for cheek augmentation and for the correction of age-related midface contour deficiencies in patients over the age of 21. *Restylane*<sup>®</sup> *Lyft with Lidocaine* is also indicated for injection into the subcutaneous plane in the dorsal hand to correct volume deficit in patients over the age of 21.

*Restylane*<sup>®</sup> *Silk* is for lip augmentation and for correction of perioral wrinkles in patients over the age of 21.

*Restylane*<sup>®</sup> *Refyne* is for mid-to-deep injection into the facial tissue for the correction of moderate to severe facial wrinkles and folds, such as nasolabial folds, in patients over the age of 21.

*Restylane*<sup>®</sup> *Defyne* is for mid-to-deep injection into the facial tissue for the correction of moderate to severe deep facial wrinkles and folds, such as nasolabial folds, in patients over the age of 21.

#### Are there any reasons why I should not use products within the Restylane<sup>®</sup> family? (Contraindications)

To ensure a safe procedure, your doctor will talk to you about your medical history to determine if you are an appropriate candidate for treatment. You should not use products within the Restylane family if:

- You have severe allergies with a history of severe reactions (anaphylaxis)
- You are allergic to lidocaine or to any of the gram-positive bacterial proteins used to make hyaluronic acid
- You are prone to bleeding or have been diagnosed with a bleeding disorder

#### Are there other precautions that I should discuss with my doctor?

- Tell your doctor if you are breastfeeding, pregnant, or trying to become pregnant. The safety of these products for use during pregnancy, or in women who are breastfeeding, has not been studied
- *Restylane*, *Restylane-L*, *Restylane*<sup>®</sup> *Lyft with Lidocaine*, *Restylane Refyne* and *Restylane Defyne* are intended to treat facial wrinkles and folds, such as nasolabial folds. *Restylane* and *Restylane-L* are also intended for lip enhancement. *Restylane*<sup>®</sup> *Lyft with Lidocaine* is also intended for injection in the dorsal hand to correct volume loss. Treatments in other areas of the face or body have not been evaluated in clinical studies.
- The safety and effectiveness of *Restylane*<sup>®</sup> *Silk* for areas other than the lips and perioral area have not been evaluated in clinical studies.

- Tell your doctor if you have any history of scarring, particularly thick and stiff scars, or any pigmentation (skin color disorders). These side effects can occur with hyaluronic acid fillers in general.
- Tell your doctor if you are planning other laser treatments or a chemical peel, as there is a possible risk of inflammation at the treatment site if these procedures are performed after treatment
- Patients who experience skin injury near the site of injection with these products may be at a higher risk for side effects
- Tell your doctor if you are on any medications to decrease your body's immune response (immunosuppressive therapy). Using these medications may increase your risk of bruising or bleeding at the gel injection site.
- Tell your doctor if you are using any "blood thinners" such as aspirin, warfarin, or any other medications that affect bleeding. Using these medications may increase your risk of bruising or bleeding at the gel injection site.
- The use of these products on gel injection sites with skin sores, pimples, rashes, hives, cysts, or infections should be postponed until healing is complete. Use of product in these areas could delay healing or make your skin problems worse.
- Tell your doctor if you have diseases, injuries, or disabilities of the hand.

#### What are the possible side effects?

The most commonly observed side effects are swelling, redness, pain, bruising, headache, tenderness, lump formation, itching at the injection site, and impaired hand function. These are typically mild in severity and typically resolve in less than 7 days in nasolabial folds and less than 14 days in lips. Serious but rare side effects include delayed onset infections, recurrence of herpetic eruptions, and superficial necrosis at the injection site.

One of the risks with using this product is unintentional injection into a blood vessel. The chances of this happening are very small, but if it does happen, the complications can be serious, and may be permanent. These complications, which have been reported for facial injections, can include vision abnormalities, blindness, stroke, temporary scabs, or permanent scarring of the skin.

As with all skin injection procedures, there is a risk of infection.

To report a side effect with any of the Restylane products, please call Galderma Laboratories, L.P. at 1-855-425-8722.

The Restylane family of products is available only through a licensed practitioner. Complete Instructions for Use are available at [www.RestylaneUSA.com](http://www.RestylaneUSA.com).

#### Reference

1. Data on file. Galderma Laboratories, L.P., 2019.

 GALDERMA

© 2019 Galderma Laboratories, L.P.  
All trademarks are the property of their respective owners.  
USMP/RES/0053/0219(1)



Restylane  
KYSSE™



Actual patient. Individual results may vary.



## Introducing our most kysse-able product yet, Restylane® Kysse—

a lip filler for natural-looking volume and kissable softness.<sup>1</sup>

### Important Safety Information

**Indication:** Restylane® Kysse is indicated for injection into the lips for lip augmentation and for correction of upper perioral rhytids in patients over the age of 21.

Restylane Kysse contains traces of gram-positive bacterial protein and is contraindicated for patients with allergies to such material or for patients with severe allergies that have required in-hospital treatment. Restylane Kysse should not be used by patients with bleeding disorders, with hypersensitivity to amide-type local anesthetics, such as lidocaine, or by women who are pregnant or breastfeeding.

Use of Restylane Kysse at the site of skin sores, pimples, rashes, hives, cysts, or infection should be postponed until healing is complete. The most commonly observed side effects are swelling, tenderness, bruising, pain, and redness at the injection site. These are typically mild in severity and usually resolve

within 7 days after treatment. Serious but rare side effects include delayed onset infections, recurrence of herpetic eruptions, and superficial necrosis and scarring at the injection site. Do not implant into blood vessels. Use with caution in patients recently treated with anticoagulant or platelet inhibitors to avoid bleeding and bruising.

Treatment volume should be limited to 1.5 mL per lip per treatment and 1.0 mL for upper perioral rhytid correction, as greater amounts significantly increase moderate and severe injection site reactions. The safety or effectiveness of treatment in areas other than lips and upper perioral rhytids has not been established in controlled clinical studies.

Restylane Kysse is only available through a licensed practitioner. Complete Instructions for Use are available at [www.RestylaneKysse.com](http://www.RestylaneKysse.com).

**REFERENCES:** 1. Restylane Kysse. Instructions for Use. Fort Worth, TX: Galderma Laboratories, L.P., 2020



Get connected to  
instant rewards at  
[AspireRewards.com](http://AspireRewards.com)

© 2020 Galderma Laboratories, L.P.  
All trademarks are the property of their respective owners.  
USMP/KYS/0103/0720





FROM THE RESTYLANE FAMILY OF FILLERS  
COMES OUR MOST KY SSE-ABLE PRODUCT YET

Restylane®

KYSSE™

# Your Kysse, Your Story

Actual patient. Individual results may vary.

## Introducing Restylane Kysse

the first hyaluronic acid (HA) lip filler with XpresHAN Technology™  
for natural-looking volume and Kysse-able softness—  
so you can tell your story like never before.<sup>1-4</sup>

Restylane Kysse is for lip augmentation and correction of upper perioral  
wrinkles for patients over the age of 21.

# These lips have a story to tell

**Restylane Kysse uses XpresHAn Technology (like “expression”) to enhance your natural beauty**

It's a flexible and supportive formulation that has the ability to integrate with your tissue.<sup>1,6</sup> So it becomes one with *your* lips, whether you're negotiating business—or bedtime.



## Natural-looking volume

**96% of subjects said their lips looked natural!**<sup>1\*</sup>  
And most had improved lip texture, too!<sup>1\*\*\*</sup>



## Kysse-able softness

**100%** said Restylane Kysse improved the appearance of their lips.<sup>1\*\*§</sup> And **9/10 partners** agreed lips were more Kysse-able.<sup>1\*\*</sup> *Lucky them.*



## Long-lasting lips

Results that last up to **1 year**, so you can keep telling your story beautifully.<sup>7,8||</sup>



## Less product, same results

A lower amount of Restylane Kysse (1.82 mL) was needed to show an improvement in lip fullness<sup>†#</sup> compared to Juvéderm Volbella® (2.24 mL)<sup>9#</sup>

*A little Kysse goes a long way.*

<sup>1</sup>In a phase 4 clinical study, a total of 59 subjects were treated with *Restylane*® *Kysse* in the lips (n=19) or *Restylane* *Kysse* in the lips in combination with either *Restylane*® *Refyne* (n=21) or *Restylane*® *Defyne* (n=37) in the nasolabial folds (NLFs) or marionette lines (MLs).

<sup>7</sup>8 weeks after treatment.

<sup>8</sup>Assessed by an independent photographic reviewer (IPR).

<sup>9</sup>On the Global Aesthetic Improvement Scale (GAIS).

<sup>||</sup>≥1 grade lip fullness improvement on the Medicis Lip Fullness Scale (MLFS)<sup>9</sup> at 48 weeks or Lip Fullness Grading Scale (LFGS)<sup>9</sup> at 1 year.

<sup>†</sup>Achieving ≥1 grade improvement on the Medicis Lip Fullness Scale (MLFS).

<sup>#</sup>Post hoc analysis data on the total amount of product needed to show an improvement in lip fullness (MLFS) 8 weeks after treatment.



**My lips still look  
and feel completely  
like my own.**

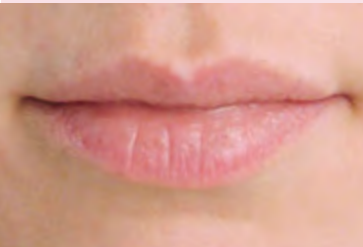
**Melissa**  
Real patient

Actual patient. Individual results may vary. Patient was compensated for her time.

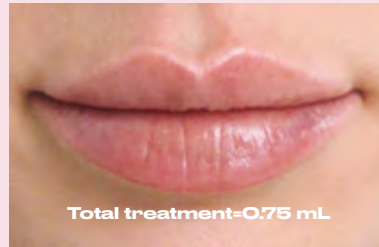


# Results that speak for themselves

Before



After



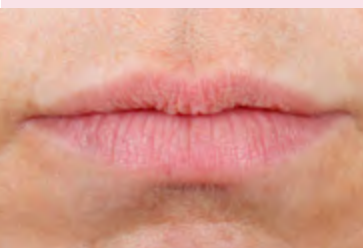
Before



After



Before



After



Treated with Restylane Kysse in the lips. Same day as treatment.  
Actual patients. Individual results may vary.

## Safety is a beautiful thing

**1 million Restylane Kysse treatments around the world already<sup>10</sup>\***

**So we're extra excited to bring Restylane Kysse to the US**

- Almost all commonly reported side effects with Restylane Kysse were mild<sup>7,9†</sup>
- The most commonly observed side effects are swelling, tenderness, bruising, pain, and redness at the injection site<sup>7,9</sup>

\*One treatment is defined as one syringe of the *Restylane Kysse* product.

†In the Restylane Kysse treatment group (N=183), all late-onset events (16/16) were assessed as mild in intensity. A majority (7/11; N=88) of the late-onset events in the control group (N=88) were assessed as moderate in intensity.

## Reward Yourself

**A little love for our loyal members**



**Save when you add Restylane Kysse to your treatment with ASPIRE rewards**

- Earn exclusive points with every qualifying treatment that you can redeem for discounts across our Restylane family of fillers
- Plus, you'll get after-care support and bonus points for telling us a little about yourself or telling your friends about Kysse



**My husband's been coming back for 2nd (and 3rd) kisses!**

**Nia**  
Real patient

Actual patient. Individual results may vary. Patient was compensated for her time.

## Important Safety Information

**Indication:** *Restylane® Kysse* is indicated for injection into the lips for lip augmentation and for correction of upper perioral rhytids in patients over the age of 21.

*Restylane Kysse* contains traces of gram-positive bacterial protein and is contraindicated for patients with allergies to such material or for patients with severe allergies that have required in-hospital treatment. *Restylane Kysse* should not be used by patients with bleeding disorders, with hypersensitivity to amide-type local anesthetics, such as lidocaine, or by women who are pregnant or breastfeeding.

Use of *Restylane Kysse* at the site of skin sores, pimples, rashes, hives, cysts, or infection should be postponed until healing is complete. The most commonly observed side effects are swelling, tenderness, bruising, pain, and redness at the injection site. These are typically mild in severity and usually resolve within 7 days after treatment. Serious but rare side effects include delayed onset infections, recurrence of herpetic eruptions, and superficial necrosis and scarring at the injection site. Do not implant into blood vessels. Use with caution in patients recently treated with anticoagulant or platelet inhibitors to avoid bleeding and bruising.

Treatment volume should be limited to 1.5 mL per lip per treatment and 1.0 mL for upper perioral rhytid correction, as greater amounts significantly increase moderate and severe injection site reactions. The safety or effectiveness of treatment in areas other than lips and upper perioral rhytids has not been established in controlled clinical studies.

*Restylane Kysse* is only available through a licensed practitioner. Complete Instructions for Use are available at [www.RestylaneUSA.com](http://www.RestylaneUSA.com).

**References:** **1.** Data on file. 05DF1807 Clinical Study Report. Fort Worth, TX: Galderma Laboratories, L.P., 2020. **2.** Segura S, Anthonioz L, Fuchez F, Herbage B. A complete range of hyaluronic acid filler with distinctive physical properties specifically designed for optimal tissue adaptations. *J Drugs Dermatol*. 2012;11(suppl 1):s5-s8. **3.** Philipp-Dormston WG, Wong C, Schuster B, Larsson MK, Podda M. Evaluating perceived naturalness of facial expression after fillers to the nasolabial folds and lower face with standardized video and photography. *Dermatol Surg*. 2018;44:826-832. **4.** Öhrlund A. Evaluation of theometry amplitude sweep cross-over point as an index of flexibility for HA fillers. *JCDSA*. 2018;8(2):47-54. **5.** Data on file. MA-33483 Clinical Study Report. Fort Worth, TX: Galderma Laboratories, L.P., 2018. **6.** Lundgren B, Sandkvist U, Bordier N, Gauthier B. Using a new photo scale to compare product integration of different hyaluronan-based fillers after injection in human ex vivo skin. *J Drugs Dermatol*. 2018;17(9):982-986. **7.** Restylane Kysse. Instructions for Use. Fort Worth, TX: Galderma Laboratories, L.P., 2020. **8.** Hilton S, Sattler G, Berg AK, Samuelson U, Wong C. Randomized, evaluator-blinded study comparing safety and effect of two hyaluronic acid gels for lips enhancement. *Dermatol Surg*. 2018;44:261-269. **9.** Data on file. 43USK1701 Clinical Study Report. Fort Worth, TX: Galderma Laboratories, L.P., 2019. **10.** Data on file. Fort Worth, TX: Galderma Laboratories, L.P.

© 2020 Galderma Laboratories, L.P. All trademarks are the property of their respective owners. USMP/KYS/0092/0620 07/20



Restylane®  
KYSSE™

# Your Kysse, Your Story

Actual patient. Individual results may vary.

**Tell your story like never  
before with Restylane Kysse**

the first HA lip filler with XpresHAN Technology for  
natural-looking volume and Kysse-able softness.<sup>1-4</sup>

**Ask your aesthetic specialist about Restylane Kysse  
and visit [GetRestylaneKysse.com](http://GetRestylaneKysse.com)**

**Please see complete Instructions for Use at [RestylaneUSA.com/ifu](http://RestylaneUSA.com/ifu)**



*We believe  
in green grass,  
blue skies,  
fresh air, and  
happy horses.*



*We believe  
that even  
small changes  
can have  
huge impacts.*

# GREEN IS THE NEW BLUE<sup>TM</sup> *#SustainableSport*

*We're making strides toward a greener tomorrow.  
Join us at*

**GreenIsTheNewBlue.org**



When everything is riding on it,  
this is the number more people call.



Face it. This is not just any competition. That's why when you're getting ready for it, you don't need just any pharmacy.

The team at Hagyard Pharmacy is comprised of riders, competitors, and horse fanatics. We know just what you and your horse are feeling as you get ready to compete at an elite event, so we listen. Offering products that range from Vetrap, to supplements, to specialty compounds, we process the nuances of you and your horse's needs to provide safe, effective products at the highest level.

Because when everything is riding on it, you need more than a just a pharmacy. You need Hagyard Pharmacy.

**HAGYARD**  
PHARMACY





# horseflight.com

Excellence in International Horse Shipping

## Fly First Class

Passion.  
Safety.  
Experience.

Transporting the competitive  
horse world one flight at a time.

[www.horseflight.com](http://www.horseflight.com)  
(844) 832-5848

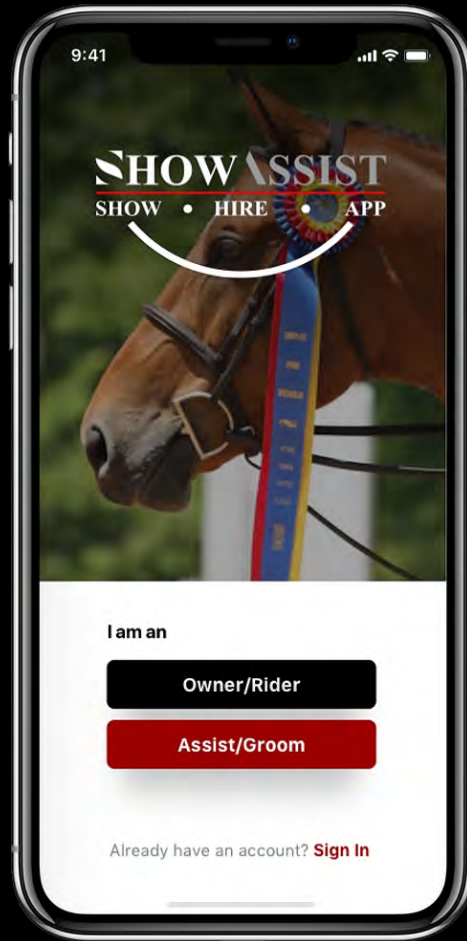
Follow & tag us:    @horseflight

horseflight.com



# SHOW ASSIST

SHOW • HIRE • APP



## PEOPLE-CENTERED. SHOW-DRIVEN.

ShowAssist is an on-demand hiring mobile app that connects owners, trainers and riders to experienced grooms, braiders, bodyworkers, stall cleaners and other support staff to provide temporary assistance while at rated USEF and Equestrian Canada shows. It is free to post jobs and to apply!

*Download today!*



SHOWASSIST.ORG

# Power YOUR Passion



**At SmartPak,** we know that riding is more than just a sport or hobby. Your horse gives you his all and deserves support that works as hard as he does. Power your passion with cutting-edge SmartSupplements™, designed to help him feel and perform his best. **We guarantee it.**

**LEARN MORE** at [SmartPak.com/SmartSupplements](https://SmartPak.com/SmartSupplements)  
or call our Horse Health Experts at 1-800-461-8898



**SMARTPAK**  
SmartPak.com

**SmartSupplements**





A woman in equestrian attire, including a dark helmet and jacket, is adjusting the bridle of a brown horse. The horse is wearing a white protective mask over its eyes. The background is dark, and the scene is lit with dramatic lighting. A bright blue diagonal line runs from the top left to the bottom right of the image.

*Champions*  
**ALWAYS HUNGER FOR MORE.**



**PROELITE**

*There can only be one best.*

DISCOVER SOMETHING NEW IN ULTRA-PREMIUM HORSE FEED AT [PROELITEHORSEFEED.COM](https://PROELITEHORSEFEED.COM)

#PROELITEPRO SAMANTHA SCHAEFER



Elegance is an attitude

*Kate Winslet*  
Kate Winslet

LONGINES



The Longines  
Master Collection

This show offers one or more classes that are recognized by the

## NORTH AMERICAN LEAGUE



For riders to receive credit, they must be a current member.

Membership is valid for the qualifying year and entitles the rider to earn points on one or more horses shown in accredited classes.

National Finals are held at the Capital Challenge horse show

West Coast Finals are held at the International Jumper Festival.

Please complete and mail the application with payment to:

North American League

1298 Royal Rd.

Annville, PA 17003

Phone: 717-867-5643; Fax: 717-867-2174

[www.ryegate.com](http://www.ryegate.com)

[nal@ryegate.com](mailto:nal@ryegate.com)

Join Online at: [www.ryegate.com](http://www.ryegate.com)

Please enroll me as a member of the North American League:

Date: \_\_\_\_\_ ☐ Amateur ☐ Junior Qualifying Year: \_\_\_\_\_

Membership is effective the date received  
in the league office with payment.

(September 1, XXXX – August 31, XXXX)

### Member Information

Name: \_\_\_\_\_

Address: \_\_\_\_\_

City: \_\_\_\_\_ State: \_\_\_\_\_ Zip Code: \_\_\_\_\_

Phone: \_\_\_\_\_ Fax: \_\_\_\_\_

Email: \_\_\_\_\_ DOB: \_\_\_\_\_

☐ Payment of \$40.00 enclosed USEF: \_\_\_\_\_

### Cardholder Information

Please Charge My: ☐ Master Card ☐ Visa ☐ Discover ☐ AmEx

Name (As Shown On Card): \_\_\_\_\_

Address: \_\_\_\_\_

City: \_\_\_\_\_ State: \_\_\_\_\_ Zip Code: \_\_\_\_\_

Card Number: \_\_\_\_\_ - \_\_\_\_\_ - \_\_\_\_\_ - \_\_\_\_\_

Expiration Date: \_\_\_\_ / \_\_\_\_ CVV: \_\_\_\_\_

I authorize Ryegate Show Services on the behalf of the NAL to charge my card.

Signature: \_\_\_\_\_



# WASHINGTON INTERNATIONAL HOSE SHOW CHILDREN'S & ADULT CHAMPIONSHIP AND WIHS EQUITATION



Earn points here to qualify for the:

\$10,000 Adult Jumper Final

\$10,000 Adult Hunter Final

\$10,000 Children's Jumper Final

\$10,000 Children's Hunter Final

WIHS Equitation Final WIHS Pony Equitation Final

Held at the Washington International Horse Show in Washington, DC

Competitors must submit a membership application for the current qualifying year to accrue points in all WIHS sanctioned classes. Membership entitles a rider to earn points on one or more horses in any of the divisions.

Please complete and mail the application with payment to:

WIHS

1298 Royal Rd.

Annville, PA 17003

Phone: 717-867-5643; Fax: 717-867-2174

[www.ryegate.com](http://www.ryegate.com)

[wihs@ryegate.com](mailto:wihs@ryegate.com)

Join online at: [WWW.RYEGATE.COM](http://WWW.RYEGATE.COM)

Please enroll me as a member of the WIHS Championships & Equitation: ☐ Amateur ☐ Junior

Date: \_\_\_\_\_

Membership is effective the date received  
in the league office with payment.

**Equitation Riders Only**

☐ EAST

☐ WEST

Qualifying Year: \_\_\_\_\_

(September 1, XXXX – August 31, XXXX)

## Member Information

Name: \_\_\_\_\_

Address: \_\_\_\_\_

City: \_\_\_\_\_ State: \_\_\_\_\_ Zip Code: \_\_\_\_\_

Phone: \_\_\_\_\_ Fax: \_\_\_\_\_

Email: \_\_\_\_\_ DOB: \_\_\_\_\_

☐ Payment of \$40.00 enclosed

USEF: \_\_\_\_\_

## Cardholder Information

Please Charge My: ☐ Master Card ☐ Visa ☐ Discover ☐ AmEx

Name (As Shown On Card): \_\_\_\_\_

Address: \_\_\_\_\_

City: \_\_\_\_\_ State: \_\_\_\_\_ Zip Code: \_\_\_\_\_

Card Number: \_\_\_\_\_ - \_\_\_\_\_ - \_\_\_\_\_ - \_\_\_\_\_

Expiration Date: \_\_\_\_ / \_\_\_\_ CVV: \_\_\_\_\_

I authorize Ryegate Show Services on the behalf of the NAL to charge my card.

Signature: \_\_\_\_\_

# THJA Membership / Horse Registration Form – 2021

Membership year runs from December 1 to November 30

Horse Registration is for Life of Horse

Name & Address Below is for Membership or Horse Owner as applicable.

NAME: \_\_\_\_\_

(If horse owner is a stable or corporation, please give name of senior partner or executive.)

ADDRESS: \_\_\_\_\_

CITY, ST, ZIP \_\_\_\_\_

TELEPHONE: (H) \_\_\_\_\_ (O) \_\_\_\_\_

E-Mail Address: \_\_\_\_\_

- ☐ Check here if you do not want your phone number in the THJA Member Roster.
- ☐ Check here if you do not want your e-mail address in the THJA Member Roster.
- ☐ Check here to keep your name off mailing lists and not in the THJA Member Roster.

Action Desired: ☐ 1 year renewal ☐ 2 year renewal ☐ 3 year renewal

Membership Status: ☐ Junior ☐ Amateur ☐ Professional

\_\_\_\_\_ **JUNIOR** (Not having reached 18<sup>th</sup> birthday on 12/1/17): \$40.00/year  
Junior Rider's Birth Date: \_\_\_\_\_ USEF No: \_\_\_\_\_ (Required)

\_\_\_\_\_ **SENIOR** (18 & Over): \$50.00/year  
Amateur Owner Birth Date: \_\_\_\_\_ USEF No: \_\_\_\_\_ (Required)

\_\_\_\_\_ **LIFE** \$700.00 USEF No: \_\_\_\_\_ (Required) Birth Date: \_\_\_\_\_ (Reqd.)

\_\_\_\_\_ **HORSE REGISTRATION** \$45.00 (Lifetime Registration) USEF No: \_\_\_\_\_ (Reqd.)

\_\_\_\_\_ **HORSE OWNERSHIP TRANSFER** \$30.00 (THJA Registered Horse)

Previous Owner: \_\_\_\_\_

\_\_\_\_\_ **HORSE NAME CHANGE** \$15.00 (THJA Registered Horse)

Previous Horse Name: \_\_\_\_\_

NAME OF HORSE: \_\_\_\_\_

*(If owner entered above or rider is not a member, no points will be credited to the reg. horse.)*

SEX: ☐ Gelding ☐ Mare ☐ Stallion  
Color: \_\_\_\_\_ Height: \_\_\_\_\_ Yr Foaled: \_\_\_\_\_

If you join the THJA before the end of a horse show, your points will count for that show.

There are 4 ways to do this:

1. Give this completed form to the show secretary along with a check as payment for your membership.
2. Go to the THJA website and pay for your membership with a credit card.  
**www.thja.org**
3. Call Ann Yaffe at the number below and complete the membership over the phone. There is a \$20 charge for this service
4. Return this completed form along with your payment to the address shown below.

PLEASE SUBMIT THIS FORM WITH THE APPROPRIATE DUES MADE PAYABLE TO "THJA" TO:  
ANN YAFFE - 3299 BEAVER CREEK DRIVE - PATTISON, TX 77423 - (281) 934-3251



USEF Competition Name: o t o t n t e n t i o n l

USEF#:

Competition Division(s) and Rating(s): n i o m e m t e m e i l e n l t m e i s m e m e



# MAAP

## MINOR ATHLETE ABUSE PREVENTION

### LEARN ABOUT MAAP POLICIES



SafeSport Training



One-On-One Interactions



Local Travel



Social Media and  
Electronic Communications



Read about these and more at  
[usef.org/MAAPP](https://usef.org/MAAPP)

### REPORT MAAP POLICY VIOLATIONS



[usef.org/safe-sport/reporting](https://usef.org/safe-sport/reporting)  
859-225-6915



# 2021 TOUR DATES

- ① **April 23-24** | Kentucky Invitational CSI3\*
- ② ❖ **June 9-13** | Split Rock Hunter Jumper Classic I CSI2\*
- ③ ❖ **June 15-20** | Split Rock Hunter Jumper Classic II CSI3\*
- ④ ❖ **July 21-25** | Denver International CSI2\*
- ⑤ **Sept 8-12** | Sonoma International CSI2\*
- ⑥ ✦ **Oct 6-10** | Columbus International CSI2\*
- ⑦ **Nov 9-14** | Aiken International CSI3\*
- ⑧ **Dec 14-19** | Fort Worth International CSI4\*-W

❖ Hunters and Equitation Included

✦ Hunters Included



**SPLITROCK**  
JUMPING TOUR

5425 Greenwich Pike  
Lexington, KY 40511

859.252.3247

[info@splitrockjumpingtour.com](mailto:info@splitrockjumpingtour.com)  
[www.splitrockjumpingtour.com](http://www.splitrockjumpingtour.com)