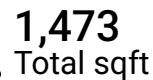
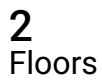
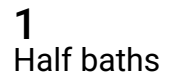
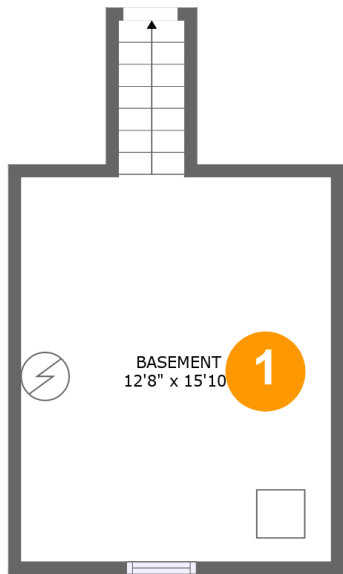


**186 Nelson Street, East Ward, Brantford, County of Brant,  
Ontario, Canada, N3S 4B9**



Home report

186 Nelson Street, East Ward, Brantford, County of Brant,  
Ontario, Canada, N3S 4B9



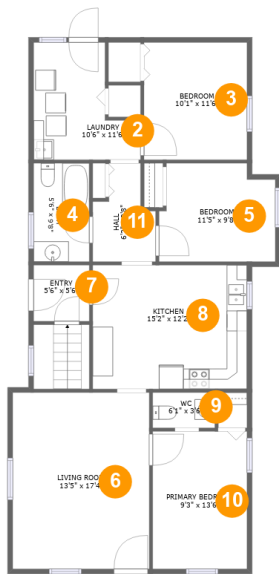
Room dimensions

Floor 1 Total sqft: 254    Living area: 0

#		Dimensions	sqft	Counted as living area
1	Basement	12'8" x 15'10"	218 sq. ft	No

Home report

186 Nelson Street, East Ward, Brantford, County of Brant,  
Ontario, Canada, N3S 4B9



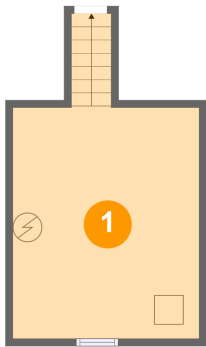
Room dimensions

Floor 2 Total sqft: 1219    Living area: 1219

#		Dimensions	sqft	Counted as living area
2	Laundry	10'6" x 11'6"	94 sq. ft	Yes
3	Bedroom	10'1" x 11'6"	117 sq. ft	Yes
4	Bath	5'6" x 9'8"	52 sq. ft	Yes
5	Bedroom	11'5" x 9'8"	103 sq. ft	Yes
6	Living Room	13'5" x 17'4"	232 sq. ft	Yes
7	Entry	5'6" x 5'6"	30 sq. ft	Yes
8	Kitchen	15'2" x 12'2"	184 sq. ft	Yes
9	WC	6'1" x 3'6"	21 sq. ft	Yes
10	Primary Bedroom	9'3" x 13'6"	125 sq. ft	Yes
11	Hall	6'2" x 9'8"	47 sq. ft	Yes

186 Nelson Street, East Ward, Brantford, County of Brant,  
Ontario, Canada, N3S 4B9

1 Floor 1 - Basement



Dimensions: 12'8" x 15'10"  
Area: 218 sq. ft  
Counted as living area: No

Heated: Yes  
Finished: No  
Enclosed: Yes  
Contiguous: Yes  
Permitted: Yes  
Wet space: No  
Addition: No  
Conversion: No

2 Floor 2 - Laundry



Dimensions: 10'6" x 11'6"  
Area: 94 sq. ft  
Counted as living area: Yes

Heated: Yes  
Finished: Yes  
Enclosed: Yes  
Contiguous: Yes  
Permitted: Yes  
Wet space: No  
Addition: No  
Conversion: No

186 Nelson Street, East Ward, Brantford, County of Brant,  
Ontario, Canada, N3S 4B9

3 Floor 2 - Bedroom



Dimensions: 10'1" x 11'6"  
Area: 117 sq. ft  
Counted as living area: Yes

Heated: Yes  
Finished: Yes  
Enclosed: Yes  
Contiguous: Yes  
Permitted: Yes  
Wet space: No  
Addition: No  
Conversion: No

4 Floor 2 - Bath



Dimensions: 5'6" x 9'8"  
Area: 52 sq. ft  
Counted as living area: Yes

Heated: Yes  
Finished: Yes  
Enclosed: Yes  
Contiguous: Yes  
Permitted: Yes  
Wet space: Yes  
Addition: No  
Conversion: No

5 Floor 2 - Bedroom



Dimensions: 11'5" x 9'8"  
Area: 103 sq. ft  
Counted as living area: Yes

Heated: Yes  
Finished: Yes  
Enclosed: Yes  
Contiguous: Yes  
Permitted: Yes  
Wet space: No  
Addition: No  
Conversion: No

6 Floor 2 - Living Room



Dimensions: 13'5" x 17'4"  
Area: 232 sq. ft  
Counted as living area: Yes

Heated: Yes  
Finished: Yes  
Enclosed: Yes  
Contiguous: Yes  
Permitted: Yes  
Wet space: No  
Addition: No  
Conversion: No

7 Floor 2 - Entry



Dimensions: 5'6" x 5'6"  
Area: 30 sq. ft  
Counted as living area: Yes

Heated: Yes  
Finished: Yes  
Enclosed: Yes  
Contiguous: Yes  
Permitted: Yes  
Wet space: No  
Addition: No  
Conversion: No

8 Floor 2 - Kitchen



Dimensions: 15'2" x 12'2"  
Area: 184 sq. ft  
Counted as living area: Yes

Heated: Yes  
Finished: Yes  
Enclosed: Yes  
Contiguous: Yes  
Permitted: Yes  
Wet space: No  
Addition: No  
Conversion: No

9 Floor 2 - WC



Dimensions: 6'1" x 3'6"  
Area: 21 sq. ft  
Counted as living area: Yes

Heated: Yes  
Finished: Yes  
Enclosed: Yes  
Contiguous: Yes  
Permitted: Yes  
Wet space: Yes  
Addition: No  
Conversion: No

10 Floor 2 - Primary Bedroom



Dimensions: 9'3" x 13'6"  
Area: 125 sq. ft  
Counted as living area: Yes

Heated: Yes  
Finished: Yes  
Enclosed: Yes  
Contiguous: Yes  
Permitted: Yes  
Wet space: No  
Addition: No  
Conversion: No

11 Floor 2 - Hall



Dimensions: 6'2" x 9'8"  
Area: 47 sq. ft  
Counted as living area: Yes

Heated: Yes  
Finished: Yes  
Enclosed: Yes  
Contiguous: Yes  
Permitted: Yes  
Wet space: No  
Addition: No  
Conversion: No