



Home report


213 Haddington Street, Caledonia, Regional Municipality of Haldimand-Norfolk, Ontario, Canada, N3W 1G1




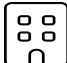
Property summary


 **1** Garages


 **2** Bedrooms

 **3** Bathrooms

 **0** Half baths

 **2** Floors

 **2,569** Gross living area sqft

 **2,984** Total sqft

213 Haddington Street, Caledonia, Regional Municipality of Haldimand-Norfolk, Ontario, Canada, N3W 1G1



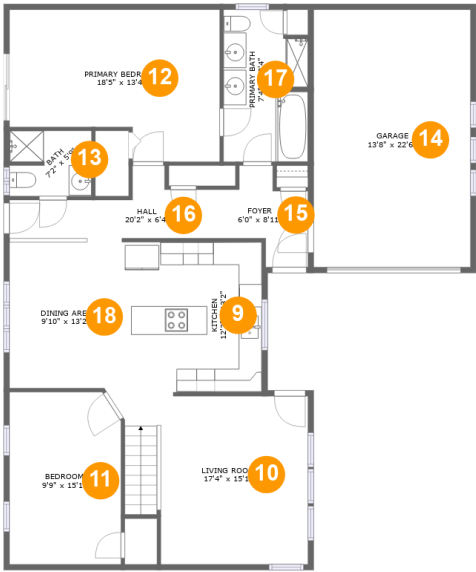
Room dimensions

Floor 1 Total sqft: 1345 Living area: 1265

#		Dimensions	sqft	Counted as living area
1	Room	13'2" x 17'3"	213 sq. ft	Yes
2	Hall	3'4" x 17'7"	60 sq. ft	Yes
3	Recreation Room	16'1" x 15'6"	226 sq. ft	Yes
4	Room	9'9" x 15'6"	151 sq. ft	Yes
5	Electrical Room	9'2" x 8'3"	76 sq. ft	No
6	Bath	6'8" x 13'7"	88 sq. ft	Yes
7	Laundry	4'9" x 10'2"	48 sq. ft	Yes
8	Room	19'2" x 15'1"	286 sq. ft	Yes

Home report

213 Haddington Street, Caledonia, Regional Municipality of Haldimand-Norfolk, Ontario, Canada, N3W 1G1



Room dimensions

Floor 2 Total sqft: 1639 Living area: 1304

#		Dimensions	sqft	Counted as living area
9	Kitchen	12'3" x 13'2"	161 sq. ft	Yes
10	Living Room	17'4" x 15'1"	226 sq. ft	Yes
11	Bedroom	9'9" x 15'1"	145 sq. ft	Yes
12	Primary Bedroom	18'5" x 13'4"	212 sq. ft	Yes
13	Bath	7'2" x 5'9"	40 sq. ft	Yes
14	Garage	13'8" x 22'6"	310 sq. ft	No
15	Foyer	6'0" x 8'11"	41 sq. ft	Yes
16	Hall	20'2" x 6'4"	85 sq. ft	Yes
17	Primary Bath	7'4" x 13'4"	97 sq. ft	Yes
18	Dining Area	9'10" x 13'2"	126 sq. ft	Yes

213 Haddington Street, Caledonia, Regional Municipality of Haldimand-Norfolk, Ontario, Canada, N3W 1G1

1 Floor 1 - Room



Dimensions: 13'2" x 17'3"
Area: 213 sq. ft
Counted as living area: Yes

Heated: Yes
Finished: Yes
Enclosed: Yes
Contiguous: Yes
Permitted: Yes
Wet space: No
Addition: No
Conversion: No

2 Floor 1 - Hall



Dimensions: 3'4" x 17'7"
Area: 60 sq. ft
Counted as living area: Yes

Heated: Yes
Finished: Yes
Enclosed: Yes
Contiguous: Yes
Permitted: Yes
Wet space: No
Addition: No
Conversion: No

213 Haddington Street, Caledonia, Regional Municipality of
Haldimand-Norfolk, Ontario, Canada, N3W 1G1

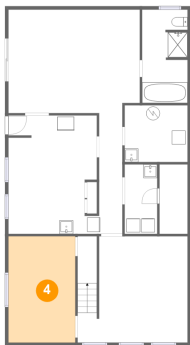
3 Floor 1 - Recreation Room



Dimensions: 16'1" x 15'6"
Area: 226 sq. ft
Counted as living area: Yes

Heated: Yes
Finished: Yes
Enclosed: Yes
Contiguous: Yes
Permitted: Yes
Wet space: No
Addition: No
Conversion: No

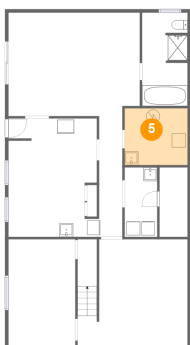
4 Floor 1 - Room



Dimensions: 9'9" x 15'6"
Area: 151 sq. ft
Counted as living area: Yes

Heated: Yes
Finished: Yes
Enclosed: Yes
Contiguous: Yes
Permitted: Yes
Wet space: No
Addition: No
Conversion: No

5 Floor 1 - Electrical Room



Dimensions: 9'2" x 8'3"
Area: 76 sq. ft
Counted as living area: No

Heated: No
Finished: No
Enclosed: Yes
Contiguous: Yes
Permitted: Yes
Wet space: No
Addition: No
Conversion: No

213 Haddington Street, Caledonia, Regional Municipality of
Haldimand-Norfolk, Ontario, Canada, N3W 1G1

6 Floor 1 - Bath



Dimensions: 6'8" x 13'7"
Area: 88 sq. ft
Counted as living area: Yes

Heated: Yes
Finished: Yes
Enclosed: Yes
Contiguous: Yes
Permitted: Yes
Wet space: Yes
Addition: No
Conversion: No

7 Floor 1 - Laundry



Dimensions: 4'9" x 10'2"
Area: 48 sq. ft
Counted as living area: Yes

Heated: Yes
Finished: Yes
Enclosed: Yes
Contiguous: Yes
Permitted: Yes
Wet space: No
Addition: No
Conversion: No

8 Floor 1 - Room

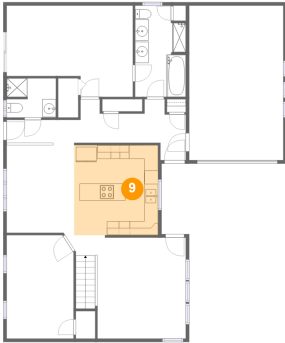


Dimensions: 19'2" x 15'1"
Area: 286 sq. ft
Counted as living area: Yes

Heated: Yes
Finished: Yes
Enclosed: Yes
Contiguous: Yes
Permitted: Yes
Wet space: No
Addition: No
Conversion: No

213 Haddington Street, Caledonia, Regional Municipality of
Haldimand-Norfolk, Ontario, Canada, N3W 1G1

9 Floor 2 - Kitchen



Dimensions: 12'3" x 13'2"
Area: 161 sq. ft
Counted as living area: Yes

Heated: Yes
Finished: Yes
Enclosed: Yes
Contiguous: Yes
Permitted: Yes
Wet space: No
Addition: No
Conversion: No

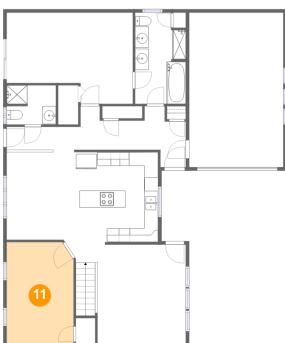
10 Floor 2 - Living Room



Dimensions: 17'4" x 15'1"
Area: 226 sq. ft
Counted as living area: Yes

Heated: Yes
Finished: Yes
Enclosed: Yes
Contiguous: Yes
Permitted: Yes
Wet space: No
Addition: No
Conversion: No

11 Floor 2 - Bedroom

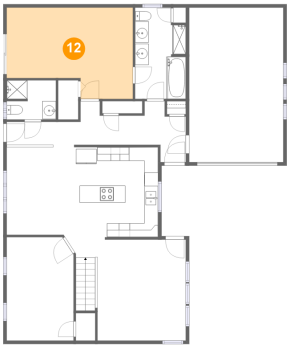


Dimensions: 9'9" x 15'1"
Area: 145 sq. ft
Counted as living area: Yes

Heated: Yes
Finished: Yes
Enclosed: Yes
Contiguous: Yes
Permitted: Yes
Wet space: No
Addition: No
Conversion: No

213 Haddington Street, Caledonia, Regional Municipality of Haldimand-Norfolk, Ontario, Canada, N3W 1G1

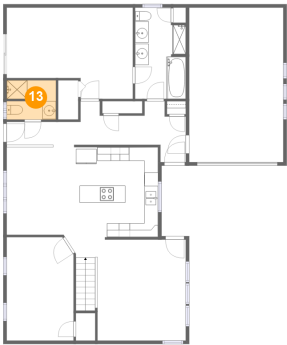
12 Floor 2 - Primary Bedroom



Dimensions: 18'5" x 13'4"
Area: 212 sq. ft
Counted as living area: Yes

Heated: Yes
Finished: Yes
Enclosed: Yes
Contiguous: Yes
Permitted: Yes
Wet space: No
Addition: No
Conversion: No

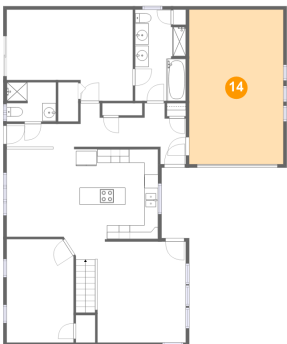
13 Floor 2 - Bath



Dimensions: 7'2" x 5'9"
Area: 40 sq. ft
Counted as living area: Yes

Heated: Yes
Finished: Yes
Enclosed: Yes
Contiguous: Yes
Permitted: Yes
Wet space: Yes
Addition: No
Conversion: No

14 Floor 2 - Garage

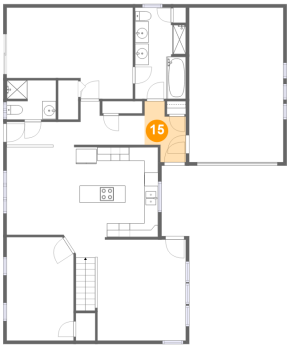


Dimensions: 13'8" x 22'6"
Area: 310 sq. ft
Counted as living area: No

Heated: No
Finished: No
Enclosed: Yes
Contiguous: Yes
Permitted: Yes
Wet space: No
Addition: No
Conversion: No

213 Haddington Street, Caledonia, Regional Municipality of Haldimand-Norfolk, Ontario, Canada, N3W 1G1

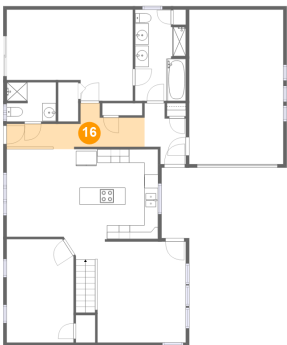
15 Floor 2 - Foyer



Dimensions: 6'0" x 8'11"
Area: 41 sq. ft
Counted as living area: Yes

Heated: Yes
Finished: Yes
Enclosed: Yes
Contiguous: Yes
Permitted: Yes
Wet space: No
Addition: No
Conversion: No

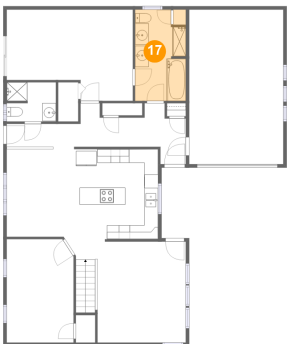
16 Floor 2 - Hall



Dimensions: 20'2" x 6'4"
Area: 85 sq. ft
Counted as living area: Yes

Heated: Yes
Finished: Yes
Enclosed: Yes
Contiguous: Yes
Permitted: Yes
Wet space: No
Addition: No
Conversion: No

17 Floor 2 - Primary Bath

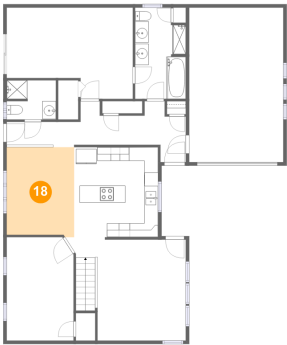


Dimensions: 7'4" x 13'4"
Area: 97 sq. ft
Counted as living area: Yes

Heated: Yes
Finished: Yes
Enclosed: Yes
Contiguous: Yes
Permitted: Yes
Wet space: Yes
Addition: No
Conversion: No

213 Haddington Street, Caledonia, Regional Municipality of
Haldimand-Norfolk, Ontario, Canada, N3W 1G1

18 Floor 2 - Dining Area



Dimensions: 9'10" x 13'2"
Area: 126 sq. ft
Counted as living area: Yes

Heated: Yes
Finished: Yes
Enclosed: Yes
Contiguous: Yes
Permitted: Yes
Wet space: No
Addition: No
Conversion: No