



Home report


24 Farmingdale Crescent, Dewitt, Fruitland, Stoney Creek,
Ontario, Canada, L8G 4H5





Property summary


**1** Garages


**4** Bedrooms

**3** Bathrooms

**0** Half baths

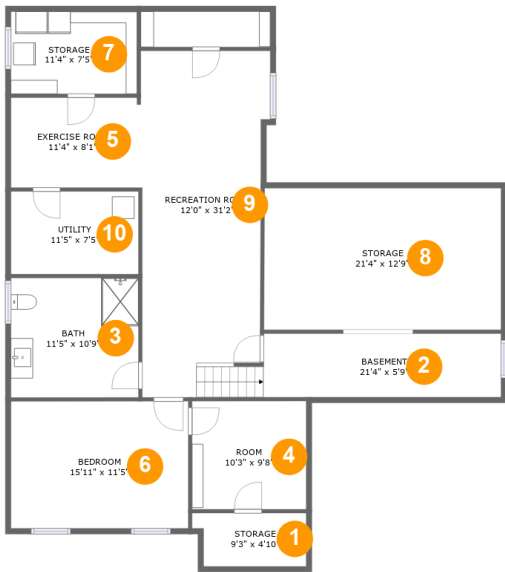
**3** Floors

**2,893** Gross living area sqft

**4,399** Total sqft

Home report

24 Farmingdale Crescent, Dewitt, Fruitland, Stoney Creek,
Ontario, Canada, L8G 4H5



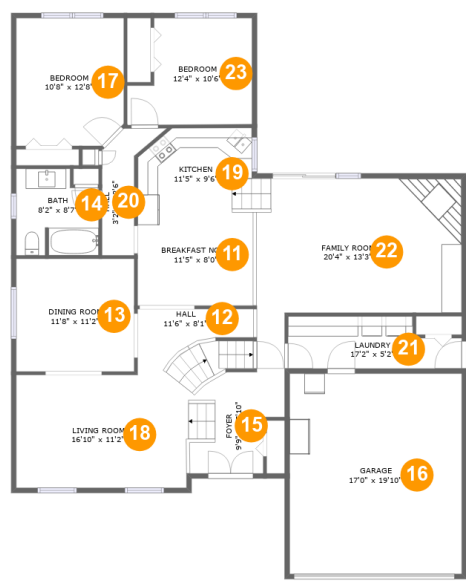
Room dimensions

Floor 1 Total sqft: 1632 Living area: 856

#		Dimensions	sqft	Counted as living area
1	Storage	9'3" x 4'10"	46 sq. ft	No
2	Basement	21'4" x 5'9"	122 sq. ft	No
3	Bath	11'5" x 10'9"	123 sq. ft	Yes
4	Room	10'3" x 9'8"	100 sq. ft	No
5	Exercise Room	11'4" x 8'1"	92 sq. ft	Yes
6	Bedroom	15'11" x 11'5"	182 sq. ft	Yes
7	Storage	11'4" x 7'5"	84 sq. ft	No
8	Storage	21'4" x 12'9"	271 sq. ft	No
9	Recreation Room	12'0" x 31'2"	341 sq. ft	Yes
10	Utility	11'5" x 7'5"	85 sq. ft	No

Home report

24 Farmingdale Crescent, Dewitt, Fruitland, Stoney Creek,
Ontario, Canada, L8G 4H5



Room dimensions

Floor 2 Total sqft: 1950 Living area: 1586

#		Dimensions	sqft	Counted as living area
11	Breakfast Nook	11'5" x 8'0"	94 sq. ft	Yes
12	Hall	11'6" x 8'1"	85 sq. ft	Yes
13	Dining Room	11'8" x 11'2"	130 sq. ft	Yes
14	Bath	8'2" x 8'7"	64 sq. ft	Yes
15	Foyer	9'9" x 15'10"	96 sq. ft	Yes
16	Garage	17'0" x 19'10"	337 sq. ft	No
17	Bedroom	10'8" x 12'8"	132 sq. ft	Yes
18	Living Room	16'10" x 11'2"	180 sq. ft	Yes
19	Kitchen	11'5" x 9'6"	105 sq. ft	Yes
20	Hall	3'2" x 12'6"	42 sq. ft	Yes
21	Laundry	17'2" x 5'2"	78 sq. ft	Yes

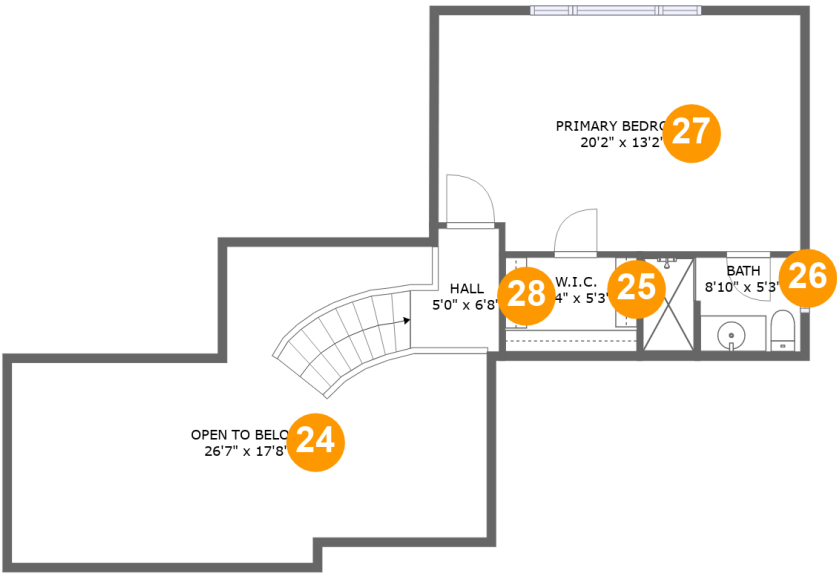
Home report

24 Farmingdale Crescent, Dewitt, Fruitland, Stoney Creek,
Ontario, Canada, L8G 4H5

#		Dimensions	sqft	Counted as living area
22	Family Room	20'4" x 13'3"	270 sq. ft	Yes
23	Bedroom	12'4" x 10'6"	112 sq. ft	Yes

Home report

24 Farmingdale Crescent, Dewitt, Fruitland, Stoney Creek,
Ontario, Canada, L8G 4H5



Room dimensions

Floor 3 Total sqft: 817 Living area: 451

#		Dimensions	sqft	Counted as living area
24	Open To Below	26'7" x 17'8"	325 sq. ft	No
25	W.I.C.	7'4" x 5'3"	39 sq. ft	Yes
26	Bath	8'10" x 5'3"	45 sq. ft	Yes
27	Primary Bedroom	20'2" x 13'2"	261 sq. ft	Yes
28	Hall	5'0" x 6'8"	59 sq. ft	Yes

24 Farmingdale Crescent, Dewitt, Fruitland, Stoney Creek,
Ontario, Canada, L8G 4H5

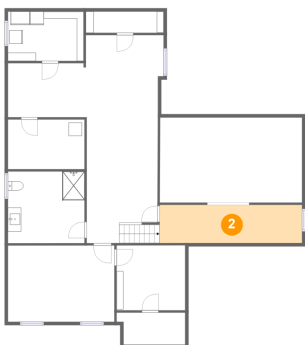
1 Floor 1 - Storage



Dimensions: 9'3" x 4'10"
Area: 46 sq. ft
Counted as living area: No

Heated: No
Finished: No
Enclosed: No
Contiguous: Yes
Permitted: Yes
Wet space: No
Addition: No
Conversion: No

2 Floor 1 - Basement

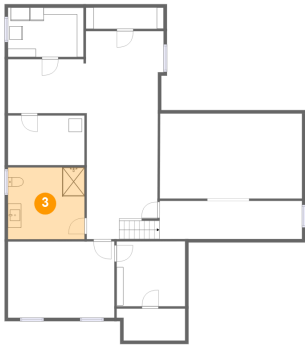


Dimensions: 21'4" x 5'9"
Area: 122 sq. ft
Counted as living area: No

Heated: Yes
Finished: No
Enclosed: Yes
Contiguous: Yes
Permitted: Yes
Wet space: No
Addition: No
Conversion: No

24 Farmingdale Crescent, Dewitt, Fruitland, Stoney Creek,
Ontario, Canada, L8G 4H5

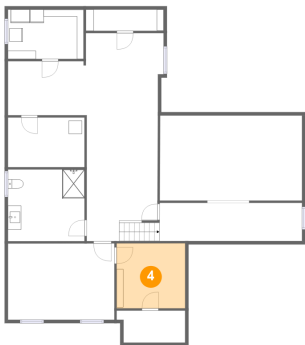
3 Floor 1 - Bath



Dimensions: 11'5" x 10'9"
Area: 123 sq. ft
Counted as living area: Yes

Heated: Yes
Finished: Yes
Enclosed: Yes
Contiguous: Yes
Permitted: Yes
Wet space: Yes
Addition: No
Conversion: No

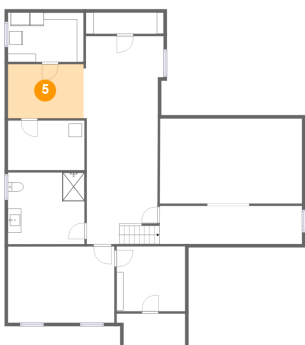
4 Floor 1 - Room



Dimensions: 10'3" x 9'8"
Area: 100 sq. ft
Counted as living area: No

Heated: Yes
Finished: No
Enclosed: Yes
Contiguous: Yes
Permitted: Yes
Wet space: No
Addition: No
Conversion: No

5 Floor 1 - Exercise Room

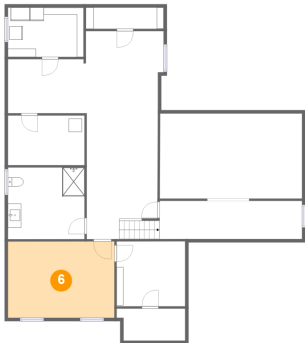


Dimensions: 11'4" x 8'1"
Area: 92 sq. ft
Counted as living area: Yes

Heated: Yes
Finished: Yes
Enclosed: Yes
Contiguous: Yes
Permitted: Yes
Wet space: No
Addition: No
Conversion: No

24 Farmingdale Crescent, Dewitt, Fruitland, Stoney Creek,
Ontario, Canada, L8G 4H5

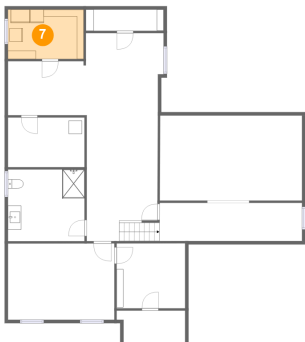
6 Floor 1 - Bedroom



Dimensions: 15'11" x 11'5"
Area: 182 sq. ft
Counted as living area: Yes

Heated: Yes
Finished: Yes
Enclosed: Yes
Contiguous: Yes
Permitted: Yes
Wet space: No
Addition: No
Conversion: No

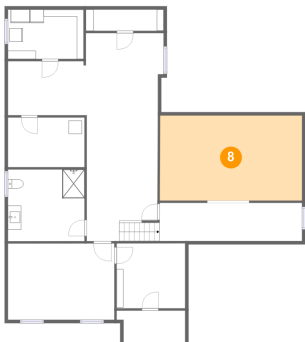
7 Floor 1 - Storage



Dimensions: 11'4" x 7'5"
Area: 84 sq. ft
Counted as living area: No

Heated: No
Finished: No
Enclosed: No
Contiguous: Yes
Permitted: Yes
Wet space: No
Addition: No
Conversion: No

8 Floor 1 - Storage

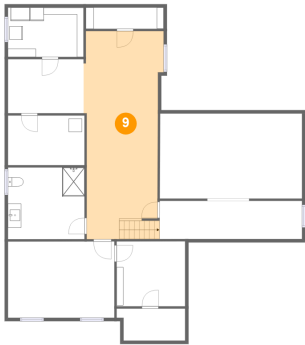


Dimensions: 21'4" x 12'9"
Area: 271 sq. ft
Counted as living area: No

Heated: No
Finished: No
Enclosed: No
Contiguous: Yes
Permitted: Yes
Wet space: No
Addition: No
Conversion: No

24 Farmingdale Crescent, Dewitt, Fruitland, Stoney Creek,
Ontario, Canada, L8G 4H5

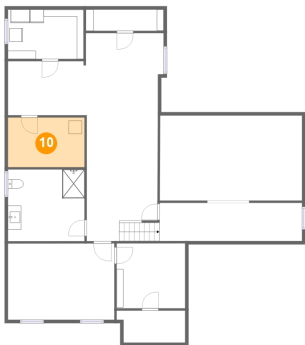
9 Floor 1 - Recreation Room



Dimensions: 12'0" x 31'2"
Area: 341 sq. ft
Counted as living area: Yes

Heated: Yes
Finished: Yes
Enclosed: Yes
Contiguous: Yes
Permitted: Yes
Wet space: No
Addition: No
Conversion: No

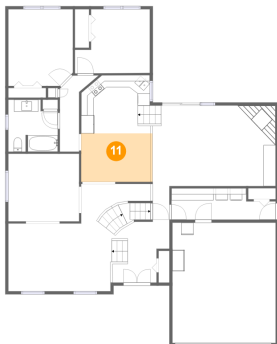
10 Floor 1 - Utility



Dimensions: 11'5" x 7'5"
Area: 85 sq. ft
Counted as living area: No

Heated: Yes
Finished: No
Enclosed: Yes
Contiguous: Yes
Permitted: Yes
Wet space: No
Addition: No
Conversion: No

11 Floor 2 - Breakfast Nook

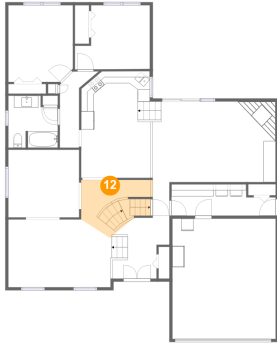


Dimensions: 11'5" x 8'0"
Area: 94 sq. ft
Counted as living area: Yes

Heated: Yes
Finished: Yes
Enclosed: Yes
Contiguous: Yes
Permitted: Yes
Wet space: No
Addition: No
Conversion: No

24 Farmingdale Crescent, Dewitt, Fruitland, Stoney Creek,
Ontario, Canada, L8G 4H5

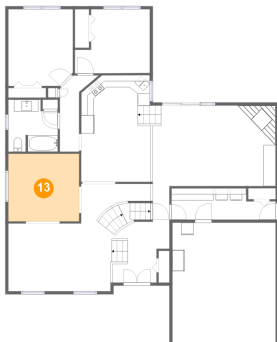
12 Floor 2 - Hall



Dimensions: 11'6" x 8'1"
Area: 85 sq. ft
Counted as living area: Yes

Heated: Yes
Finished: Yes
Enclosed: Yes
Contiguous: Yes
Permitted: Yes
Wet space: No
Addition: No
Conversion: No

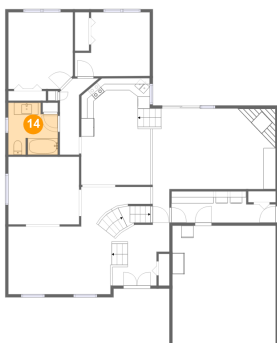
13 Floor 2 - Dining Room



Dimensions: 11'8" x 11'2"
Area: 130 sq. ft
Counted as living area: Yes

Heated: Yes
Finished: Yes
Enclosed: Yes
Contiguous: Yes
Permitted: Yes
Wet space: No
Addition: No
Conversion: No

14 Floor 2 - Bath

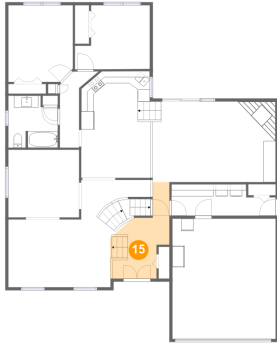


Dimensions: 8'2" x 8'7"
Area: 64 sq. ft
Counted as living area: Yes

Heated: Yes
Finished: Yes
Enclosed: Yes
Contiguous: Yes
Permitted: Yes
Wet space: Yes
Addition: No
Conversion: No

24 Farmingdale Crescent, Dewitt, Fruitland, Stoney Creek,
Ontario, Canada, L8G 4H5

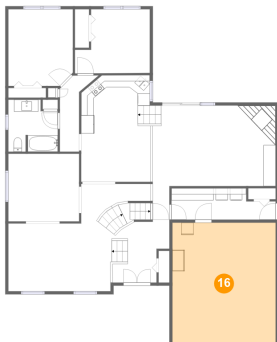
15 Floor 2 - Foyer



Dimensions: 9'9" x 15'10"
Area: 96 sq. ft
Counted as living area: Yes

Heated: Yes
Finished: Yes
Enclosed: Yes
Contiguous: Yes
Permitted: Yes
Wet space: No
Addition: No
Conversion: No

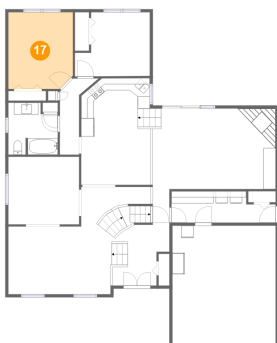
16 Floor 2 - Garage



Dimensions: 17'0" x 19'10"
Area: 337 sq. ft
Counted as living area: No

Heated: No
Finished: No
Enclosed: Yes
Contiguous: Yes
Permitted: Yes
Wet space: No
Addition: No
Conversion: No

17 Floor 2 - Bedroom

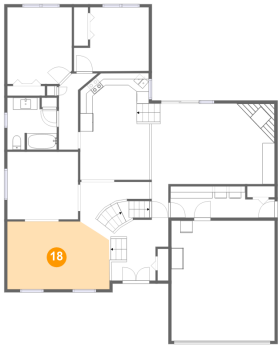


Dimensions: 10'8" x 12'8"
Area: 132 sq. ft
Counted as living area: Yes

Heated: Yes
Finished: Yes
Enclosed: Yes
Contiguous: Yes
Permitted: Yes
Wet space: No
Addition: No
Conversion: No

24 Farmingdale Crescent, Dewitt, Fruitland, Stoney Creek,
Ontario, Canada, L8G 4H5

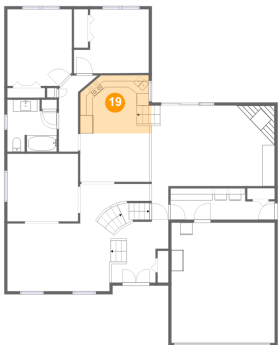
18 Floor 2 - Living Room



Dimensions: 16'10" x 11'2"
Area: 180 sq. ft
Counted as living area: Yes

Heated: Yes
Finished: Yes
Enclosed: Yes
Contiguous: Yes
Permitted: Yes
Wet space: No
Addition: No
Conversion: No

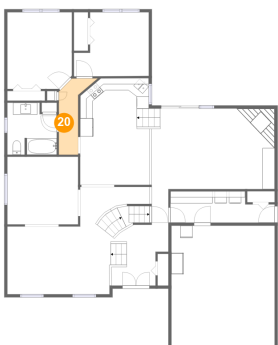
19 Floor 2 - Kitchen



Dimensions: 11'5" x 9'6"
Area: 105 sq. ft
Counted as living area: Yes

Heated: Yes
Finished: Yes
Enclosed: Yes
Contiguous: Yes
Permitted: Yes
Wet space: No
Addition: No
Conversion: No

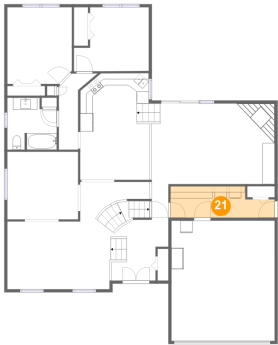
20 Floor 2 - Hall



Dimensions: 3'2" x 12'6"
Area: 42 sq. ft
Counted as living area: Yes

Heated: Yes
Finished: Yes
Enclosed: Yes
Contiguous: Yes
Permitted: Yes
Wet space: No
Addition: No
Conversion: No

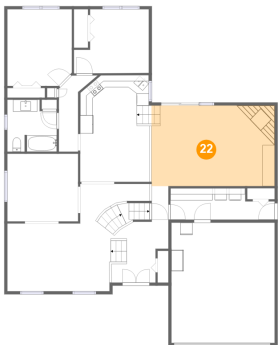
21 Floor 2 - Laundry



Dimensions: 17'2" x 5'2"
Area: 78 sq. ft
Counted as living area: Yes

Heated: Yes
Finished: Yes
Enclosed: Yes
Contiguous: Yes
Permitted: Yes
Wet space: No
Addition: No
Conversion: No

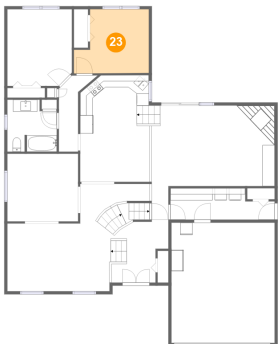
22 Floor 2 - Family Room



Dimensions: 20'4" x 13'3"
Area: 270 sq. ft
Counted as living area: Yes

Heated: Yes
Finished: Yes
Enclosed: Yes
Contiguous: Yes
Permitted: Yes
Wet space: No
Addition: No
Conversion: No

23 Floor 2 - Bedroom

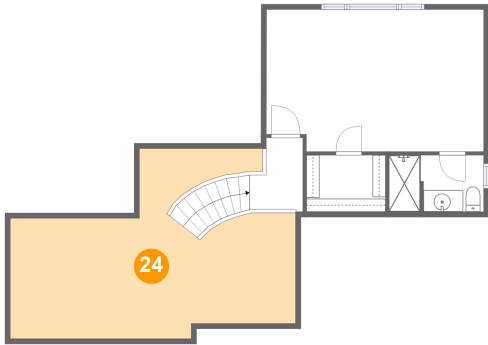


Dimensions: 12'4" x 10'6"
Area: 112 sq. ft
Counted as living area: Yes

Heated: Yes
Finished: Yes
Enclosed: Yes
Contiguous: Yes
Permitted: Yes
Wet space: No
Addition: No
Conversion: No

24 Farmingdale Crescent, Dewitt, Fruitland, Stoney Creek,
Ontario, Canada, L8G 4H5

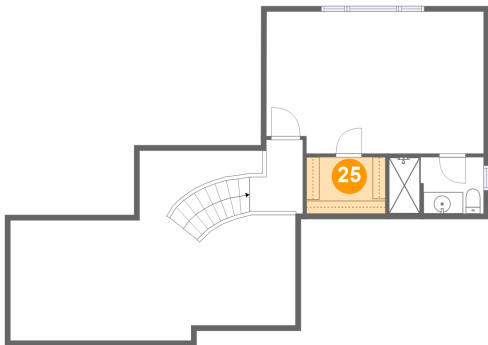
24 Floor 3 - Open To Below



Dimensions: 26'7" x 17'8"
Area: 325 sq. ft
Counted as living area: No

Heated: No
Finished: No
Enclosed: No
Contiguous: Yes
Permitted: No
Wet space: No
Addition: No
Conversion: No

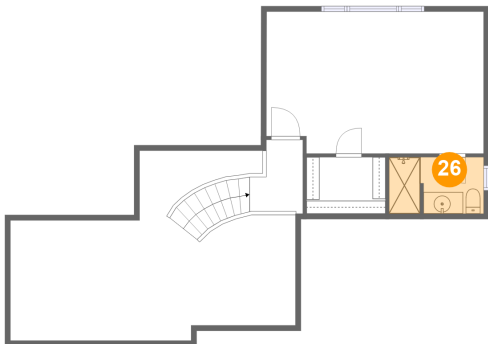
25 Floor 3 - W.I.C.



Dimensions: 7'4" x 5'3"
Area: 39 sq. ft
Counted as living area: Yes

Heated: Yes
Finished: Yes
Enclosed: Yes
Contiguous: Yes
Permitted: Yes
Wet space: No
Addition: No
Conversion: No

26 Floor 3 - Bath

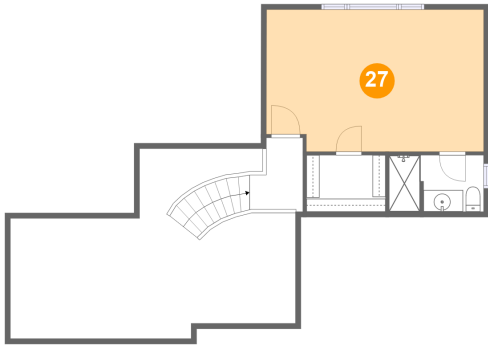


Dimensions: 8'10" x 5'3"
Area: 45 sq. ft
Counted as living area: Yes

Heated: Yes
Finished: Yes
Enclosed: Yes
Contiguous: Yes
Permitted: Yes
Wet space: Yes
Addition: No
Conversion: No

24 Farmingdale Crescent, Dewitt, Fruitland, Stoney Creek,
Ontario, Canada, L8G 4H5

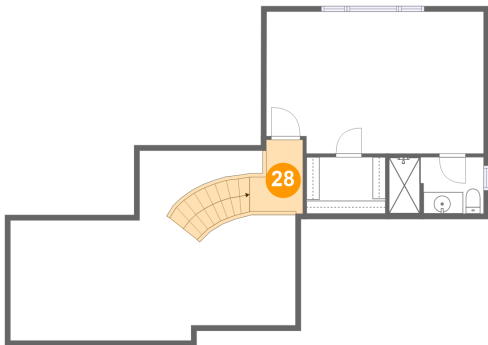
27 Floor 3 - Primary Bedroom



Dimensions: 20'2" x 13'2"
Area: 261 sq. ft
Counted as living area: Yes

Heated: Yes
Finished: Yes
Enclosed: Yes
Contiguous: Yes
Permitted: Yes
Wet space: No
Addition: No
Conversion: No

28 Floor 3 - Hall



Dimensions: 5'0" x 6'8"
Area: 59 sq. ft
Counted as living area: Yes

Heated: Yes
Finished: Yes
Enclosed: Yes
Contiguous: Yes
Permitted: Yes
Wet space: No
Addition: No
Conversion: No