

USER MANUAL

Fingerprint Door Lock

TEMPLATE

1 FOLD HERE ON DOOR EDGE



3 MARK FOR 1-3/4" (45mm) DOOR



MARK FOR 1-3/8" (35mm) DOOR

4 THEN DRILL 1" (25mm) HOLE IN CENTER DOOR OF 2" (50mm) IN DEPTH

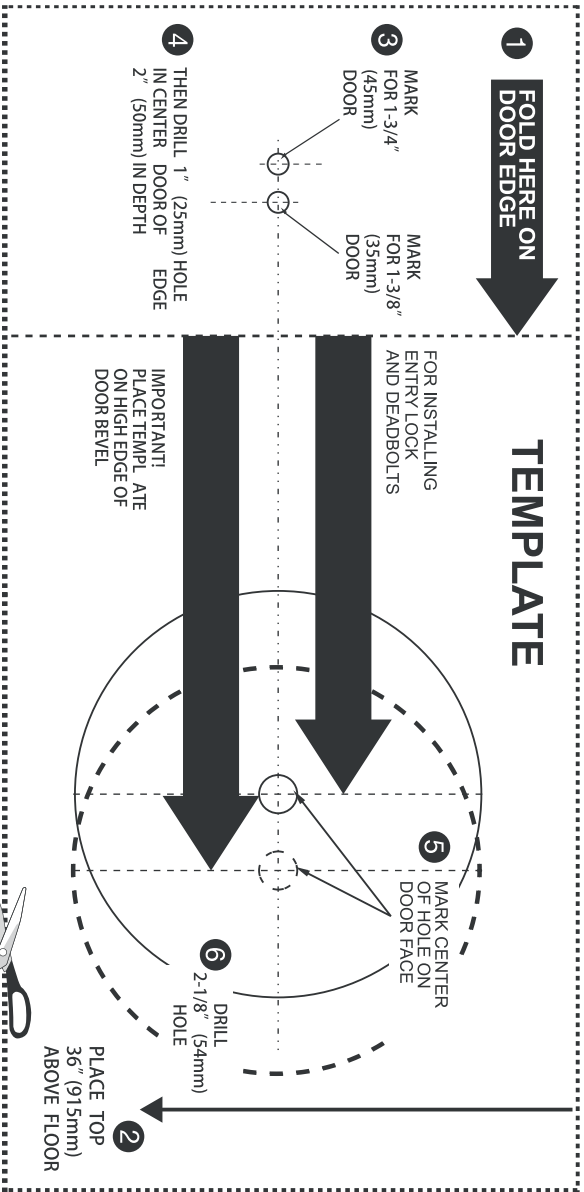
IMPORTANT! PLACE TEMPLATE ON HIGH EDGE OF DOOR BEVEL

FOR INSTALLING ENTRY LOCK AND DEADBOLTS

5 MARK CENTER OF HOLE ON DOOR FACE

6 DRILL 2-1/8" (54mm) HOLE

2 PLACE TOP 36" (915mm) ABOVE FLOOR



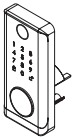
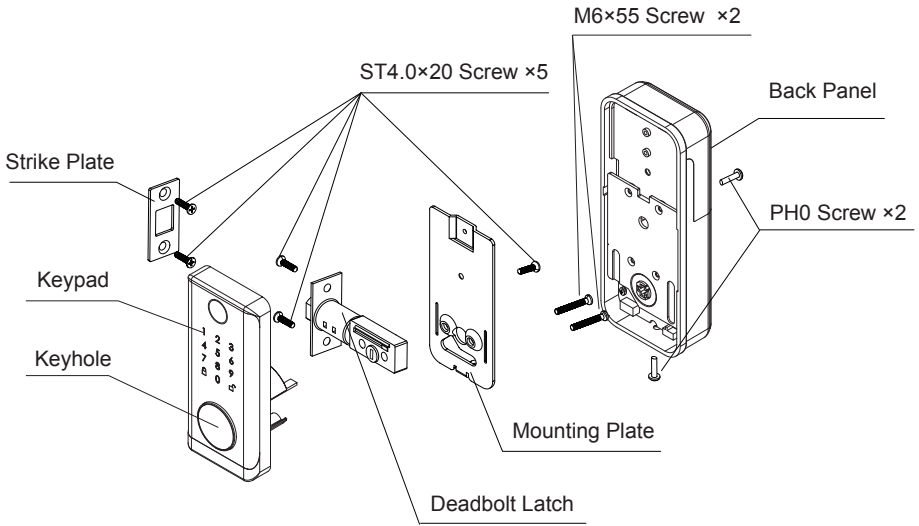
CONTENTS

Technical Parameters	1
Package Contents	2
Product Diagram	3
Installation Instructions	4
Function & Operations	6
1. Description of door lock ID	6
2. Function setting	7
3. Users settings	8
4. System settings	9
5. Dual verification settings	10
6. Language selection	11
7. Unlock direction settings	12
8. Auto-lock setting	13
9. Restore factory settings	14
10. Other instructions	15

1 Technical Parameters

Type	Item	Description
Unlock	User capacity	200 pcs (Max of fingerprint + password + card)
	Fingerprint	< 100 pcs
	Password	< 200 pcs
	Card	< 200 pcs
	Remote control	N/A
	Key	2 Pcs
Power Supply	Operating voltage	4 pcs batteries (5#), 1.5V AA alkaline batteries
	Battery life	Used up to 14,000 times under normal conditions
	Low voltage alarm	≤ 4.8V
	Emergency	5V Type C USB
Power	Static power	≤ 85uA
	Dynamic power	≤500mA
Fingerprint collection	Collection	112°96
	Respect	508DPI
	Entry Time	< 100ms
	Operating temperature	-25°-70°
	Humidity	20%-95%
	FRR	<5%
	FAR	<0.001%
	Type	Semiconductor
Comparison	1:1<450ms	
Accessibility	Records	32 Pcs (Cache)
Lock body parameters	Lock body	
	Center distance	60/70mm (US)
	Weight	190g
N.W.	Panel assembly + lock body	Around 0.9kg
Implementation standards		
Hardware	OLED screen	
	Voice	Voice prompts
Installation	Door thickness	35-55m m
Network	Network	WiFi
	APP	Tuya

2 Package Contents



Front Panel



Back Panel



Mounting Plate



Lock Shell



Strike Plate



Deadbolt Latch



ST4.0×20 Screw ×5



PH0 Screw ×2

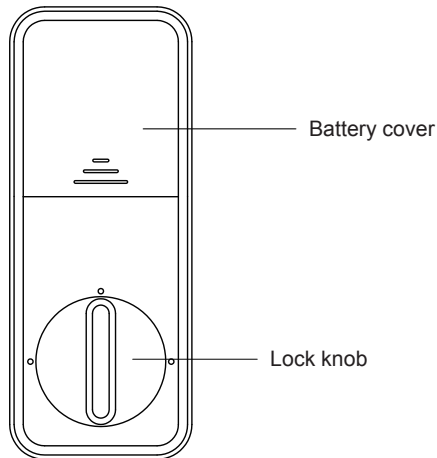
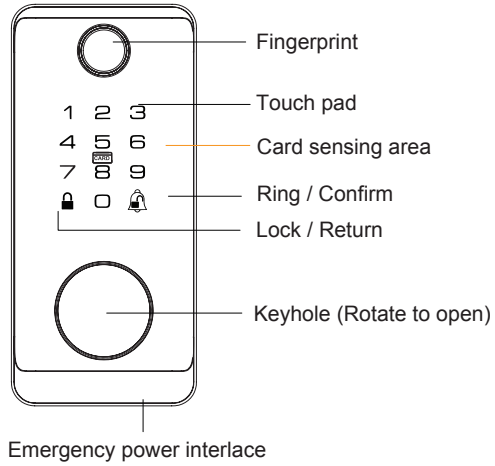


M6×55 Screw ×2



IC Card ×2 Key ×2

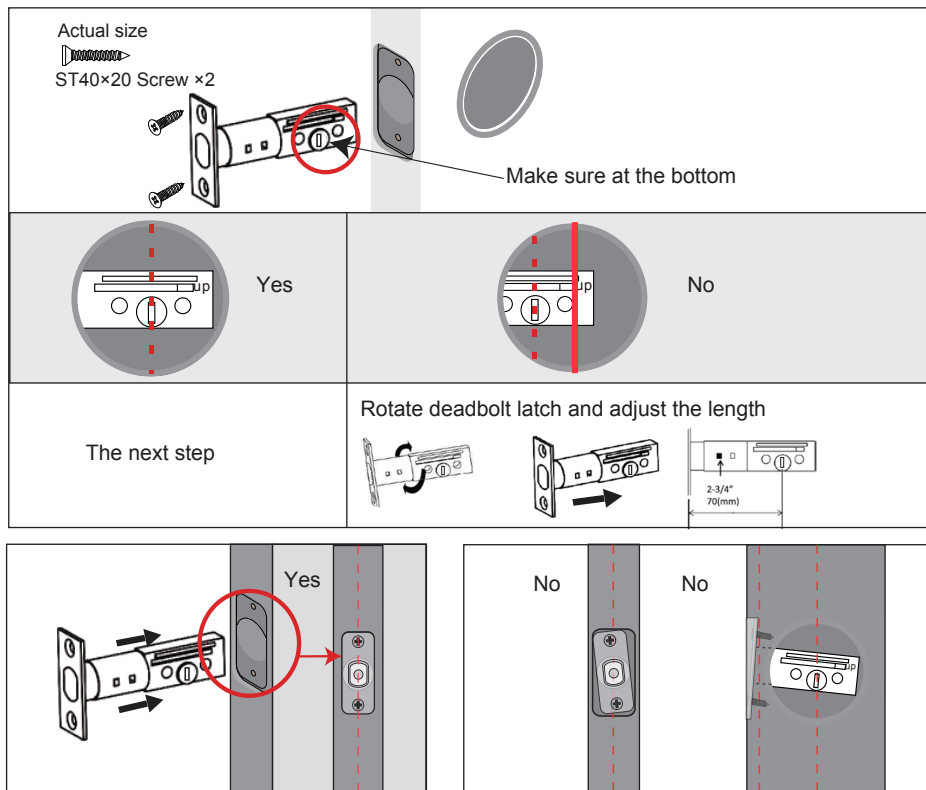
3 Product Diagram



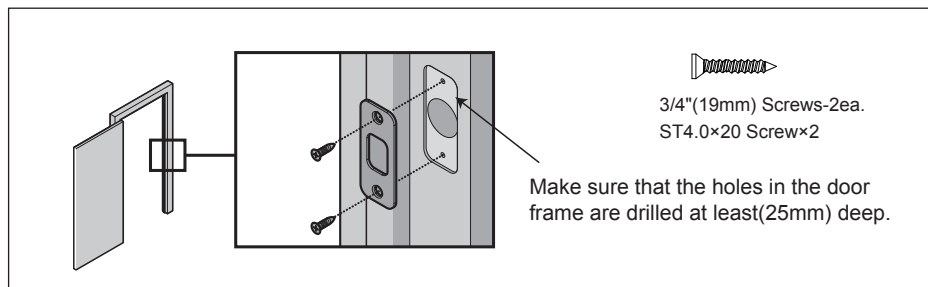
4 Installation Instructions

Picture version

1. Insert deadbolt latch into door holes.

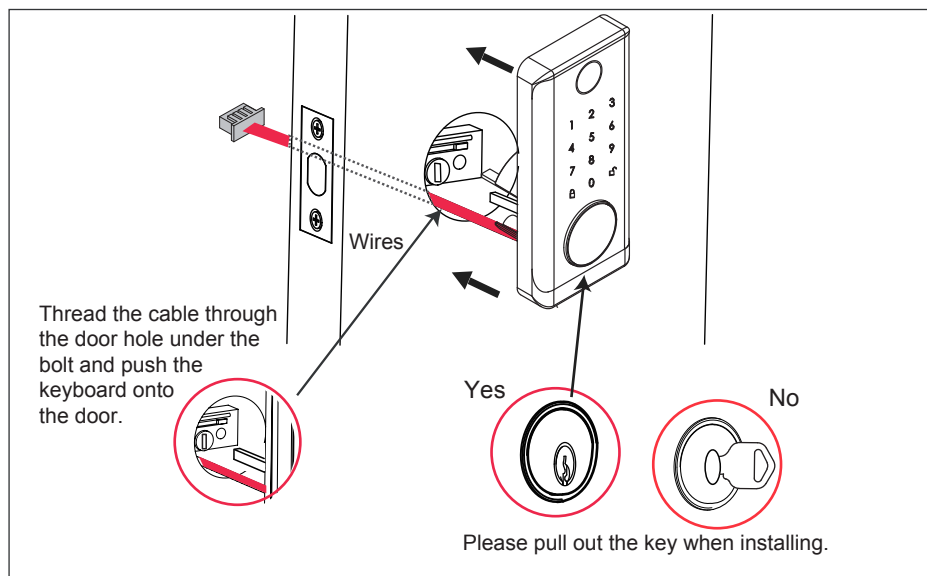


2. Positioning plate and lock shell are installed on the door frame.

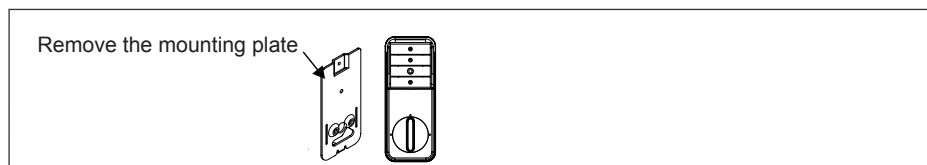


4 Installation Instructions

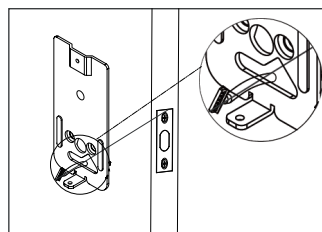
3. Installing front plate.



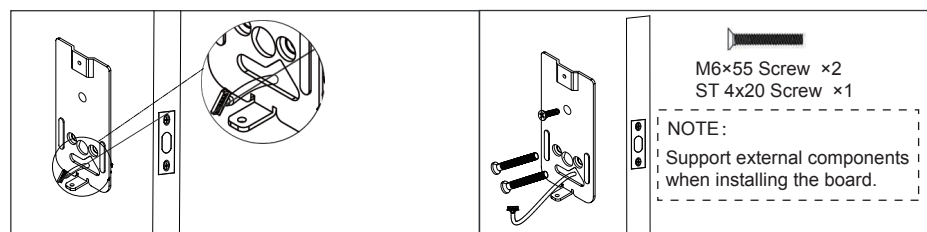
4. Remove the mounting plate.



5. Thread the cable through the bottom of the mounting plate.

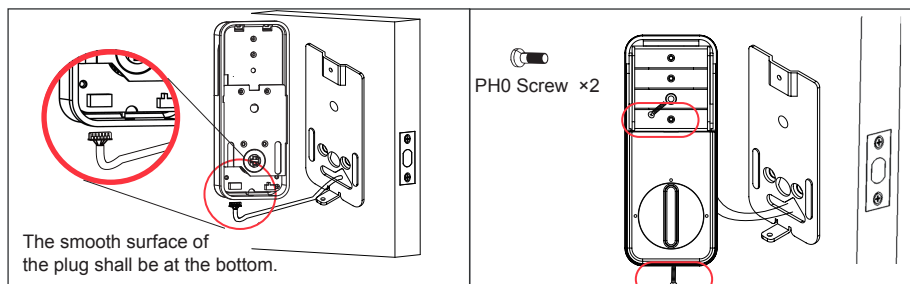


6. Tighten the screws.



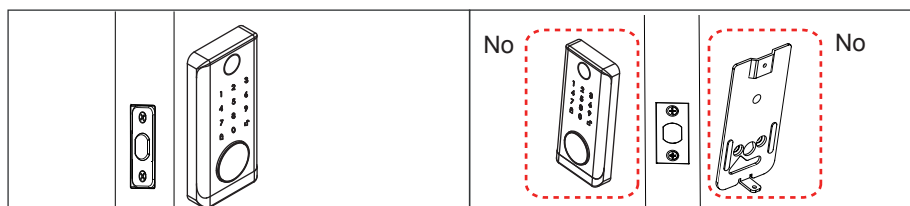
4 Installation Instructions

7. Ensure that the cable is closely connected. 8. Tighten the screws.



9. Insert the key and test the lock.
If the lock does not extend or retract,
adjust the screws on the mounting plate.

10. If the mounting plate and keyboard
are deflected, loosen the mounting plate
screws and adjust the mounting plate.



5 Function & Operations

1. Description of door lock ID

(1) Default password is 123456, the password is invalid after entering a new administrator password.

(2) User roles

- A. Each password corresponds to an ID number.
- B. 200 groups of passwords shared by fingerprints, passwords, and IC cards.
- C. The length of the password is 6-8 digits.



Note:
Please touch to wake up
the keyboard before use.

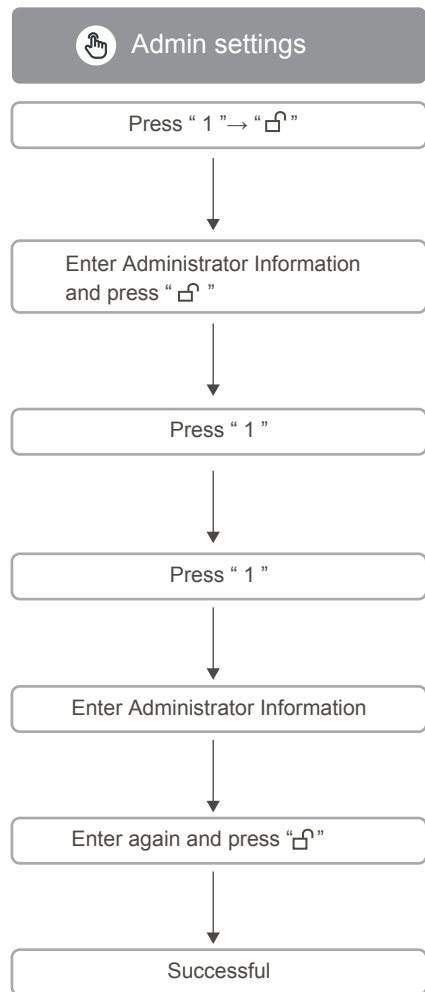
5 Function & Operations

Role name	Password type	ID number
Administrator	Fingerprint / Password / IC card	001-010
Normal user	Fingerprint / Password / IC card	011-200

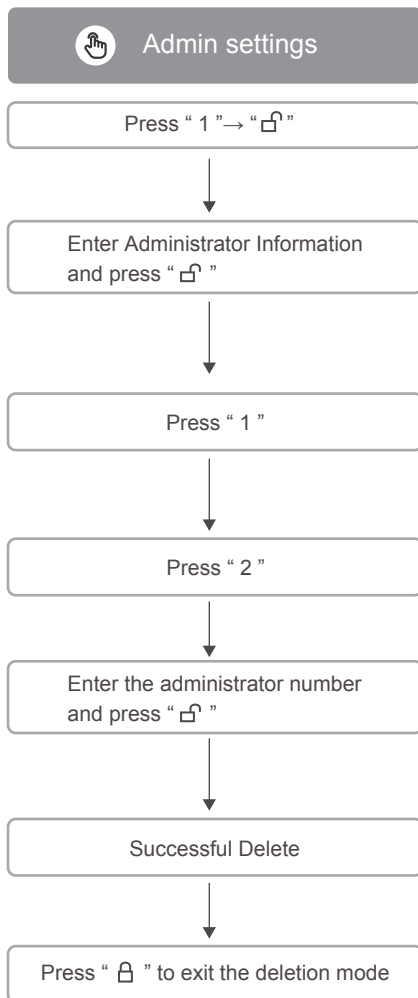
The administrator password has more privileges than the normal user.

2. Function setting

A. Adding Administrator



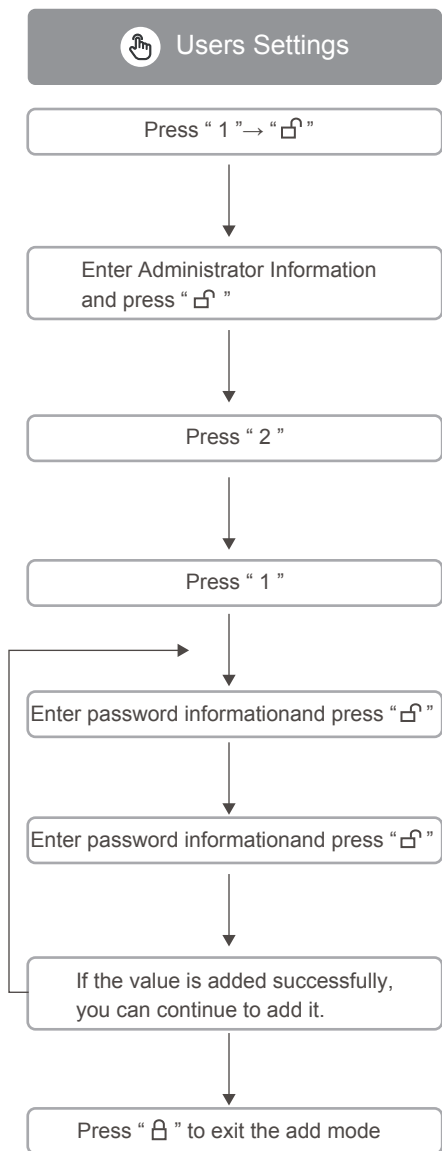
B. Delete Administrator



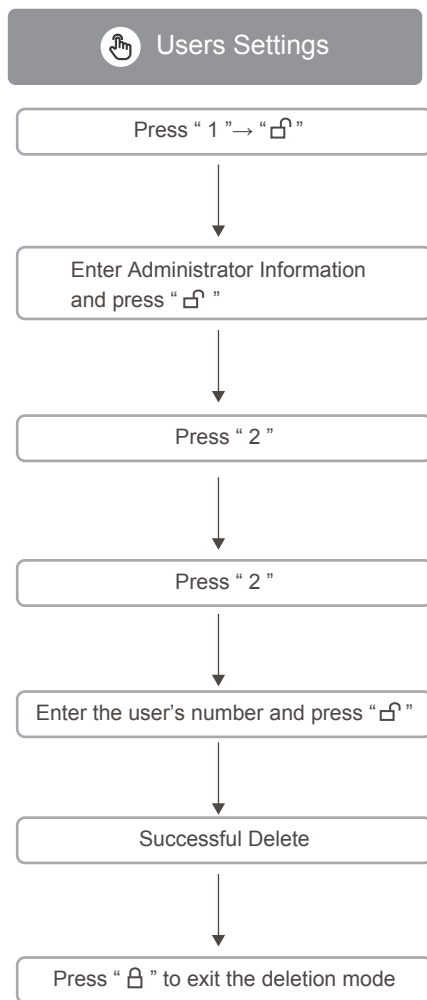
5 Function & Operations

3. Users settings

A. Adding Users



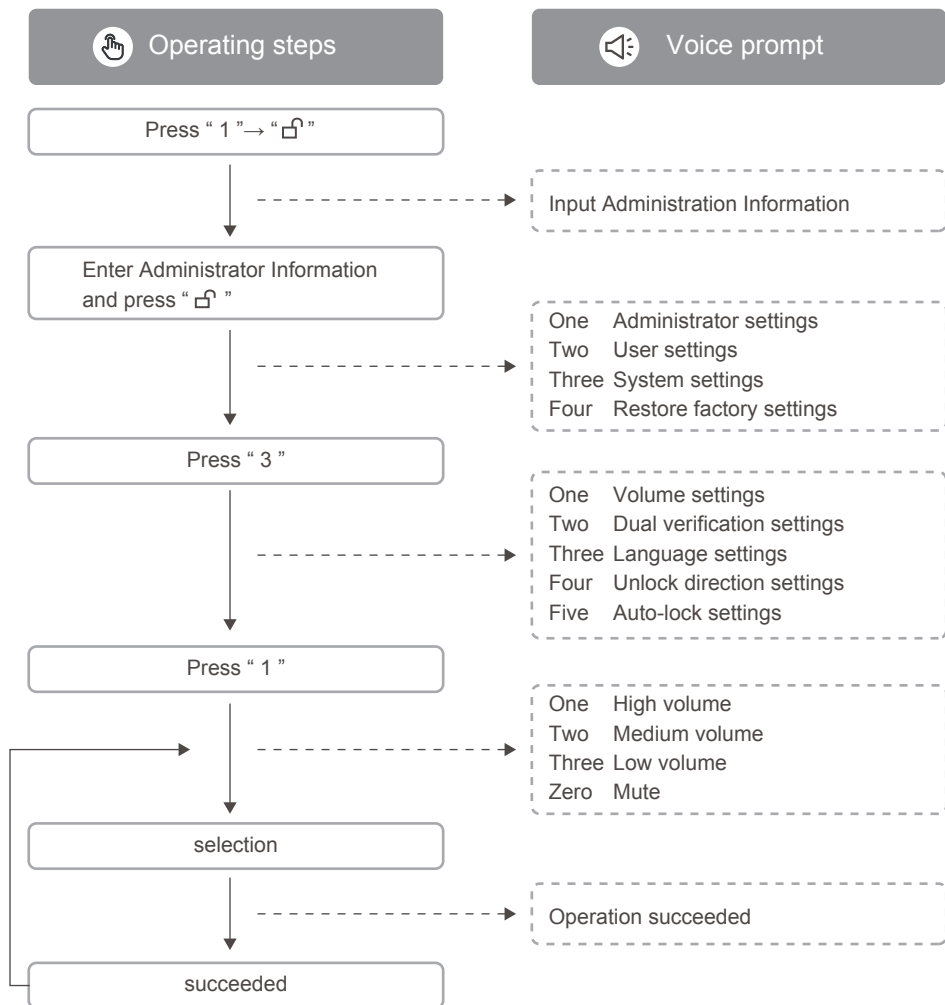
B. Delete Users



5 Function & Operations

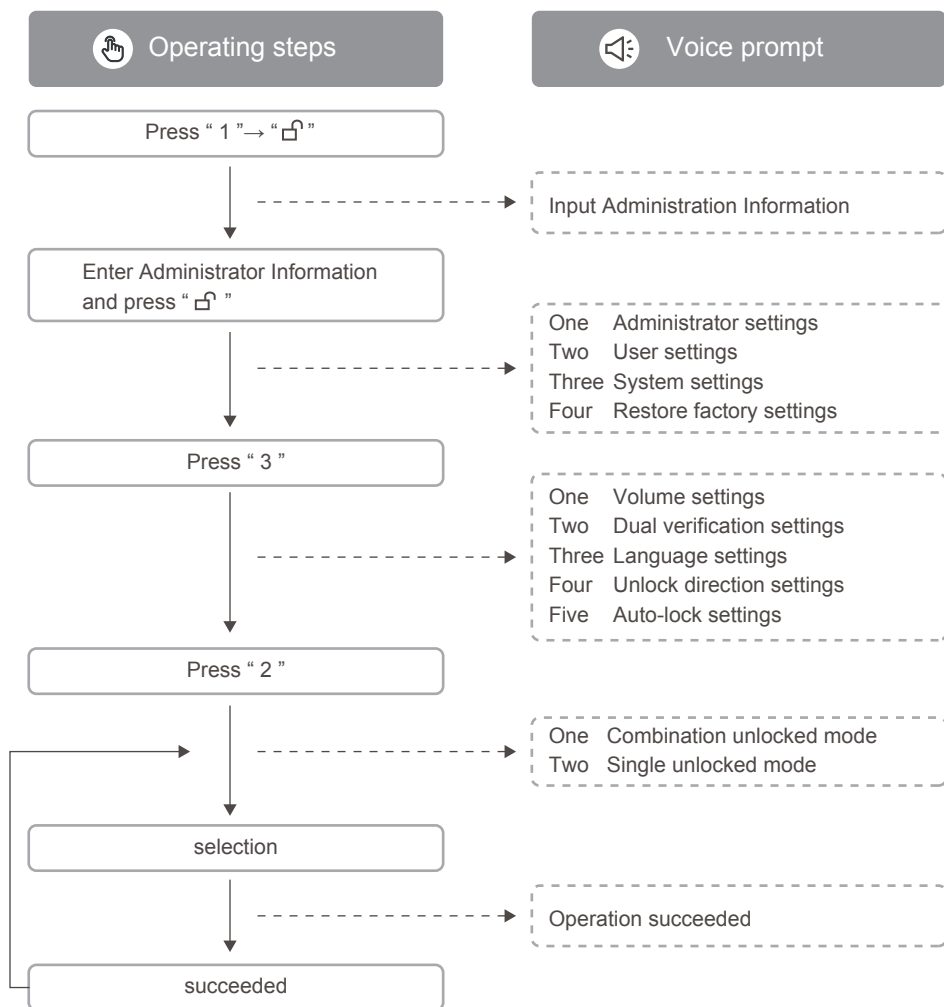
4. System settings

A. Volume settings



5 Function & Operations

5. Dual verification settings



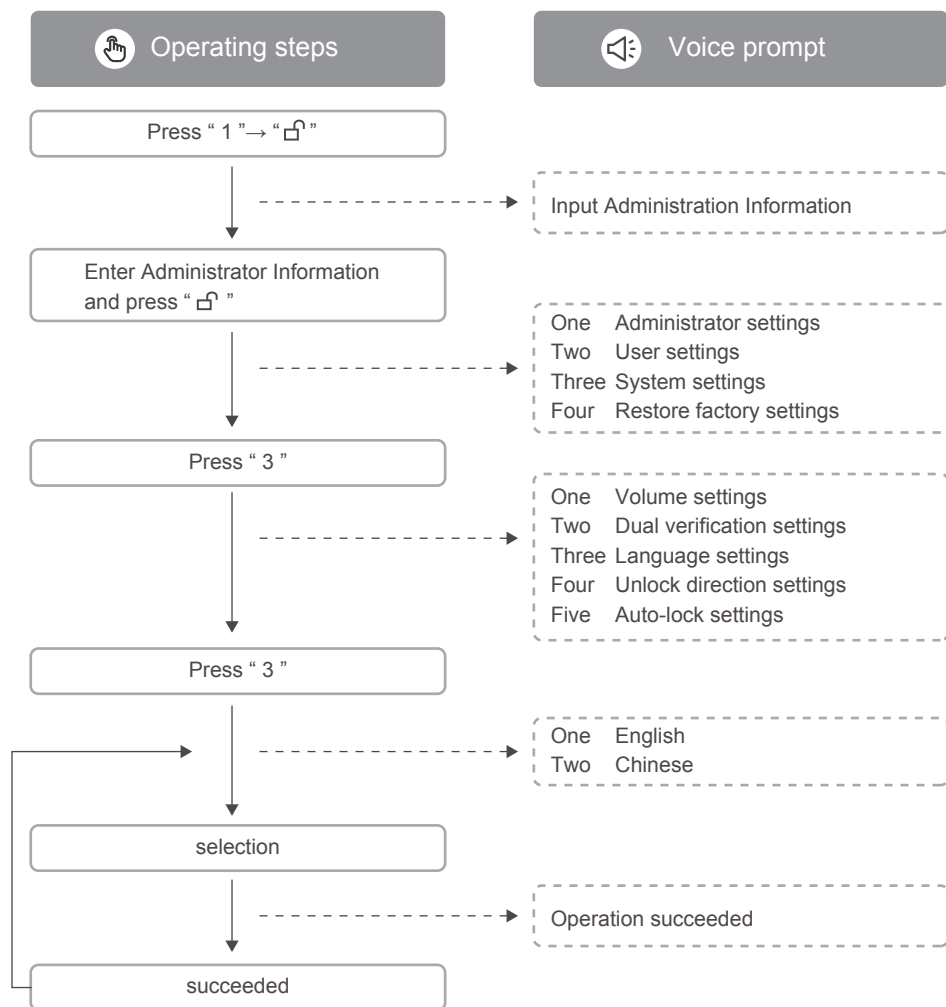
⚠ CAUTION

This function is only available to normal users, nput two types of unlock information (e.g password + password、 fingerprint + password).

Note: this function is only available to normal users.

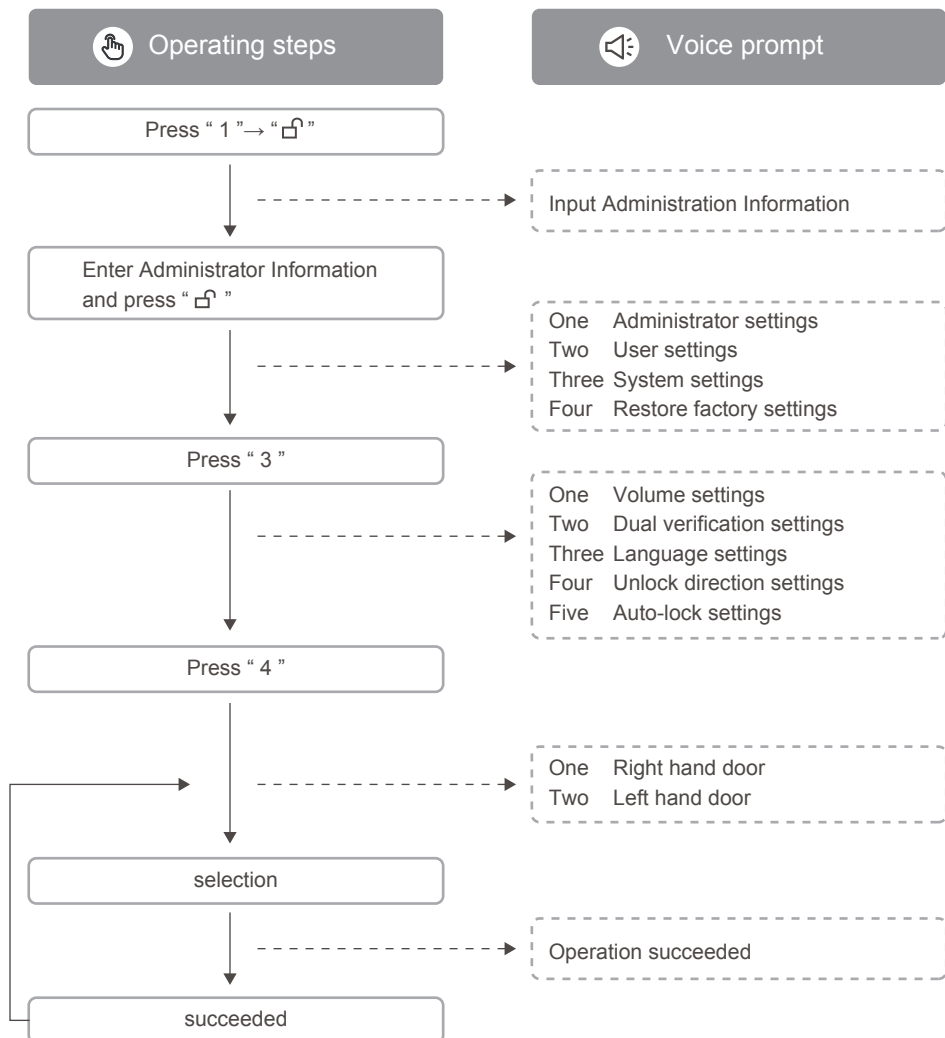
5 Function & Operations

6. Language selection



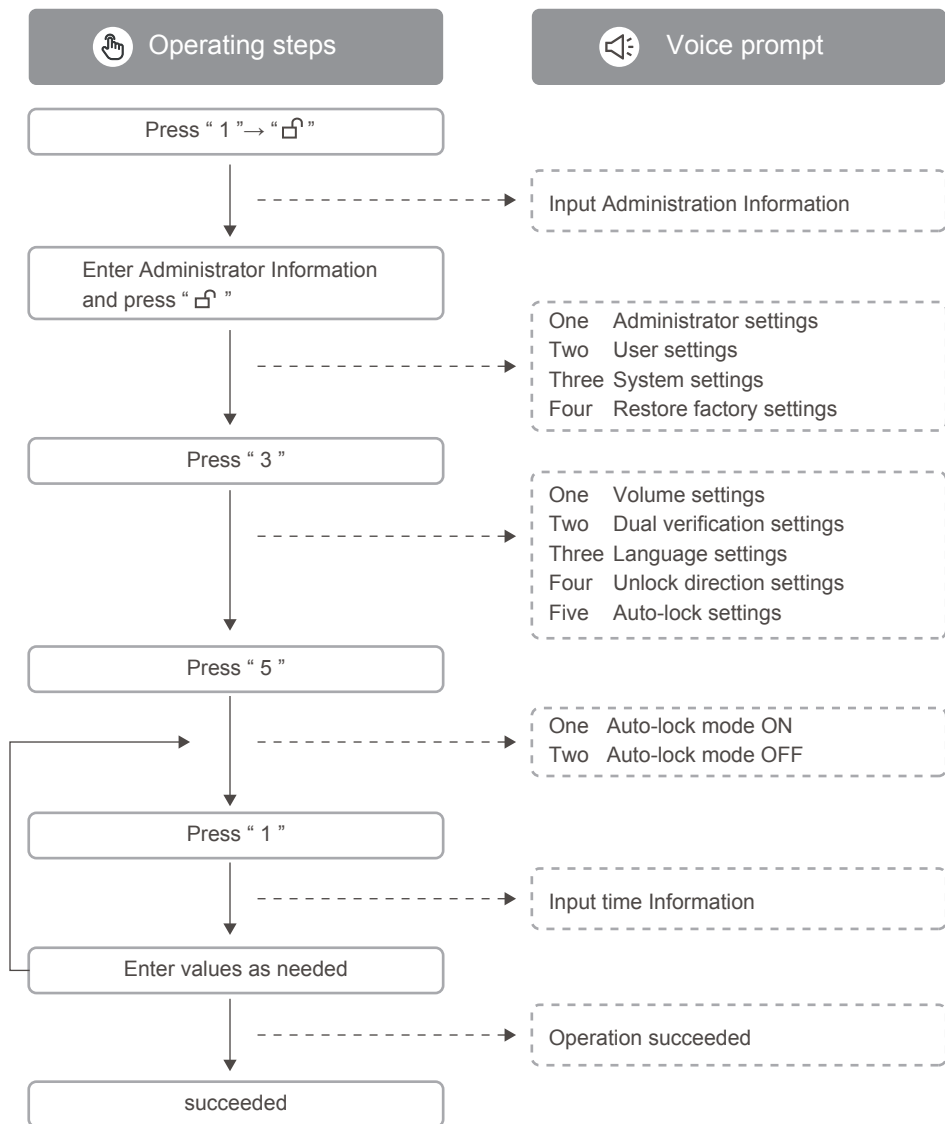
5 Function & Operations

7. Unlock direction settings



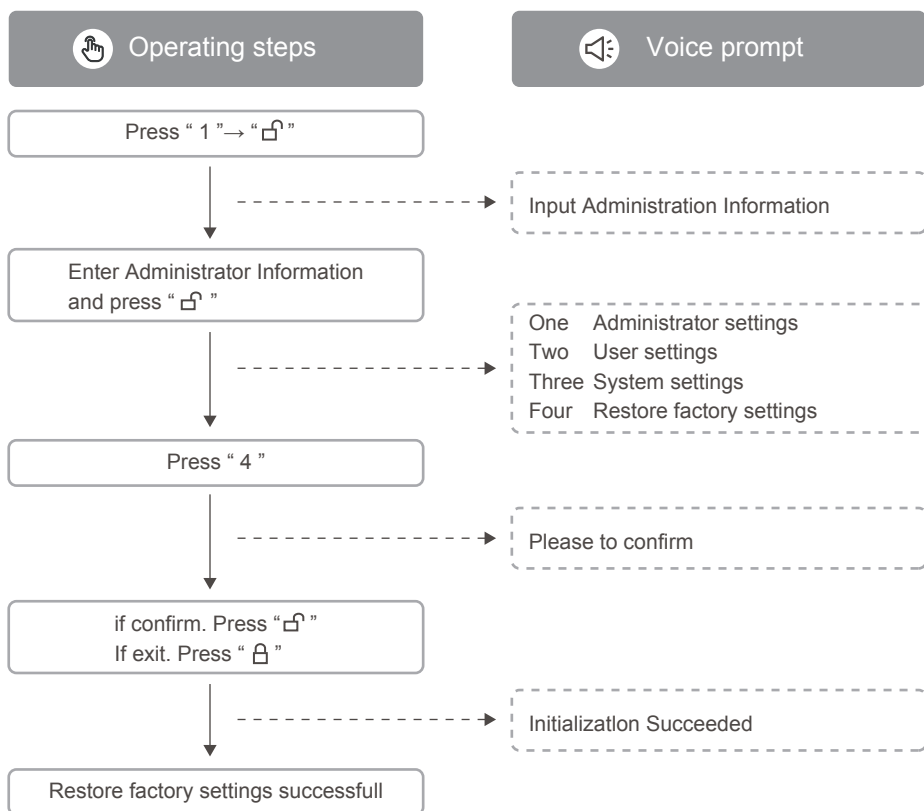
5 Function & Operations

8. Auto-lock setting



5 Function & Operations

9. Restore factory settings



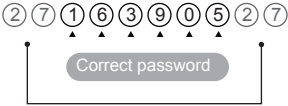
Description:

After successfully restoring the factory settings, the specific information cleared is as follows:

1. All passwords, fingerprints and cards set by the door lock.
2. The settings corresponding to the door lock menu function will be delivered to the default value.

5 Function & Operations

10. Other instructions

Function	Functional description
Anti-peep tech	 <p>Random number</p> <p>Note: Anti-peep password length supported 20 bits</p>
Low battery alarm	When volt is lower than 4.8 V, the lock will automatically alarm (voice broadcast "insufficient power, please replace the battery").
Error alarm	When five times wrong input, the lock will be locked automatically. Please try again after 3 min".
Power supply type	4.8-6.4V
Emergency power supply	Typec - C 5V
Operating temperature	-25°C~70°C
Low voltage alarm voltage	4.8 (-0.2V)

