

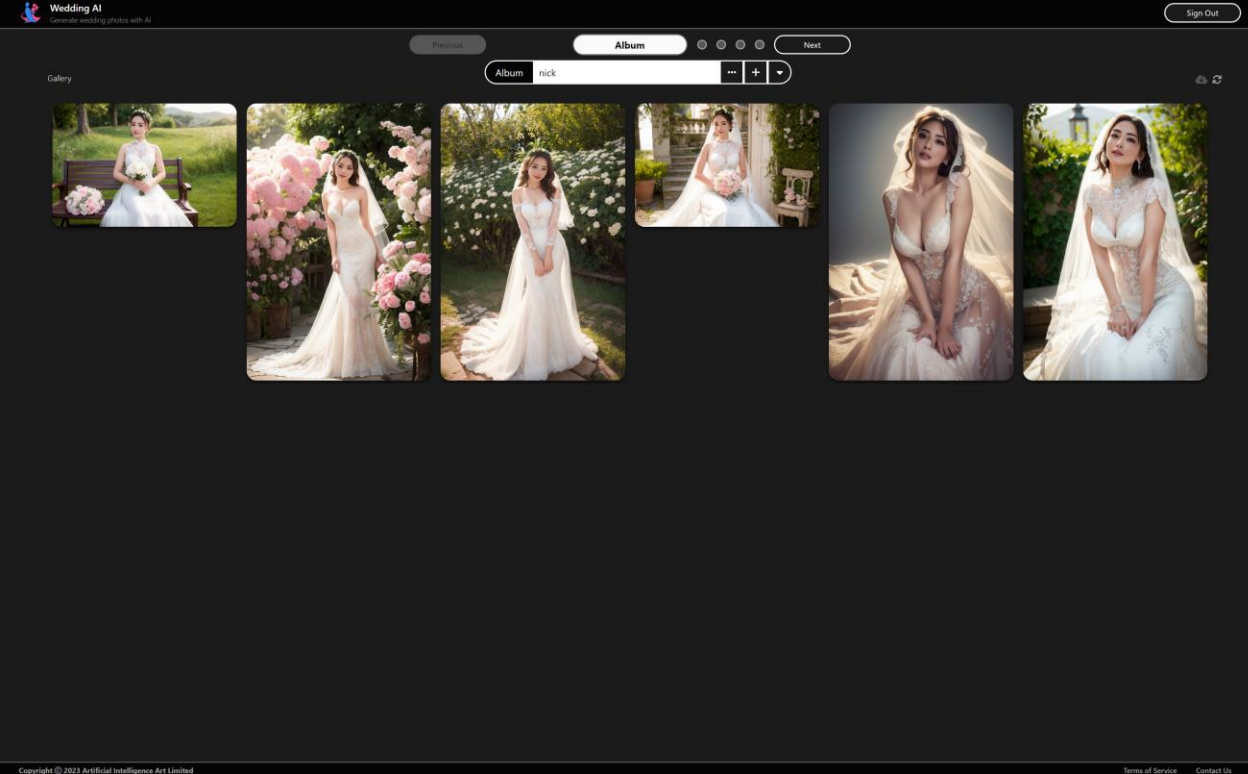
Sign In

Email

Password

Sign In

Login page. Only registered B2B user can access the portal.

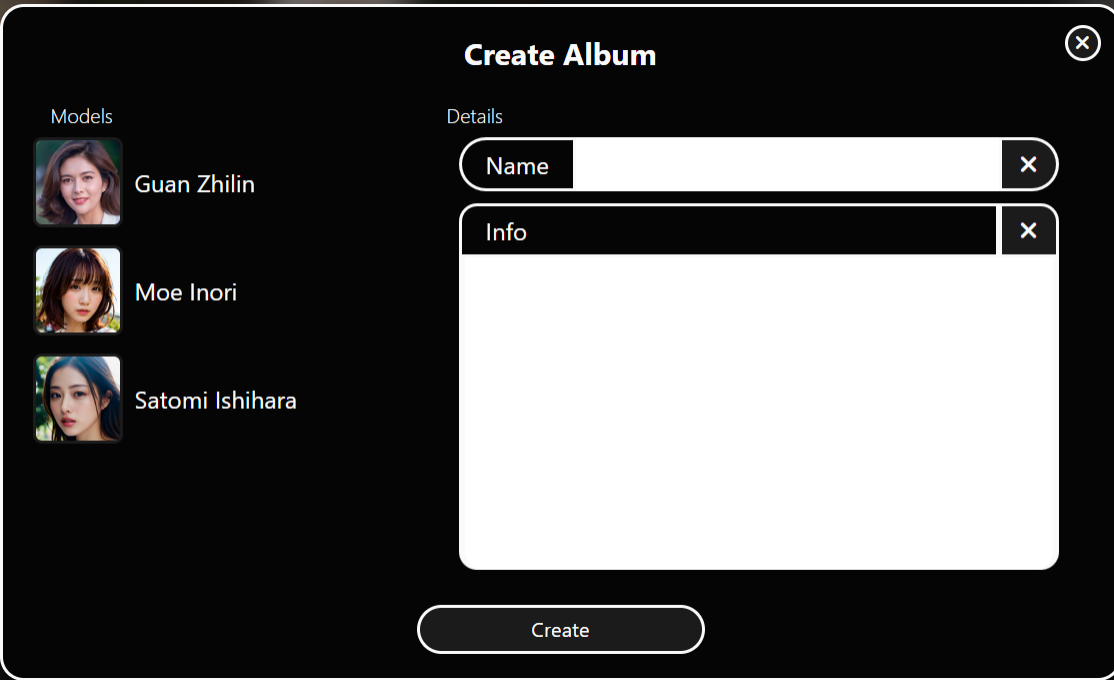


Next: to select the desired style

Sign Out: logout and back to login page

Step 1: Album


User should add or select an album first.
The chosen album content will be shown in gallery area.
User can edit/delete album data at this page.

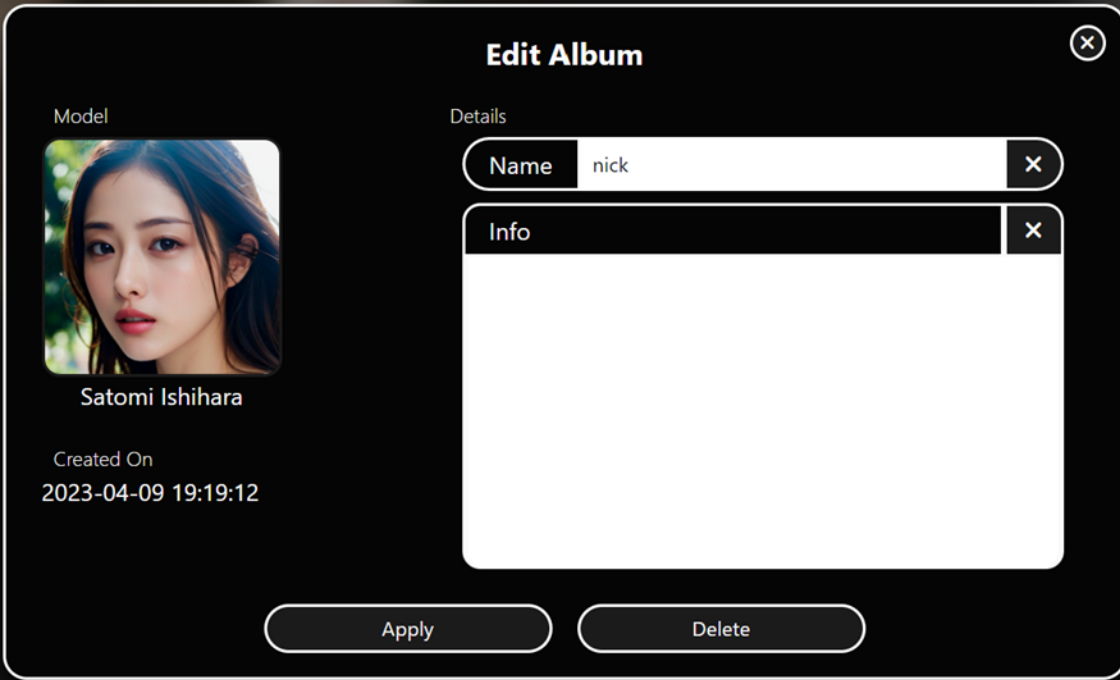


Create: create an album

x: close popup

Album - Create Album

User can create album by press the  button.




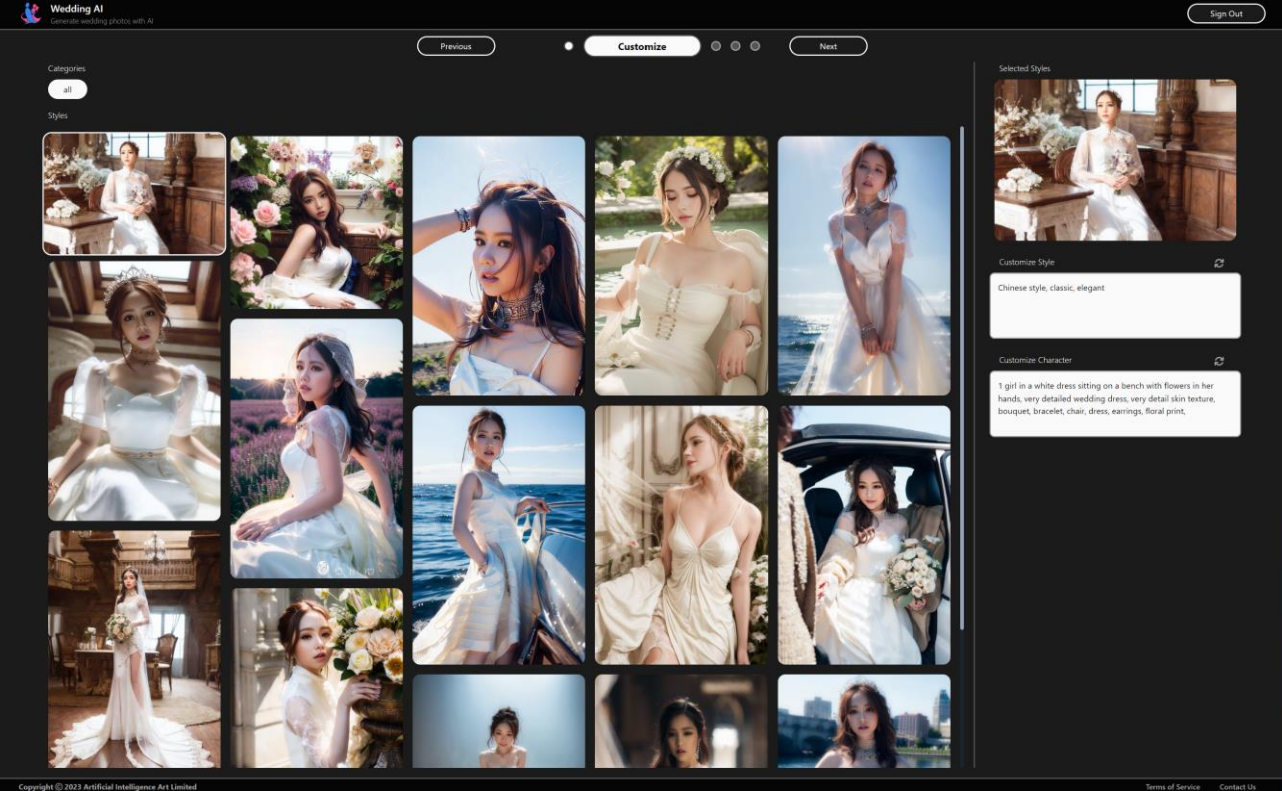
Apply: save changes

Delete: delete this album

x: close popup

Album - Edit Album

User can edit album by pressing  button. Only name and info can be edited.



Previous: to previous step

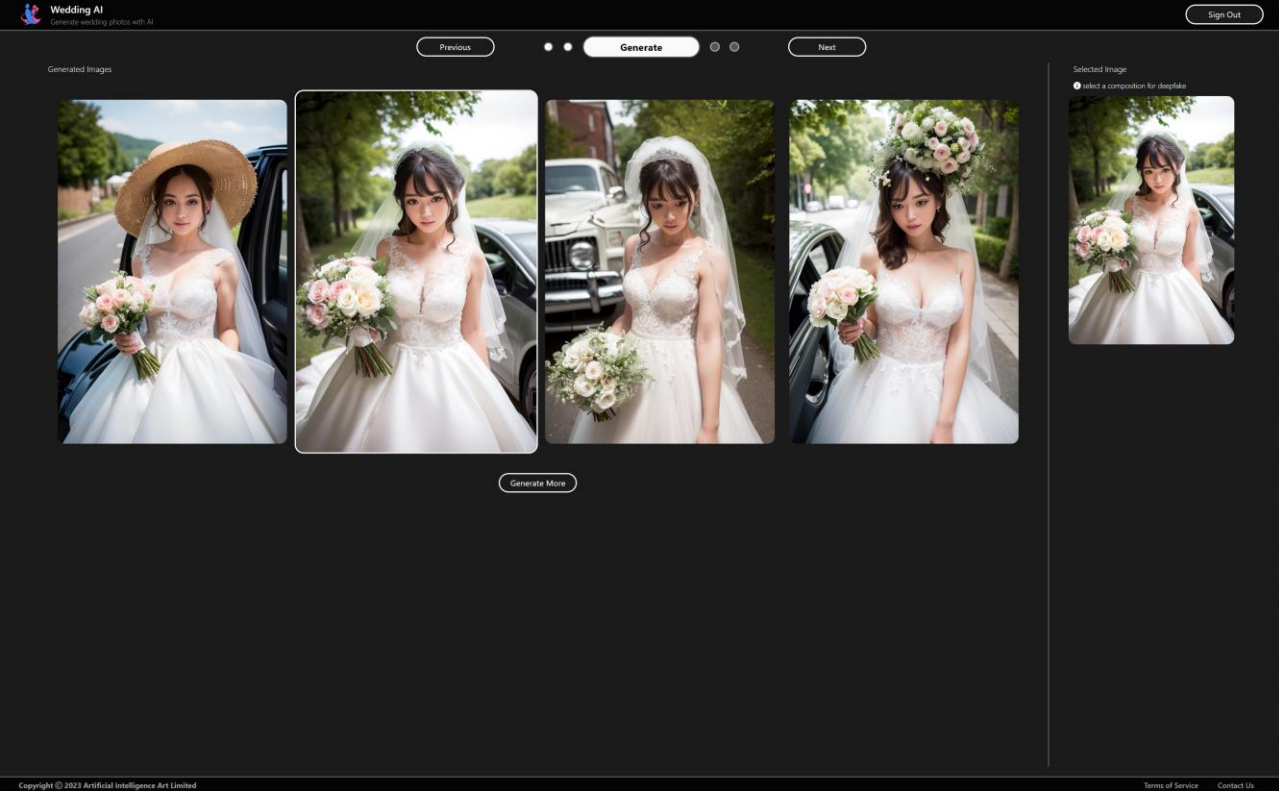
Next: to generate images

Sign Out: logout and back to login page

Step 2: Customize

User can select a photo style from the left side and adjust the style by changing the words/prompts at the right side.

Default words/prompts will be shown when a style is selected. You may leave it as default if you were not familiar with SD prompts.



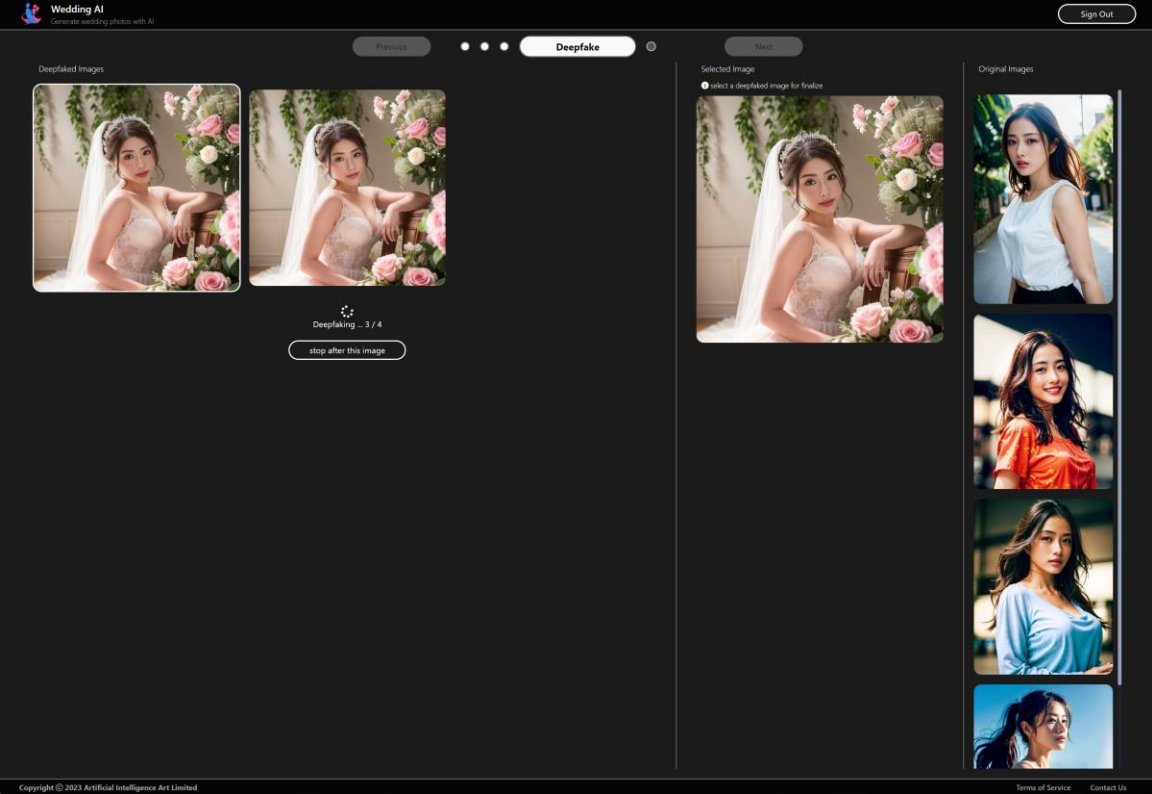
Previous: to
previous step

Next: to
deepfake
processing

Sign Out: logout
and back to
login page

Step 3: Generate

User will get 4 results on the left side and select a desired one to continue. If results were not satisfied, user can press “Generate More” button to generate next 4 results.



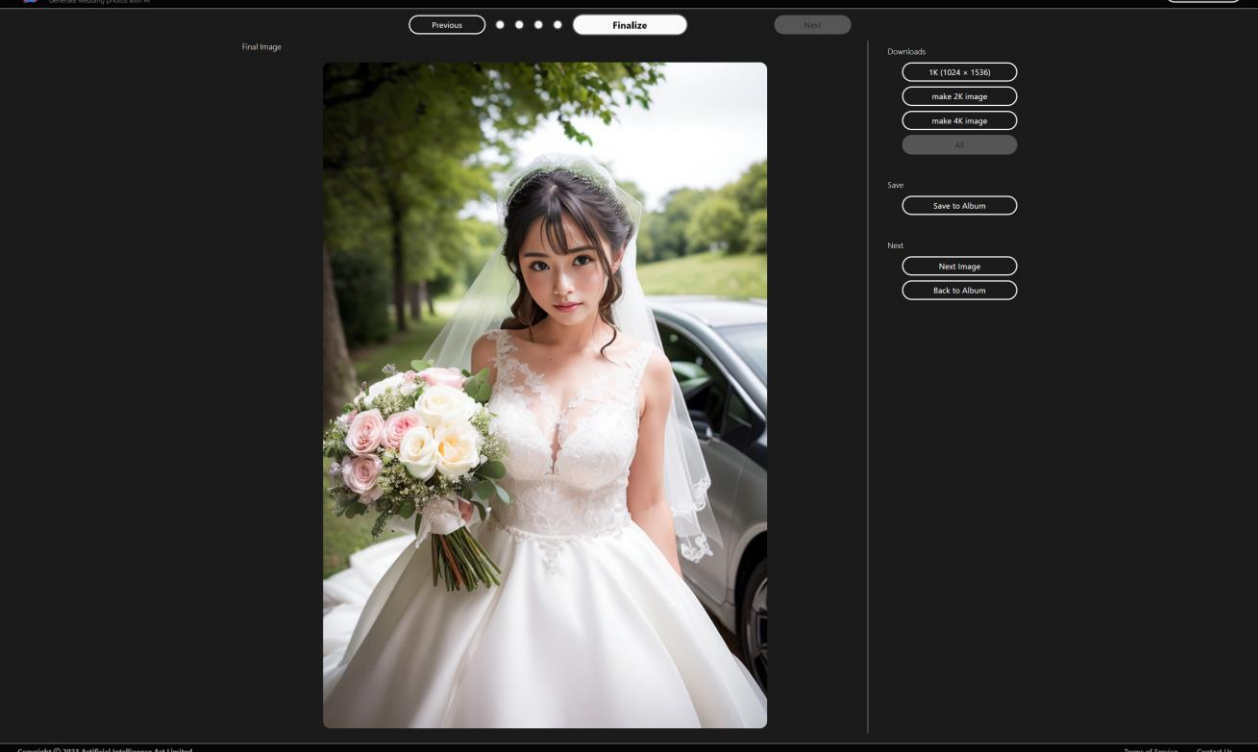
Previous: to previous step

Next: to finalize the results

Sign Out: logout and back to login page

Step 4: Deepfake

User will get 4 results on the left side and select a desired one to continue. If results were not satisfied, user can press "Generate More" button to generate next 4 results. User can compare results with original images.



Previous: to
previous step

Sign Out: logout
and back to
login page

Step 5: Finalize

User can download different scaled images on this page. 1K image generated and press corresponding buttons to generate 2K and 4K images. User can save the image to the Album.