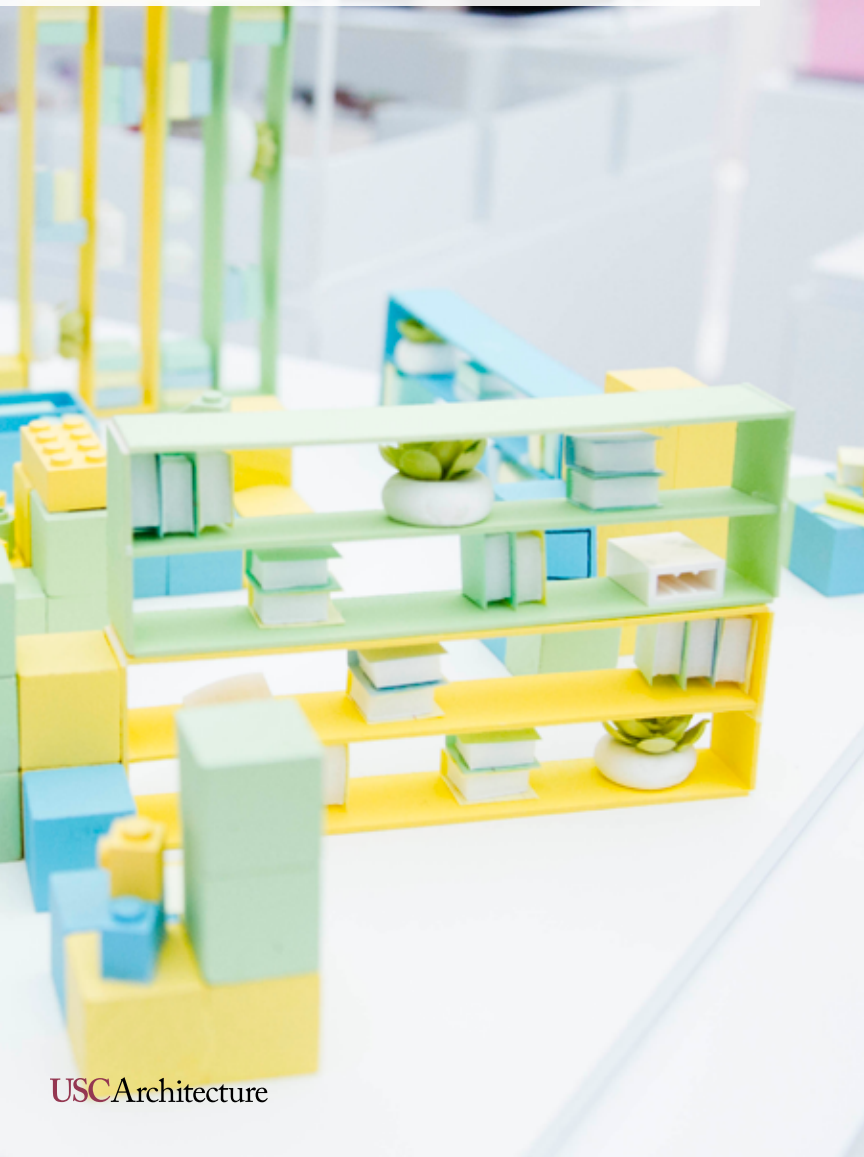


Viewbook





CONTENTS

4	<u>MESSAGE FROM THE DEAN</u> <i>EDUCATING CITIZEN</i> <i>ARCHITECTS</i>
8	<u>ABOUT USC ARCHITECTURE</u>
12	<u>LOS ANGELES</u>
14	<u>FACULTY</u>
16	<u>USC EXPERIENCE</u>
18	<u>GLOBAL STUDIES</u>
20	<u>AFTER GRADUATION</u>
22	<u>PROFESSIONAL DEVELOPMENT</u>
26	<u>RESOURCES & FACILITIES</u>
28	<u>PUBLIC LECTURES &</u> <u>EXHIBITIONS</u>
30	<u>DEGREE PROGRAMS</u>
34	<u>UNDERGRADUATE PROGRAMS</u> STUDENT WORK ADMISSIONS
56	<u>GRADUATE PROGRAMS</u> STUDENT WORK ADMISSIONS
84	<u>HIGH SCHOOL PROGRAM</u>

EDUCATING *CITIZEN* *ARCHITECTS*

What impact do you want to have on the world? That sounds like a simple question, yet it carries enormous meaning. As technology has brought disparate peoples closer together, we still find ourselves atomized by geographic constraints, economic limitations, structural inadequacies, and conflict. Navigating the world and the complexities of identity and space requires a capacious intellect and an imaginative mind.

Our graduates are explorers and citizens of the world. As students, they come from all corners of the globe. They are from diverse backgrounds, races, ethnicities, geographies, and cultures, and they claim identities that are their own. They are Pritzker Prize laureates and AIA Gold Medal recipients—like Paul Williams, Frank Gehry, and Thom Mayne. They are transformational figures in the history and evolution of modernism and urbanization. They are providing new thinking in applied building technologies and leading the preservation of our heritage, cultural infrastructure, and ecologies. They are the emerging voices in the yet unwritten stories of urban revitalization, civic infrastructure, and new forms of housing and commerce.

We celebrate diversity and we practice critical thinking. Our graduates are learning competencies that range in scope from technical skills in designing architecture at all scales; and conceptual precision in articulating ideas and linking design to other discourses, including humanities and social sciences; to representational finesse in using analog, digital, and moving image methods to communicate ideas. Our faculty are driven to explore—from the everyday consequences of architecture and design impacting a community to the experimental realm of theoretical research and speculation. Our curriculum and our connection to the larger USC community means that there are no bounds to your interests.

The opportunity is yours—join us!

— **MILTON S. F. CURRY**
DEAN
DELLA & HARRY MACDONALD DEAN'S
CHAIR IN ARCHITECTURE



ABOUT USC ARCHITECTURE

SINCE OUR
ESTABLISHMENT IN
1919, *THE USC SCHOOL
OF ARCHITECTURE HAS
EXCELLED IN OFFERING
A SOLID FOUNDATION
FOR SUCCESS FOR ALL
OF OUR GRADUATES.*

It is a place where practitioners are created, and where the role of the architect, landscape architect, urban designer, theorist, historian, and technology and science specialist is redefined.



310

GRADUATE STUDENTS

59% FEMALE / 41% MALE

410

UNDERGRADUATE
STUDENTS

58% FEMALE / 42% MALE

Drawing from the dynamic urban environment of Los Angeles, USC Architecture is committed to making a tangible difference in its community and throughout the world. Through a range of programming, and led by purpose-driven faculty and students, USC Architecture fosters a greater understanding of the complexity of our ever-evolving urban landscape. We embrace a multidisciplinary approach that encourages architecture students, scholars, and practitioners to find meaning in their roles as citizens, influencers and advocates across a range of architectural practices, now and into the future.

Beyond offering a preeminent architecture education, we're committed to providing students with dedicated academic advising, wellness services and mentoring opportunities, especially for first-generation college students, ensuring they're thriving in all aspects of their USC Architecture experience.



100
FACULTY

7:1
STUDENT/
FACULTY RATIO

6,650+
ALUMNI

LOS ANGELES

THE UNIVERSITY OF SOUTHERN CALIFORNIA IS A PREMIER RESEARCH INSTITUTION EMBEDDED IN THE DYNAMIC AND EVER-EVOLVING CITY OF LOS ANGELES.

This provides USC Architecture with an unparalleled context for the study of the natural, built and technological environments, as well as opportunities to engage with cultural institutions and events throughout the year.



FACULTY



OUR APPROXIMATELY 100 FACULTY MEMBERS ARE A DIVERSE SPECTRUM OF EXPERTS INSTRUCTING STUDENTS IN STUDIOS AND SEMINARS EACH TERM.

Tenured academicians teach alongside practicing award-winning professionals. Invited visiting faculty and critics are selected from elite schools and design practices from around the world.

RECENT VISITING FACULTY/CRITICS:

Wendell Burnette
Manuel DeLanda
Paffard Keatinge-Clay
Ralph Knowles
Tom Kundig
Mia Lehrer
David Martin
Thomas Phifer
Julie Snow
Trey Trahan
Ma Yansong

USC EXPERIENCE

YOU ARE PART OF THE
TROJAN FAMILY THE
MOMENT YOU BECOME
A STUDENT AT USC.

This prestigious designation joins you to the community of students and faculty and to a network of 375,000 alumni, offering an unsurpassed support system for every student.

This vibrant setting presents numerous opportunities to get involved academically and socially, not only on campus but within the surrounding community and city as well.

With 800 student organizations, you can explore your passions and interests, including recreational sports, student government, religious and multicultural organizations, Greek life, community service opportunities and much more. USC offers students countless opportunities and options to enhance their academic careers. You can pursue degrees from 21 different professional schools and choose from 150 minors—the broadest selection of any U.S. university.

GLOBAL STUDIES

CURRENT PROGRAMS OFFERED

UNDERGRADUATE

FALL PROGRAM IN ASIA Asian Architecture and Landscape Urbanism/Eastern Asia

FALL PROGRAM IN SPAIN Barcelona

SPRING SEMESTER IN ITALY Rome/Como Anthony A. Marnell II Italian Architecture Studies Program

GRADUATE

SUMMER GSAP PROGRAM IN CHINA Beijing, Shanghai, Hong Kong, Shenzhen, Xi'an, Guangzhou

SUMMER GSAP PROGRAM IN FRANCE Paris

THE USC SCHOOL OF ARCHITECTURE OFFERS MULTIPLE STUDY ABROAD OPPORTUNITIES THAT COINCIDE WITH OUR SPECIFIC ARCHITECTURE CURRICULUM.

Offerings change periodically in order to better meet the needs of students and align with the mission of the School's global initiatives.

Students may take advantage of semester-long undergraduate study abroad programs, graduate-level overseas workshops and occasional international and domestic travel opportunities as part of class research and field studies. The School has incorporated exciting travel components into its curriculum to enhance opportunities for global knowledge exchange while keeping students on their academic track.

Other opportunities available to School of Architecture students include traveling fellowships, humanitarian and research traveling opportunities through architecture-affiliated student organizations, and international and domestic internships.



AFTER GRADUATION

Through the ongoing success of so many of our alumni, the School of Architecture has built a well-earned reputation of preparing leaders in our field.

Our degree-curriculum has always been intensive, in-depth and topical, with each program fusing history, theory, technology and design into a variety of degree programs that well-prepare our students for the rigors of the professional design practices. Students are encouraged to engage with prestigious firms and companies through internships, gaining valuable first-hand professional experience. Our connections throughout greater Los Angeles extend beyond student services, assisting graduates with career development and job placement.

Our graduates from these programs are world-renowned as the foremost designers, practitioners and faculty in architecture of yesterday and today. We hold two Pritzker Prize laureates, Frank Gehry and Thom

Mayne, as our alumni, as well as Case Study House Program participants Pierre Koenig, Conrad Buff, Don Hensman and Cal Straub. Paul R. Williams, a graduate of the School, became the first licensed black architect west of the Mississippi. Countless more of our alumni continue to establish themselves as leaders in local and international practices. William Pereira, Mark Lee, Albert Martin, Jon Jerde, Mark Rios, Ronald Altoon and Gerard Furbershaw all established their own local offices after graduating from USC, which quickly grew into practices with worldwide reputations for groundbreaking architecture, landscape architecture and design.

EXTERNSHIP PROGRAM

The USC Architecture Spring Break Externship Program offers eligible undergraduate and graduate students an opportunity to participate in a five-day on-the-job learning experience with an architecture, design, engineering or professional office in Southern California. The program provides support to students as they continue to develop and clarify their professional goals, improve their design skills and hone their professional development skills. Participants of this program will also gain first-hand experience with how the design-build industries are tackling diversity and inclusion as values by which to design a better built environment for all.



ARCHITECTURAL GUILD

Founded in 1958, the USC Architectural Guild provides guidance and insight into real-world experiences for students beyond the classroom. The Guild encourages their alumni and non-alumni members and peers – leaders in architecture, design, construction, engineering, finance, and real estate development – to give back and lead the way in career development and mentorship, scholarship and global fellowship support, and technology and material resources. Through knowledge, networking, and know-how, the Architectural Guild enriches and amplifies the USC education, inspiring architectural students to find purpose, meaning, and fulfillment in their pursuits.

Annually, the Guild raises funds and provides programs for students through activities such as the mentorship program, the Design Charrette, and Career Week. The latter offers professional development workshops and culminates in a Firm Fair where students network and explore opportunities for internships and jobs with top local and national firms.

Viewbook



RESOURCES & FACILITIES

Located in the Harris Hall and Watt Hall complex of buildings and courtyards on the University Park Campus,

THE USC SCHOOL OF ARCHITECTURE COMPRISES OVER 50,000-SQUARE FEET OF DESIGN STUDIOS, CLASSROOMS, GALLERIES, WORKSHOPS, AND LABORATORIES SPECIFICALLY DESIGNED TO OFFER AN IMMERSIVE AND STIMULATING LEARNING ENVIRONMENT.

Each semester, all architecture students are assigned their own design workstations with storage. The University provides continuous wireless support, and students have 24-hour, seven-days-a-week access to their studios and workstations.

The School promotes and supports the use of advanced technology for the study of architecture. Our fabrication workshop provides access to the latest in computer modeling and building design analysis software as well as advanced output technologies, including large-format printers, laser cutting, CNC milling, Kuka robotic arms and 3D printing. Virtual reality equipment is used in classes and can be checked out by students for an immersive dive into projects. Additional facilities include a woodshop for model making, a welding facility and a work yard for constructing large-scale projects.

The Verle Annis Gallery, Helen Lindhurst Gallery, Rosendin Family Atrium, Gin D. Wong, FAIA Conference Center, and Pierre Koenig Lecture Hall provide exhibition, review and lecture space for the School. The Robert H. Timme Architectural Research Center occupies the 22,000-square-foot third floor of Watt Hall, providing studio space for the graduate programs as well as faculty offices, research suites, sky gardens and review spaces.

PUBLIC LECTURES & EXHIBITIONS

THE USC ARCHITECTURE
LECTURE AND EXHIBITION
SERIES HOSTS LEADING
AND EMERGING ARCHITECTS
FROM AROUND THE WORLD
*AND PRESENTS TOPICS
RELATED TO URBANISM,
HERITAGE CONSERVATION,
LANDSCAPE ARCHITECTURE,
BUILDING SCIENCE
AND MORE.*

For decades, the USC Architecture Lecture Series, which includes presentations followed by debates and discussions, has provided a stimulating environment for the exploration of ideas that permeate culture at the school, in Los Angeles and beyond.

Speakers are a mix of new and established designers representing all of the school's disciplines, ensuring students, faculty and guests receive access to a variety of thought-provoking themes and ideas. Notable past speakers have included Pritzker Prize-winning architects Thom Mayne and Zaha Hadid, interdisciplinary artist Olafur Eliasson, MAD Architects founder Ma Yansong, landscape architect Kathryn Gustafson and Snøhetta design firm founder Craig Dykers.

Lectures are typically held on Wednesday evenings in the Gin D. Wong, FAIA Conference Center, Harris Hall. Lectures are free and open to the public, and no reservations are required.

DEGREE PROGRAMS

OUR ACADEMIC PROGRAMS
GIVE STUDENTS NUMEROUS
DEGREE OPTIONS TO BEST
PURSUE THEIR INDIVIDUAL
INTERESTS AND GOALS.

2

DISTINCT
BACHELOR'S
DEGREES

5

DISTINCT
MASTER'S
DEGREES

3

DUAL MASTER'S
DEGREES

5

CERTIFICATE
PROGRAMS

Students complete courses in theory and history alongside hands-on studio courses and fieldwork in robust, interactive learning environments.



NATIONAL ARCHITECTURAL ACCREDITING BOARD STATEMENT

In the United States, most registration boards require a degree from an accredited professional degree program as a prerequisite for licensure. The National Architectural Accrediting Board (NAAB), which is the sole agency authorized to accredit professional degree programs in architecture offered by institutions with U.S. regional accreditation, recognizes three types of degrees: The Bachelor of Architecture, the Master of Architecture, and the Doctor of Architecture. A program may be granted an 8-year, 3-year, or 2-year term of accreditation, depending on the extent of its conformance with established educational standards.

Doctor of Architecture and Master of Architecture degree programs may require a pre-professional undergraduate degree in architecture for admission. However, the pre-professional degree is not, by itself, recognized as an accredited degree.

The University of Southern California School of Architecture offers the following NAAB-accredited degree programs:

BACHELOR OF ARCHITECTURE

160 undergraduate credits

MASTER OF ARCHITECTURE

Pre-professional degree + 64 graduate credits

MASTER OF ARCHITECTURE

Non-pre-professional degree + 102 graduate credits

Next accreditation visit for all programs: 2022

LANDSCAPE ARCHITECTURAL ACCREDITATION BOARD STATEMENT

The three-year first professional degree program in landscape architecture received its initial accreditation in 2011 by the Landscape Architectural Accreditation Board (LAAB). We successfully completed our latest review in November of 2017 and were granted the maximum renewal of six years.

INTEGRATED PATH TO ARCHITECTURAL LICENSURE

The USC School of Architecture participates in the NCARB Integrated Path to Architectural Licensure Initiative (IPAL). IPAL provides support in designated professionally accredited programs with an integrated approach to Architectural Experience Programs and Architectural Registration Exam requirements for licensure. Students can take advantage of increased access to the state and national licensure examinations while enrolled in their accredited professional degree program. IPAL also encourages architectural experience in the professional community, significantly reducing the timeline to become a licensed architect while increasing the interaction between professional and academic experience.

UNDERGRADUATE PROGRAMS



BACHELOR OF ARCHITECTURE

5 Years, 160 Units

Our bachelor's degree program provides a mix of architectural and general university studies throughout the program. The curriculum includes two cycles of development. The first six semesters provide an intensive foundation in understanding architecture and conclude with integrative studies. The final four semesters explore broad aspects of architecture and develop individual strengths and interests. During this period, students undertake a comprehensive design studio project in the fall of the fifth year. The spring of the fifth and final year culminates in the development of that comprehensive building project in the context of a professional practice course, coupled with a research design studio in line with the students' own interests.

Our Bachelor of Architecture First Professional Degree is a STEM-designated program (CIP Code 04.0902). The STEM designation allows international students to be eligible for a 24-month extension of the Optional Practical Training (OPT) period (for a total eligibility of up to 36 months instead of the maximum 12 months of eligibility for non-STEM disciplines).

BACHELOR OF SCIENCE IN ARCHITECTURAL STUDIES

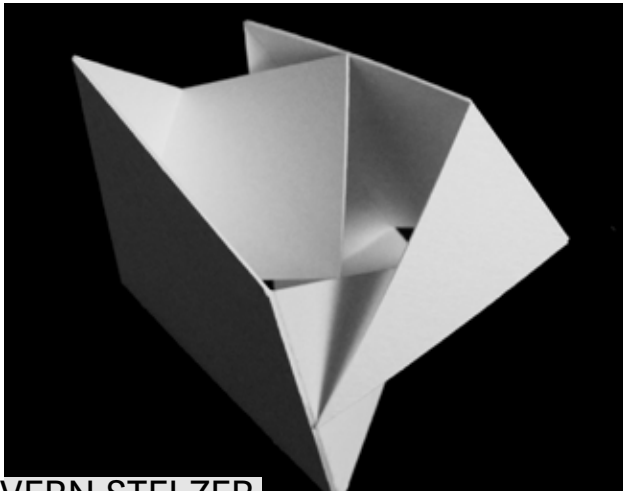
4 Years, 128 Units

The Bachelor of Science in Architectural Studies program also provides a mix of architectural and general university studies throughout the program. The curriculum includes a core program in the first two years identical to the Bachelor of Architecture professional degree program. The last two years provide the opportunity to explore various aspects of architecture and related fields to develop individual strengths and interests. Students take specialization courses in the second year, which provide an introduction to related fields and alternative degree options. Students can move into the four-year non-professional B.S. in Architectural Studies program with a degree plan identifying electives fulfilling an area of concentration. The program concludes with a seminar with all degree candidates, allowing for collaboration on common interest areas.



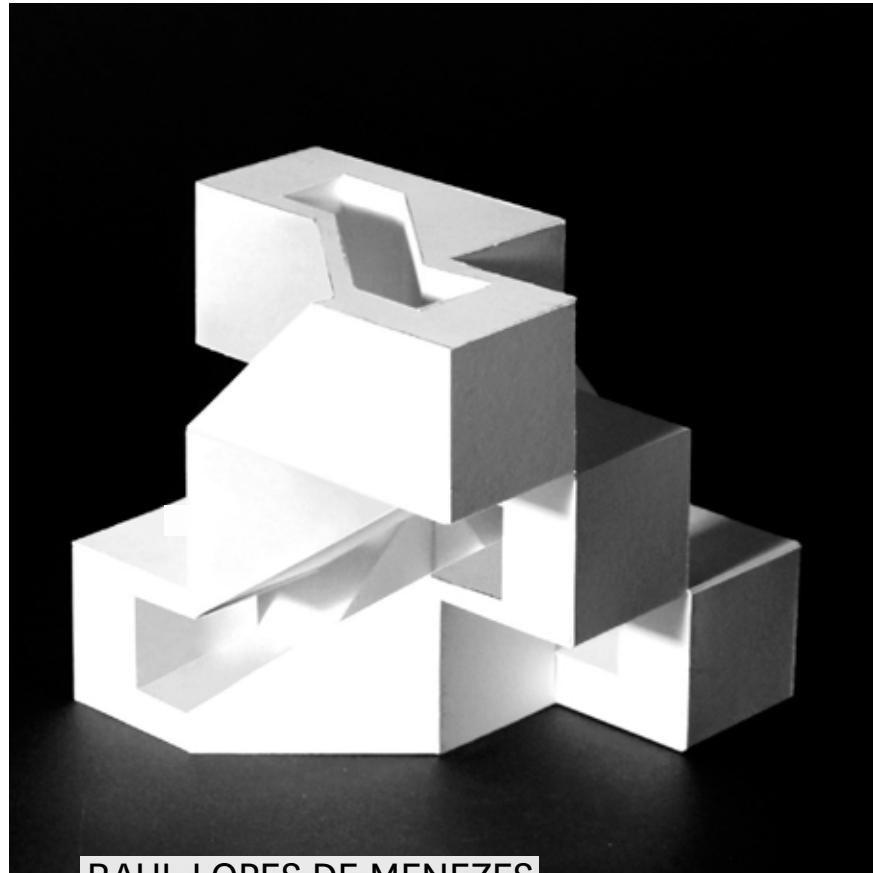
JOSE IGNACIO ONRUBIA

B.ARCH 2022
102A ARCHITECTURAL DESIGN I
2017-18



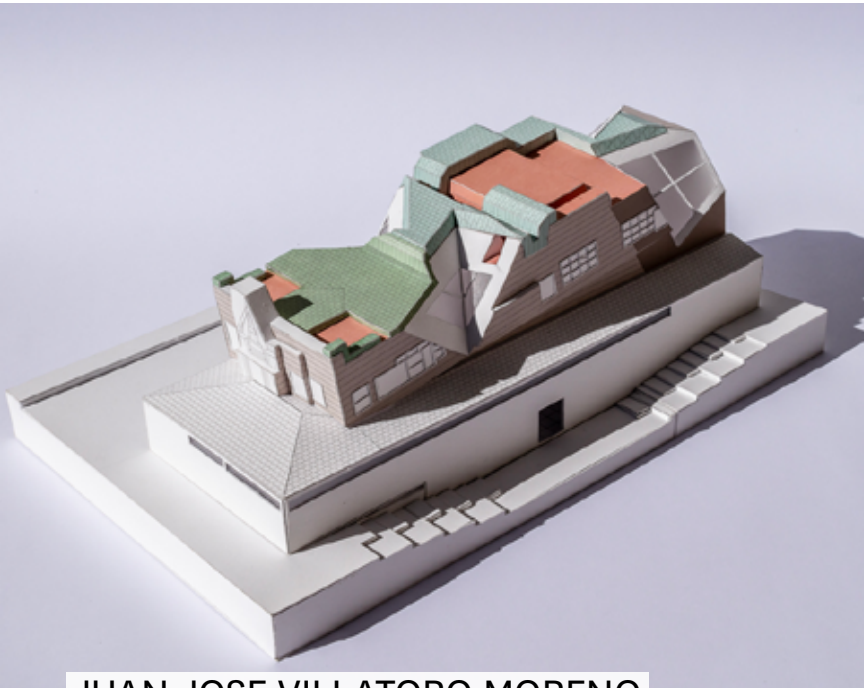
VERN STELZER

B.ARCH 2021
102B ARCHITECTURAL DESIGN I
2016-17



RAUL LOPES DE MENEZES

B.ARCH 2022
102B ARCHITECTURAL DESIGN I
2017-18



JUAN JOSE VILLATORO MORENO

B.ARCH 2022
202A ARCHITECTURAL DESIGN II
2018-19



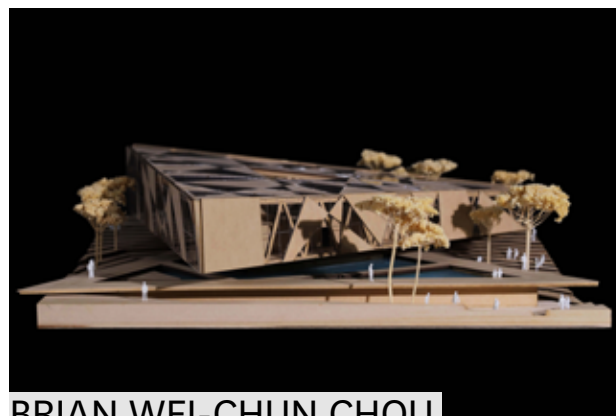
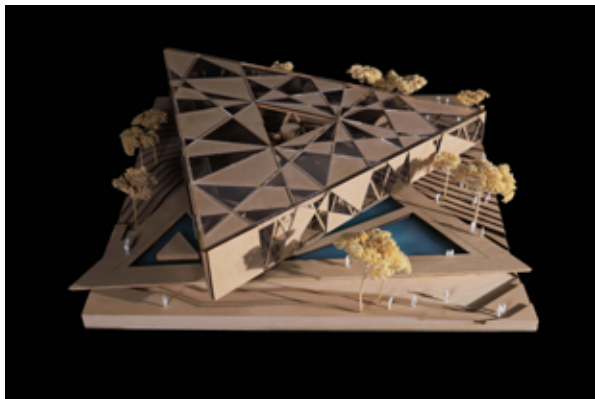
MADELYN ROSEN

B.ARCH 2022
202BL ARCHITECTURAL DESIGN II
2018-19



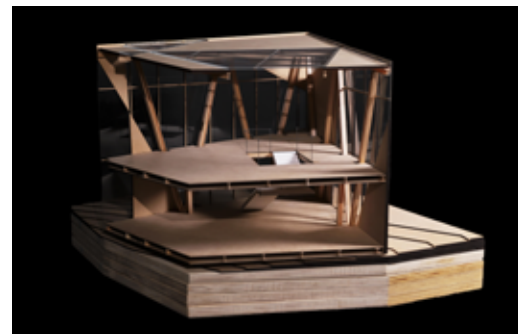
BRIAN WEI-CHUN CHOU

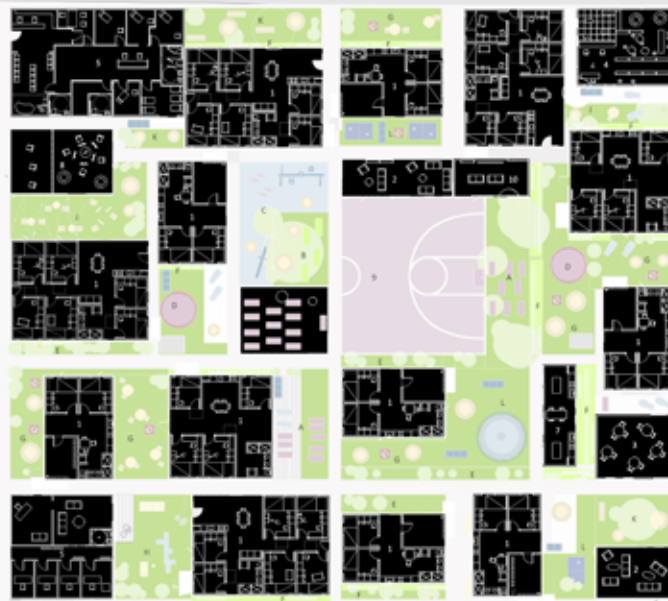
B.ARCH 2021
302B ARCHITECTURAL DESIGN III
2018-19



BRIAN WEI-CHUN CHOU

CONTINUED





JEESOO SHIN

B.ARCH 2020

402A ARCHITECTURAL DESIGN IV

2018-19



ESTHER HO

B.ARCH 2019

502AL ARCHITECTURAL DESIGN V

2018-19



ZHU CAO

B.ARCH 2019
502AL ARCHITECTURAL DESIGN V
2018-19

UNDERGRADUATE ADMISSIONS

*WITH CLOSE TO 100
FACULTY MEMBERS AND
420 UNDERGRADUATE
STUDENTS, THE USC
SCHOOL OF ARCHITECTURE
IS COMMITTED TO SHAPING
STUDENT EXPERIENCES
TO HELP YOU PERFORM
WELL IN THE PROFESSION
AND LEAD THE DISCIPLINE
IN NEW DIRECTIONS,
SENSING, RESPONDING TO
AND CREATING POSITIVE
CHANGE IN SOCIETY.*

BRIAN MORRIS ROHRLICK
B.ARCH 2018

Your experience in the program will be a continuous act of discovery: of observing, recording, interpreting, and finally, inventing proposals for the built environment that are in response to ideas and critical intentions. As the only private school of architecture based at a major research university on the West Coast, the school understands architecture as a fundamental intellectual discipline among the arts, humanities, and sciences.

USC takes a holistic, qualitative approach to reviewing applications. Grades and academic rigor are weighed against personal qualities such as leadership, service and unique talents. We look for those students we believe would be an ideal fit for, and thrive in, the challenging academic environment USC provides. We welcome you to apply and start your journey as a member of the Trojan Family.

PORTFOLIO GUIDELINES

ALL applicants to the Bachelor of Architecture program are required to submit a portfolio at the time of application. Please review the details online:
ARCH.USC.EDU/UNDERGRADUATE-APPLY

FIRST-YEAR (FRESHMAN) APPLICANTS

We are interested in seeing evidence of your creativity and curiosity. Work selected for inclusion should demonstrate the breadth and diversity of your creative interests and need not be limited to architectural work (if included at all). Drawing, sketching, painting, graphic design, photography, video, web design, sculpture, ceramics, fashion design and furniture design are just some examples of the types of work that may be included. Work may be produced for school courses, extracurricular activities or independently. Do not include technical drafting unless you designed the content of the drawing. Your portfolio should be limited to your strongest work. Avoid including too many pictures of the same piece. A concise description of each project (title, size, media, etc.) should accompany each example. If the work was part of a group effort, please indicate your specific contribution.

TRANSFER APPLICANTS

Transfer students may be considered for the USC School of Architecture at one of three levels; First Year, Summer Transfer Studio or Second Year of the Bachelor of Architecture program. On an individual basis, students are carefully evaluated by members of the School's admissions committee for academic and creative accomplishments at their previous institutions, how the experience of their previous course of study has prepared them for our program as well as future promise at USC and the School of Architecture.

Details about undergraduate admission requirements may be found online at:

ARCH.USC.EDU/UNDERGRADUATE-APPLY

UNDERGRADUATE APPLICANT CHECKLIST

CHECKLIST	FIRST-YEAR	TRANSFER
Common Application and the USC Writing Supplement	✓	✓
Portfolio + Architecture Writing Supplement (SlideRoom)	✓	✓
Common Application School Report	✓	
Letter of Recommendation from a Teacher or a Counselor	Via Common Application	Via SlideRoom
High School Transcript(s)	✓	✓
College Transcript(s)	If coursework completed	✓
Official Test Scores: SAT or ACT	✓	If applying with less than 30 semester units of college coursework
Fall Grades (when available)	✓	✓

INTERNATIONAL APPLICANTS MUST ALSO SUBMIT:

Financial Statement of Personal or Family Support

TOEFL, IELTS, or PTE Academic scores, if the student's native language is not English

Details about the above requirements may be found at:
ADMISSION.USC.EDU/APPLY/

GRADUATE PROGRAMS



M.ARCH DESIGN FOUNDATIONS
FALL 2018 EXHIBIT

MASTER OF ARCHITECTURE

FIRST-PROFESSIONAL

3 Years, 102 Units

For students who have completed a bachelor's degree with a major other than one of the design professions.

FIRST-PROFESSIONAL WITH ADVANCED STANDING

2 Years, 64 Units

For students with a pre-professional undergraduate degree in architectural studies.

The Master of Architecture is built on three levels. The first level is dedicated to introducing essential disciplinary knowledge and the basic skills required for the NAAB-accredited degree. The second level builds upon this foundation with increasingly refined vocational knowledge and advanced professional capability. The final level culminates with a year of individually directed work, with master classes and a directed design research project (thesis) focused on the student's emergent architectural interests. All three levels draw on the University's extended resources and the inspiration of Los Angeles. Firmly rooted in an investigative mode of critical, professional practice, the program's aim is for every graduate to be prepared for the challenges of the 21st century.

Our Master of Architecture First Professional Degree Program is a STEM-designated program (CIP Code 04.0902). This applies to both the three-year and two-year tracks. The STEM designation allows international students to be eligible for a 24-month extension of the Optional Practical Training (OPT) period (for a total eligibility of up to 36 months instead of the maximum 12 months of eligibility for non-STEM disciplines).

MASTER OF ADVANCED ARCHITECTURAL STUDIES

POST-PROFESSIONAL

1 Year, 48 Units

The Master of Advanced Architectural Studies program is a one-year (three-semester) post-professional degree intended for individuals who have completed a professional degree in Architecture (B.Arch/M.Arch). Working across disciplines and at multiple scales, the program operates in the territory between real-world issues and innovative architecture proposals. Pedagogically, the program has a dual emphasis, integrating architecture and urban theory with cutting-edge design research and collaborative experimentation on issues of housing and urbanism, domestic life and technological adaptability.

MASTER OF LANDSCAPE ARCHITECTURE

FIRST-PROFESSIONAL

3 Years, 96 Units

For students entering without a previous Bachelor of Landscape Architecture degree.

FIRST-PROFESSIONAL WITH ADVANCED STANDING

2 Years, 64 Units

For students who have completed an undergraduate professional Landscape Architecture degree and have completed previous coursework in plant materials, landscape construction and media.

USC's Master of Landscape Architecture program blends design studios, media and representation, history and theory, construction documentation, plant materials and ecology, and urbanism. The studio sequence builds design and communication skills within the process of understanding site, context, and strategies for intervention. We begin with small local urban sites where intensive field work is critical to site understanding and build up to a year-long investigation of relevant topics and site investigations in the third-year design research seminar and studios. Second-year studios provide opportunities to examine design responses to climate change impacts and collaborate with architecture students in an integrated setting.

Our Master of Landscape Architecture First Professional Degree Program is a STEM-designated program (CIP Code 03.0103 Environmental Studies). This applies to both the three-year and two-year tracks. The STEM designation allows international students to be eligible for a 24-month extension of the Optional Practical Training (OPT) period (for a total eligibility of up to 36 months instead of the maximum 12 months of eligibility for non-STEM disciplines).

MASTER OF BUILDING SCIENCE

2 Years, 48 Units

For students with a background in architecture, engineering or related areas.

Building Science at the USC School of Architecture recognizes that exemplary architecture requires innovative responses to natural forces. The integration of the study of building sciences with knowledge of current practices and new technologies creates synergistic and holistic architectural design that satisfies performative goals. The Master of Building Science program addresses the need for a new generation of design professionals prepared to bring appropriate technology to the design of a sustainable environment.

WITHIN THIS CONTEXT, THE PROGRAM EMPHASIZES:

1. The integration of planning, design, and technology to form a coherent, interdependent force for the appropriate construction of urban places.
2. Recognition of the ecological importance of energy-conscious design and construction as well as the social value of places in which natural forces and systems are utilized rather than suppressed.
3. The development of research and design methods suited to the complexity of building in urban settings and effective in the use of extensive information. Students are individually guided through their study and complete a thesis-based research project.

MASTER OF HERITAGE CONSERVATION

2 Years, 48 Units

*For students without a related
undergraduate degree.*

ADVANCED STANDING

1.5 Years, 36 Units

*For students with a graduate certificate in historic
preservation or heritage conservation; professional
degree or professional registration in architecture or
engineering; graduate degree in a related field, such as
architectural history, planning or history; and at least
five years of teaching or practice (may be combined).*

The Master of Heritage Conservation program exposes students to a broad range of topics including materials conservation, policy and planning, conservation theory, global conservation efforts, architectural and landscape history, best practices in resource documentation and evaluation, sustainability, and historic site management. Students are encouraged to take advantage of the many academic resources in the broader University, including taking courses in real estate, regional history, urban planning, and spatial sciences. Program faculty are leaders in the field, a blend of academics and practitioners that grapple with conservation in real time, seeking creative solutions that balance the integrity of the past with a sustainable future. Through this broad exposure, students begin to formulate their professional path within the discipline. Embedded in the USC School of Architecture, heritage conservation students are instantly part of a multidisciplinary environment, linking landscape architecture, building science, architecture and conservation.

DUAL DEGREE PROGRAMS

MASTER OF ADVANCED ARCHITECTURAL STUDIES POST-PROFESSIONAL/MASTER OF PLANNING

2.5 Years, 72 Units

The MPL/M.AAS post-professional dual degree program offers students interested in developing a career in urban design an opportunity to make more substantial commitments in both disciplines and to achieve a more coherent and extensive knowledge in the design of built environments and public policy. Qualified students must already possess a five-year professional degree in architecture.

MASTER OF LANDSCAPE ARCHITECTURE/MASTER OF PLANNING

3.5 Years, 108 Units

ADVANCED STANDING: 2.5 Years, 82 Units

The MLA/MPL dual degree program facilitates cross-disciplinary studies in landscape architecture and planning at the master's level. Qualified students who are admitted to the MLA program in the School of Architecture and to the graduate program in the USC Price School of Public Policy may complete both degrees in a highly integrated program that prepares graduates for doctoral studies or a career in urban design, landscape architecture and planning.

MASTER OF HERITAGE CONSERVATION/ MASTER OF PLANNING

2.5 Years, 60 Units

The MHC/MPL dual degree program imparts to students a basic familiarity with the origins and development of the philosophies, theories, and practices of planning and heritage conservation. The curriculum teaches the laws, regulations, and policies that apply to planning and conservation practice in the United States and internationally. Students will gain knowledge of urban design, public policy, and architectural and planning history and theory. Students will be expected to understand the critical methodological tools necessary for a professional engaged in the investigation, interpretation, and evaluation of the urban built environment.

CERTIFICATE PROGRAMS

ARCHITECTURE

The focus of this program is on understanding the broad and complex role of architecture within the urban context. Studies examine cities throughout the world where conditions of increasing density, environmental challenges and cultural complexity require design initiatives that support amenity, sustainability and cultural meaning. This 14-unit certificate is open to graduate students not pursuing a master's degree in architecture.

BUILDING SCIENCE

This certificate is designed for working professionals and graduate students (with the exception of students enrolled in the MBS degree program) to acquire understanding of core issues and knowledge related to building science. This 14-unit program requires graduate standing.

HERITAGE CONSERVATION

Ideal for professionals who wish to augment their academic credentials in order to facilitate their work on heritage conservation projects, the 14-unit certificate program includes four core classes that impart the fundamentals of the discipline. The certificate is also an ideal complement to graduate studies in architecture, landscape architecture, building science, planning, public art administration, geography, anthropology or other related disciplines.

LANDSCAPE ARCHITECTURE

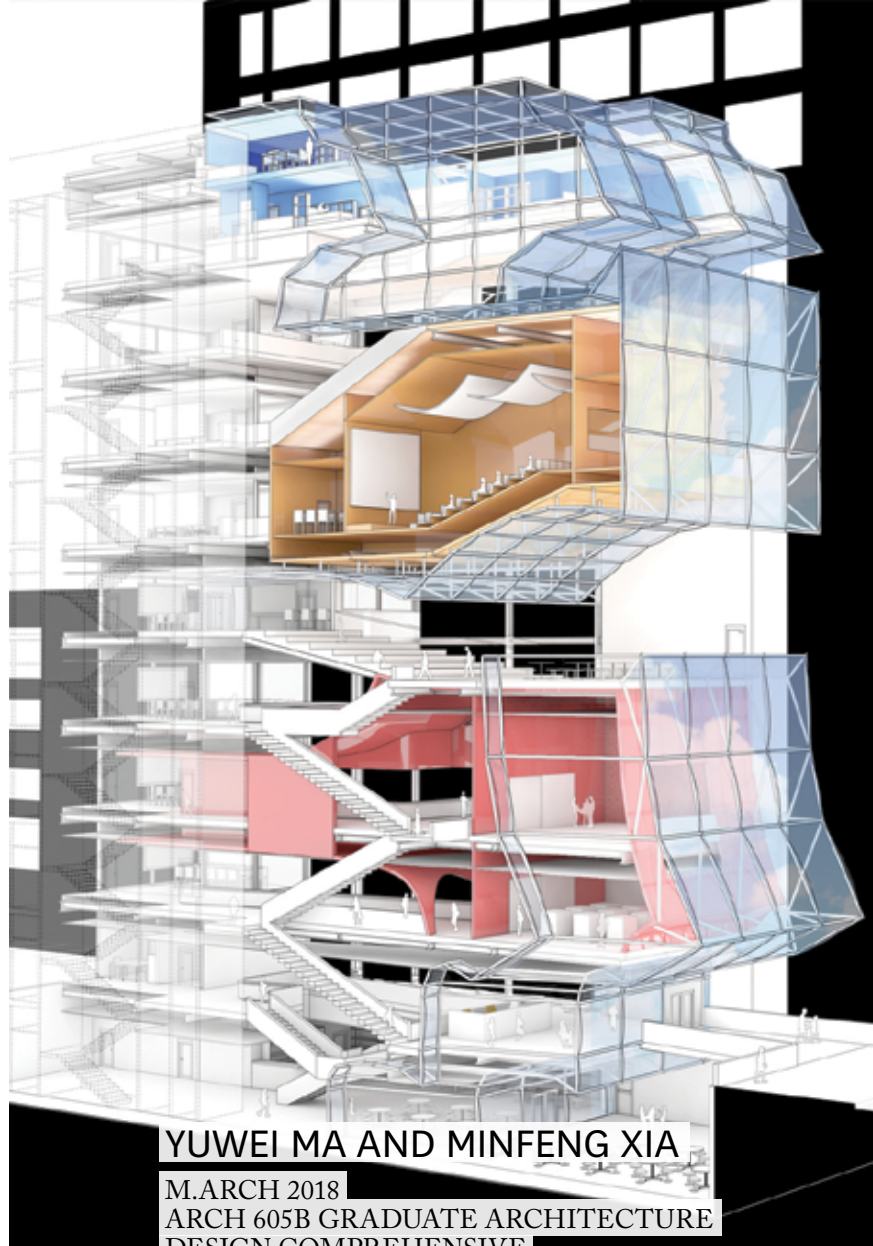
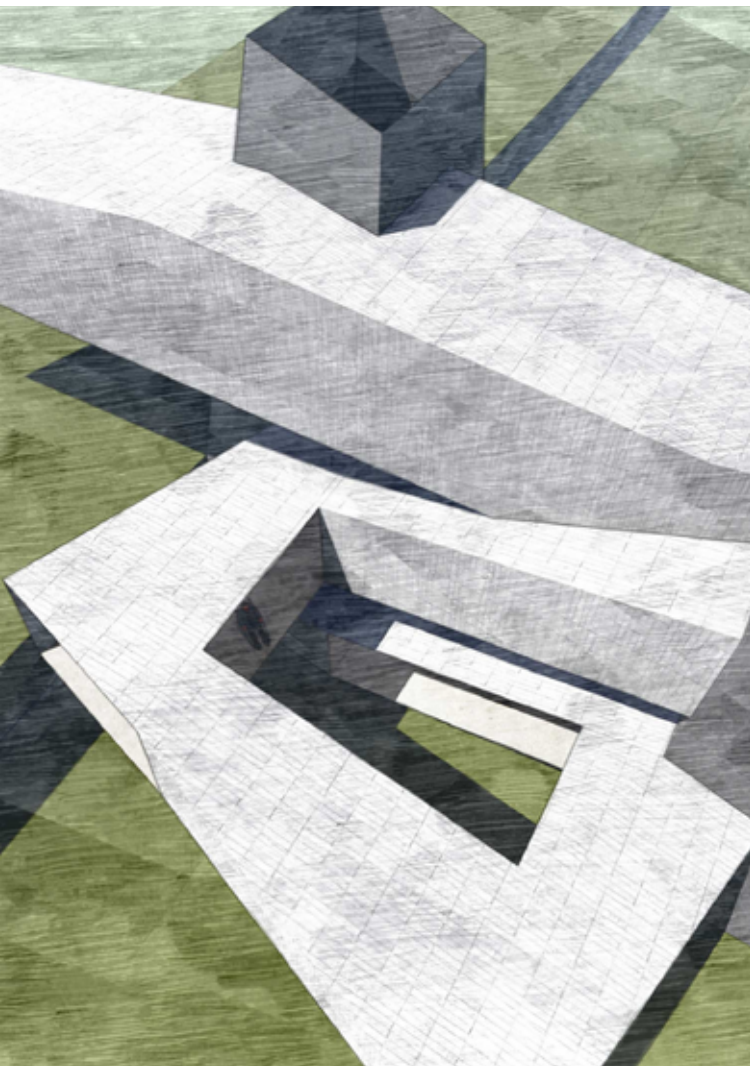
This 14-unit program is intended to introduce at the graduate level the basic subjects inherent to the field of landscape architecture: plant materials suitable to urban conditions; urban utility and transportation systems in relation to topography, natural drainage and pathways; plant and wildlife communities; inquiries about landscape infrastructure and ecology; and the history of human settlement in the evolution of urban landscapes.

SUSTAINABLE DESIGN

This 14-unit certificate provides students with the tools necessary to understand and quantify sources of energy use in buildings and landscapes and to use design of natural and man-made systems to reduce their energy use. Students will learn to make informed sustainable design choices that consider the performance of the built environment related to the energy required to make it, the energy it absorbs or releases, the energy required to maintain it, and the energy required to replace it. Environmental, economic and socially responsible solutions will be explored through the coursework.

ZHIJIN SHEN

M.ARCH 2021
ARCH 505A GRADUATE ARCHITECTURE DESIGN I
2018-19



YUWEI MA AND MINFENG XIA

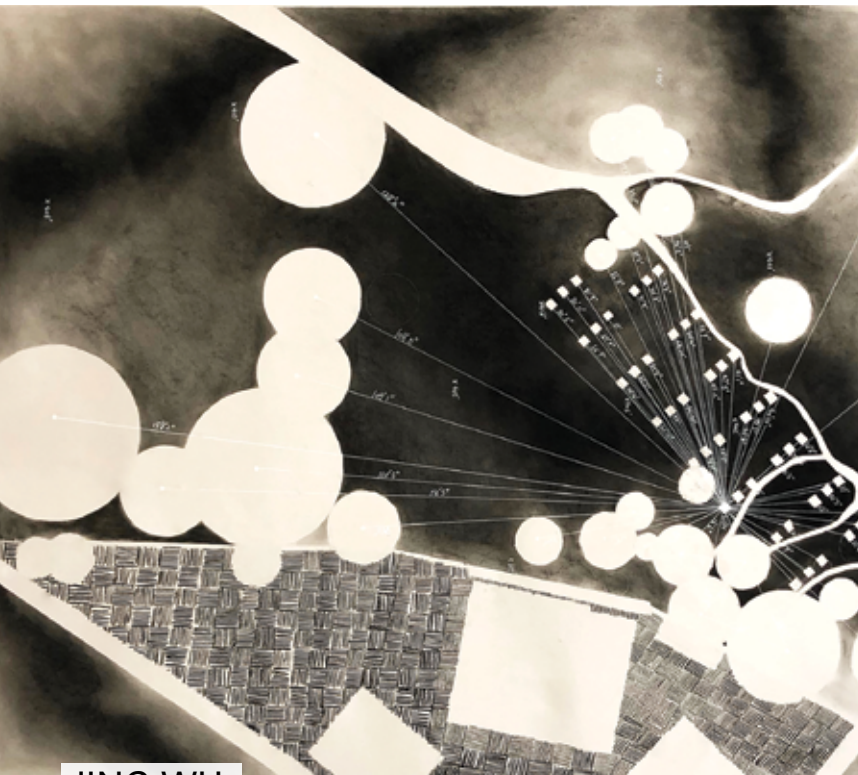
M.ARCH 2018
ARCH 605B GRADUATE ARCHITECTURE
DESIGN COMPREHENSIVE
2016-17

ASHLEY PENG

M.AAS 2019

ARCH 793B DIRECTED DESIGN RESEARCH
2018-19





JING WU

MLA 2020
539 MEDIA FOR LANDSCAPE ARCHITECTURE
2017-18



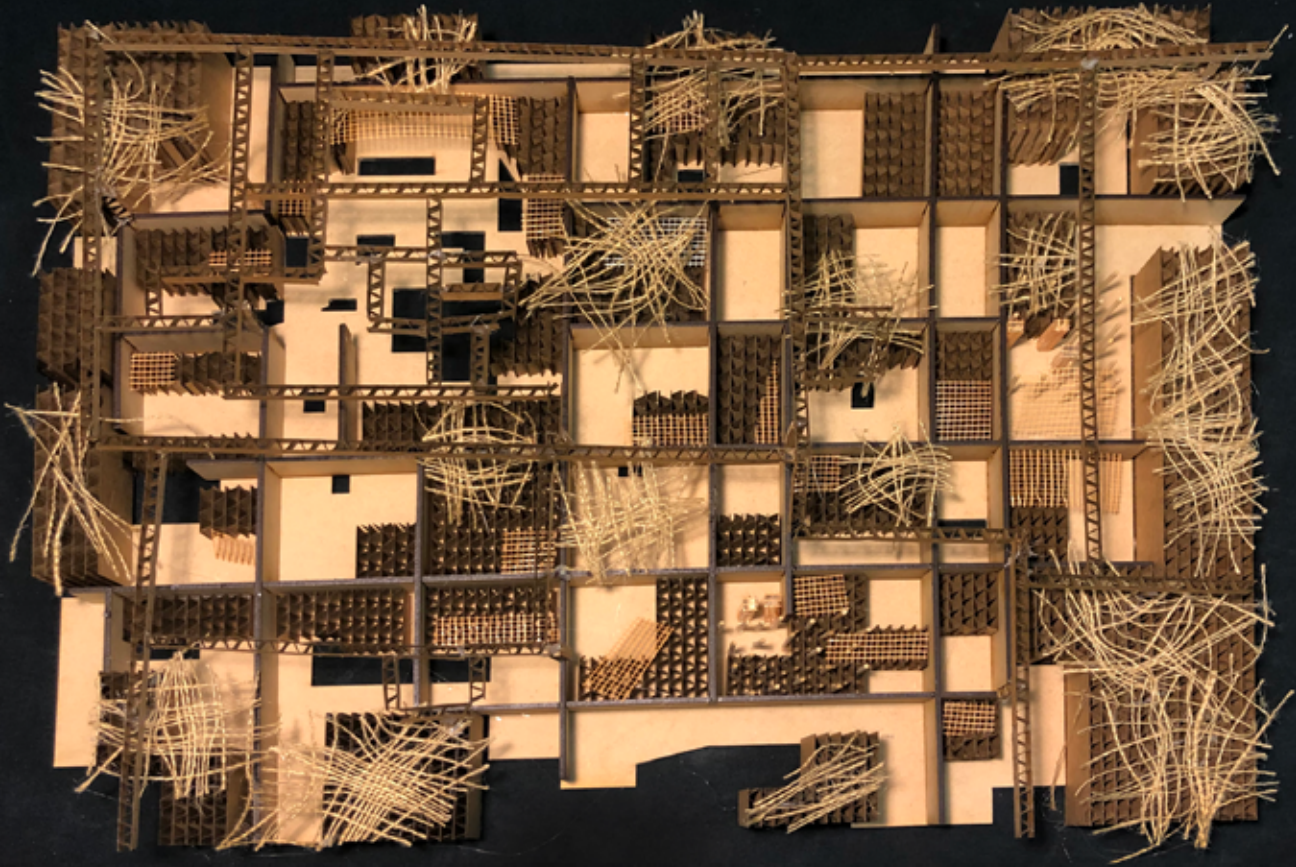
JING WU

MLA 2020
ARCH 542A LANDSCAPE ARCHITECTURE DESIGN
2018-19

ZHIYA (AZALEA) HUANG

MLA 2019

ARCH 698B LANDSCAPE ARCHITECTURE THESIS
2018-19



GRADUATE ADMISSIONS



SP.19 GRADUATE
FINAL REVIEWS

*THE GRADUATE
PROGRAMS AT THE
USC SCHOOL OF
ARCHITECTURE HELP
NURTURE THE INVENTIVE
IMAGINATIONS OF
CREATIVE THINKERS
AND INSPIRE IMMERSIVE
ENGAGEMENT IN A
COMPLETE DESIGN
DIALOGUE.*

Our graduate programs promote the aggressive exchange of ideas and encourage the proactive participation in the processes of design, building technology and conservation on both the neighborhood scale and global stage.

Through our graduate programs, you'll develop real-world problem-solving skills and join a group of ambitious scholars, innovators and leaders who want to make a difference in their home communities and beyond.

Graduate students may choose from our five master's degrees, three dual degrees and five certificate programs to best pursue their individual interests and goals. Our degree curriculum—whether in architecture, landscape architecture, building science or heritage conservation, has always been intensive, in-depth and topical—with each program fusing history, theory, technology and design into a variety of degree programs that well-prepare our students for the rigors of professional design practice.

GRADUATE APPLICANT CHECKLIST

- ✓ USC Graduate Online Application (USC CAS)
- ✓ Official Transcript(s)
- ✓ Graduate Record Exam (GRE)
NOT REQUIRED for Graduate Certificates in:
Architecture, Building Science, Landscape Architecture,
and Sustainable Design.
- ✓ Resume and/or Curriculum Vitae
- ✓ Statement of Intent
- ✓ Three (3) Letters of Recommendation
- ✓ Portfolio
NOT REQUIRED for Master of Heritage Conservation.
OPTIONAL for Master of Building Science, Graduate
Certificates in: Architecture, Building Science,
Landscape Architecture, Sustainable Design, and
Heritage Conservation.
- ✓ Writing Sample
NOT REQUIRED for Master of Advanced Architectural
Studies, Master of Architecture, Master of Building Science,
and Master of Landscape Architecture.
OPTIONAL for Graduate Certificates in: Architecture, Building
Science, Landscape Architecture, and Sustainable Design.

INTERNATIONAL APPLICANTS MUST ALSO SUBMIT:

Financial Statement of Personal or Family Support, TOEFL or IELTS scores, and copy of passport

Details about the above requirements, application deadlines, and FAQs may be found at:

ARCH.USC.EDU/GRADUATE-ADMISSIONS

HIGH SCHOOL PROGRAM

USC SUMMER PROGRAM: *EXPLORATION OF ARCHITECTURE*

2 or 4 Weeks

Exploration of Architecture provides high school students with an introduction to architectural education and the vibrant surroundings of Los Angeles through an exciting two or four weeks at the USC School of Architecture. Students will design and build projects in a collaborative studio environment, tour famous landmarks, live on-campus in a residence hall, and work with the School's distinguished faculty and upper division students. The four-week program offers three units of college credit.

These programs will enable students to make an informed decision about future academic and professional choices. They will take study trips around greater Los Angeles, attend lectures and participate in other activities in Southern California. Students will meet and make friends with other participants from around the world with similar interests. These programs provide excellent opportunities to refine problem-solving skills and deal with abstract concepts.

