



ypp



# 5 South Parade Floor Plans

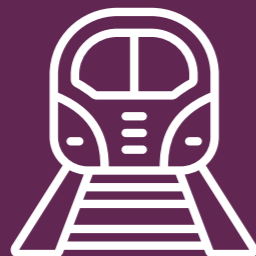
# The new way of living.

Could this be our best location in Leeds? Right in the heart of the city centre, it sits just a 7 minute walk from Leeds Train Station, Trinity Shopping Centre and university campuses! On the edge of the financial district, South Parade is arguably the most sought after location in Leeds with demand rising for this popular development every year. Not only do you have the amenities of the city centre right on your doorstep, from shops, cinemas and bowling alleys, to bars, cafes and restaurants, but you've got Park Square just around the corner. One of the city's largest green spaces, it's perfect for summer whether you want a sunbathe or a game of football. Not only does its central location mean a short walk home but South Parade it fitted with secure code entry and cctv for your security. With lift access and internet included it's also been designed with convenience and ease in mind.

## Building features.



0.4km from Leeds  
Beckett University



0.4km from  
Train Station



City centre  
location



Secure  
code entry



Lift access



Limited  
parking available



Internet  
included

# 5 South Parade

LG



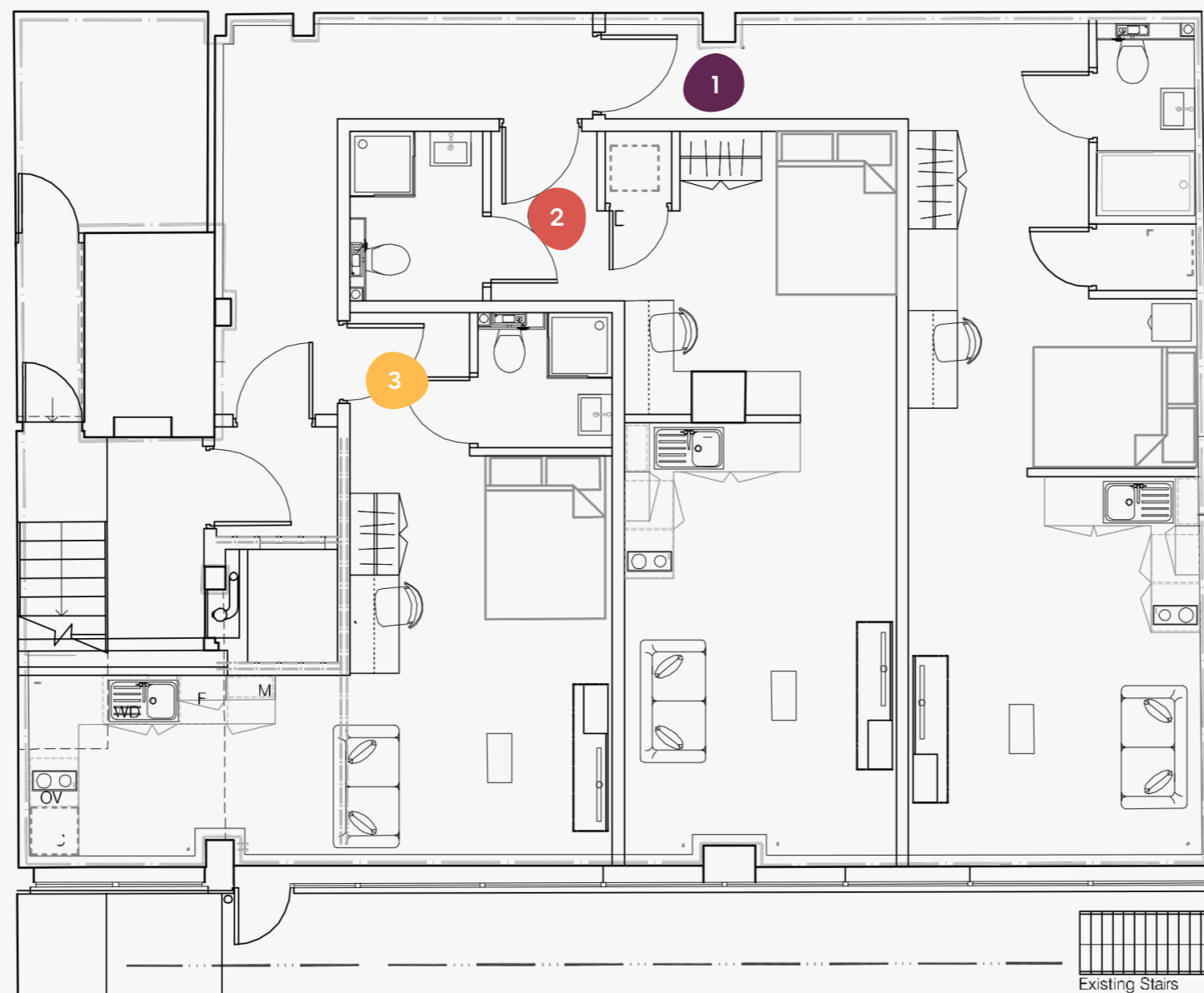
Lower Ground

5 South Parade, Leeds,  
LS1 5BB

- Superior
- Deluxe
- Executive
- Premium
- Classic

Flat      Size (sqm)

1	40.0
2	36.3
3	30.9



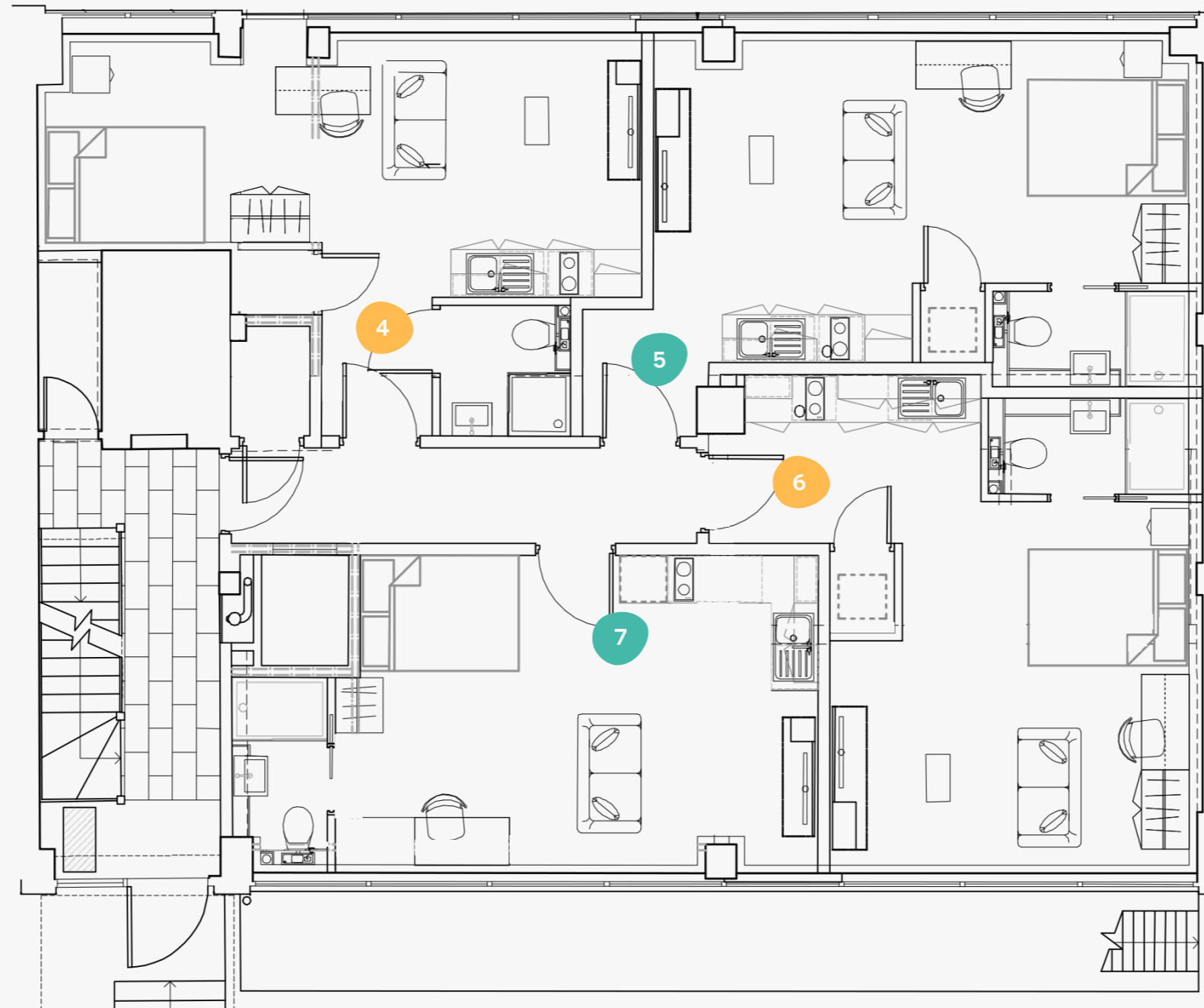
# 5 South Parade

GF



Ground Floor

5 South Parade, Leeds,  
LS1 5BB



- Superior
- Deluxe
- Executive
- Premium
- Classic

Flat      Size (sqm)

4	27.8
5	29.7
6	30.2
7	26.1

# 5 South Parade

1



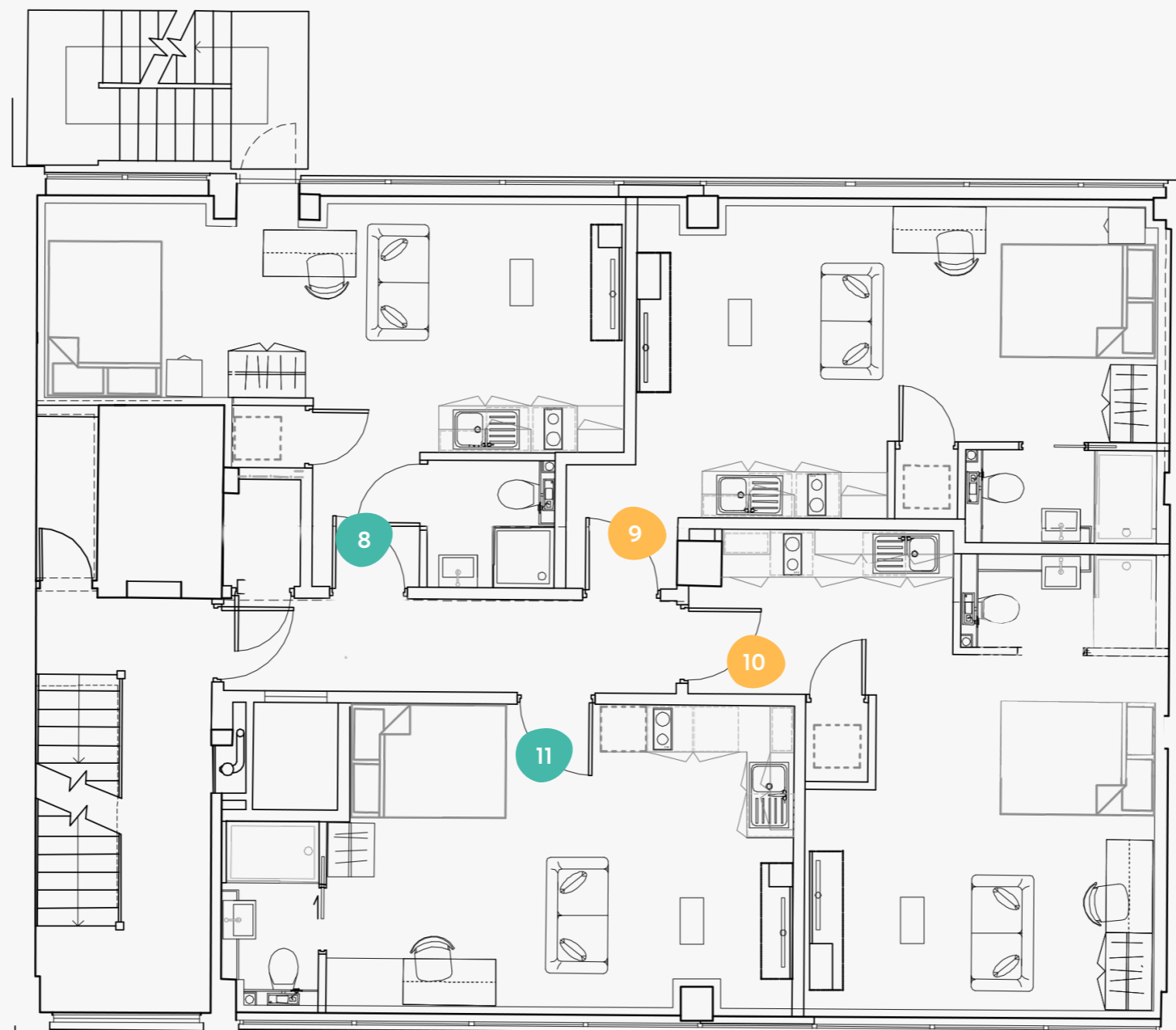
## First Floor

5 South Parade, Leeds,  
LS1 5BB

- Superior
- Deluxe
- Executive
- Premium
- Classic

Flat      Size (sqm)

8	27.8
9	29.7
10	31.3
11	26.4



# 5 South Parade

2



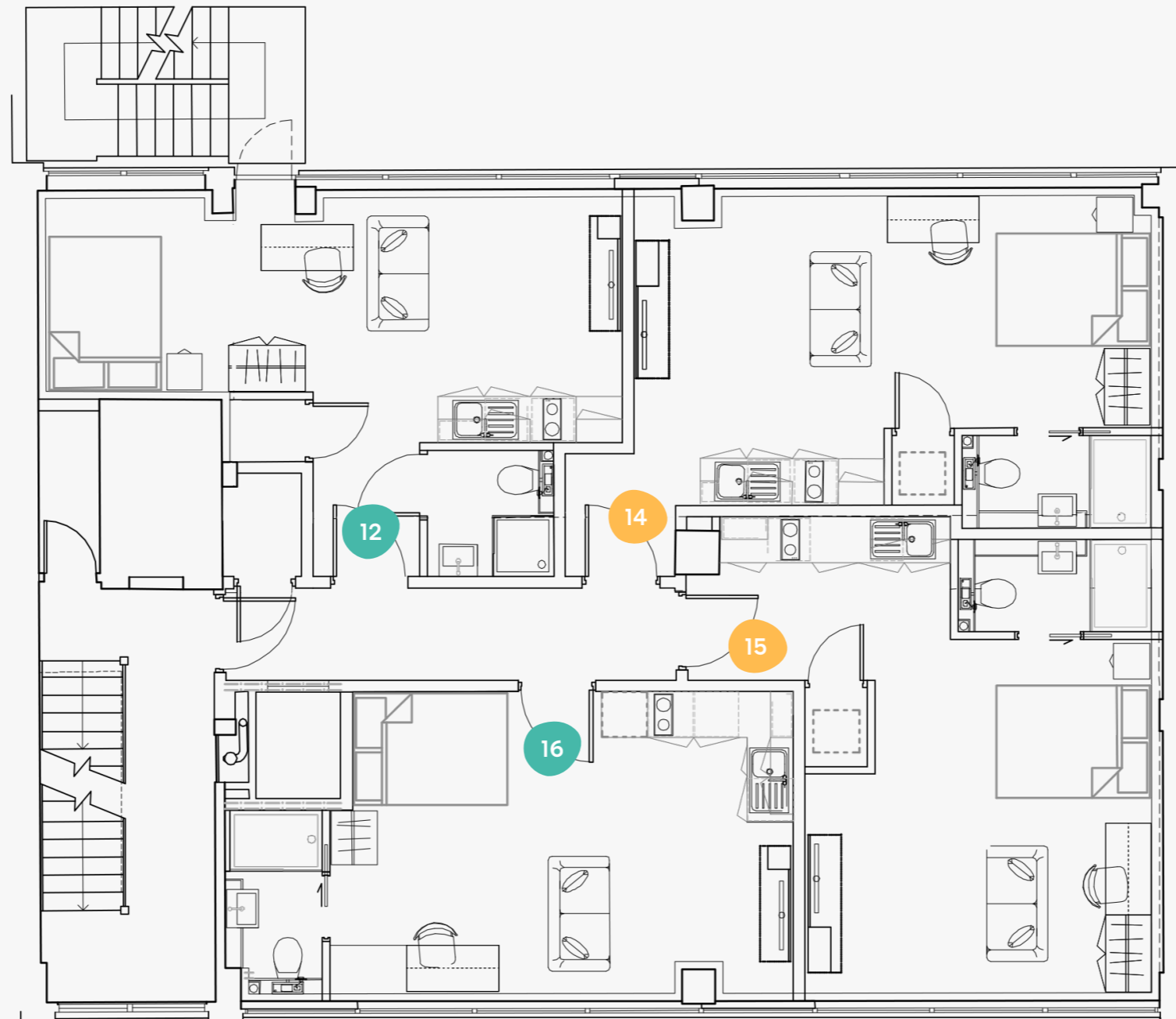
## Second Floor

5 South Parade, Leeds,  
LS1 5BB

- Superior
- Deluxe
- Executive
- Premium
- Classic

Flat      Size (sqm)

12	27.9
14	29.5
15	30.3
16	26.3



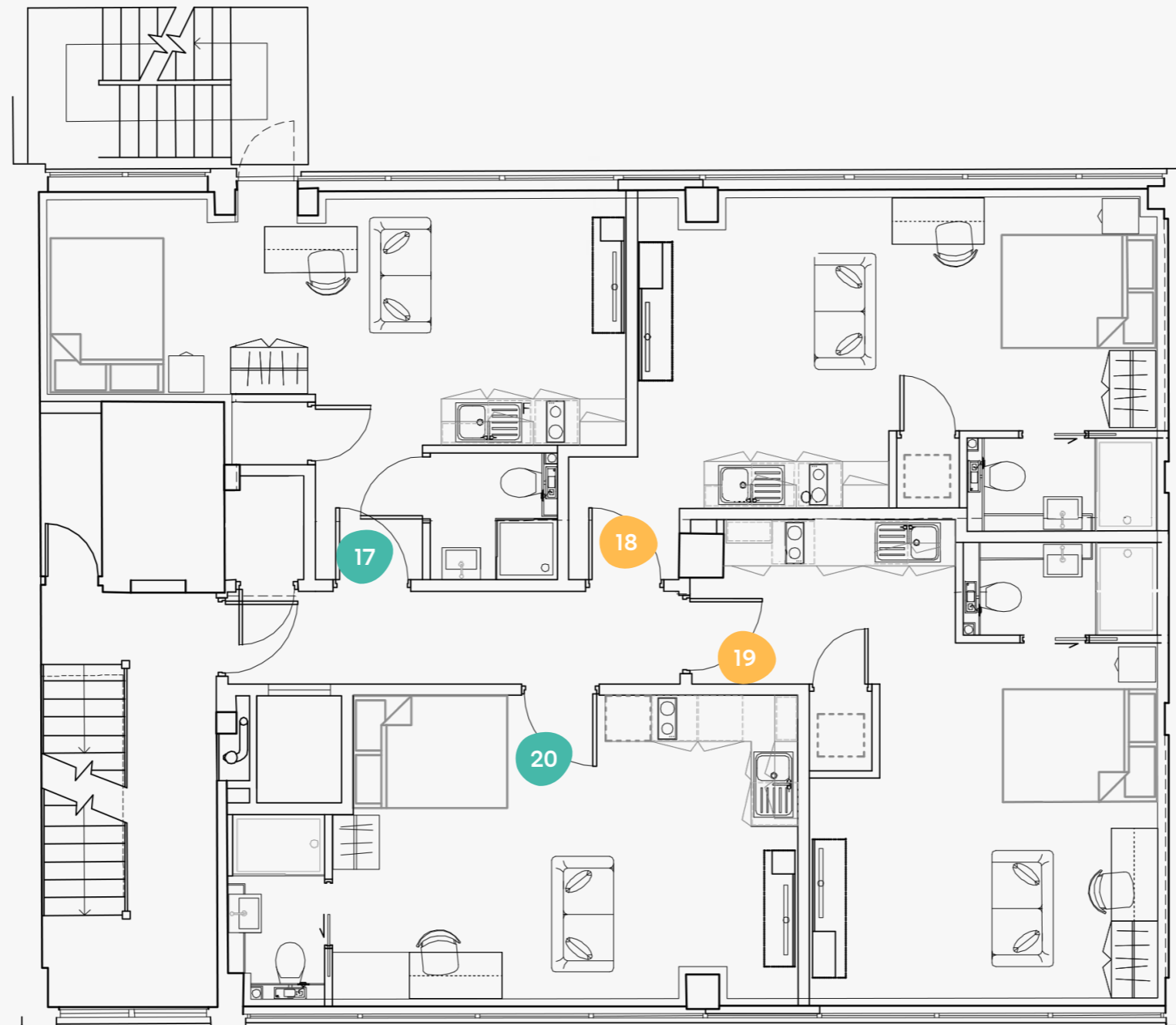
# 5 South Parade

3



## Third Floor

5 South Parade, Leeds,  
LS1 5BB



- Superior
- Deluxe
- Executive
- Premium
- Classic

Flat      Size (sqm)

17	27.6
18	29.5
19	30.3
20	27.7

# 5 South Parade

4



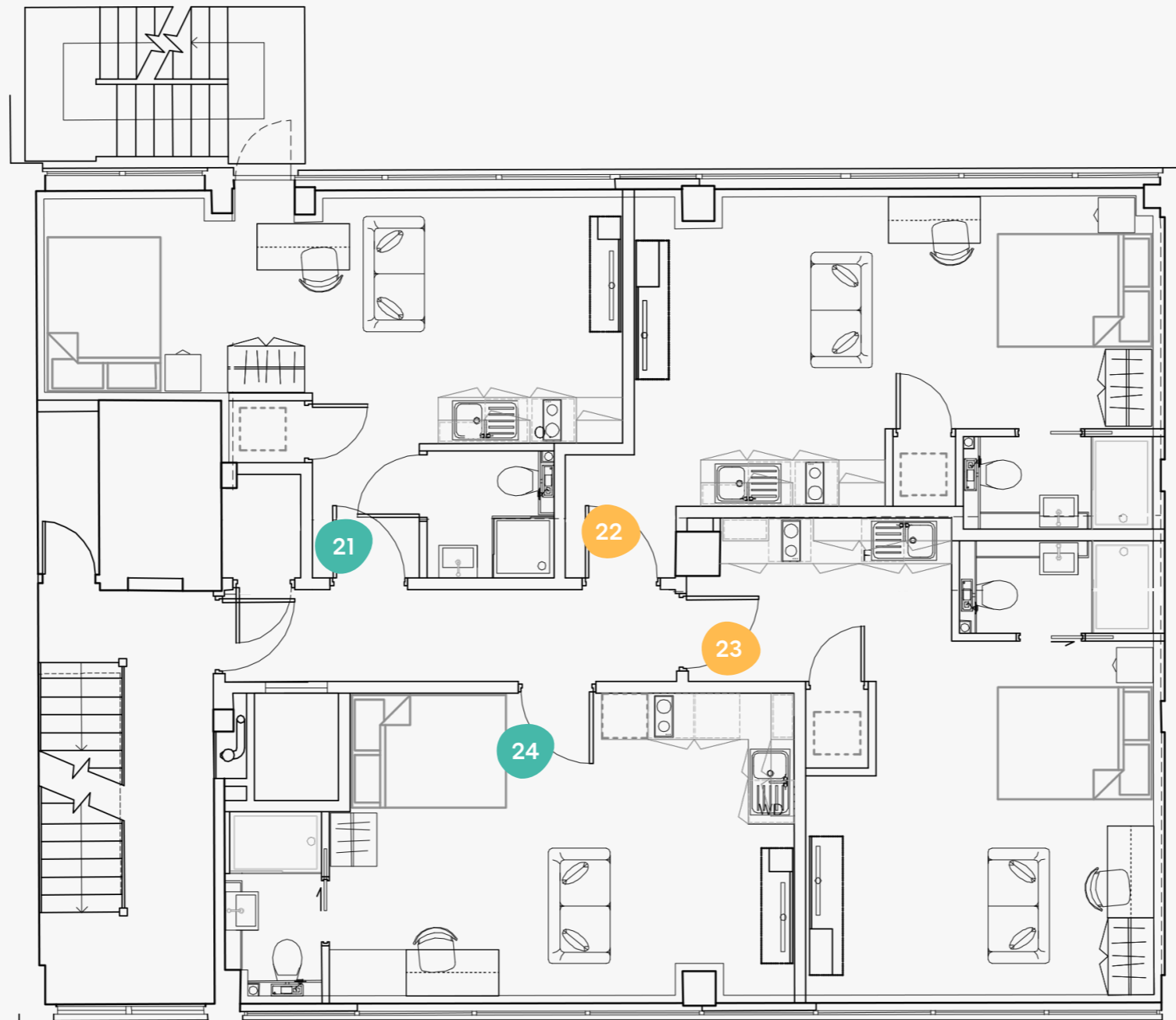
## Fourth Floor

5 South Parade, Leeds,  
LS1 5BB

- Superior
- Deluxe
- Executive
- Premium
- Classic

Flat      Size (sqm)

21	27.9
22	29.5
23	30.3
24	26.3










# 5 South Parade

5



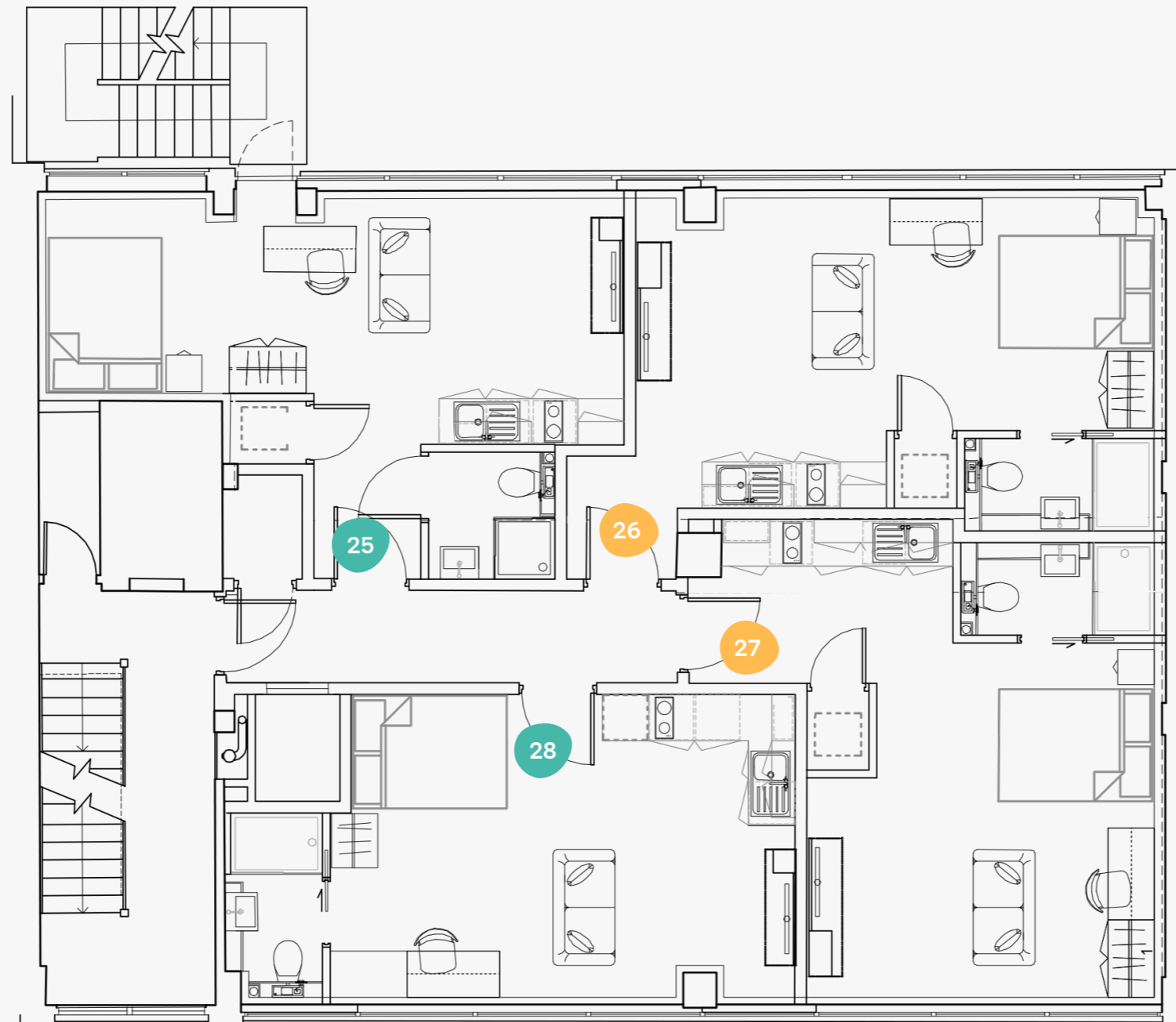
## Fifth Floor

5 South Parade, Leeds,  
LS1 5BB

-  Superior
-  Deluxe
-  Executive
-  Premium
-  Classic

Flat      Size (sqm)

25	27.9
26	29.5
27	30.3
28	26.3



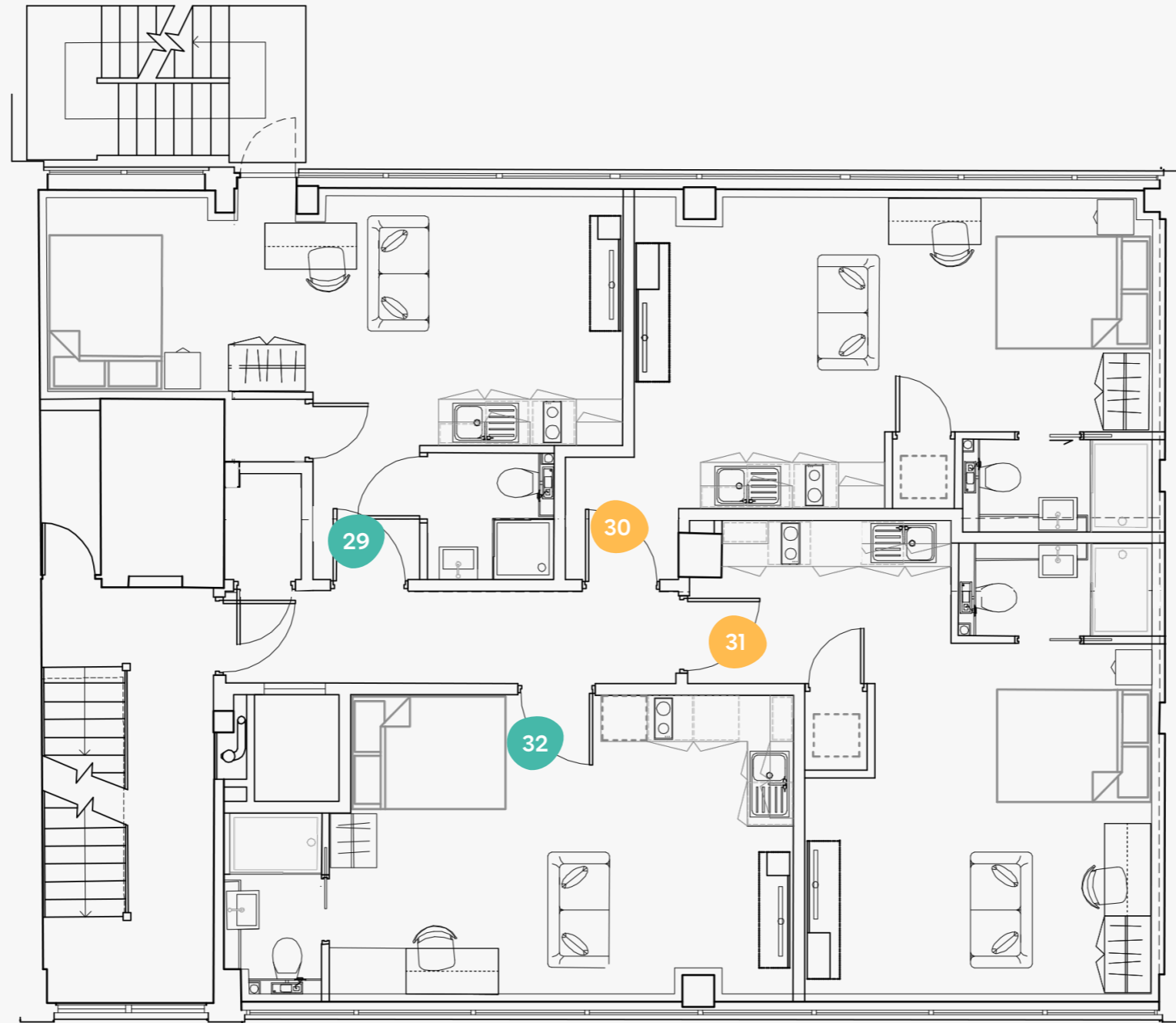
# 5 South Parade






6



## Sixth Floor

5 South Parade, Leeds,  
LS1 5BB



-  Superior
-  Deluxe
-  Executive
-  Premium
-  Classic

Flat      Size (sqm)

29	28.0
30	29.7
31	30.0
32	26.1

# 5 South Parade

7



## Seventh Floor

5 South Parade, Leeds,  
LS1 5BB

- Superior
- Deluxe
- Executive
- Premium
- Classic

Flat      Size (sqm)

33	22.6
34	26.1
35	24.7





Book online today at [ypp.co.uk](http://ypp.co.uk)  
info@ypp.co.uk | 0113 2444 666