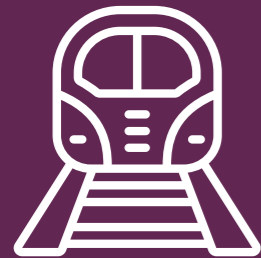


A large, dark purple, semi-circular graphic element is positioned in the bottom right corner of the image. Inside this shape, the text '47-49 East Parade Floor Plans' is written in a white, bold, sans-serif font. The background of the entire image is a photograph of a three-story stone building with bay windows and a 'SOLD' sign.

The new way of living.

This attractive, old stone building is set on East Parade, a very sought after area of Harrogate. There's even a shortcut through to the town centre, meaning it's just a 5-minute walk to Harrogate train station, perfect for commuters.

Building features.



0.3km from
Train Station

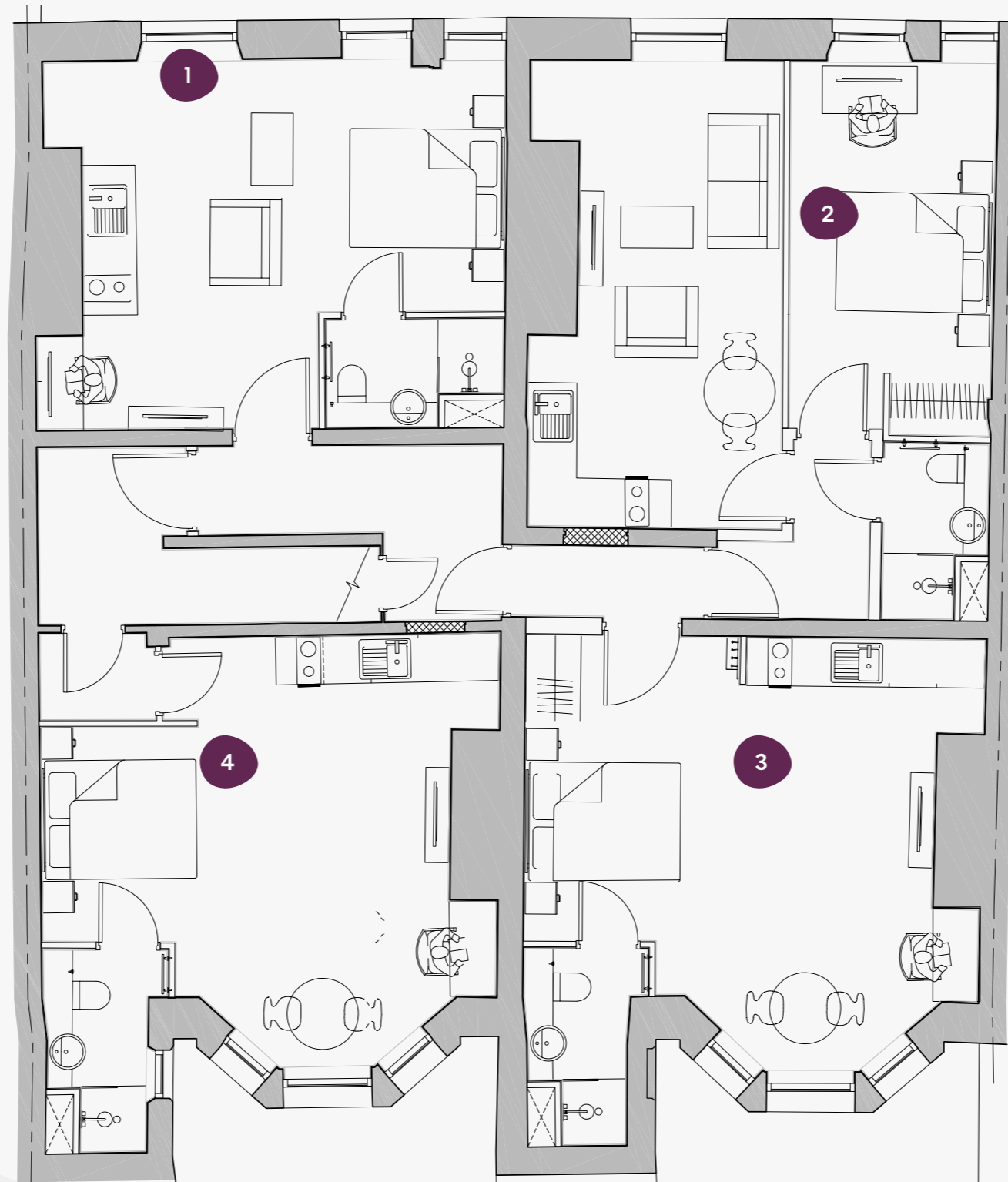


Limited parking
available



5 minute walk to
town centre

47-49 East Parade



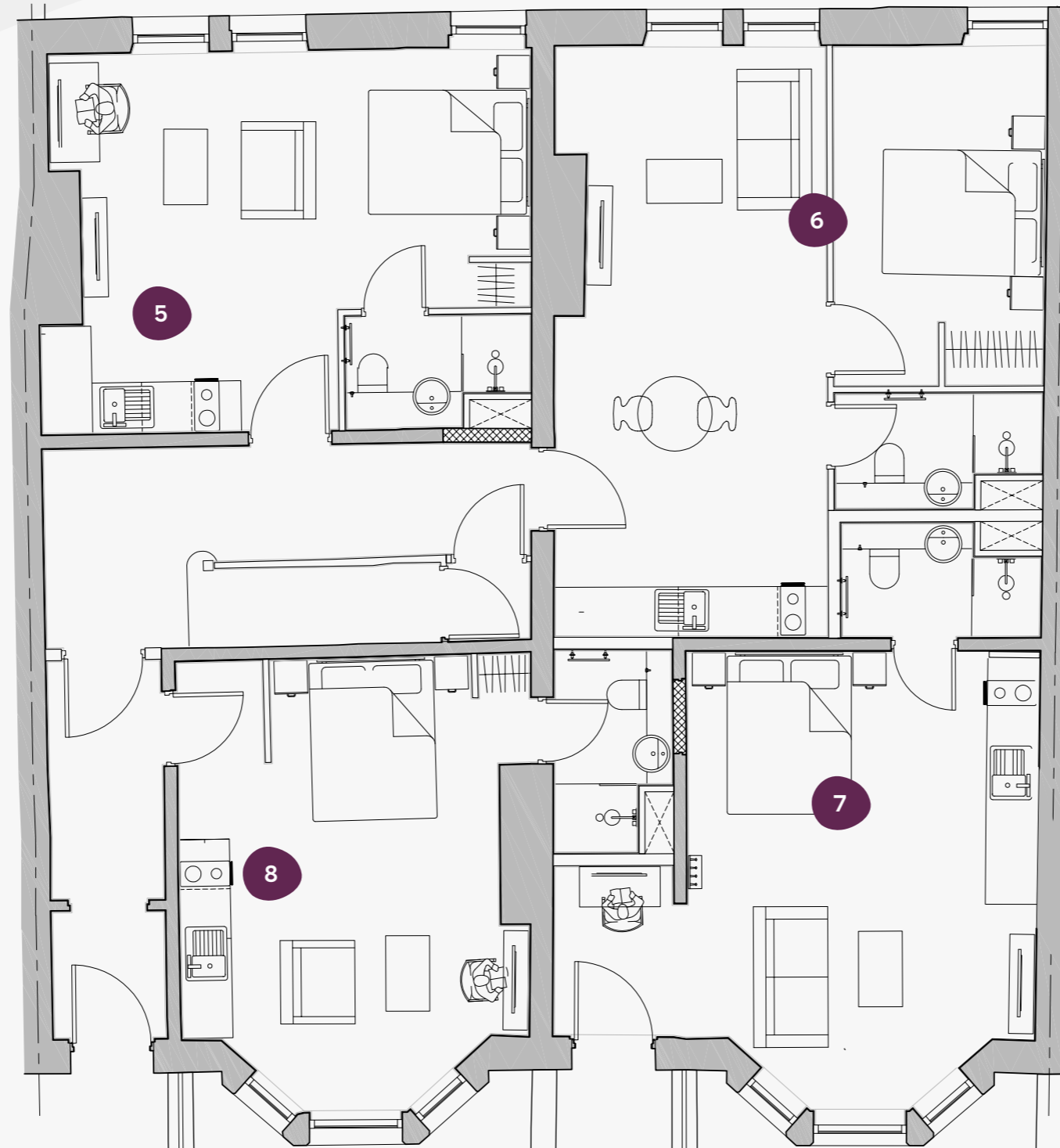
LG

Lower Ground

47-49 East Parade,
Harrogate, HG1 5LQ

Flat	Size (sqm)
1	26.26
2	37.29
3	29.69
4	29.82

47-49 East Parade



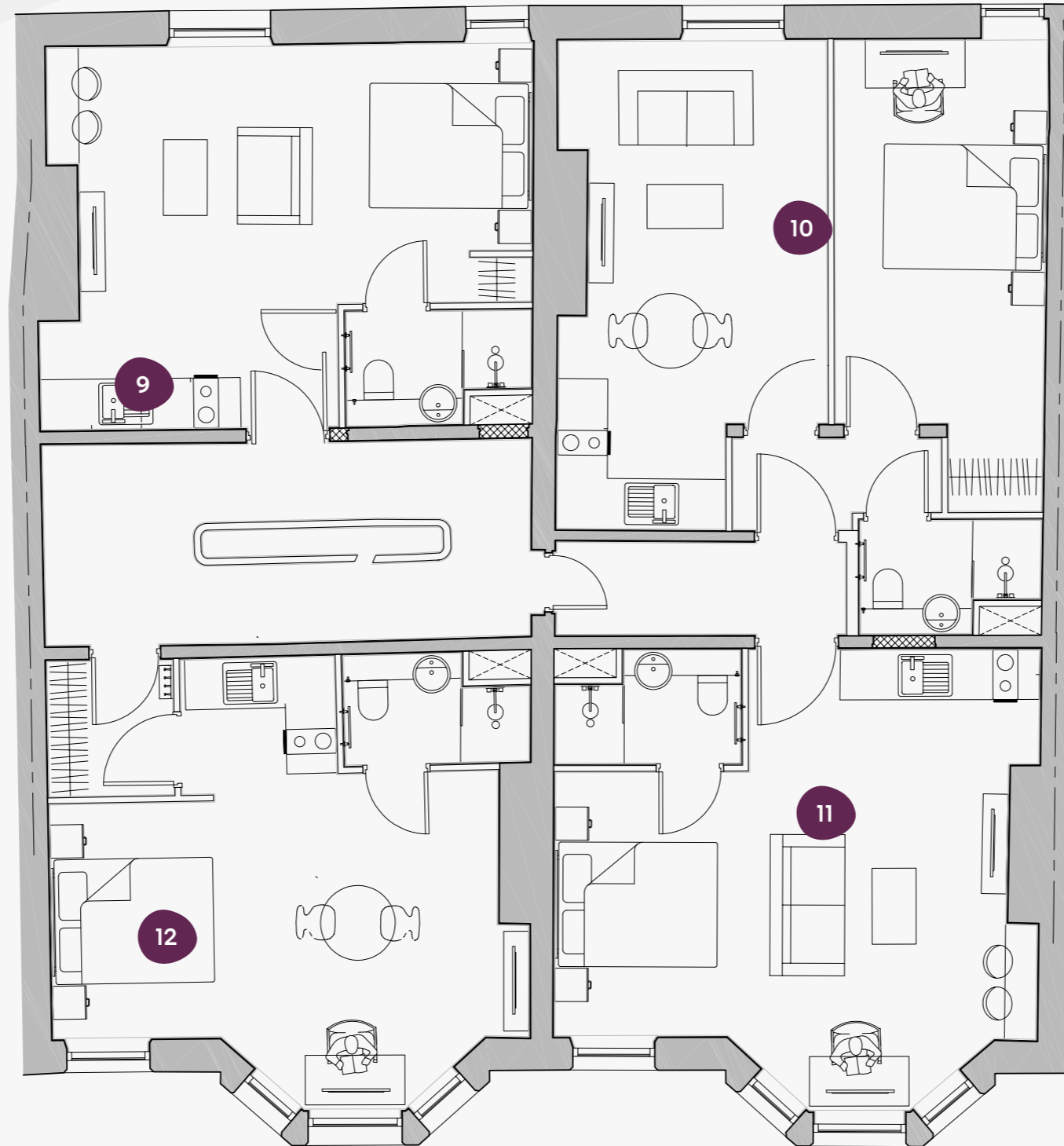
G

Ground Floor

47-49 East Parade,
Harrogate, HG1 5LQ

Flat	Size (sqm)
5	26.36
6	37.80
7	28.18
8	24.78

47-49 East Parade



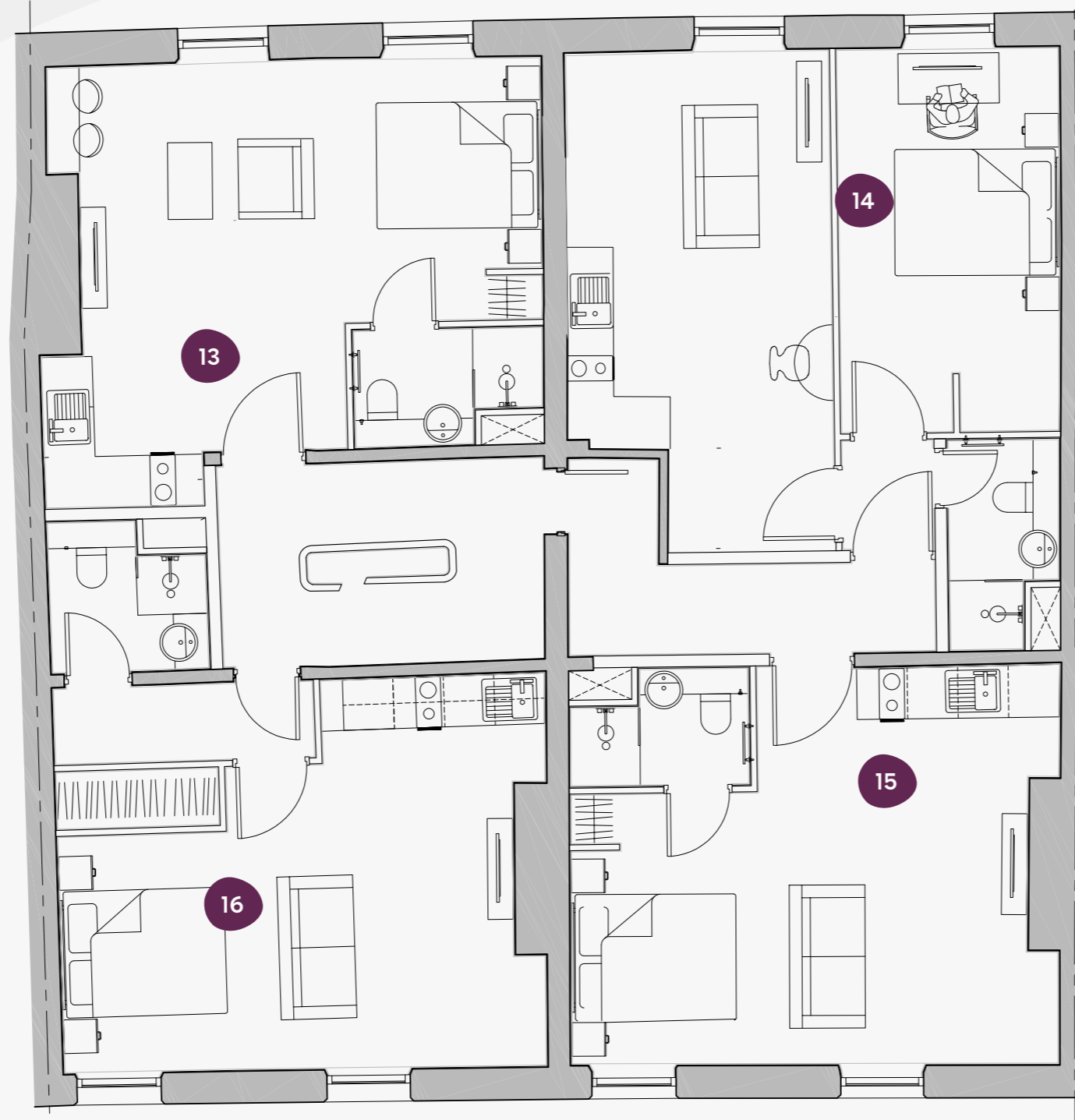
1

First Floor

47-49 East Parade,
Harrogate, HG1 5LQ

Flat	Size (sqm)
9	26.58
10	37.05
11	28.8
12	28.04

47-49 East Parade



2

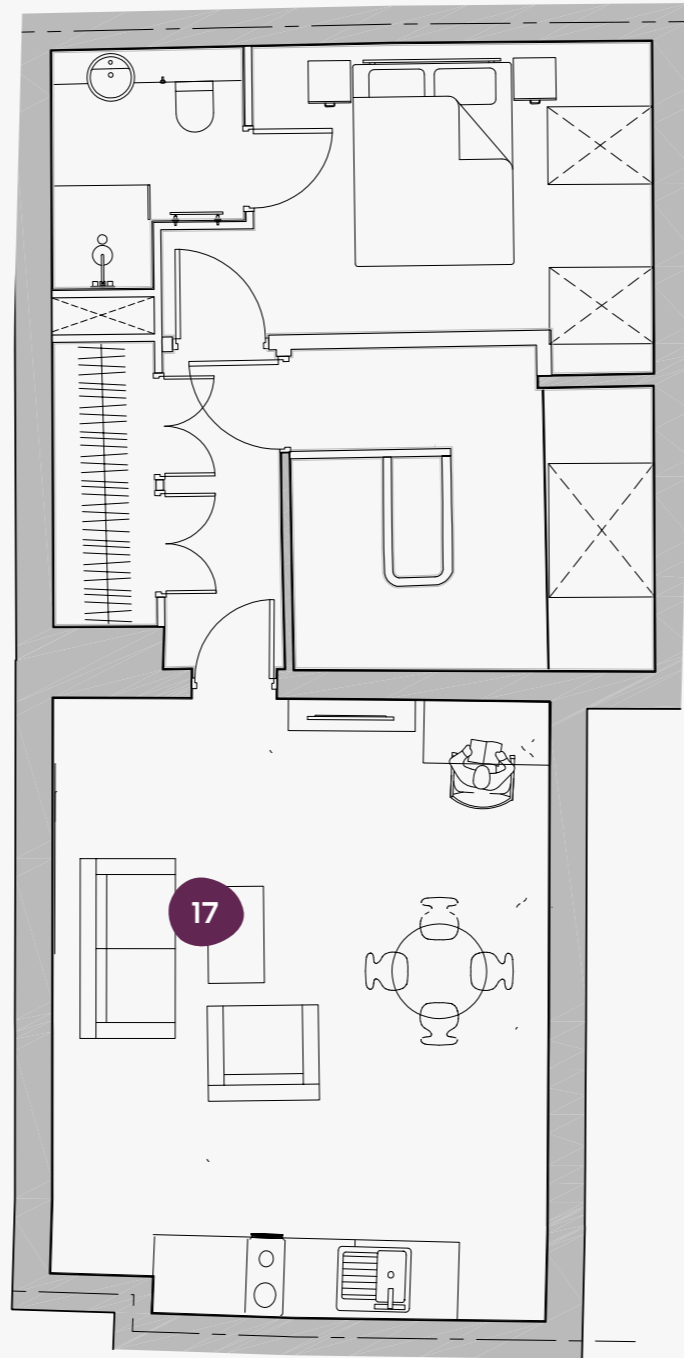


Second Floor

47-49 East Parade,
Harrogate, HG1 5LQ

Flat	Size (sqm)
13	27.88
14	33.11
15	26.96
16	30.07

47-49 East Parade



3



Third Floor

47-49 East Parade,
Harrogate, HG1 5LQ

Flat	Size (sqm)
17	49.72



MONTPELLIER
SOLD
www.montpellierproperty.com 0142

Book online today at ypp.co.uk
info@ypp.co.uk | 01904 627 065