



27 Hyde Terrace Floor Plans

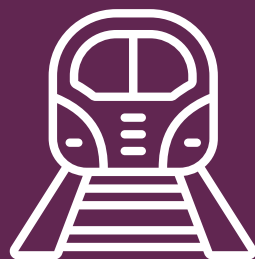
The new way of living.

Located just off the popular Clarendon Road, this property is ideally located for easy access to the city centre and university campuses. Just a short walk from the buzz of Hyde Park, you will also be in the perfect place for summer, amongst the busy student atmosphere, full of shops, bars and

Building features.



0.1km from
University of Leeds



1.6km from
train station



Utility bills
included



Internet
included



Popular
student location



Great
transport links

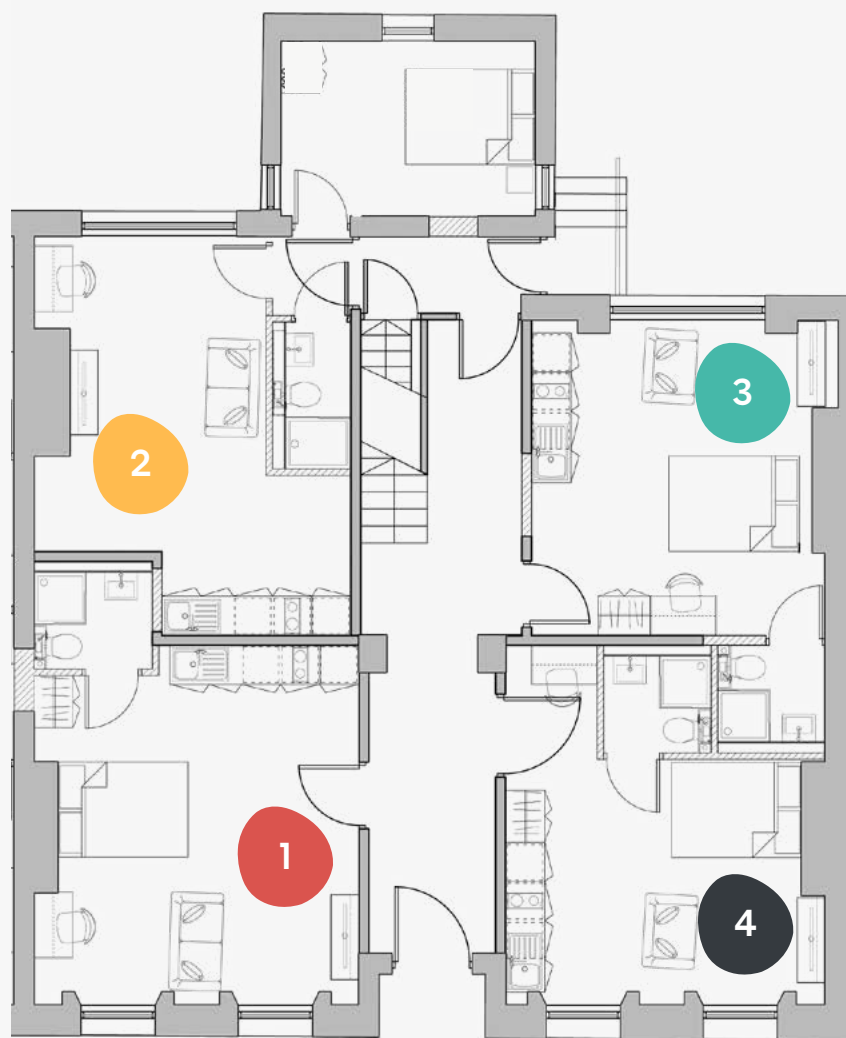


Secure
code entry



Short walk
to city centre

27 Hyde Terrace



GF



Ground Floor

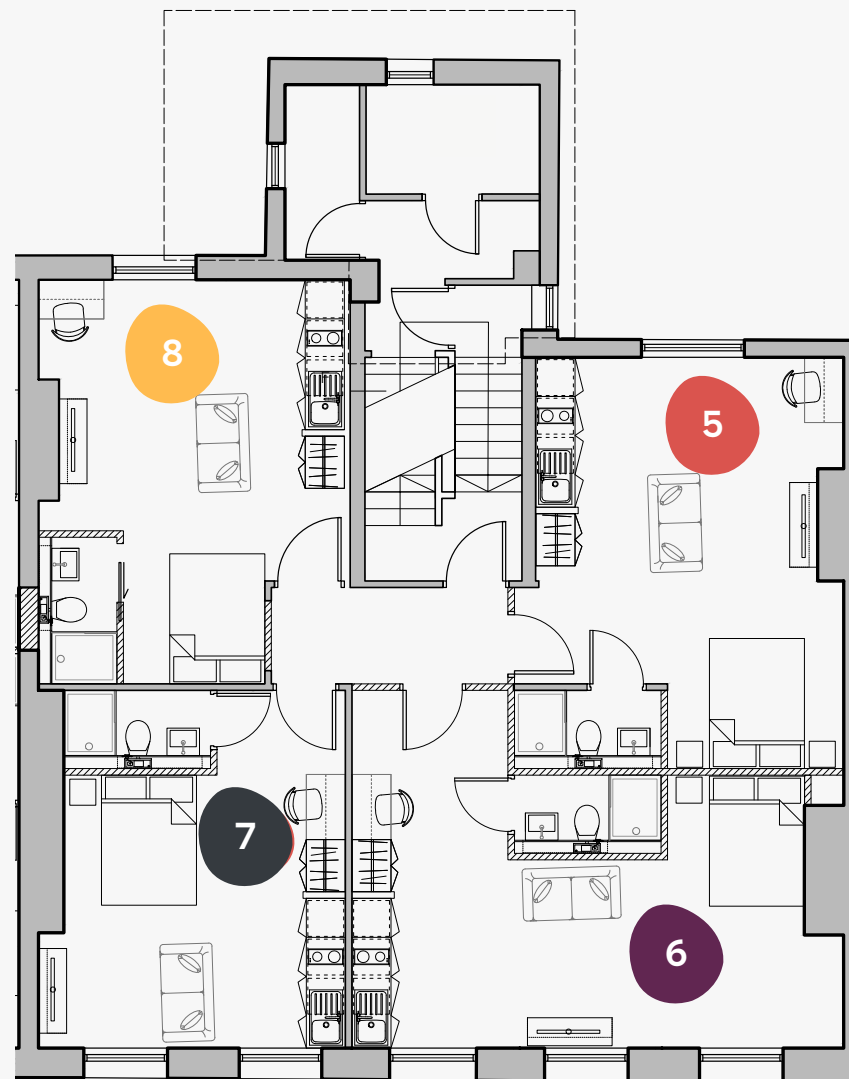
27 Hyde Terrace, Leeds,
LS2 9BY

-  Superior
-  Deluxe
-  Executive
-  Premium
-  Classic

Flat Size (sqm)

1	29.0
2	37.0
3	25.0
4	23.0

27 Hyde Terrace



1



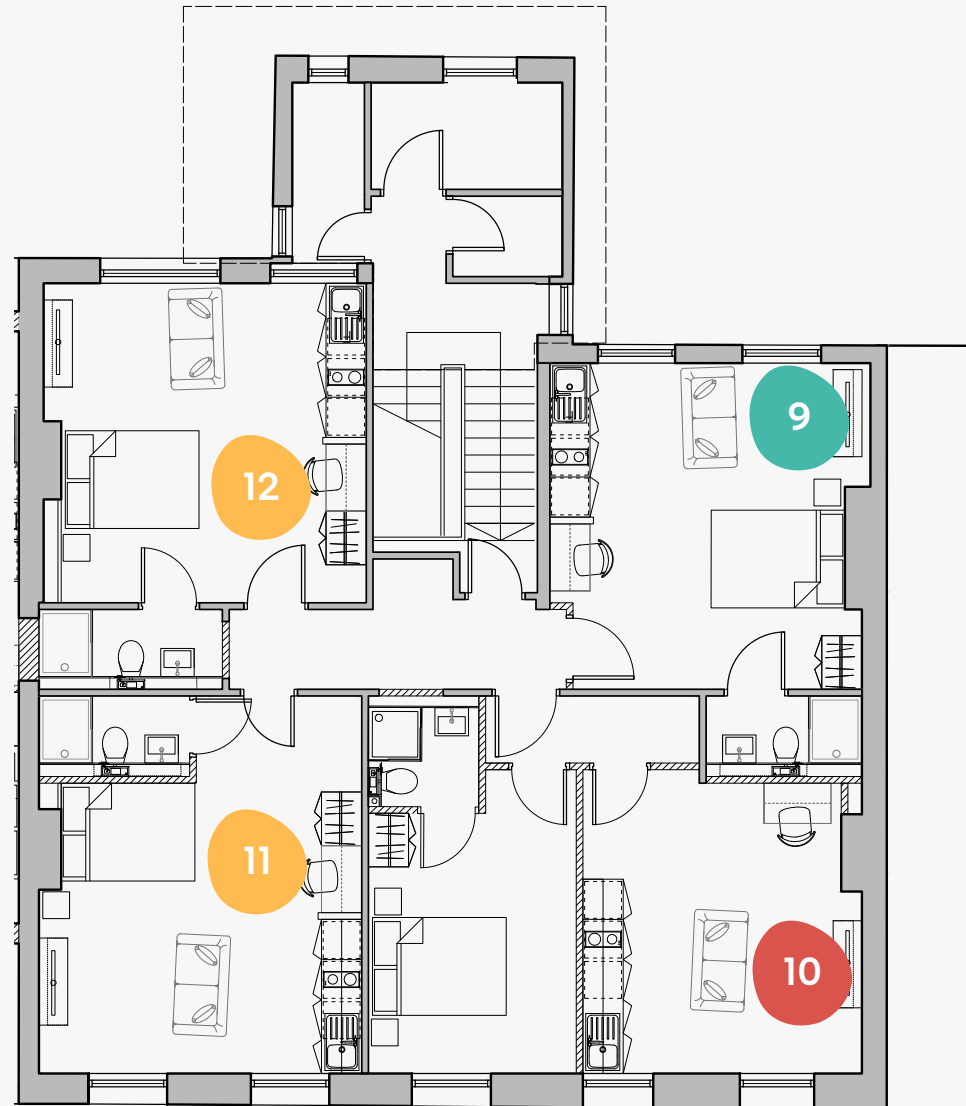
First Floor

27 Hyde Terrace, Leeds,
LS2 9BY

-  Superior
-  Deluxe
-  Executive
-  Premium
-  Classic

Flat	Size (sqm)
5	29.0
6	33.0
7	24.0
8	27.0

27 Hyde Terrace



2



Second Floor

27 Hyde Terrace, Leeds,
LS2 9BY

-  Superior
-  Deluxe
-  Executive
-  Premium
-  Classic

Flat	Size (sqm)
9	25.0
10	38.0
11	27.0
12	26.0



Book online today at ypp.co.uk
info@ypp.co.uk | 0113 2444 666