



# 25 Hyde Terrace Floor Plans



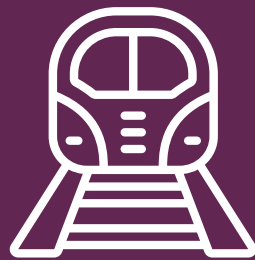
# The new way of living.

Located just off the popular Clarendon Road, this property is ideally located for easy access to the city centre and university campuses. Just a short walk from the buzz of Hyde Park, you will also be in the perfect place for summer, amongst the busy student atmosphere, full of shops, bars and

## Building features.



0.1km from  
University of Leeds



1.6km from  
train station



Utility bills  
included



Internet  
included



Popular  
student location



Great  
transport links

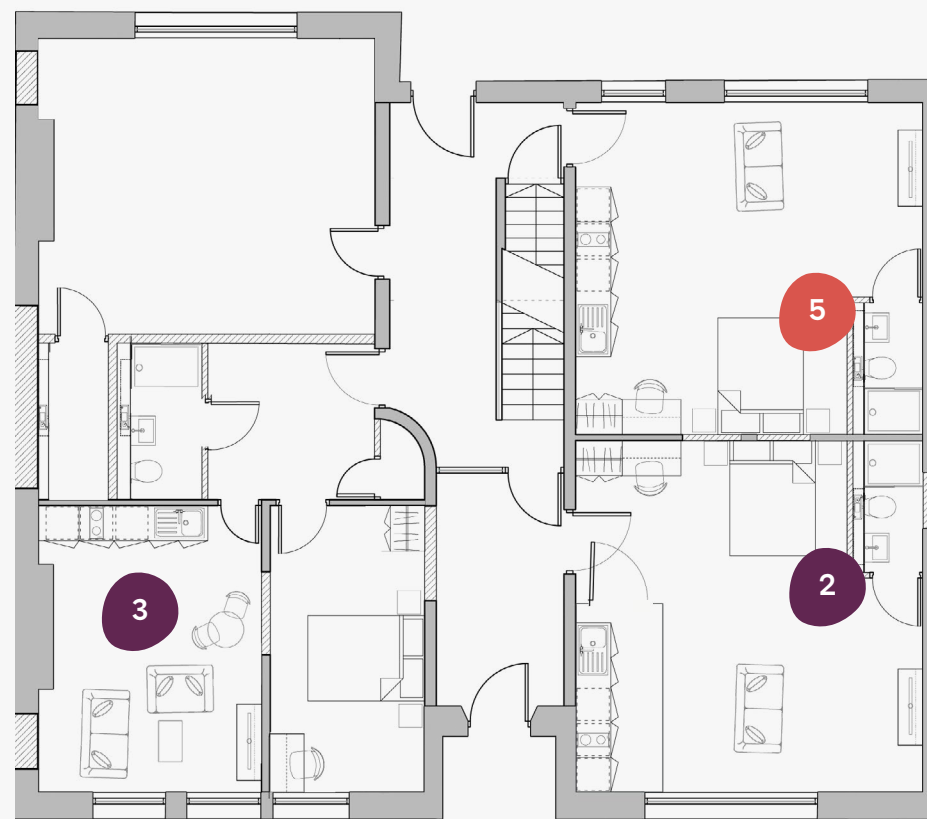


Secure  
code entry



Short walk  
to city centre

# 25 Hyde Terrace



**GF**



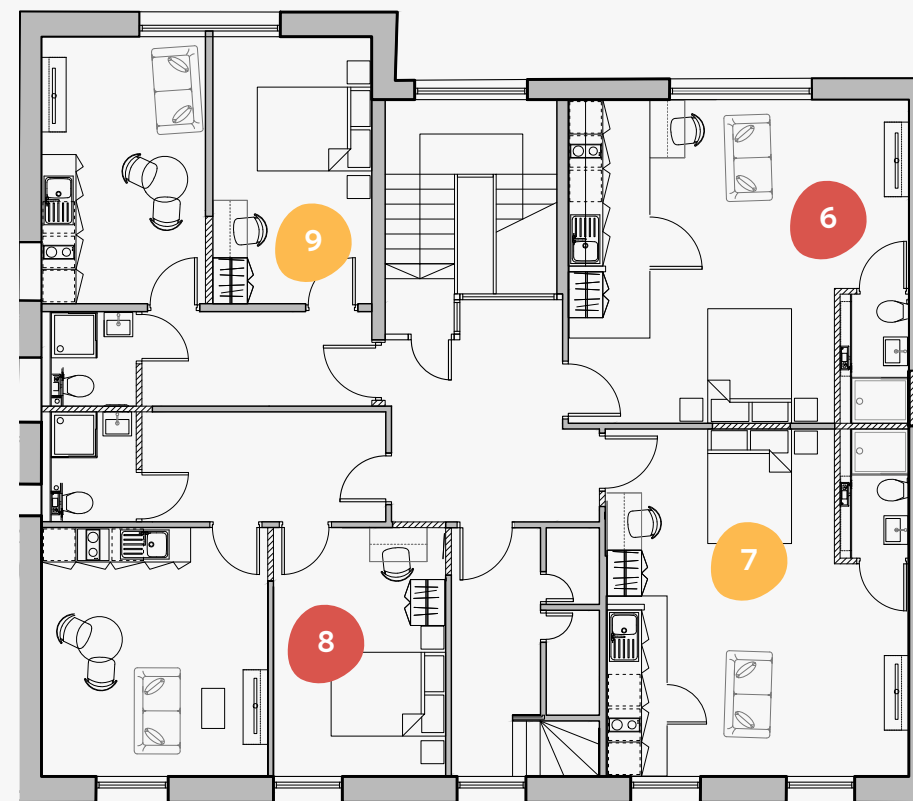
## Ground Floor

25 Hyde Terrace,  
Leeds, LS2 9BY

-  Superior
-  Deluxe
-  Executive
-  Premium
-  Classic

Flat	Size (sqm)
2	37.0
3	45.0
5	34.0

# 25 Hyde Terrace



1



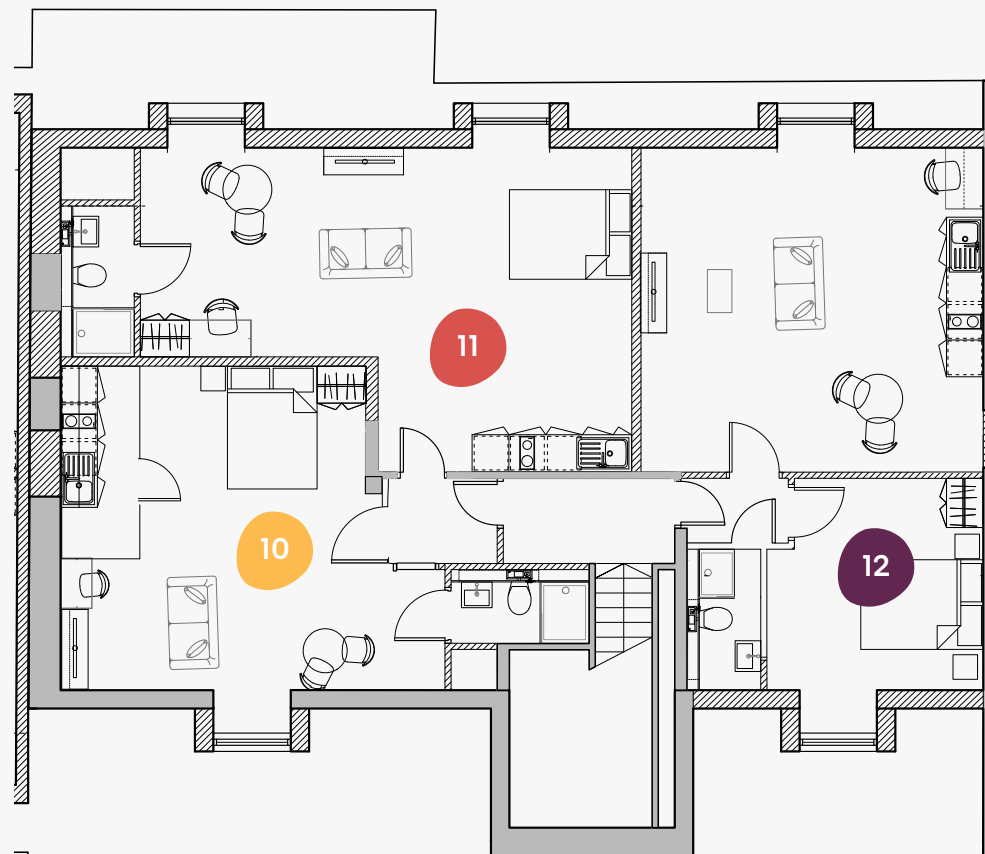
## First Floor

25 Hyde Terrace,  
Leeds, LS2 9BY

-  Superior
-  Deluxe
-  Executive
-  Premium
-  Classic

Flat	Size (sqm)
6	33.0
7	32.0
8	43.0
9	37.0

# 25 Hyde Terrace



## 2

### Second Floor

25 Hyde Terrace,  
Leeds, LS2 9BY

-  Superior
-  Deluxe
-  Executive
-  Premium
-  Classic

Flat	Size (sqm)
10	32.0
11	34.0
12	45.0





Book online today at [ypp.co.uk](https://ypp.co.uk)  
info@ypp.co.uk | 0113 2444 666