



# 19 Regent Park Terrace Floor Plans

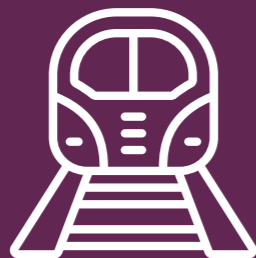
# The new way of living.

Set just behind the shops, bars and pubs of Hyde Park, this property is perfectly located close to amenities and transport links. Just a short walk to university campuses and Leeds city centre, it's great for students or professionals. With gas, water and electric included you don't even need to worry about setting up your utility bills.

## Building features.



1.2km from  
University of Leeds



1.2km from  
train station



Great transport  
links



Utility bills  
included

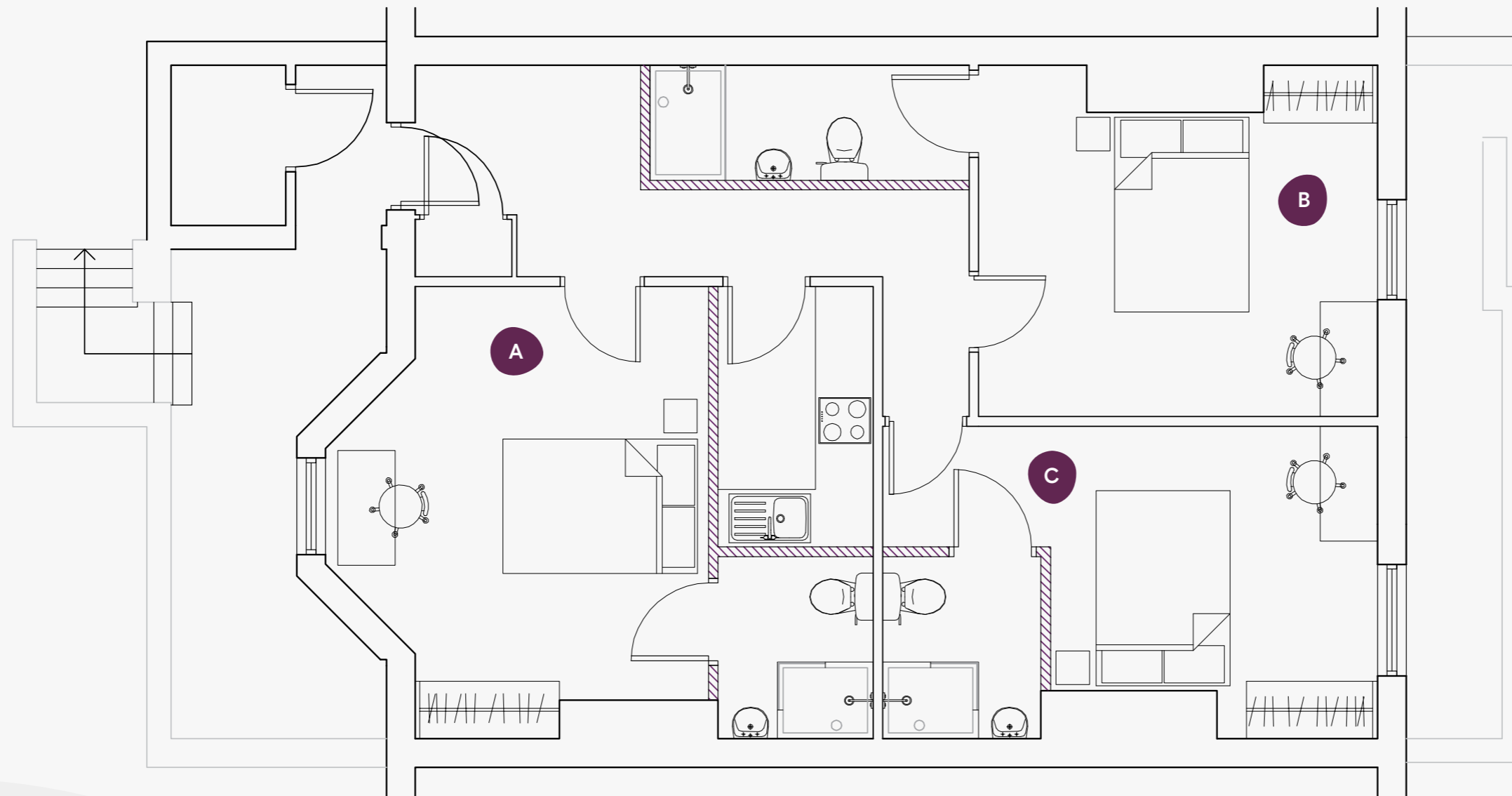


Permit parking  
available



Popular  
student location

# 19 Regent Park Terrace



**LG**



**Lower Ground**

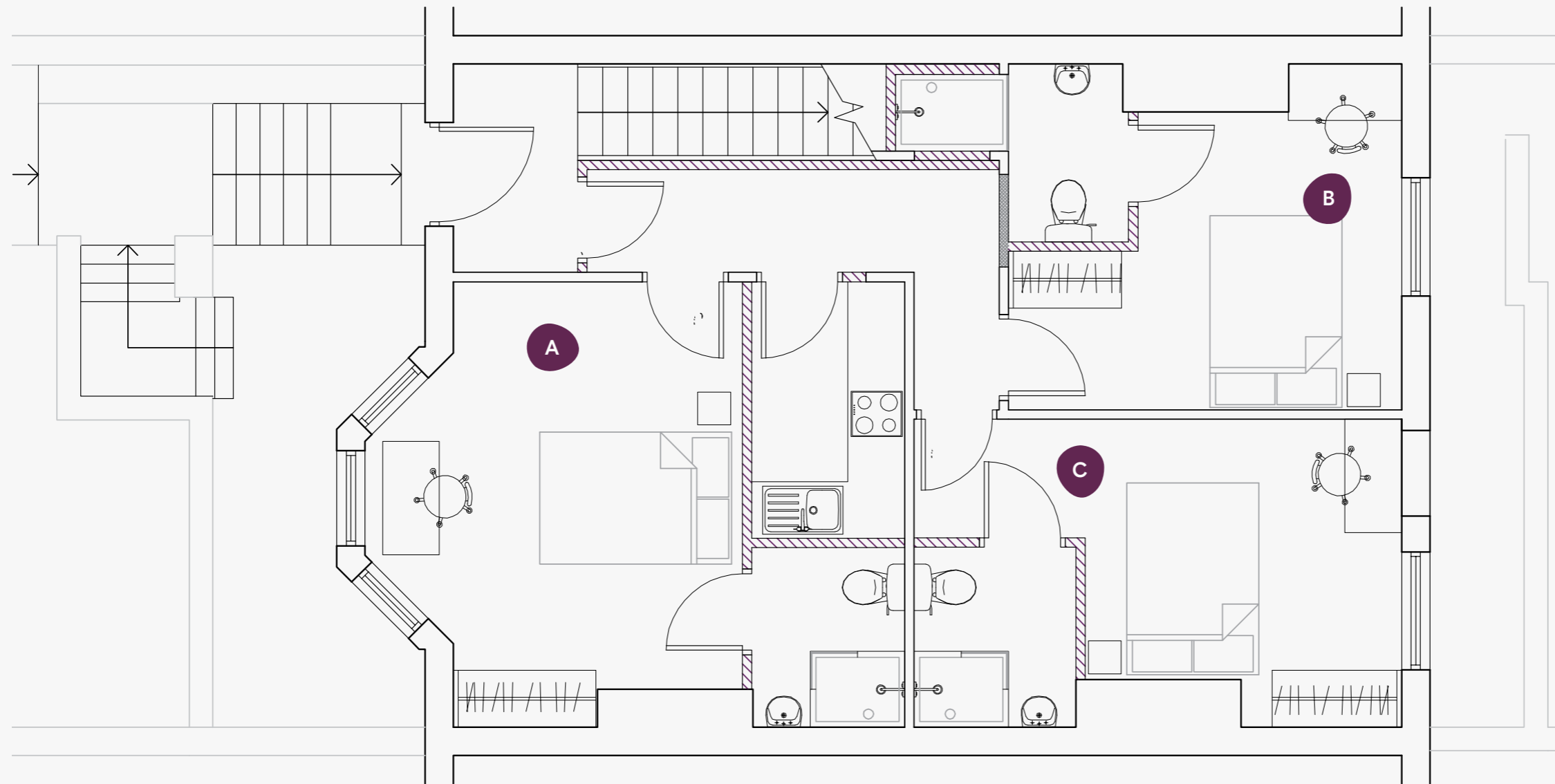
19 Regent Park Terrace,  
Leeds, LS6 2AX

Room      Size (sqm)

A	14.3
B	14.3
C	12.4

**Flat one-70 sqm**

# 19 Regent Park Terrace



**GF**



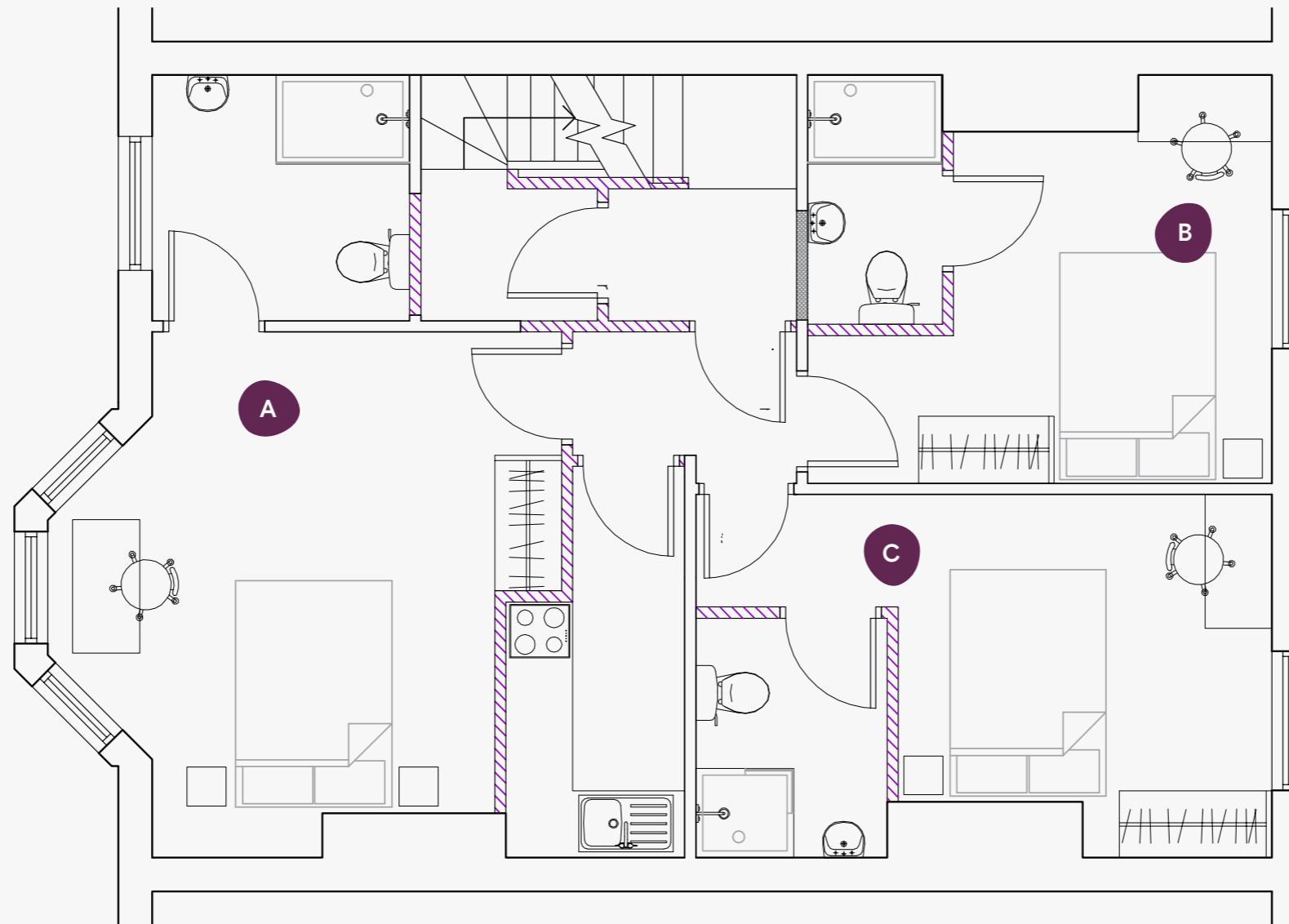
**Ground Floor**

19 Regent Park Terrace,  
Leeds, LS6 2AX

Room	Size (sqm)
A	15.8
B	11.7
C	12.3

**Flat two-63.4 sqm**

# 19 Regent Park Terrace



1



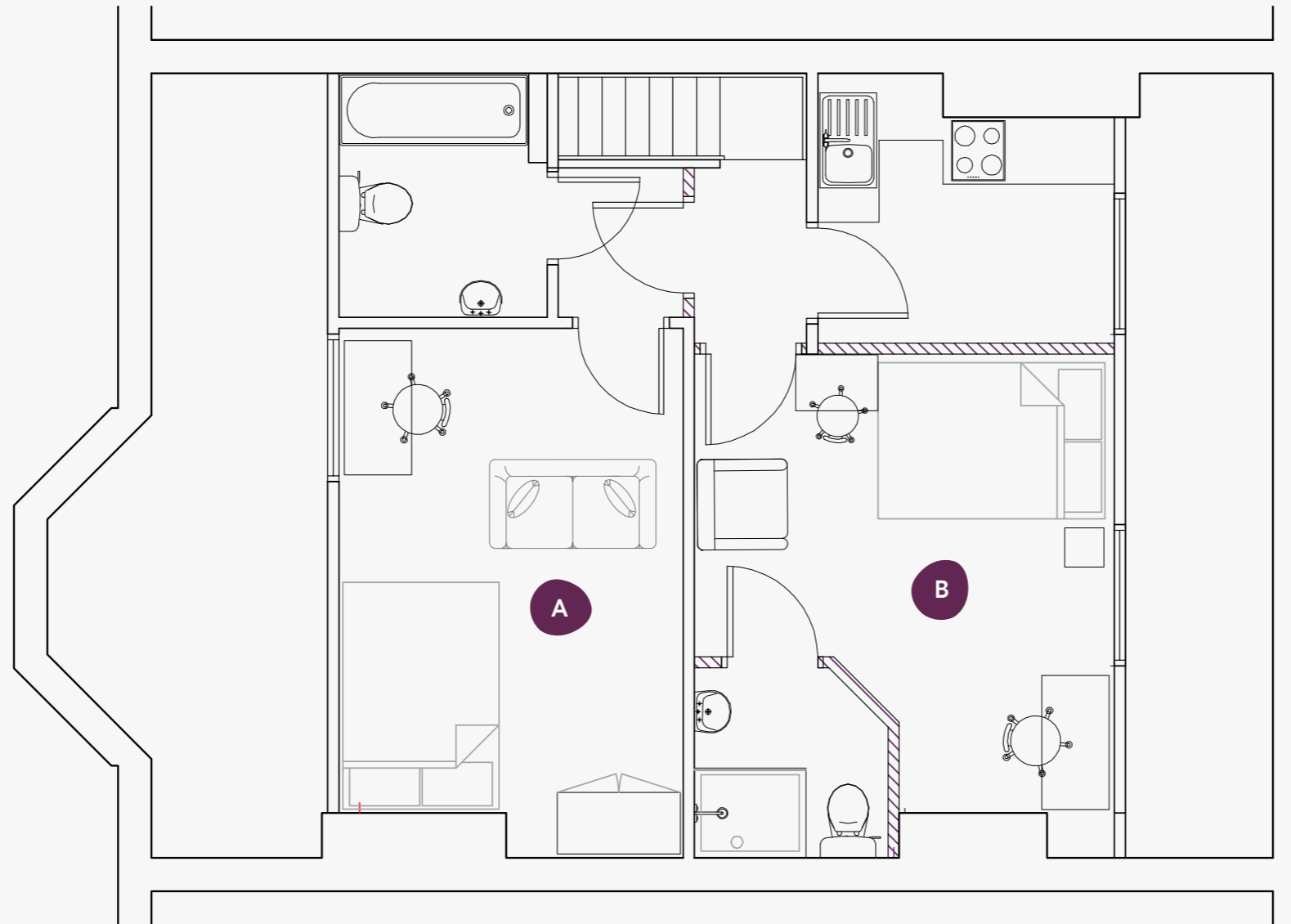
## First Floor

19 Regent Park Terrace,  
Leeds, LS6 2AX

Room	Size (sqm)
A	17.3
B	11.3
C	11.9

Flat three-61.9 sqm

# 19 Regent Park Terrace



2



## Second Floor

19 Regent Park Terrace,  
Leeds, LS6 2AX

Room	Size (sqm)
A	12.5
B	11.7

Flat Four-34 sqm



Book online today at [ypp.co.uk](https://ypp.co.uk)  
info@ypp.co.uk | 0113 2444 666