



18 East Parade Floor Plans

The new way of living.

Located just off The Headrow, this property is in a prime location surrounded by shopping centres, nightlife and the busy atmosphere of the city centre. With everything on your doorstep, including Leeds Train Station and university campuses, this sought after property is not one to miss!

Building features.



0.5km from
University of Leeds



0.6km from
train station



Internet
included



City centre
location



Great transport
links

18 East Parade

1

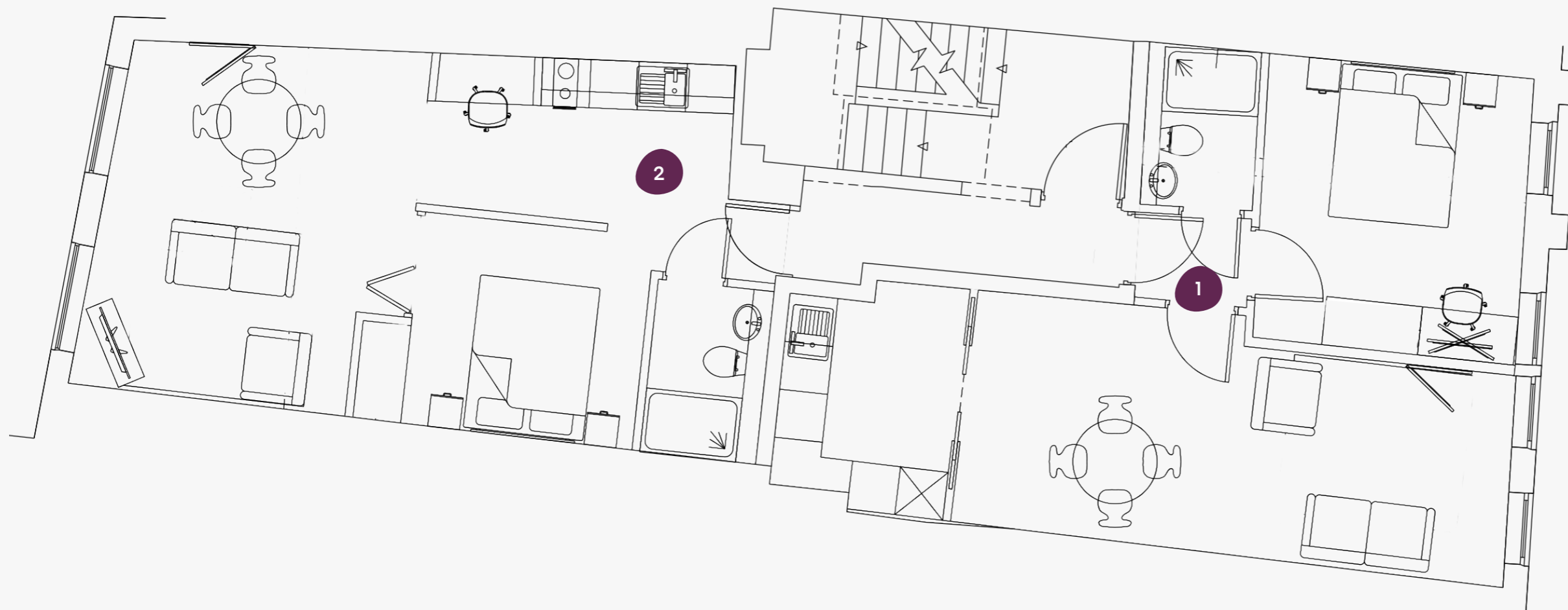


First Floor

18 East Parade, Leeds,
LS1 2BH

Flat Size (sqm)

1	39.9
2	39.2



18 East Parade

2

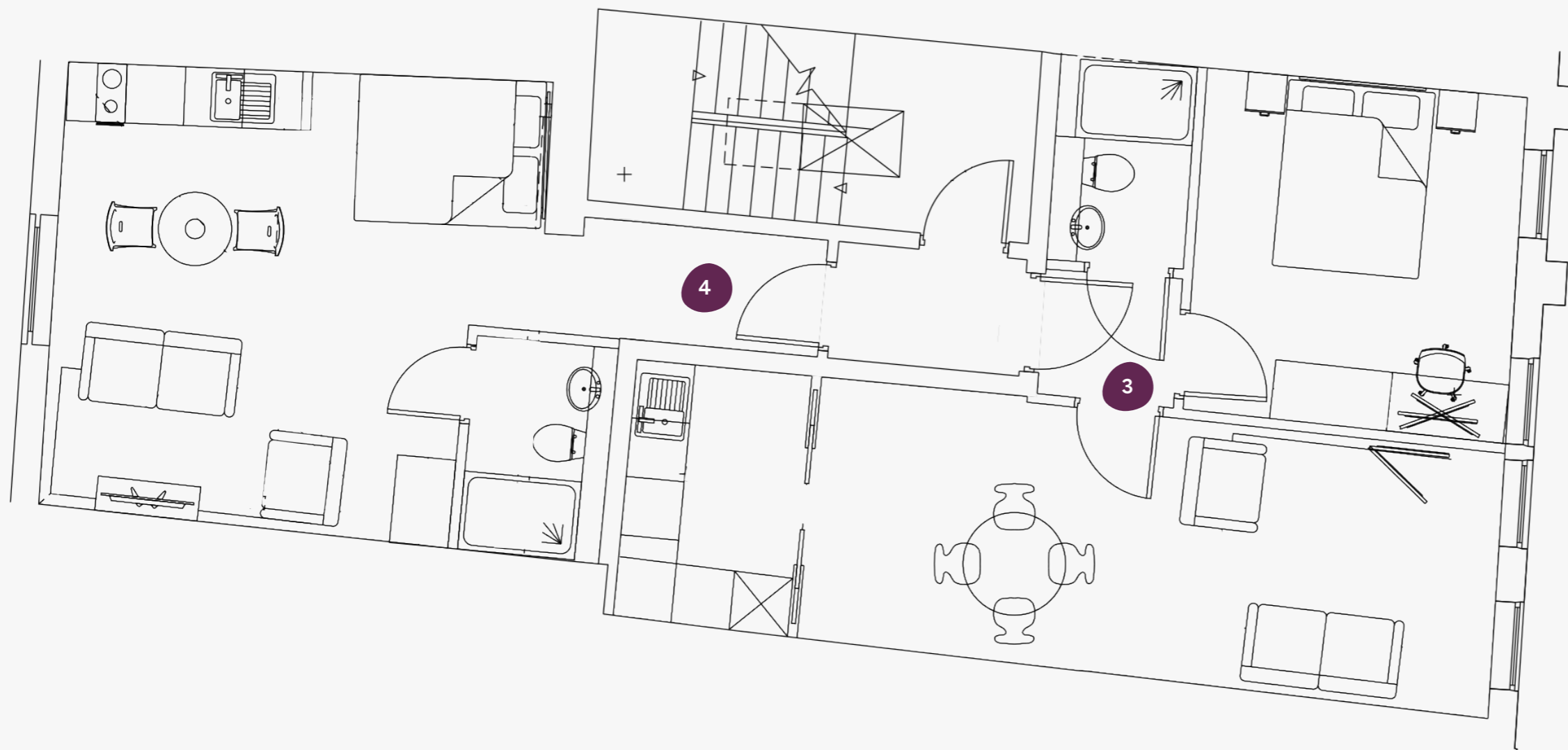


Second Floor

18 East Parade, Leeds,
LS1 2BH

Flat Size (sqm)

3	39.9
4	27.1



18 East Parade

3



Third Floor

18 East Parade, Leeds,
LS1 2BH

Flat Size (sqm)

5	34.3
---	------





Book online today at ypp.co.uk
info@ypp.co.uk | 0113 2444 666