
THE BALSA



SAMPLE INTERIOR



ELEVATION A

6 BLOCK ELEVATION

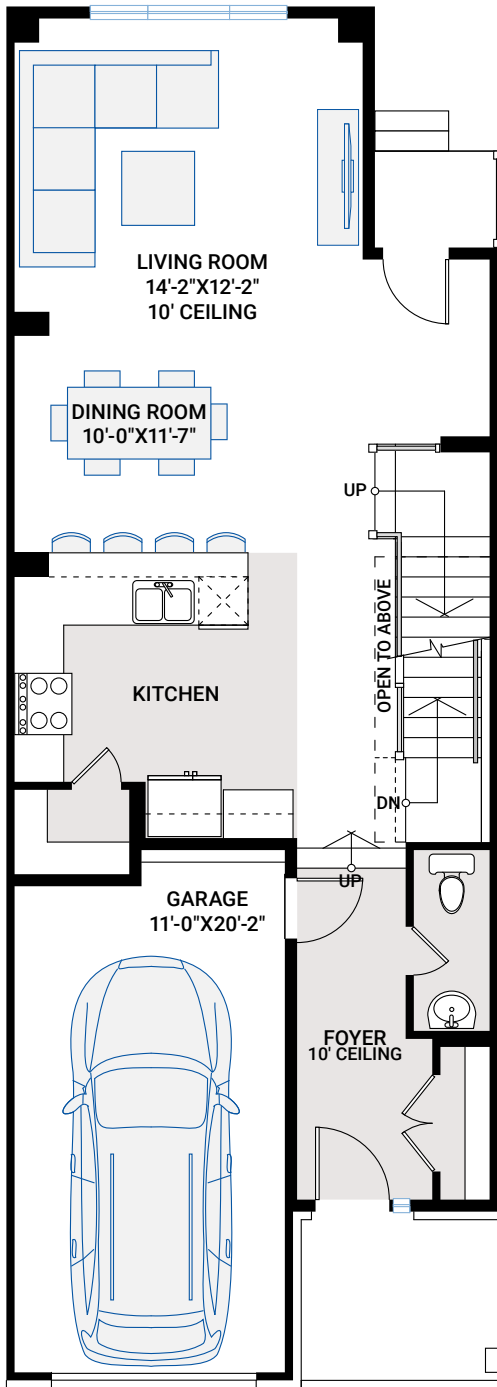


ELEVATION B

4 BLOCK ELEVATION

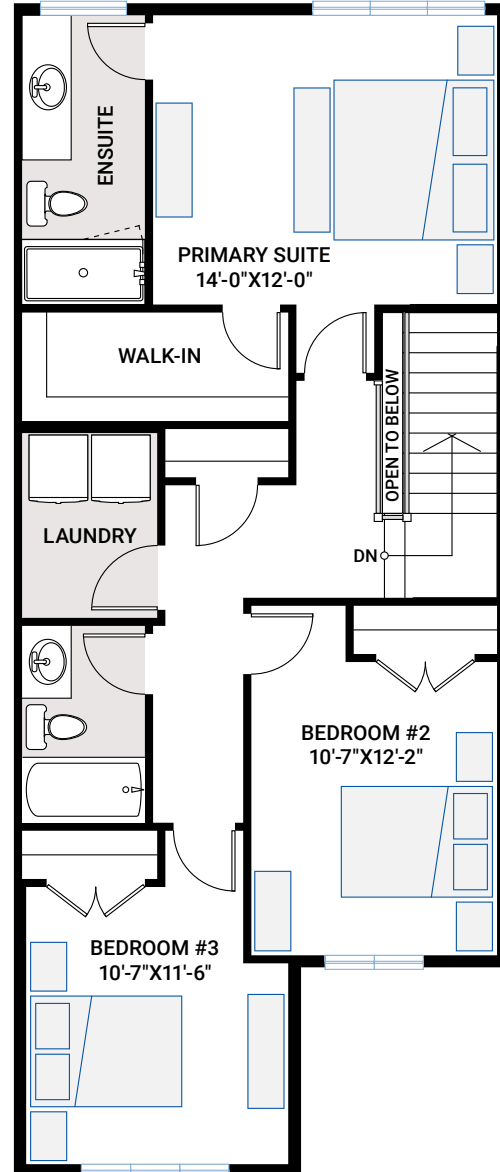
MAIN FLOOR

794 SQ FT



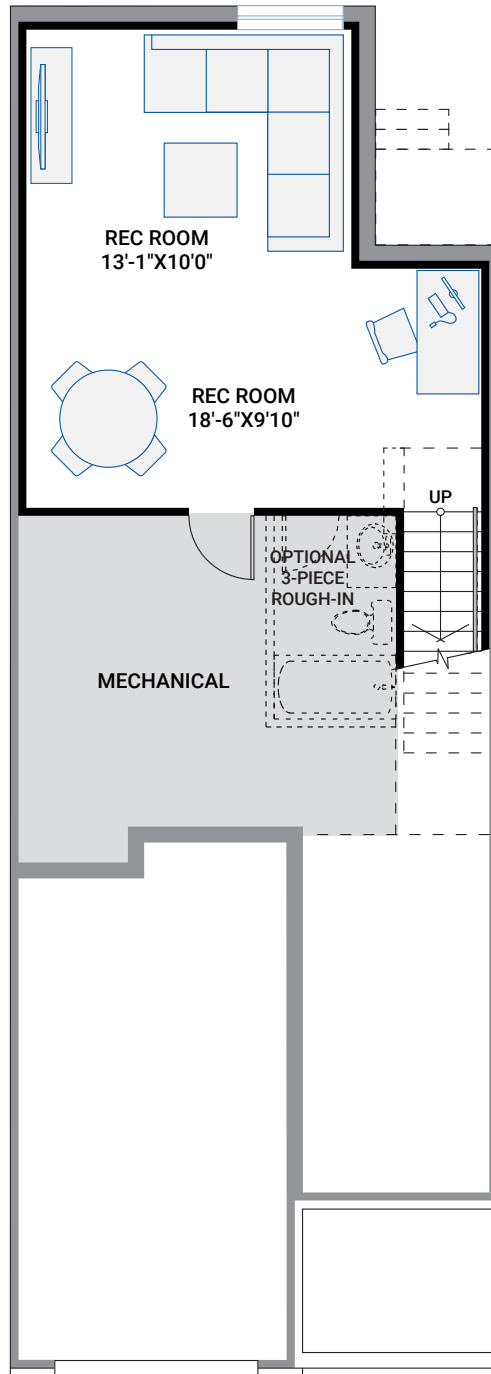
UPPER FLOOR

894 SQ FT

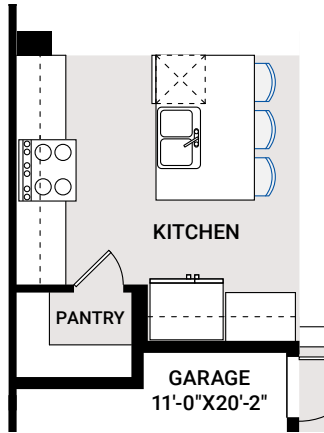


BASEMENT

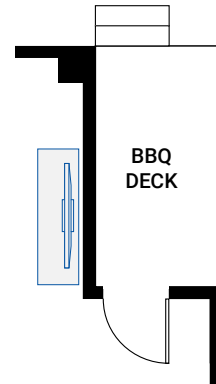
376 SQ FT



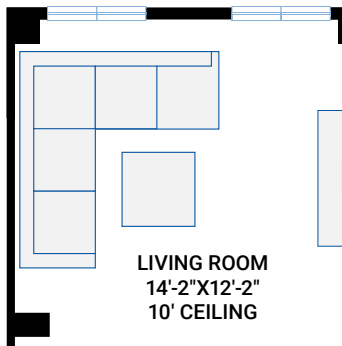
FLOORPLAN OPTIONS



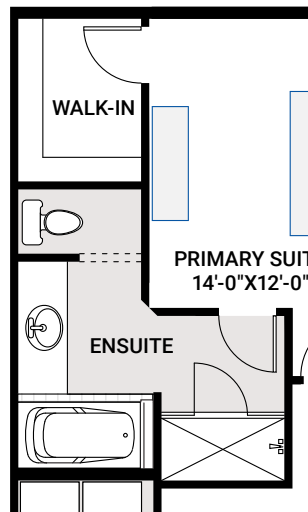
OPTION #2
Alternate Kitchen



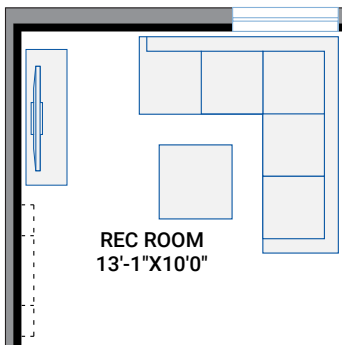
OPTION #9B
BBQ Deck
- only available with elevations 'A2' and 'B2'
- adds 51 sq ft



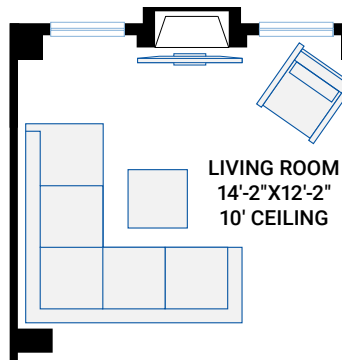
OPTION #13
Alternate Living Room Window
- not available with Option #6



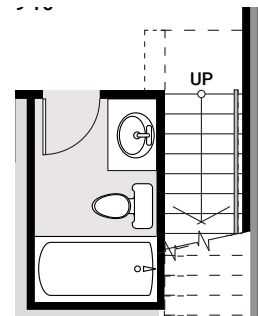
OPTION #3
Alternate Ensuite



OPTION #6A
Basement Electric Fireplace
- not available with Option #13



OPTION #6
Living Room Gas Fireplace
- not available with Option #13



OPTION #15
Basement Bathroom
- not available on all lots
- adds 47 sq ft