
THE SEASIDE



FARMHOUSE



CRAFTSMAN



COASTAL

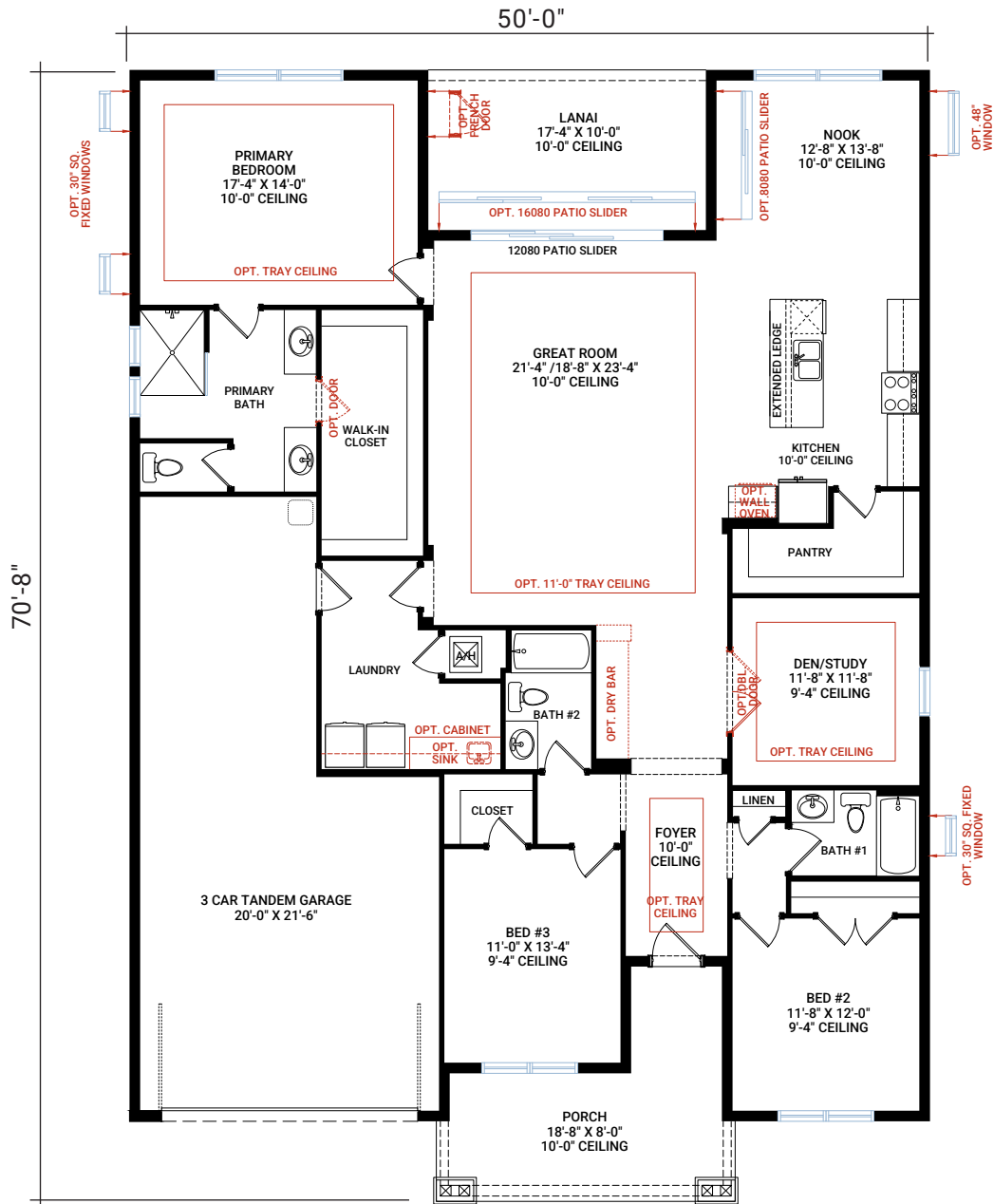


2,400 SQ FT | 3-4 BED | 3 BATH

CARDEL
HOMES

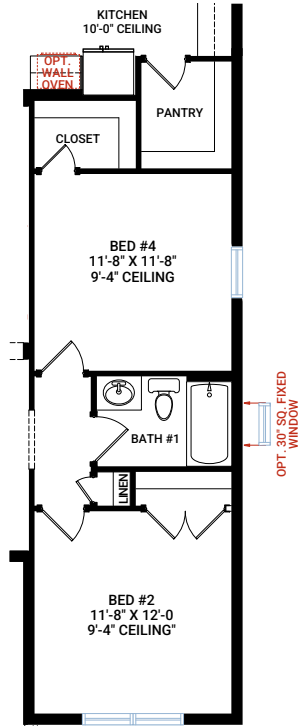
MAIN FLOOR

2,400 SQ FT

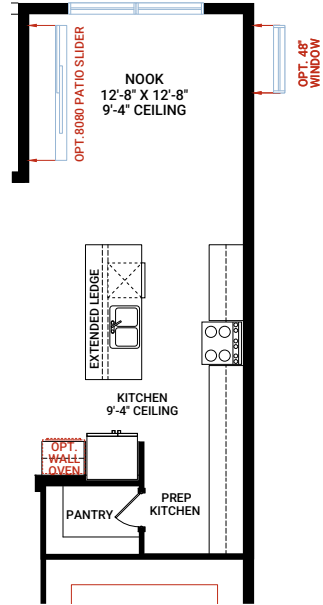


LIVING SPACE	2,400 SQ FT
GARAGE	622 SQ FT
FRONT PORCH	182 SQ FT
LANAI	173 SQ FT
TOTAL UNDER ROOF	3,377 SQ FT

FLOORPLAN OPTIONS

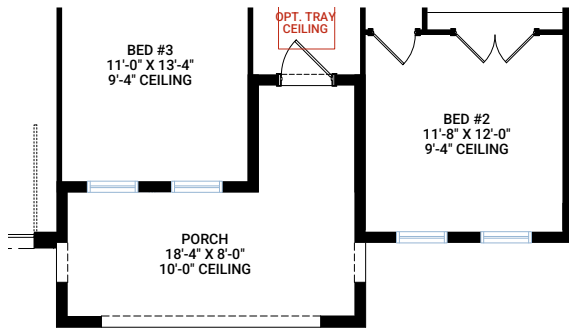


Fourth Bedroom

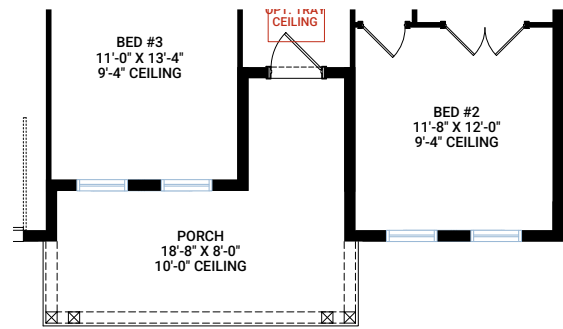


Prep Kitchen

ELEVATIONS



ELEVATION B – COASTAL
- front porch layout details



ELEVATION C – FARMHOUSE
- front porch layout details