
THE SEASIDE 2.0



FARMHOUSE



CRAFTSMAN



COASTAL

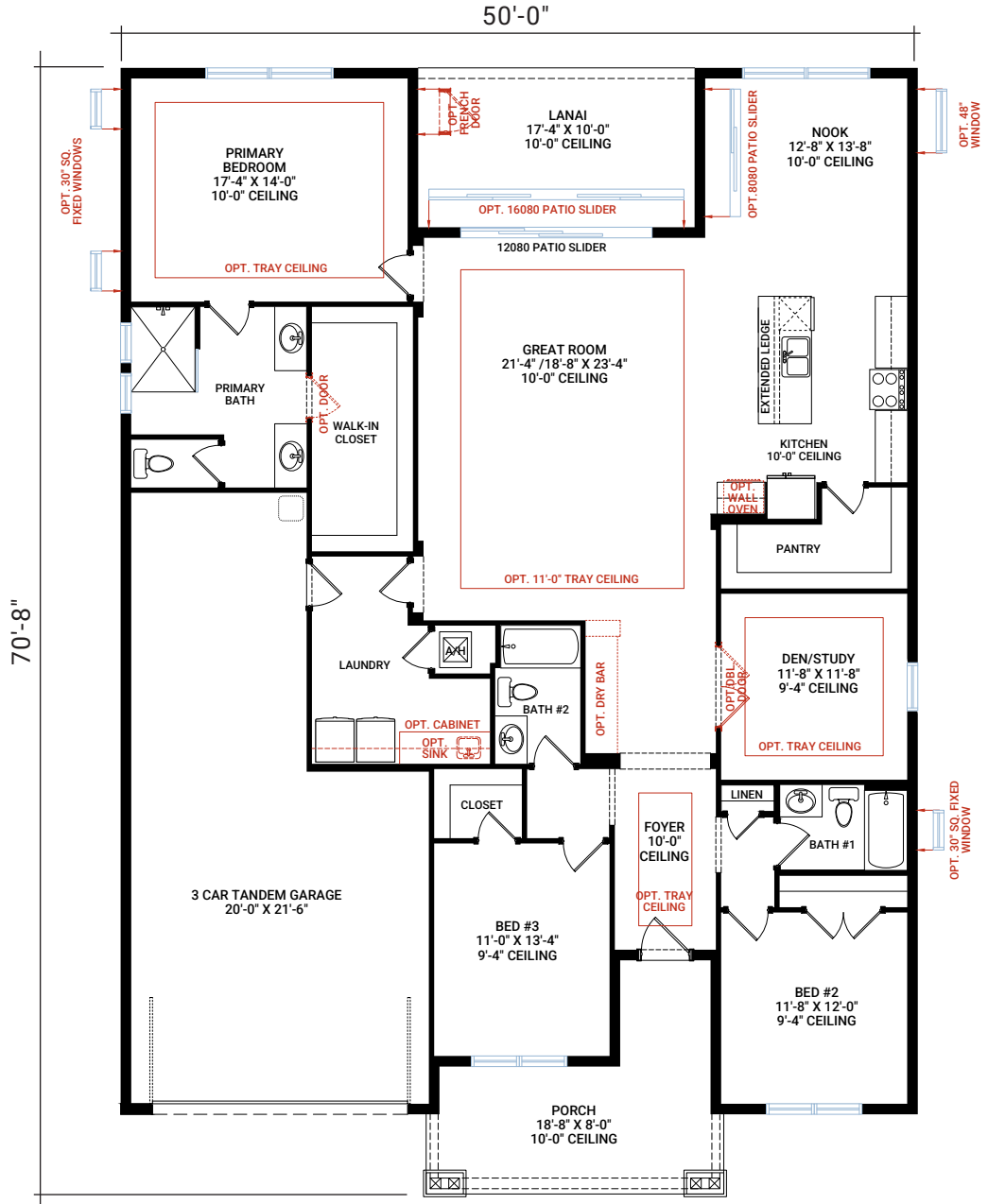


3,172 SQ FT | 4-5 BED | 4 BATH

CARDEL
HOMES

MAIN FLOOR

2,400 SQ FT



MAIN FLOOR	2,400 SQ FT
UPPER FLOOR	772 SQ FT
TOTAL LIVING	3,172 SQ FT
GARAGE	622 SQ FT
FRONT PORCH	182 SQ FT
LANAI	173 SQ FT
TOTAL UNDER ROOF	4,149 SQ FT

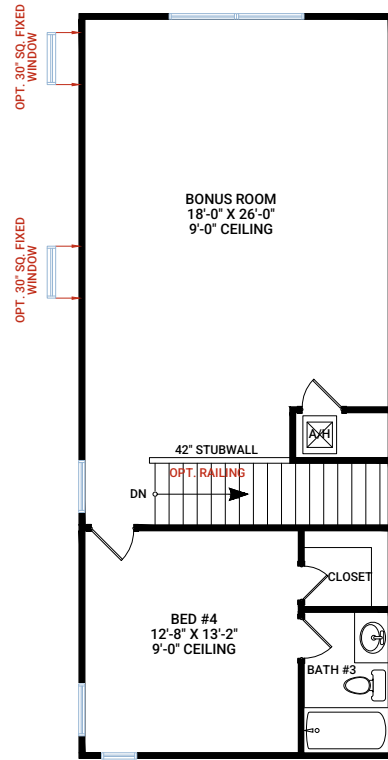
THE SEASIDE 2.0

3,172 SQ FT | 4-5 BED | 4 BATH

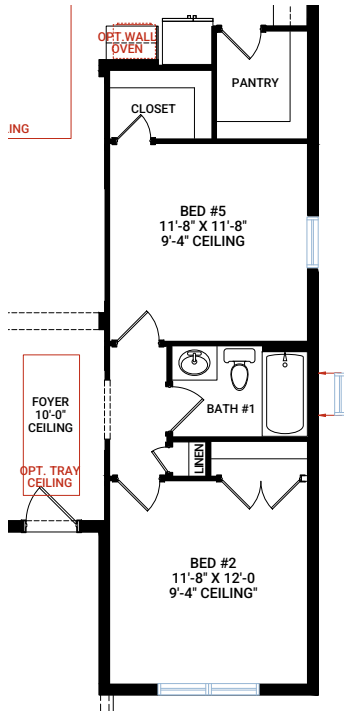
CARDEL
HOMES

UPPER FLOOR

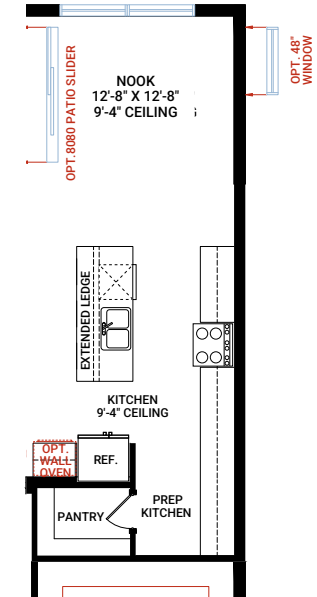
772 SQ FT



FLOORPLAN OPTIONS

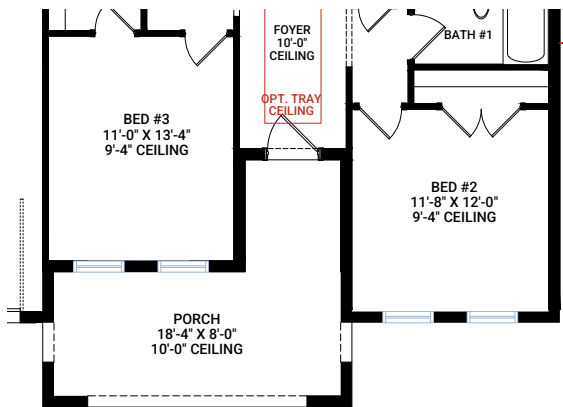


Fifth Bedroom
- cannot be combined with prep kitchen

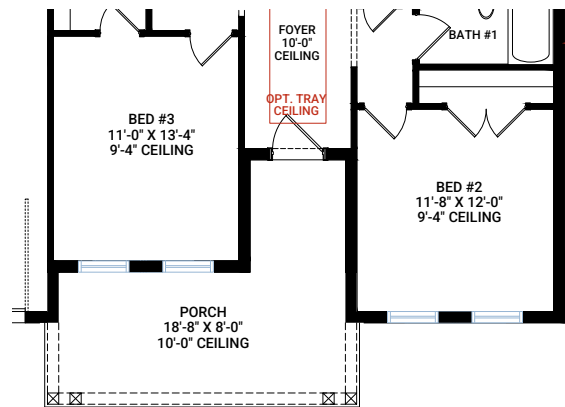


Prep Kitchen

ELEVATIONS



ELEVATION – COASTAL
- front porch layout details
- adds 178 sq ft



ELEVATION – FARMHOUSE
- front porch layout details
- adds 182 sq ft