
THE SAVOY



URBAN MOUNTAIN AP6



MODERN PRAIRIE AP1



MODERN FARMHOUSE AP2



URBAN MOUNTAIN AP3



MODERN FARMHOUSE AP8

ALPINE PARK

2,548 SQ FT | 3 BED | 2.5 BATH

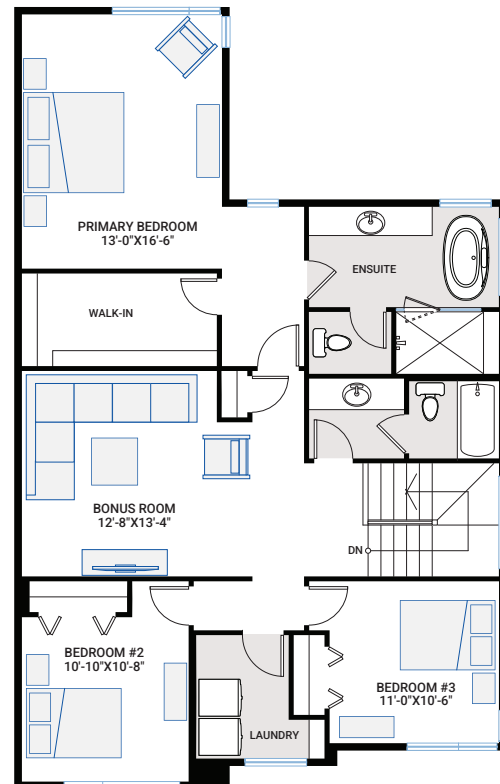
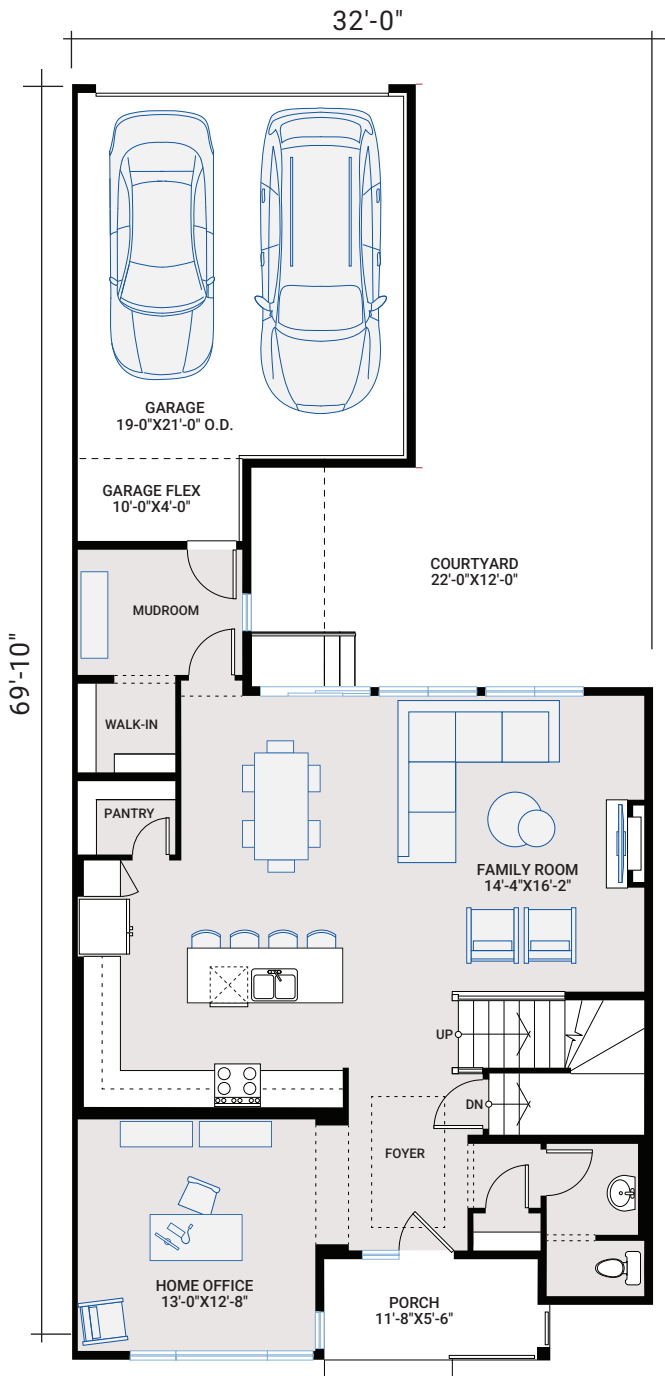
CARDEL
HOMES

MAIN FLOOR

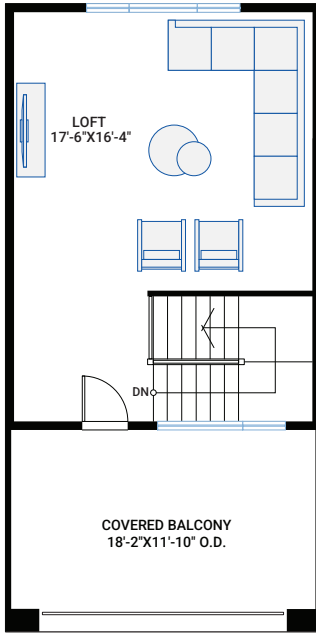
1,175 SQ FT

UPPER FLOOR

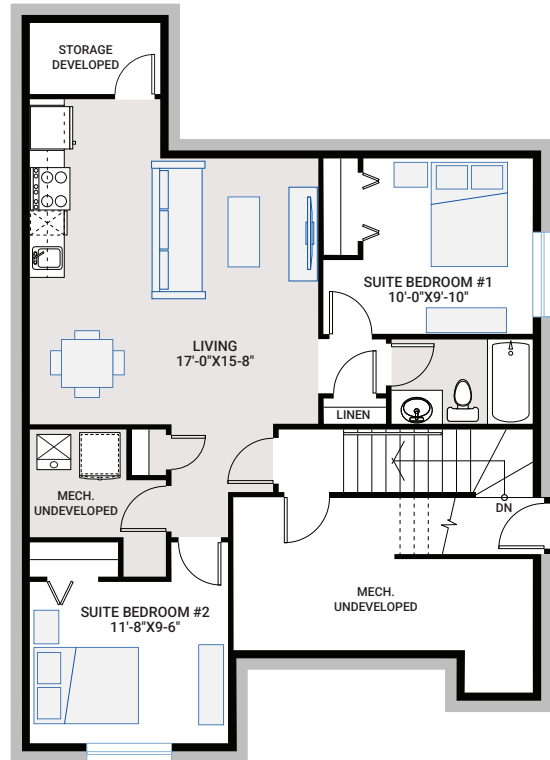
1,363 SQ FT



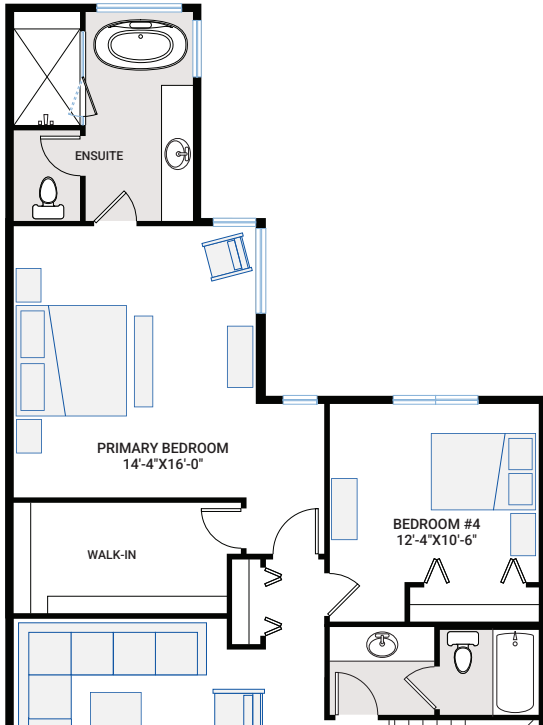
FLOORPLAN OPTIONS



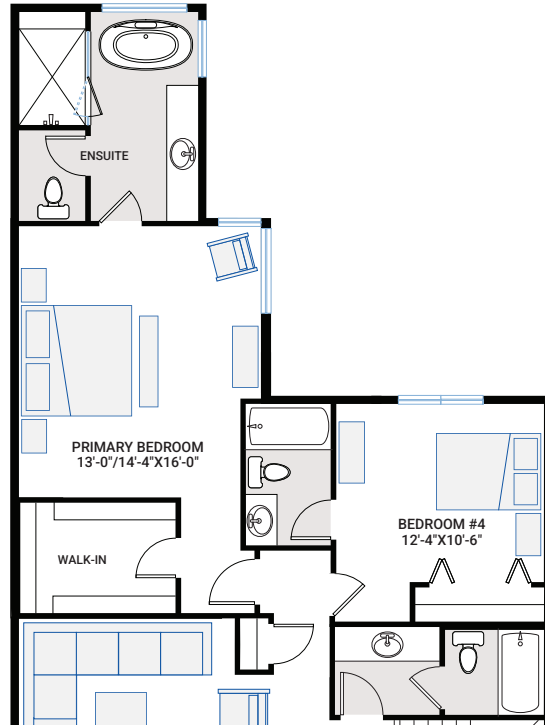
OPTION #5C
Third Floor Loft
 - adds 463 sq ft (including stairs)
 - balcony 219 sq ft
 - includes upgrade to second furnace
 - not available in conjunction with Option #4A or #4B
 - subject to bylaw check of grades to verify maximum height allowed



OPTION #99A
Developed Basement Suite
 - adds 844 sq ft

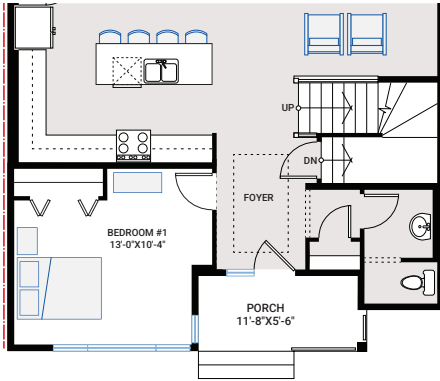


OPTION #04A
Fourth Bedroom
 - adds 193 sq ft

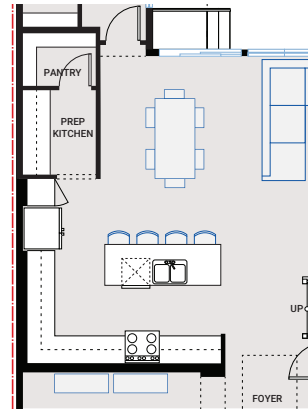


OPTION #04B
Fourth Bedroom With Bath
 - adds 193 sq ft

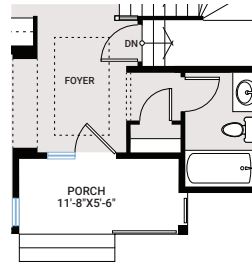
FLOORPLAN OPTIONS



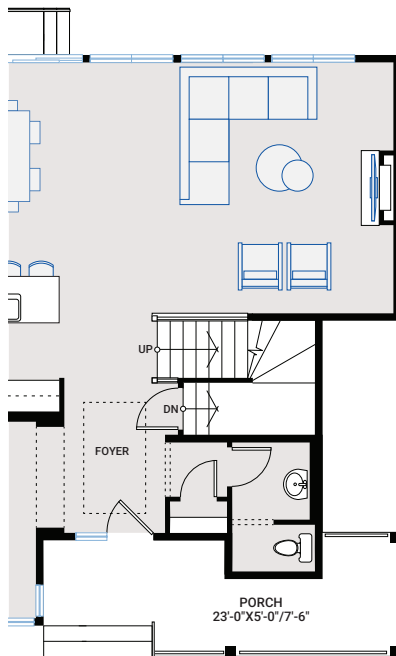
OPTION #03A
Main Floor Bedroom
- no additional sq ft



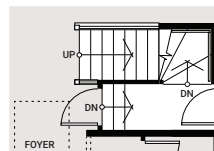
OPTION #02A
Prep Kitchen
- no additional sq ft



OPTION #01A
Main Floor Bathroom
- no additional sq ft



OPTION #03B
Family Room Extension
- adds 86 sq ft
- available for Vintage Wide lots only



OPTION #05A
Exterior Side Entry To Basement
- lot type and grading permitting

OPTION #05B
Non Zero Lot Line