
THE ROWAN



CANADIANA A1



FARMHOUSE A2



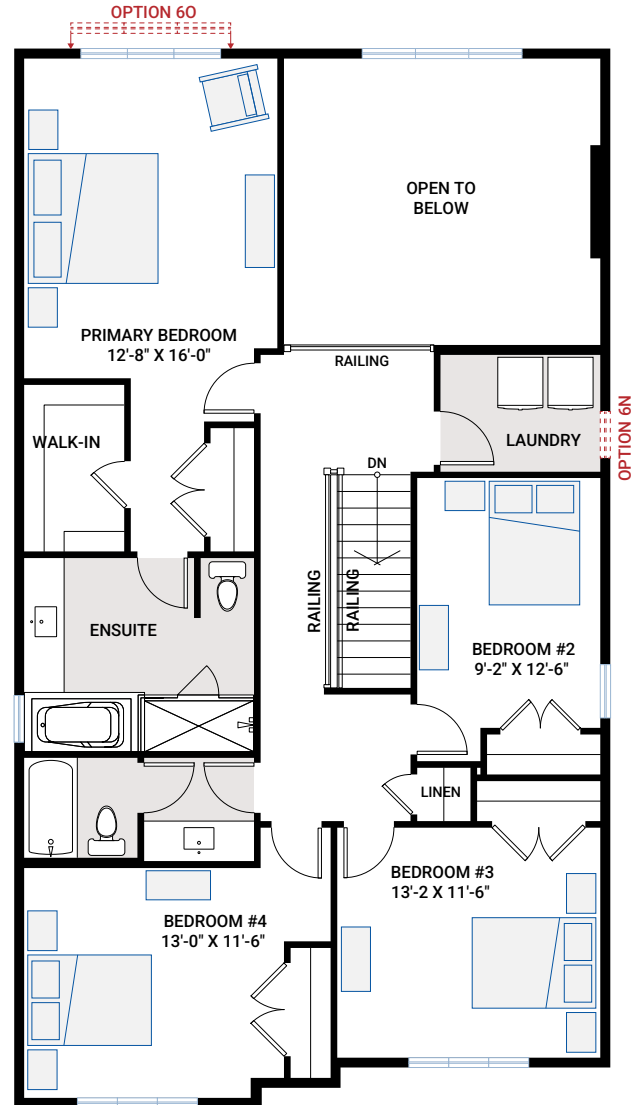
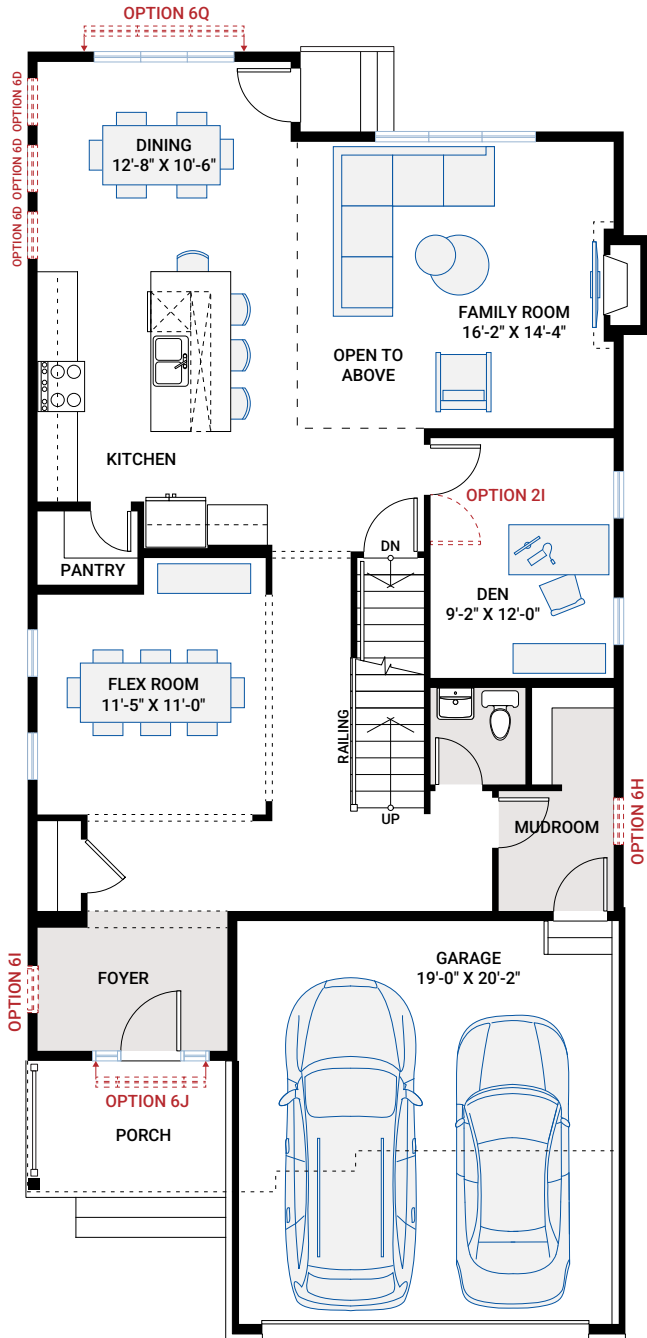
MODERN A3

MAIN FLOOR

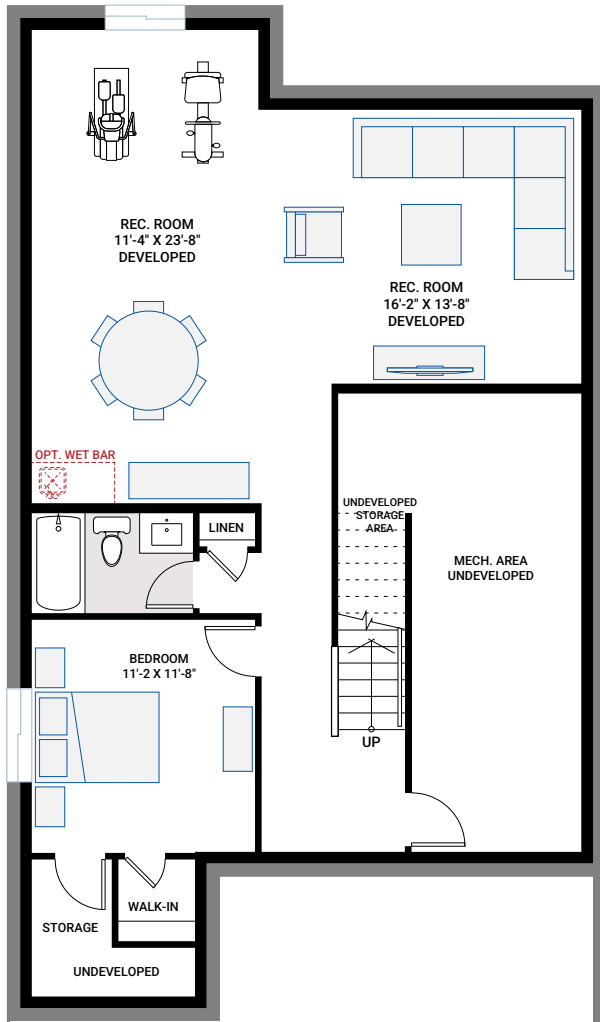
1,331 SQ FT

UPPER FLOOR

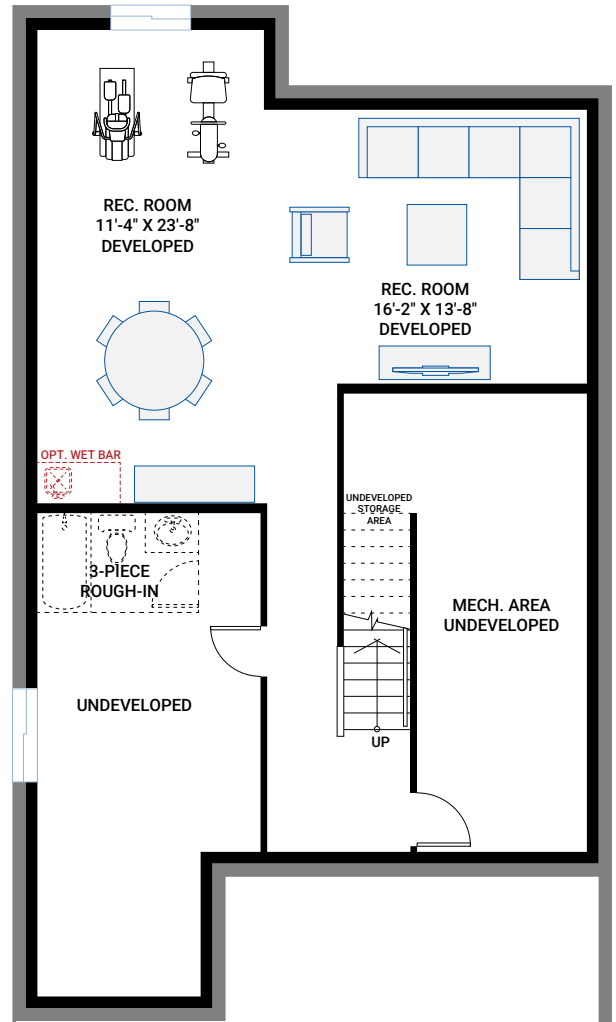
1,333 SQ FT



BASEMENT OPTIONS

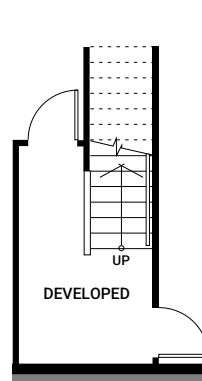


OPTION #1B
Developed Basement
 - additional 960 sq ft - Developed Basement
 - includes Option #1A - Developed Basement Stairs

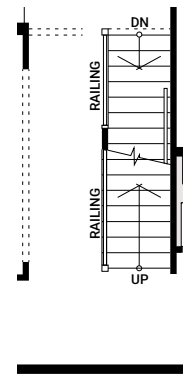


OPTION #1C
Developed Basement Rec Room
 - additional 717 sq ft - Developed Basement
 - includes Option #1A - Developed Basement Stairs

OPTION #4A
**9'-0\"/>
 - add 2 risers to the bottom of basement stairs**



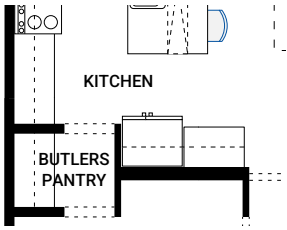
Partial Basement Plan



Partial Main Floor Plan

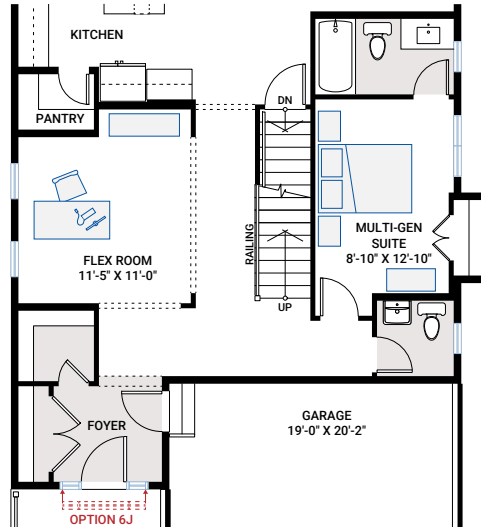
OPTION #1A
Developed Basement Stairs
 - additional 81 sq ft - basement landing

FLOORPLAN OPTIONS

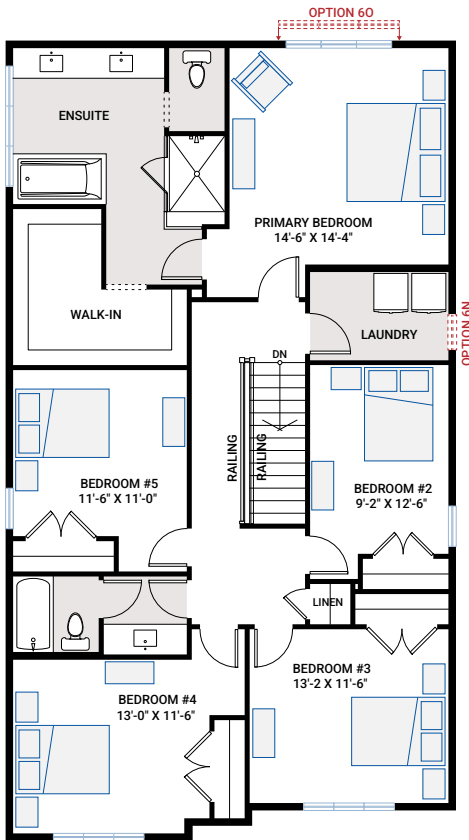


OPTION #2A
Alternate Kitchen Pantry

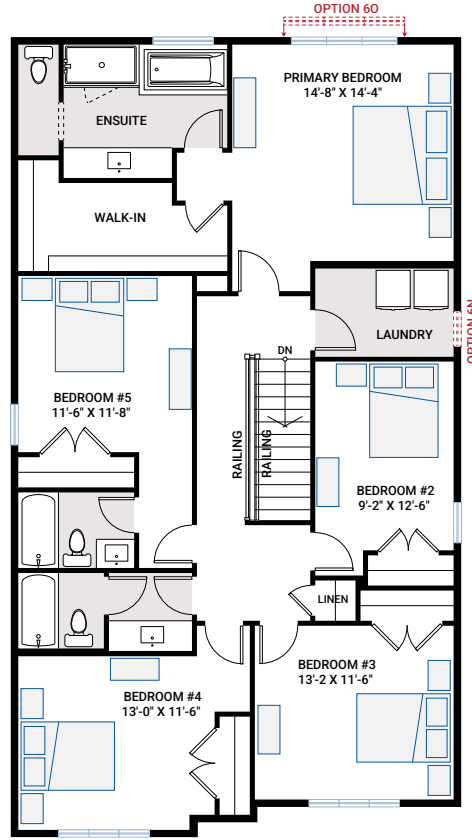
OPTION #4B
9'-0" Upper Floor Ceiling
- all Upper Floor windows to be increased in height
- subject to maximum bylaw height restrictions



OPTION #2D
Multi-Gen Suite
- additional 12 sq ft
- not available with:
- Option #3E - Alternate Upper Floor
- Option #3F - Alternate Upper Floor
- bedroom closet cantilevered into side yard



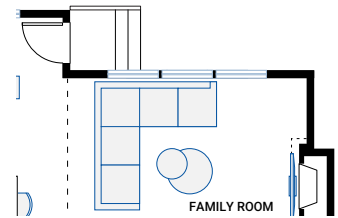
OPTION #3E
Alternate Upper Floor
- not available with:
- Option #2D - Multi-Gen Suite
- Option #6G - Family Room Window Wall
- additional 227 sq ft
- floor space added over Family Room
- Family Room windows revised
- fireplace revised to single storey detail



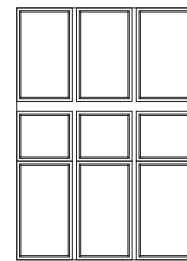
OPTION #3F
Alternate Upper Floor
- not available with:
- Option #2D - Multi-Gen Suite
- Option #6G - Family Room Window Wall
- additional 227 sq ft
- floor space added over Family Room
- Family Room windows revised
- fireplace revised to single storey detail



Partial Upper Floor Plan



Partial Main Floor Plan



OPTION #6G
Family Room Window Wall
- delete standard window configuration and replace with Window Wall as shown
- not available with Option #3E or #3F - Alternate Upper Floor