

---

# THE ROWAN

---



CANADIANA A1



FARMHOUSE A2



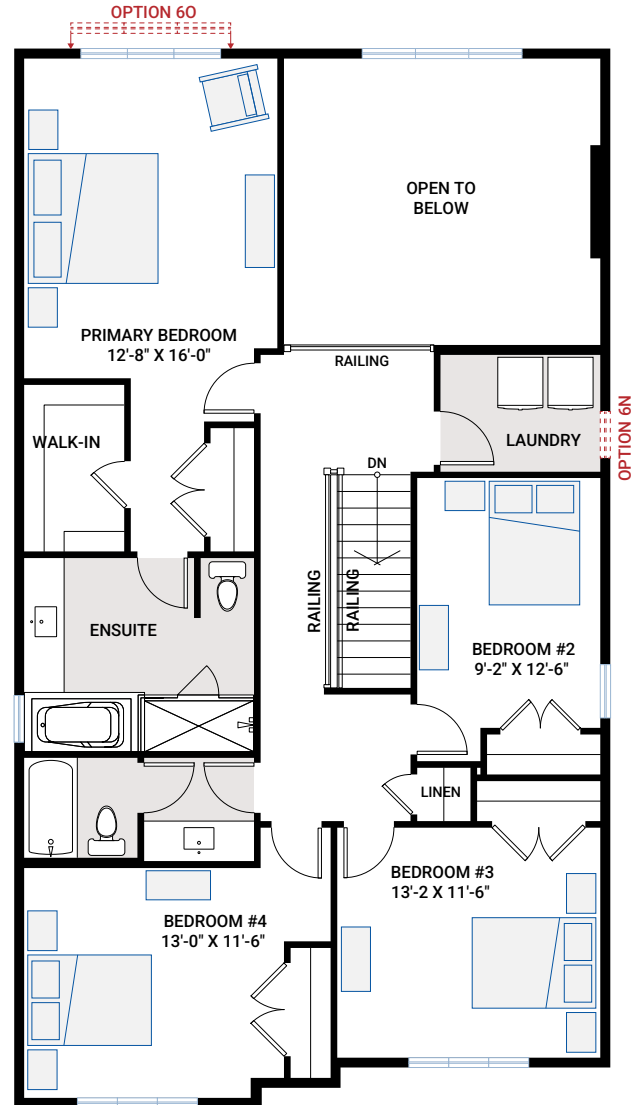
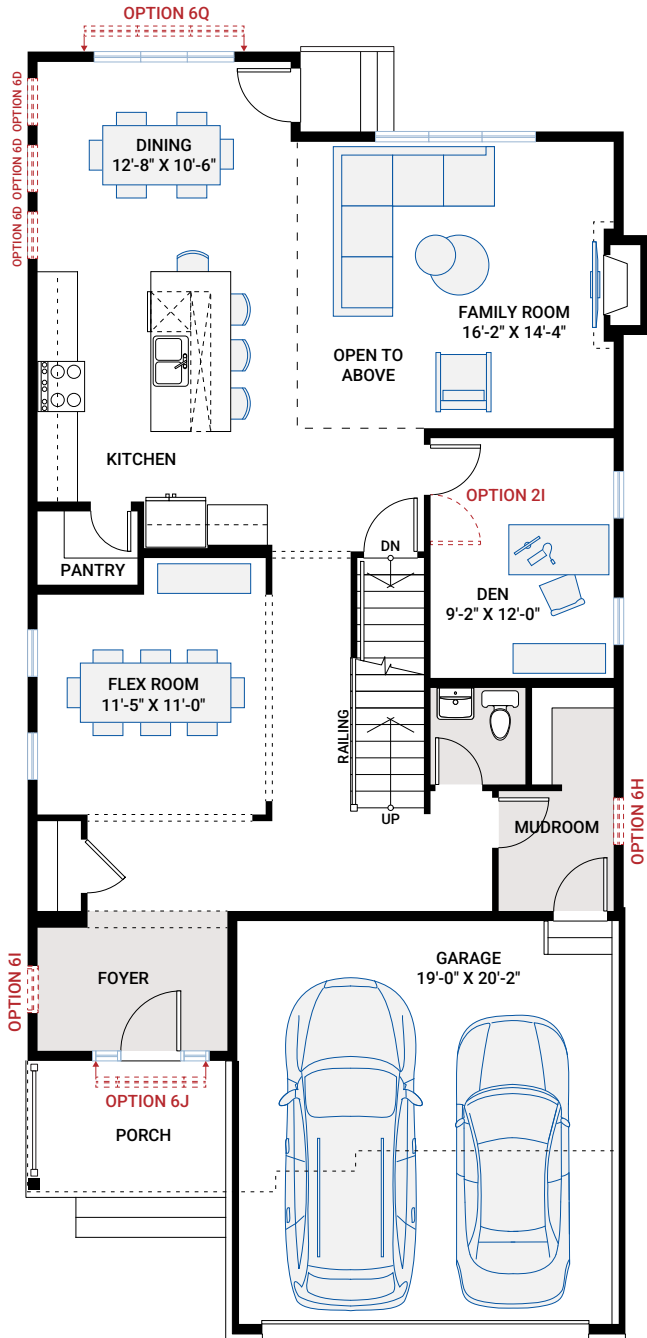
MODERN A3

# MAIN FLOOR

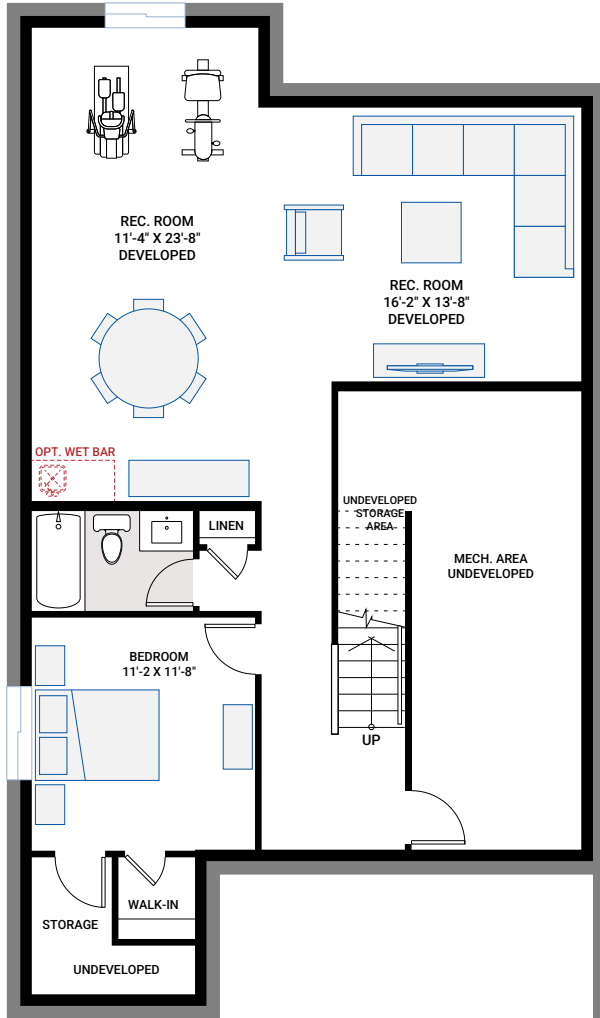
1,331 SQ FT

# UPPER FLOOR

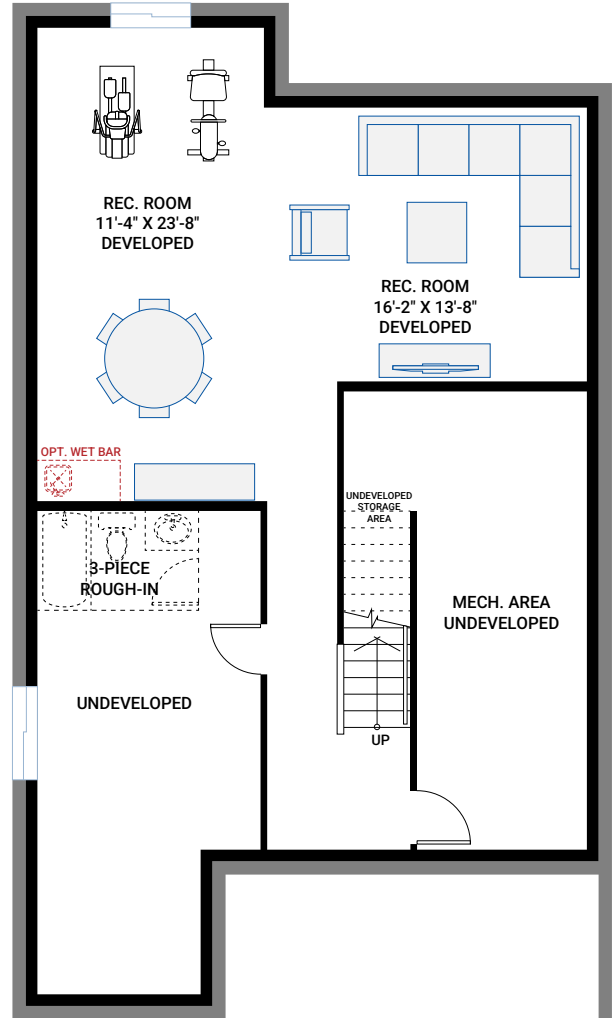
1,333 SQ FT



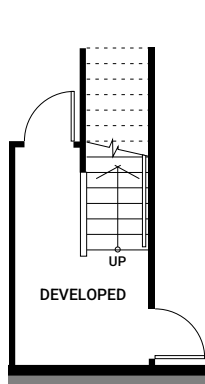
# BASEMENT OPTIONS



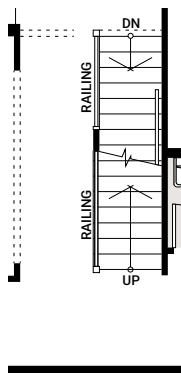
**OPTION #1B**  
**Developed Basement**  
 - additional 960 sq ft - Developed Basement  
 - includes Option #1A - Developed Basement Stairs



**OPTION #1C**  
**Developed Basement Rec Room**  
 - additional 717 sq ft - Developed Basement  
 - includes Option #1A - Developed Basement Stairs

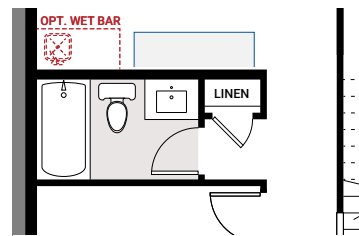


Partial Basement Plan



Partial Main Floor Plan

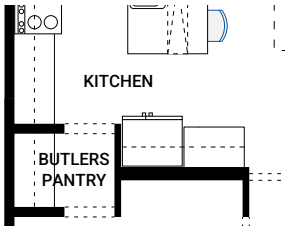
**OPTION #1A**  
**Developed Basement Stairs**  
 - additional 81 sq ft - basement landing



**OPTION #1F**  
**Developed Basement Bathroom**  
 - only available with Option #1C  
 - adds 66 sq ft to Developed Basement

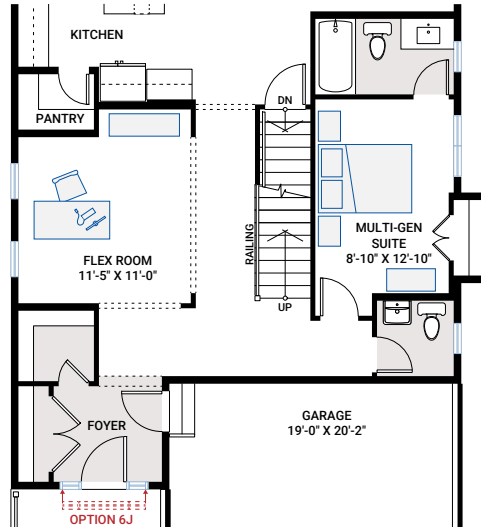
**OPTION #4A**  
**9'-0\"/>
 - add 2 risers to the bottom of basement stairs**

# FLOORPLAN OPTIONS

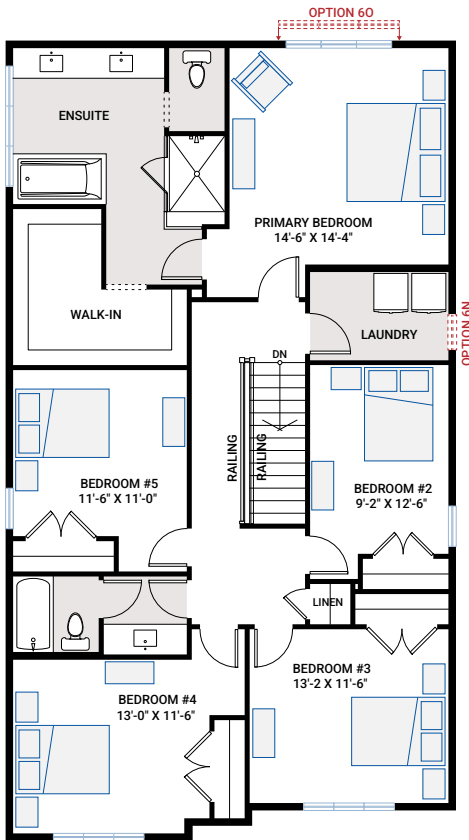


**OPTION #2A**  
Alternate Kitchen Pantry

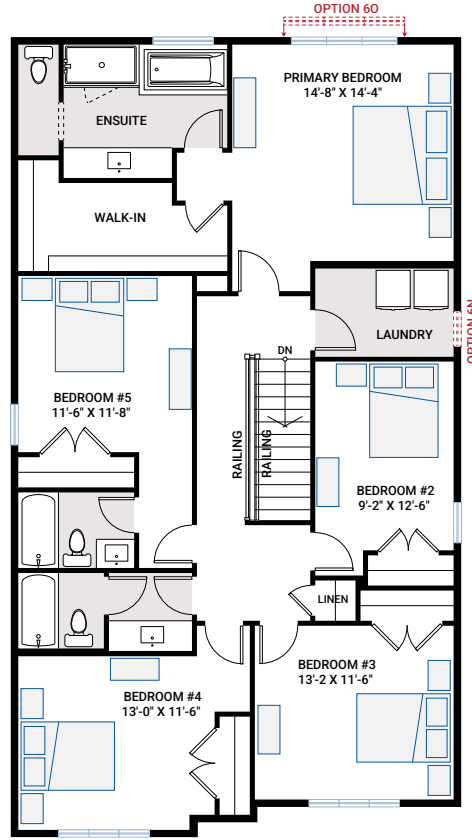
**OPTION #4B**  
9'-0" Upper Floor Ceiling  
- all Upper Floor windows to be increased in height  
- subject to maximum bylaw height restrictions



**OPTION #2D**  
**Multi-Gen Suite**  
- additional 12 sq ft  
- not available with:  
- Option #3E - Alternate Upper Floor  
- Option #3F - Alternate Upper Floor  
- bedroom closet cantilevered into side yard



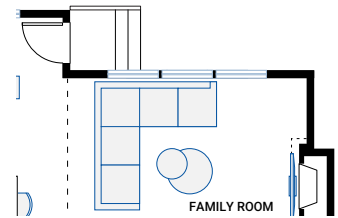
**OPTION #3E**  
**Alternate Upper Floor**  
- not available with:  
- Option #2D - Multi-Gen Suite  
- Option #6G - Family Room Window Wall  
- additional 227 sq ft  
- floor space added over Family Room  
- Family Room windows revised  
- fireplace revised to single storey detail



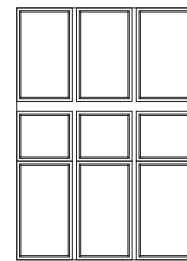
**OPTION #3F**  
**Alternate Upper Floor**  
- not available with:  
- Option #2D - Multi-Gen Suite  
- Option #6G - Family Room Window Wall  
- additional 227 sq ft  
- floor space added over Family Room  
- Family Room windows revised  
- fireplace revised to single storey detail



Partial Upper Floor Plan



Partial Main Floor Plan



**OPTION #6G**  
**Family Room Window Wall**  
- delete standard window configuration and replace with Window Wall as shown  
- not available with Option #3E or #3F - Alternate Upper Floor