
🕒 QUICK MOVE-IN



ELEVATION A2

THE **AIDEN**

1199 BRONZE AVENUE (LOT 88)

FARMHOUSE
BUNGALOW

COVERED
REAR DECK

SOUTH FACING
BACKYARD

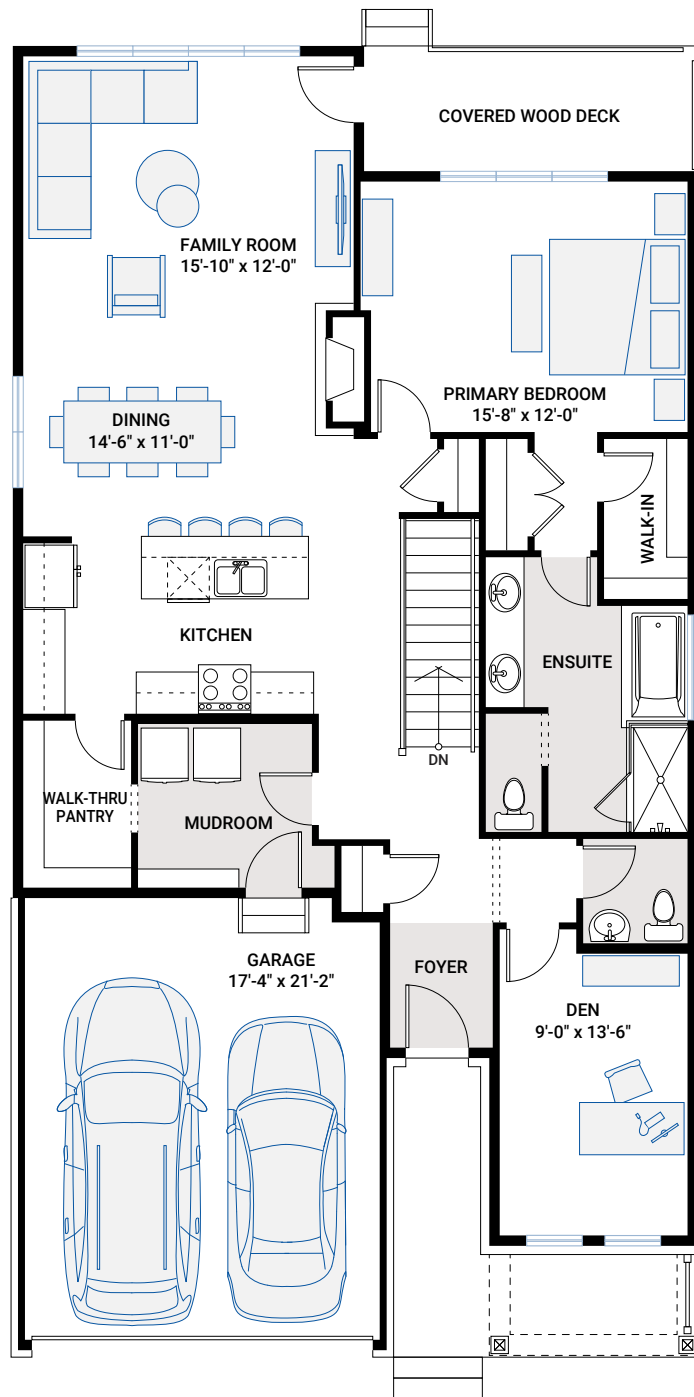


1,485 SQ FT | 2 BED | 1.5 BATH

CARDEL
HOMES

MAIN FLOOR

1,485 SQ FT

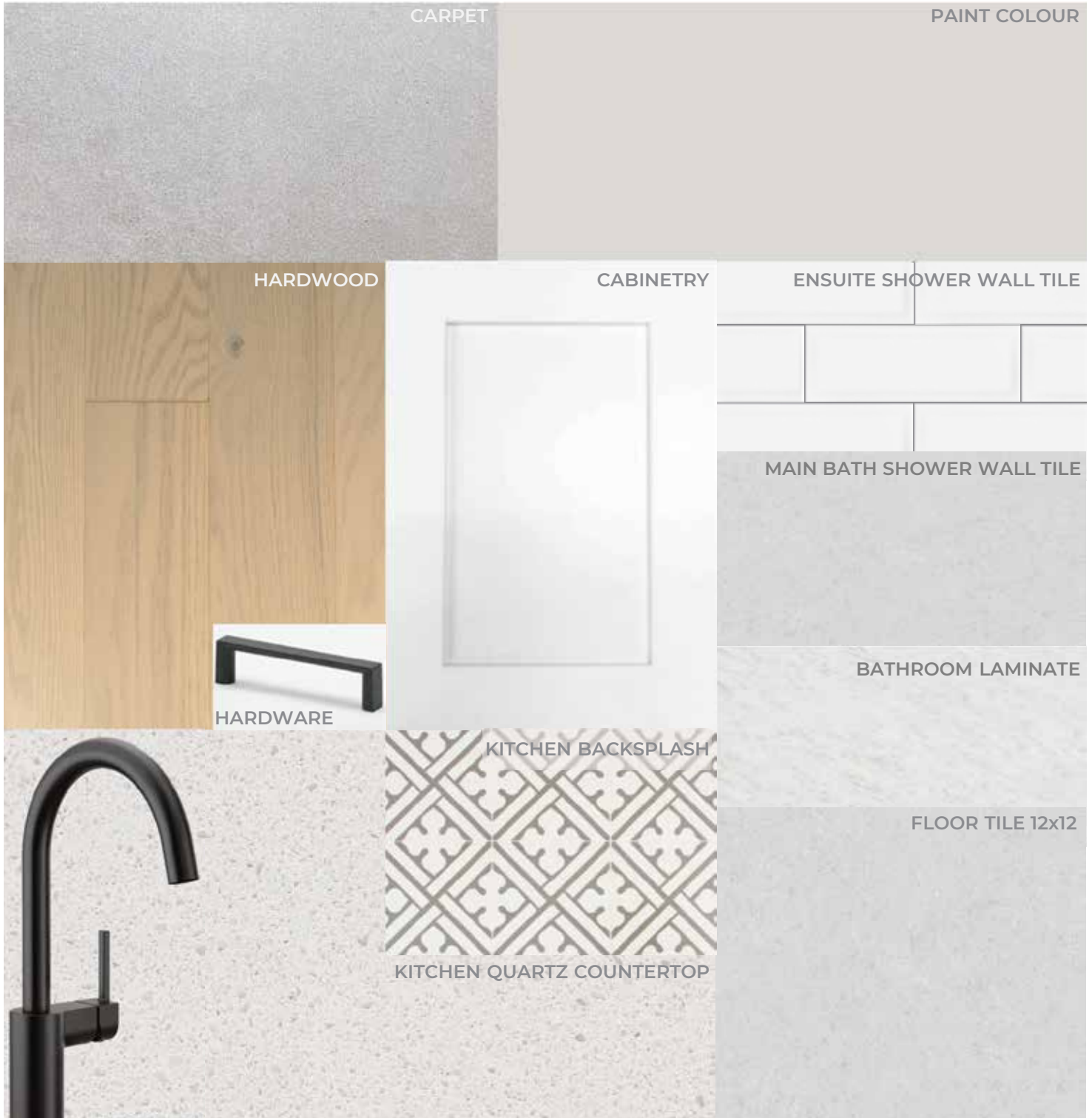


FOR MORE INFORMATION CONTACT: **THANG NGUYEN**, New Home Consultant
thang.nguyen@cardelhomes.com | P: 343.573.2464

FEATURES

- Farmhouse elevation with front covered porch, Hardie board, brick and siding
- Open concept kitchen, dining and family room
- L-shaped kitchen with walk-thru pantry to mudroom
- Convenient main floor den, laundry and powder room
- Premium HanStone countertops, black Moen faucet and stylish patterned stacked tile backsplash
- Custom cabinetry package including;
- Upgraded white shaker doors throughout
- Extended upper cabinet
- Soft close, black hardware
- Pots and pans drawers and chimney-style hood fan
- Raised vanity height in ensuite
- Large primary suite with tiled shower, double sinks and soaker tub
- Family room features a side fireplace with upgraded surround
- Upgraded 4 3/8" hardwood flooring throughout main level
- Triple glazed windows throughout
- Covered rear deck
- South facing backyard

INTERIOR COLOUR SCHEME – 5B



* All sizes are nominal. The colours represented on this page may vary from the actual product colours. Actual samples can be viewed by appointment.