
🕒 QUICK MOVE-IN



ELEVATION A3

THE DILLON

1164 BRONZE AVENUE (LOT 87)

**CUSTOM KITCHEN
CABINETS**

**QUARTZ
COUNTERTOPS
THROUGHOUT**

**DEVELOPED
BASEMENT
REC ROOM**

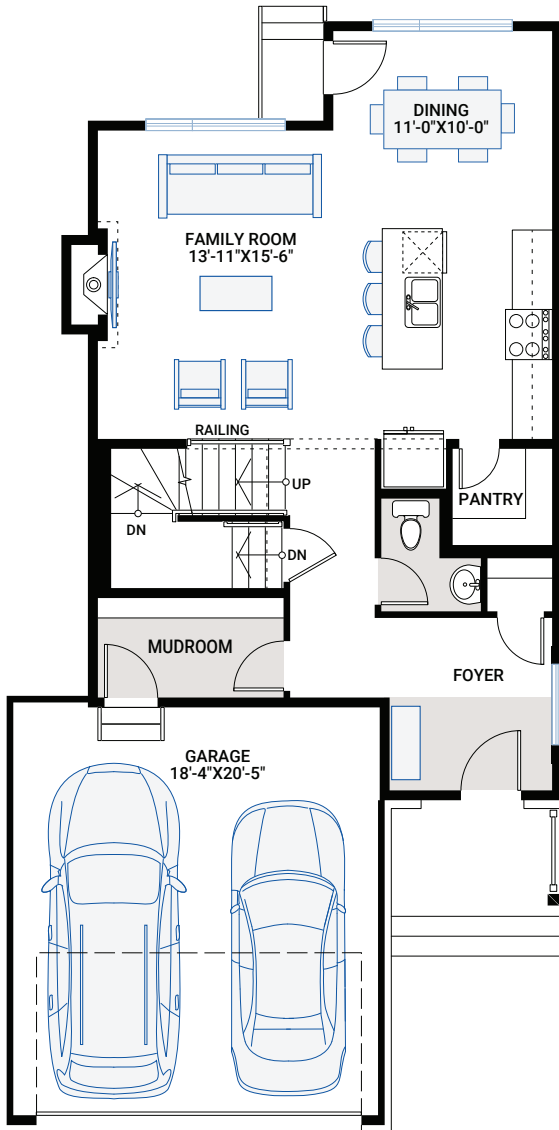


2,283 SQ FT | 3 BED + LOFT | 2.5 BATH

**CARDEL
HOMES**

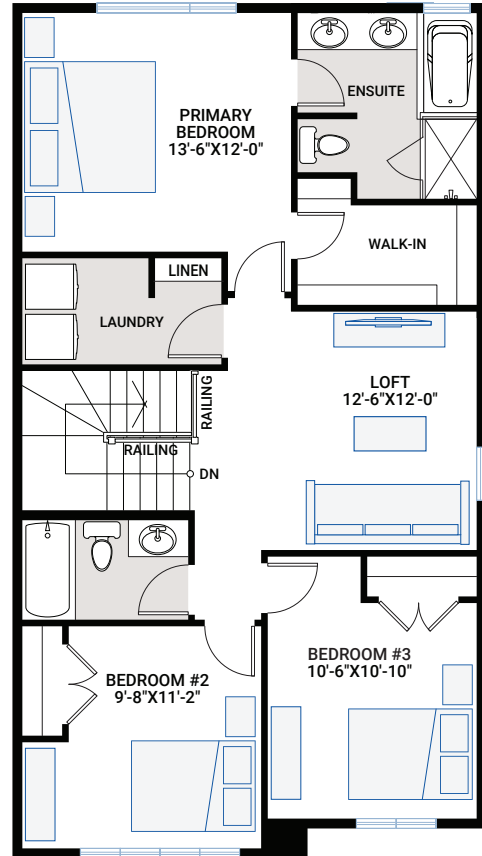
MAIN FLOOR

826 SQ FT



UPPER FLOOR

1,022 SQ FT



FOR MORE INFORMATION CONTACT: THANG NGUYEN, New Home Consultant
thang.nguyen@cardelhomes.com | P: 343.573.2464

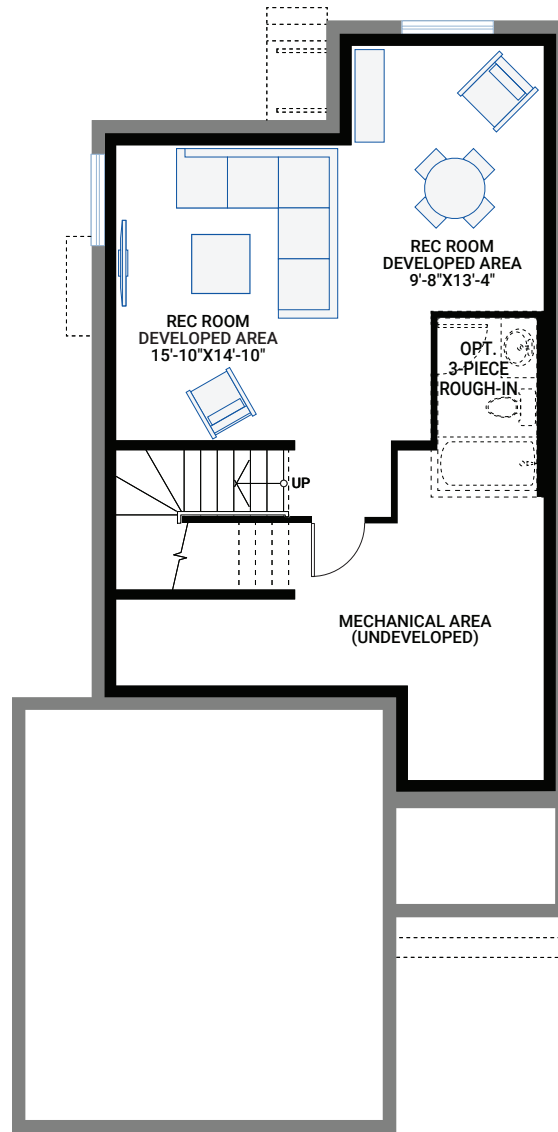


2,283 SQ FT | 3 BED + LOFT | 2.5 BATH



DEVELOPED BASEMENT

435 SQ FT



- Open-concept floorplan with large kitchen and walk-in pantry
- Double-car garage with large mudroom
- Family room with gas fireplace and oversized windows boasting lots of natural light
- Developed basement rec room
- Large primary bedroom with walk-in closet
- Alternate ensuite with separate shower/bath and double vanities with quartz countertops
- 3 bedroom + loft on the second floor
- Interior selections are designer chosen and flow beautifully through the home
- Matte black metal spindles
- Quartz kitchen countertops
- Custom kitchen package including; Upgraded two-tone cabinets with white uppers and birch island
- Upgraded white shaker doors throughout
- Extended upper cabinet
- Soft-close, black hardware throughout
- Pots and pans drawers and chimney-style hood fan
- Main bathroom with quartz countertops
- Upgraded hardwood floors throughout the main floor
- 3-piece rough-in for future basement bathroom

INTERIOR COLOUR SCHEME – 3



* All sizes are nominal. The colours represented on this page may vary from the actual product colours. Actual samples can be viewed by appointment.